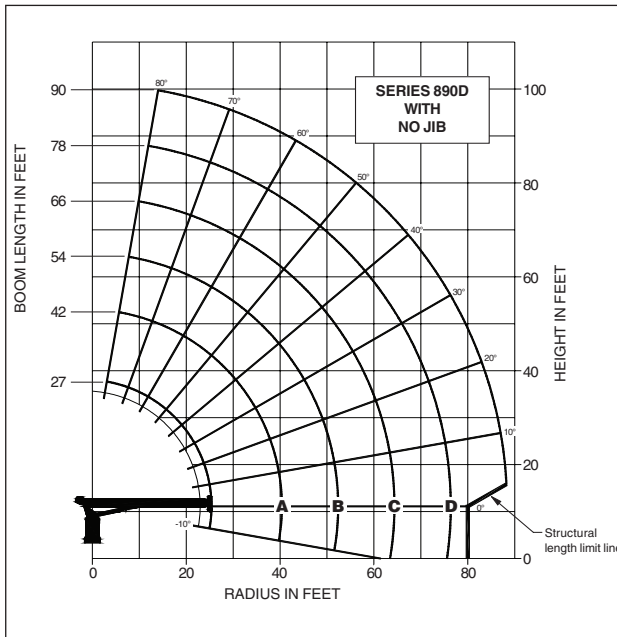


capacities

12

Load Rating Chart: Series 890D (27.43 m) Boom with No Jib



CAUTION:

- Do not operate crane booms, jib extensions, any accessories or loads within 10 ft (3m) of live power lines or other conductors of electricity.
- Jib and boom capacities shown are maximum for each section.
- Do not exceed capacities at reduced radii
- Load ratings shown on the load rating charts are maximum allowable loads with the outriggers properly extended on a firm, level surface and the crane leveled and mounted on a factory recommended truck.
- Always level the crane with the level indicator located on the crane.
- The operator must reduce load to allow for factors such as wind, ground conditions, operating speeds and their effects on freely suspended loads.
- Overloading this crane may cause structural collapse or instability.
- Weights on any accessories attached to the boom or loadline must be deducted from the load chart capacities.
- Do not exceed jib capabilities at any reduced boom lengths.
- Do not deadhead lineblock against boom tip when extending boom or winching up.
- Keep at least three wraps of loadline on drum at all times.
- Use only specified cable with this machine.

**SERIES 890D
(27.43 M) BOOM /
NO JIB**

LOADLINE EQUIPMENT DEDUCT (lb)

Downhaul weight	_____	150 lb (68 kg)
One sheave block	_____	305 lb (138 kg)
Two sheave block	_____	355 lb (161 kg)
Three sheave block	_____	575 lb (261 kg)

Load Rating Chart: Series 890D (27.43 m) Boom with No Jib

LOAD RADIUS (FEET)	LOADED BOOM ANGLE	27 ft BOOM (lb)	LOADED BOOM ANGLE	A 42 ft BOOM (lb)	LOADED BOOM ANGLE	B 54 ft BOOM (lb)	LOADED BOOM ANGLE	C 66 ft BOOM (lb)	LOADED BOOM ANGLE	D 78 ft BOOM (lb)	LOADED BOOM ANGLE	90 ft BOOM (lb)
5	77	46,000										
8	70	33,000										
10	65	27,400	75.5	23,900	79	22,300						
12	60	23,500	72.5	20,900	77	19,100						
14	54.5	20,700	69.5	18,300	75	16,800	78	15,400				
16	49	18,300	66.5	16,300	72.5	14,800	76	13,600	79	12,600		
20	35	14,500	60	13,200	68	12,200	72.5	11,250	76	10,300	78	10,000
25			51.5	10,700	62	9,900	68	9,150	72	8,450	74.5	8,100
30			42	8,800	55.5	8,350	63.5	7,450	68	6,800	71.5	6,500
35			31	7,050	49	6,900	58	6,400	64	5,850	68	5,550
40					41	5,850	53	5,500	60	5,250	64.5	4,750
45					32	4,900	47	4,750	55	4,400	61	4,150
50					18.5	3,700	40.5	4,050	50.5	3,850	57	3,600
55							32.5	3,350	45.5	3,300	53	3,150
60							22.5	2,700	39.5	2,900	49	2,750
65									33	2,450	44	2,400
70									25	1,950	39	2,050
75									12	1,150	33.5	1,700
80											26.5	1,350
85											17	850
	0	7,400	0	3,500	0	2,000	0	950				

Shaded areas are structurally limited capacities.

THIS CHART IS ONLY A GUIDE AND SHOULD NOT BE USED TO OPERATE THE CRANE. The individual crane's load chart, operating instructions and other instructional plates must be read and understood prior to operating the crane.

800D

Radio Remote Controls –

Eliminate the handling and maintenance concerns that accompany cabled remotes. Operate to a range of about 250 feet (76 m), varying with conditions.

• **NB4R**

One-Person Basket –

Strong but lightweight steel basket with 300 lb (139 kg) capacity, gravity hung with swing lock and full body harness.

• **B1-S**
• **2B1-S** (for dual locking baskets)

Heavy-duty Personnel Basket –

1,200 lb. (544 kg) capacity steel basket with safety loops for four passengers. Gravity leveling 72 x 42 in (183 x 107 cm) platform. Fast attachment and secure locking systems. Load chart must show 2,300 lb (1043 kg) minimum to operate this accessory.

• **BSA-1**
• **BSA-R1** (provides rotation)

Hydraulic Oil Cooler –

Automatic, self-contained radiator system with electric fans cools oil under continuous operation.

• **OC**

Continuous Rotation –

Allows rotation of turret/boom without rotation stop.

• **CR**

Single Front Outrigger –

Center mount front stabilizer with 25 in vertical stroke.

• **SFO**

Hour Meter –

Hour meter in truck cab to record crane operation hours.

• **HRM**

Bulkhead Options –

Steel 30 in solid wall bulkhead.

• **BHSI**
• **BHSD**

Steel Tool Box Options –

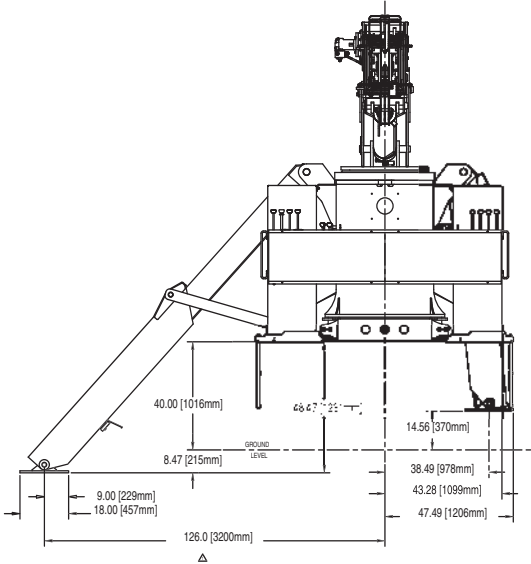
Spanish-Language Danger Decals, Control Knobs, and Operators' Manuals –

• **SDD**
• **SOM**

dimensions specifications

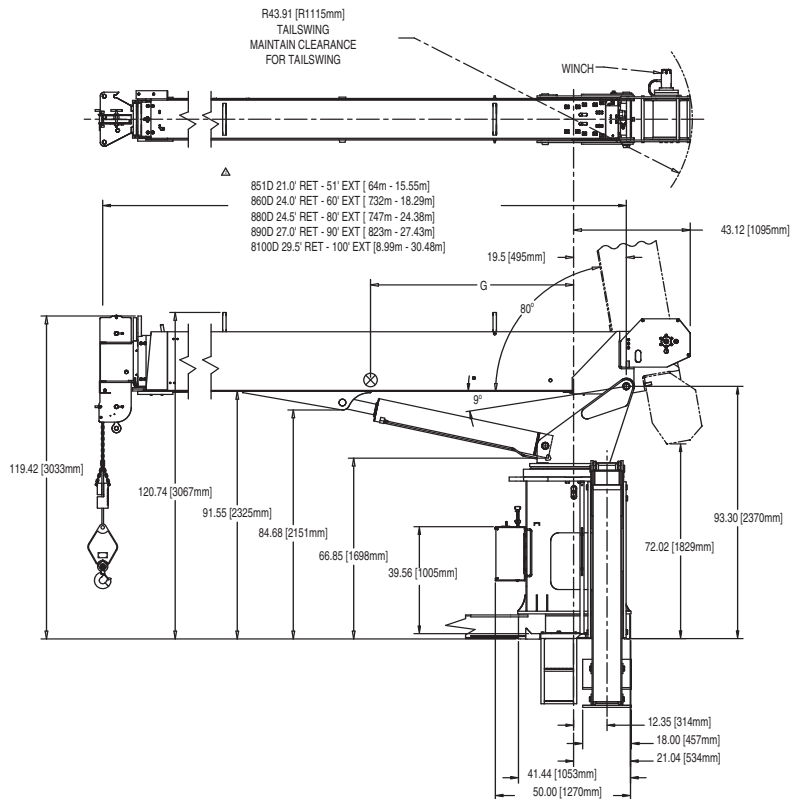
Dimensions Specifications

14



SERIES	G in (mm)	DRY WEIGHT lb (kg)	WITH OIL/WT lb (kg)
851D	28 (686)	13700 (6214)*	14215 (6448)*
860D	46 (117 cm)	14270 (6214)*	14790 (6448)*
880D	56 (1422)	18475 (8380)*	18995 (8615)*
890D	68 (1730)	19640 (8908)**	20160(9144)**
8100D	79 (2010)	20635 (9360)***	211585 (9596)***

***INCLUDES STANDARD 18' SUBBASE
 **INCLUDES STANDARD 20' SUBBASE
 ***INCLUDES STANDARD 22' SUBBASE



800D