



**Amish Handcrafted
Maintenance Free
Poly Outdoor Furniture**

Product Catalog

The Benefits of Poly Furniture

- Made from 100% recycled plastic
- Poly lumber has a UV ray protector to minimize fading
- Maintenance free
- Will not mildew, crack, warp, or rot
- Will withstand the harshest environments
- Termite resistant

WARRANTY

20 years residential use • 5 years commercial use

Features

- Hidden screws where possible
- All stainless steel hardware
- Aluminum bracing where needed
- Powder coated steel swivel (50 Ball Bearing)

Each piece of furniture is individually handcrafted by skilled artisans who utilize building methods handed down through the generations. We use only first-rate materials & responsible building practices. We are always adding to our line of products & customize to your specs for an additional price percentage.

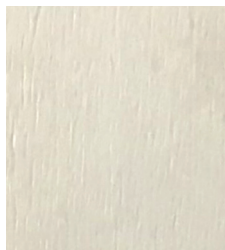
Place yourself outdoors with our line of furniture and view the amazing possibilities with the integration of style & design. Consider adding a brightly colored pair to your outdoor decor for a fun splash of color!

Products are Available in 16 Different Colors

For 2-Tone Furniture

Any Color Combination is Available

1st color is the base & frame • 2nd color is the seat & back



WHITE



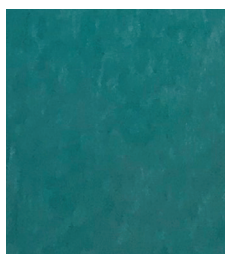
YELLOW



TANGERINE



LIME GREEN



ARUBA



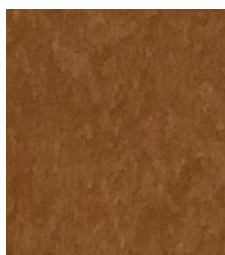
RED



PATRIOT



BLUE



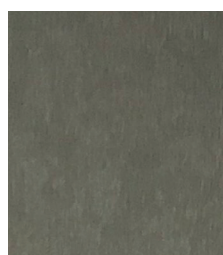
CEDAR



CHERRY



BLACK



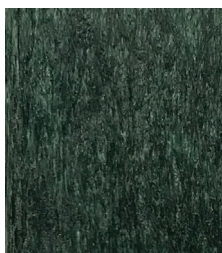
SLATE



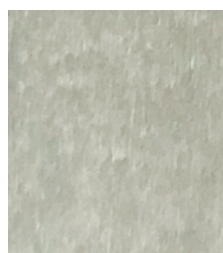
BROWN



**WEATHERED
WOOD**



**WOODLAND
GREEN**



LIGHT GRAY

Multi-Color Samples

Our NEW Multi-Color Options have become an instant best seller. At this point we only have certain profiles available.

We can only use multi-colors as in two tone combinations with the 2nd color always being the multi-color.

Put your own combination together for a “Like No Other Look”



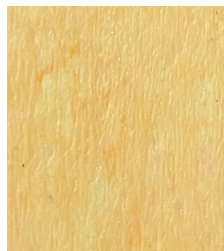
OPEN SEA



BLUEBERRY



IT'S A BOY



DREAMSICKLE



STONE



MARBLE



GRABE



**SPECKLED
MAPLE**



BARN BOARD



WALNUT

POLY WOOD

PolyTuf HDPE plastic lumber is custom-extruded from purified blends of recycled plastics - the kind that come from milk and detergent bottles. Additional proprietary additives are compounded into each product to meet the specifications of each of our customers for their unique applications. UV - inhibited pigments, anti-oxidant processing aids, foaming agents and other compounds are introduced depending on the end use and each customer's performance requirements.

FEATURES

- Manufactured to exacting specifications with tolerances to meet the toughest applications.
- Material is easily machined with any tools appropriate for working with real wood.
- Essentially maintenance free, with exceptional resistance to moisture, fading, insects, splinting, warping and other hazards of environmental exposure common to wood or wood fiber composite products.
- Requires no waterproofing, staining or other similar recurring maintenance other than an occasional washing with soap and water.
- High color stability UV pigment systems which minimize material breakdown from prolonged sun and weather exposure.
- Unlike most wood and wood composite products that quickly fade when exposed to the weather, PolyTuf™ has no wood fibers, retains its vibrant look for years and may fade only slightly over its entire service life.
- PolyTuf 1™ plastic lumber is well suited for exterior applications where resistance to weathering and minimal maintenance is required, and a quality appearance is essential. PolyTuf maintains its color stability and surface finish over its entire useful service life, and never needs to be sealed, painted or stained.

ENVIRONMENT

Customers concerned about the environment can feel confident that they have made a good decision for the environment by using poly products.

Our plastic lumber products are manufactured with a blend of virgin and/or recycled HDPE plastics - the kinds found in milk bottles. In fact, we recycle over 115 million plastic bottles a year - keeping tons and tons of plastics out of landfills every year.

Unlike other types of plastic, HDPE is the most environmentally stable — giving off no harmful fumes into the environment. The Healthy Building Network recommends HDPE resin - based products as the most environmentally friendly plastic building materials.

Our products are designed to hold up to all kinds of adverse weather conditions for decades. And when they are finally ready to be replaced, the materials can be recycled again into new useful products.

Fan Back Swivel Glider Set FB100
w/Rounded End Table w/Cup Holders RETCH

Pictured in brown/weathered wood



FB100
Classic Swivel Glider

*Pictured in
woodland green/weathered wood*



FB102
Classic Glider
w/Cup Holder

Pictured in slate/light gray

Classic Glider w/Gliding Ottoman & 22" Deluxe End Table

Pictured in white/cedar

FB102



**DET22
Deluxe
End
Table**

*Pictured in
brown/
weathered wood*



**RETCH
Rounded
Edge End
Table w/
Built-In Cup
Holders**

*Pictured in
woodland green/cedar*

*Also available
without cup holders.*

GO20 Gliding Ottoman

*Pictured in
woodland green/weathered wood
Also available stationary.
See STO stationary Ottoman
for price*



**FB108
Stationary
Adirondack
Chair**

*Pictured in
woodland green/
weathered wood*

GET PATRIOTIC!



Green Bay

Cardinal

Hawkeye



AFC104

Classic Folding Adirondack Shown w/FET Folding End Table

*Pictured in
tangerine/white*



FET20

Folding End Table



AFC

Classic Folding Adirondack

5' Fan Back Glider w/Flip Down Cup Holders

Pictured in slate/marble

FBG5



5' Fan Back Stationary Bench w/Flip Down Cup Holders

Pictured in black/marble

FBS5



48" Fan Back Love Seat Glider

Pictured in brown/weathered wood

FB48



Cup holder available on all items except swings.

Cup Holder

48" Fan Back Stationary

Pictured in black/light gray

48S





FBS5
**5' Fan
 Back
 Swing
 w/Flip
 Down
 Cup
 Holders**

*Pictured in
 woodland green/
 marble*

FBS48
48"
**Love
 Swing**
 Powder
 Coated
 A Frame
 Stand
 Fits 4'x5'
 Swings
*Pictured in
 brown/
 weathered wood*



FB100

**Swivel
Fan
Back
Glider
w/Cup
Holder &
Gliding
Ottoman**

*Pictured in red,
white & blue*



PB116

**22" Plain Back
Swivel Glider**

Pictured in black/cherry



**Plain Back Swivel Glider Set
w/Rounded End Table & Cup Holders**

Pictured in brown/cedar

PB116



Plain Back Single Glider

PB114

*Pictured in
slate/aruba*



22" Plain Back Stationary Chair

PBS120

*Pictured
in
patriot
blue/
white*



Plain Back Glider Set w/DET22 Square End Table & G.O. Gliding Ottomans

Pictured in weathered wood/speckled maple

PB114



PB118
**5' Plain Back
Glider w/Flip
Down Cup
Holders**

Pictured in black/cedar



PB110
**5' Plain Back
Glider**

Pictured in black/cedar

*Also available in
swing style.*

*See PBS5
5' Plain Back Swing
for pricing*



PB112
**4' Plain
Back
Glider**

*Pictured in cherry/light
gray*





PBS5
**5' Plain
Back Swing
w/Flip
Down Cup
Holders**

*Pictured in black/
barn board*



PBS48
**4' Plain
Back
Swing w/
A Frame
Stand**

*Pictured in
black/brown*

Curved Park Bench 60" Long

Pictured in slate/aruba



Tete-A-Tete For Two *Pictured in solid aruba*

Center Table Slides Out!



*Available in Bar,
Counter & Dining*

Tete-A-Tete For Two

Pictured in slate/blueberry



Tete-A-Tete For Two w/Cupholders

Pictured in black/stone



Size: 8' Tall & 50" Wide
**Gigantic Chair
 w/Steps**

Pictured in black/red
 Draw customers for
 photos or advertise w/
 engraved logo!



FBPB
**20" Fan Back Bar
 Height Swivel
 Patio Chair**
Pictured in brown/speckled maple

FBPC
**20" Counter Swivel
 Fan Back Patio
 Counter Chair**

Pictured in black/walnut



FBPD
**20" Fan Back
 Patio Dining
 Swivel Chair**

Pictured in black/yellow



FBP-SG
**22" Swivel Glider
 Fan Back Counter
 Patio Chair**
Pictured in black/light gray

FBPCH
**20" Bar Patio Chair
 w/Cup Holder**

Pictured in black/slate



All Patio Chairs Available in 20" & 22" widths for the same price.

**All patio chair bases now
w/rounded foot rests!
No more shin kicking!**



NEW!



PBPB

20" Plain Back Bar Patio Chair

Pictured in black/white



Stationary Saddle Chairs

*Available in Bar,
Counter & Dining
Heights. Pictured in
brown/speckled maple*

Swivel Saddle Chairs

*Available in Bar,
Counter & Dining
Heights.*

Pictured in black/slate



PBPC

22" Plain Back Counter Patio Chair

Pictured in black/barn board



20" Fan Back Swivel Glider Dining Patio Chair

Pictured in black/walnut

FBSG-DP



PBPD

20" Plain Back Dining Patio Chair

Pictured in patriot/it's a boy

**All Patio Chairs Available
in 20" & 22" widths for
the same price.**



PBPSG

20" Plain Back Swivel Glider Patio Chair

Pictured in slate/aruba

30" Round Counter Pedestal Table w/Two Plain Back Counter Patio Chairs

Pictured in black/aruba

RPT30



30" Square Pedestal Table (Bar) w/out Umbrella Hole w/Two 20" FB Swivel Patio Bar Chairs

Pictured in slate/light gray

SPT30



All tables available in 3 different heights: Bar 42", Counter 36" & Dining 30".

54" Round Patio Table w/Six 20" FB Patio Chairs

RT54C

*Pictured in light
gray/slate*



54" Round Table

*Pictured in
light gray/grabe*



RT54C

39"x42" Counter Patio Table w/20" Swivel Glider Plain Back Patio Chairs

ST42

Pictured in slate/aruba



STC42

39"x42" Square Patio Table

Shown in
Counter Height
Pictured in slate/light gray



**All tables available in 3 different heights:
Bar 42", Counter 36" & Dining 30".**

45"x48" Counter Patio Table w/Four 22" Fan Back Counter Swivel Glider Patio Chairs

ST48

Pictured in woodland green/open sea

ST48
45"x48"
Square
Patio Table
Shown in Counter
Height
Pictured in brown/cedar



Standard 7' Counter Table w/Six Plain Back Patio Chairs

Pictured in brown/barn board

STC7



39"W x 7'L
Standard Table

Pictured in brown/barn board

**All tables available in 3 different heights:
Bar 42", Counter 36" & Dining 30".**



ST7

39"x8' Standard Counter Table w/Eight 20" Counter Fan Back Chairs

*Pictured in
black/walnut*



39"x8' Standard Table

Shown in Counter Height.

Pictured in black/slate



39"x6' Dining Set w/FBPD 20" Dining Swivel Chair

ST6D



*Pictured in
patriot blue/
weathered
wood*

**All tables
available
in 3
different
heights:
Bar 42",
Counter
36" &
Dining 30".**

39"x6' Square Patio Table

Shown in Dining Height.

Pictured in patriot blue/weathered wood



39"x6' Standard Table w/FBPC 20" Swivel Counter Chair

Shown in Counter Height. *Pictured in brown/weathered wood*

ST6



39"x6' Square Standard 6' Table

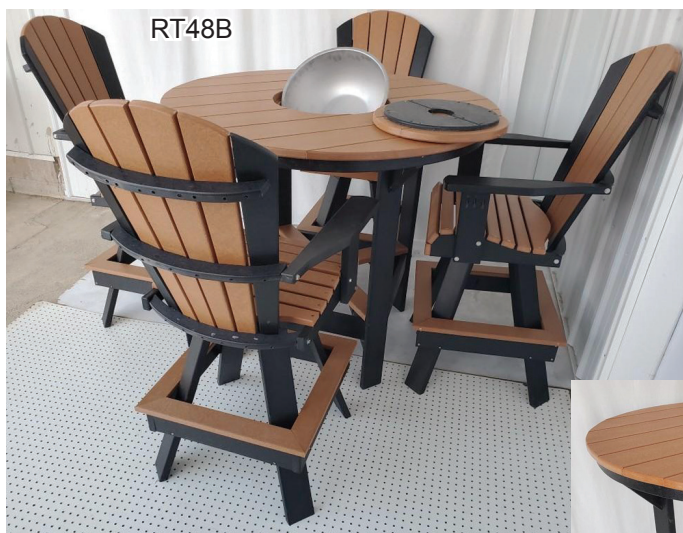
Shown in Bar Height *Pictured in slate/light gray*

ST6



All tables available in 3 different heights: Bar 42", Counter 36" & Dining 30".

48" Round Table w/Ice Bowl w/FBPB 20" Swivel Chairs



RT48B

Shown in Bar
Height.

Pictured in black/cedar

RT48B

48" Round Patio Table w/Ice Bowl

Shown in Bar Height

Pictured in black/cedar



42" Round Table w/Ice Bowl & Chairs w/FBPC 20" Swivel Counter Chairs

Shown in Counter Height. *Pictured in black/slate*



RT24B

**All tables
available in
3 different
heights:
Bar 42",
Counter
36" &
Dining 30".**

48" Standard Round Patio Table

Shown in Dining Height

Pictured in patriot blue/weathered wood



RT48D

RT42



**42"
Round
Standard
Table**

Both Shown in Counter Height
& Pictured in black/cherry

**42"
Round
Bar &
Counter
Table
w/Ice
Bowl**

RT42B



39"W x 8'L Bar Table w/Fire Pit in Center in Bar Height w/FBPB 20" Swivel Bar Chair

Includes: Tempered Fire Retaining Glass & Also Poly Insert When Fire Pit Not In Use.
STFP *Pictured in slate/light gray*



25"W x 44"L x 26" High Fire Pit Entertainment Center

Includes: Fire Retaining Flame Guard & Insert When Not In Use.



FPE



**Shown
w/Insert**

42" Square Fire Pit Table w/Swivel Glider Fan Back 22" Patio Chairs

Includes: Tempered Fire Retaining Glass & Also Poly Insert When Not In Use.



39"W x6'L Counter Table w/Fire Pit w/Counter Height Fan Back 22" Patio Chairs

Includes: Tempered Fire Retaining Glass & Also Poly Insert When Not In Use.

Also Available in 39"x7' (STFP7) Pictured in weathered wood/brown STFP6



All tables available in 3 different heights: Bar 42", Counter 36" & Dining 30".

**Poly
30
Gallon
Trash
Cans**



Pictured
At Left
With Lid
Up And
Top Off

FB15

**15" Flower Box
Planter**

Pictured in black/white



FB12

**12" Flower Box
Planter**

Pictured in brown/weathered wood



Various Poly Light House Options

Contact us
for prices.



PBBL
**Plain Back
Beach
Lounger**

Pictured in slate

FBBL
**Fan Back
Beach
Lounger**

*Pictured in black/
weathered wood*



ENGRAVING

Plain Back Swivel Glider Set w/Cup Holders w/22" Square End Table

PB116



Poly Shelves

16" Long x 6" Deep



CEDAR

ARUBA

OPEN SEA

BLUEBERRY

LIME

IT'S A BOY



Poly Waste Basket

Available Without Engraving
Top Lifts Off For Easy Bag In-Out

Pictured in black/red

ENGRAVING



Mail Box
Multiple Color
Options
With or Without
Engraved Name
& Address



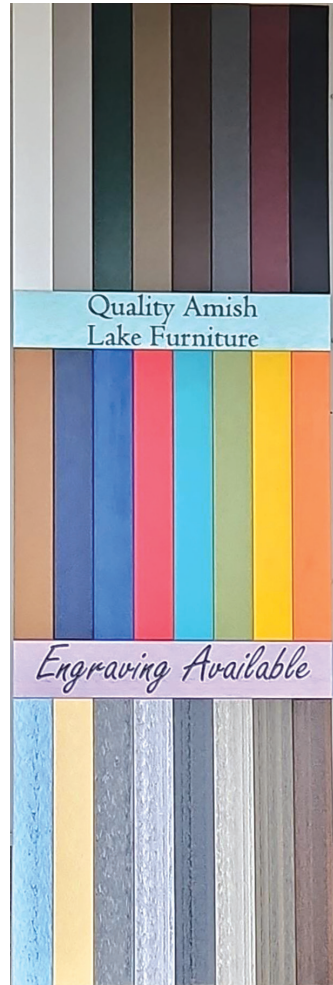
48" Fan Back Love Seat Glider

48F

Pictured in slate



Dealer's Color Sample Demo



Size: 8' Tall
& 50" Wide

Gigantic Chair w/ Steps

Pictured in black/red

Draw customers
for photos or
advertise w/
engraved logo!



Your Local Authorized Dealer



