

# 2348 WISCONSIN AVENUE NW



2348 WISCONSIN AVE NW  
WASHINGTON, DC 20007



GLOVER PARK



3,100 TOTAL RETAIL SF

## BUILDING WITH ROOFTOP DECK FOR SALE



ILLUSTRATIVE RENDERING

ACTUAL



**DELIVERY:** Immediate

### SPACE AVAILABLE

**3,100 SF**

### DETAILS

- 3 stories + a cellar
- Fully permitted + full set of architectural plans
- Liquor license
- 2 car garage
- Architectural Plans include 5 Summer Gardens including rooftop deck on 3 levels (1,200 SF+ of outdoor space)

## DEMOGRAPHIC SNAPSHOT



### POPULATION

1/4 mi — 4,071  
1/2 mi — 11,259



### EMPLOYEES

1/4 mi — 1,033  
1/2 mi — 4,300



### MEDIAN HHI

1/4 mi — \$78,421  
1/2 mi — \$96,404



### EDUCATION

(Bachelor's Degree+)  
1/4 mi — 84.96%  
1/2 mi — 83.29%



### MEDIAN AGE

1/4 mi — 33.12  
1/2 mi — 33.09



### WALK SCORE

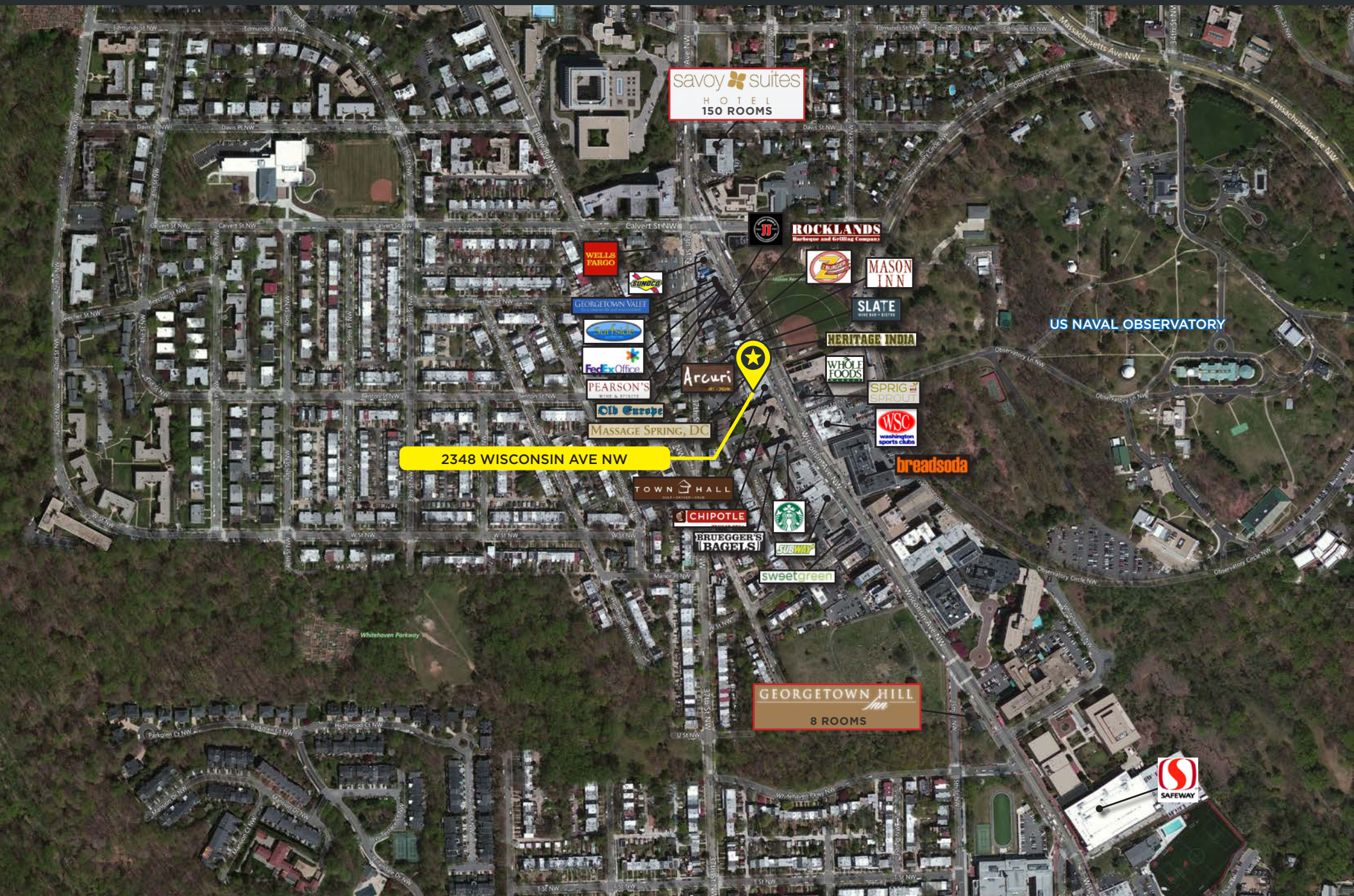
(88) Very Walkable  
Most errands can be accomplished on foot.

## CONTACT



**WESNEAL**  
202-577-4824  
wes@recondc.com

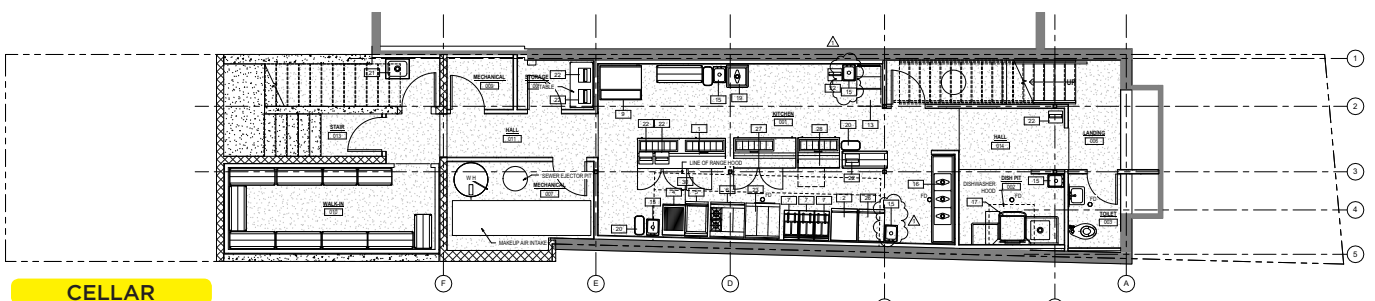
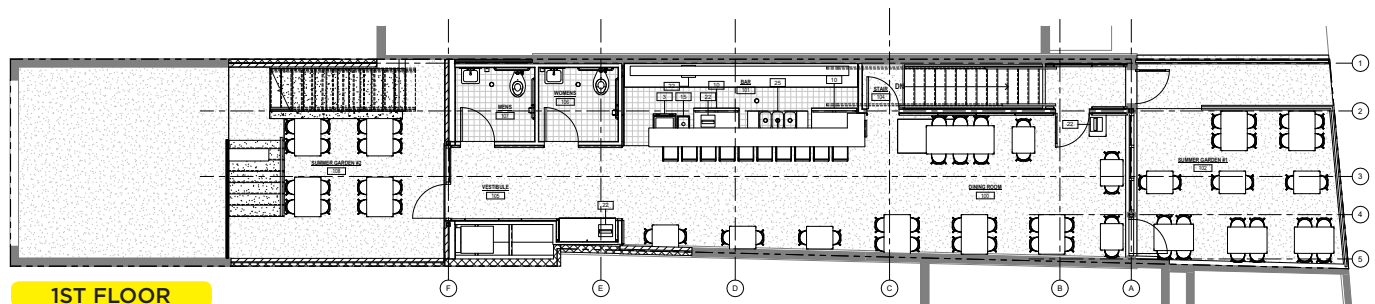
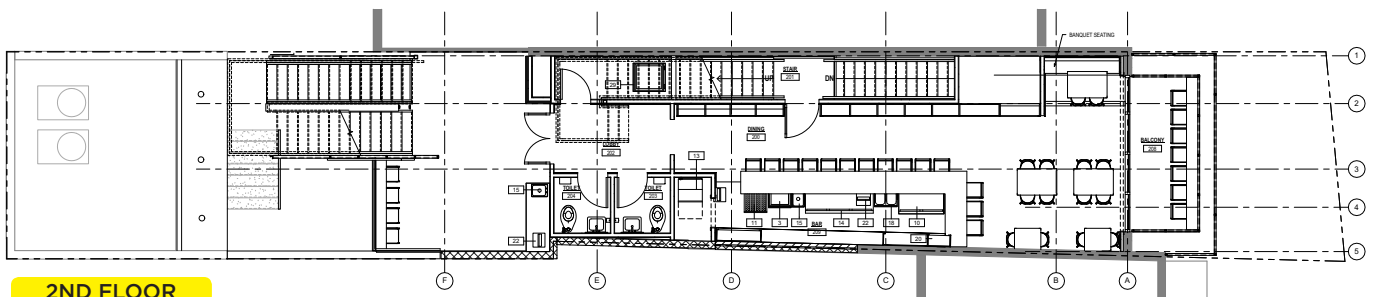
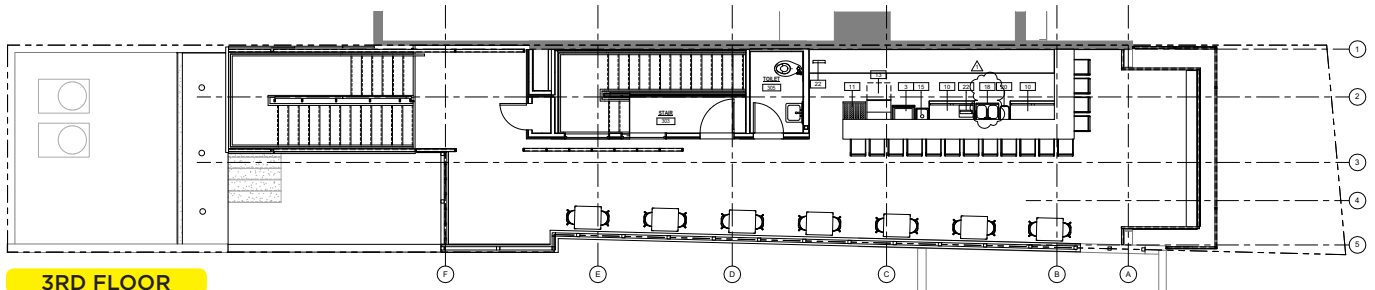












**WES NEAL**

202-577-4824

wes@recondc.com

©2018 CBRE, Inc. All rights reserved. This information has been obtained from sources believed reliable, but has not been verified for accuracy or completeness. You should conduct a careful, independent investigation of the property and verify all information. Any reliance on this information is solely at your own risk.

CBRE and the CBRE logo are service marks of CBRE, Inc. All other marks displayed on this document are the property of their respective owners.