

# 2408 WISCONSIN AVENUE NW



2408 WISCONSIN AVE NW  
WASHINGTON, DC 20007

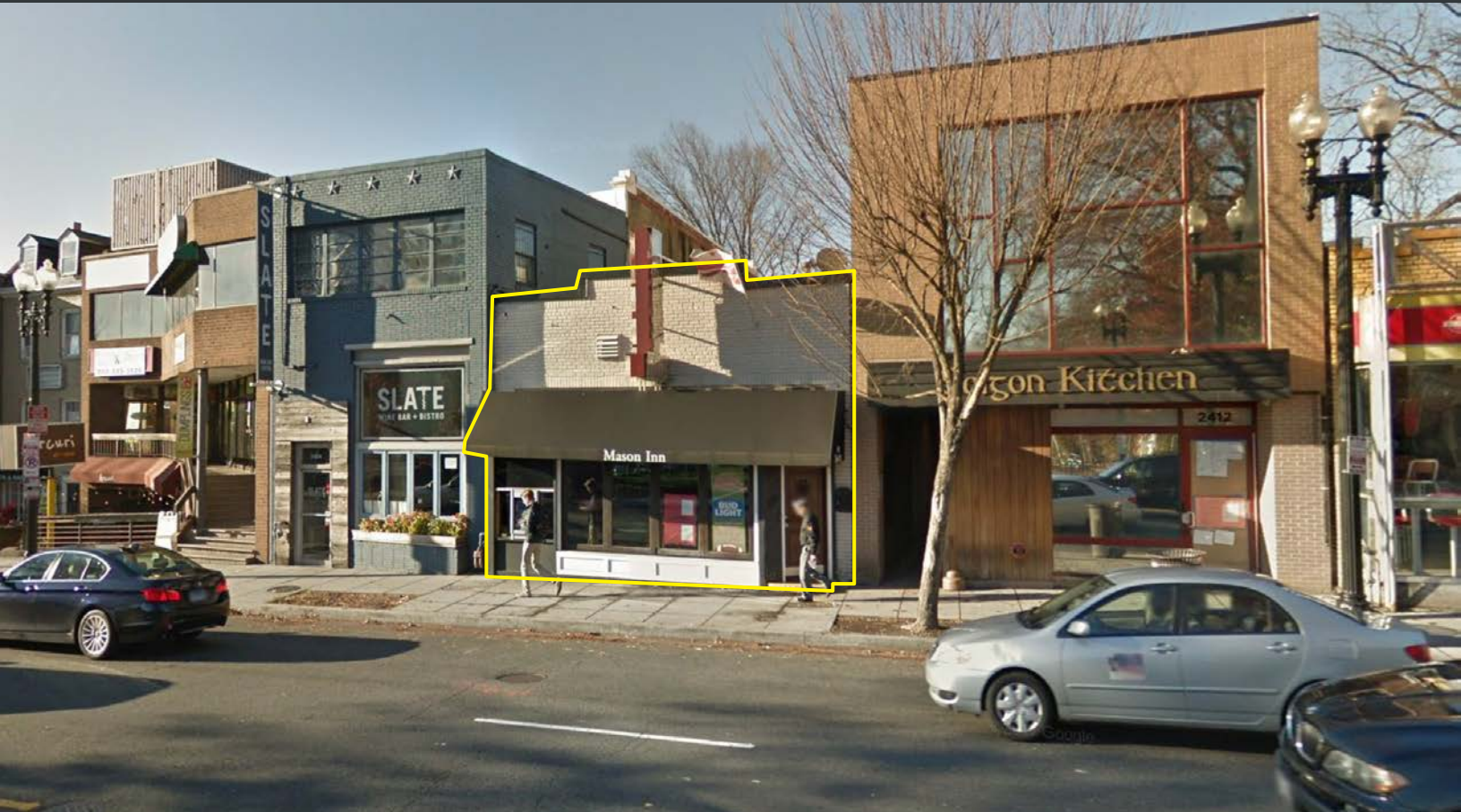


CATHEDRAL HEIGHTS /  
GEORGETOWN



3,938 TOTAL RETAIL SF

NEWLY CONSTRUCTED ROOFTOP PATIO WITH GREENSPACE + FANTASTIC BACKLIT BLADE SIGNAGE



## DEMOGRAPHIC SNAPSHOT



### POPULATION

.25 mi — 3,784  
.5 mi — 10,755



### EMPLOYEES

.25 mi — 5,117  
.5 mi — 8,074



### MEDIAN HHI

.25 mi — \$92,937  
.5 mi — \$102,455



### WALK SCORE

(75) Very Walkable  
Most errands can be  
accomplished on foot.



### EDUCATION

(Bachelor's Degree+)  
.25 mi — 79.9%  
.5 mi — 83.8%



### MEDIAN AGE

.25 mi — 32.50  
.5 mi — 32.80



### RIDERSHIP

(Woodley Park-Zoo Station)  
5,853 AWPB

**DELIVERY:** Immediate

### SPACE AVAILABLE

3,938 SF — Two Levels

### DETAILS

Situated in a particularly affluent part of NW, the property is centrally located between three of DC's wealthiest and most expensive neighborhoods — Cathedral Heights, Embassy Row and Georgetown. Just steps from Whole Foods, the property and surrounding neighborhood offers vibrant nightlife healthy daytime foot traffic.

**WES NEAL**  
202-577-4824  
wes@recondc.com



