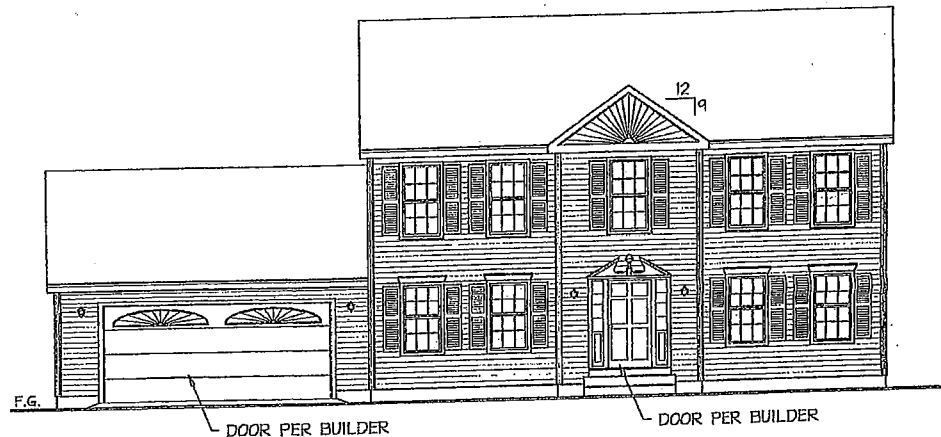
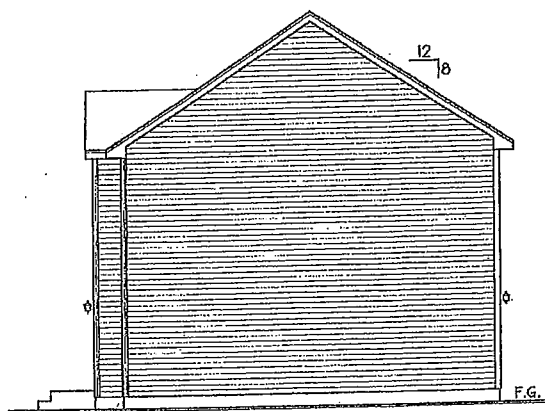


LEFT SIDE ELEVATION

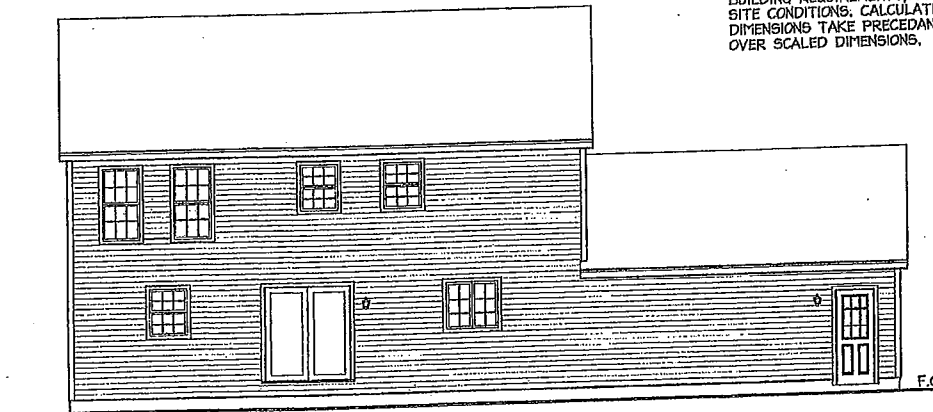


FRONT ELEVATION

NOTE:
ALL NOTES AND DIMENSIONS
ARE SUBJECT TO CHANGE
ACCORDING TO LOCAL CODES,
BUILDING REQUIREMENTS, AND
SITE CONDITIONS. CALCULATED
DIMENSIONS TAKE PRECEDANCE
OVER SCALED DIMENSIONS.



RIGHT SIDE ELEVATION



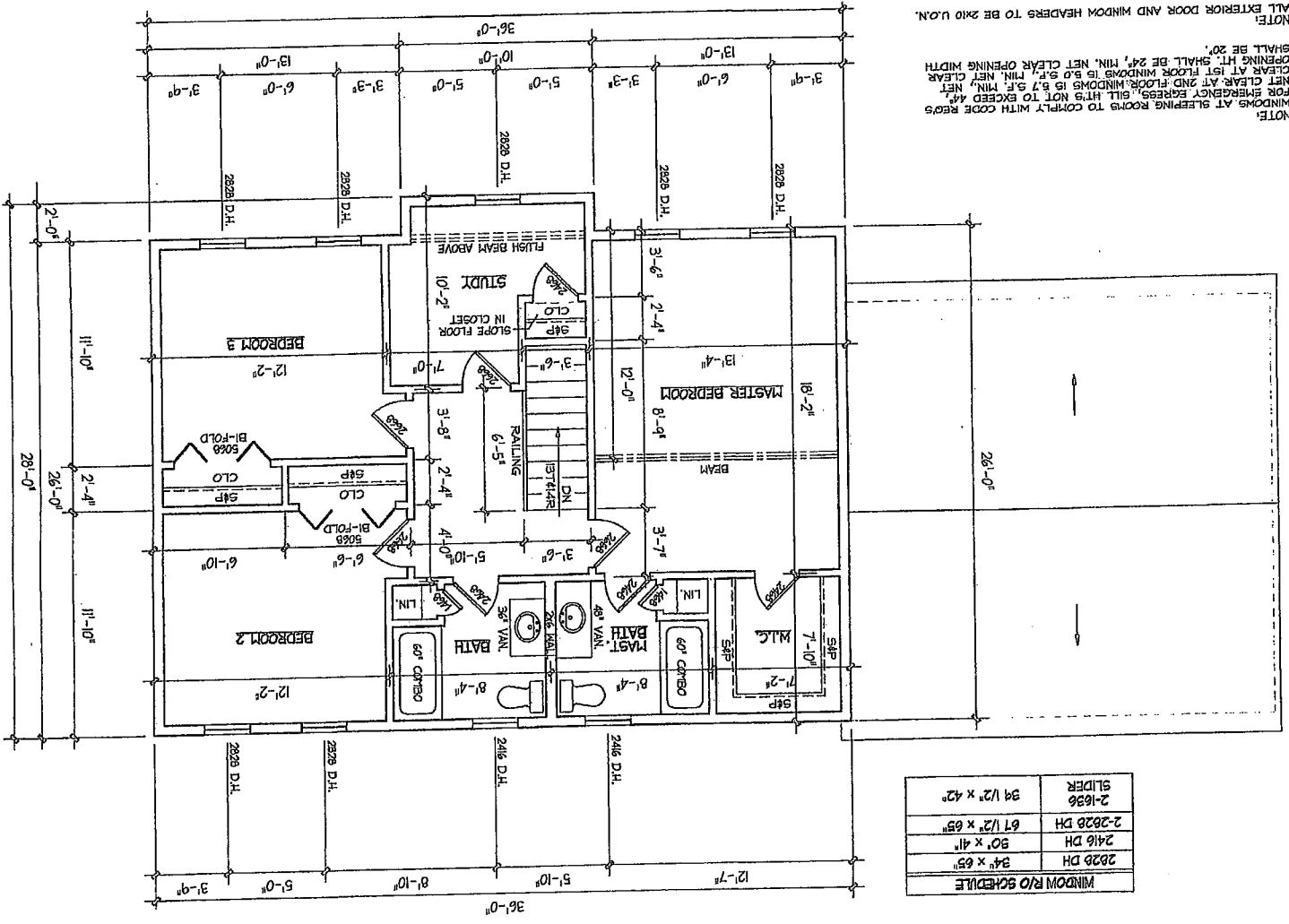
REAR ELEVATION

NOTE:
FINAL GRADE TO BE
FIELD VERIFIED.

NOTE: WINDOWS AT SLEEPING ROOMS TO COMPLY WITH CODE REQ'S FOR EMERGENCY EGRESS, SILL HT'S NOT TO EXCEED 44". NET CLEAR AT 2ND FLOOR WINDOWS IS 57 S.F. MIN, NET CLEAR AT 1ST FLOOR WINDOWS IS 5.0 S.F. MIN, NET CLEAR OPENING HT. SHALL BE 24" MIN, NET CLEAR OPENING WIDTH SHALL BE 20".

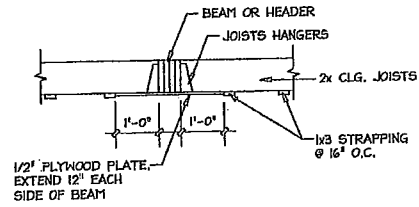
NOTE: ALL EXTERIOR DOOR AND WINDOW HEADERS TO BE 2X10 U.O.M.

NOTE: SEE SECTION SHEETS FOR BEAM AND HEADER DETAIL.



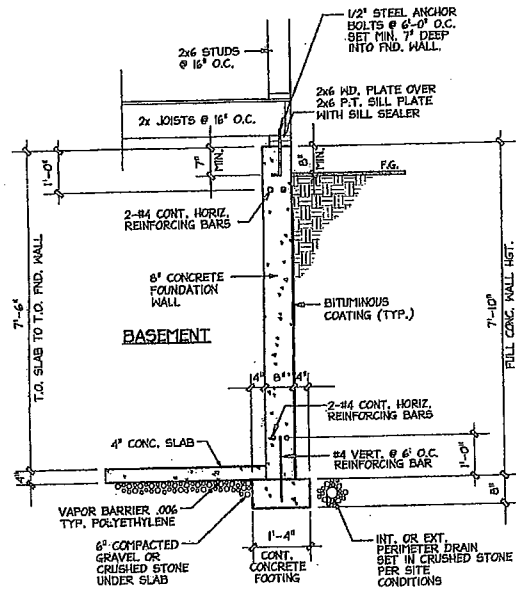
WINDOW R/O SCHEDULE

2028 DH	34" x 65"
2416 DH	50" x 41"
2-2828 DH	61 1/2" x 65"
2-1636 SLIDER	34 1/2" x 42"



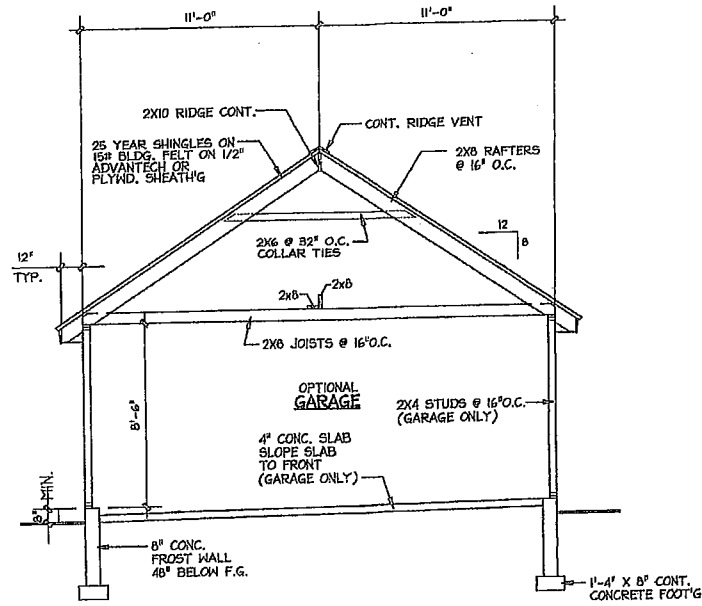
**FLUSH BEAM
 2ND FLOOR CLG.**

NOT TO SCALE



TYPICAL END WALL DETAIL

NOT TO SCALE



GARAGE SECTION

NOTE:
 SEE TYPICAL FND. DETAIL FOR MORE INFO ON FND.

NOTE:
 REFER TO SHEET A-5 FOR GENERAL NOTES.