

Options



Swing-down bracket



swing-out LPG bracket



Dual wheel



Upward Exhaust Pipe I



Mast Lock



Super elastic solid tires



Cabin



Rain Guard(Standard:Acrylics; Option:Glass)



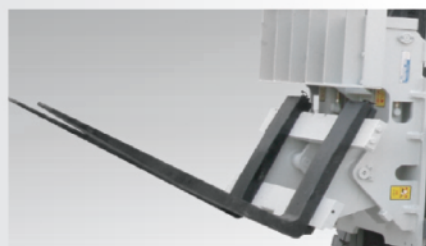
Climate controlled full cabin



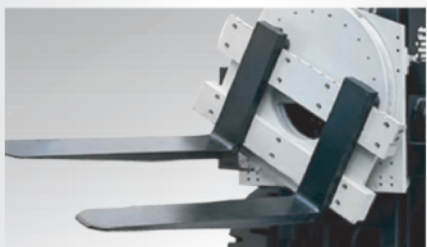
Pre-cleaner engine air intake



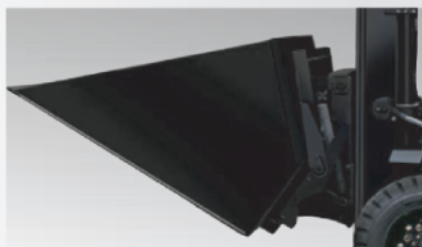
Side shift



Hinged Fork



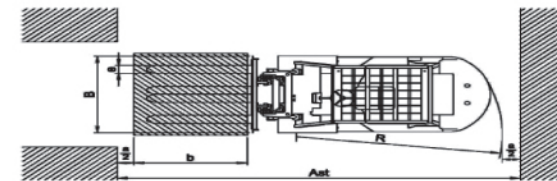
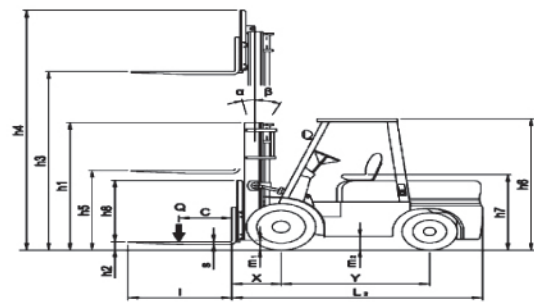
Rotating Fork



Shovel



Bale Clamp



Ast=X+R+b+a
b=Load Length
a=Clearance(200mm)

Specification

CHARACTERISTICS	1	Manufacturer				Tailift	Tailift	Tailift	Tailift
	2	Series				Z Series	Z Series	Z Series	Z Series
	3	Model				ZFD20P(PFD20) ZFG20P(PFG20)	ZFD25P(PFD25) ZFG25P(PFG25)	ZFD30P(PFD30) ZFG30P(PFG30)	ZFG35P(PFG36)
4	Capacity	Q	Load	lbs		4000	5000	6000	8000
5	Load center	C	Distance	in		24	24	24	24
6	Power type		Electric, Diesel, Gasoline, LPG			Diesel	LPG	Diesel	LPG
7	Operation type		Pedestrian, Stand, Sit			Sit	Sit	Sit	Sit
8	Tire type		S=Solide,P=Pneumatic	front/rear		P / P	P / P	P / P	P / P
9	Wheels (X=driven)		Number	front/rear		2X / 2	2X / 2	2X / 2	2X / 2
DIMENSIONS	10	h3	Lift	in		118.1	118.1	118.1	118.1
	11	h2	Standard free lift	in		0	0	0	0
	12	h5	Optional free lift	in		29.3	29.3	29.3	29.3
	13	h8	Height of load bracket	in		48.0	48.0	48.0	48.0
	14		Fork size			1.6x4.8x42	1.6x4.8x42	1.8x4.8x42	2.0x4.8x42
	15		Mast tilting angle	deg		6° / 12°	6° / 12°	6° / 12°	6° / 12°
	16	L2	Length to face of forks	in		102.4	102.4	108.7	113.6
	17	B	Total width/dual	in		45.4 / 61.5	45.4 / 61.5	50 / 66.2	50 / 66.2
	18	h1	Mast high lowered	in		78.7	78.7	78.7	78.7
	19	h4	Mast height extened(w/o bracket)	in		146.5	146.5	146.5	146.5
	20	h4	Mast height extened	in		166.1	166.1	166.1	166.1
	21	h6	Overhead guard height	in		83.9	83.9	85.4	85.4
	22	h7	Seat height	in		44.5	44.5	44.9	44.9
	23	R	Turning radius	in		87.8	87.8	94.5	102.4
	24	X	Load distance	in		19.7	19.7	20.3	20.3
CHASSIS	25	Ast	For load 800×1200/1000x1200	in		146.9/154.7	146.9/154.7	154.1/162	162/170
	26		number : front/rear			2/2	2/2	2/2	2/2
	27		Tire size			7.00-12-12P.R.	7.00-12-12P.R.	8.15-15-12P.R.	8.15-15-14P.R.
	28					6.00-9-10P.R.	6.00-9-10P.R.	6.50-10-10P.R.	6.50-10-10P.R.
	29	Y	Wheelbase	in		61	61	65	73
	30		Center of tires front (std/dual)	in		38.2(52.5)	38.2(52.5)	41.5(57.4)	41.5(57.4)
	31		Center of tires rear	in		38.8	38.8	38.8	38.8
POWER	32	m1	Ground clearance at lowest point	in		4.7	4.7	4.7	4.7
	33	m2	center of wheelbase	in		7.7	7.7	8.7	8.7
	34		Service brake operation/control			Hydraulic	Hydraulic	Hydraulic	Hydraulic
	35		Parking brake operation/control			Hand	Hand	Hand	Hand
36		Type				95D31R(H) 65D26R(H)	95D31R(H) 65D26R(H)	95D31R(H) 65D26R(H)	65D26R(H)
37		voltage	V			12	12	12	12
38		capacity	Ah/5hr			64 52	64 52	64 52	52
39		Dimention	in			12Lx6.8Wx8.9H 10.2Lx6.8Wx8.9H	12Lx6.8Wx8.9H 10.2Lx6.8Wx8.9H	12Lx6.8Wx8.9H 10.2Lx6.8Wx8.9H	10.2Lx6.8Wx8.9H
		Weight	lbs			49.8 38.3	49.8 38.3	49.8 38.3	38.3

* This is only for reference and not subject to notic in advance if there is any modification.

Engine

Model		ZFD20-25	ZFD20-35		ZFG20-35
Manufacturer		ISUZU	ISUZU	YANMAR	YANMAR
Engine model		C240PKF-23	4JG2	4TNE94	4TNE98
Rated Speed	rpm	2500	2450	2200	2450
Rated Output	Kw	34.6	44.8	34.2	44.1
Cylinders no. /displacement	No./L	4 / 2369	4/3059	4/3054	4/3319

Model		ZFD20-25	ZFD20-35		ZFG20-35
Manufacturer		ISUZU	ISUZU	YANMAR	YANMAR
Engine model		C240PKF-23	4JG2	4TNE94	4TNE98
Rated Speed	rpm	2500	2450	2200	2450
Rated Output	Kw	34.6	44.8	34.2	44.1
Cylinders no. /displacement	No./L	4 / 2369	4/3059	4/3054	4/3319



TAILIFT MATERIAL HANDLING TAIWAN CO., LTD.

No. 5, Zili 1st Road, Nankang Industrial Zone, Nantou city 540, TAIWAN
Tel: +886-49-2263800 Fax: +886-49- 2252919
Website: www.tailift.com E-mail: insales@tailift.com.tw

TAILIFT MATERIAL HANDLING USA,Inc.

5550 Jurupa St, Ontario, CA 91761
TEL: (909) 930-9801, (909) 930-9802 FAX: (909) 930-9739
Website: www.tailift-usa.com

DOC.S/N: DEB 073 Edition:01



www.tailift-usa.com

Tailift



Z

Series / 4,000lbs - 8,000lbs

DIESEL / LPG

Brand New Economy Truck Stable & Indurable



FUNCTION/PERFORMANCE



Multifunctional Instrument panel

Easy read instrument panel installs in between steering wheel and left front side wind shield. It display the status of forklift performance without interfering by steering wheel operations.



Internal hidden tilt cylinder

Internal tilt cylinder avoids and reduces scrape possibility. Enlarge access space and given better appearance.

Non-slip entry step

Large foot space and non-slip make the operator get on and get off the vehicle more easily.



Adjustable steering wheel column

Compact steering column panel is with streamline design. Provide flexible operations & great comfort.



Integral heavy duty chassis

A strong no-bolt integral heavy duty chassis gives the driver more protection from falling loads, suite for all kind working surface.



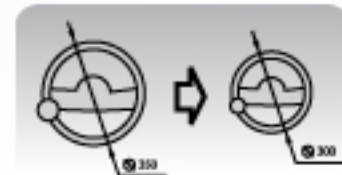
Comfortable seat (*option)

- Ergonomic sharp design and adjustable backrest
- Adjustable forward and reverse,
- Retractable safety belt
- Document bag



EASY AND SMOOTH TURNING

Smaller steering wheel + New rear axle



Smaller 300mm steering wheel easy to operate and reduce operator's arm and shoulder's workload.



The new axle provides wider steering angles to 80 degree and reduces to a smaller turning radius.

LED light

Independent front light, rear light and directional lights. Provide longer service life with much lower power consumption.



Hydraulic control levers

The mechanical-hydraulic control lever disposed at the front of the panel. The ergonomic headlines designed to help reduce the driver's arm fatigue.



Hand Brake

Hand brake is equipped with micro switch to avoid improper touch accidentally and to ensure the safety.



SPACIOUS OPERATION SPACE



Accelerate/Brake/ Inching pedal all configurations with ergonomic design. Wide-open foot space provides the comfortable foot activity space. It is about 30% wider than 7 series. The enlarged space give operator great comfortable and less stress, make the operator get on or get off the vehicle more easily.

ERGONOMICS

Clear view for operator



Excellent top view



Excellent rear view

Excellent front view



Excellent down view

Easy maintenance

- Engine hood using iron material. Features include heat-resistant, non-slip, scratch-resistant and the structure can withstand 450KG heavy weight.
- Engine hood with 70 degrees opening angles.
- Engine hood fix button easily opened and fixed, strong and durable
- The detachable foot pedal without bolts can be easily moved away without the tools.
- Compact fuse box for easy and quick inspection
- Easy change air cleaner



Engine



High performance low fuel consumption engines

The strong but low emission engine will satisfy the operators in any given circumstance, time and time again. New 9L Plus series using high performance and low fuel consumption engines include Isuzu, Yanmar and Nissan engines. All engines meet latest emission regulations.