



**Standard TC
(Tissue Culture-treated)
cell culture
plate/dish/flask**



Overview

Cell culture plate /dish /flask are typically made of virgin polystyrene or clear glass, In order to facilitate distortion-free microscopic observation. Protective lids match with and can come vented for consistent gas exchange. They take on a variety of sizes in single or multi-well formats, wall thickness, in variable surface area, and with stacking rims, may appear round or rectangular. Our factory have Class 100,000 clean room, our product meets USP, Class VI requirements for plastic containers and closures. color concentration. heavy metal free .Advanced Surfaces Treatment Cell Culture Plate /Dish /Flask is our leading technical advantage.

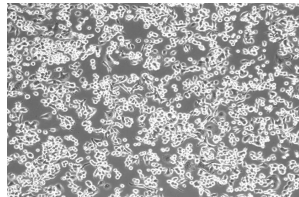
Advantage

- ✓ Standard TC (Tissue Culture-treated) advanced processing optimize cell adherence, ensure that the cell adheres to the wall more uniform, more stable, better adsorption capacity.
- ✓ Vacuum-gas plasma TC treatment permanently and consistently modifies the cell growth surface to promote cell adherence.
- ✓ Crystal-grade virgin polystyrene, distortion-free.
- ✓ Nonreversible lids with condensation rings to reduce contamination.
- ✓ Non-Pyrogenic, DNase/Rnase free.
- ✓ Sterilized by Electron beam irradiation.

Application

Adherence cell culture .

Morphology of Cells in Culture



Case 1.
AsPC-1
Organ : pancreas
Type: adenocarcinoma
derived from metastatic
site: ascites

AsPC-1 cells in xx cm² dish

Fibroblast-like
Epithelial-like cells
Lymphoblast-like cells

有没有左边三类细胞的彩色图片