

[illegible]

A schematic diagram of a large, empty rectangular container, possibly a tank or storage bin. The container has a thick frame and a small circular feature on the right side. On the left side, there is a control panel with a rectangular display or window, several small circular indicators or buttons, and a section with a hexagonal pattern. The container is shown in a perspective view, with a top and bottom edge visible.

CUSTOMER APPROVAL

- ☐ APPROVED
- ☐ APPROVED EXCEPT AS NOTED
- ☐ REVISE AS NOTED AND RESUBMIT
- ☐ SEE LETTER OF TRANSMITTAL

APPROVED BY _____

DATE _____

THIS PRINT MUST BE SIGNED, DATED, AND
RETURNED TO YOUR SALES REPRESENTATIVE
AT THERMOBOND

NOTE: ALL PAGES MUST BE SIGNED

THIS DOCUMENT AND ALL INFORMATION CONTAINED HEREIN ARE THE PROPRIETARY DATA AND TRADE SECRETS OF THERMOBOND. THIS DOCUMENT AND THE INFORMATION CONTAINED HEREIN MAY NOT BE REPRODUCED, USED OR DISCLOSED IN ANY MANNER OR TO ANY EXTENT (EXCEPT BY OR TO THERMOBOND) WITHOUT THE PRIOR WRITTEN AUTHORIZATION OF THERMOBOND.

C1.0

ELECTRICAL NOTES:

- 1. ALL WIRING SHALL BE IN ACCORDANCE WITH THE APPLICABLE EDITION OF THE NEC.
- 2. ALL ELECTRICAL MATERIALS SHALL BE U.L. LISTED AND CLASSIFIED AS SUITABLE FOR THE PURPOSE SPECIFIED.
- 3. ALL WIRING SHALL BE SURFACE MOUNTED IN A RACEWAY OR EMT CONDUIT USING APPROVED CONNECTORS, COUPLINGS, AND CLAMPS. ALL CONDUIT SHALL BE ANCHORED IN PLACE AT APPROXIMATELY EVERY 4 FT ON CONDUIT RUNS. ANCHORED IN PLACE A MAXIMUM OF 3' FROM EVERY ELECTRICAL BOX.
- 4. ALL WIRING SHALL BE A STRANDED CONDUCTOR.
- 5. ALL WIRING SHALL BE TESTED AND INSPECTED PRIOR TO SHIPMENT.
- 6. GREEN GROUND CONDUCTORS SHALL BE RUN TO ALL OF THE BUILDINGS A/C POWERED DEVICES. CONDUIT SHALL NOT BE USED AS THE SOLE SOURCE OF GROUND.
- 7. ALL ALARM DEVICE WIRING SHALL BE RUN IN ITS OWN CONDUIT.
- 8. MINIMUM EMT CONDUIT SIZE SHALL BE TRADE SIZE 16 (1/2")
- 9. ELECTRICAL CONDUIT COUPLERS WILL BE STANDARD SCREW TYPE FITTINGS.

GENERAL NOTES:

- 1. LABEL FACE OF ALL ELECTRICAL EQUIPMENT WITH BLACK LABELS WITH WHITE LETTERS. EXCEPTION SHALL BE ALL UPS AND DC EQUIPMENT WHICH WILL HAVE RED LABELS WITH WHITE LETTERS.
- 2. PROPER DOOR FUNCTION WAS VERIFIED AT THE FACTORY. HOWEVER, DUE TO BUILDING MOVEMENT DURING SHIPPING, IT'S THE CUSTOMER'S RESPONSIBILITY TO VERIFY PROPER DOOR OPERATION, AND ADJUST AS NECESSARY, AFTER THE BUILDING IS SET AND ANCHORED.

INTEGRATION NOTES:

STANDARD HALO

- 1. HALO GROUND TO BE BARE #2 AWG.
- 2. CABLE LADDER TO BE MOUNTED AT 7'-2" A.F.F.

REVISION LOG

REV	BY	DATE	DESCRIPTION
1			
2			
3			
4			
5			
6			
7			
8			
9			
10			
11			
12			
13			
14			
15			

ITEMS SHIPPED LOOSE

ITEM	QTY	UM	DESCRIPTION	MFR PART NUMBER	TBB PART NUMBER
1	4	EA	LIFTING LUGS		001-2059
2	4	EA	TIE DOWN PLATES		001-104-BLACK
3	8	EA	TIE DOWN BOLTS		001-2169
4	8	EA	BLACK PLASTIC BASE PLUGS		001-2351
5	1	EA	OPEN BOX OF EXTRA FLOOR TILES		399-0671
6	1	EA	TUBE OF BRILLIANT WHITE CAULK		399-0197
7	4	EA	TUBES OF BLACK DYMONIC CAULK		
8	1	EA	PINT CAN OF BLACK PAINT		599-1942 & 001-
9	1	EA	PINT CAN OF BRICK RED PAINT		599-1942 & 001-2370
10	25	EA	1/8" SHIMS FOR SHELTER SET		001-2206
11	25	EA	1/4" SHIMS FOR SHELTER SET		001-2207
12					
13					
14					
15					

EXTERIOR FINISH SCHEDULE

ITEM	SURFACE	FINISH	PAINT COLOR
ROOF	BROOM FINISH	SEALED, ELASTOMERIC COARSE PAINT	WHITE
WALLS	BROOM FINISH	CONCRETE COLORTOP STAIN & SEAL	BLACK
DOORS	STEEL, RATED	PAINT	BRICK RED
JOINTS	AS FINISHED	SEALED PER DETAILS SHEET	BLACK

CUSTOMER APPROVAL

- ☐ APPROVED
- ☐ APPROVED EXCEPT AS NOTED
- ☐ REVISE AS NOTED AND RESUBMIT
- ☐ SEE LETTER OF TRANSMITTAL

APPROVED BY _____
DATE _____

THIS PRINT MUST BE SIGNED, DATED, AND
RETURNED TO YOUR SALES REPRESENTATIVE
AT THERMOBOND

NOTE: ALL PAGES MUST BE SIGNED

SEE SHEET S1 FOR CONSTRUCTION NOTES

THERMO BOND

BUILDINGS



1001 W. Main St.
Elk Point, SD 57025
605-356-2090

58120 County Road 3
Elkhart, IN 46517
574-295-1214

www.thermobond.com

THIS DOCUMENT AND ALL
INFORMATION CONTAINED HEREIN
ARE THE PROPRIETARY DATA AND
TRADE SECRETS OF THERMOBOND.
THIS DOCUMENT AND THE
INFORMATION CONTAINED HEREIN
MAY NOT BE REPRODUCED, USED
OR DISCLOSED IN ANY MANNER OR
TO ANY EXTENT (EXCEPT BY OR TO
THERMOBOND) WITHOUT THE
PRIOR WRITTEN AUTHORIZATION
OF THERMOBOND.

PROJECT SERIAL NUMBER:

2208-309

SHELTER SIZE:

8'-0"W OD X 12'-0" OD X 9'H ID

PROJECT NAME:

AXIOM TECHNOLOGIES

SITE NAME:

LEEDS, ME

DRAWN:

4/14/23

REVISION #:

-

DRAWN BY:

JWW

REVISED:

-

SHEET NAME:

REVISION & NOTES

DRAWING NUMBER:

TBB1659

SHEET NUMBER:

C2.0

MATERIALS LIST							
ITEM	QTY	UM	DESCRIPTION	MANUFACTURER	MFR PART NUMBER	TBB PART NUMBER	NOTE
1	1	EA	3070 FRAME - RHR	MESKER	F SERIES	099-0893	6
	1	EA	3070 DOOR - SPECIAL PREP	MESKER	NP SERIES	099-0924	6
	1	EA	PAINT 3/0 X 7/0 DOOR/FRAME TELECOM BROWN	GLOBAL	16A	099-1419	7
	1	EA	MAGNETIC WEATHER STRIPPING (3070)	PEMKO	2815CM	099-0830	7
	1	EA	36" THRESHOLD	HAGER	415S	099-0896	7
	1	EA	36" THRESHOLD STOP	HAGER	481S	099-0897	7
	1	EA	36" NEOPRENE STYLE DOOR SWEEP	DESIGN HARDWARE	SW-R	099-1373	7
	1	EA	40" DRIP CAP	HAGER	810S	099-0899	7
	1	EA	NRP-SS HINGES, SET OF 3	HAGER	ECBB1100NRP	099-0895	7
	1	EA	PUSHBUTTON LOCKSET	KABA	5021-BWL-26D-41	099-0045	7
	1	EA	CONSTRUCTION CORE w/KEY MT-1	CENTRAL IN HARDWARE	1C-7D1-STD-626	099-003	7
	1	EA	STAY CHAIN	HAGER	300D	099-0903	7
	1	EA	DOOR BUMPER	MCMaster CARR	9540K796	099-0331	7
	1	EA	"T" TIE BACK	ALLEGIS CORP	EMC 5601	099-0018	7
2	1	EA	1.5 TON HVAC W/5KW HEAT	BARD	W18AB-A05BPXX3J	899-923Y	8
	1	EA	SUPPLY GRILL	BARD	SG-2		8
	1	EA	RETURN GRILL	BARD	RG-2		8
3	1	EA	DIGITAL THERMOSTAT WITH AUTO CHANGEOVER	ATEX	BD7819	100-0568	8
4	1	EA	100A LOAD CENTER, 3φ/4W	SQUARE D	QO327M100	200-0176	8,12
	1	EA	LOAD CENTER COVER	SQUARE D	QOC30US	200-0162	8
	1	EA	GROUND BAR	SQUARE D	PK27GTA	200-0706	8
	1	EA	CKT BKR, 2/60A	SQUARE D	QO260	200-0066	8
	5	EA	CKT BKR, 2/30A	SQUARE D	QO230	200-0060	8
	1	EA	CKT BKR, 2/20A	SQUARE D	QO220	200-0058	8
	9	EA	CKT BKR, 1/20A	SQUARE D	QO120	200-0052	8
5	1	EA	SURGE ARRESTOR, 120/208, 3φ 170kA	MTL	ZM1101	100-0086	8,12
6	4	EA	TWIST-LOCK RECEPTACLE, 30A 240V	HUBBELL	HBL2620	800-0042	7,12
7	4	EA	TWIST-LOCK RECEPTACLE, 20A 120V	HUBBELL	HBL2310	800-0037	7,12
8	4	EA	DUPLEX RECEPTACLE	LEVITON	BR20-GY	800-119	7,12
9	1	EA	WEATHERPROOF GFCI RECEPTACLE	LEVITON	GFWT2-GY	800-0034	8
10	1	EA	SINGLE POLE SWITCH	LEVITON	1221-SGY	800-0058	7
11	1	EA	SINGLE POLE SWITCH WITH OCCUPANCY SENSOR	LUTRON	MS-OPS5M-WH	500-0119	7
12	3	EA	48" LINEAR LED STRIP LIGHT (27W)	COLUMBIA LIGHTING	LAW4-40-VW-E-U	500-0583	7
13	1	EA	LED EXTERIOR LIGHT W/PHOTOCELL- WHITE	RAB	SLIM12/PC	500-0672	7
14	1	EA	IONIZATION DETECTOR WITH RELAY - 100-051	BRK	9120/RM4	100-0186 & 100-0184	7
15	3	EA	THREE PHASE POWER FAIL RELAY - 100-0564	OMRON	G7J-2A2B-B-W1-AC100/120	100-564	7,12
	1	EA	ENCLOSURE, N1, 8 X 8 X 4 - 300-0011	B-LINE	884SCGV		7
16	1	EA	16" X 12" X 6" HINGED ALARM CABINET	B-LINE	16126HC	300-023	7,12
	1	EA	66 BLOCK WITH BRACKET - 050-001	SUTTLE	66M1-50-C5 & A89B		7
17	1	EA	DOOR ALARM	SENTROL	1047T	100-0231	7,12
18	2	EA	TEMPERATURE ALARM	DAYTON	GRAINGER# 1UHH2	100-0016	8,12
19	1	EA	12" CABLE LADDER, WALL BRACKET, 10" GRAY	METAL TECH PARTNERS	CLR-12-2	900-186	7
20	1	EA	BOM, INTERIOR GROUND BAR, 20" STOCK	HARGER	GBI14420TBI	915-054	8
21	1	EA	FOLDING WORKSTATION			399-0489	7
22	1	EA	10LB FIRE EXTINGUISHER, CLASS ABC			399-0050	2,7
23	1	EA	WALL POCKET	AMAZON BASICS	DHBTB017	001-2048	7
24	1	EA	EYE WASH	HONEYWELL	GRAINGER# 3ARD6	399-0255	7
25	1	EA	FIRST AID KIT			399-0047	7
26	1	EA	SPILL KIT			599-1154	7
27	1	EA	4" WIREWAY, 5FT	B-LINE	4460 G NK	300-0040	7
	2	EA	4" WIREWAY, 3FT	B-LINE	4436 G NK	300-0107	7
	1	EA	4" WIREWAY 90	B-LINE	44 L SIDE	300-0246	7
	1	EA	4" WIREWAY 90, SWEEP	B-LINE	44 L SWEEP	300-0050	7
	4	EA	4" WIREWAY CONNECTER	B-LINE	44 C	300-0049	7
	2	EA	4" WIREWAY END CAP	B-LINE	44 E NK	300-0028	7
28							
29							
30							
31							
39							
40							

ITEMS DENOTED WITH A 1 OR 2 ARE SHIPPED LOOSE

MATERIAL LIST NOTES:

1. SHIP LOOSE
2. PRE-INSTALL REMOVE FOR SHIPMENT
3. FABRICATED ITEM
4. PAINT - TELECOM BROWN
5. PAINT - TELECOM GRAY
6. PAINT - COLOR DESIGNATED
7. OR EQUIVALENT
8. NO SUBSTITUTIONS ALLOWED
9. NO PART NUMBER SPECIFIED
10. MAY BE DELIVERED AT SITE
11. PROVIDED BY OTHERS
12. LABEL
13. QUANTITY ESTIMATED

CUSTOMER APPROVAL

- ☐ APPROVED
- ☐ APPROVED EXCEPT AS NOTED
- ☐ REVISE AS NOTED AND RESUBMIT
- ☐ SEE LETTER OF TRANSMITTAL

APPROVED BY _____
DATE _____

THIS PRINT MUST BE SIGNED, DATED, AND
RETURNED TO YOUR SALES REPRESENTATIVE
AT THERMOBOND

NOTE: ALL PAGES MUST BE SIGNED

THERMO BOND

BUILDINGS



1001 W. Main St.
Elk Point, SD 57025
605-356-2090

58120 County Road 3
Elkhart, IN 46517
574-295-1214

www.thermobond.com

THIS DOCUMENT AND ALL
INFORMATION CONTAINED HEREIN
ARE THE PROPRIETARY DATA AND
TRADE SECRETS OF THERMOBOND.
THIS DOCUMENT AND THE
INFORMATION CONTAINED HEREIN
MAY NOT BE REPRODUCED, USED
OR DISCLOSED IN ANY MANNER OR
TO ANY EXTENT (EXCEPT BY OR TO
THERMOBOND) WITHOUT THE
PRIOR WRITTEN AUTHORIZATION
OF THERMOBOND.

PROJECT SERIAL NUMBER:

2208-309

SHELTER SIZE:

8'-0"W OD X 12'-0" OD X 9'H ID

PROJECT NAME:

AXIOM TECHNOLOGIES

SITE NAME:

LEEDS, ME

DRAWN:

4/14/23

REVISION #:

-

DRAWN BY:

JWW

REVISED:

-

SHEET NAME:

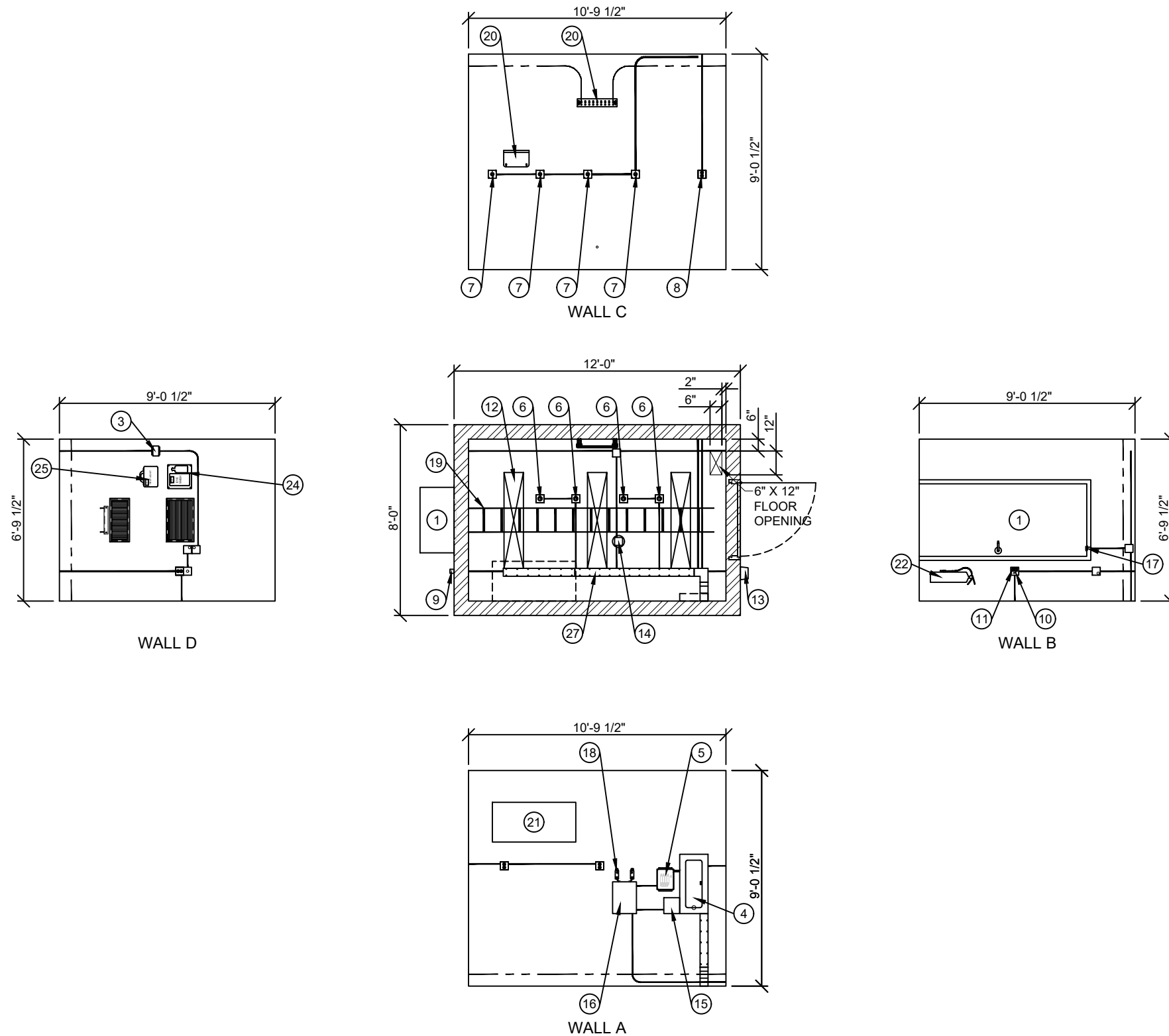
BILL OF MATERIALS

DRAWING NUMBER:

TBB1659

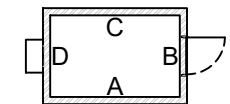
SHEET NUMBER:

C3.0



FLOOR PLAN

SCALE: 3/16" = 1'-0"



CUSTOMER APPROVAL

- ☐ APPROVED
- ☐ APPROVED EXCEPT AS NOTED
- ☐ REVISE AS NOTED AND RESUBMIT
- ☐ SEE LETTER OF TRANSMITTAL

APPROVED BY _____
DATE _____

THIS PRINT MUST BE SIGNED, DATED, AND
RETURNED TO YOUR SALES REPRESENTATIVE
AT THERMOBOND

NOTE: ALL PAGES MUST BE SIGNED

ALL CONDUIT IS APPROXIMATE AND MAY NOT REFLECT ACTUAL RUNS.



THIS DOCUMENT AND ALL
INFORMATION CONTAINED HEREIN
ARE THE PROPRIETARY DATA AND
TRADE SECRETS OF THERMOBOND.
THIS DOCUMENT AND THE
INFORMATION CONTAINED HEREIN
MAY NOT BE REPRODUCED, USED
OR DISCLOSED IN ANY MANNER OR
TO ANY EXTENT (EXCEPT BY OR TO
THERMOBOND) WITHOUT THE
PRIOR WRITTEN AUTHORIZATION
OF THERMOBOND.

PROJECT SERIAL NUMBER:

2208-309

SHELTER SIZE:

8'-0"W OD X 12'-0" OD X 9'H ID

PROJECT NAME:

AXIOM TECHNOLOGIES

SITE NAME:

LEEDS, ME

DRAWN:

4/14/23

REVISION #:

-

DRAWN BY:

JWW

REVISED:

-

SHEET NAME:

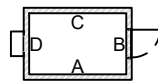
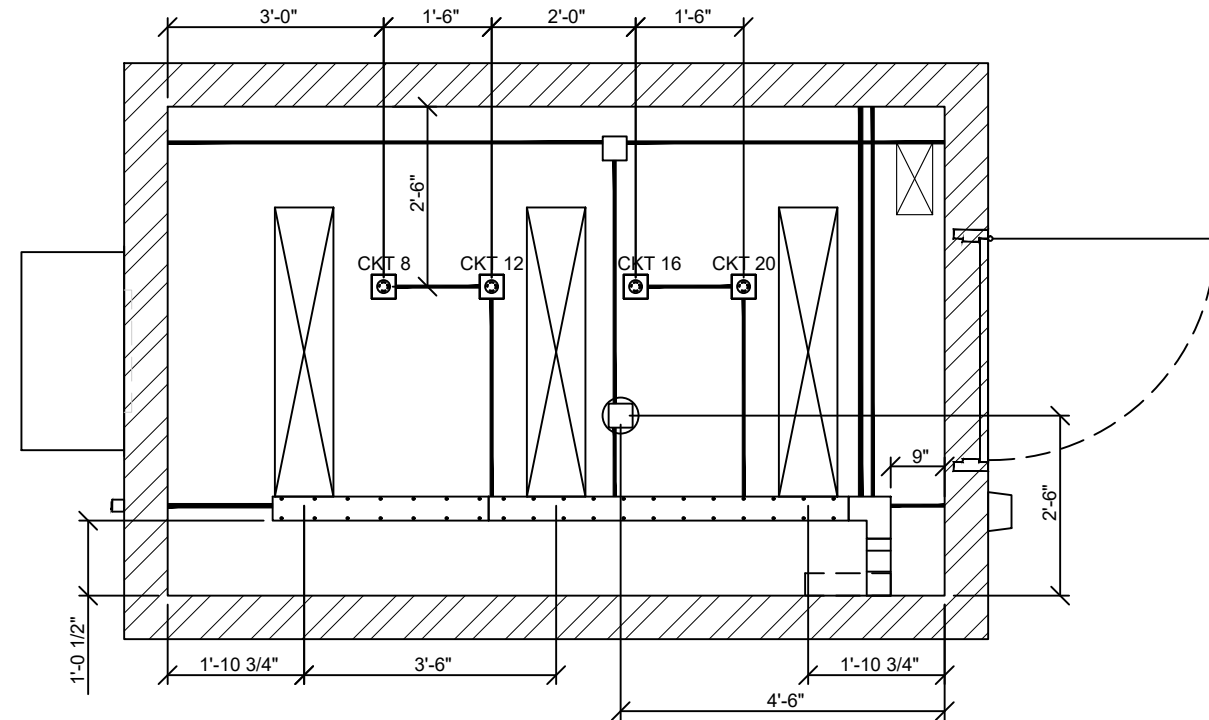
OVERALL FLOOR PLAN

DRAWING NUMBER:

TBB1659

SHEET NUMBER:

A1.0



ALL CONDUIT IS APPROXIMATE AND MAY NOT REFLECT ACTUAL RUNS.

REFLECTED CEILING

SCALE: 1/2" = 1'-0"

CUSTOMER APPROVAL

- ☐ APPROVED
- ☐ APPROVED EXCEPT AS NOTED
- ☐ REVISE AS NOTED AND RESUBMIT
- ☐ SEE LETTER OF TRANSMITTAL

APPROVED BY _____
DATE _____

THIS PRINT MUST BE SIGNED, DATED, AND
RETURNED TO YOUR SALES REPRESENTATIVE
AT THERMOBOND

NOTE: ALL PAGES MUST BE SIGNED

PROJECT SERIAL NUMBER:

2208-309

SHELTER SIZE:

8'-0"W OD X 12'-0" OD X 9'H ID

PROJECT NAME:

AXIOM TECHNOLOGIES

SITE NAME:

LEEDS, ME

DRAWN:

4/14/23

REVISION #:

-

DRAWN BY:

JWW

REVISED:

-

SHEET NAME:

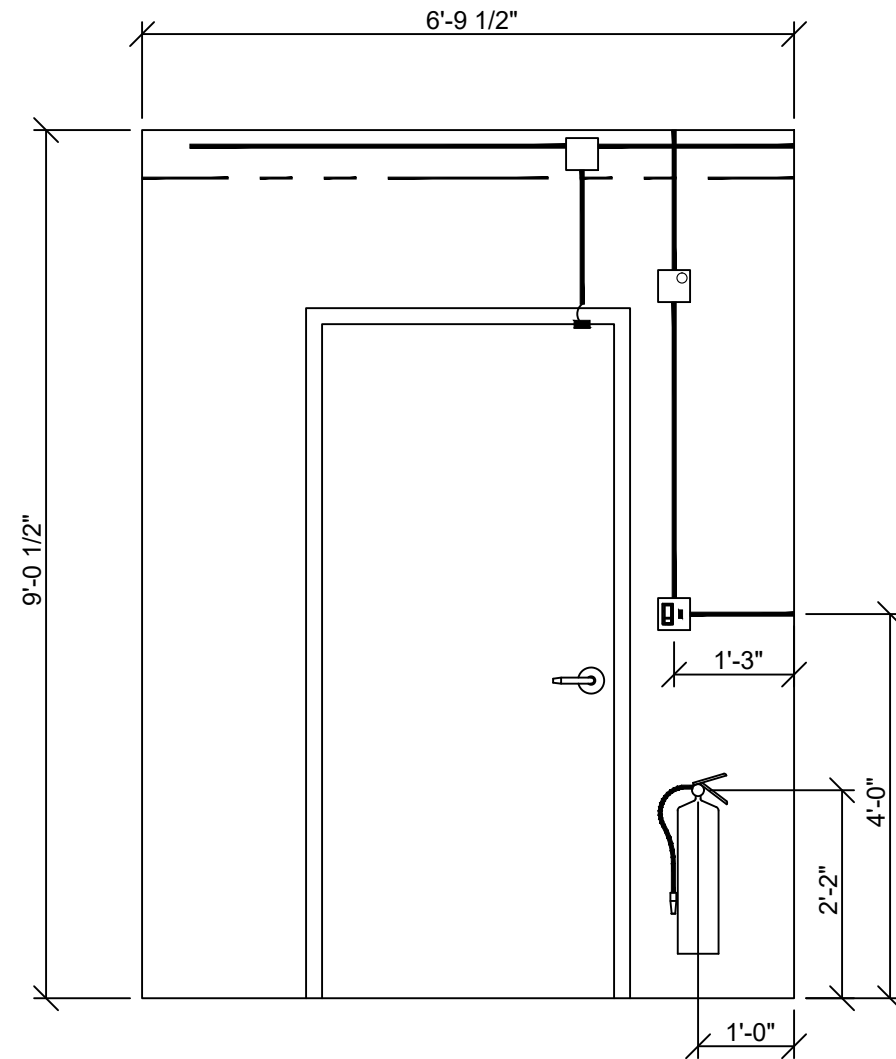
REFLECTED CEILING

DRAWING NUMBER:

TBB1659

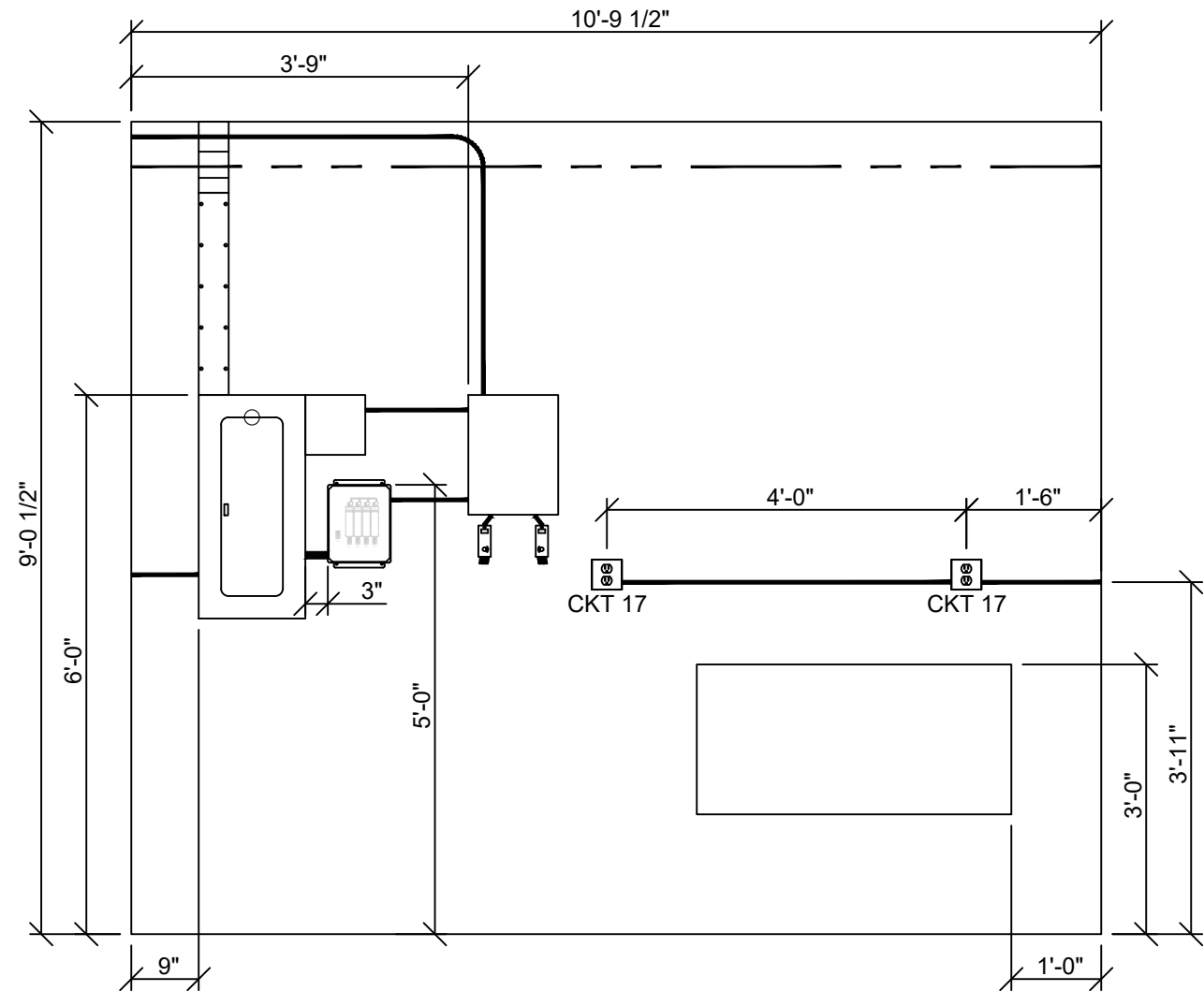
SHEET NUMBER:

A1.1



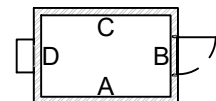
WALL B

SCALE: 1/2" = 1'-0"



WALL A

SCALE: 1/2" = 1'-0"



ALL CONDUIT IS APPROXIMATE AND MAY NOT REFLECT ACTUAL RUNS.

CUSTOMER APPROVAL

- ☐ APPROVED
- ☐ APPROVED EXCEPT AS NOTED
- ☐ REVISE AS NOTED AND RESUBMIT
- ☐ SEE LETTER OF TRANSMITTAL

APPROVED BY _____
DATE _____

THIS PRINT MUST BE SIGNED, DATED, AND
RETURNED TO YOUR SALES REPRESENTATIVE
AT THERMOBOND

NOTE: ALL PAGES MUST BE SIGNED

PROJECT SERIAL NUMBER:

2208-309

SHELTER SIZE:

8'-0"W OD X 12'-0" OD X 9'H ID

PROJECT NAME:

AXIOM TECHNOLOGIES

SITE NAME:

LEEDS, ME

DRAWN:

4/14/23

REVISION #:

-

DRAWN BY:

JWW

REVISED:

-

SHEET NAME:

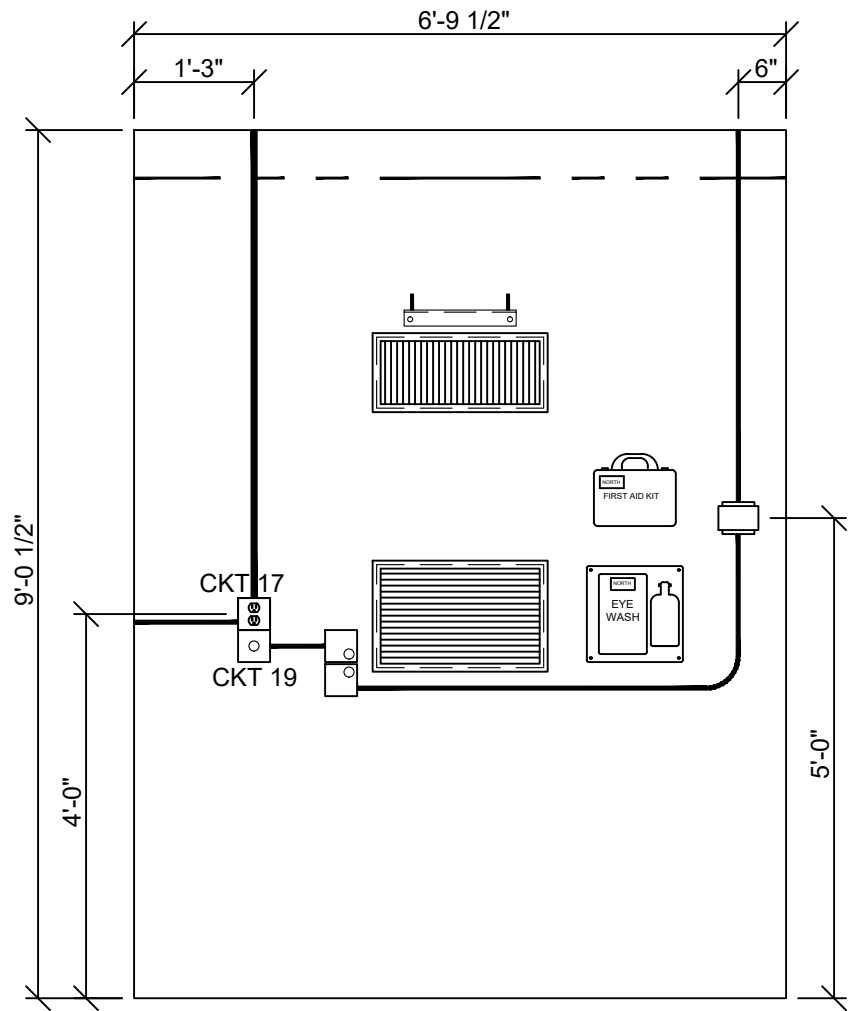
WALL A & B INTERIOR LAYOUTS

DRAWING NUMBER:

TBB1659

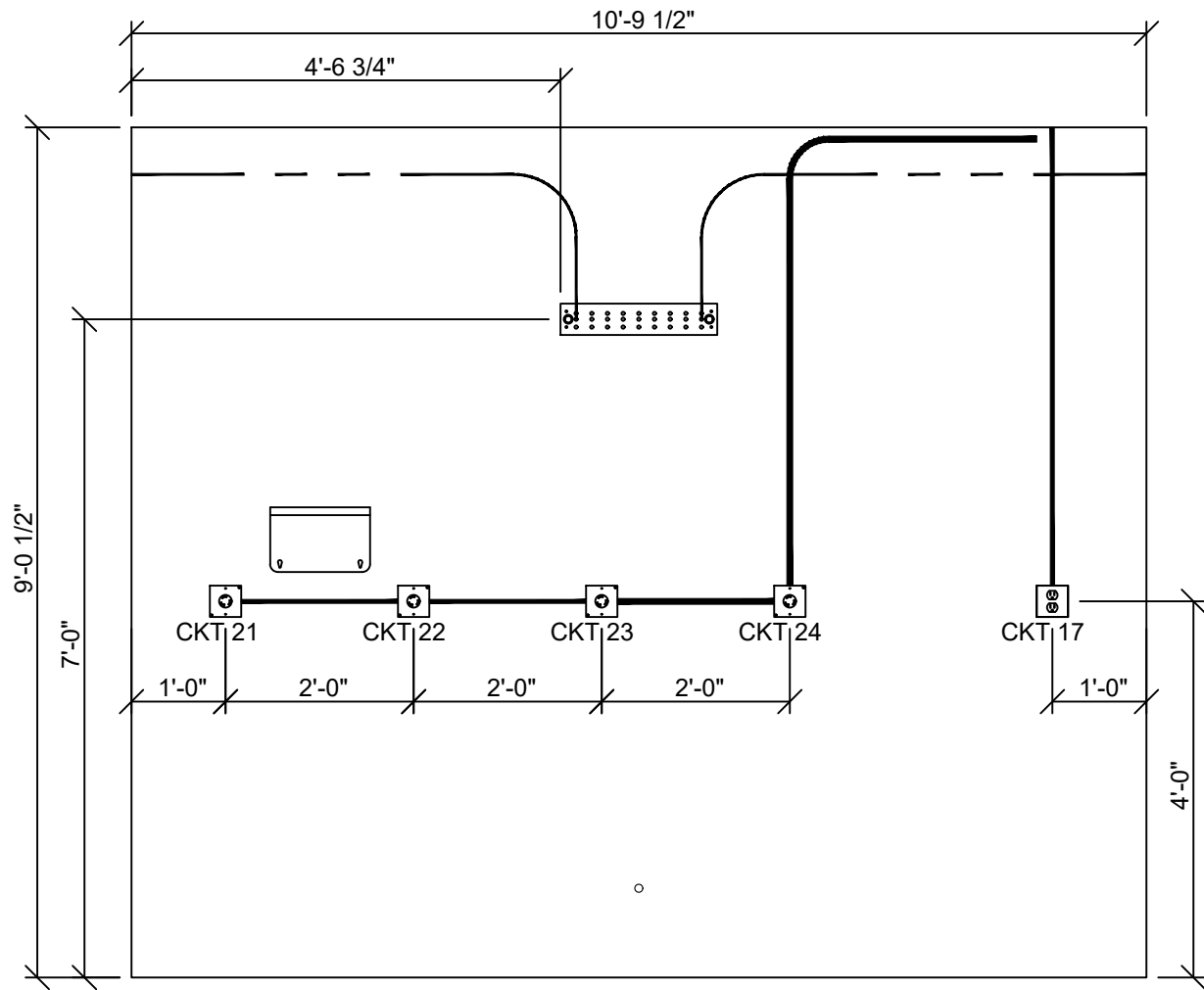
SHEET NUMBER:

A1.2



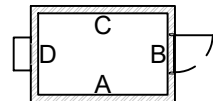
WALL D

SCALE: 1/2" = 1'-0"



WALL C

SCALE: 1/2" = 1'-0"



ALL CONDUIT IS APPROXIMATE AND MAY NOT REFLECT ACTUAL RUNS.

CUSTOMER APPROVAL

- ☐ APPROVED
- ☐ APPROVED EXCEPT AS NOTED
- ☐ REVISE AS NOTED AND RESUBMIT
- ☐ SEE LETTER OF TRANSMITTAL

APPROVED BY _____
DATE _____

THIS PRINT MUST BE SIGNED, DATED, AND
RETURNED TO YOUR SALES REPRESENTATIVE
AT THERMOBOND

NOTE: ALL PAGES MUST BE SIGNED



THIS DOCUMENT AND ALL
INFORMATION CONTAINED HEREIN
ARE THE PROPRIETARY DATA AND
TRADE SECRETS OF THERMOBOND.
THIS DOCUMENT AND THE
INFORMATION CONTAINED HEREIN
MAY NOT BE REPRODUCED, USED
OR DISCLOSED IN ANY MANNER OR
TO ANY EXTENT (EXCEPT BY OR TO
THERMOBOND) WITHOUT THE
PRIOR WRITTEN AUTHORIZATION
OF THERMOBOND.

PROJECT SERIAL NUMBER:

2208-309

SHELTER SIZE:

8'-0"W OD X 12'-0" OD X 9'H ID

PROJECT NAME:

AXIOM TECHNOLOGIES

SITE NAME:

LEEDS, ME

DRAWN:

4/14/23

REVISION #:

-

DRAWN BY:

JWW

REVISED:

-

SHEET NAME:

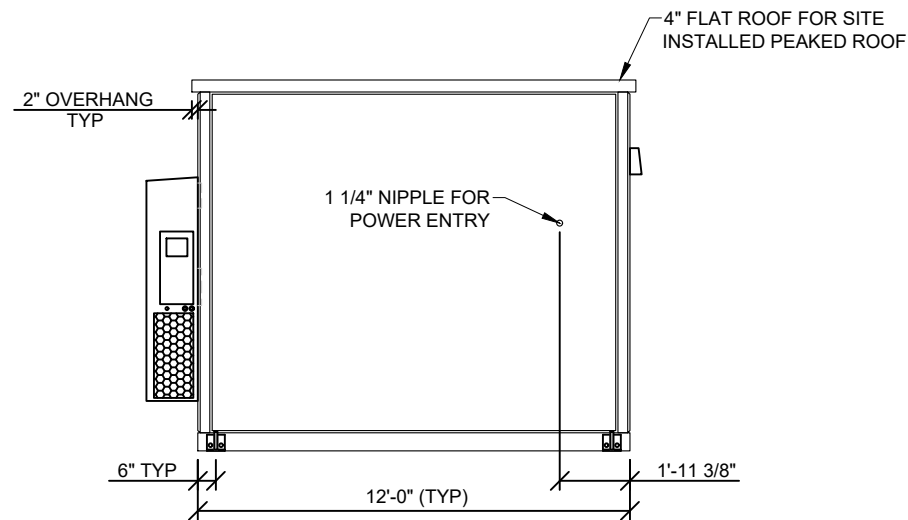
WALL C & D INTERIOR LAYOUTS

DRAWING NUMBER:

TBB1659

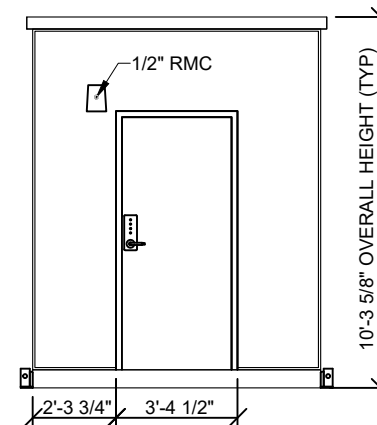
SHEET NUMBER:

A1.3



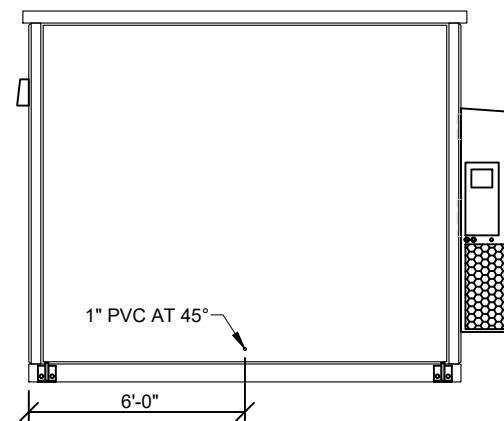
FRONT ELEVATION (WALL A)

SCALE: NONE



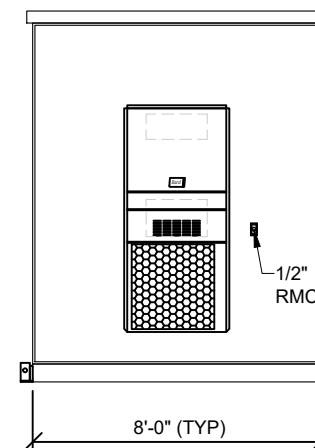
RIGHT ELEVATION (WALL B)

SCALE: NONE



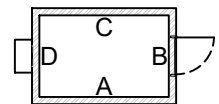
REAR ELEVATION (WALL C)

SCALE: NONE



LEFT ELEVATION (WALL D)

SCALE: NONE



CUSTOMER APPROVAL

- ☐ APPROVED
☐ APPROVED EXCEPT AS NOTED
☐ REVISE AS NOTED AND RESUBMIT
☐ SEE LETTER OF TRANSMITTAL

APPROVED BY _____
DATE _____

THIS PRINT MUST BE SIGNED, DATED, AND
RETURNED TO YOUR SALES REPRESENTATIVE
AT THERMOBOND

NOTE: ALL PAGES MUST BE SIGNED

PROJECT SERIAL NUMBER:

2208-309

SHELTER SIZE:

8'-0"W OD X 12'-0" OD X 9'H ID

PROJECT NAME:

AXIOM TECHNOLOGIES

SITE NAME:

LEEDS, ME

DRAWN:

4/14/23

REVISION #:

-

DRAWN BY:

JWW

REVISED:

-

SHEET NAME:

EXTERIOR ELEVATIONS

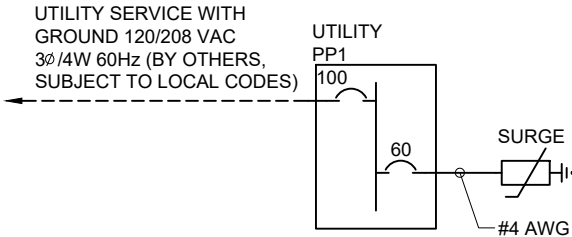
DRAWING NUMBER:

TBB1659

SHEET NUMBER:

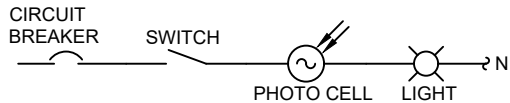
A2.0

PP1 100A, 120/208VAC, 3ϕ/4W, 60HZ, M.BKR																				
LOAD	VOLT AMPS			WIRE			BREAKER			WIRE			VOLT AMPS			LOAD				
	A	B	C		P	TRIP			TRIP	P		A	B	C						
BACK FED MAIN					3	3	100	1				2				POWER FAIL				
								3				4	20	3	12			120		
								5				6						120		120
HVAC	2600				10	2	30	7				8	30	2	10		180			TWISTLOCK #5
		2600						9				10					180			
INTERIOR LIGHTS *				128	12	1	20	11				12							180	TWISTLOCK #5
EXTERIOR LIGHT *	15				12	1	20	13				14	30	2	10		180			
SMOKE DETECTOR		120			12	1	20	15				16	30	2	10		180			TWISTLOCK #5
RECEPTACLES				720	12	1	20	17				18							180	
RECEPTACLE GFCI	180				12	1	20	19				20					180			TWISTLOCK #5
TWISTLOCK #1		180			12	1	20	21				22	30	2	10		180			
TWISTLOCK #2				180	12	1	20	23				24								BLANK
TWISTLOCK #3	180				12	1	20	25				26					10			
TWISTLOCK #4		180			12	1	20	27				28	60	3	4		10			SURGE ARRESTOR
BLANK								29				30							10	
VA PER PHASE	2975	3080	1028											670	670	490	VA PER PHASE			
													3645	3750	1518	TOTAL VA PER PHASE				
													30	31	13	AMPS PER PHASE				
															8.9	TOTAL KVA				
															31	MAX AMPS PER PHASE				



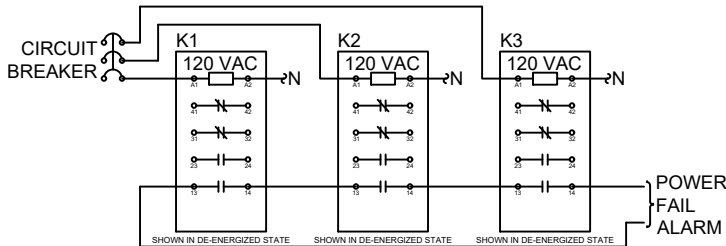
ONE-LINE WIRING DIAGRAM

SCALE: NONE



EXTERIOR LIGHT CIRCUIT

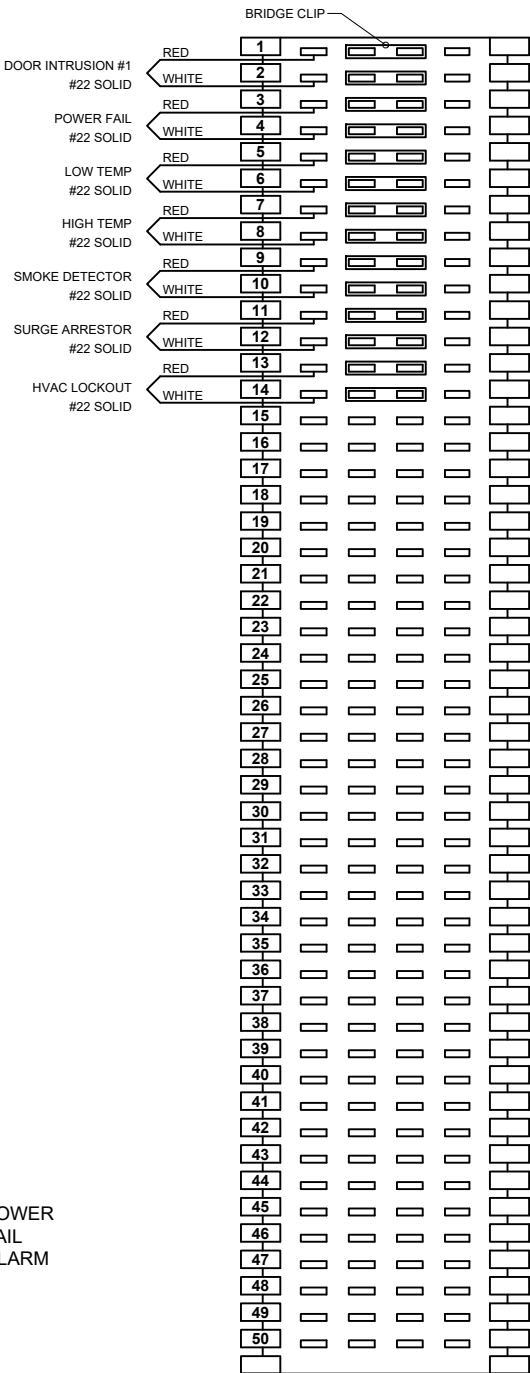
SCALE: NONE



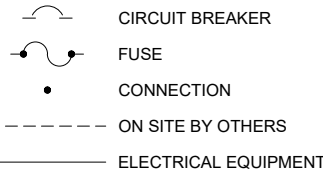
POWER FAIL DIAGRAM

SCALE: NONE

ALARM BLOCK



SCHEMATIC LEGEND



ALARM NOTES:

- ALL ALARMS TO BE NORMALLY OPEN.
- BRIDGE CLIPS TO BE INSTALLED ON ALL TERMINATED ALARMS.
- WIRE TO BE #22 AWG SOLID

CUSTOMER APPROVAL

- ☐ APPROVED
- ☐ APPROVED EXCEPT AS NOTED
- ☐ REVISE AS NOTED AND RESUBMIT
- ☐ SEE LETTER OF TRANSMITTAL

APPROVED BY _____

DATE _____

THIS PRINT MUST BE SIGNED, DATED, AND RETURNED TO YOUR SALES REPRESENTATIVE AT THERMOBOND

NOTE: ALL PAGES MUST BE SIGNED

PROJECT SERIAL NUMBER:

2208-309

SHELTER SIZE:

8'-0"W OD X 12'-0" OD X 9'H ID

PROJECT NAME:

AXIOM TECHNOLOGIES

SITE NAME:

LEEDS, ME

DRAWN:

4/14/23

REVISION #:

-

DRAWN BY:

JWW

REVISED:

-

SHEET NAME:

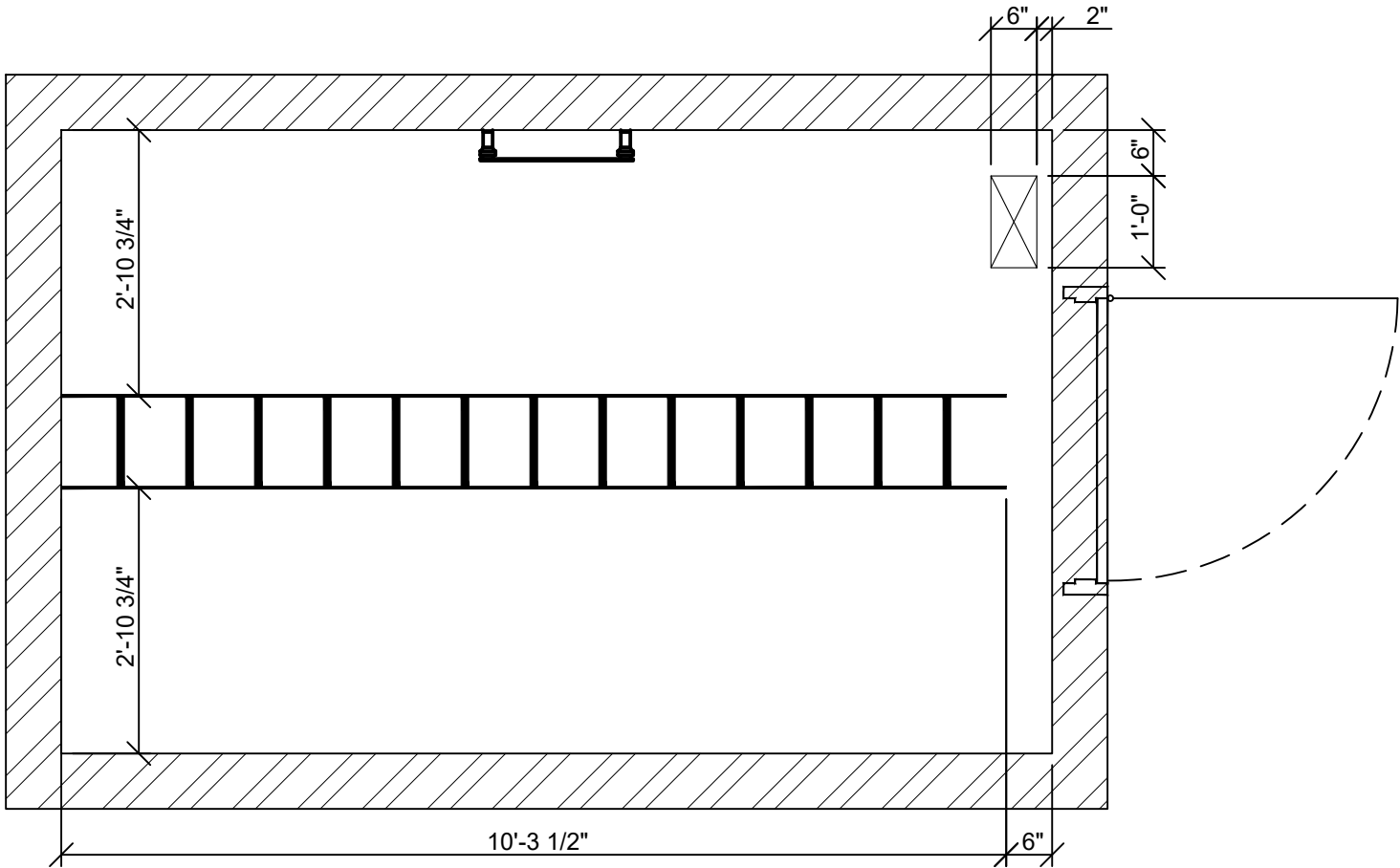
ELECTRICAL SCHEMATIC

DRAWING NUMBER:

TBB1659

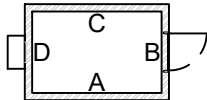
SHEET NUMBER:

E1.0



CABLE LADDER PLAN

SCALE: 1/2" = 1'-0"



CUSTOMER APPROVAL

- ☐ APPROVED
- ☐ APPROVED EXCEPT AS NOTED
- ☐ REVISE AS NOTED AND RESUBMIT
- ☐ SEE LETTER OF TRANSMITTAL

APPROVED BY _____
DATE _____

THIS PRINT MUST BE SIGNED, DATED, AND
RETURNED TO YOUR SALES REPRESENTATIVE
AT THERMOBOND

NOTE: ALL PAGES MUST BE SIGNED

THERMO BOND
BUILDINGS



1001 W. Main St.
Elk Point, SD 57025
605-356-2090

58120 County Road 3
Elkhart, IN 46517
574-295-1214

www.thermobond.com

THIS DOCUMENT AND ALL
INFORMATION CONTAINED HEREIN
ARE THE PROPRIETARY DATA AND
TRADE SECRETS OF THERMOBOND.
THIS DOCUMENT AND THE
INFORMATION CONTAINED HEREIN
MAY NOT BE REPRODUCED, USED
OR DISCLOSED IN ANY MANNER OR
TO ANY EXTENT (EXCEPT BY OR TO
THERMOBOND) WITHOUT THE
PRIOR WRITTEN AUTHORIZATION
OF THERMOBOND.

PROJECT SERIAL NUMBER:
2208-309

SHELTER SIZE:
8'-0"W OD X 12'-0" OD X 9'H ID

PROJECT NAME:
AXIOM TECHNOLOGIES

SITE NAME:
LEEDS, ME

DRAWN:
4/14/23

REVISION #:
-

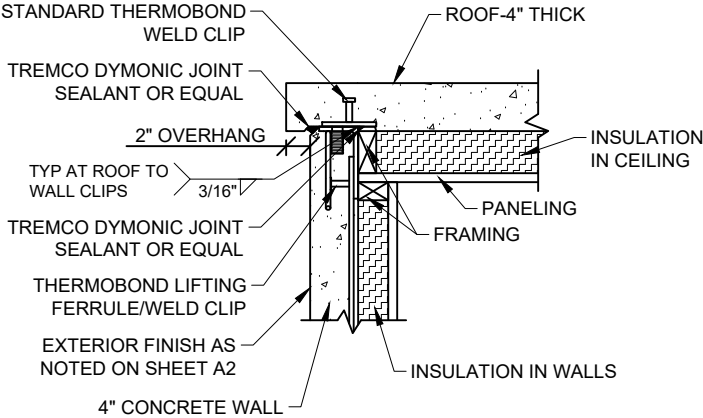
DRAWN BY:
JWW

REVISED:
-

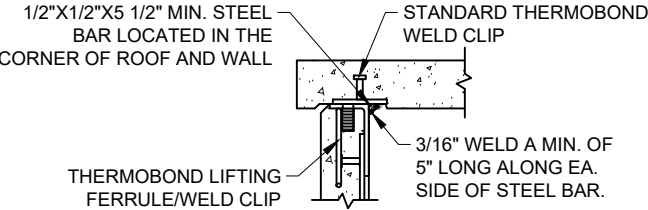
SHEET NAME:
CABLE LADDER PLAN

DRAWING NUMBER:
TBB1659

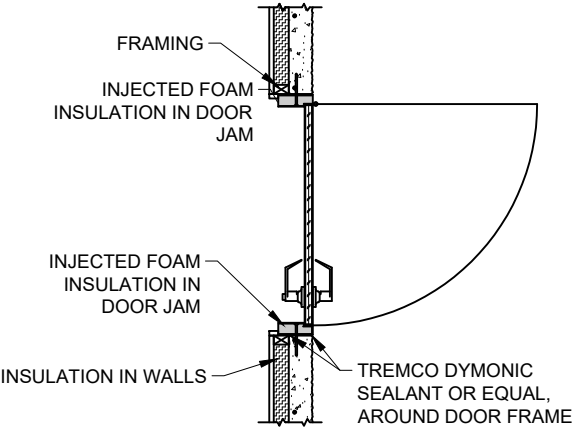
SHEET NUMBER:
E2.0



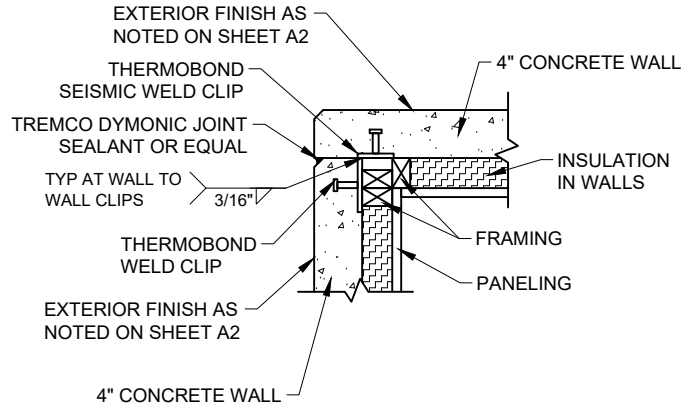
1 ROOF TO WALL SECTION
SCALE: 3/4" = 1'-0"



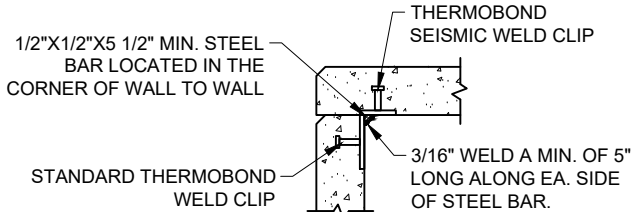
4 ROOF TO WALL WELD
SCALE: 3/4" = 1'-0"



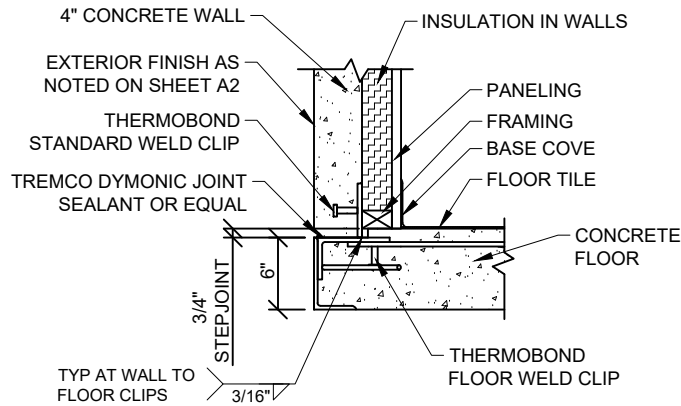
7 TYPICAL DOOR SECTION DETAIL
SCALE: 3/8" = 1'-0"



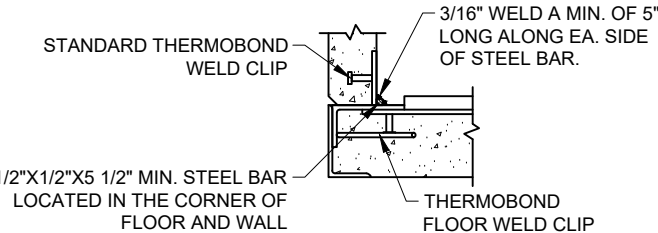
2 WALL TO WALL SECTION
SCALE: 3/4" = 1'-0"



5 WALL TO WALL WELD
SCALE: 3/4" = 1'-0"



3 WALL TO FLOOR SECTION
SCALE: 3/4" = 1'-0"



6 WALL TO FLOOR WELD
SCALE: 3/4" = 1'-0"

CONSTRUCTION MATERIALS:

INTERIOR FINISH:

- FLOOR: 1/8" X 12" X 12" VINYL TILE WITH 4" BASE COVE
- WALLS: 3/4" PANELING (11/16" OSB W/.030 FRP COATING) (CLASS "C" MINIMUM)
- CEILING: 3/4" PANELING (11/16" OSB W/.030 FRP COATING) (CLASS "C" MINIMUM)

INSULATION:

- WALLS: 1 3/4" THERMAX FOAM INSULATION (R-11.4) ESR-1659
- CEILING: 3" THERMAX FOAM INSULATION (R-19) ESR-1659

FRAMING:

- WALLS: 2" X 3" FURRING STRIPS ON END AT 24" O.C.
- CEILING: 2" X 4" FURRING STRIPS ON END AT 24" O.C.

CONCRETE:

- FLOOR: 5000PSI LIGHTWEIGHT
- WALLS: 5000PSI LIGHTWEIGHT
- CEILING: 5000PSI LIGHTWEIGHT

CONSTRUCTION NOTES:

- FLOORS ARE TO BE WAXED AND SEALED BEFORE SHIPPING.

CUSTOMER APPROVAL

- ☐ APPROVED
☐ APPROVED EXCEPT AS NOTED
☐ REVISE AS NOTED AND RESUBMIT
☐ SEE LETTER OF TRANSMITTAL

APPROVED BY _____
DATE _____

THIS PRINT MUST BE SIGNED, DATED, AND
RETURNED TO YOUR SALES REPRESENTATIVE
AT THERMOBOND

NOTE: ALL PAGES MUST BE SIGNED

PROJECT SERIAL NUMBER:

2208-309

SHELTER SIZE:

8'-0"W OD X 12'-0" OD X 9'H ID

PROJECT NAME:

AXIOM TECHNOLOGIES

SITE NAME:

LEEDS, ME

DRAWN:

4/14/23

REVISION #:

-

DRAWN BY:

JWW

REVISED:

-

SHEET NAME:

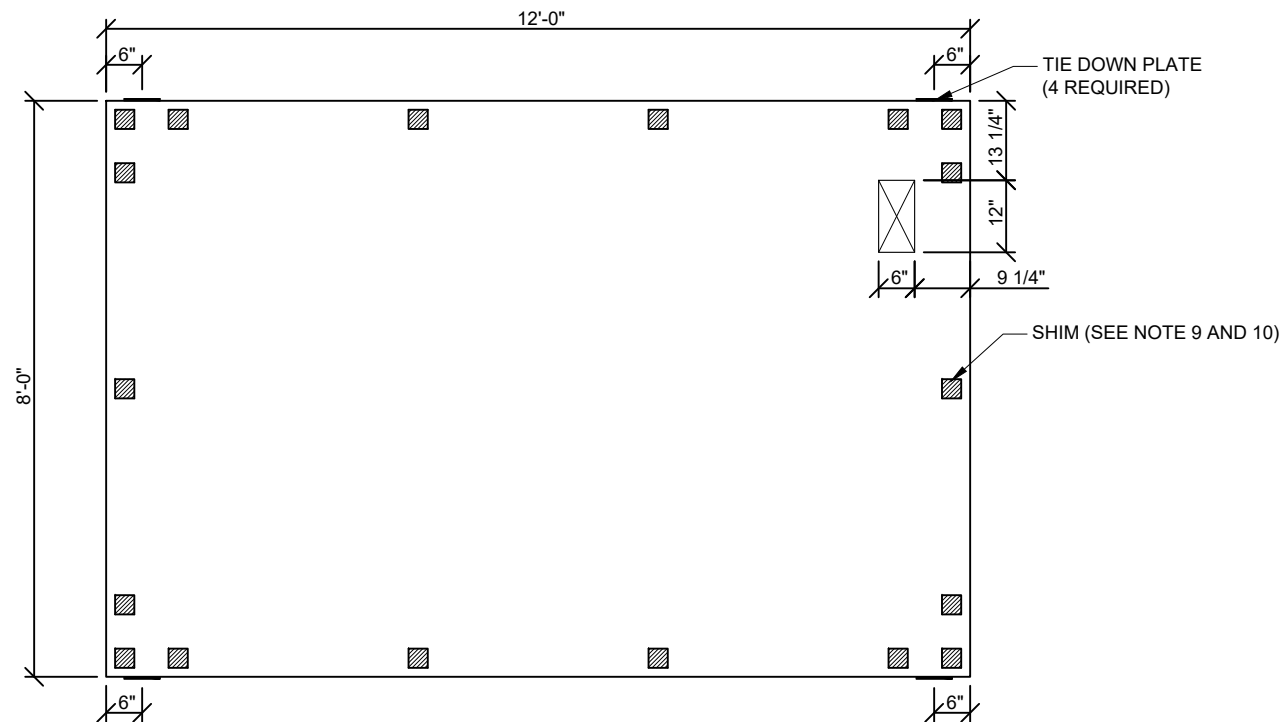
CONSTRUCTION DETAILS

DRAWING NUMBER:

TBB1659

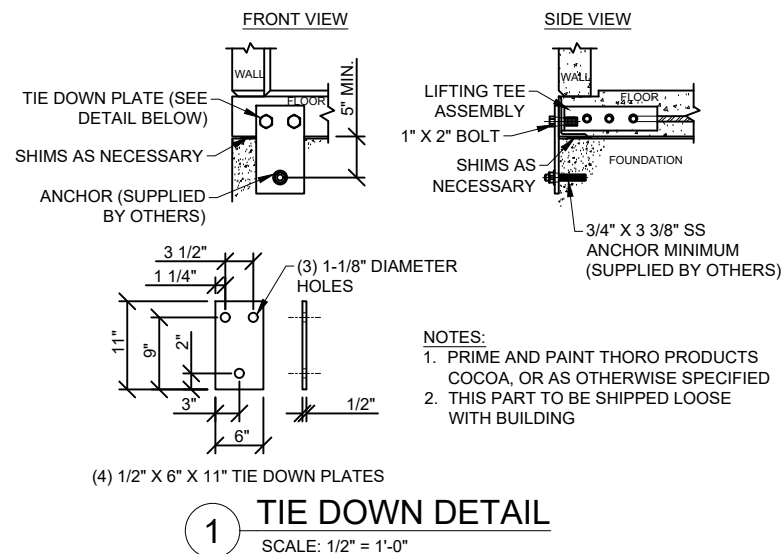
SHEET NUMBER:

S1.0



FOUNDATION PLAN
SCALE: 3/8"=1'-0"

NOT FOR CONSTRUCTION.
FOUNDATION DESIGN MUST BE
COMPLETED BY A LICENSED
PROFESSIONAL.



FOUNDATION NOTES:

1. CONTRACTOR IS RESPONSIBLE FOR ENSURING COMPLIANCE WITH ANY LOCAL, STATE, OR FEDERAL REGULATIONS.
2. FOUNDATION MUST SUPPORT THE FULL WEIGHT OF THE SHELTER.
3. UNLESS OTHERWISE NOTED, THE SHELTER MUST BE SUPPORTED AT ALL LIFTING LOCATIONS (MINIMUM). ADDITIONAL SUPPORT MAY BE REQUIRED PER PLAN.
4. SHELTER IS DESIGNED FOR A SLAB FOUNDATION FOR NON-STRUCTURAL REASONS. IF A DIFFERENT DESIGN IS REQUESTED, CONTACT THERMOBOND FOR APPROVAL.
5. ANCHOR LOCATION AND QUANTITY ARE REQUIRED PER PLAN. IF A DIFFERENT LOCATION OR QUANTITY IS REQUESTED, CONTACT THERMOBOND FOR APPROVAL.
6. SHELTER ANCHORING DEVICES MUST BE ENTIRELY ABOVE GRADE.
7. FOUNDATION MUST BE SQUARE TO WITHIN +/- 1/4".
8. FOUNDATION SUPPORT LOCATIONS MUST BE LEVEL OR SHIMMED TO +/- 1/8" AND FOUNDATION MAY NOT BE CROWNED BETWEEN SUPPORT LOCATIONS.
9. SHIM HARNESS DUROMETER 60 OR COMPRESSIVE STRENGTH OF 9000 PSI (MINIMUM)
10. SHIMS MUST BE 3" SQUARE (MINIMUM).
11. TIE DOWN HARDWARE ATTACHED TO SHELTER MUST BE TORQUED TO 145 +/- 5 FT-LB.
12. FOUNDATION FOOTPRINT PER PLAN +/- 1" EACH DIRECTION UNLESS OTHERWISE NOTED.

CUSTOMER APPROVAL

- ☐ APPROVED
☐ APPROVED EXCEPT AS NOTED
☐ REVISE AS NOTED AND RESUBMIT
☐ SEE LETTER OF TRANSMITTAL

APPROVED BY _____
DATE _____

THIS PRINT MUST BE SIGNED, DATED, AND
RETURNED TO YOUR SALES REPRESENTATIVE
AT THERMOBOND

NOTE: ALL PAGES MUST BE SIGNED

PROJECT SERIAL NUMBER:

2208-309

SHELTER SIZE:

8'-0"W OD X 12'-0" OD X 9'H ID

PROJECT NAME:

AXIOM TECHNOLOGIES

SITE NAME:

LEEDS, ME

DRAWN:

4/14/23

REVISION #:

-

DRAWN BY:

JWW

REVISED:

-

SHEET NAME:

FOUNDATION

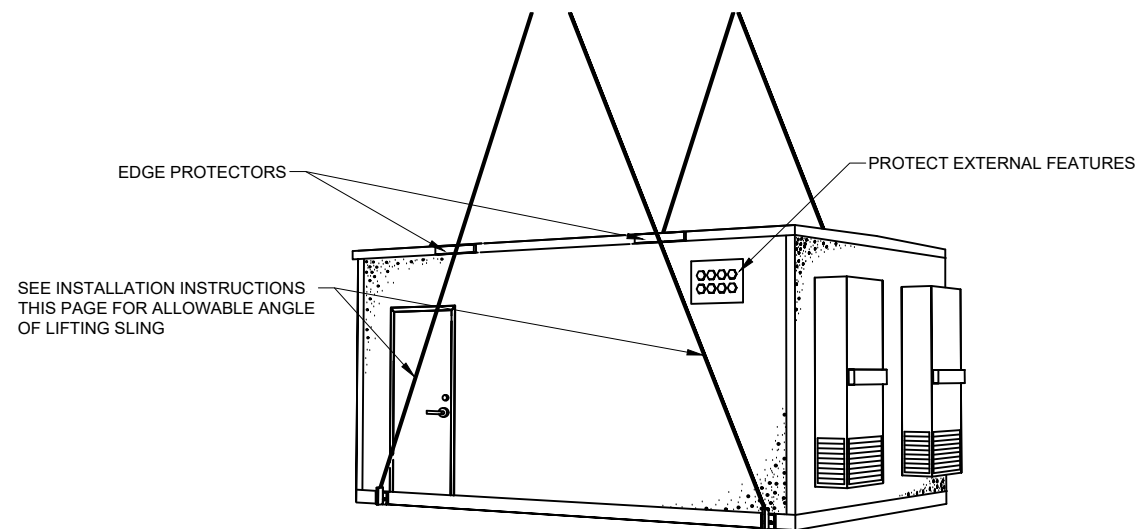
DRAWING NUMBER:

TBB1659

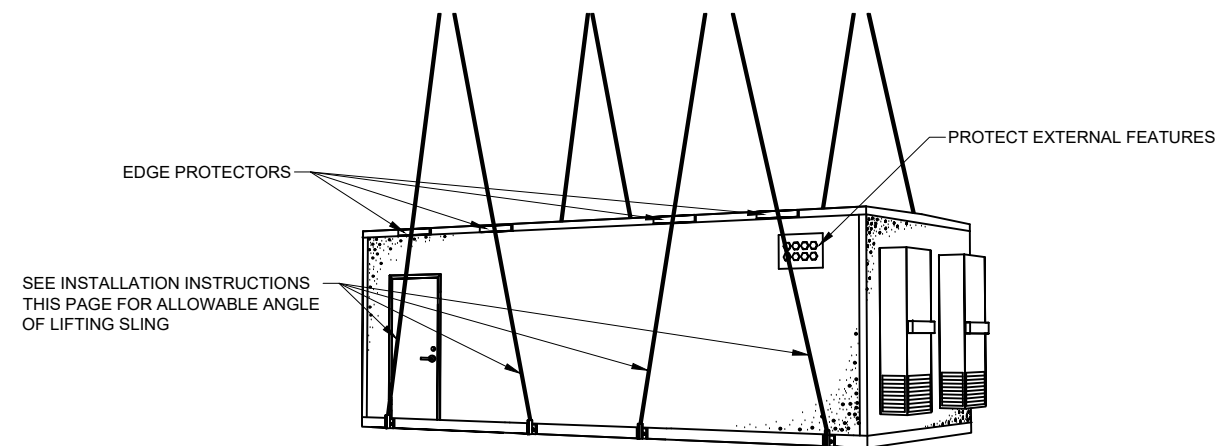
SHEET NUMBER:

T1.0

LIFTING POINT DEVICES WILL BE PROVIDED AS NOTED BELOW. ALL OTHER RIGGING EQUIPMENT AND PLAN IS THE RESPONSIBILITY OF THE RIGGING CONTRACTOR.



1 4 POINT BUILDING LIFT
SCALE: NONE

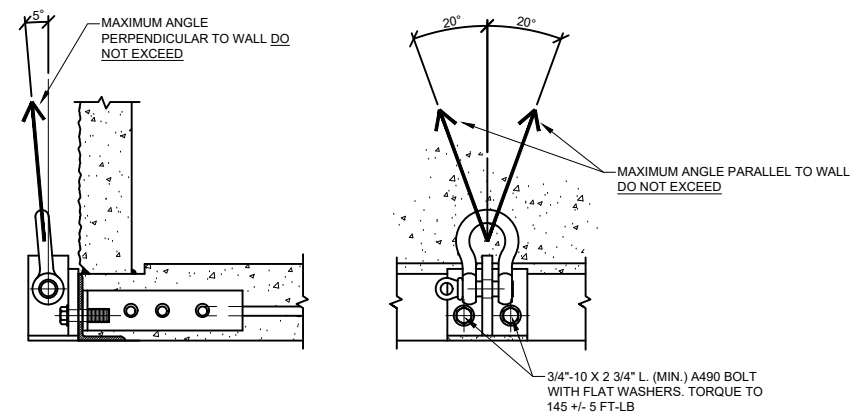


2 8 POINT BUILDING LIFT
SCALE: NONE

1. THESE LIFTING INSTRUCTIONS ARE NOT ENGINEERED BY THERMO BOND BUILDINGS, ANY LIFTING ENGINEERING THAT NEEDS TO BE DONE TO LIFT THE SHELTER IS THE RESPONSIBILITY OF THE CUSTOMER AND/OR RIGGING COMPANY.
2. AN UNBALANCED LOAD SHOULD BE ANTICIPATED, TAKE ALL NECESSARY PRECAUTIONS TO BALANCE THE LOAD PRIOR TO LIFTING THE SHELTER.

RIGGING NOTES:

1. THE SHELTER MUST BE LIFTED ONLY AT THE INDICATED LIFTING POINTS.
2. THE SHELTER MUST BE LIFTED USING ALL INDICATED LIFTING POINTS.
3. THE SHELTER MUST BE LEVEL WHEN LIFTING.
4. ANY TEMPORARY STRUCTURE MUST REMAIN IN PLACE DURING THE LIFTING PROCESS.
5. NO ADDITIONAL ON-SITE EQUIPMENT MAY BE ADDED TO THE SHELTER PRIOR TO LIFTING.
6. THERMO BOND LIFTING POINT DEVICES MUST BE USED FOR LIFTING. IF OTHER LIFTING DEVICES ARE REQUESTED, CONTACT THERMO BOND FOR APPROVAL.
7. MODIFICATION OF LIFTING POINT DEVICES IS NOT PERMITTED.
8. INSPECT LIFTING POINT DEVICES FOR DAMAGE PRIOR TO LIFTING. DO NOT USE DEVICES WITH DAMAGE AND CONTACT THERMO BOND FOR REPLACEMENT.
9. ROUTE RIGGING AWAY FROM ROOF LINE OR PROTECT FROM DAMAGE PRIOR TO LIFTING.
10. ROUTE RIGGING AWAY FROM EXTERNAL EQUIPMENT AND PROTRUSIONS OR PROTECT FROM DAMAGE PRIOR TO LIFTING.
11. DO NOT PLACE THE SHELTER ON UNEVEN OR UNSTABLE SURFACES.
12. RIGGING CONTRACTOR IS RESPONSIBLE FOR ENSURING SAFETY AND QUALITY REQUIREMENTS ARE MET.
13. RIGGING CONTRACTOR IS RESPONSIBLE FOR ENSURING COMPLIANCE WITH ANY LOCAL, STATE, OR FEDERAL REGULATIONS.
14. INSPECT SHELTER AND EQUIPMENT FOR DAMAGE AFTER PLACEMENT.



3 END INSTALLATION AND SLING LIMITS
SCALE: NONE

CUSTOMER APPROVAL

- ☐ APPROVED
- ☐ APPROVED EXCEPT AS NOTED
- ☐ REVISE AS NOTED AND RESUBMIT
- ☐ SEE LETTER OF TRANSMITTAL

APPROVED BY _____
DATE _____

THIS PRINT MUST BE SIGNED, DATED, AND RETURNED TO YOUR SALES REPRESENTATIVE AT THERMOBOND

NOTE: ALL PAGES MUST BE SIGNED

PROJECT SERIAL NUMBER:

2208-309

SHELTER SIZE:

8'-0"W OD X 12'-0" OD X 9'H ID

PROJECT NAME:

AXIOM TECHNOLOGIES

SITE NAME:

LEEDS, ME

DRAWN:

4/14/23

REVISION #:

-

DRAWN BY:

JWW

REVISED:

-

SHEET NAME:

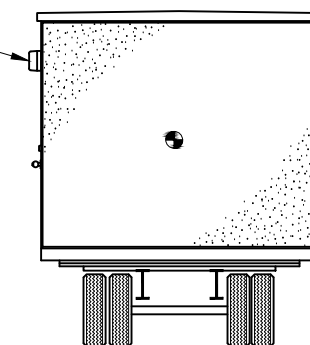
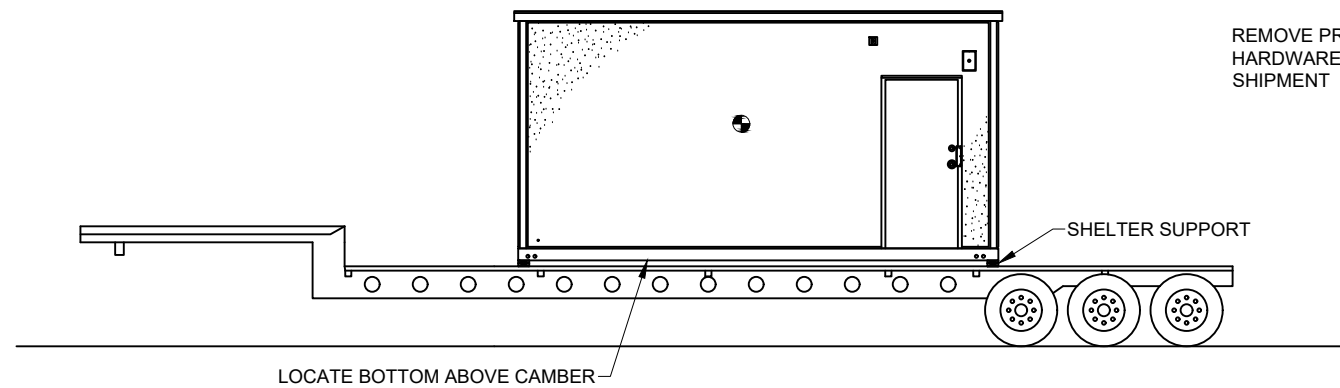
RIGGING NOTES

DRAWING NUMBER:

TBB1659

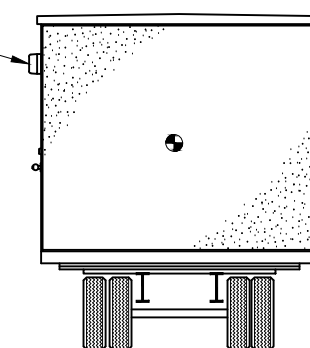
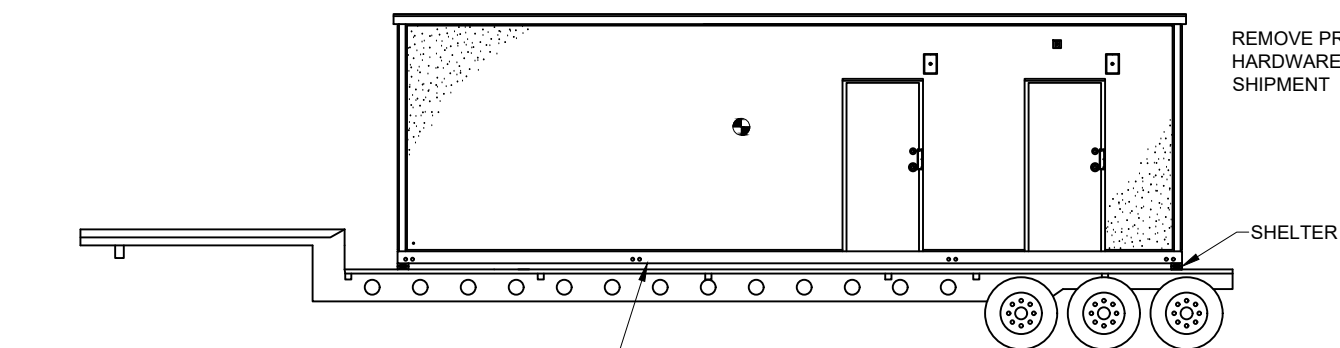
SHEET NUMBER:

T2.0



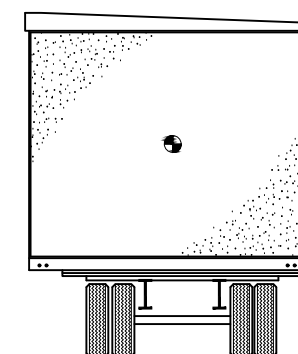
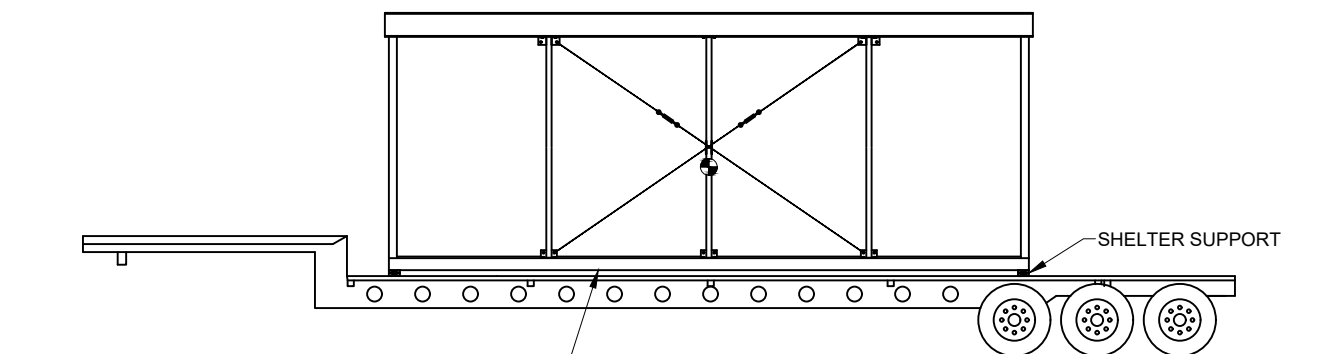
UP TO 20 FT LONG SHELTER

CENTER OF GRAVITY



OVER 20 FT LONG SHELTER

CENTER OF GRAVITY



OPEN SIDED MODULAR SHELTER

CENTER OF GRAVITY

TRANSPORT NOTES:

1. CARTAGE COMPANY IS TO EXECUTE TIE DOWN, DETERMINE ADEQUACY OF TIE DOWN AND IS RESPONSIBLE FOR LOCATING SHELTER C.G. FOR EQUIPMENT REQUIREMENTS AND DOT COMPLIANCE.
2. REMOVE AND SHIP LOOSE ALL FIXTURES PROTRUDING OVER WIDTH LIKELY TO BE DAMAGED.
3. COVER OPENINGS WATERTIGHT.
4. PROVIDE DRIVER WITH SET OF LIFTING DRAWINGS AND INSTRUCTIONS TO DELIVER LIFTING DRAWING WITH SHELTER AT SITE OFF-LOAD.
5. INSPECT SHELTER FOR DAMAGE BEFORE RELEASING DRIVER.

DUNNAGE AND TIE DOWN NOTES:

1. BLOCK SHELTER ONLY AT THE ENDS, UNDER THE END WALLS.
2. BLOCK SHELTER ABOVE HIGHEST POINT OF TRAILER CAMBER BY AT LEAST 1 1/2".

CUSTOMER APPROVAL

- ☐ APPROVED
☐ APPROVED EXCEPT AS NOTED
☐ REVISE AS NOTED AND RESUBMIT
☐ SEE LETTER OF TRANSMITTAL

APPROVED BY _____
DATE _____

THIS PRINT MUST BE SIGNED, DATED, AND
RETURNED TO YOUR SALES REPRESENTATIVE
AT THERMOBOND

NOTE: ALL PAGES MUST BE SIGNED

PROJECT SERIAL NUMBER:

2208-309

SHELTER SIZE:

8'-0"W OD X 12'-0" OD X 9'H ID

PROJECT NAME:

AXIOM TECHNOLOGIES

SITE NAME:

LEEDS, ME

DRAWN:

4/14/23

REVISION #:

-

DRAWN BY:

JWW

REVISED:

-

SHEET NAME:

TRANSPORT NOTES

DRAWING NUMBER:

TBB1659

SHEET NUMBER:

T3.0