

	General Notes
1	These maps are taken from the National Geographic database in 1977. They will not have all of the trails marked as many new trails have appeared. The sketched-in routes are approximate and assume no liability for their accuracy. We do not expect that every inch of stream will be counted. Use personal responsibility and judgment. NEVER put yourself, your team, nor your family in a situation where you feel uncomfortable
2	<b><u>All</u></b> team members must register! <a href="http://www.watershedguardians.org/beavercount">www.watershedguardians.org/beavercount</a>
3	<b><u>All</u></b> team members must check out when leaving for the watershed and check-in as soon as they completing their count and in no case later than 4:30 PM.
4	Yellow Rectangles indicate possible parking areas. The Newman family has offered to let us use their driveway for parking. Please do not park more than three vehicles here. Also if the driveway is icy, 4WD vehicles only. <b><u>Also use caution when pulling out on to the main highway...visibility is poor.</u></b>
5	Zone XI (West Fork) is scaled differently than other maps. It is a BLUE zone (Moderate to more difficult).
6	Zone XII and XIII are shown in Figure 5.
7	
8	Zone descriptions: <ul style="list-style-type: none"> <li>• Green: These are the easiest routes that we have. Typically the terrain is flatter, less than 3 miles Round Trip: RT and near roads;</li> <li>• Blue: Intermediate. Some brush, steep terrain 3-5 miles RT;</li> <li>• Red; Challenging: Steep terrain, brushy, and possible long distance 5-9 mi. RT;</li> </ul>
9	No warming hut is proposed for the South Fork this year.
10	Some zones are marked with a slash indicating that there are no longer beaver in those areas. We will not be censusing them. However, feel free to contact Idaho Fish and Game Regional Office at 208-234-4703 and ask them, "Why?"

<b>Zone</b>	<b>Difficulty Level</b>	<b>Description</b>	<b>Parking</b>
I	Green	Park at Cherry Springs. Walk/hike/snowshoe along paved trail downstream (north). Investigate creek as far as the paved path. You will have to venture through the brush toward the stream at various points to find activity. Expect ice on the trail and hawthorn spines in brush. Mark your end point. The remaining portion of the zone is best censused from the east side of the creek, along the road. It may be best to split your team into two parties, one for the East side of the Creek, one for the West. If so, be sure that you know where one team starts counting and the other begins.	Cherry Springs Day Use Area
Ia	Green	The lower part of the creek may be best assessed by parking at Kinney Creek trailhead, crossing the highway and walking the road up to Cherry Springs.	Kinney Creek Do not park in the Bus Turnaround.
II	Green	Park at Cherry Springs. Travel paved trail upstream (south). Ice or snow on the trail possible. Possible access upstream of paved trail end on W. side of creek. Teams may want to split to cover East and West sides of the creek and count from Mink Creek Hwy. At the end of the trail, some bushwacking may be required or walk up the road to Newman's. 1-2 cars may park at Newman's. The section below Newman's is difficult and you may skip. Just let us know how far you got and if possible, mark the end of your route with flagging.	Cherry Springs Day Use Area or pullout along Mink Creek Highway if a pullout is plowed/clear
III	Green	This section is best accessed by walking along the Mink Creek Highway. Access on the lower end of this section is rough. Begin at the East Fork Road. Ends at the bridge/open bottom culvert at the Bannock Guard Station. WEAR HIGH VIZ VESTS ON THE ROAD	Bannock Guard Station and hike down or Newman's and hike up.

IV	Green	Begin at the Bannock Guard Station. Travel along the creek. The USFS has horses and equipment and buildings at this site. Do not venture away from the creek into the facility. Be cautious of steep embankments. Continue down road past storage barns and access creek beyond barbwire fence. End at the Mink Creek Group site (Pavilion). You may cross the stream at a suitable location.	Bannock Guard Station and snowshoe upstream OR Park at the Pavilion and snowshoe downstream
V	Blue	Begin at the Valve House Bridge. Follow road across the bridge to the cattle guard. Take a right and follow the fence all the way until it ends near the stream. Continue following the stream until you see the South road (not the highway) to your right, moving upstream. Eventually, a small stream enters the South Fork from the south. This is the stream that comes from Corral Creek and you can confirm it by following it up to the road. If the stream goes under the road, that's it. This is an unmarked trail in most sections. The East bank is steep and without snow, may be slippery. Return by backtracking or walking back on the Mink Creek Highway. If you choose this option, WEAR HIGH VIZ VESTS. Or take two cars with one as a shuttle to the S.Fk. parking lot.	West Fork Parking Lot
VI	Green	Note that the South Fork gate is closed at this time of year. This zone was originally a green (2) zone, then changed to a blue (1) then the round trip is about 3.2 miles of flat travel. The zone starts where Corral Creek enters the South Fork. The creek is near the road, so beaver-active sites can be seen from the road. Binoculars are useful to see details without going to the stream. The zone ends at the SECOND open-bottom culvert where the South fork Crosses under the road. The creek will now be on your left.	S. Fk. Gate Parking Lot.
VII		Begins at the SECOND open bottom culvert crossing the SFk Road about 1.5	
		(Windego) Trail head where the Creep passes under the road through a large, open-bottom culvert. . About 8-9 miles, round trip.	

**SPLIT INTO ZONE VIIA AND VIIB 2021**

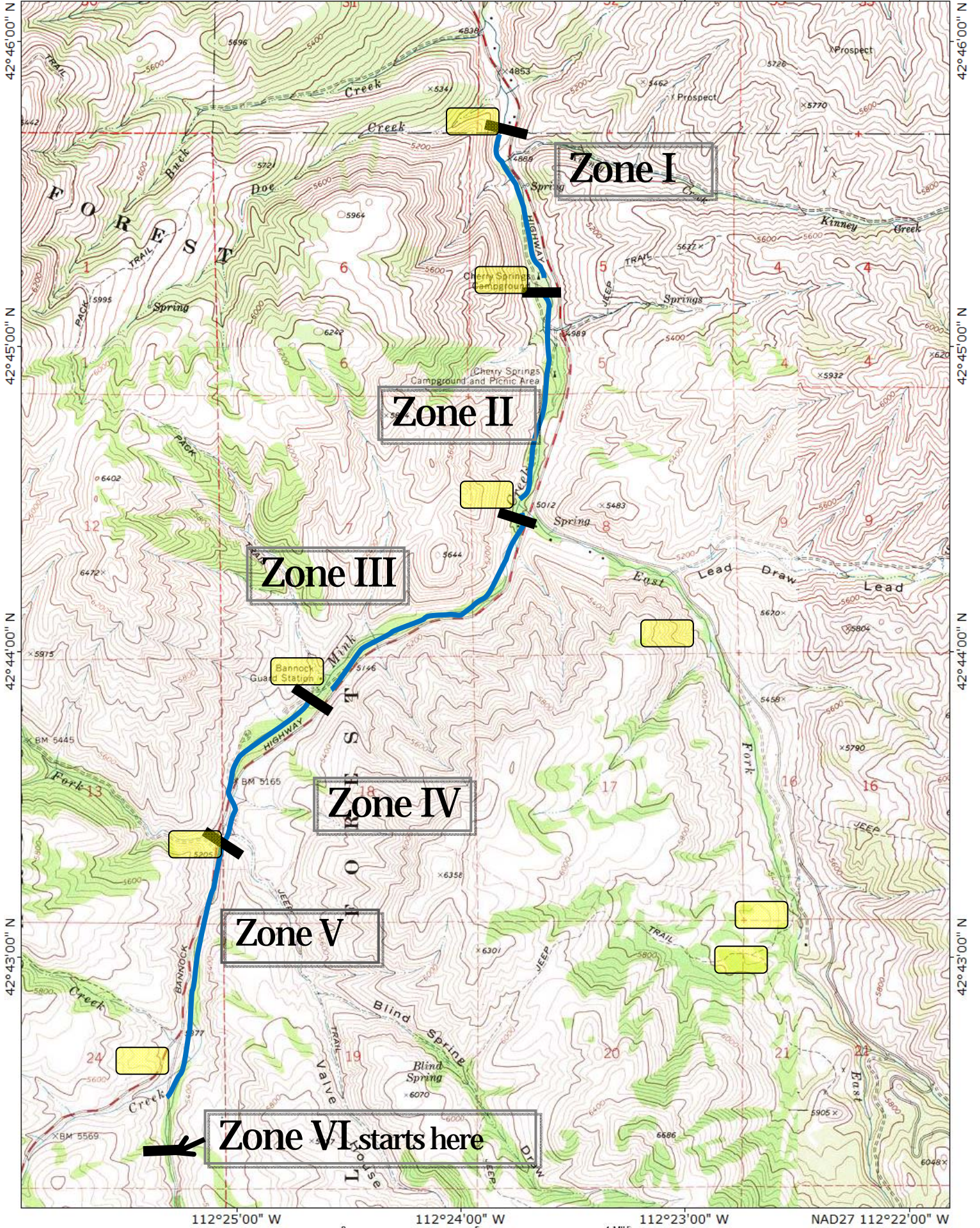
Gate Parking Lot.

VIIA	Blue	Begins at the large culvert/stream crossing the SFk Road about 0.2 miles from the S. Fk parking lot. Pass through the gate. Walk to the bottom of the hill and you will see a stream that comes from the south. This stream is the same that parallels the Mink Creek Highway to the southwest. The point where this stream meets the main South Fork is the beginning of Zone VIIa. Follow this zone as the stream roughly follows the SF road. The zone ends where Corral Spring Creek joins the South Fork Mink. You will see a large culvert passing under the road discharging clear water from a height of about 7 feet into the South Fork.	S. Fk. Gate Parking Lot.
VIIB	Blue	Travel along the South Fork road until you find the Corral Springs discharge pipe. That is the start of VIIB. Continue on up through the canyon onto the flats, past another, un-related corral. Along the stream up to the point where the stream passes under the road from West to East, near the Windego Trail head.	S. Fk. Gate Parking Lot.
VIII		<p>This is a stream on the East side of the MinkCreek highway, parallels the road.</p> <p>Park at the South Fork Gate parking lot.</p> <p>Hike down the south fork road until you see a small stream crossing under the road at the bottom of the hill, about 1 mile. In deep snow, this is a grueling snowshoe. This was last censused in about 2013 and there was a few inactive dams there.</p>	S. Fk. Gate Parking Lot.
IX	Red	SF Mink: Ski about 4 miles from the SF parking lot. Begin at the Box Canyon trailhead (sometimes called Windego) and snowshoe or ski east up the single track trail about a mile, until you notice a small drainage to the southeast. Travel up this drainage about ¼ mile. Ponds are typically on the right side. Difficulty rating for distance travelled; About 8-10 miles, round trip	S. Fk. Gate Parking Lot.

X	Red	SF Mink: Ski about 4 miles up from the SF parking lot. This is a longest distance and includes all of the <b>South Fork</b> along the road, beginning at the Box Canyon (Windego) trailhead. This area is one that we are most interested in. Only those in excellent physical shape should attempt this. Suitable for XC skiing. Be sure to mark the end of the survey.	S. Fk. Gate Parking Lot.
XI	Red	<b>West Fork</b> of Mink Creek. This parking lot is typically busy. This is a long strenuous hike. Best done in snowshoes and start early.	Park at the West Fork of Mink Creek Trailhead.
XII	Green	Lower portion of <b>East Fork</b> of Mink Creek between the large willows and the cattle guard and the bottom of the East Fork Road. If there is snow, participants are asked to keep off the groomed XC trails.	Park either at the lower ski area gate or a pullout between the cattle guard and the lower gate
XIII	Blue	East Fork Mink: Begin at the culvert where the East Fork Crosses the road. Cross the fence near the gate. Follow the road. Continue past the stock pens and upstream. Not all of the lower section of this zone may be accessible due to multiple layers of barbed wire.	Upper XC area gate near at the bottom of the Nordic Center driveway
XXA	Green	Jackson Creek: Follow the creek up to the Boxcar. This is best approached by following the creek upstream East Side of the Creek.	Get permission from Charlotte Vaughn just off Bonneville Road. Park at the pulloff due south of where Jackson Creek flows under Bonneville Road.
XXB	Blue	Jackson Creek: From the Red Union Pacific boxcar, follow the creek towards the NW or to the left facing upstream. The stream will eventually bend out east. Continue up to the USFS Boundary. There should be a sign and a fence at the boundary. This is a long hike, depending up on snow conditions.	Park as with zone XXXA
XXIII	Green	This zone crosses multiple private property areas. Therefore, please ensure that permission is obtained. The creek can be counted from the upper end or the lower end. There are fences, barbed wire and abundant wildlife, including mountain lions.	There is much private property on this survey reach. All landowners should be consulted prior to counting.

--	--	--	--







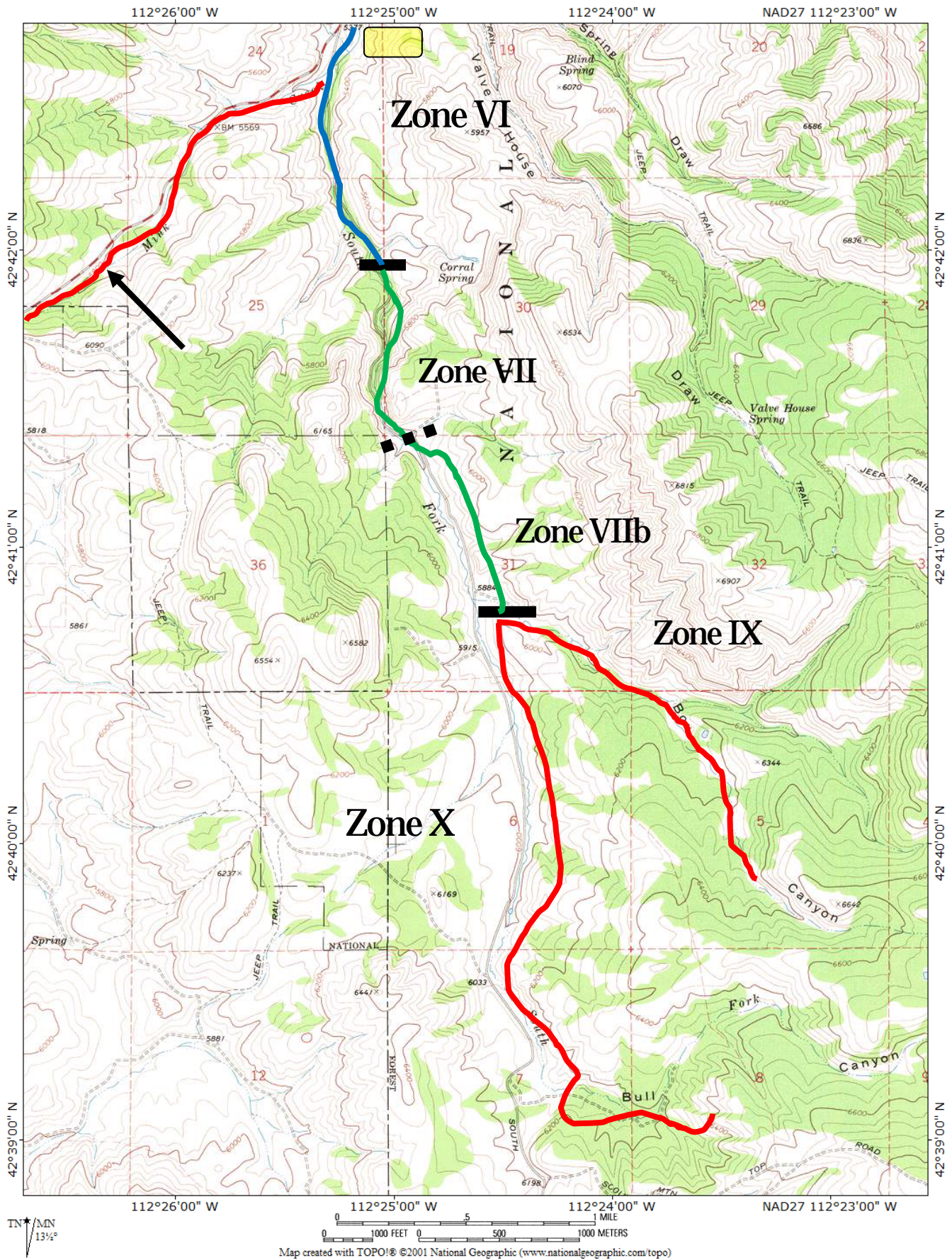


Figure 2



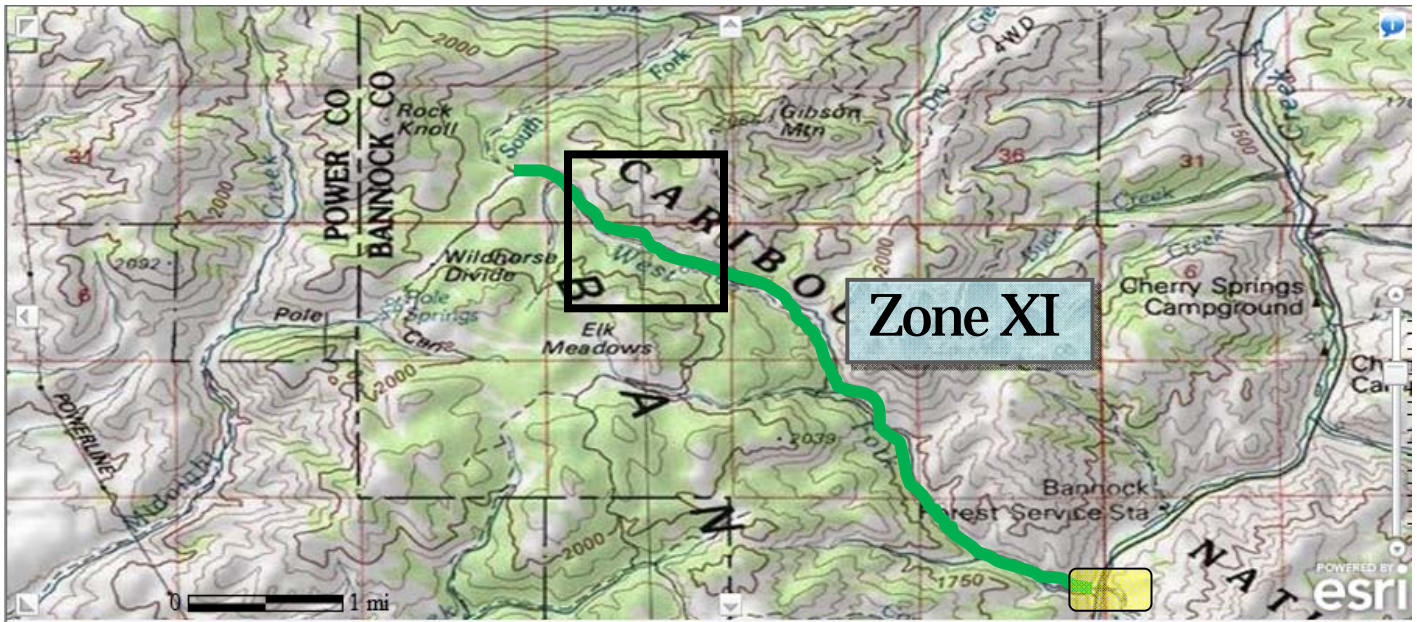


Figure 3

The map below is a blow up the upper portion of the Zone X. Note all of the little blue circles along the ponds. These were no doubt beaver ponds. You will have to reach the top of the drainage to reach these ponds.

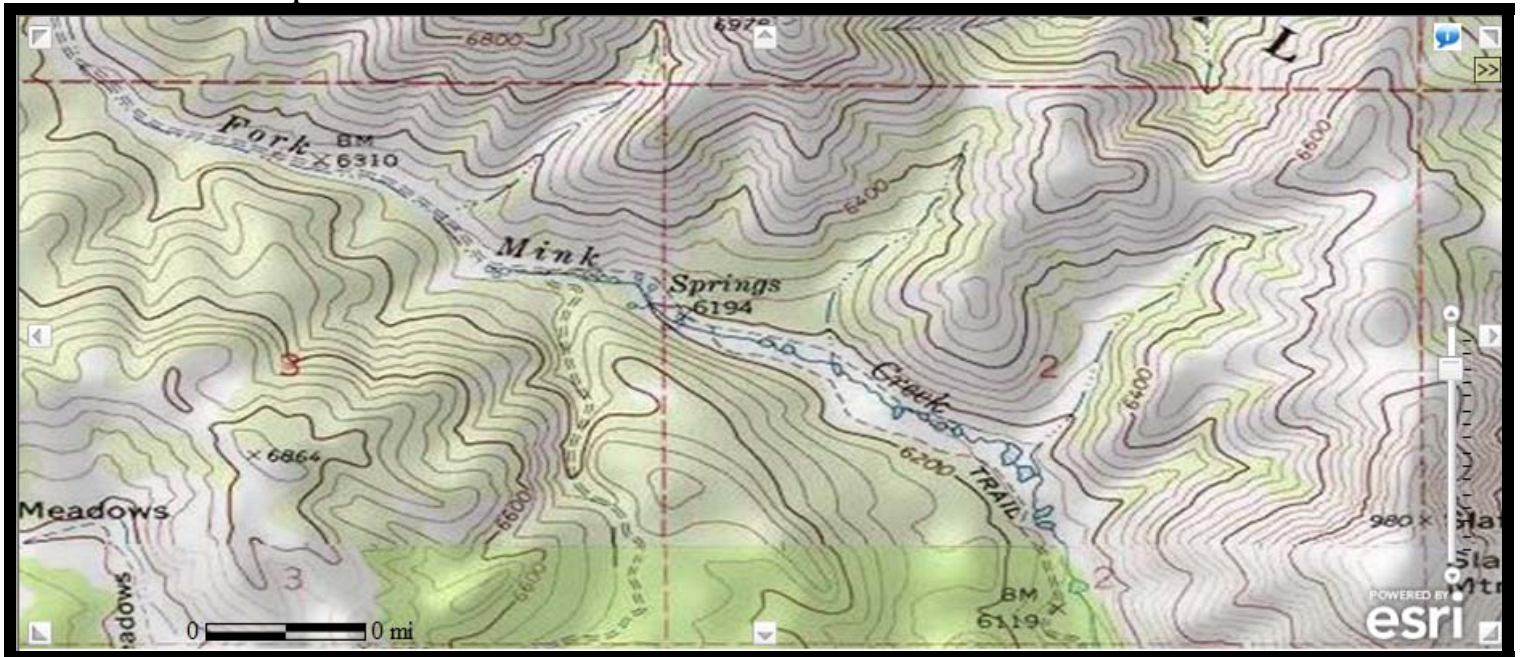


Figure 4: Beaver Ponds on West Fork, ca 1977.



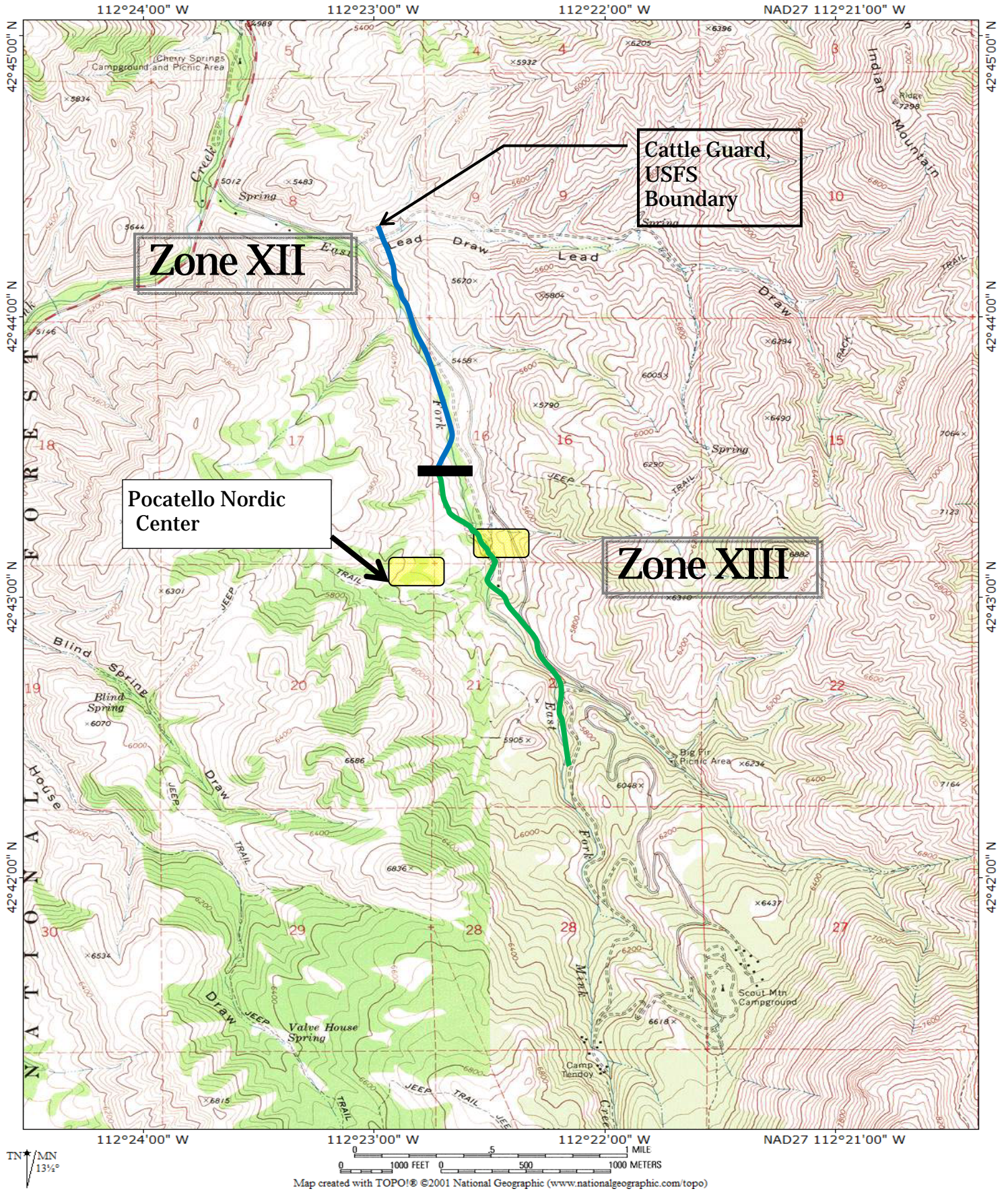


Figure 5