

Note	General Notes
1	<p>These maps are taken from the National Geographic database. BeaverCount staff sketched in the routes using electronic lines. These are approximations of the routes. We assume no liability for the accuracy of the routes nor do we expect that every inch of stream will be surveyed. Use personal responsibility and judgment. NEVER put yourself, your team, nor your family in a situation where you feel uncomfortable</p>
2	<p><u>All</u> team members must register!</p>
3	<p><u>All</u> team members must check-in at the end of the Count!</p>
	<p>Yellow Rectangles indicate possible parking areas.</p>
4	<p>Zone XI (West Fork) is scaled differently than other maps. Moderate to more difficult.</p>
5	<p>The Newman family has offered to let us use their driveway for parking. Please do not park more than three vehicles here. Also if the driveway is icy, 4WD vehicles only. Also use caution when pulling out on to the main highway...visibility is poor.</p>
6	<p>Zone XII and XIII are shown in Figure 5.</p>
7	<p>Yellow Rectangles indicate possible parking areas. PLEASE be CAREFUL pulling out into traffic!</p>
8	<p>Zone descriptions:</p> <ul style="list-style-type: none"> • Green: Easiest. Typically flat terrain, short (less than 3 miles Round Trip: RT) and near roads; • Blue: Intermediate. Some brush, steep terrain 3-5 miles RT; • Red; Challenging: Steep terrain, brushy, and possible long distance 5-9 mi. RT;
9	<p>No warming hut is proposed for the South Fork this year.</p>
10	<p>Some zones are marked with a slash indicating that there are no longer beaver in those areas. We will not be censusing them. However, feel free to contact Idaho Fish and Game Regional Office Mark Gamblin at 208-234-4703 and ask him, "Why?"</p>

Zone	Difficulty Level	Description	Parking
I	Green	Park at Cherry Springs. Travel paved trail downstream (north). Investigate creek as far as possible. Expect ice on the trail and brush. Mark your end point. It may be best to split your team into two parties, one for the East side of the Creek, one for the West.	Cherry Springs Day Use Area
Ia	Green	The lower part of the creek may be best assessed by parking at Kinney Creek trailhead and walking the road up to Cherry Springs.	Kinney Creek
II	Green	Park at Cherry Springs. Travel paved trail upstream (south). Ice or snow on the trail possible. Possible access upstream of paved trail end on W. side of creek. Teams may want to split to cover East and West sides of the creek and scout from Mink Creek Hwy. At the end of the trail, some bushwacking may be required or walk up the road to Newman's. A limited number of people may park at Newman's.	Cherry Springs Day Use Area or pullout along Mink Creek Highway
III	Green	This section is best accessed by walking the road. (There is very little safe access near the creek.) Begin at the East Fork Road. Ends at the bridge at the Bannock Guard Station.	Bannock Guard Station or Mink Creek Group site (TBA)
IV	Green	Begin at the Bannock Guard Station. Travel along the creek. Be cautious of steep embankments. Continue down road past storage barns and access creek beyond barbwire fence. End at the Mink Cr. Hwy Bridge.	Bannock Guard Station
V	Blue	Begin at the Mink Cr. Hwy bridge located at the Mink Creek Day Use area. Follow road to Valve house draw trail head. Cross creek and follow the uphill side of the fence line. Travel overland on E. side of Mink Creek upstream to the South Fork bridge. This is an unmarked trail in most sections. The East bank is steep and without snow, may be slippery. End at the Southfork Bridge just upstream from the cattleguard.	West Fork Parking Lot

VI	Green	Note that the South Fork gate is closed at this time of year. This zone was originally a green (2) zone, then changed to a blue (1) then the round trip is about 3.2 miles of flat travel. The creek is near the road, so active sites can be seen from the road. The zone ends at the culvert where the South fork Crosses the road	S. Fk. Gate Parking Lot.
VII	Blue	Begins at the S. Fk. Crossing about 1.5 miles from the lower S. Fk parking lot where the S. Fk. Mink Creek. Ends at the Box Canyon Trail head. About 8-9 miles, round trip.	S. Fk. Gate Parking Lot.
VII	RED	Park at the South Fork Gate parking lot. Hike down the south fork road until you see a small stream crossing under the road at the bottom of the hill, about 300 yds. Hike up that drainage to the top of the hill	S. Fk. Gate Parking Lot.
IX	Red	Begin at the Box Canyon Trail head (not the road) east up to the single track trail about a mile, until you notice a small drainage to the south. Difficulty rating for distance travelled; About 10-12 miles, round trip	S. Fk. Gate Parking Lot.
X	Red	This is a longest distance and includes all of the South Fork along the road, beginning at the Box Canyon Trail head. This are is one that we are most interested in getting counts. Only those in excellent physical shape should attempt this. Be sure to mark the end of the survey.	S. Fk. Gate Parking Lot.
XI	Red	West Fork of Mink Creek. This parking lot is typically busy. This is a long strenuous hike. Best done in Snowshoes and start early.	Park at the West Fork of Mink Creek Trailhead.
XII	Green	Lower portion of East Fork of Mink Creek between the large willows and the cattle guard at the bottom of the East Fork Road. If there is snow, participants are asked to keep off the groomed XC trails.	Park either at the lower ski area gate or a pullout between the cattle guard and the lower gate
XIII	Blue	Begin at the culvert where the East Fork Crosses the road. Cross the fence near the gate. Follow the road. Continue past the stock pens and upstream. Not all of the lower section of this zone may be accessible due to multiple layers of barbed wire.	Upper XC area gate near at the bottom of the Nordic Center driveway

XXA	Green	<p>Jackson Creek: Follow the creek up to the Boxcar. This is best approached by following the creek upstream East Side of the Creek.</p>	<p>Get permission from Charlotte Vaughn just off Bonneville Road. Park at the pulloff due south of where Jackson Creek flows under Bonneville Road.</p>
XXB	Blue	<p>Jackson Creek: From the Red Union Pacific boxcar, follow the creek towards the NW or to the left facing upstream. The stream will eventually bear due east. Continue up to the USFS Boundary. There should be a sign and a fence at the boundary. This is a long hike, depending up on snow conditions.</p>	<p>Park as with zone XXA</p>
XXIII	Green	<p>This zone crosses multiple private property areas. Therefore, please ensure that permission is obtained. The creek can be counted from the upper end or the lower end. There are fences, barbed wire and abundant wildlife, including mountain lions.</p>	<p>There is much private property on this survey reach. All landowners should be consulted prior to counting.</p>

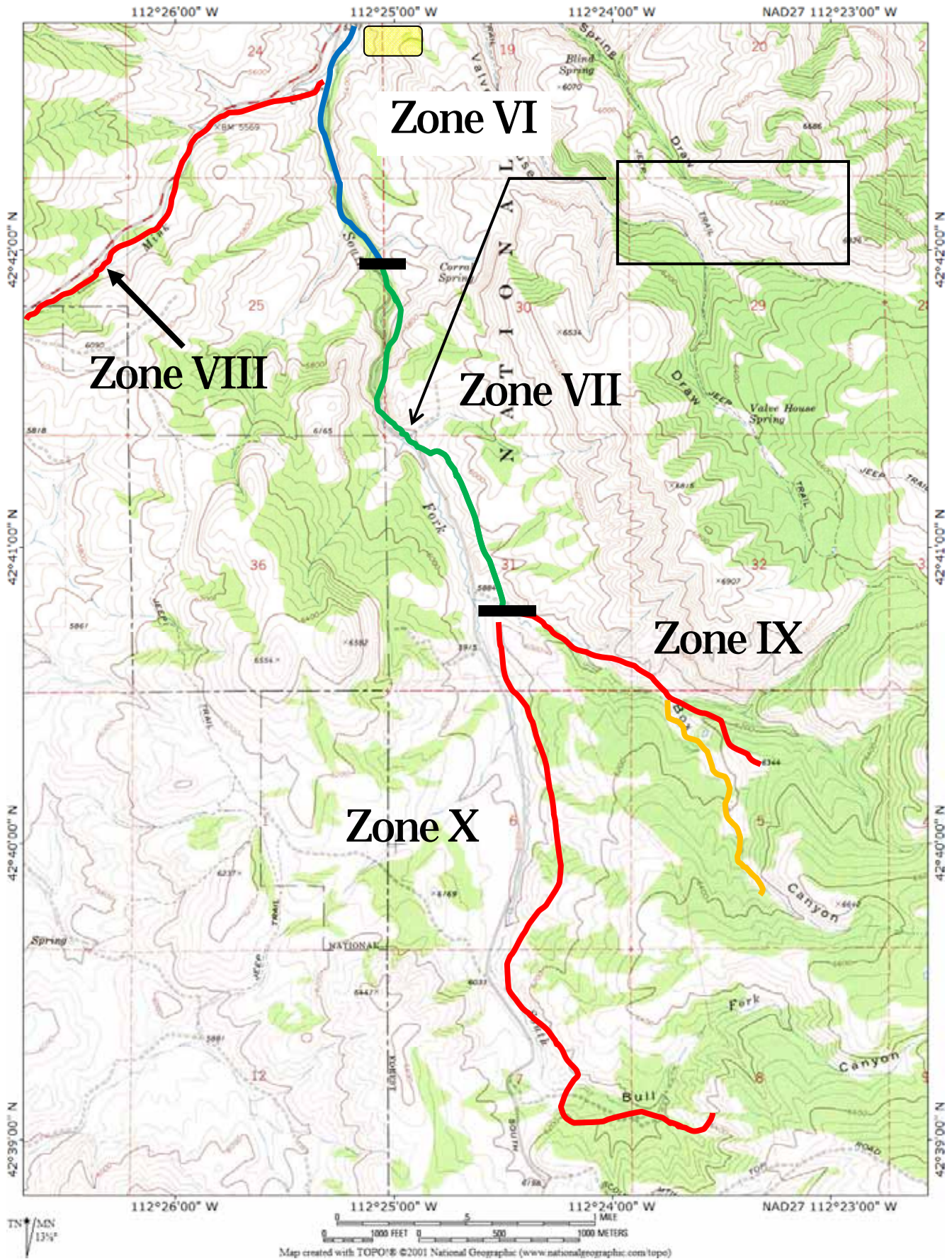


Figure 1

BeaverCount 2018

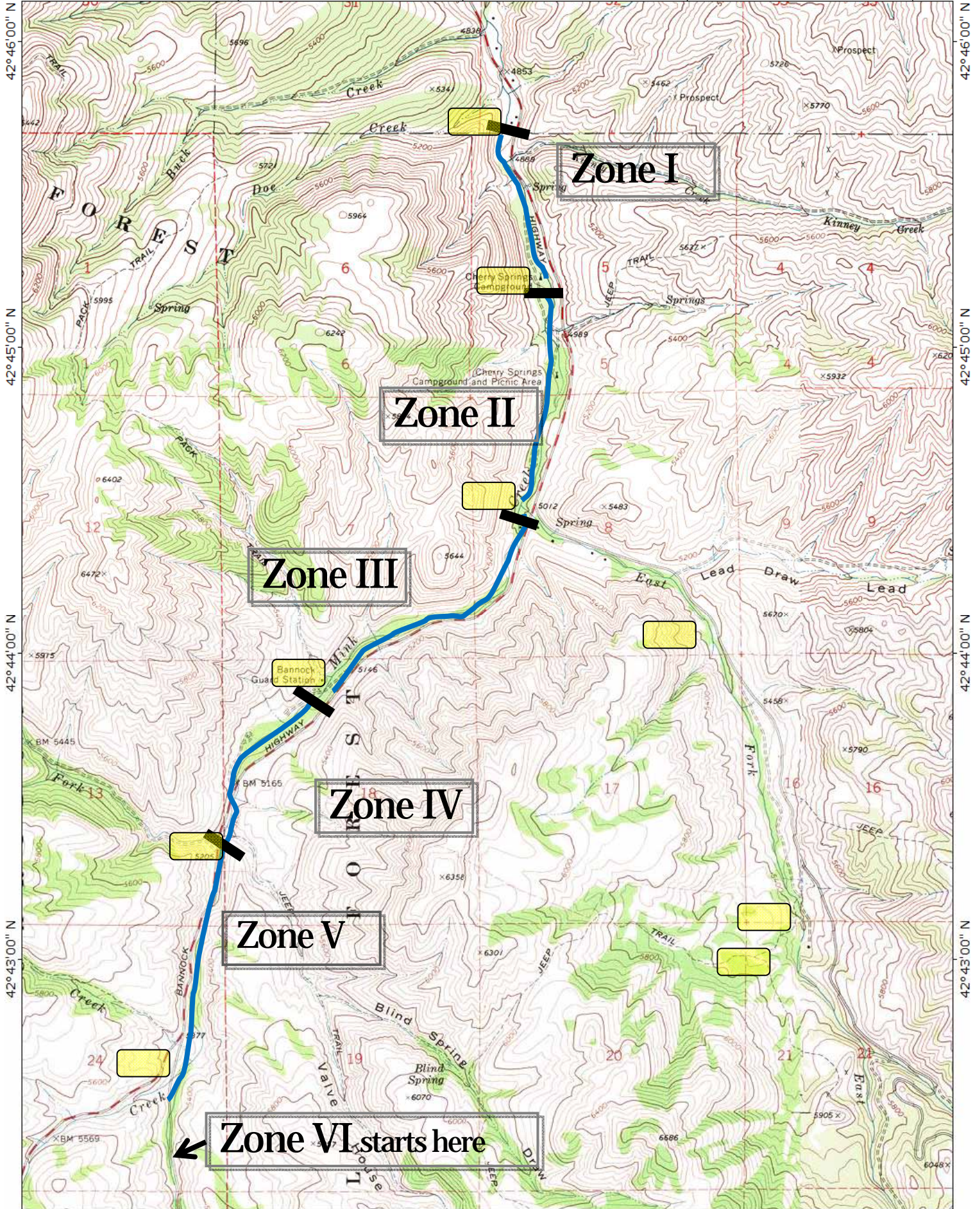
Zones and Maps

112°25'00" W

112°24'00" W

112°23'00" W

NAD27 112°22'00" W



42°46'00" N

42°46'00" N

42°45'00" N

42°45'00" N

42°44'00" N

42°44'00" N

42°43'00" N

42°43'00" N

112°25'00" W

112°24'00" W

112°23'00" W

NAD27 112°22'00" W

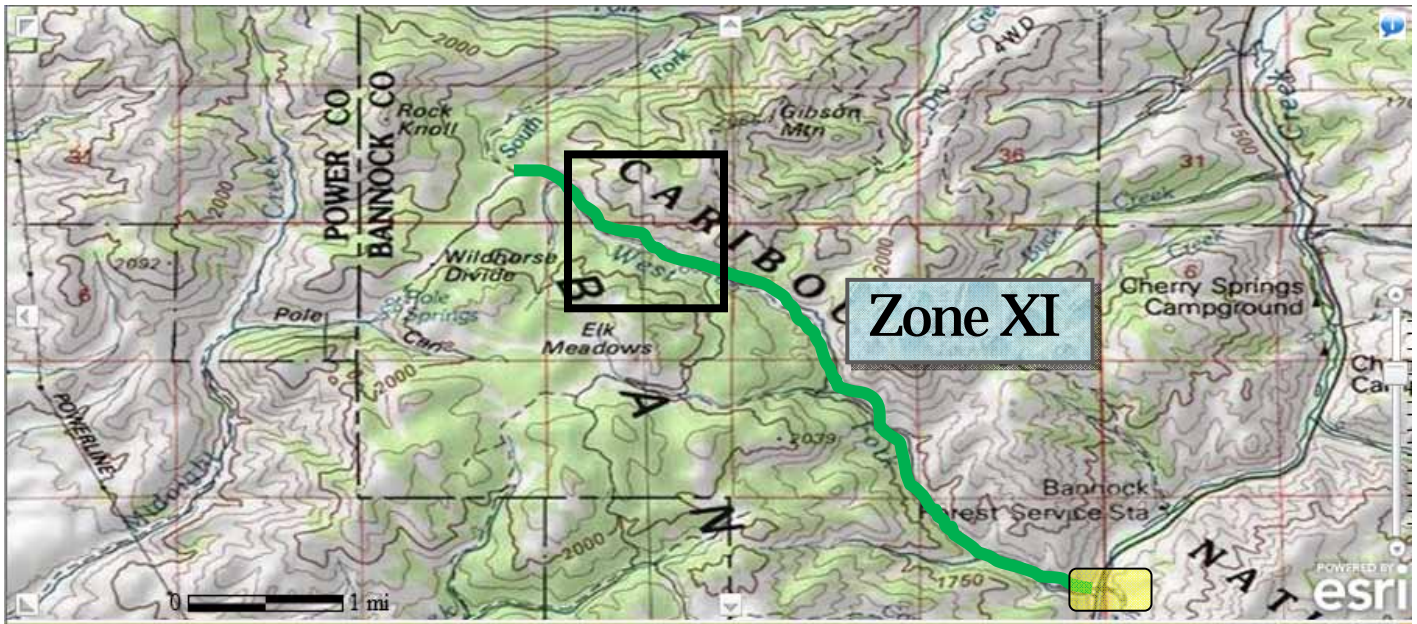


Figure 3

The map below is a blow up the upper portion of the Zone X. Note all of the little blue circles along the ponds. These were no doubt beaver ponds. You will have to reach the top of the drainage to reach these ponds.

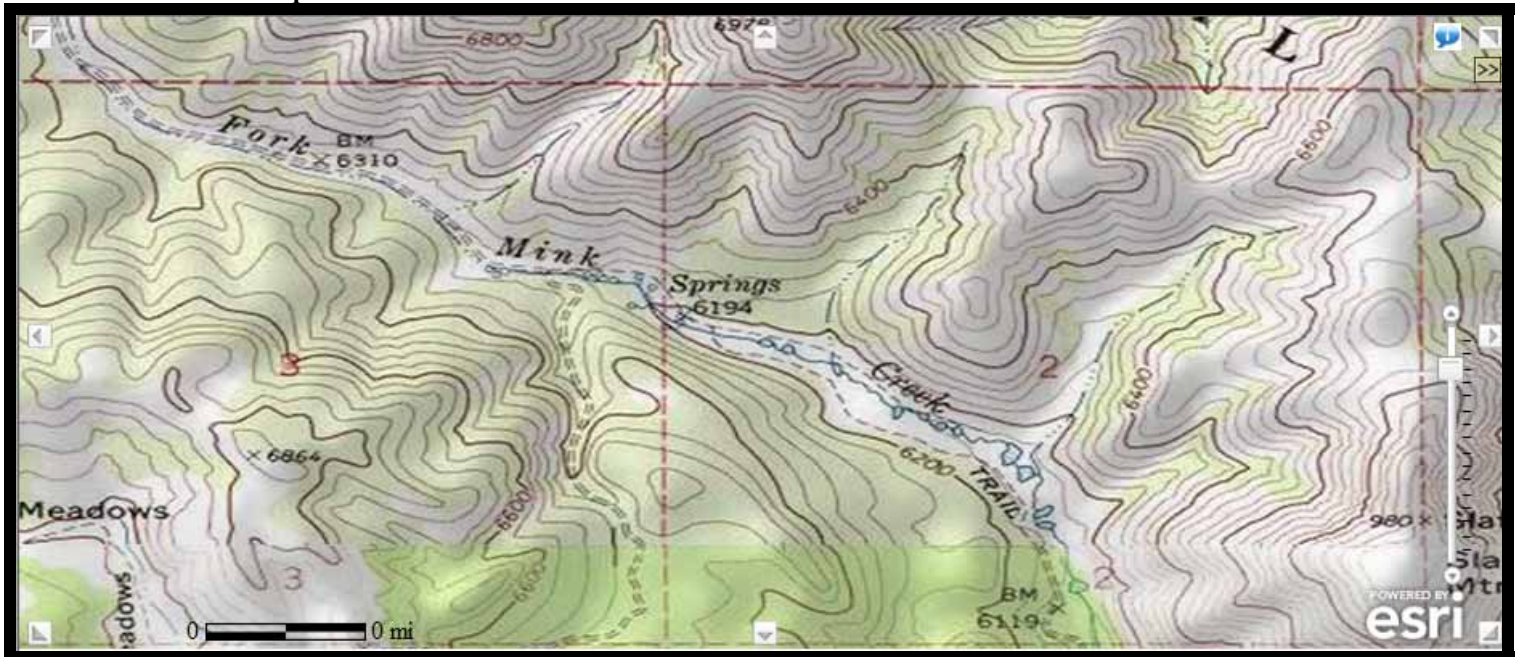


Figure 4: Beaver Ponds on West Fork, ca 1977.

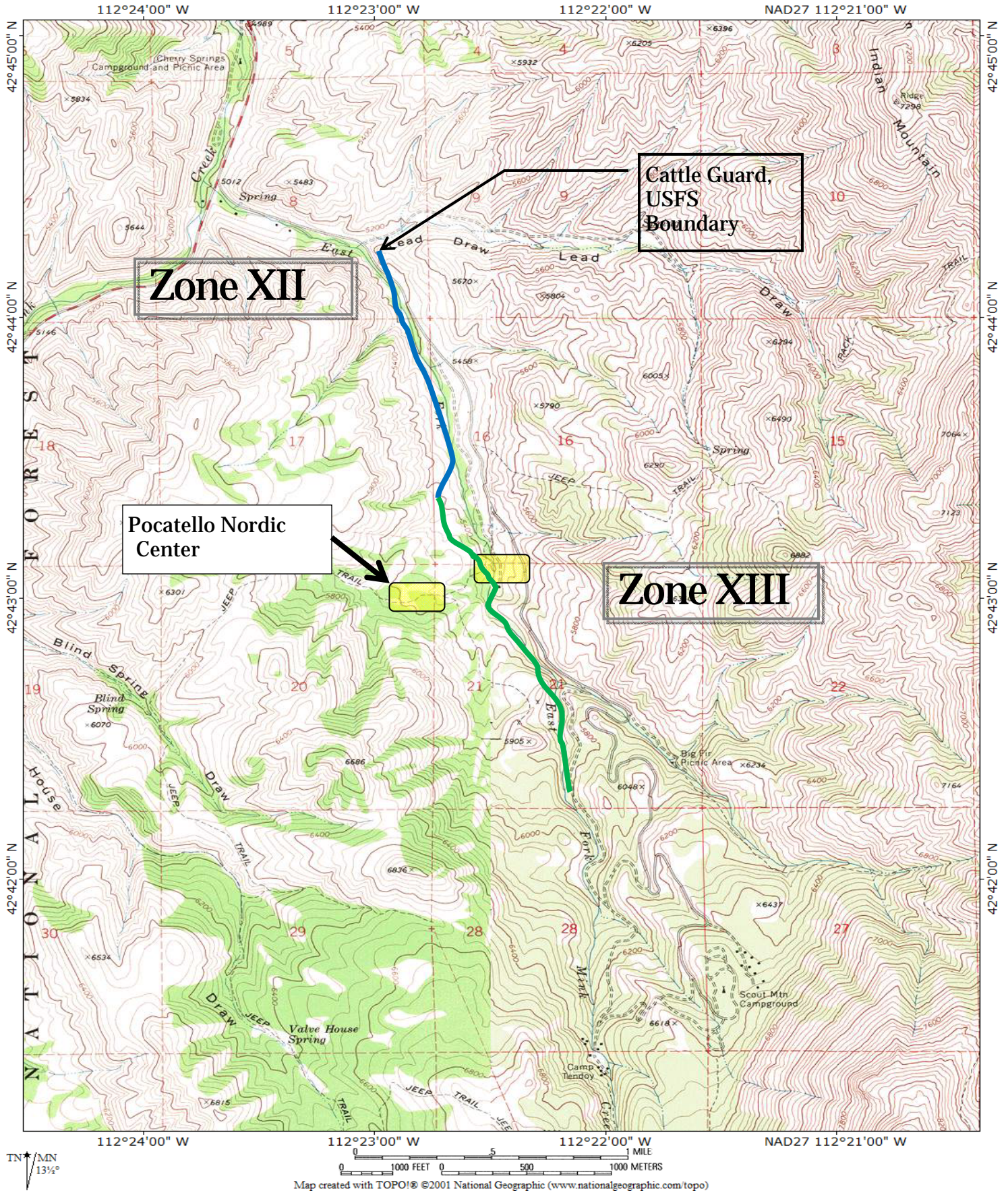


Figure 5

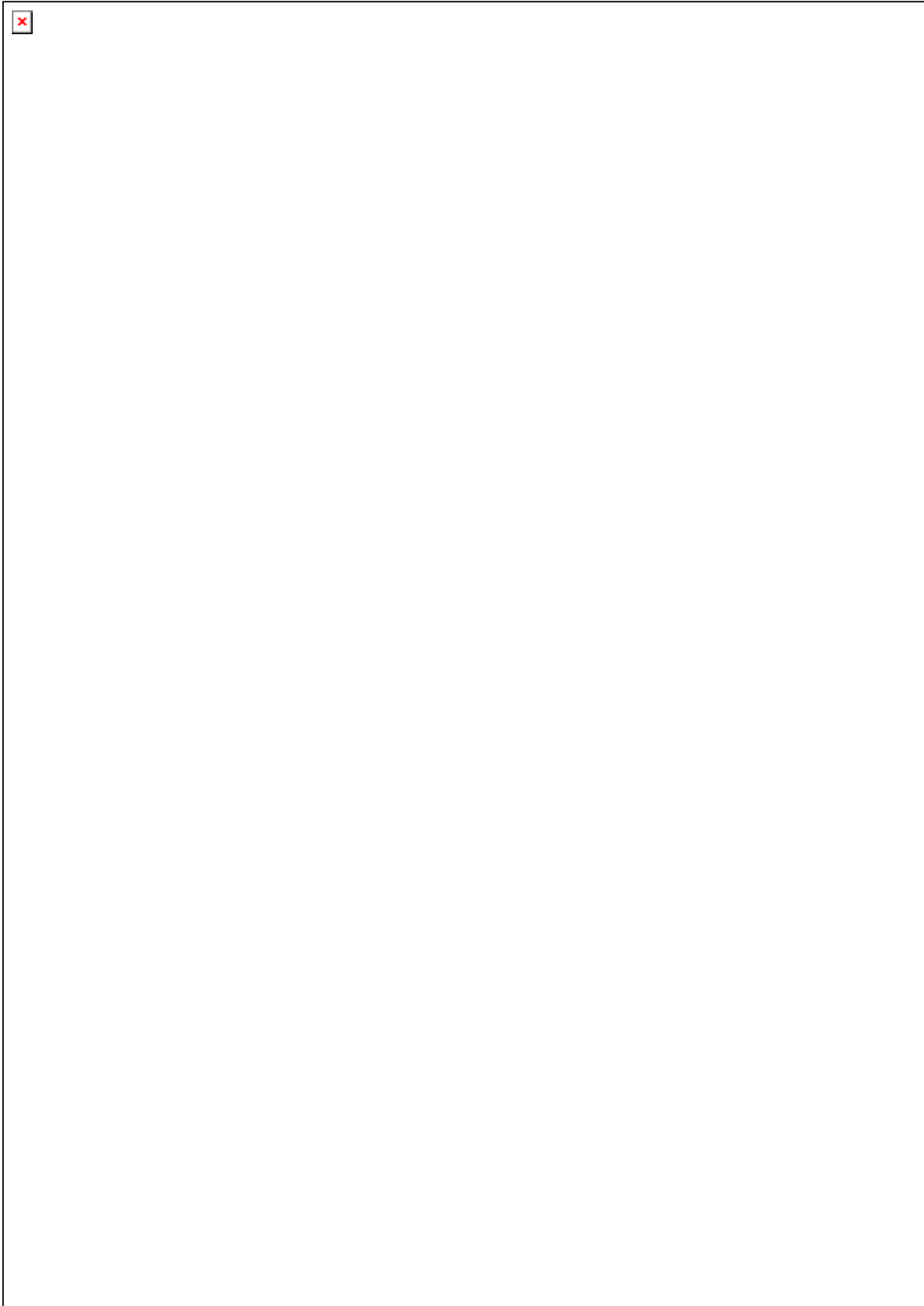


Figure 6

