

## List of pages

Trip Kit Index

Airport Information For VGBR

Terminal Charts For VGBR

Revision Letter For Cycle 12-2021

Change Notices

Notebook

## General Information

Location: BARISHAL BGD  
ICAO/IATA: VGBR / BZL  
Lat/Long: N22° 47.9', E090° 18.1'  
Elevation: 10 ft

Airport Use: Public  
Daylight Savings: Not Observed  
UTC Conversion: -6:00 = UTC  
Magnetic Variation: 1.0° W

Customs: No  
Airport Type: IFR  
Landing Fee: No  
Control Tower: Yes  
Jet Start Unit: No  
LLWS Alert: No  
Beacon: No

Sunrise: 2327 Z  
Sunset: 1244 Z

## Runway Information

Runway: 17  
Length x Width: 6001 ft x 98 ft  
Surface Type: bitu  
TDZ-Elev: 10 ft  
Stopway: 200 ft

Runway: 35  
Length x Width: 6001 ft x 98 ft  
Surface Type: bitu  
TDZ-Elev: 10 ft  
Stopway: 164 ft

## Communication Information

Barishal Tower: 129.300 Secondary  
Barishal Tower: 128.100

VGBR/BZL

Apt Elev 10'  
N22 47.9 E090 18.1

JEPPESSEN

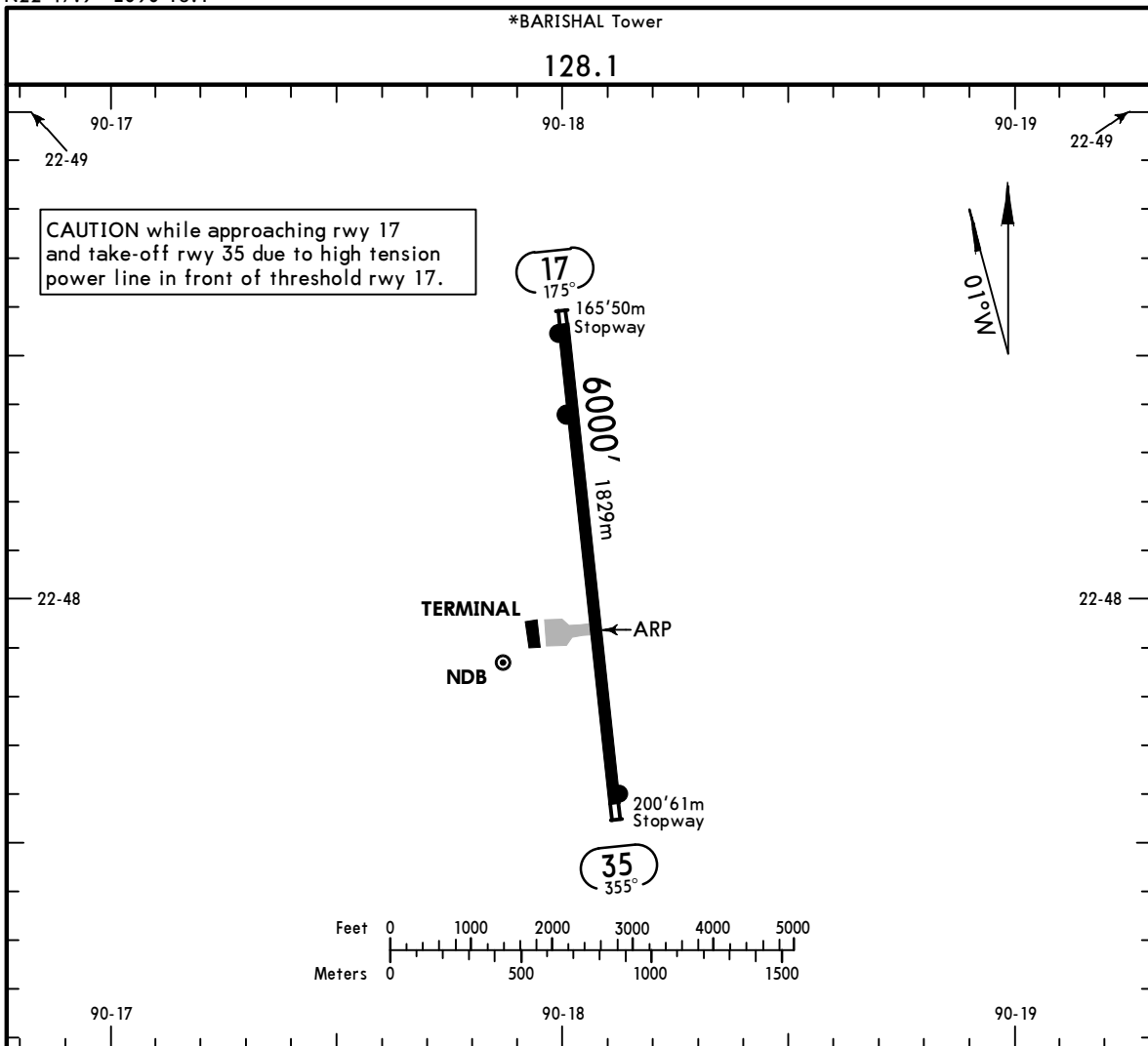
BARISHAL, BANGLADESH

15 FEB 19

10-9

Eff 28 Feb

BARISHAL



ADDITIONAL RUNWAY INFORMATION

RWY	USABLE LENGTHS	WIDTH
17 35 PAPI-L		98' 30m

TAKE-OFF

AIR CARRIER (JAA)

All Rwys

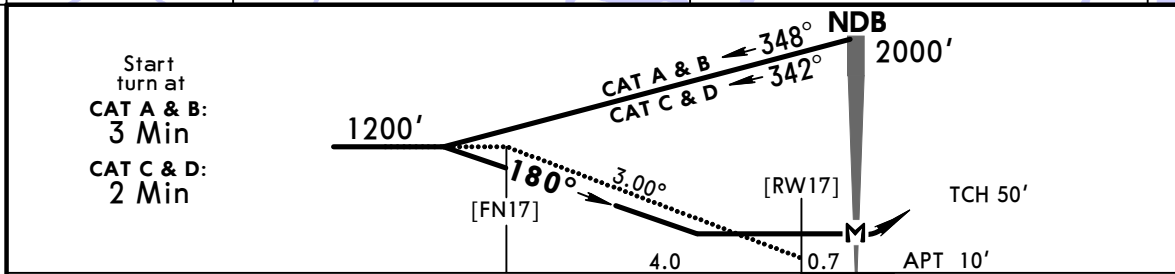
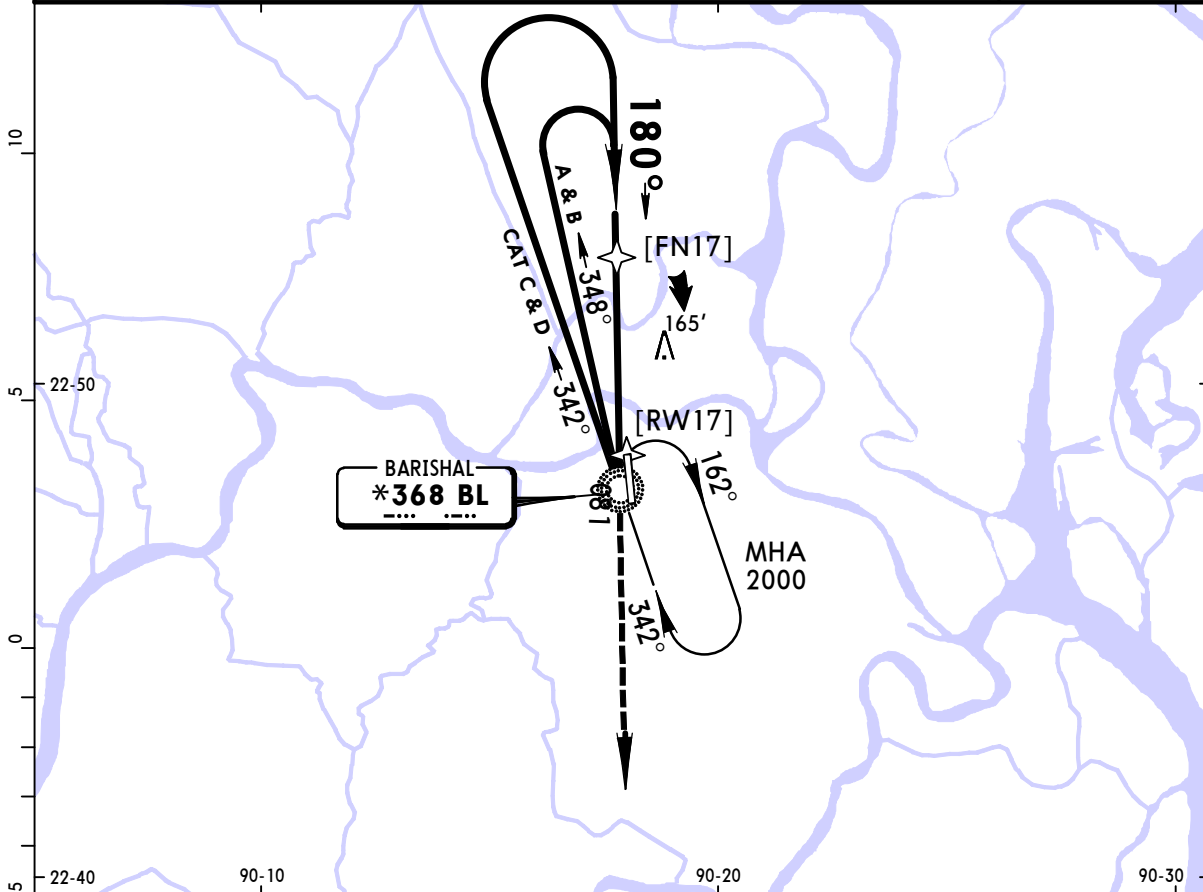
	LVP must be in force RCLM (DAY only) or RL	RCLM (DAY only) or RL
A	250m	400m
B		
C		
D	300m	

VGBR/BZL  
BARISHAL

JEPPESEN  
15 FEB 19 (16-1)

BARISHAL, BANGLADESH  
Eff 28 Feb  
NDB Rwy 17

*BARISHAL Tower					
128.1					
BRIEFING STRIP™	NDB BL *368	Final Apch Crs 180°	Minimum Alt No FAF	MDA(H) 500' (490')	Apt Elev 10'
	MISSED APCH: Climb on track 180° to 2000' and as directed.				
Alt Set: hPa		Apt Elev: 0 hPa	Trans level: FL 60	Trans alt: 4000'	MSA BL NDB



Gnd speed-Kts	70	90	100	120	140	160			
Descent Angle 3.00°	372	478	531	637	743	849			
MAP at NDB									

STRAIGHT-IN LANDING RWY 17

MDA(H) 500' (490')

A	2000m		
B	2400m		
C			
D	2800m		

PANS OPS

CHANGES: Location name. Lights.

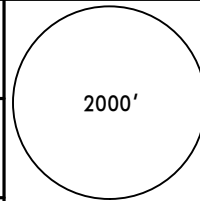
© JEPPESEN, 2004, 2019. ALL RIGHTS RESERVED.

\*BARISHAL Tower

128.1

BRIEFING STRIP™

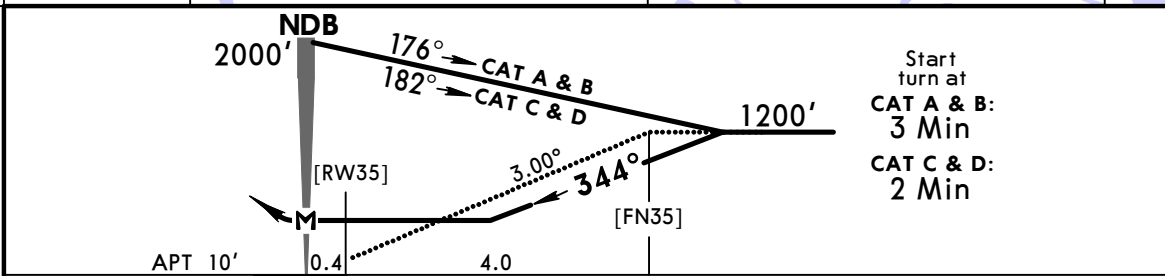
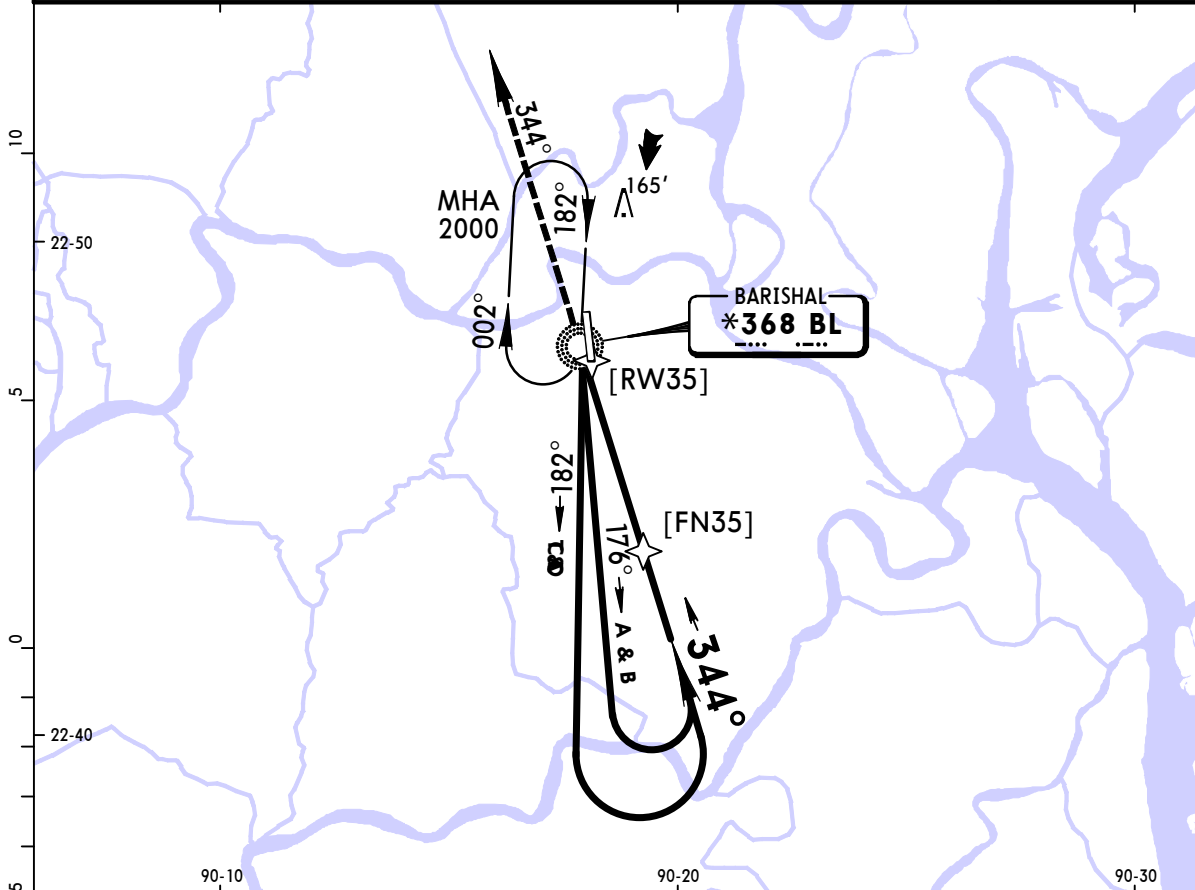
NDB BL <b>*368</b>	Final Apch Crs <b>344°</b>	Minimum Alt No FAF	MDA(H) <b>500'</b> (490')	Apt Elev 10'
-----------------------	-------------------------------	-----------------------	------------------------------	--------------



**MISSED APCH:** Climb on track 344° to 2000' and as directed.

Alt Set: hPa    Apt Elev: 0 hPa    Trans level: FL 60    Trans alt: 4000'

MSA BL NDB



Start turn at  
CAT A & B:  
3 Min  
CAT C & D:  
2 Min

Gnd speed-Kts	70	90	100	120	140	160	PAPI-L	2000' ↑ on 344°
Descent Angle 3.00°	372	478	531	637	743	849		
MAP at NDB								

STRAIGHT-IN LANDING RWY 35

MDA(H) **500'** (490')

A	2000m
B	2400m
C	2800m
D	

PANS OPS

## Chart changes since cycle 11-2021

ADD = added chart, REV = revised chart, DEL = deleted chart.

ACT	PROCEDURE IDENT	INDEX	REV DATE	EFF DATE
-----	-----------------	-------	----------	----------

**BARISHAL, (BARISHAL - VGBR)**

## TERMINAL CHART CHANGE NOTICES

### No Chart Change Notices for Airport VGBR