

## List of pages

Index

Airport Information For VGCB

Terminal Charts For VGCB

Revision Letter For Cycle 12-2021

Change Notices

Notebook

## General Information

Location: COX'S BAZAR BGD  
ICAO/IATA: VGCB / CXB  
Lat/Long: N21° 27.0', E091° 57.9'  
Elevation: 12 ft

Airport Use: Public  
Daylight Savings: Not Observed  
UTC Conversion: -6:00 = UTC  
Magnetic Variation: 1.0° W

Customs: No  
Airport Type: IFR  
Landing Fee: Yes  
Control Tower: Yes  
Jet Start Unit: No  
LLWS Alert: No  
Beacon: No

Sunrise: 2322 Z  
Sunset: 1235 Z

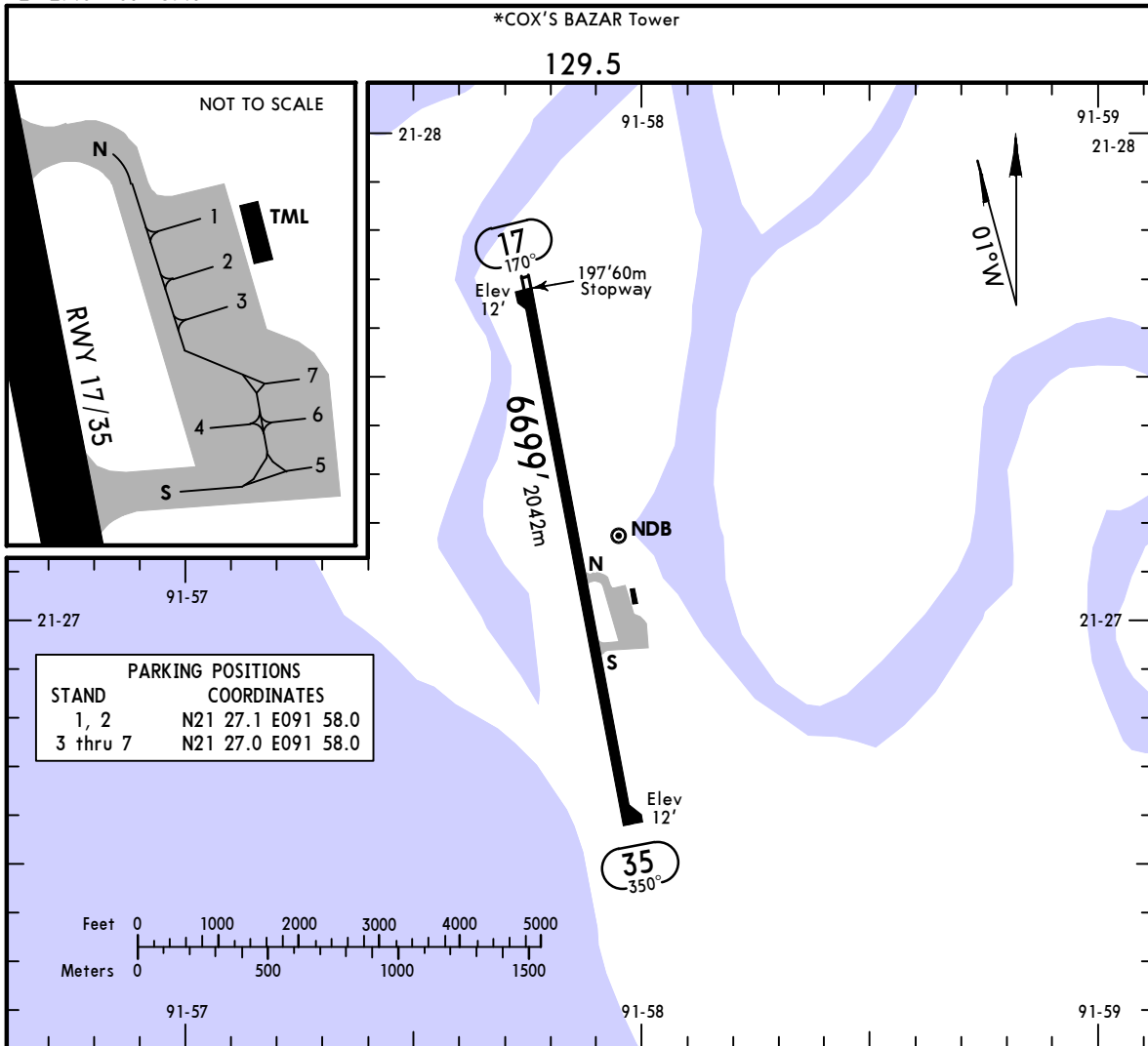
## Runway Information

Runway: 17  
Length x Width: 6699 ft x 125 ft  
Surface Type: concrete  
TDZ-Elev: 12 ft  
Lighting: Edge

Runway: 35  
Length x Width: 6699 ft x 125 ft  
Surface Type: concrete  
TDZ-Elev: 12 ft  
Lighting: Edge  
Stopway: 197 ft

## Communication Information

Cox's Bazar Tower: 129.500  
Cox's Bazar Tower: 128.500 Secondary



ADDITIONAL RUNWAY INFORMATION

RWY	USABLE LENGTHS	LANDING BEYOND	TAKE-OFF	WIDTH
17 35	RL	PAPI-L		125' 38m

TAKE-OFF

AIR CARRIER (JAA)

All Rwys

	LVP must be in force RCLM (DAY only) or RL	RCLM (DAY only) or RL
A		
B	250m	400m
C		
D	300m	

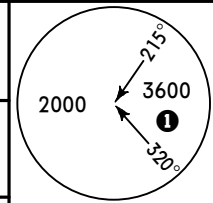
A		
B	250m	400m
C		
D	300m	

\*COX'S BAZAR Tower

129.5

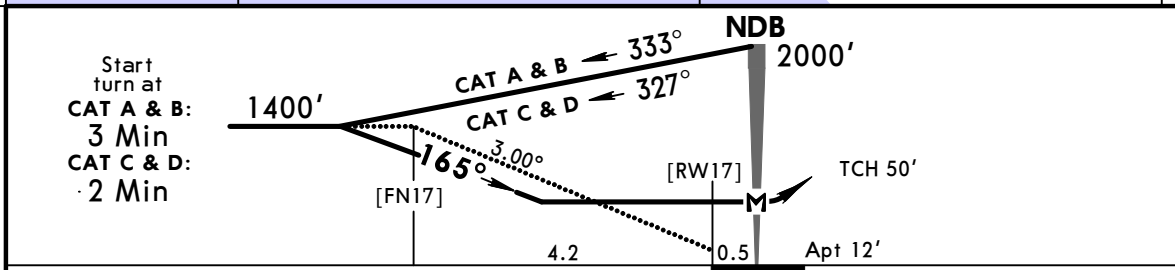
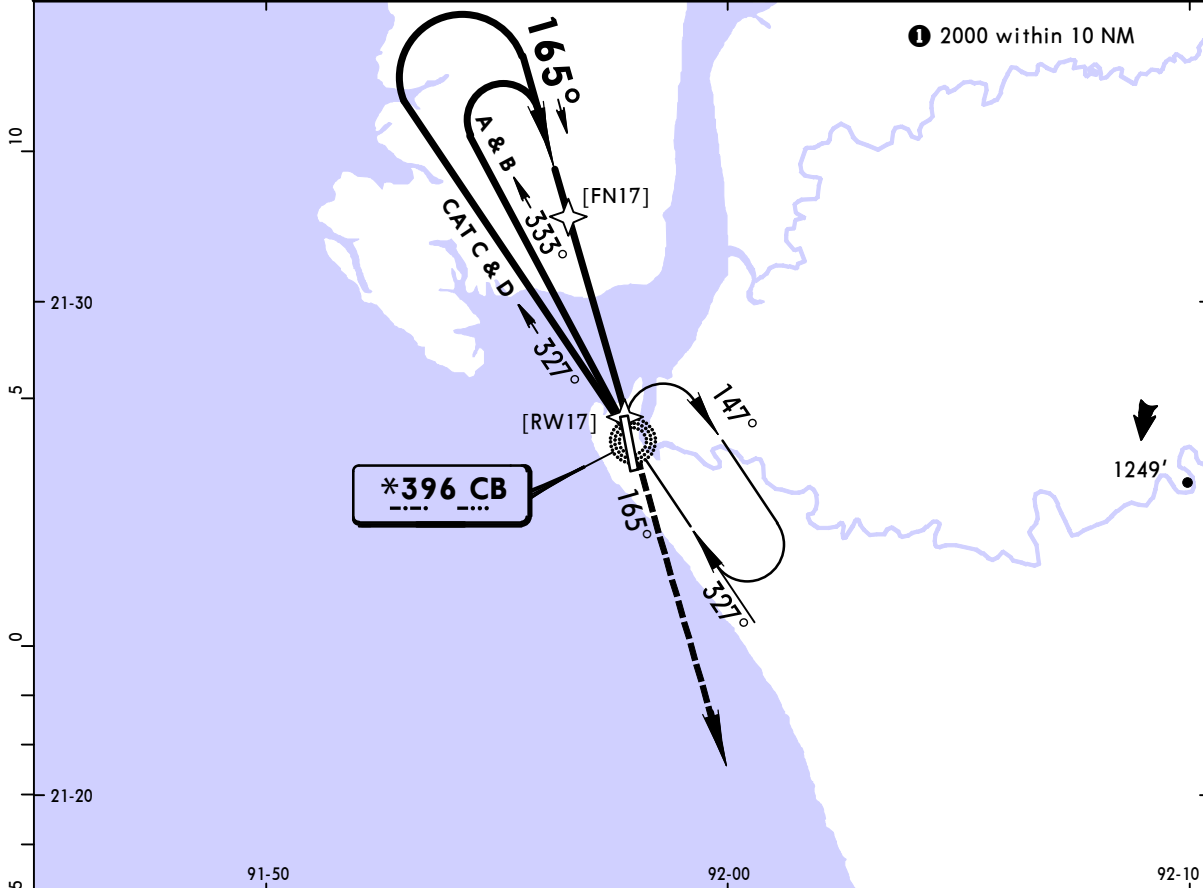
BRIEFING STRIP™

NDB CB <b>*396</b>	Final Apch Crs <b>165°</b>	Minimum Alt No FAF	MDA(H) <b>580'</b> (568')	Apt Elev 12'
--------------------------	----------------------------------	-----------------------	------------------------------	--------------



**MISSED APCH:** Climb on track 165° to 2000' and contact ATC.

Alt Set: hPa      Apt Elev: 0 hPa      Trans level: FL 60      Trans alt: 4000'      MSA CB NDB



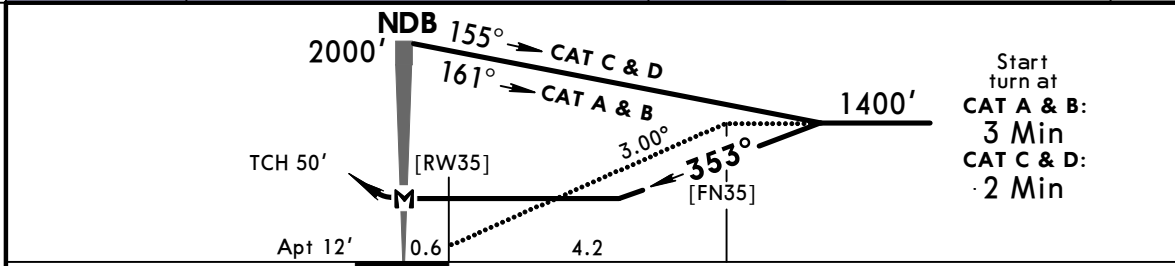
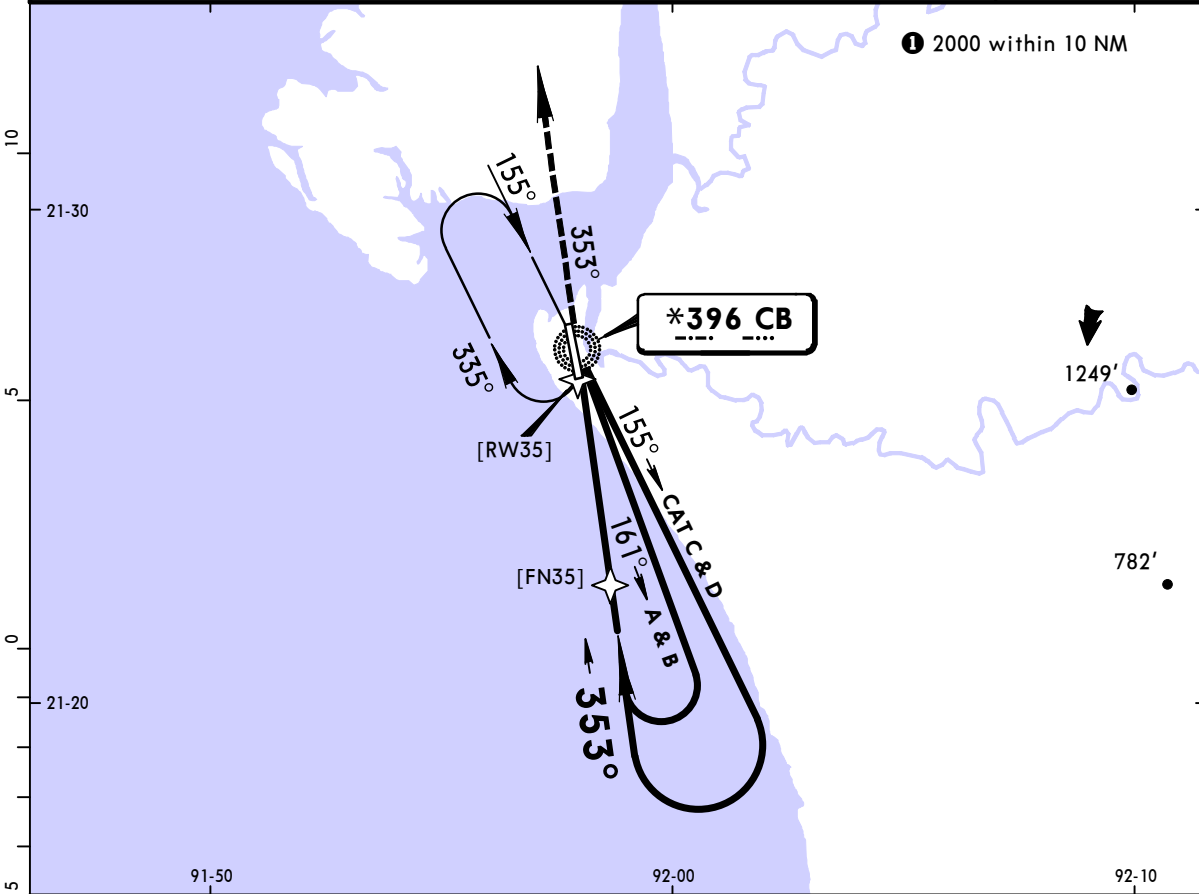
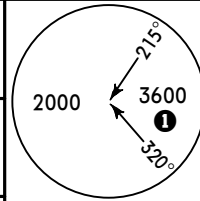
Gnd speed-Kts	70	90	100	120	140	160	PAPI-L	2000' on 165°
Descent Angle 3.00°	372	478	531	637	743	849		
MAP at NDB								

STRAIGHT-IN LANDING RWY 17  
MDA(H) **580'** (568')

A	2000m	
B	2400m	
C	2800m	
D		

PANS OPS

*COX'S BAZAR Tower					
129.5					
BRIEFING STRIP™	NDB CB <b>*396</b>	Final Apch Crs <b>353°</b>	Minimum Alt No FAF	MDA(H) <b>580'</b> (568')	Apt Elev 12'
	<b>MISSED APCH: Climb on track 353° to 2000' and contact ATC.</b>				
Alt Set: hPa		Apt Elev: 0 hPa	Trans level: FL 60	Trans alt: 4000'	MSA CB NDB



Gnd speed-Kts	70	90	100	120	140	160	PAPI-L	2000' on 353°
Descent Angle 3.00°	372	478	531	637	743	849		
MAP at NDB								

STRAIGHT-IN LANDING RWY 35	
MDA(H) <b>580'</b> (568')	
A	2000m
B	2400m
C	2800m
D	

PANS OPS

## Chart changes since cycle 11-2021

ADD = added chart, REV = revised chart, DEL = deleted chart.

ACT	PROCEDURE IDENT	INDEX	REV DATE	EFF DATE
-----	-----------------	-------	----------	----------

**COX'S BAZAR, (COX'S BAZAR - VGCB)**

## TERMINAL CHART CHANGE NOTICES

### No Chart Change Notices for Airport VGCB