

List of pages

Trip Kit Index
Airport Information For VGEG
Terminal Charts For VGEG
Revision Letter For Cycle 22-2020
Change Notices
Notebook

General Information

Location: CHATTOGRAM BGD
ICAO/IATA: VGEG / CGP
Lat/Long: N22° 15.4', E091° 49.3'
Elevation: 14 ft

Airport Use: Public
Daylight Savings: Not Observed
UTC Conversion: -6:00 = UTC
Magnetic Variation: 1.0° W

Fuel Types: 100 Octane (LL), 100-130 Octane, Jet A-1
Customs: Yes
Airport Type: IFR
Landing Fee: Yes
Control Tower: Yes
Jet Start Unit: No
LLWS Alert: No
Beacon: Yes

Sunrise: 0023 Z
Sunset: 1150 Z

Runway Information

Runway: 05
Length x Width: 9646 ft x 148 ft
Surface Type: concrete
TDZ-Elev: 14 ft
Lighting: Edge, ALS
Stopway: 492 ft

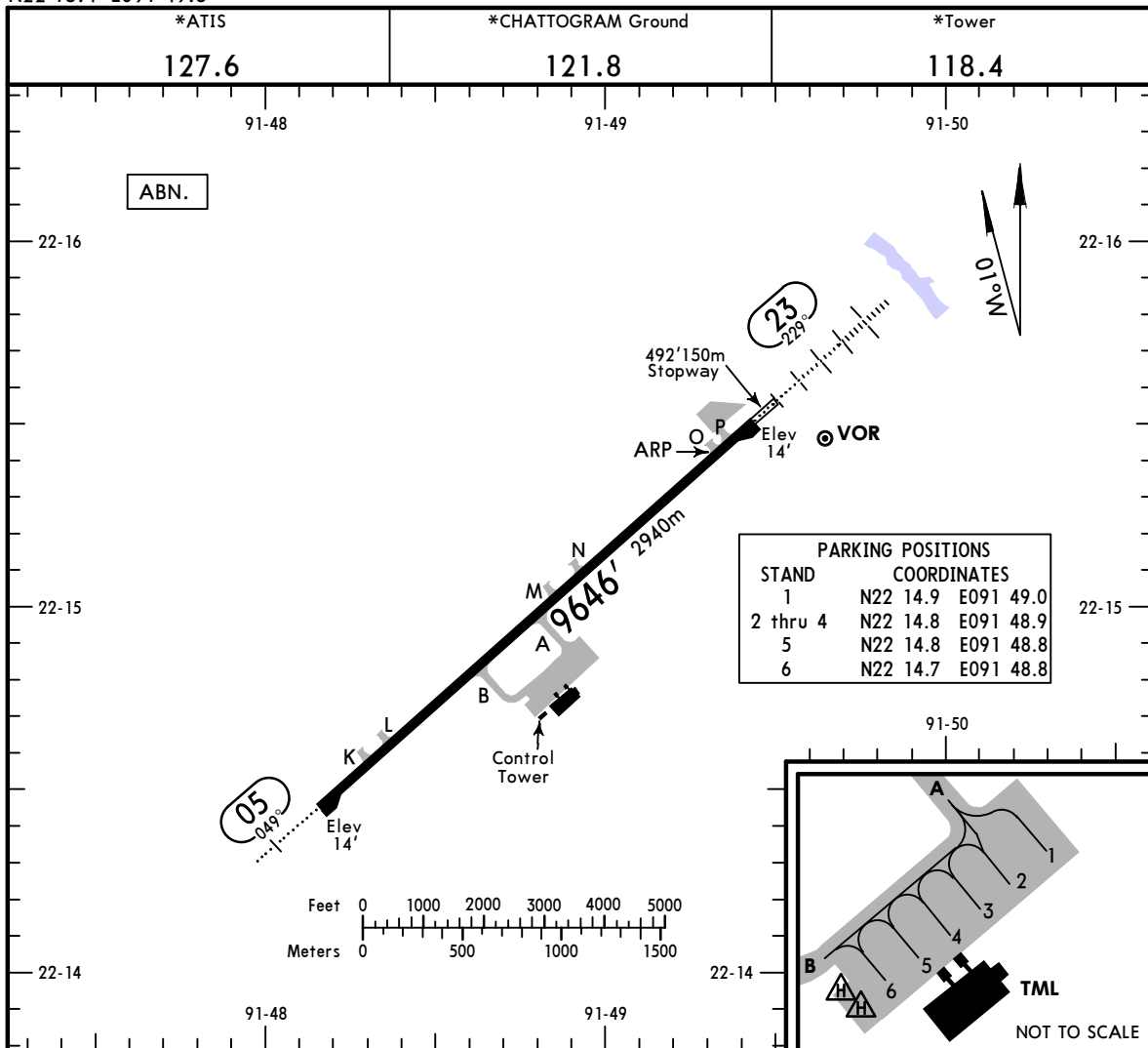
Runway: 23
Length x Width: 9646 ft x 148 ft
Surface Type: concrete
TDZ-Elev: 14 ft
Lighting: Edge, ALS

Communication Information

ATIS: 127.600
Chattogram Tower: 119.400 Secondary
Chattogram Tower: 118.400
Chattogram Ground: 121.800

Chattogram Approach: 119.400 Secondary

Chattogram Approach: 118.400



ADDITIONAL RUNWAY INFORMATION

RWY		USABLE LENGTHS			WIDTH
		Threshold	Landing Beyond Glide Slope	TAKE-OFF	
05	RL ALS PAPI-L (angle 3.0°) RVR				148'
23	RL HIALS PAPI-L (angle 3.0°) RVR		8481' 2585m		45m

TAKE-OFF

AIR CARRIER (JAA)

All Rwy's

	LVP must be in force RCLM (DAY only) or RL	RCLM (DAY only) or RL
A	250m	400m
B		
C		
D		

STRAIGHT-IN RWY		A	B	C	D
05	RNP (LNAV/VNAV)	341'(327')	341'(327')	341'(327')	341'(327')
		1500m	1500m	1500m	1500m
	ALS out	2000m	2000m	2000m	2000m
	RNP (LNAV) ①	410'(396')	410'(396')	410'(396')	410'(396')
		1900m	1900m	1900m	1900m
	ALS out	2300m	2300m	2300m	2300m
	VOR DME ①	500'(486')	500'(486')	500'(486')	500'(486')
		1600m	2000m	2800m	2800m
	ALS out	2000m	2400m	2800m	2800m
	VOR DME	500'(486')	500'(486')	500'(486')	500'(486')
		2300m	2300m	2800m	2800m
	ALS out	2500m	2500m	2800m	2800m
VOR ①	520'(506')	520'(506')	520'(506')	520'(506')	
	1600m	2000m	2800m	2800m	
ALS out	2000m	2400m	2800m	2800m	
VOR	520'(506')	520'(506')	520'(506')	520'(506')	
	2300m	2300m	2800m	2800m	
ALS out	2600m	2600m	2800m	2800m	
23	ILS	314'(300')	326'(312')	334'(320')	345'(331')
		R800mV1000m	R800mV1000m	R800mV1000m	R800mV1000m
	ALS out	1400m	1400m	1400m	1500m
	LOC ①	430'(416')	430'(416')	430'(416')	430'(416')
		2400m	2400m	2400m	2400m
	RNP (LNAV/VNAV)	311'(297')	311'(297')	311'(297')	311'(297')
		900m	900m	900m	900m
	ALS out	1800m	1800m	1800m	1800m
	RNP (LNAV) ①	400'(386')	400'(386')	400'(386')	400'(386')
		1400m	1400m	1400m	1400m
	ALS out	2300m	2300m	2300m	2300m
	VOR ①	520'(506')	520'(506')	520'(506')	520'(506')
	1600m	2000m	2400m	2400m	
ALS out	2000m	2400m	2800m	2800m	
VOR	520'(506')	520'(506')	520'(506')	520'(506')	
	1800m	2000m	2400m	2400m	
ALS out	2600m	2600m	2800m	2800m	

① Continuous Descent Final Approach.

TAKE-OFF

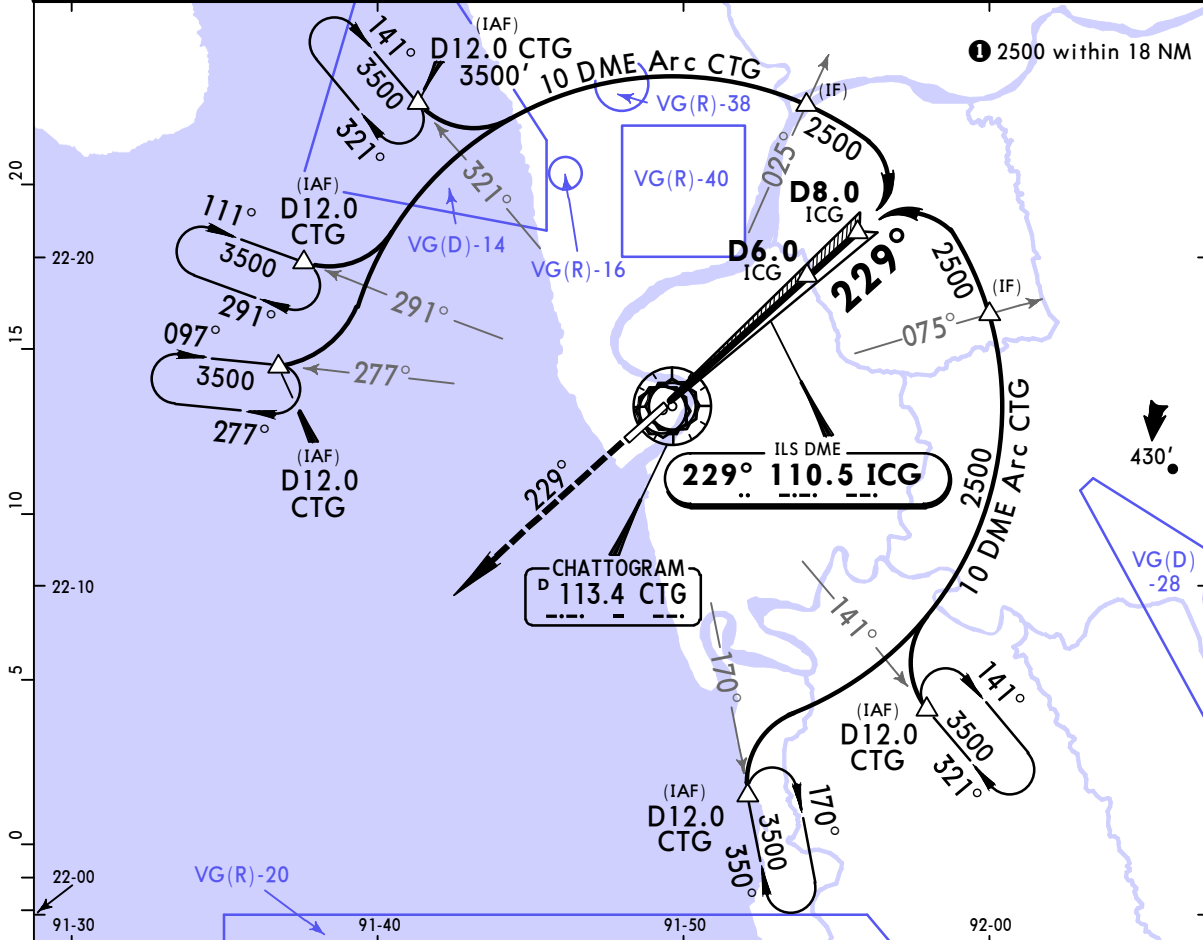
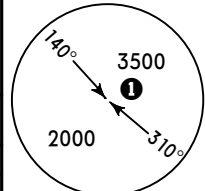
Low Visibility Take-off			
	Day: RL & RCLM Night: RL	Day: RL or RCLM Night: RL	Adequate vis ref (Day only)
A	R300m	400m	500m
B			
C			
D			

VGEG/CGP
SHAH AMANAT INTL

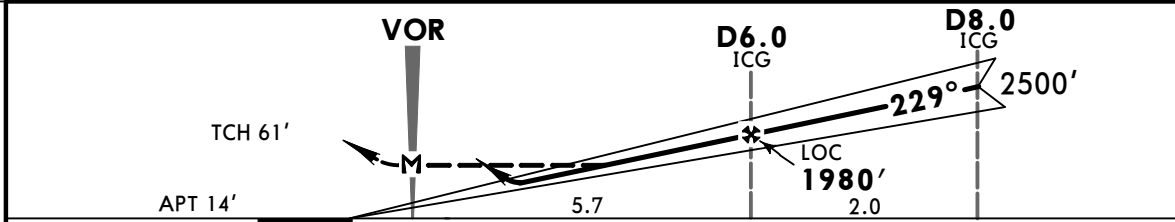
27 SEP 19
Eff 10 Oct (11-1)

JEPPESENCHATTOGRAM, BANGLADESH
VOR ILS DME-Arc Rwy 23

*D-ATIS 127.6		*CHATTOGRAM Tower (APP/TWR) 118.4		*Ground 121.8	
LOC ICG 110.5	Final Apch Crs 229°	GS No Altitude published	ILS DA(H) Refer to Minimums	Apt Elev 14'	
MISSED APCH: Climb to 2000' on track 229° and contact ATC.					
Alt Set: hPa Apt Elev: 1 hPa Trans level: FL 60 Trans alt: 4000'					
CAUTION: 1. Passing ships at the APCH area with mast heights up to 150'. 2. VIS might be reduced during APCH on RWY 23 due to occasional smoke from brick fields.					



LOC (GS out)	ICG DME	1.0	2.0	3.0	4.0	5.0	6.0
	ALTITUDE	390'	710'	1030'	1350'	1660'	1980'



Gnd speed-Kts	70	90	100	120	140	160	HIALS PAPI 2000' on 229°
ILS GS or LOC Descent Angle 3.00°	372	478	531	637	743	849	
MAP at VOR							

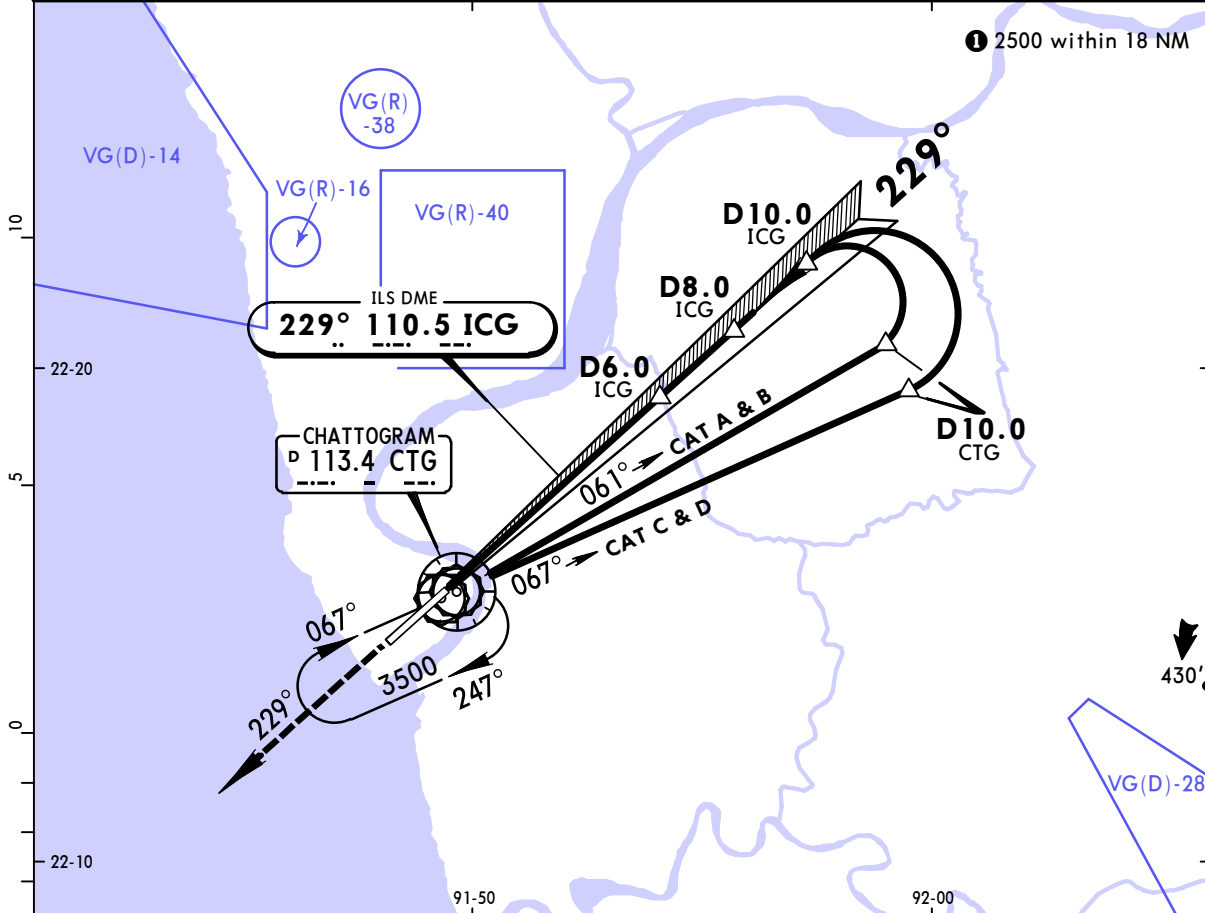
STRAIGHT-IN LANDING RWY 23			
ILS DA(H) A: 314' (300') C: 334' (320') B: 326' (312') D: 345' (331')		LOC (GS out) MDA(H) 430' (416')	
FULL		ALS out	

PANS OPS	A			
	B	RVR 800m	1400m	2400m
	C	VIS 1000m		
	D			

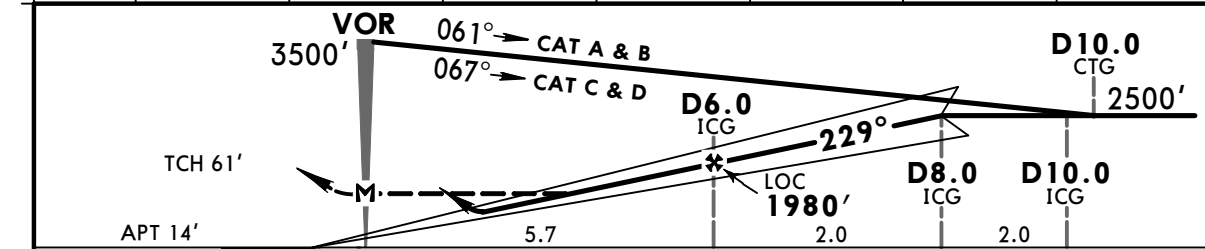
VGEG/CGP
SHAH AMANAT INTL

JEPPESEN CHATTOGRAM, BANGLADESH
 27 SEP 19 **(11-2) Eff 10 Oct** **VOR ILS DME Rwy 23**

*D-ATIS 127.6		*CHATTOGRAM Tower (APP/TWR) 118.4			*Ground 121.8	
LOC ICG 110.5	Final Apch Crs 229°	GS No Altitude published	ILS DA(H) Refer to Minimums	Apt Elev 14'		
MISSED APCH: Climb to 2000' on track 229° and contact ATC.						
Alt Set: hPa Apt Elev: 1 hPa Trans level: FL 60 Trans alt: 4000'						
CAUTION: 1. Passing ships at the APCH area with mast heights up to 150'. 2. VIS might be reduced during APCH on RWY 23 due to occasional smoke from brick fields.						MSA CTG VOR



LOC (GS out)	ICG DME	1.0	2.0	3.0	4.0	5.0	6.0
	ALTITUDE	390'	710'	1030'	1350'	1660'	1980'



Gnd speed-Kts	70	90	100	120	140	160	
ILS GS or LOC Descent Angle 3.00°	372	478	531	637	743	849	
MAP at VOR							

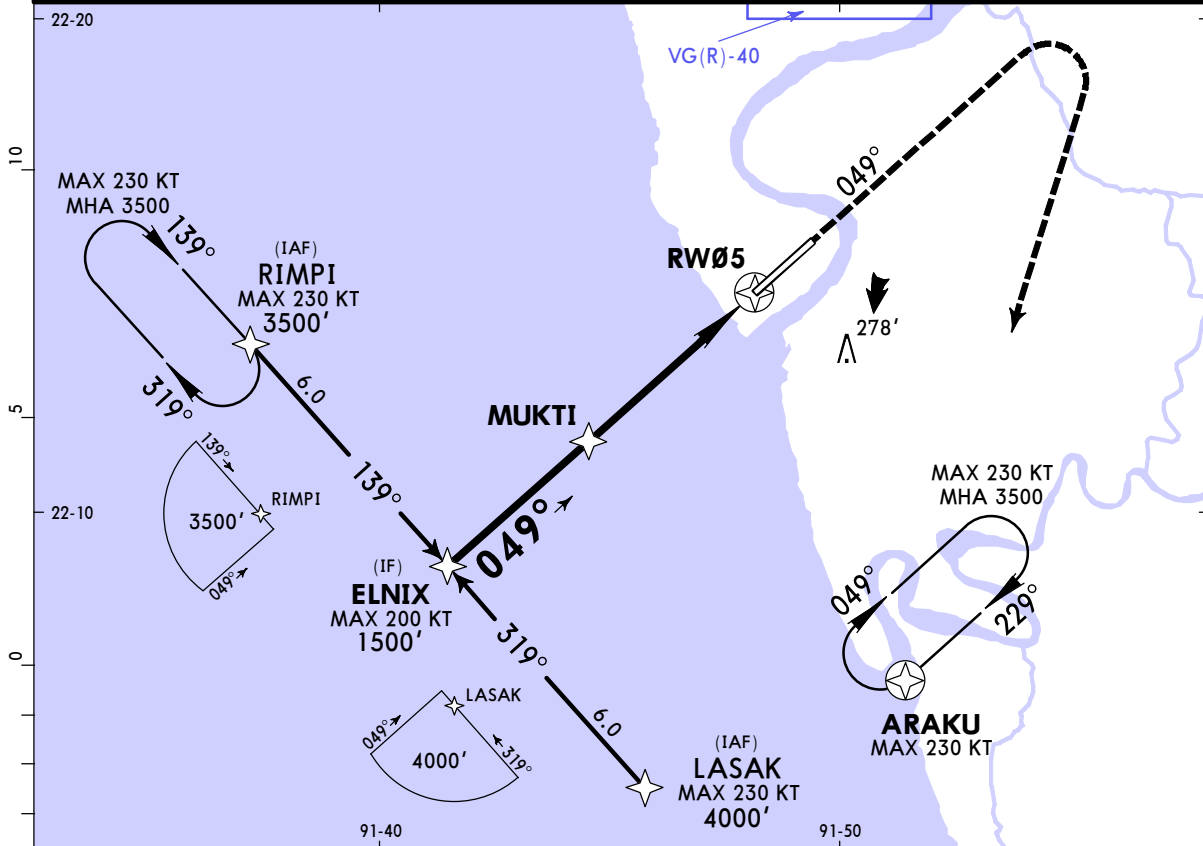
STRAIGHT-IN LANDING RWY 23			
ILS		LOC (GS out)	
DA(H) A: 314' (300')	C: 334' (320')	MDA(H) 430' (416')	
FULL		ALS out	

PANS OPS	A			
	B	RVR 800m	1400m	2400m
	C	VIS 1000m		
	D			

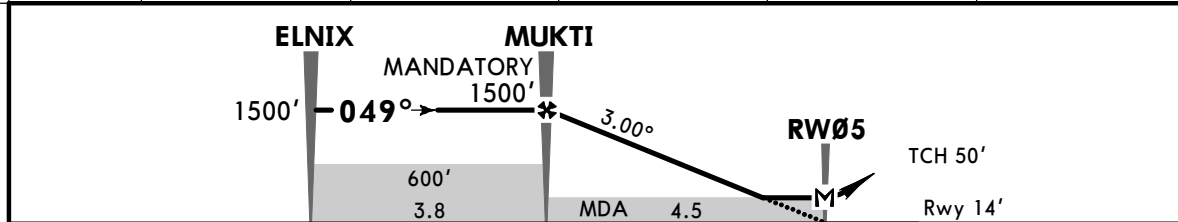
CHANGES: NDB withdrawn.

© JEPPESEN, 2002, 2019. ALL RIGHTS RESERVED.

*D-ATIS 127.6		*CHATTOGRAM Tower (APP/TWR) 118.4		*Ground 121.8	
RNAV	Final Apch Crs 049°	Mandatory Alt MUKTI 1500' (1486')	LNAV/VNAV DA(H) 341' (327')	Apt Elev 14' Rwy 14'	TAA 25 NM IAF
MISSED APCH: Climb on 049° to at or above 1800', then turn RIGHT direct to ARAKU for holding at 3500', or as directed. Do not turn before MAP.					
RNP apch.	Alt Set: hPa	Rwy Elev: 1 hPa	Trans level: FL 60	Trans alt: 4000'	
1. GNSS required. 2. CAUTION: Passing ships with different heights towards south-east and north-east side of rwy. 3. BARO-VNAV not authorized below temperature 0°C.					



DIST to RW05	5.0	4.0	3.0	2.0	1.0
ALTITUDE	1660'	1340'	1020'	710'	390'

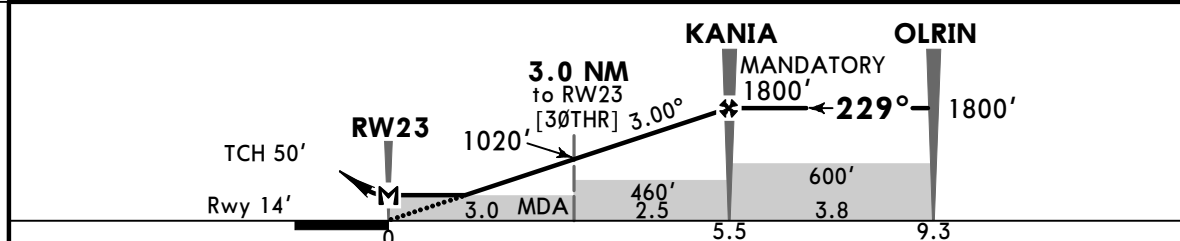
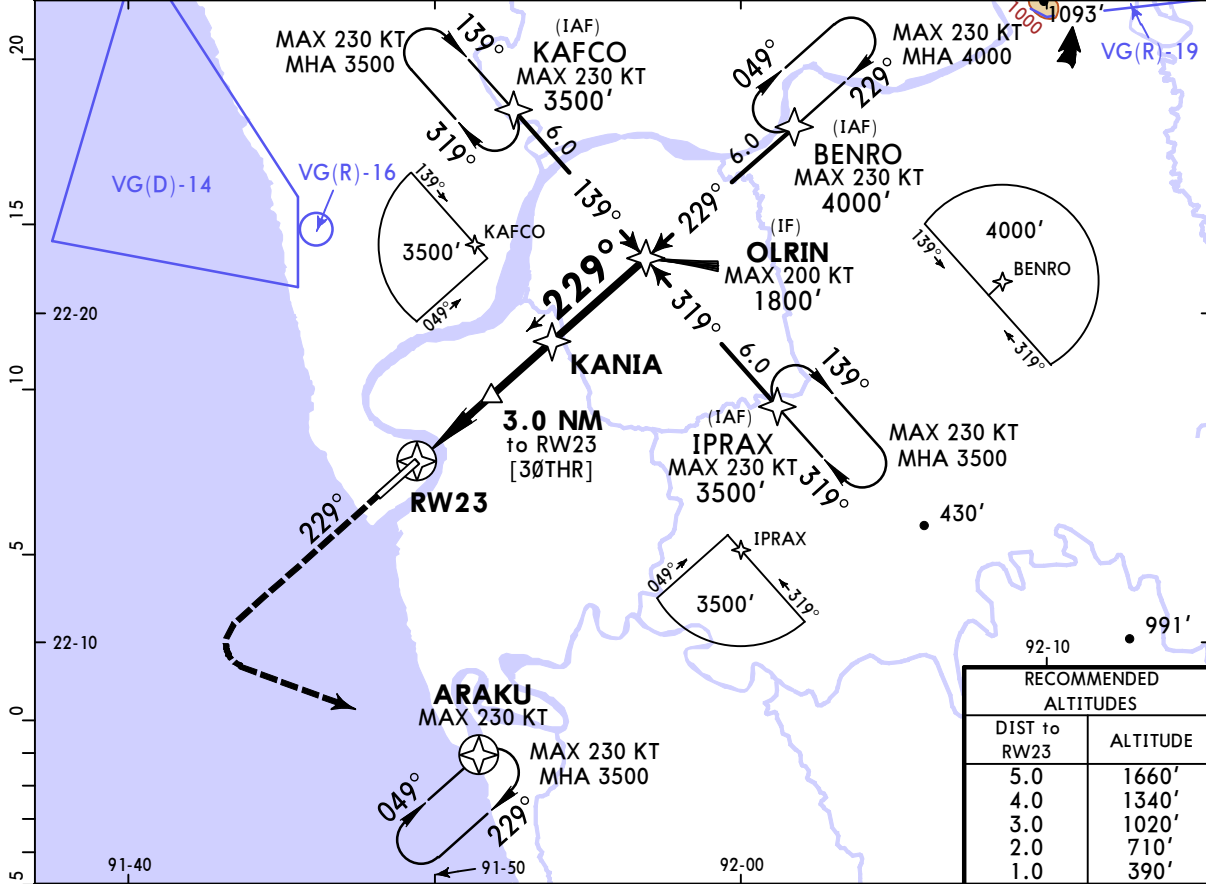


Gnd speed-Kts	70	90	100	120	140	160	ALS PAPI 1800' on 049°
Descent Angle	3.00°	372	478	531	637	849	
LNAV/VNAV: MAP at DA							
LNAV: MAP at RW05							

STRAIGHT-IN LANDING RWY 05			
LNAV/VNAV DA(H) 341' (327')		LNAV MDA(H) 410' (396')	
ALS out		ALS out	
A			
B	RVR 1500m VIS 1600m	2000m	1900m
C			2300m
D			

PANS OPS

*D-ATIS 127.6		*CHATTOGRAM Tower (APP/TWR) 118.4		*Ground 121.8	
RNAV	Final Apch Crs 229°	Mandatory Alt KANIA 1800' (1786')	LNAV/VNAV DA(H) 311' (297')	Apt Elev 14' Rwy 14'	TAA 25 NM IAF
MISSED APCH: Climb on 229° to at or above 1800', then turn LEFT direct to ARAKU for holding at 3500', or as directed. Do not turn before MAP.					
RNP apch.	Alt Set: hPa	Rwy Elev: 1 hPa	Trans level: FL 60	Trans alt: 4000'	
1. GNSS required. 2. CAUTION: Passing ships with different heights towards south-east and north-east side of rwy. 3. VIS might be reduced during APCH on RWY 23 due to occasional smoke from brick fields. 4. BARO-VNAV not authorized below temperature 0°C.					



Gnd speed-Kts	70	90	100	120	140	160	
Descent Angle	3.00°	372	478	531	637	849	
LNAV/VNAV: MAP at DA							
LNAV: MAP at RW23							

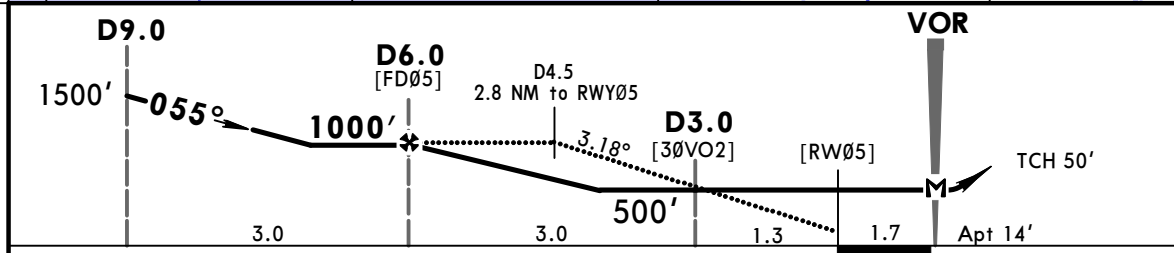
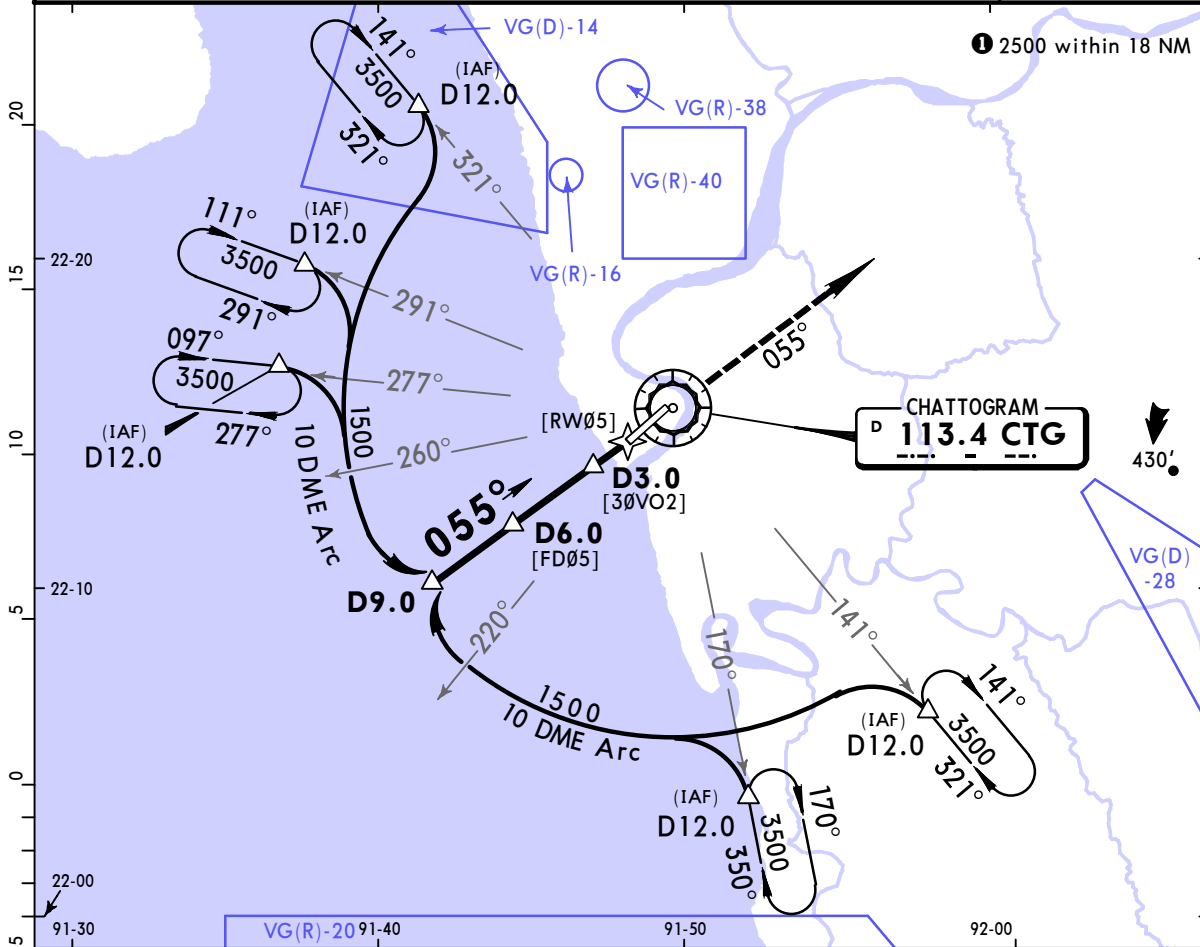
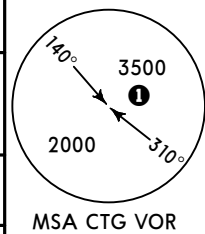
STRAIGHT-IN LANDING RWY 23			
LNAV/VNAV DA(H) 311' (297')		LNAV MDA(H) 400' (386')	
ALS out		ALS out	
A			
B	900m	1800m	2300m
C			
D			

PANS OPS

VGEG/CGP
SHAH AMANAT INTL

JEPPESEN CHATTOGRAM, BANGLADESH
 15 MAR 19 **13-1** **Eff 28 Mar** **VOR DME-ARC Rwy 05**

*D-ATIS 127.6		*CHATTOGRAM Tower (APP/TWR) 118.4		*Ground 121.8	
VOR CTG 113.4	Final Apch Crs 055°	Minimum Alt D6.0 1000' (986')	MDA(H) 500' (486')	Apt Elev 14'	
MISSED APCH: Climb to 2000' on track 055° and contact ATC.					
Alt Set: hPa		Apt Elev: 1 hPa		Trans level: FL 60	
				Trans alt: 4000'	

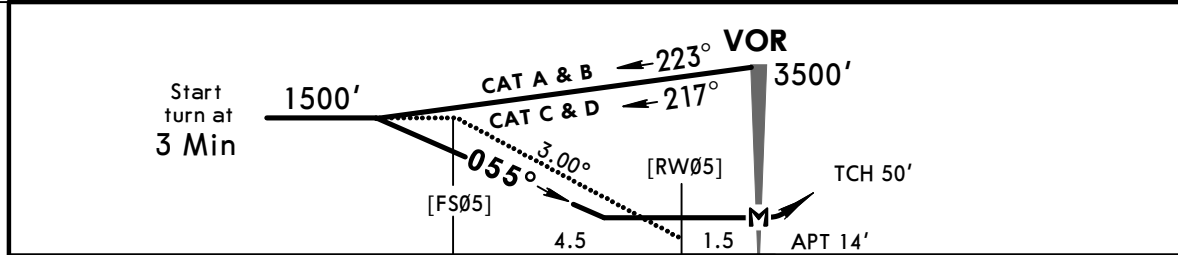
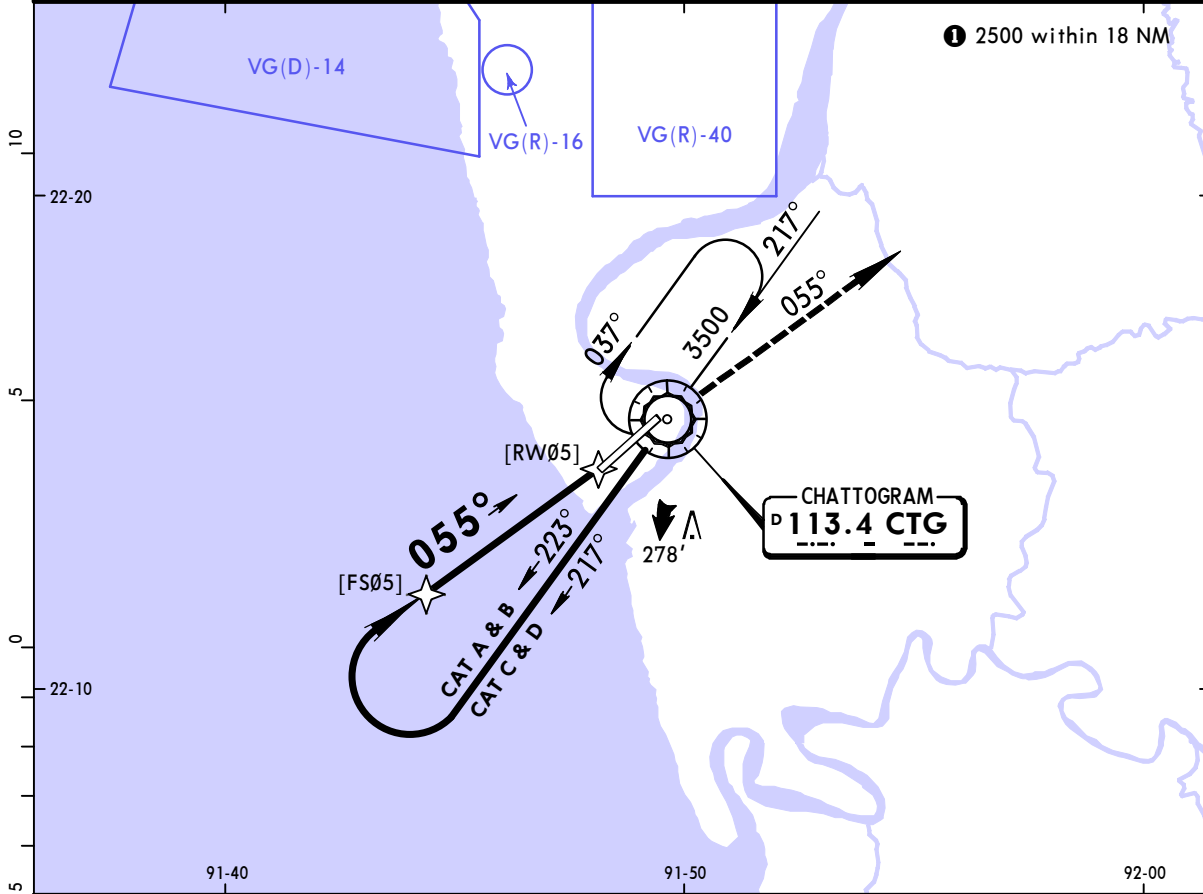
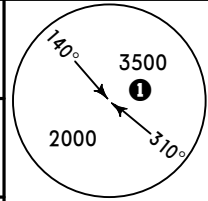


Gnd speed-Kts	70	90	100	120	140	160	ALS PAPI 2000' on 055°
Descent Angle	3.18°	394	506	563	675	788	
MAP at VOR							

STRAIGHT-IN LANDING RWY 05	
MDA(H) 500' (486')	
	ALS out
A	1600m / 2000m
B	2000m / 2400m
C	2800m
D	

PANS OPS

*D-ATIS 127.6		*CHATTOGRAM Tower (APP/TWR) 118.4		*Ground 121.8	
VOR CTG 113.4	Final Apch Crs 055°	Minimum Alt No FAF	MDA(H) 520' (506')	Apt Elev 14'	
MISSED APCH: Climb to 2000' on track 055° and contact ATC.					
Alt Set: hPa		Apt Elev: 1 hPa		Trans level: FL 60	
				Trans alt: 4000'	
MSA CTG VOR					



Gnd Speed-Kts	70	90	100	120	140	160	ALS PAPI 2000' on 055°
Descent Angle 3.00°	372	478	531	637	743	849	
MAP at VOR							

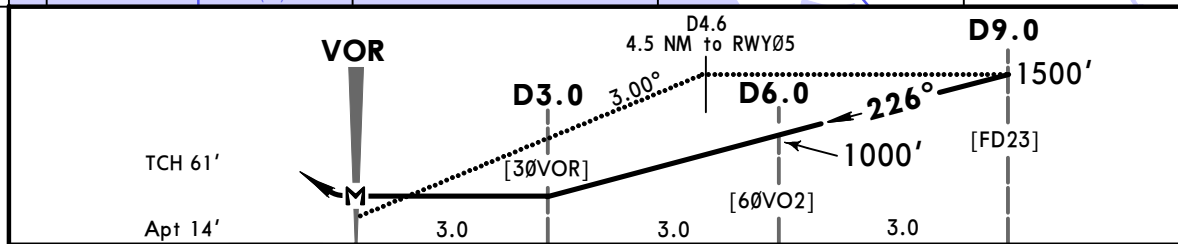
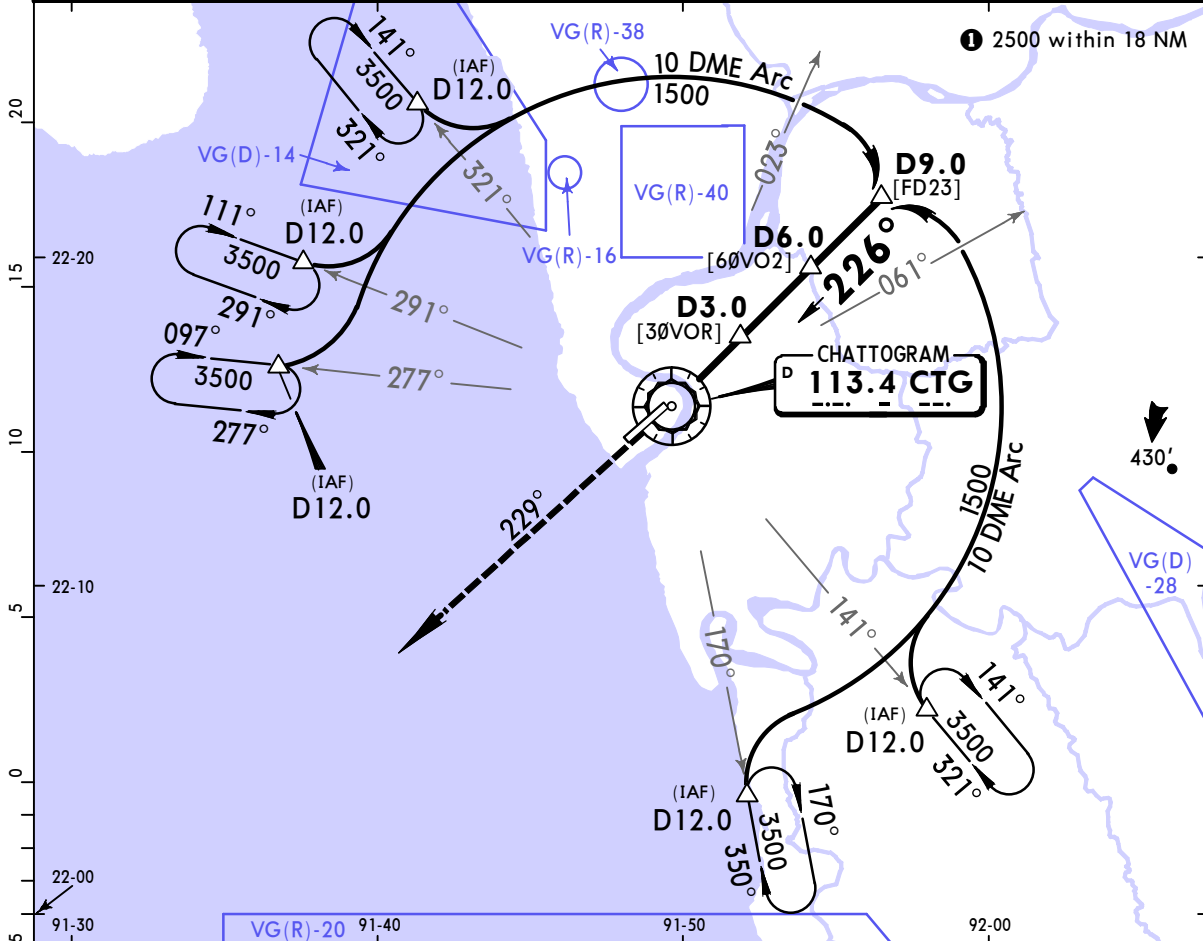
STRAIGHT-IN LANDING RWY 05	
MDA(H) 520' (506')	
	ALS out
A	1600m
B	2000m
C	2800m
D	

PANS OPS

VGEG/CGP
SHAH AMANAT INTL

JEPPESENCHATTOGRAM, BANGLADESH
15 MAR 19 (13-3) Eff 28 Mar **VOR DME-ARC Rwy 23**

*D-ATIS 127.6		*CHATTOGRAM Tower (APP/TWR) 118.4		*Ground 121.8	
VOR CTG 113.4	Final Apch Crs 226°	Minimum Alt D6.0 1000' (986')	MDA(H) 520' (506')	Apt Elev 14'	
MISSED APCH: Climb to 2000' on track 229° and contact ATC.					
Alt Set: hPa		Apt Elev: 1 hPa		Trans level: FL 60	
CAUTION: 1. Passing ships at the APCH area with mast heights up to 150'. 2. VIS might be reduced during APCH on RWY 23 due to occasional smoke from brick fields.		Trans alt: 4000'		MSA CTG VOR	

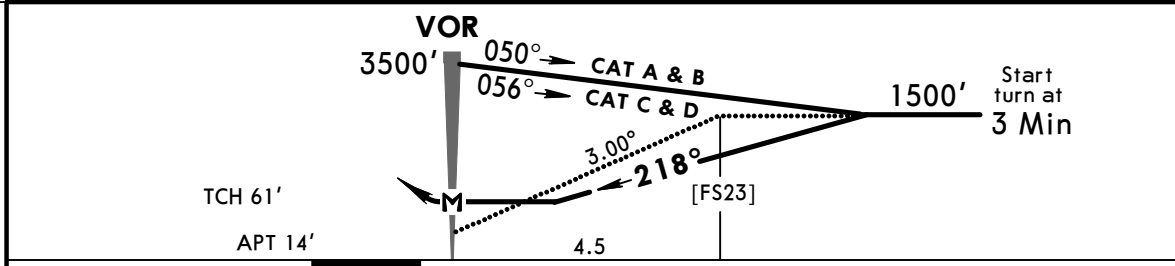
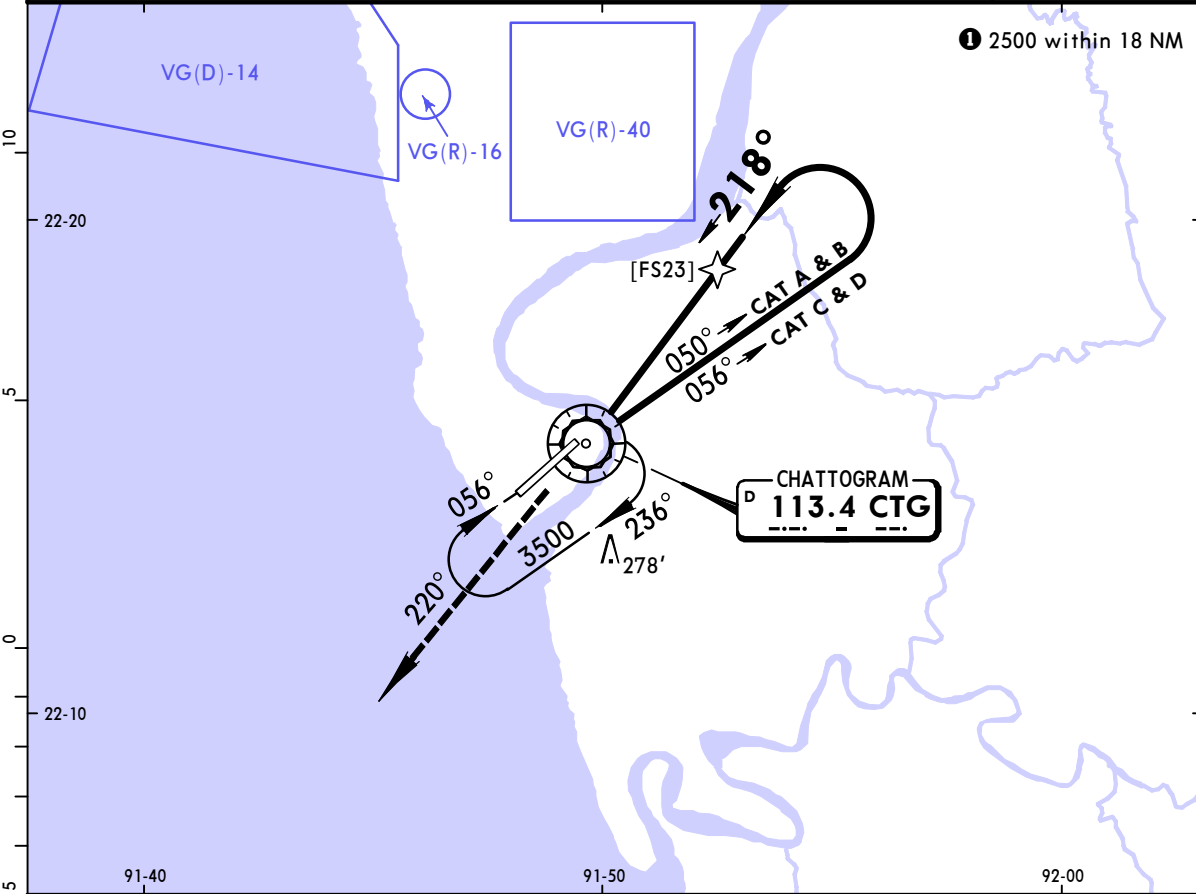
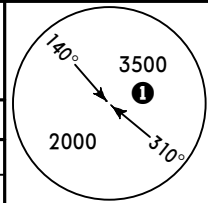


Gnd speed-Kts	70	90	100	120	140	160	HIALS PAPI	2000' on 229°
Descent Angle 3.00°	372	478	531	637	743	849		
MAP at VOR								

STRAIGHT-IN LANDING RWY 23	
MDA(H) 520' (506')	
	ALS out
A	1600m / 2000m
B	2000m / 2400m
C	2400m / 2800m
D	

PANS OPS

*D-ATIS 127.6		*CHATTOGRAM Tower (APP/TWR) 118.4		*Ground 121.8	
VOR CTG 113.4	Final Apch Crs 218°	Minimum Alt No FAF	MDA(H) 520' (506')	Apt Elev 14'	
MISSED APCH: Climb to 1500' on track 220° and contact ATC.					
Alt Set: hPa		Apt Elev: 1 hPa		Trans level: FL 60	
				Trans alt: 4000'	
CAUTION: 1. Passing ships at the APCH area with mast heights up to 150'. 2. VIS might be reduced during APCH on RWY 23 due to occasional smoke from brick fields.					
					MSA CTG VOR



Gnd speed-Kts	70	90	100	120	140	160	
Descent Angle 3.00°	372	478	531	637	743	849	
MAP at VOR							

STRAIGHT-IN LANDING RWY 23		
MDA(H) 520' (506')		
		ALS out
A	1600m	2000m
B	2000m	2400m
C		
D	2400m	2800m

PANS OPS

Chart changes since cycle 21-2020

ADD = added chart, REV = revised chart, DEL = deleted chart.

ACT PROCEDURE IDENT

INDEX

REV DATE

EFF DATE

CHATTOGRAM, (SHAH AMANAT INTL - VGEG)

TERMINAL CHART CHANGE NOTICES

No Chart Change Notices for Airport VGEG