

## List of pages

Trip Kit Index

Airport Information For VGIS

Terminal Charts For VGIS

Revision Letter For Cycle 12-2021

Change Notices

Notebook

## General Information

Location: ISHURDI BGD  
ICAO/IATA: VGIS / IRD  
Lat/Long: N24° 09.2', E089° 03.0'  
Elevation: 45 ft

Airport Use: Public  
Daylight Savings: Not Observed  
UTC Conversion: -6:00 = UTC  
Magnetic Variation: 1.0° W

Customs: No  
Airport Type: IFR  
Landing Fee: No  
Control Tower: No  
Jet Start Unit: No  
LLWS Alert: No  
Beacon: No

Sunrise: 2329 Z  
Sunset: 1251 Z

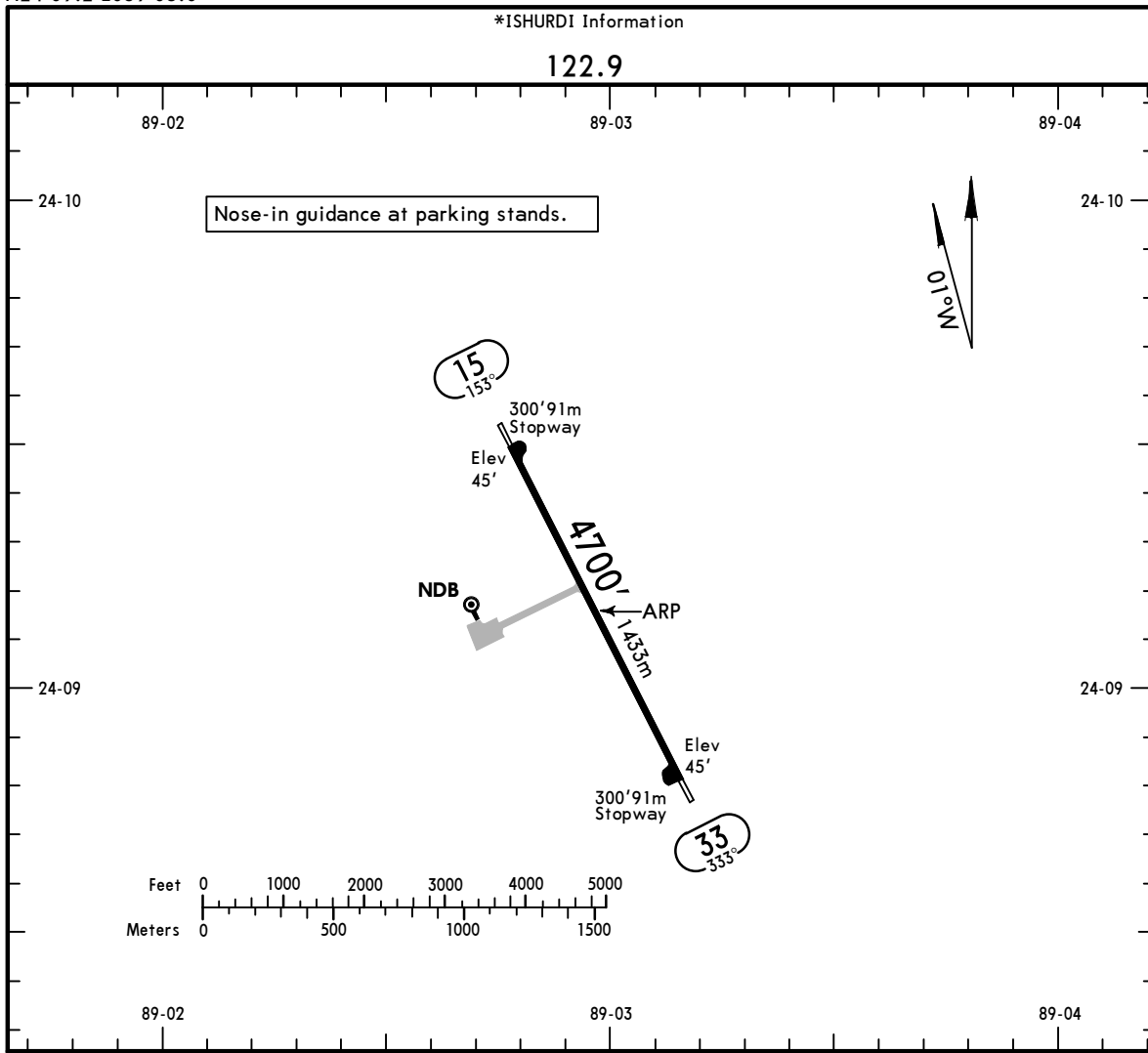
## Runway Information

Runway: 15  
Length x Width: 4701 ft x 75 ft  
Surface Type: bitu  
TDZ-Elev: 45 ft  
Stopway: 299 ft

Runway: 33  
Length x Width: 4701 ft x 75 ft  
Surface Type: bitu  
TDZ-Elev: 45 ft  
Stopway: 299 ft

## Communication Information

Ishurdi Information: 122.900



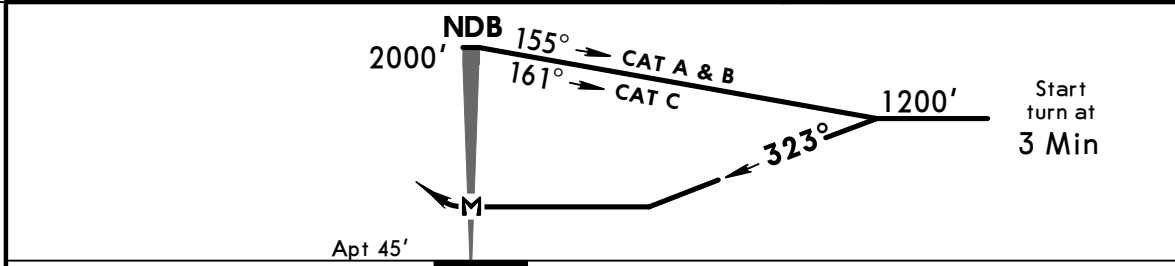
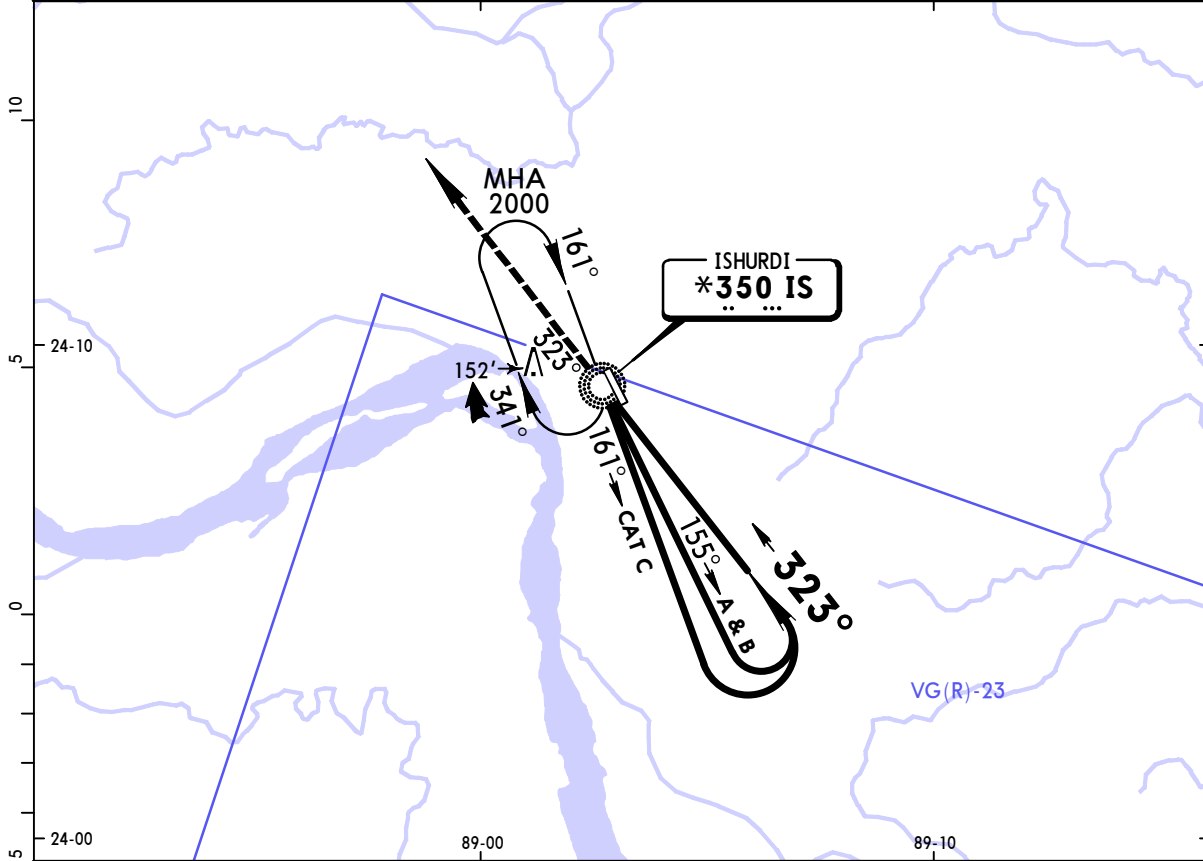
ADDITIONAL RUNWAY INFORMATION

RWY	USABLE LENGTHS			WIDTH
	Threshold	LANDING BEYOND Glide Slope	TAKE-OFF	
15 33				75' 23m

TAKE-OFF	
AIR CARRIER (JAA)	
All Rwys	
<b>LVP must be in force</b> RCLM (DAY only) or RL	RCLM (DAY only) or RL
A	
B	250m
C	400m
D	NOT APPLICABLE



*ISHURDI Information						
122.9						
BRIEFING STRIP™	NDB IS <b>*350</b>	Final Apch Crs <b>323°</b>	Minimum Alt No FAF	MDA(H) <b>450'</b> (405')	Apt Elev 45'	2000  MSA IS NDB
	MISSED APCH: Climb on track 323° to 2000' and contact ATC.					
	Alt Set: hPa		Apt Elev: 2 hPa	Trans level: FL 60	Trans alt: 4000'	
Procedure based on 120 KT TAS (still air).						



	2000' on 323°
MAP at NDB	

STRAIGHT-IN LANDING RWY 33	
MDA(H) <b>450'</b> (405')	
A	2000m
B	2400m
C	2800m
D	NOT APPLICABLE

PANS OPS

## Chart changes since cycle 11-2021

ADD = added chart, REV = revised chart, DEL = deleted chart.

ACT	PROCEDURE IDENT	INDEX	REV DATE	EFF DATE
-----	-----------------	-------	----------	----------

ISHURDI, (ISHURDI - VGIS)

## TERMINAL CHART CHANGE NOTICES

### No Chart Change Notices for Airport VGIS