

List of pages

Index

Airport Information For VGJR

Terminal Charts For VGJR

Revision Letter For Cycle 12-2021

Change Notices

Notebook

General Information

Location: JASHORE BGD
ICAO/IATA: VGJR / JSR
Lat/Long: N23° 11.0', E089° 09.7'
Elevation: 20 ft

Airport Use: Public
Daylight Savings: Not Observed
UTC Conversion: -6:00 = UTC
Magnetic Variation: 1.0° W

Customs: Yes
Airport Type: IFR
Landing Fee: Yes
Control Tower: Yes
Jet Start Unit: No
LLWS Alert: No
Beacon: Yes

Sunrise: 2331 Z
Sunset: 1249 Z

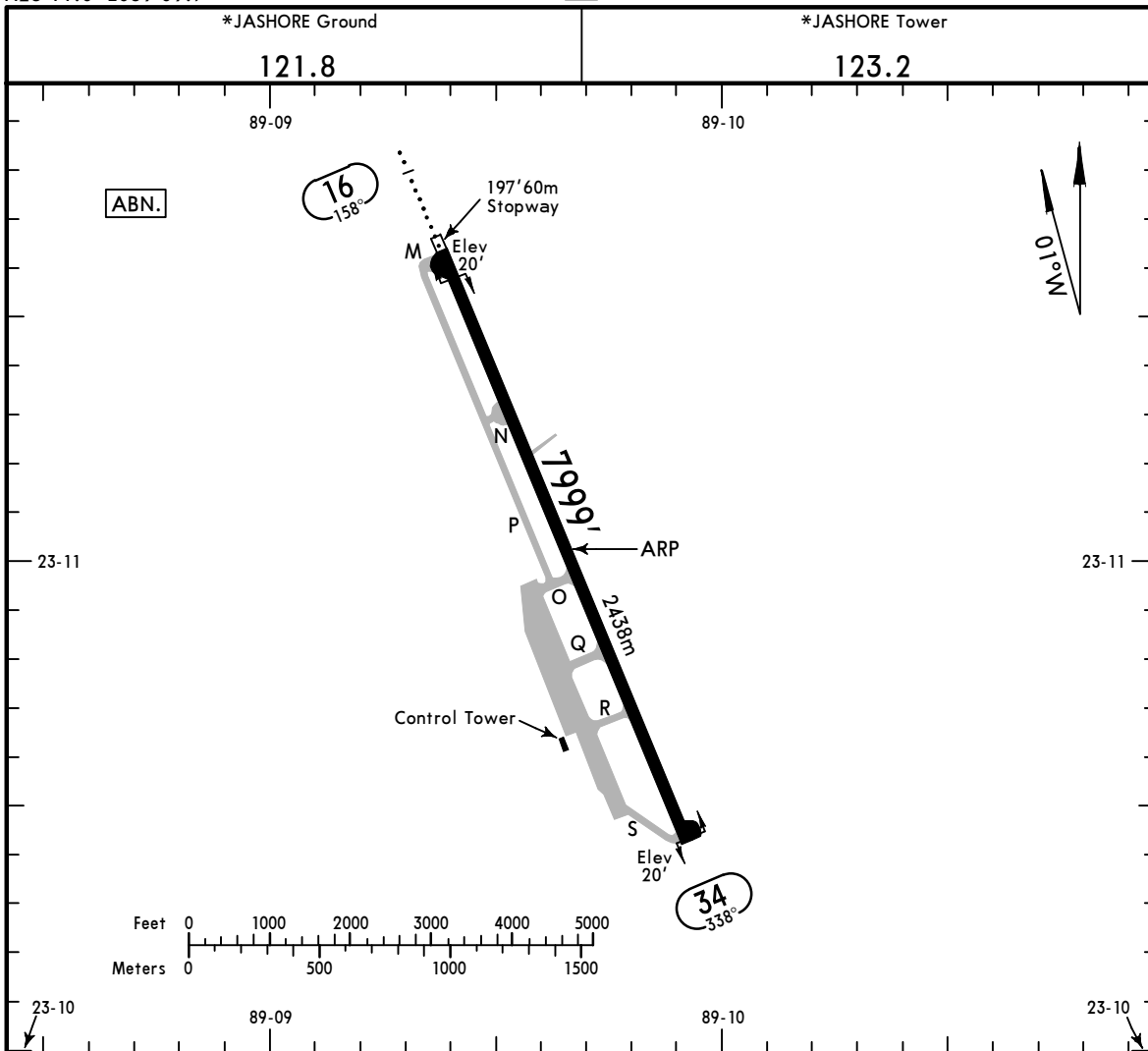
Runway Information

Runway: 16
Length x Width: 7999 ft x 148 ft
Surface Type: bitu
TDZ-Elev: 20 ft
Lighting: Edge, ALS

Runway: 34
Length x Width: 7999 ft x 148 ft
Surface Type: bitu
TDZ-Elev: 20 ft
Lighting: Edge
Stopway: 197 ft

Communication Information

Jashore Tower: 123.200
Jashore Tower: 123.900 Secondary
Jashore Ground: 121.800

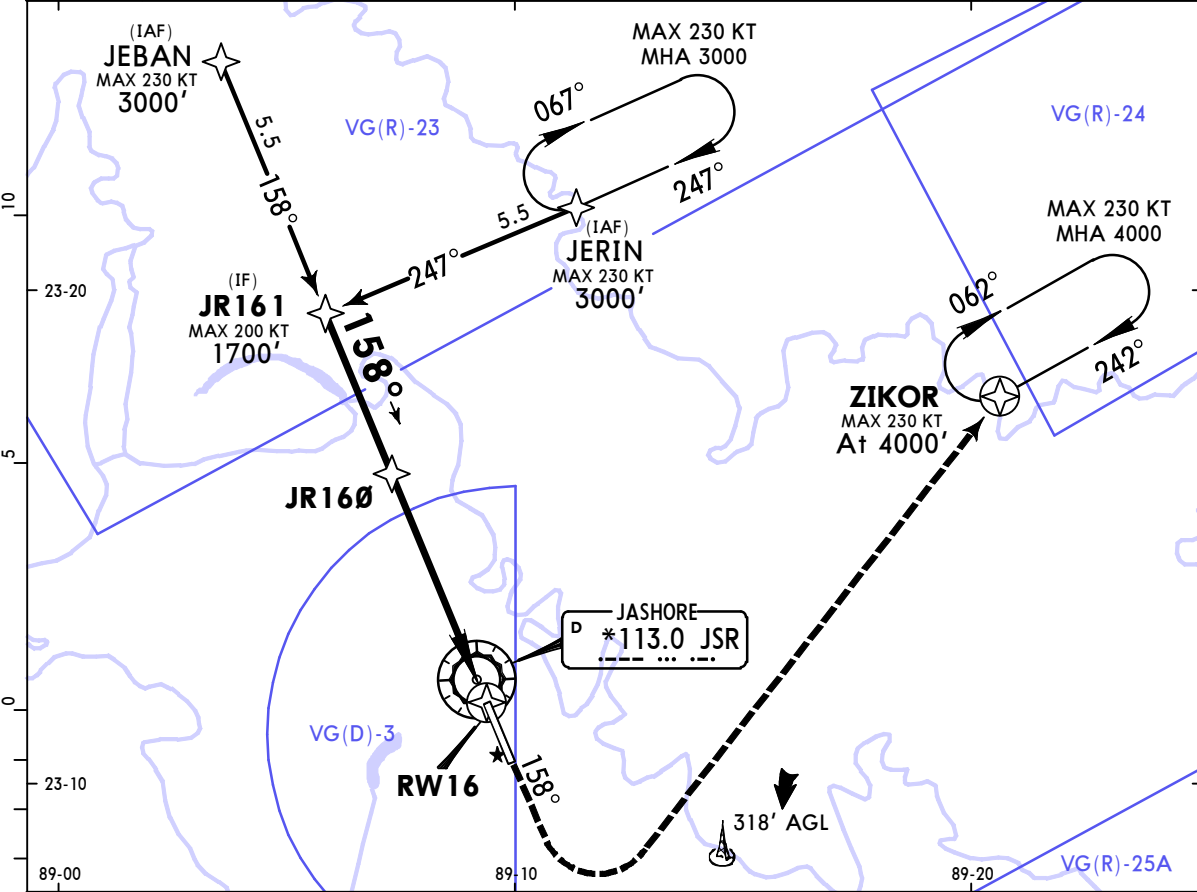


ADDITIONAL RUNWAY INFORMATION

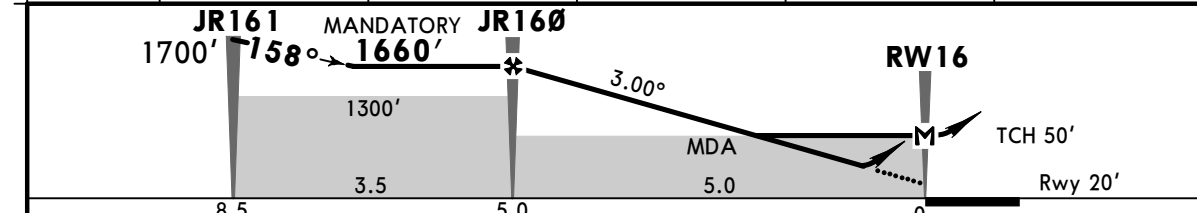
RWY	ALS	PAPI-L	USABLE LENGTHS		TAKE-OFF	WIDTH
			Threshold	Glide Slope		
16	RL (60m)	PAPI-L				148'
34	RL (60m)	PAPI-L				45m

TAKE-OFF	
AIR CARRIER (JAA)	
All Rwys	
LVP must be in force RCLM (DAY only) or RL	RCLM (DAY only) or RL
250m	400m
NOT APPLICABLE	
A	
B	
C	
D	

*JASHORE Tower				*JASHORE Ground	
123.2				121.8	
RNAV	Final ApcH Crs 158°	JR160 MANDATORY 1660' (1640')	LNAV/VNAV DA(H) 310' (290')	Apt Elev 20' Rwy 20'	2000
MISSED APCH: Climb on 158° to 1200', then turn LEFT direct to ZIKOR to join holding at 4000', or as directed. Do not turn before MAP. MAX 230 KT.					
Alt Set: hPa	Rwy Elev: 1 hPa	Trans level: FL 60	Trans alt: 4000'		
RNP apch	1. GNSS required. 2. Baro-VNAV not authorized below 0°C.				MSA JSR VOR

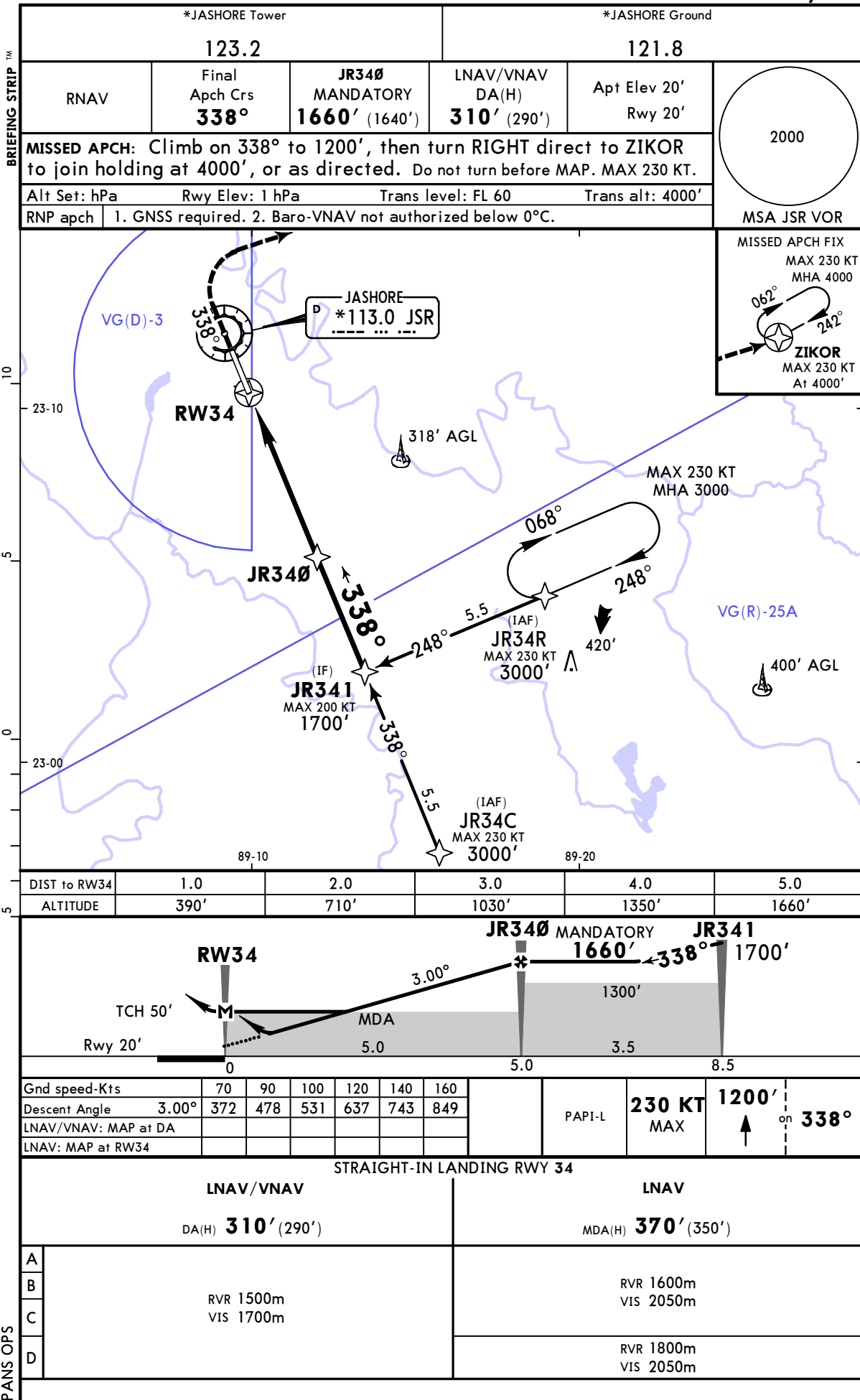


DIST to RW16	5.0	4.0	3.0	2.0	1.0
ALTITUDE	1660'	1350'	1030'	710'	390'



Gnd speed-Kts	70	90	100	120	140	160	ALS PAPI 230 KT MAX 1200' on 158°
Descent Angle	3.00°	372	478	531	637	743	
LNAV/VNAV: MAP at DA							
LNAV: MAP at RW16							

STRAIGHT-IN LANDING RWY 16			
LNAV/VNAV DA(H) 310' (290')		LNAV MDA(H) 320' (300')	
ALS out		ALS out	
A			
B	RVR 1500m VIS 1600m	RVR 1500m VIS 1700m	RVR 1500m VIS 1600m
C			
D			

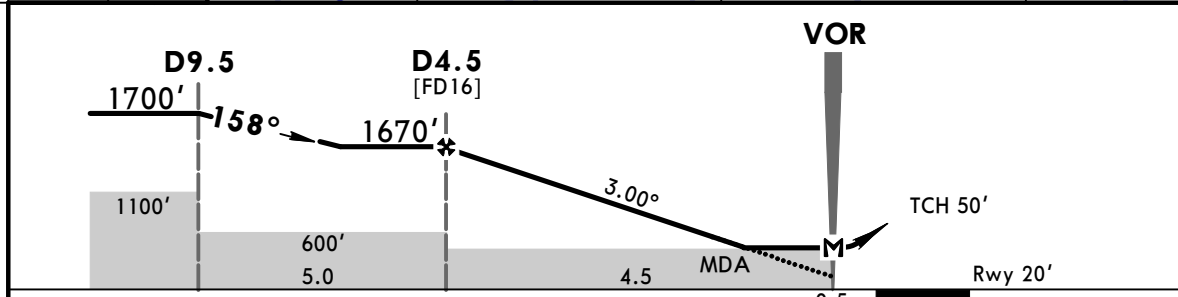
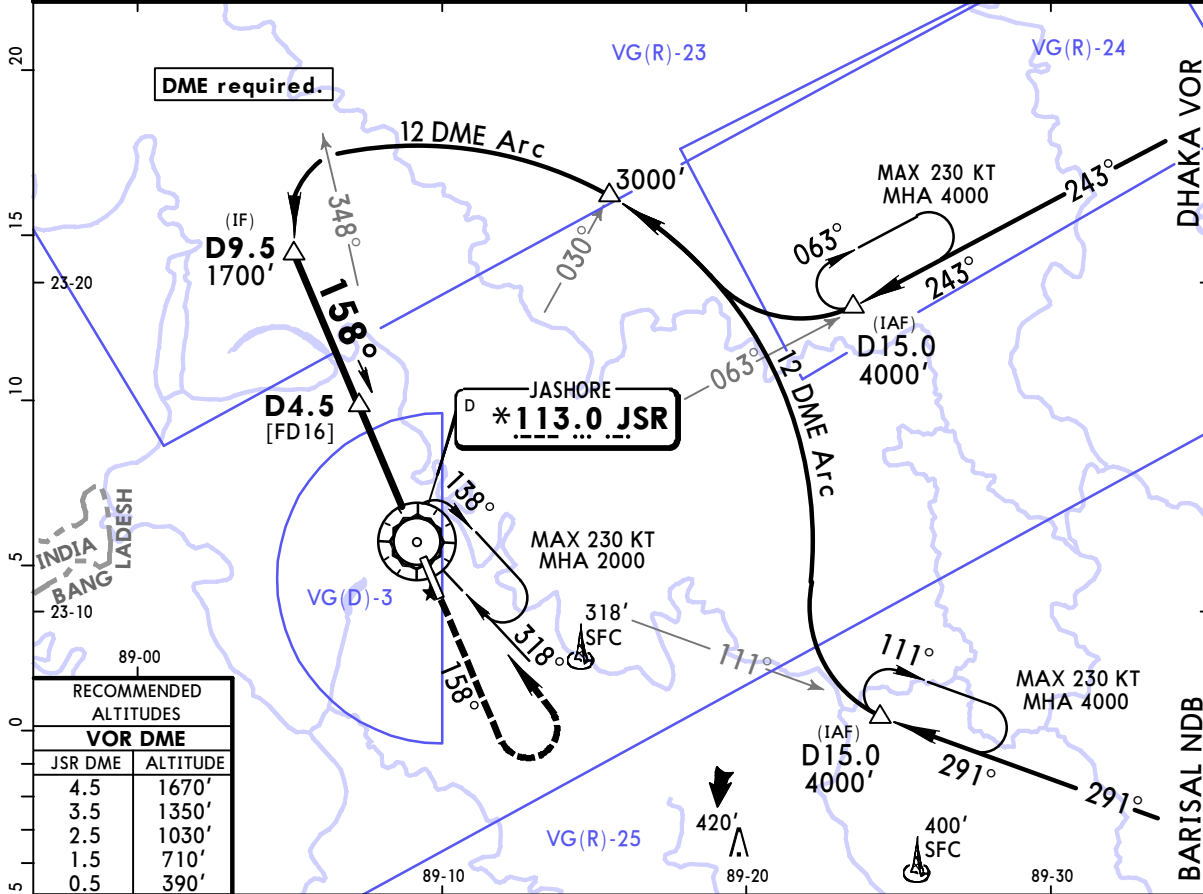


VGJR/JSR
JASHORE

JEPPESEN
15 FEB 19
Eff 28 Feb **(13-1)**

JASHORE, BANGLADESH
VOR Z Rwy 16

*JASHORE Tower			*JASHORE Ground		
123.2			121.8		
VOR JSR *113.0	Final Apch Crs 158°	Procedure Alt D4.5 1670' (1650')	MDA(H) 320' (300')	Apt Elev 20' Rwy 20'	2000
MISSED APCH: Climb on 158° to 1500', then turn LEFT, climb to 2000' and proceed DIRECT to VOR for holding or as directed by ATC. Do not turn before MAP.					
Alt Set: hPa	Apt Elev: 1 hPa	Trans level: FL 60	Trans alt: 4000'	MSA JSR VOR	



Gnd speed-Kts	70	90	100	120	140	160	ALS	1500'	on 158°
Descent Angle 3.00°	372	478	531	637	743	849			
MAP at VOR							PAPI		

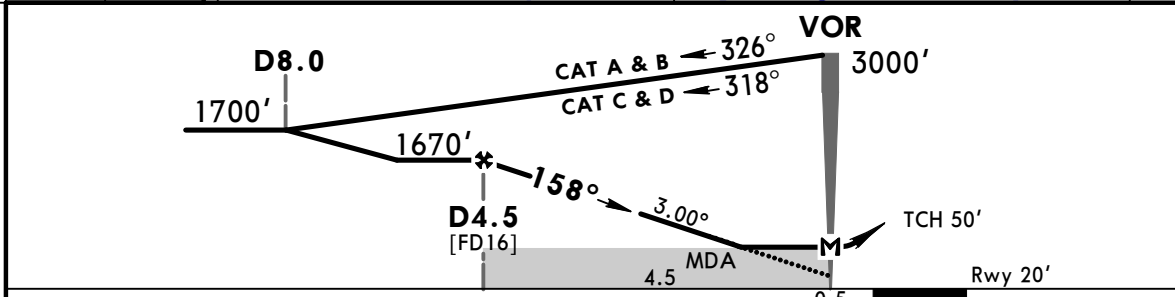
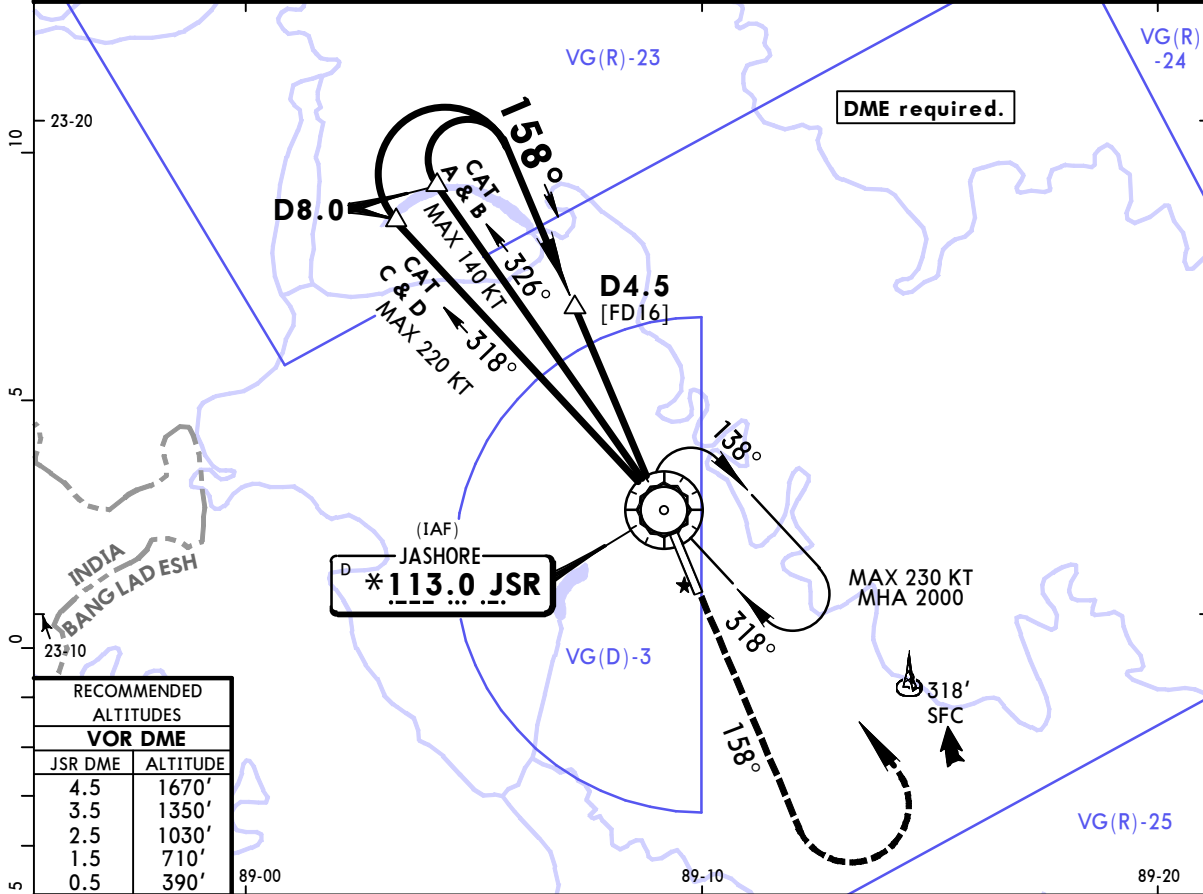
STRAIGHT-IN LANDING RWY 16	
MDA(H) 320' (300')	
ALS out	
A	
B	
C	RVR 1200m VIS 1500m
D	RVR 1400m VIS 1800m

VGJR/JSR
JASHORE

JEPPESSEN
15 FEB 19
Eff 28 Feb (13-2)

JASHORE, BANGLADESH
VOR Y Rwy 16

*JASHORE Tower				*JASHORE Ground	
123.2				121.8	
VOR JSR *113.0	Final Apch Crs 158°	Procedure Alt D4.5 1670' (1650')	MDA(H) 320' (300')	Apt Elev 20' Rwy 20'	2000
MISSED APCH: Climb on 158° to 1500', then turn LEFT, climb to 2000' and proceed DIRECT to VOR for holding or as directed by ATC. Do not turn before MAP.					
Alt Set: hPa	Apt Elev: 1 hPa	Trans level: FL 60	Trans alt: 4000'	MSA JSR VOR	



Gnd speed-Kts	70	90	100	120	140	160	ALS PAPI	1500' ↑ on 158°
Descent Angle 3.00°	372	478	531	637	743	849		
MAP at VOR								

STRAIGHT-IN LANDING RWY 16	
MDA(H) 320' (300')	
ALS out	
A	
B	
C	RVR 1200m VIS 1500m
D	RVR 1400m VIS 1800m

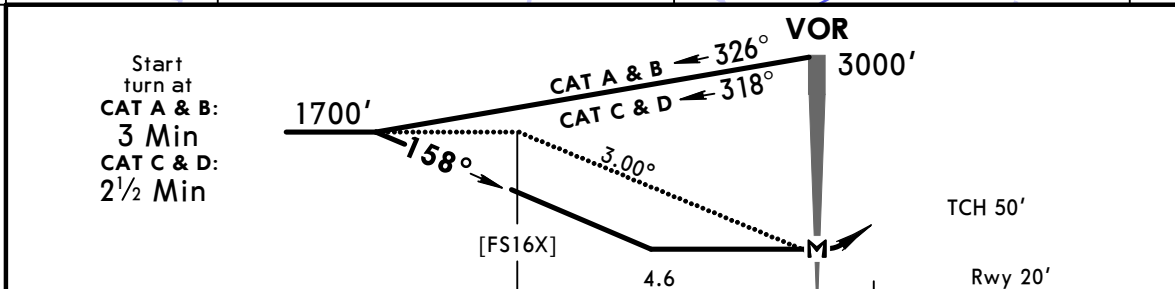
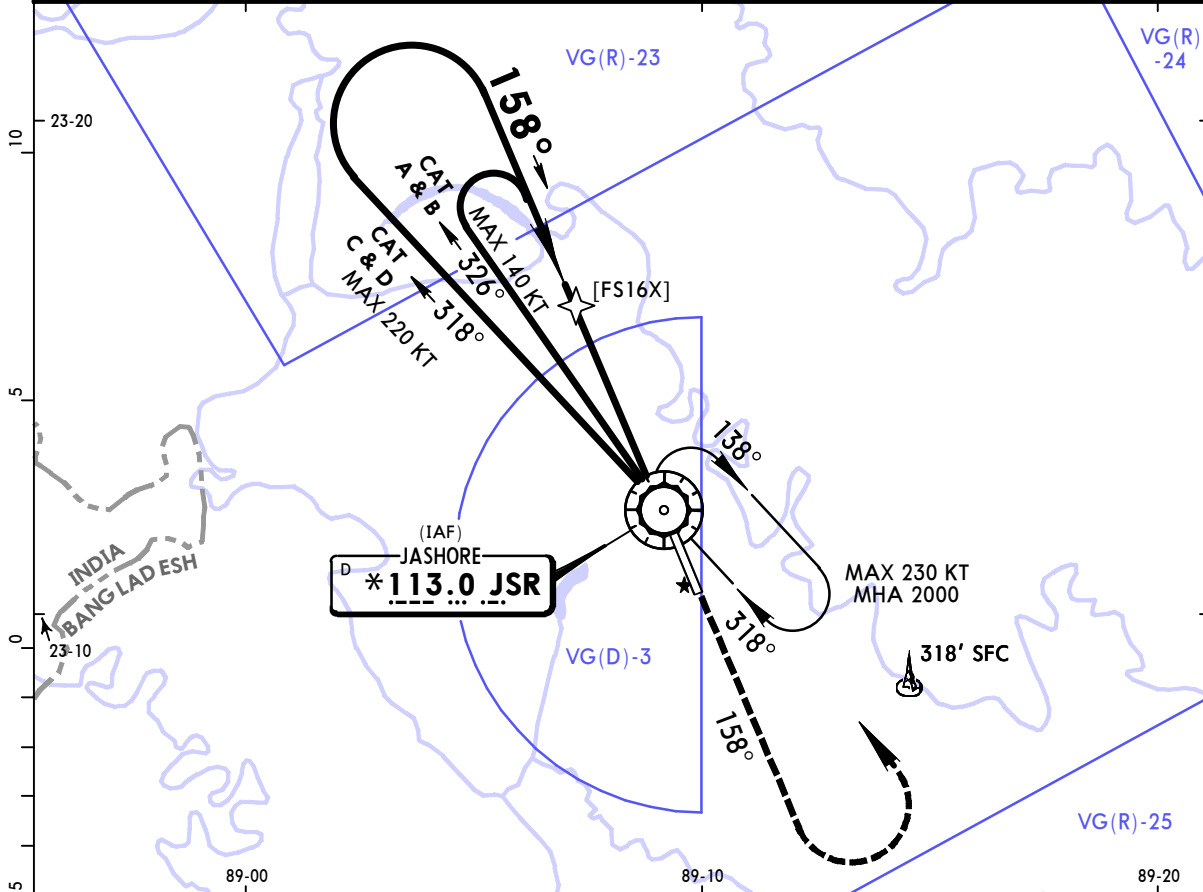
PANS OPS

VGJR/JSR
JASHORE

JEPPESSEN
15 FEB 19
Eff 28 Feb (13-3)

JASHORE, BANGLADESH
VOR X Rwy 16

*JASHORE Tower			*JASHORE Ground		
123.2			121.8		
VOR JSR *113.0	Final Apch Crs 158°	No FAF	MDA(H) 350' (330')	Apt Elev 20' Rwy 20'	2000
MISSED APCH: Climb on 158° to 1500', then turn LEFT, climb to 2000' and proceed DIRECT to VOR for holding or as directed by ATC. Do not turn before MAP.					
Alt Set: hPa	Apt Elev: 1 hPa	Trans level: FL 60	Trans alt: 4000'	MSA JSR VOR	



Gnd speed-Kts	70	90	100	120	140	160	ALS PAPI	1500' ↑ on 158°
Descent Angle 3.00°	372	478	531	637	743	849		
MAP at VOR								

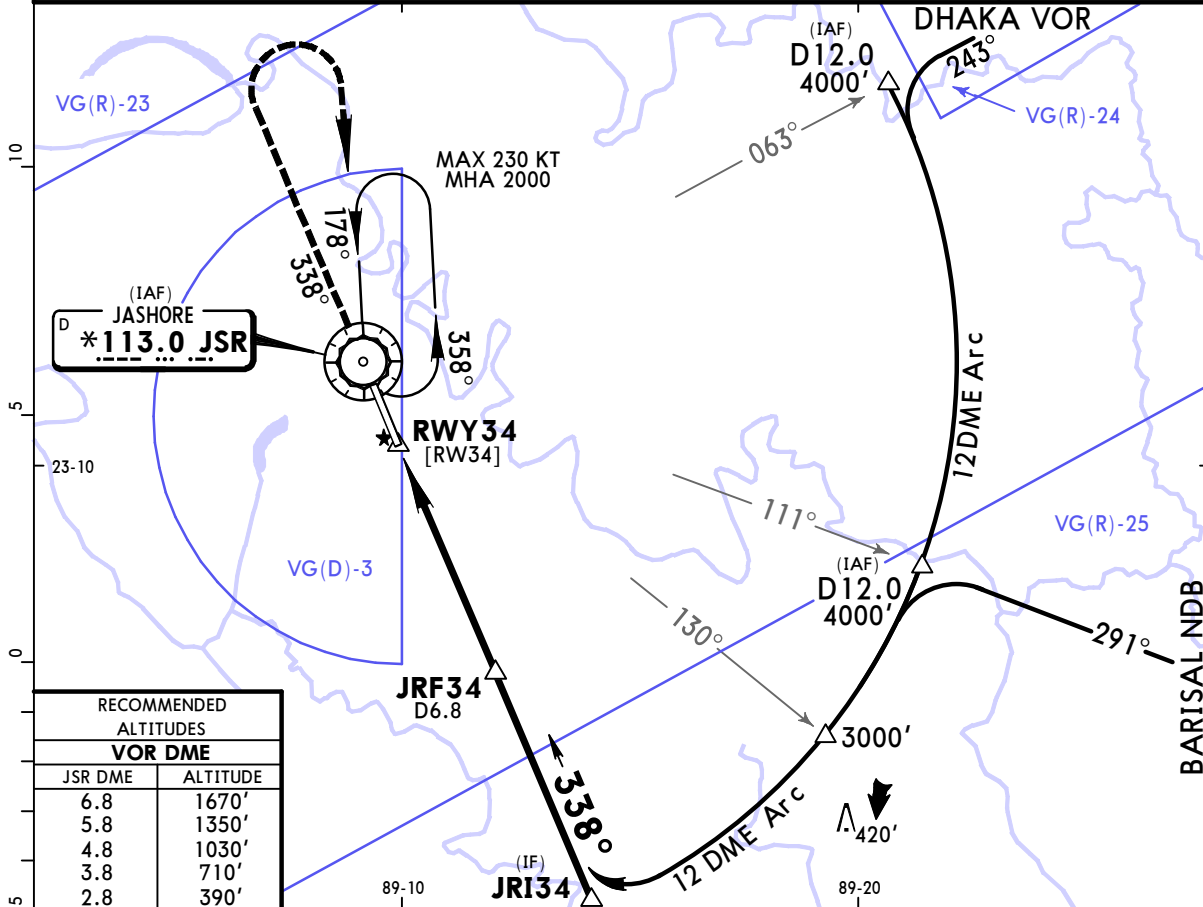
STRAIGHT-IN LANDING RWY 16		ALS out	
MDA(H) 350' (330')			
A			
B			
C	RVR 1300m VIS 1700m	RVR 1500m VIS 2000m	
D			

PANS OPS

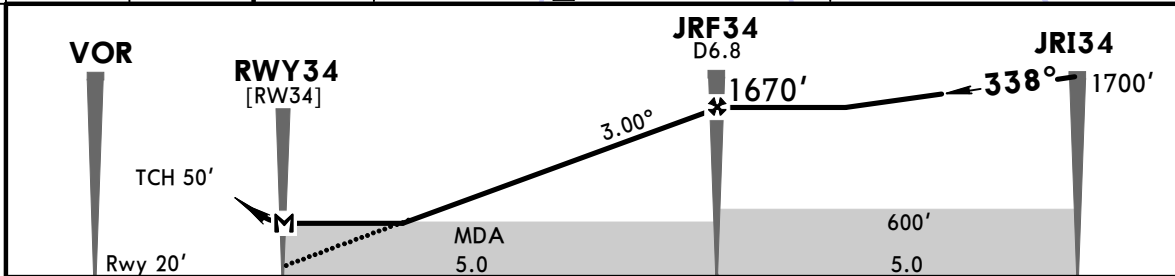
CHANGES: Location name.

© JEPPESSEN, 2018, 2019. ALL RIGHTS RESERVED.

*JASHORE Tower 123.2			*JASHORE Ground 121.8		
VOR JSR *113.0	Final Apch Crs 338°	Procedure Alt JRF34 1670' (1650')	MDA(H) 380' (360')	Apt Elev 20' Rwy 20'	2000 MSA JSR VOR
MISSED APCH: Climb on 338° to 1500', then turn RIGHT, climb to 2000' and proceed DIRECT to VOR for holding or as directed by ATC. Do not turn before MAP.					
Alt Set: hPa	Rwy Elev: 1 hPa	Trans level: FL 60	Trans alt: 4000'		
DME required.					



RECOMMENDED ALTITUDES	
VOR DME	
JSR DME	ALTITUDE
6.8	1670'
5.8	1350'
4.8	1030'
3.8	710'
2.8	390'

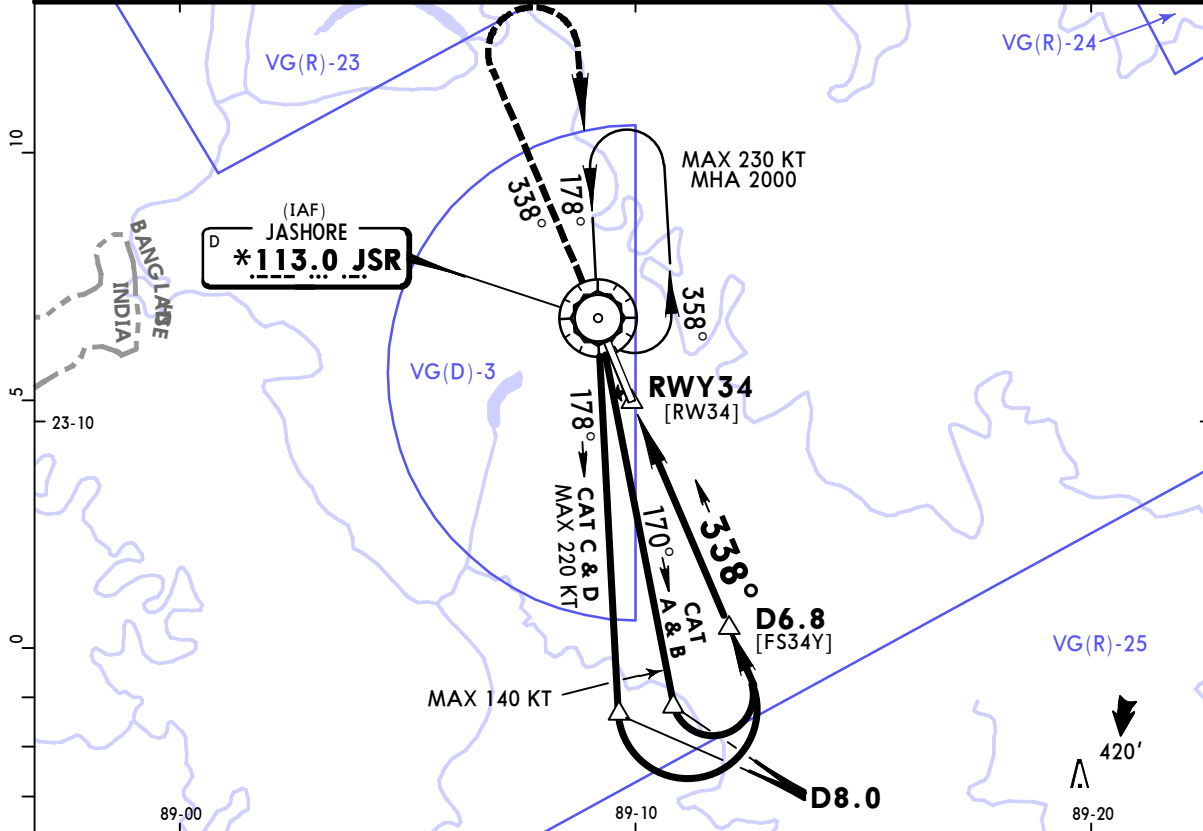


Gnd speed-Kts	70	90	100	120	140	160	PAPI-L 1500' on 338°
Descent Angle 3.00°	372	478	531	637	743	849	
MAP at RWY34							

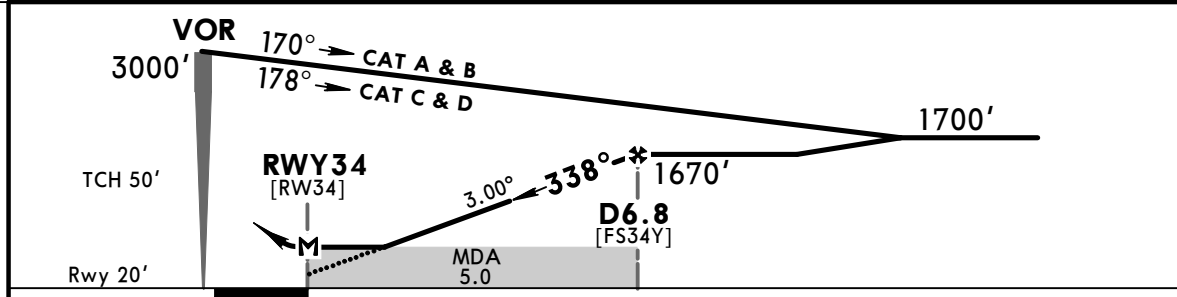
STRAIGHT-IN LANDING RWY 34	
MDA(H) 380' (360')	

A	RVR 1700m VIS 2100m
B	
C	
D	

*JASHORE Tower 123.2				*JASHORE Ground 121.8	
VOR JSR *113.0	Final Apch Crs 338°	Procedure Alt D6.8 1670' (1650')	MDA(H) 380' (360')	Apt Elev 20' Rwy 20'	2000 MSA JSR VOR
MISSED APCH: Climb on 338° to 1500', then turn RIGHT, climb to 2000' and proceed DIRECT to VOR for holding or as directed by ATC. Do not turn before MAP.					
Alt Set: hPa	Rwy Elev: 1 hPa	Trans level: FL 60	Trans alt: 4000'		
DME required.					



VOR DME	JSR DME	2.8	3.8	4.8	5.8	6.8
	ALTITUDE	390'	710'	1030'	1350'	1670'



Gnd speed-Kts	70	90	100	120	140	160		
Descent Angle 3.00°	372	478	531	637	743	849		
MAP at RWY34								

STRAIGHT-IN LANDING RWY 34		
MDA(H) 380' (360')		

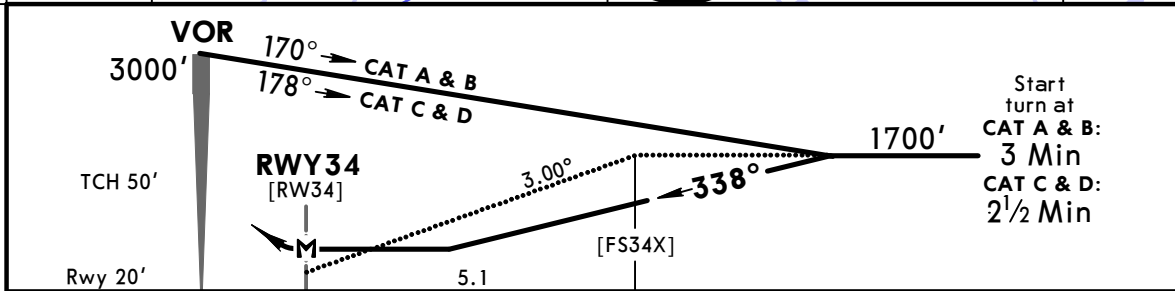
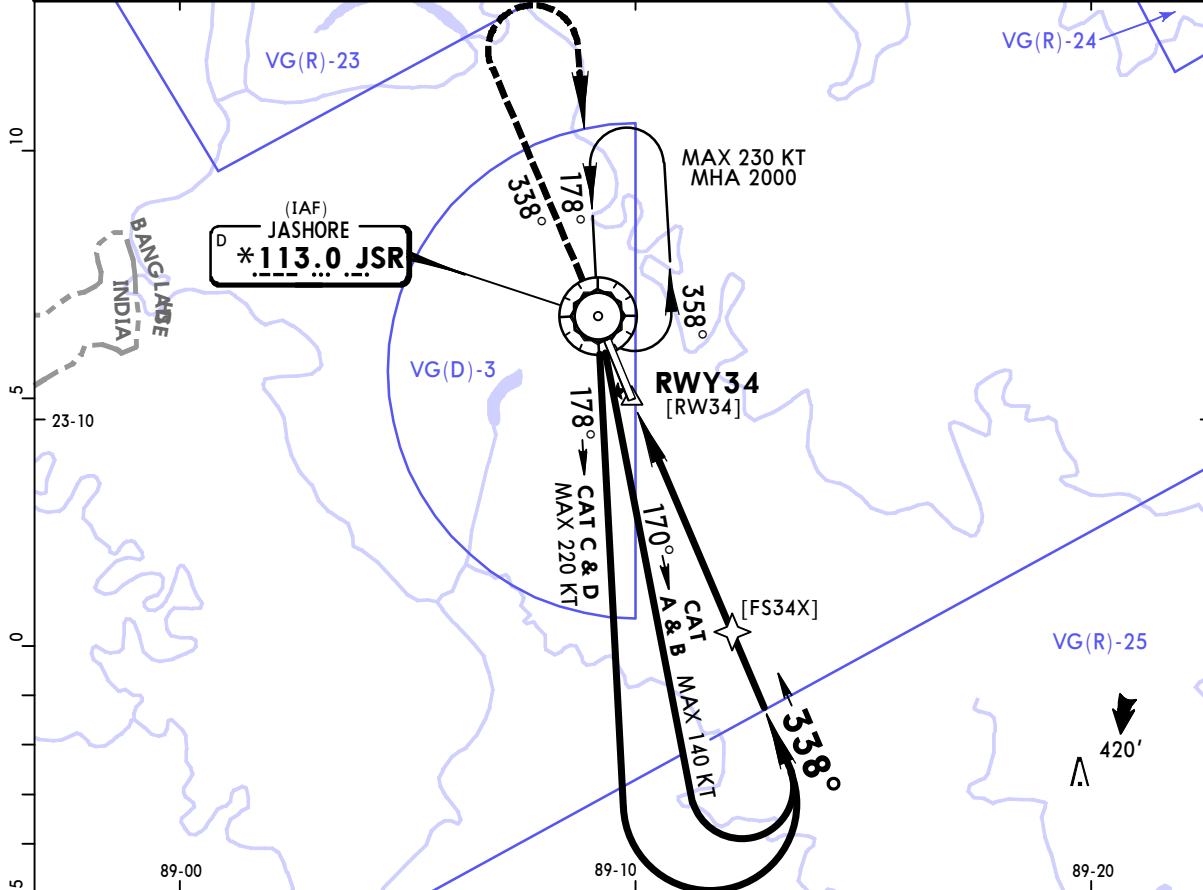
PANS OPS	A		
	B		
	C	RVR 1700m	
	D	VIS 2100m	

VGJR/JSR
JASHORE

JEPESEN
15 FEB 19 (13-6) Eff 28 Feb

JASHORE, BANGLADESH
VOR X Rwy 34

*JASHORE Tower			*JASHORE Ground		
123.2			121.8		
VOR JSR *113.0	Final Apch Crs 338°	No FAF	MDA(H) 410' (390')	Apt Elev 20' Rwy 20'	2000
MISSED APCH: Climb on 338° to 1500', then turn RIGHT, climb to 2000' and proceed DIRECT to VOR for holding or as directed by ATC. Do not turn before MAP.					
Alt Set: hPa	Rwy Elev: 1 hPa	Trans level: FL 60	Trans alt: 4000'	MSA JSR VOR	



Gnd speed-Kts	70	90	100	120	140	160	PAPI-L	1500' on 338°
Descent Angle 3.00°	372	478	531	637	743	849		
MAP at RWY34								

STRAIGHT-IN LANDING RWY 34	
MDA(H) 410' (390')	

PANS OPS	A	
	B	
	C	RVR 1900m VIS 2300m
	D	

Chart changes since cycle 11-2021

ADD = added chart, REV = revised chart, DEL = deleted chart.

ACT	PROCEDURE IDENT	INDEX	REV DATE	EFF DATE
-----	-----------------	-------	----------	----------

JASHORE, (JASHORE - VGJR)

TERMINAL CHART CHANGE NOTICES

No Chart Change Notices for Airport VGJR