

List of pages

Index
Airport Information For VGRJ
Terminal Charts For VGRJ
Revision Letter For Cycle 12-2021
Change Notices
Notebook

General Information

Location: RAJSHAHI BGD
ICAO/IATA: VGRJ / RJH
Lat/Long: N24° 26.2', E088° 37.0'
Elevation: 55 ft

Airport Use: Public
Daylight Savings: Not Observed
UTC Conversion: -6:00 = UTC
Magnetic Variation: 1.0° W

Customs: Yes
Airport Type: IFR
Landing Fee: Yes
Control Tower: Yes
Jet Start Unit: No
LLWS Alert: No
Beacon: No

Sunrise: 2330 Z
Sunset: 1254 Z

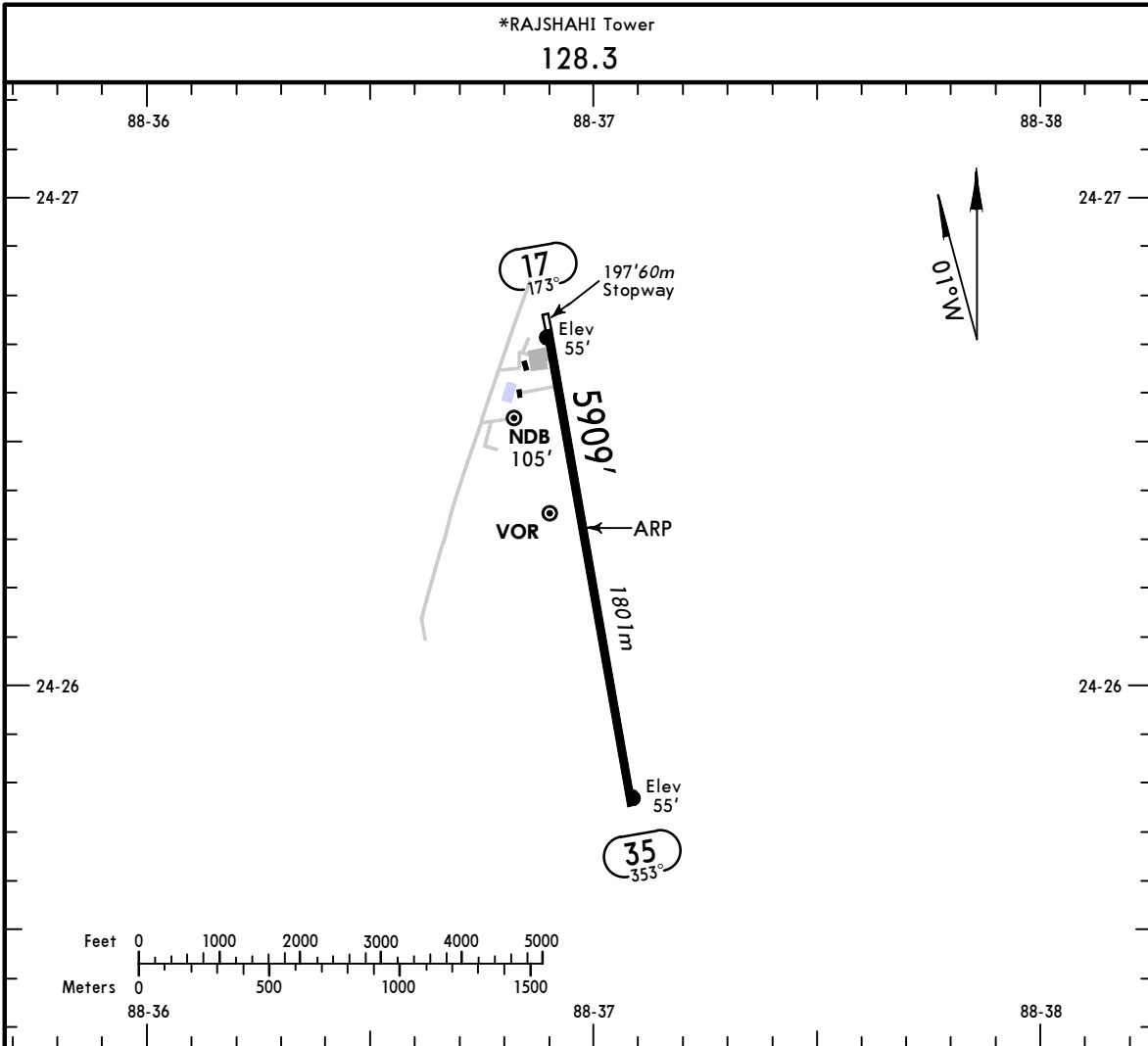
Runway Information

Runway: 17
Length x Width: 6001 ft x 98 ft
Surface Type: bitu
TDZ-Elev: 55 ft
Lighting: Edge

Runway: 35
Length x Width: 6001 ft x 98 ft
Surface Type: bitu
TDZ-Elev: 55 ft
Lighting: Edge
Stopway: 197 ft

Communication Information

Rajshahi Tower: 128.300



ADDITIONAL RUNWAY INFORMATION

RWY	USABLE LENGTHS	LANDING BEYOND	TAKE-OFF	WIDTH
17 35	RL PAPI-L			100' 30m

TAKE-OFF

AIR CARRIER (JAA)
 All Rwys

LVP must be in force
 RCLM (DAY only)
 or RL

RCLM (DAY only)
 or RL

A		
B	250m	400m
C		
D	NOT APPLICABLE	

VGRJ/RJH
SHAH MOKHDUM

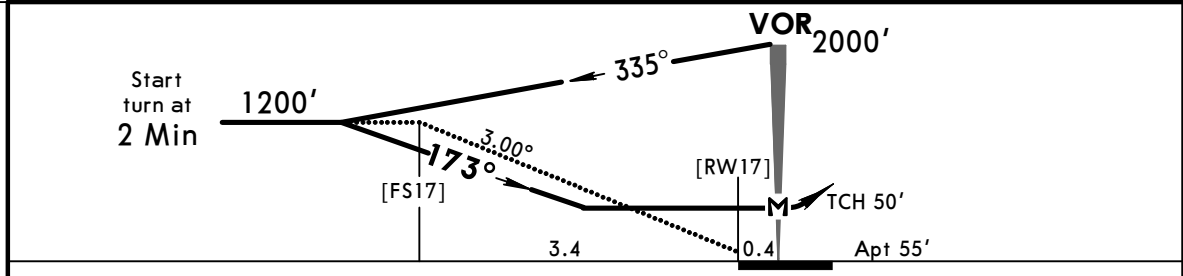
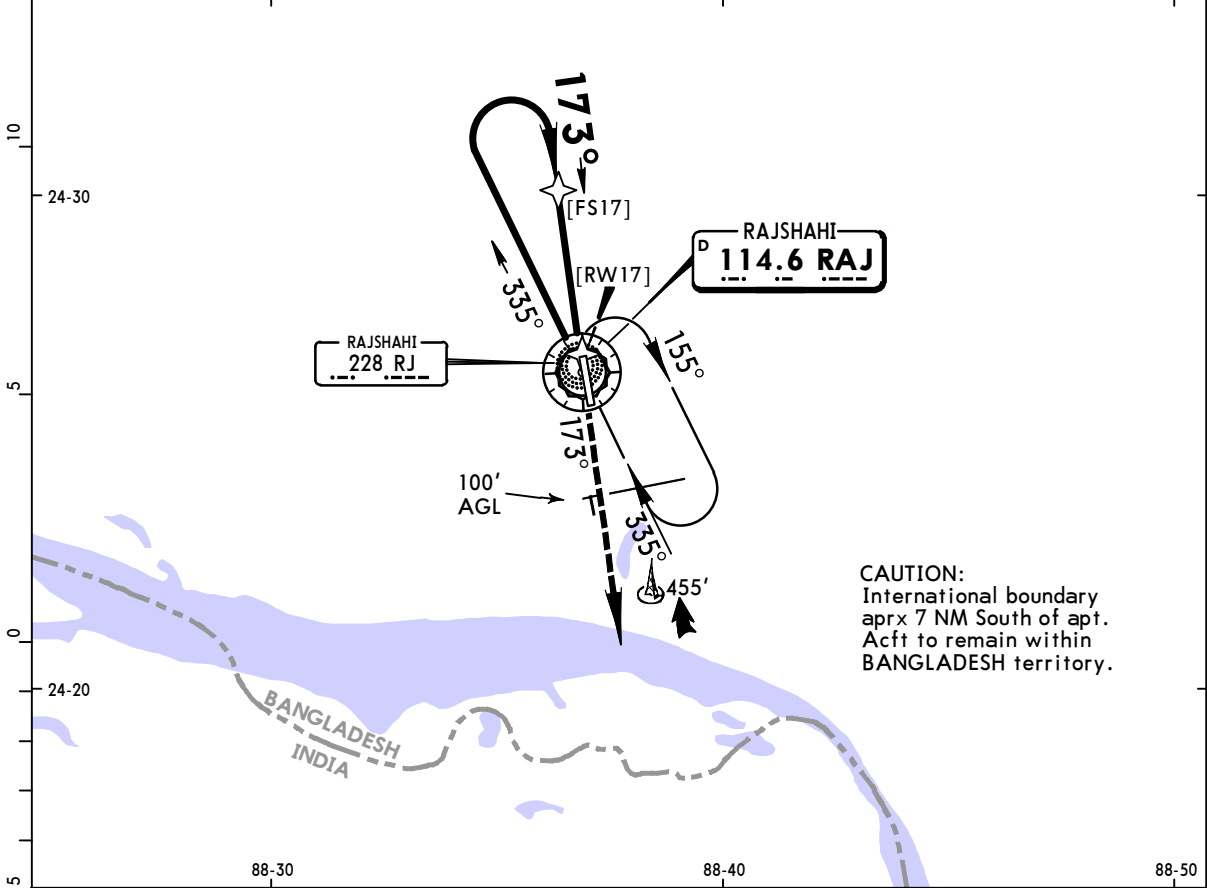
2 DEC 16
Eff 8 Dec

(13-1)

CAT A, B & C

JEPESEN RAJSHAHI, BANGLADESH
VOR Rwy 17

BRIEFING STRIP™	*RAJSHAHI Tower 128.3				<div style="border: 1px solid black; border-radius: 50%; width: 100px; height: 100px; margin: 0 auto;"></div> 2000' MSA RAJ VOR	
	VOR RAJ 114.6	Final Apch Crs 173°	Minimum Alt No FAF	MDA(H) 450' (395')		Apt Elev 55'
	MISSED APCH: Climb to 2000', then turn LEFT and contact Rajshahi TOWER.					
Alt Set: hPa		Apt Elev: 2 hPa		Trans level: FL 60		
Procedure based on 150 KT (still air).			Trans alt: 4000'			



Gnd speed-Kts	70	90	100	120	140	160	PAPI-L 2000' ↑
Descent Angle 3.00°	372	478	531	637	743	849	
MAP at VOR							

STRAIGHT-IN LANDING RWY 17	
MDA(H) 450' (395')	
A	2000m
B	2400m
C	2800m
D	NOT APPLICABLE

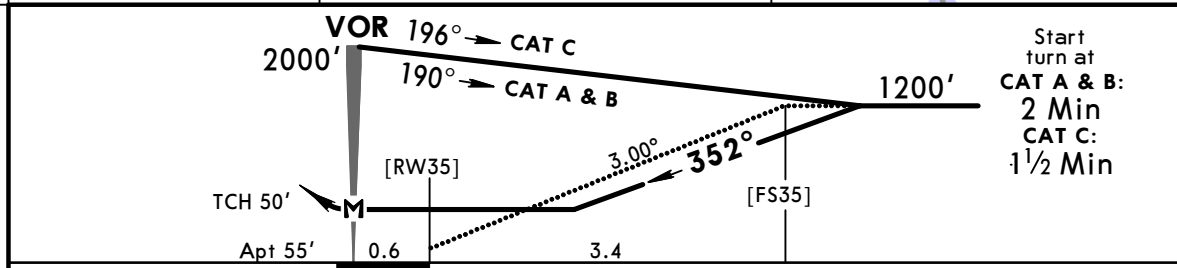
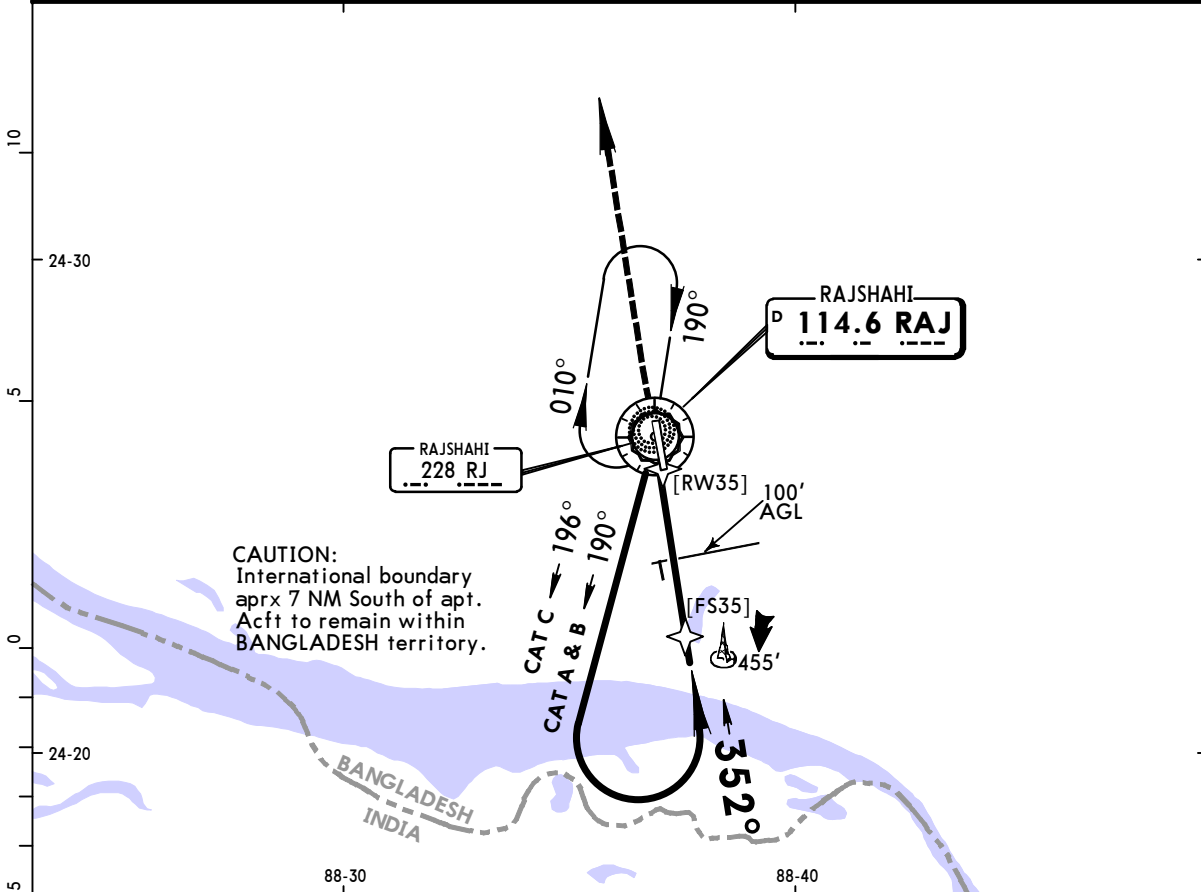
PANS OPS

VGRJ/RJH
SHAH MOKHDUM

2 DEC 16
Eff 8 Dec

JEPPESEN RAJSHAHI, BANGLADESH
VOR Rwy 35

*RAJSHAHI Tower 128.3					2000'
VOR RAJ 114.6	Final Apch Crs 352°	Minimum Alt No FAF	MDA(H) 550' (495')	Apt Elev 55'	
MISSED APCH: Climb to 2000', then turn LEFT and contact Rajshahi TOWER.					MSA RAJ VOR
Alt Set: hPa		Apt Elev: 2 hPa		Trans level: FL 60	
Procedure based on 150 KT (still air).			Trans alt: 4000'		



Gnd speed-Kts	70	90	100	120	140	160	PAPI-L 2000' ↑
Descent Angle 3.00°	372	478	531	637	743	849	
MAP at VOR							

STRAIGHT-IN LANDING RWY 35	
MDA(H) 550' (495')	
A	2000m
B	2400m
C	2800m
D	NOT APPLICABLE

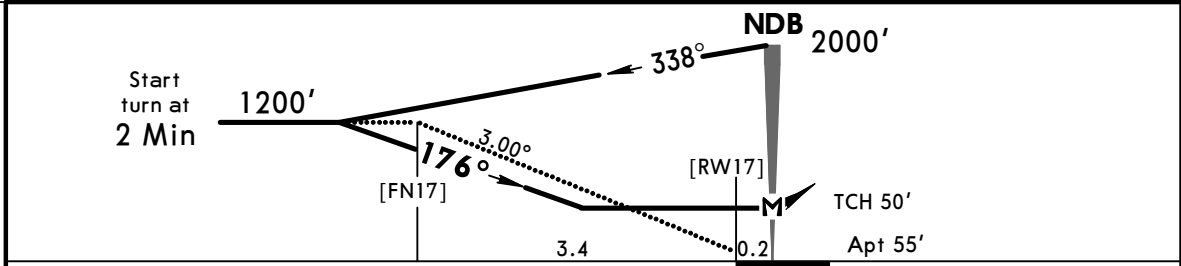
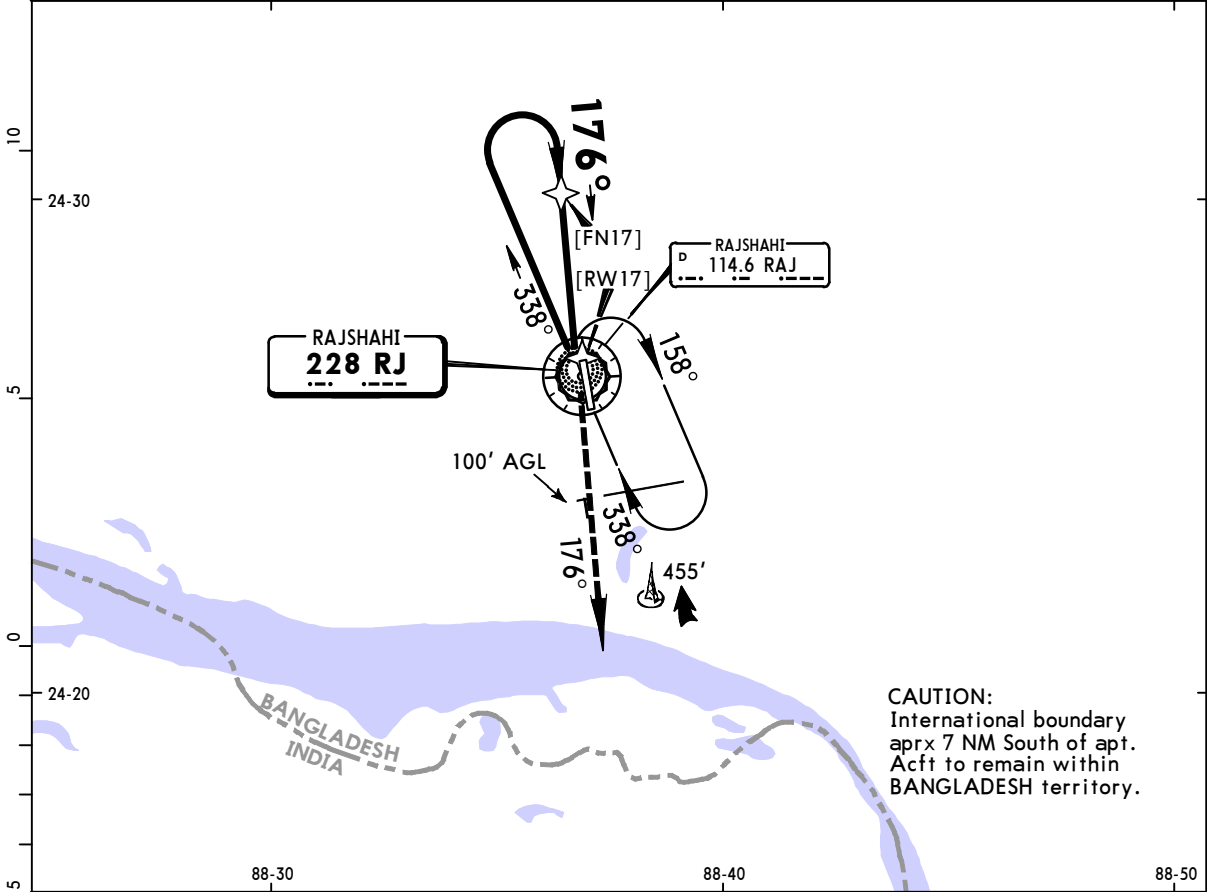
PANS OPS

VGRJ/RJH
SHAH MOKHDUM

2 DEC 16
Eff 8 Dec

JEPPESEN RAJSHAHI, BANGLADESH
16-1 CAT A, B & C
NDB Rwy 17

BRIEFING STRIP™	*RAJSHAHI Tower 128.3				<div style="border: 1px solid black; border-radius: 50%; width: 100px; height: 100px; margin: 0 auto; display: flex; align-items: center; justify-content: center;"> 2000' </div> MSA RJ NDB		
	NDB RJ 228	Final Apch Crs 176°	Minimum Alt No FAF	MDA(H) 450' (395)'		Apt Elev 55'	
	MISSED APCH: Climb to 2000', then turn LEFT and contact Rajshahi TOWER.						
Alt Set: hPa		Apt Elev: 2 hPa		Trans level: FL 60		Trans alt: 4000'	
Procedure based on 150 KT (still air).							



Gnd speed-Kts	70	90	100	120	140	160	PAPI-L 2000' ↑
Descent Angle 3.00°	372	478	531	637	743	849	
MAP at NDB							

STRAIGHT-IN LANDING RWY 17	
MDA(H) 450' (395')	
A	2000m
B	2400m
C	2800m
D	NOT APPLICABLE

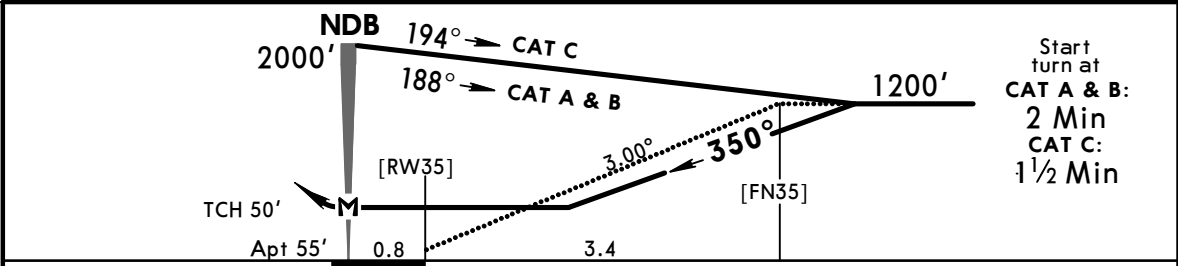
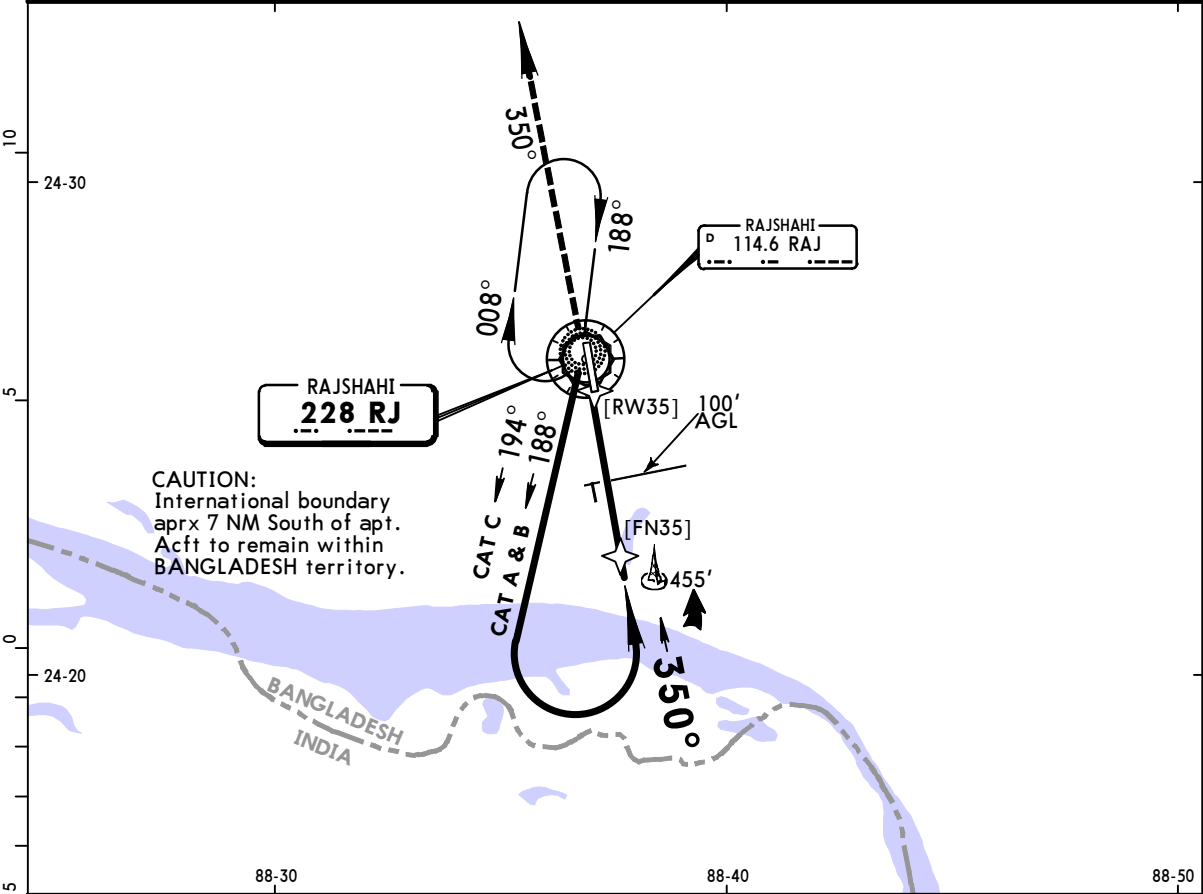
PANS OPS

VGRJ/RJH
SHAH MOKHDUM

2 DEC 16
Eff 8 Dec

JEPESEN RAJSHAHI, BANGLADESH
16-2 CAT A, B & C
NDB Rwy 35

*RAJSHAHI Tower 128.3					<div style="border: 1px solid black; border-radius: 50%; width: 100px; height: 100px; margin: 0 auto;"></div> 2000' MSA RJ NDB		
NDB RJ 228	Final Apch Crs 350°	Minimum Alt No FAF	MDA(H) 550' (495')	Apt Elev 55'			
MISSED APCH: Climb on track 350° to 2000' and contact ATC.							
Alt Set: hPa		Apt Elev: 2 hPa		Trans level: FL 60		Trans alt: 4000'	



Gnd speed-Kts	70	90	100	120	140	160	PAPI-L 2000' ↑ on 350°
Descent Angle 3.00°	372	478	531	637	743	849	
MAP at NDB							

STRAIGHT-IN LANDING RWY 35	
MDA(H) 550' (495')	
A	2000m
B	2400m
C	2800m
D	NOT APPLICABLE

PANS OPS

Chart changes since cycle 11-2021

ADD = added chart, REV = revised chart, DEL = deleted chart.

ACT	PROCEDURE IDENT	INDEX	REV DATE	EFF DATE
-----	-----------------	-------	----------	----------

RAJSHAHI, (SHAH MOKHDUM - VGRJ)

TERMINAL CHART CHANGE NOTICES

No Chart Change Notices for Airport VGRJ