

Index  
Airport Information For VGSD  
Terminal Charts For VGSD  
Revision Letter For Cycle 12-2021  
Change Notices  
Notebook

## General Information

Location: SAIDPUR BGD  
ICAO/IATA: VGSD / SPD  
Lat/Long: N25° 45.8', E088° 54.5'  
Elevation: 125 ft

Airport Use: Public  
Daylight Savings: Not Observed  
UTC Conversion: -6:00 = UTC  
Magnetic Variation: 1.0° W

Customs: Yes  
Airport Type: IFR  
Landing Fee: Yes  
Control Tower: Yes  
Jet Start Unit: No  
LLWS Alert: No  
Beacon: No

Sunrise: 2327 Z  
Sunset: 1255 Z

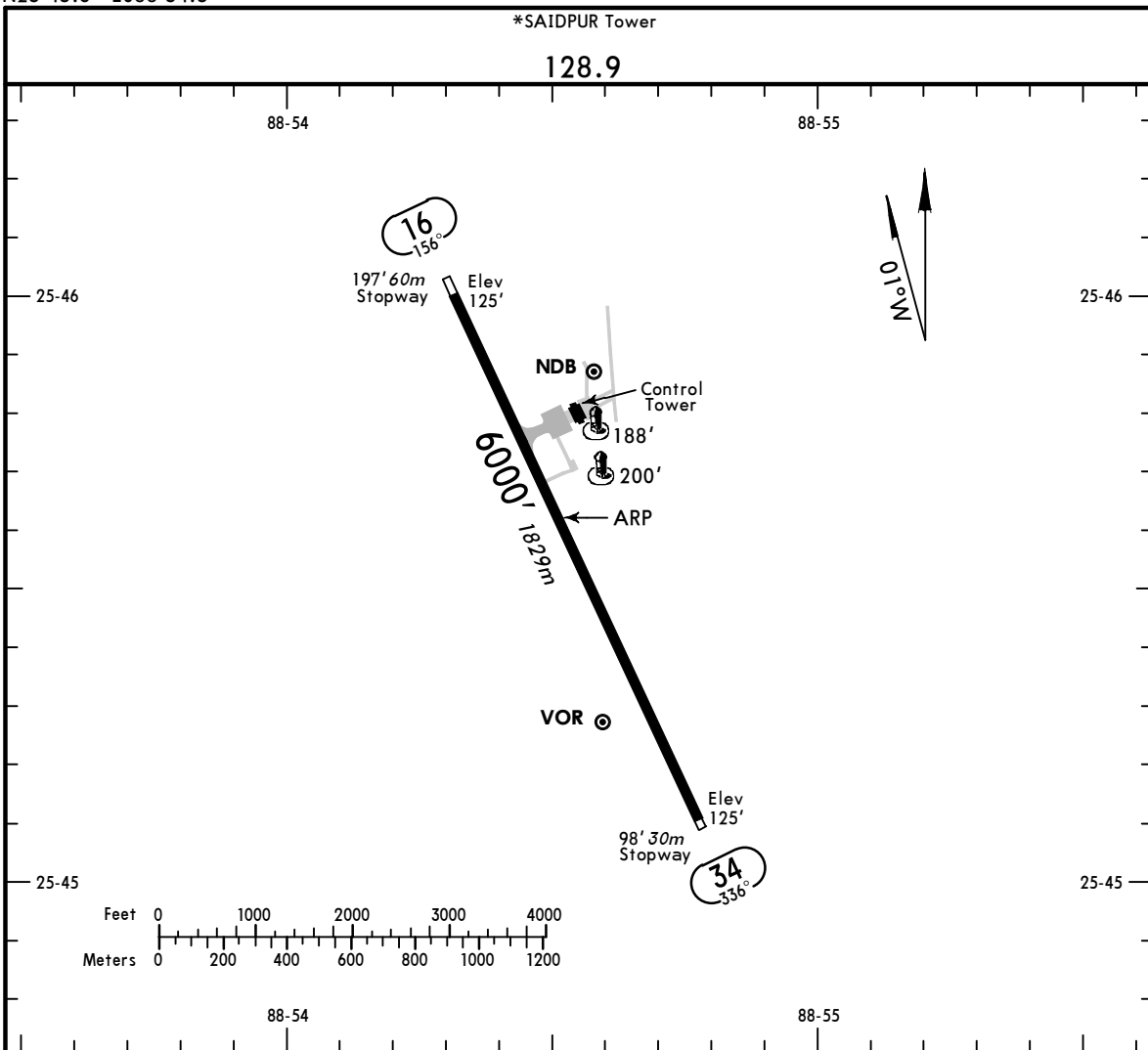
## Runway Information

Runway: 16  
Length x Width: 6001 ft x 98 ft  
Surface Type: bitu  
TDZ-Elev: 125 ft  
Lighting: Edge  
Stopway: 98 ft

Runway: 34  
Length x Width: 6001 ft x 98 ft  
Surface Type: bitu  
TDZ-Elev: 125 ft  
Lighting: Edge, ALS  
Stopway: 197 ft

## Communication Information

Saidpur Tower: 128.900

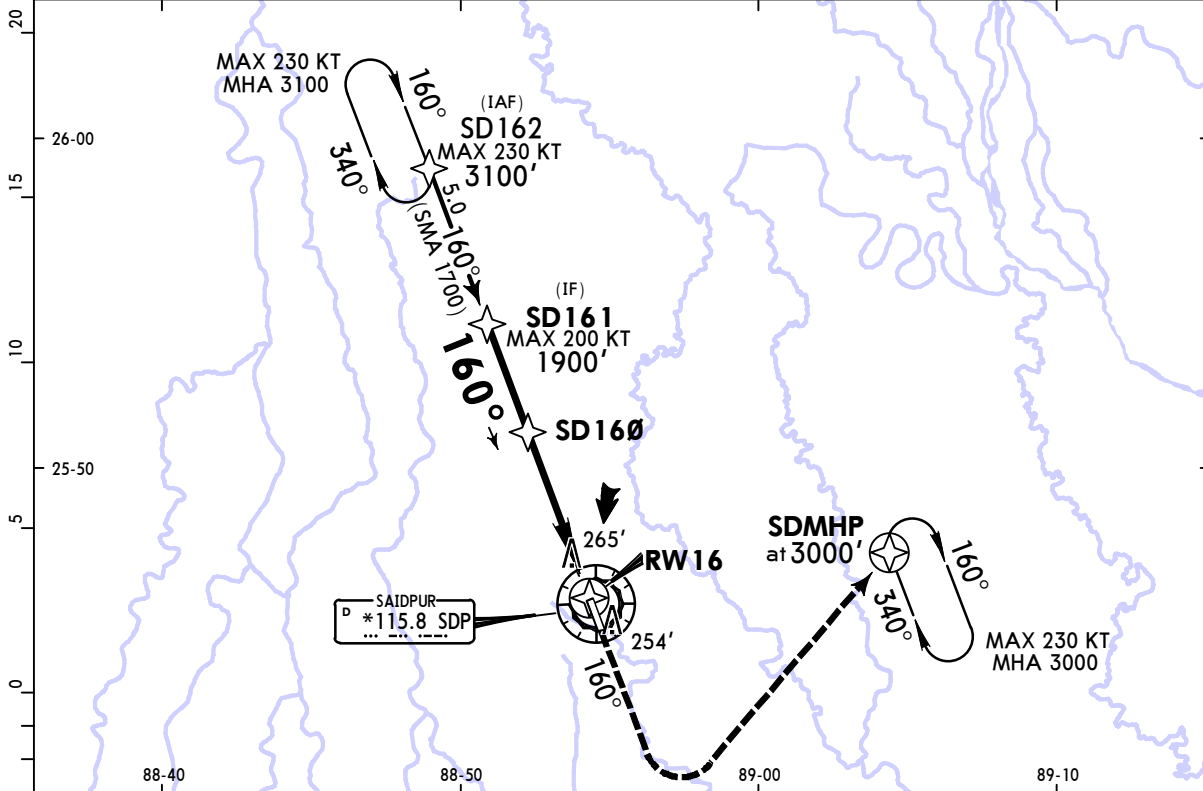


ADDITIONAL RUNWAY INFORMATION

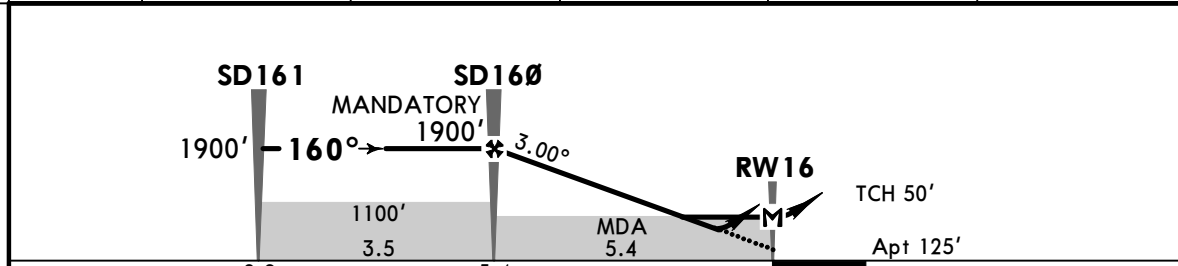
RWY	USABLE LENGTHS	LANDING BEYOND	TAKE-OFF	WIDTH
16 34	RL (60m) PAPI-L			100' 30m

TAKE-OFF	
AIR CARRIER (JAA)	
All Rwy's	
LVP must be in force RCLM (DAY only) or RL	RCLM (DAY only) or RL
A	
B	
C	
D	NOT APPLICABLE

*SAIDPUR Tower					<div style="border: 1px solid black; border-radius: 50%; width: 100px; height: 100px; margin: 0 auto; display: flex; align-items: center; justify-content: center;">2000</div>
128.9					
RNAV	Final Apch Crs <b>160°</b>	<b>SD160</b> MANDATORY <b>1900'</b> (1775')	LNAV/VNAV DA(H) <b>426'</b> (301')	Apt Elev 125'	
<b>MISSED APCH: Climb STRAIGHT AHEAD to 1200' then turn LEFT, climbing to 3000' and proceed direct to SDMHP or as directed. Do not turn before MAP.</b>					
Alt Set: hPa		Apt Elev: 5 hPa		Trans level: FL 60	Trans alt: 4000'
RNP apch	1. GNSS required. 2. Baro-VNAV not authorized below 0°C.				MSA SDP VOR



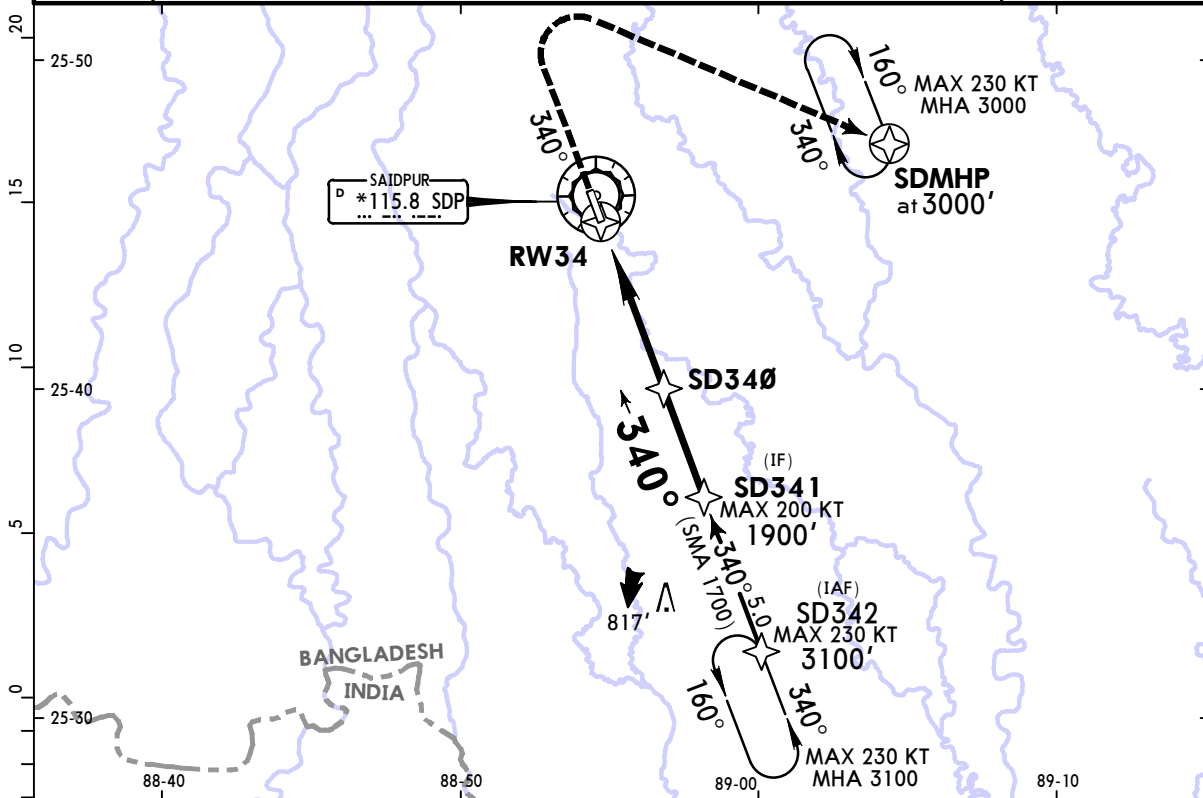
DIST to RW16	5.0	4.0	3.0	2.0	1.0
ALTITUDE	1770'	1450'	1130'	810'	495'



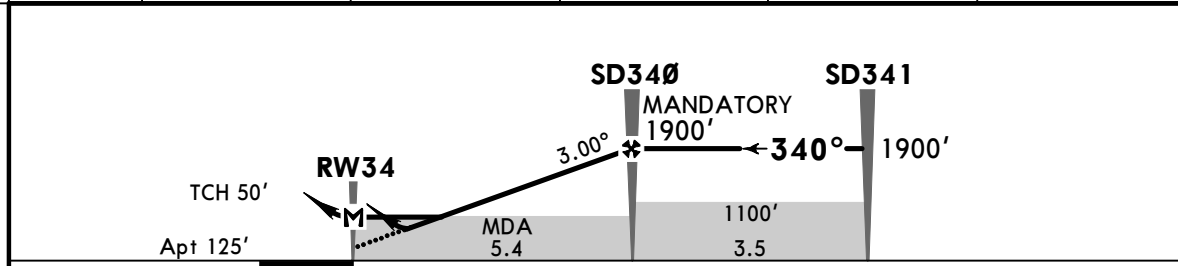
Gnd speed-Kts	70	90	100	120	140	160	PAPI-L <b>1200'</b> ↑	
Descent Angle	3.00°	372	478	531	637	743		849
LNAV/VNAV: MAP at DA								
LNAV: MAP at RW16								

STRAIGHT-IN LANDING RWY 16							
LNAV/VNAV DA(H) <b>426'</b> (301')				LNAV MDA(H) <b>520'</b> (395')			
A	RVR 1500m VIS 2000m			RVR 1800m VIS 2300m			
B							
C							
D							

*SAIDPUR Tower							
128.9							
BRIEFING STRIP™	RNAV	Final Apch Crs <b>340°</b>	<b>SD340</b> MANDATORY 1900' (1775')	LNAV/VNAV DA(H) <b>415' (290')</b>	Apt Elev 125'	2000  MSA SDP VOR	
<b>MISSED APCH: Climb STRAIGHT AHEAD to 1200' then turn RIGHT, climbing to 3000' and proceed direct to SDMHP or as directed.</b> Do not turn before MAP.							
Alt Set: hPa		Apt Elev: 5 hPa		Trans level: FL 60			Trans alt: 4000'
RNP apch	1. GNSS required. 2. Baro-VNAV not authorized below 0°C.						



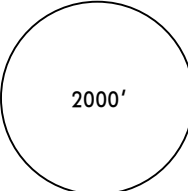
DIST to RW34	1.0	2.0	3.0	4.0	5.0
ALTITUDE	495'	810'	1130'	1450'	1770'

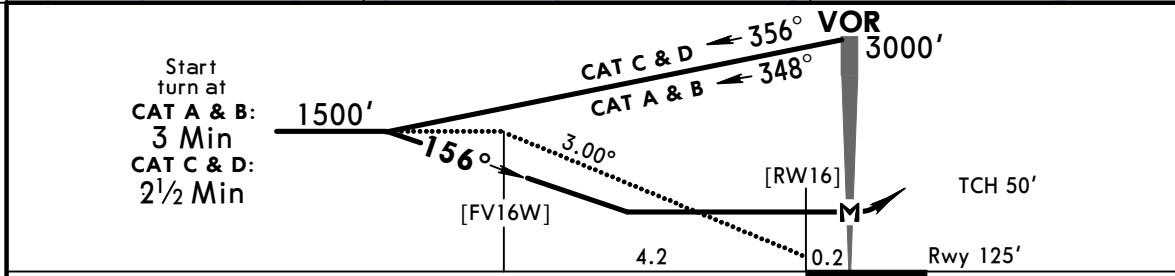
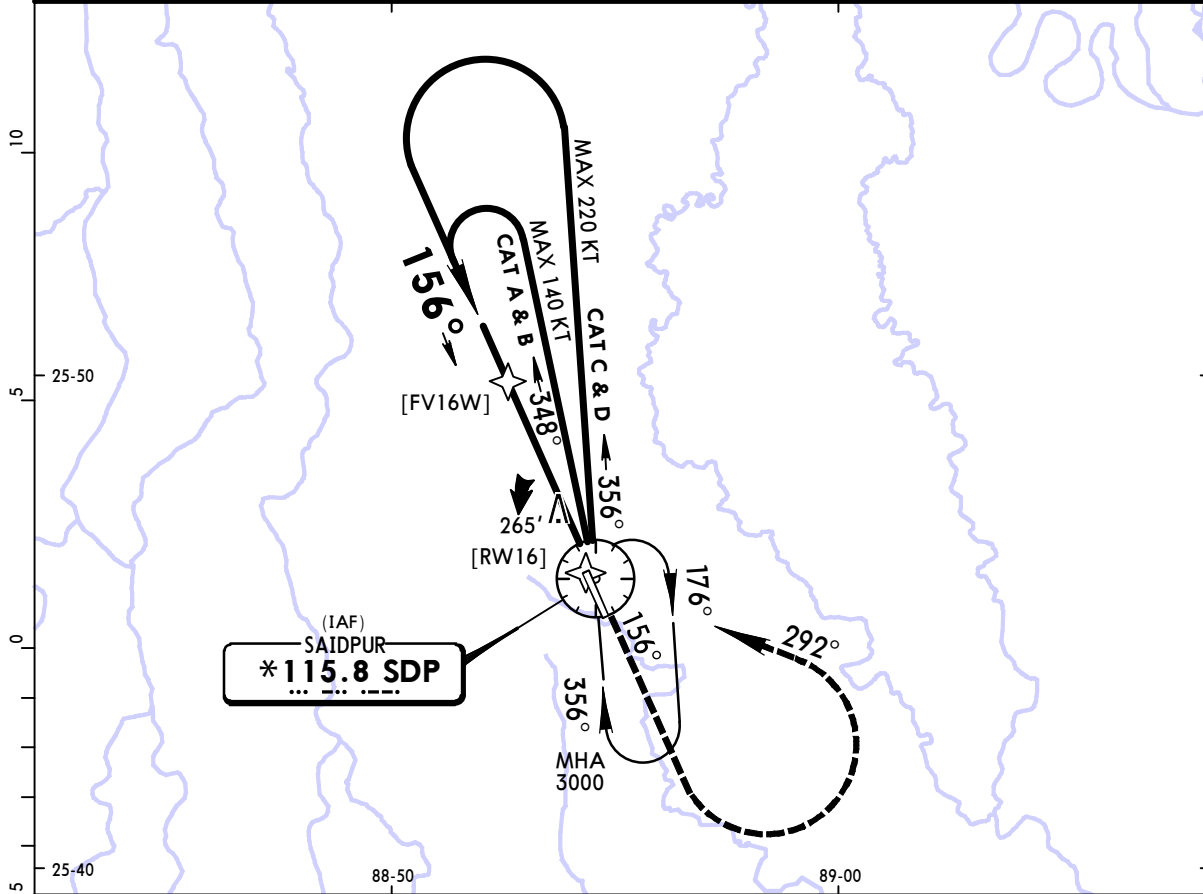


Gnd speed-Kts	70	90	100	120	140	160	ALS PAPI-L ↑ <b>1200'</b>
Descent Angle	3.00°	372	478	531	637	743	
LNAV/VNAV: MAP at DA							
LNAV: MAP at RW34							

STRAIGHT-IN LANDING RWY 34			
LNAV/VNAV DA(H) <b>415' (290')</b>		LNAV MDA(H) <b>510' (385')</b>	
ALS out		ALS out	

PANS OPS	A		
	B		
	C	RVR 1500m VIS 2000m	RVR 1800m VIS 2300m
	D		

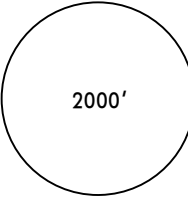
*SAIDPUR Tower					
128.9					
VOR SDP <b>*115.8</b>	Final Apch Crs <b>156°</b>	Minimum Alt No FAF	MDA(H) <b>560'</b> (435')	Apt Elev 125' Rwy 125'	 2000'
<b>MISSED APCH:</b> Climb on 156° to 1500', then turn LEFT climb to 3000' direct to VOR and hold, or as directed. Do not turn before MAP.					
Alt Set: hPa	Rwy Elev: 5 hPa	Trans level: FL 60	Trans alt: 4000'	MSA SDP VOR	

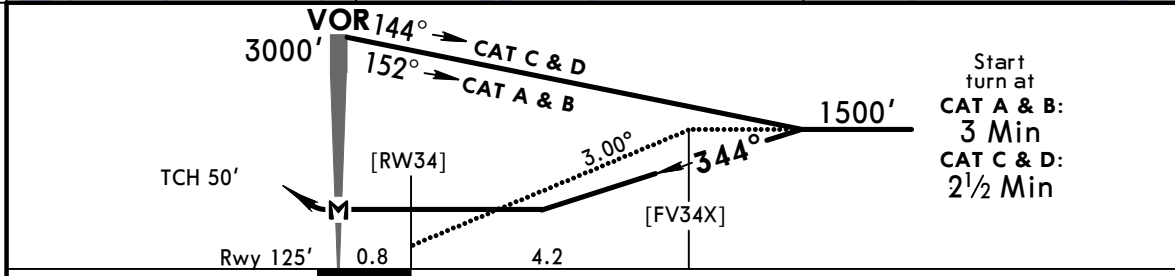
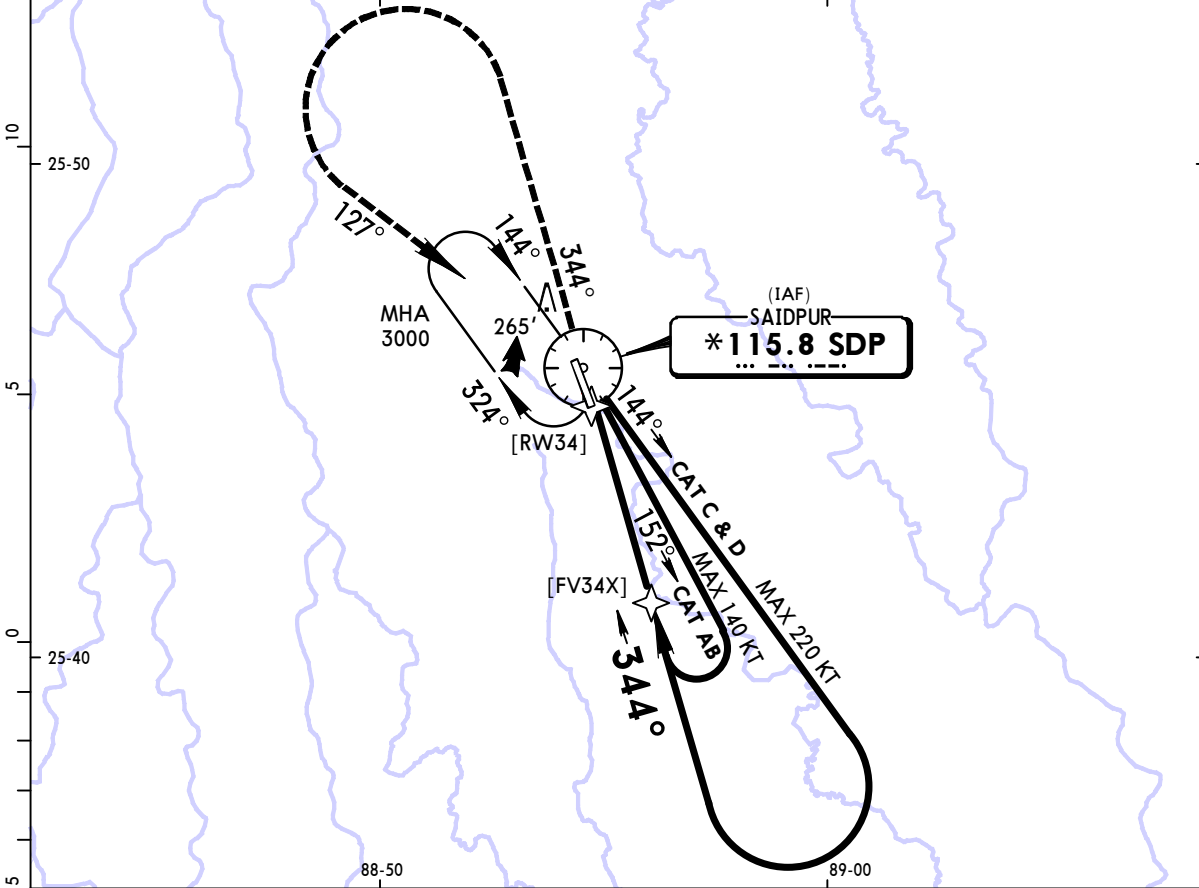


Gnd speed-Kts	70	90	100	120	140	160	PAPI-L <b>1500'</b> ↑ on <b>156°</b>
Descent Angle 3.00°	372	478	531	637	743	849	
MAP at VOR							

STRAIGHT-IN LANDING RWY 16	
MDA(H) <b>560'</b> (435')	
A	2600m
B	
C	
D	

PAINS OPS

*SAIDPUR Tower					
128.9					
VOR SDP *115.8	Final Apch Crs 344°	Minimum Alt No FAF	MDA(H) 530' (405')	Apt Elev 125' Rwy 125'	
MISSED APCH: Climb on 344° to 1500', then turn LEFT climb to 3000' direct to VOR and hold, or as directed. Do not turn before MAP.					
Alt Set: hPa	Rwy Elev: 5 hPa	Trans level: FL 60	Trans alt: 4000'	MSA SDP VOR	



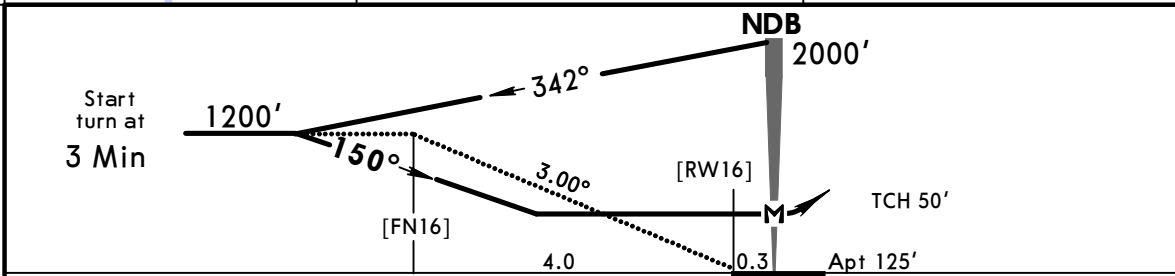
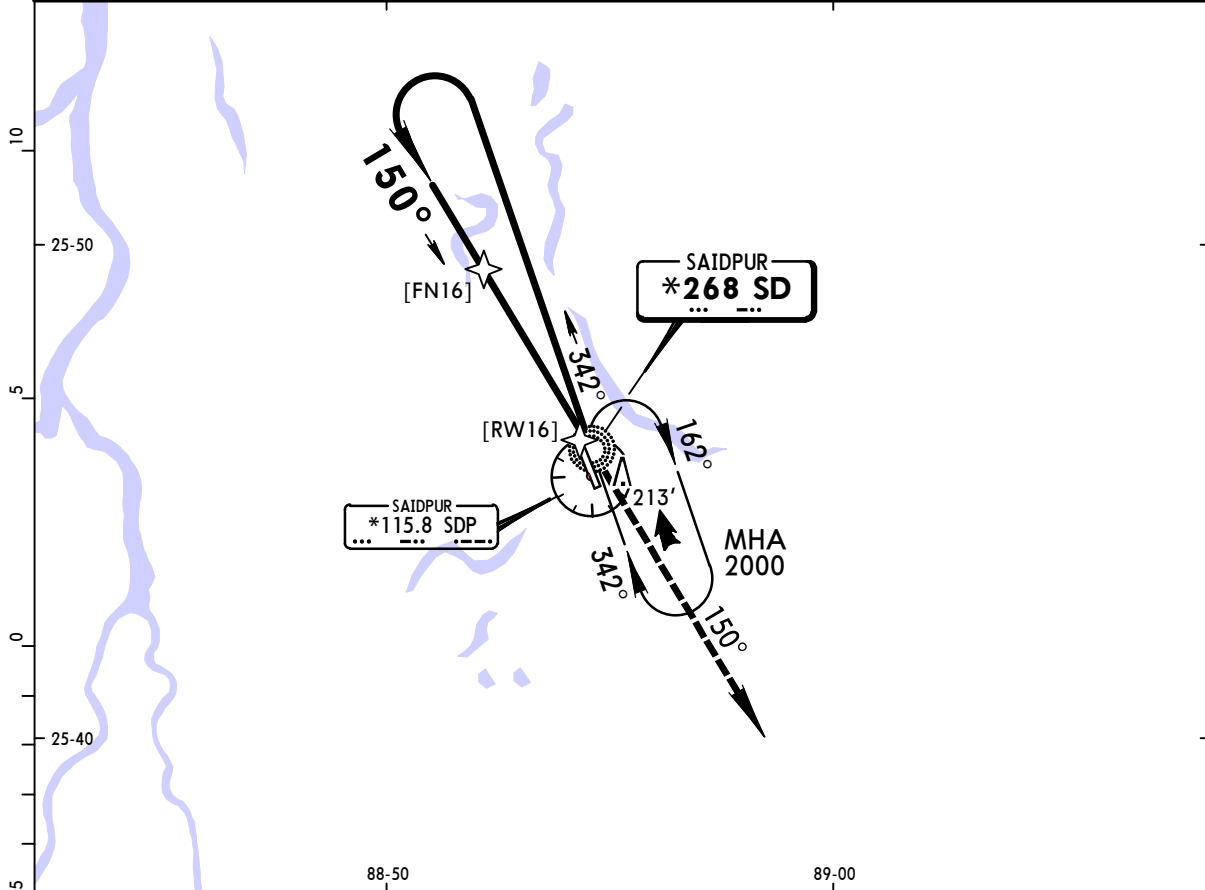
Gnd speed-Kts	70	90	100	120	140	160	PAPI-L 1500' ↑ on 344°
Descent Angle 3.00°	372	478	531	637	743	849	
MAP at VOR							

STRAIGHT-IN LANDING RWY 34

MDA(H) 530' (405')

A	2400m
B	
C	
D	

*SAIDPUR Tower						
128.9						
BRIEFING STRIP™	NDB SD *268	Final Apch Crs 150°	Minimum Alt No FAF	MDA(H) Refer to Minimums	Apt Elev 125'	2000'
	MISSED APCH: Climb on track 150° to 2000' and contact ATC.					
	Alt Set: hPa	Apt Elev: 5 hPa	Trans level: FL 60	Trans alt: 4000'		
Procedure based on 150 KT TAS (still air).						MSA SD NDB

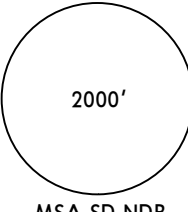


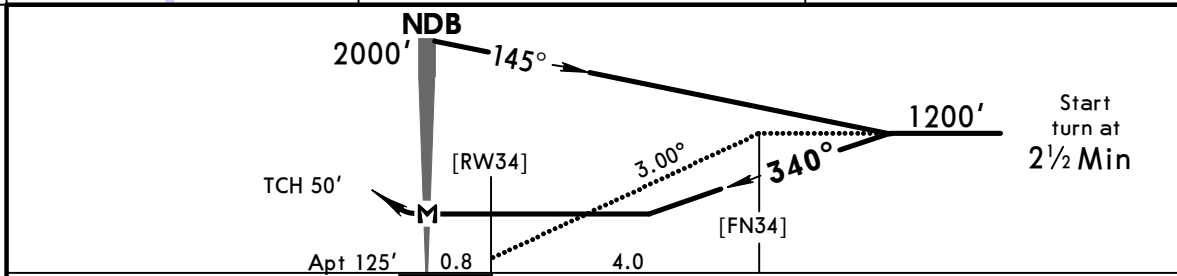
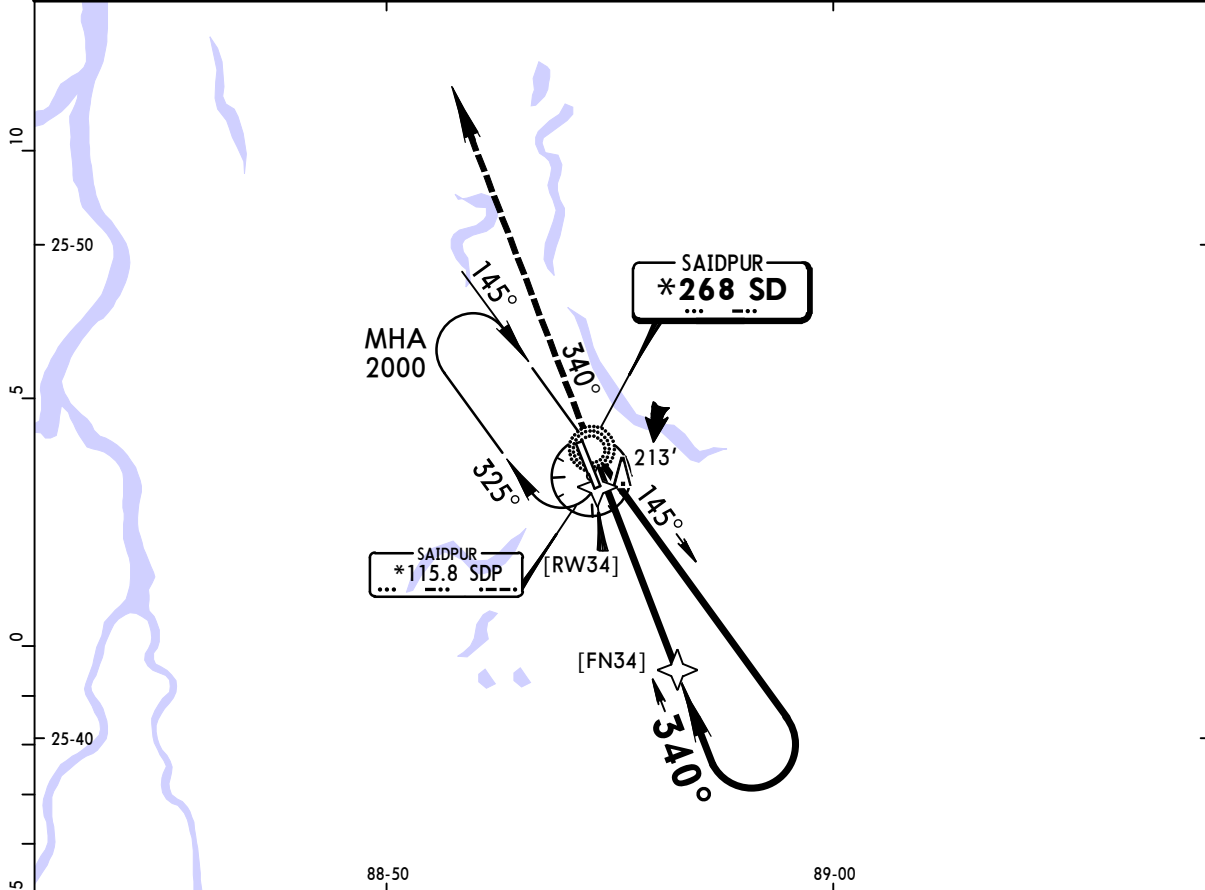
Gnd speed-Kts	70	90	100	120	140	160	PAPI-L 2000' on 150°
Descent Angle 3.00°	372	478	531	637	743	849	
MAP at NDB							

STRAIGHT-IN LANDING RWY 16	
MDA(H) A: 500' (375') BC: 550' (425')	
A	2000m
B	2400m
C	2800m
D	NOT APPLICABLE

PANS OPS



*SAIDPUR Tower					
128.9					
BRIEFING STRIP™	NDB SD *268	Final Apch Crs 340°	Minimum Alt No FAF	MDA(H) 550' (425')	Apt Elev 125'
	MISSED APCH: Climb on track 340° to 2000' and contact ATC.				
	Alt Set: hPa	Apt Elev: 5 hPa	Trans level: FL 60	Trans alt: 4000'	
					2000' 



Gnd speed-Kts	70	90	100	120	140	160	PAPI-L 2000' on 340° ↑
Descent Angle 3.00°	372	478	531	637	743	849	
MAP at NDB							

STRAIGHT-IN LANDING RWY 34	
MDA(H) 550' (425')	
A	2000m
B	2400m
C	2800m
D	NOT APPLICABLE

PANS OPS

## Chart changes since cycle 11-2021

ADD = added chart, REV = revised chart, DEL = deleted chart.

ACT	PROCEDURE IDENT	INDEX	REV DATE	EFF DATE
-----	-----------------	-------	----------	----------

SAIDPUR, (SAIDPUR - VGSD)

## TERMINAL CHART CHANGE NOTICES

### No Chart Change Notices for Airport VGSD