

List of pages

Trip Kit Index

Airport Information For VGSY

Terminal Charts For VGSY

Revision Letter For Cycle 22-2020

Change Notices

Notebook

General Information

Location: SYLHET BGD
ICAO/IATA: VGSY / ZYL
Lat/Long: N24° 57.7', E091° 52.3'
Elevation: 50 ft

Airport Use: Public
Daylight Savings: Not Observed
UTC Conversion: -6:00 = UTC
Magnetic Variation: 1.0° W

Customs: Yes
Airport Type: IFR
Landing Fee: Yes
Control Tower: Yes
Jet Start Unit: No
LLWS Alert: No
Beacon: No

Sunrise: 0026 Z
Sunset: 1147 Z

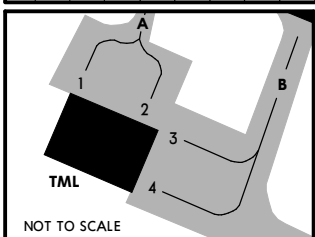
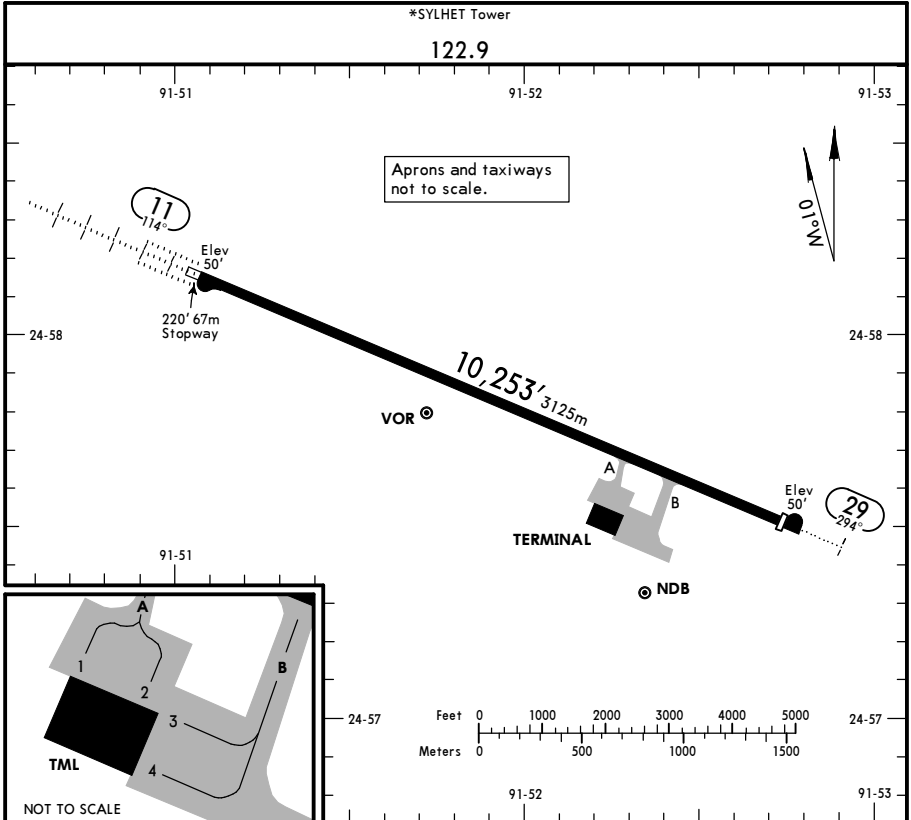
Runway Information

Runway: 11
Length x Width: 10253 ft x 148 ft
Surface Type: bitu
TDZ-Elev: 50 ft
Lighting: Edge, ALS

Runway: 29
Length x Width: 10253 ft x 148 ft
Surface Type: bitu
TDZ-Elev: 50 ft
Lighting: Edge, ALS
Displaced Threshold: 296 ft
Stopway: 220 ft

Communication Information

Sylhet Tower: 122.900
Sylhet Tower: 122.500 Secondary



ADDITIONAL RUNWAY INFORMATION

RWY				USABLE LENGTHS		TAKE-OFF	WIDTH
	HIRL (60m)	HIALS	PAPI-L (3.0°)	Threshold	Glide Slope		
11	HIRL (60m)	HIALS	PAPI-L (3.0°)		9342' 2847m		148'
29	HIRL (60m)	ALS	PAPI-L (3.0°)	9957' 3035m			45m

ACFT with wingspan more than 80' (24m) parking by pushback only.

TAKE-OFF	
AIR CARRIER (JAA)	
All Rwys	
LVP must be in force RCLM (DAY only) or RL	RCLM (DAY only) or RL
A	400m
B	
C	
D	
	250m
	300m

STRAIGHT-IN RWY		A	B	C	D
11	VOR ILS DME	250'(200')	250'(200')	250'(200')	260'(210')
	FULL	800m	800m	800m	800m
	ALS out	1400m	1400m	1400m	1400m
	① LOC	350'(300')	350'(300')	350'(300')	350'(300')
		1600m	2000m	2400m	2400m
	ALS out	2000m	2400m	2800m	2800m
	RNP (LNAV/VNAV)	304'(254')	304'(254')	304'(254')	304'(254')
		800m	800m	800m	800m
	ALS out	1500m	1500m	1500m	1500m
	① RNP (LNAV)	390'(340')	390'(340')	390'(340')	390'(340')
		1100m	1100m	1100m	1100m
	ALS out	2000m	2000m	2000m	2000m
① VOR	450'(400')	450'(400')	500'(450')	500'(450')	
	1600m	2000m	2400m	2400m	
ALS out	2000m	2400m	2800m	2800m	
VOR	450'(400')	450'(400')	500'(450')	500'(450')	
	1600m	2000m	2400m	2500m	
ALS out	2000m	2400m	2800m	2800m	
① NDB	450'(400')	450'(400')	500'(450')	500'(450')	
	1600m	2000m	2400m	2400m	
ALS out	2000m	2400m	2800m	2800m	
NDB	450'(400')	450'(400')	500'(450')	500'(450')	
	1600m	2000m	2400m	2500m	
ALS out	2000m	2400m	2800m	2800m	
29	① RNP (LNAV)	550'(500')	550'(500')	550'(500')	550'(500')
		3000m	3000m	3000m	3000m
	ALS out	3200m	3200m	3200m	3200m
	① VOR	450'(400')	450'(400')	500'(450')	500'(450')
		1600m	2000m	2800m	2800m
	ALS out	2000m	2400m	2800m	2800m
	VOR	450'(400')	450'(400')	500'(450')	500'(450')
		1600m	2000m	2800m	2800m
	ALS out	2000m	2400m	2800m	2800m
	① NDB	450'(400')	450'(400')	500'(450')	500'(450')
		1600m	2000m	2800m	2800m
	ALS out	2000m	2400m	2800m	2800m
NDB	450'(400')	450'(400')	500'(450')	500'(450')	
	1600m	2000m	2800m	2800m	
ALS out	2000m	2400m	2800m	2800m	

① Continuous Descent Final Approach.

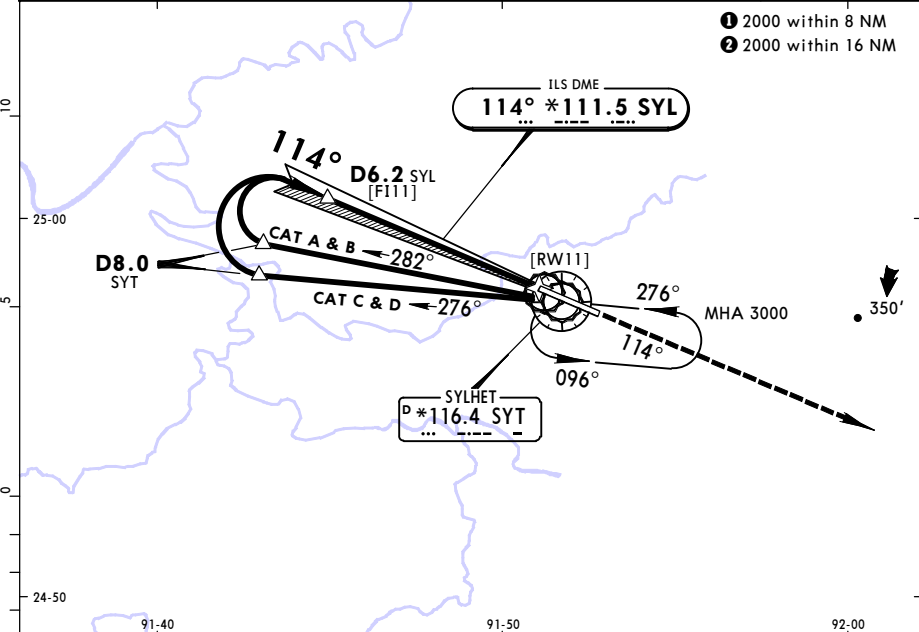
CIRCLE-TO-LAND	A	B	C	D
After RNP rwy 29	590'(540')	600'(550')	840'(790')	840'(790')
	② V1500m	② V1600m	② V2400m	② V3600m

② or higher minimums of preceding straight-in approach.

TAKE-OFF

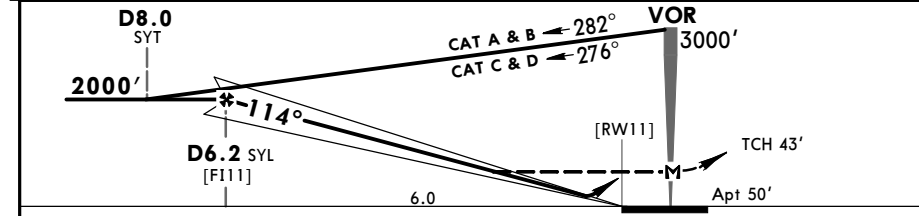
	Low Visibility Take-off	Day: RL or RCLM Night: RL	Adequate vis ref (Day only)
A	Day: RL & RCLM Night: RL	Day: RL or RCLM Night: RL	
B			
C	R300m	400m	500m
D			

*SYLHET Tower				
122.9				
LOC SYL *111.5	Final Apch Crs 114°	GS D6.2 SYL 2000' (1950')	ILS DA(H) Refer to Minimums	Apt Elev 50'
MISSED APCH: Climb on track 114° to 2000', then contact ATC. CAUTION: Hill 0.3 NM from threshold rwy 29. Exercise caution during missed apch.				
Alt Set: hPa Apt Elev: 2 hPa Trans level: FL 60 Trans alt: 4000' CAUTION: High hills 12 NM N, NE and NW of the airfield in India territory.				



- ① 2000 within 8 NM
- ② 2000 within 16 NM

LOC	SYL DME	6.0	5.0	4.0	3.0	2.0	1.0
(GS out)	ALTITUDE	1940'	1630'	1310'	990'	670'	350'



Gnd speed-Kts	70	90	100	120	140	160	ILS PAPI 2000' on 114°	
ILS GS or LOC Descent Angle	3.00°	372	478	531	637	743		849
MAP at VOR								

STRAIGHT-IN LANDING RWY 11			
ILS		LOC (GS out)	
DA(H) ABC: 250'(200') D: 260'(210')		MDA(H) 350'(300')	
FULL		ALS out	
A		1600m	2000m
B		2000m	2400m
C	800m	1400m	
D		2400m	2800m

PANS OPS

VGSY/ZYL
OSMANI INTL

JEPPESEN
4 OCT 19
Eff 10 Oct (11-2)

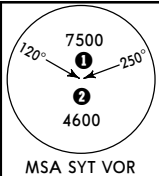
SYLHET, BANGLADESH
via ARC VOR ILS DME Rwy 11

*SYLHET Tower

122.9

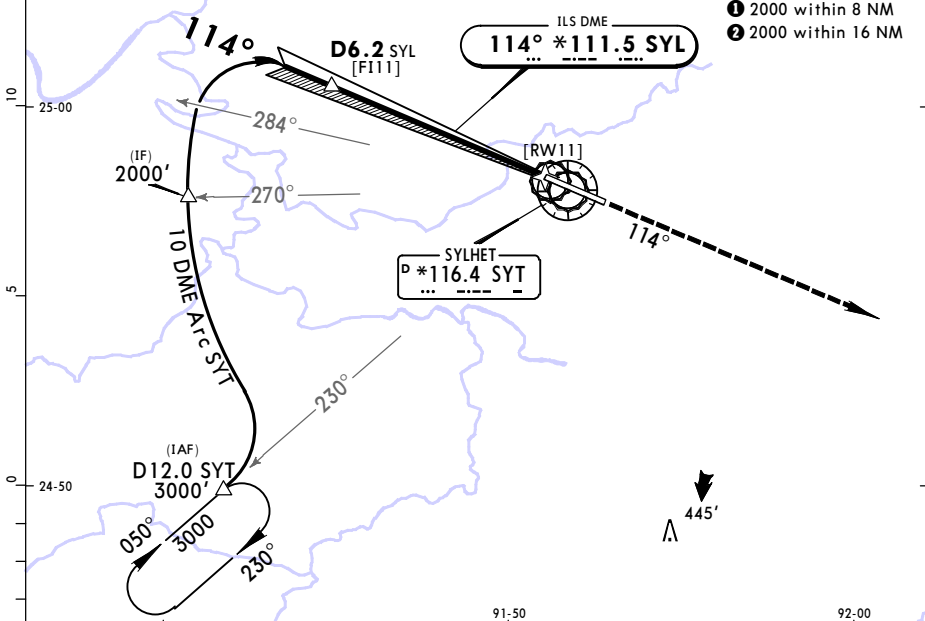
BRIEFING STRIP™

LOC SYL *111.5	Final Apch Crs 114°	GS D6.2 SYL 2000' (1950')	ILS DA(H) Refer to Minimums	Apt Elev 50'
----------------------	---------------------------	---------------------------------	--------------------------------------	--------------

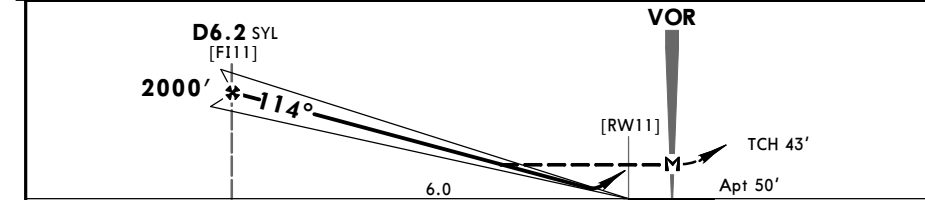


MISSED APCH: Climb on track 114° to 2000', then contact ATC.
CAUTION: Hill 0.3 NM from threshold rwy 29. Exercise caution during missed apch.
 Alt Set: hPa Apt Elev: 2 hPa Trans level: FL 60 Trans alt: 4000'
CAUTION: High hills 12 NM N, NE and NW of the airfield in India territory.

- ① 2000 within 8 NM
- ② 2000 within 16 NM



LOC	SYL DME	6.0	5.0	4.0	3.0	2.0	1.0
(GS out)	ALTITUDE	1940'	1630'	1310'	990'	670'	350'

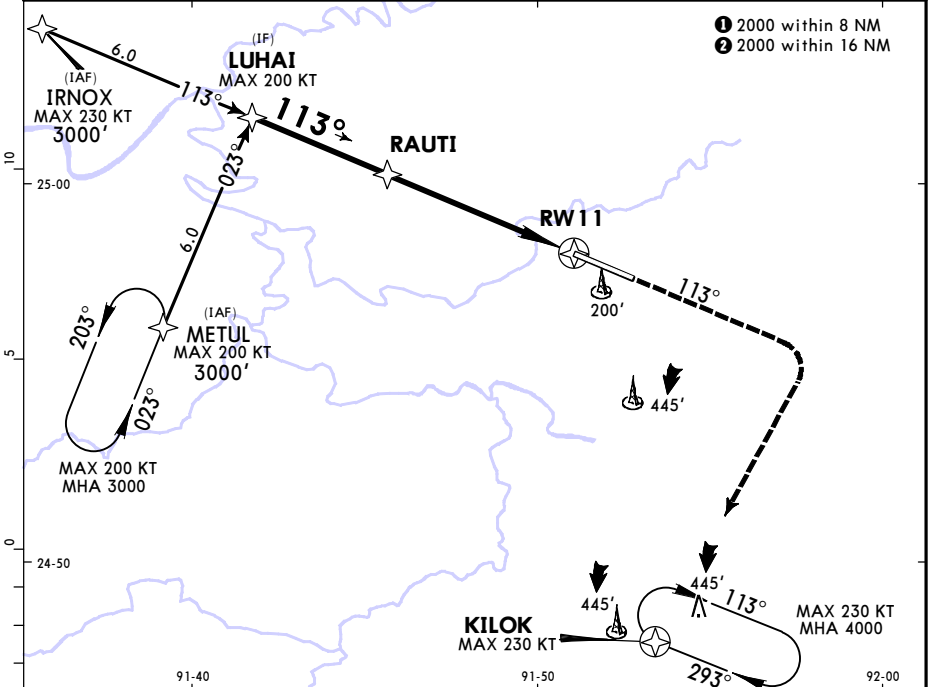


Gnd speed-Kts	70	90	100	120	140	160	HIALS PAPI 2000' on 114°	
ILS GS or LOC Descent Angle	3.00°	372	478	531	637	743		849
MAP at VOR								

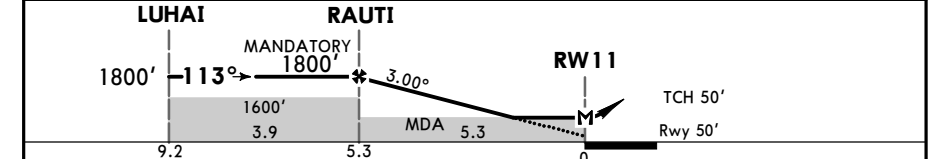
STRAIGHT-IN LANDING RWY 11				LOC (GS out)	
DA(H) ABC: 250'(200') D: 260'(210')		MDA(H) 350'(300')			
FULL		ALS out		ALS out	
A			1600m	2000m	
B			2000m	2400m	
C	800m	1400m			
D			2400m	2800m	

PANS OPS

*SYLHET Tower 122.9				
RNAV	Final Apch Crs 113°	Mandatory Alt RAUTI 1800' (1750')	LNAV/VNAV DA(H) 304' (254')	Apt Elev 50' Rwy 50'
MISSED APCH: Climb on course 113° to 1500', then turn RIGHT direct to KILOK and hold at 4000' or as directed. Do not turn before MAP.				
Alt Set: hPa	Rwy Elev: 2 hPa	Trans level: FL 60	Trans alt: 4000'	MSA ARP
RNP Apch	1. GNSS required. 2. BARO-VNAV not authorized below temperature 0°C.			



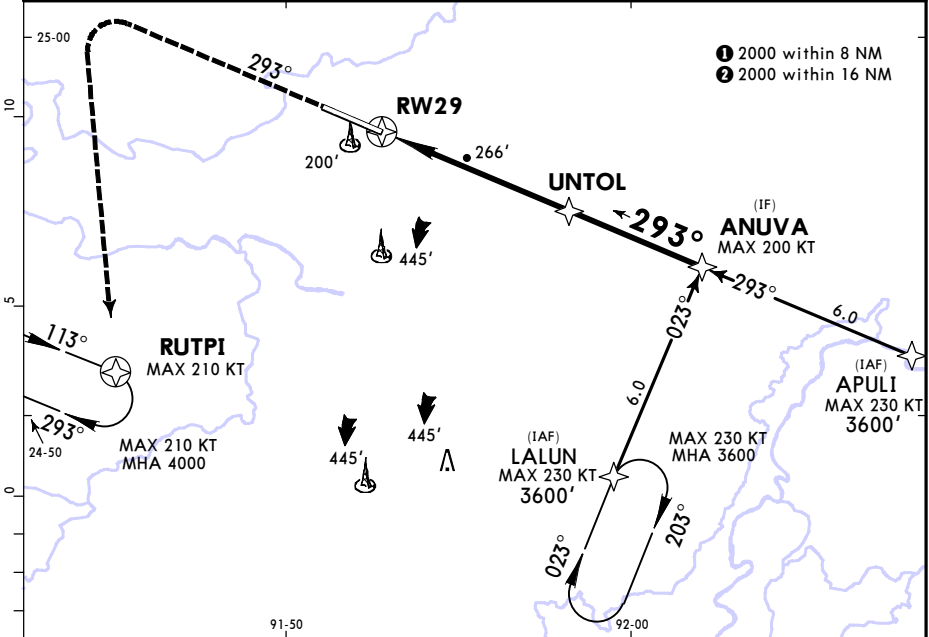
DIST to RW11	5.0	4.0	3.0	2.0	1.0
ALTITUDE	1700'	1380'	1060'	740'	420'



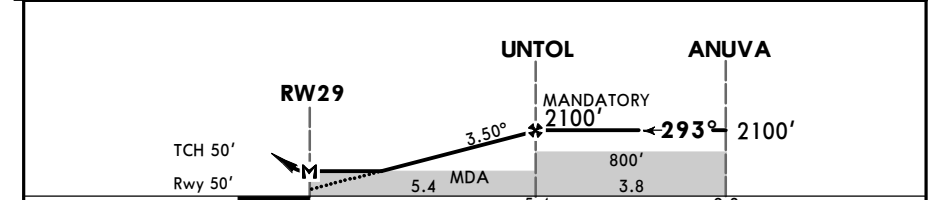
Gnd speed-Kts	70	90	100	120	140	160	HIALS PAPI 1500' on 113°	
Descent Angle	3.00°	372	478	531	637	743		849
LNAV/VNAV: MAP at DA. LNAV: MAP at RW11.								
FAF to RW11	5.3	4:33	3:32	3:11	2:39	2:16	1:59	

STRAIGHT-IN LANDING RWY 11	
LNAV/VNAV DA(H) 304' (254')	LNAV MDA(H) 390' (340')
ALS out	ALS out
A	
B	
C	800m
D	1500m
	1100m
	1600m
	2000m

*SYLHET Tower					122.9	
RNAV	Final Apch Crs 293°	Mandatory Alt UNTOL 2100' (2050')	LNAV MDA(H) 550' (500')	Apt Elev 50' Rwy 50'		
MISSED APCH: Climb on course 293° to 2000', then turn LEFT direct to RUTPI and hold at 4000' or as directed. Do not turn before MAP.						MSA ARP
Alt Set: hPa		Rwy Elev: 2 hPa		Trans level: FL 60		
RNP Apch		1. GNSS required. 2. CAUTION: Hill penetrating VSS 0.3 NM from THR29.				



DIST to RW29	1.0	2.0	3.0	4.0	5.0
ALTITUDE	480'	850'	1220'	1590'	1960'



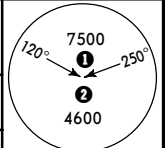
Gnd speed-Kts	70	90	100	120	140	160	
Descent Angle 3.50°	434	557	619	743	867	991	
MAP at RW29	5.4	4:38	3:36	3:14	2:42	2:19	

STRAIGHT-IN LANDING RWY 29			CIRCLE-TO-LAND		
MDA(H) 550' (500')					
		ALS out	Max Kts	MDA(H)	
A			100	590' (540')	3200m
B			135	600' (550')	3200m
C	3000m	3200m	180	840' (790')	3200m
D			205	840' (790')	3600m

*SYLHET Tower

122.9

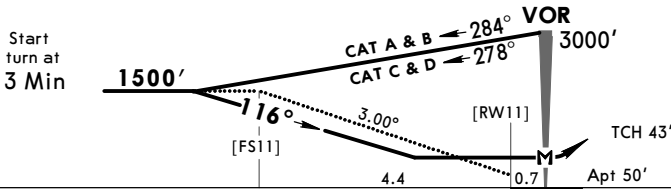
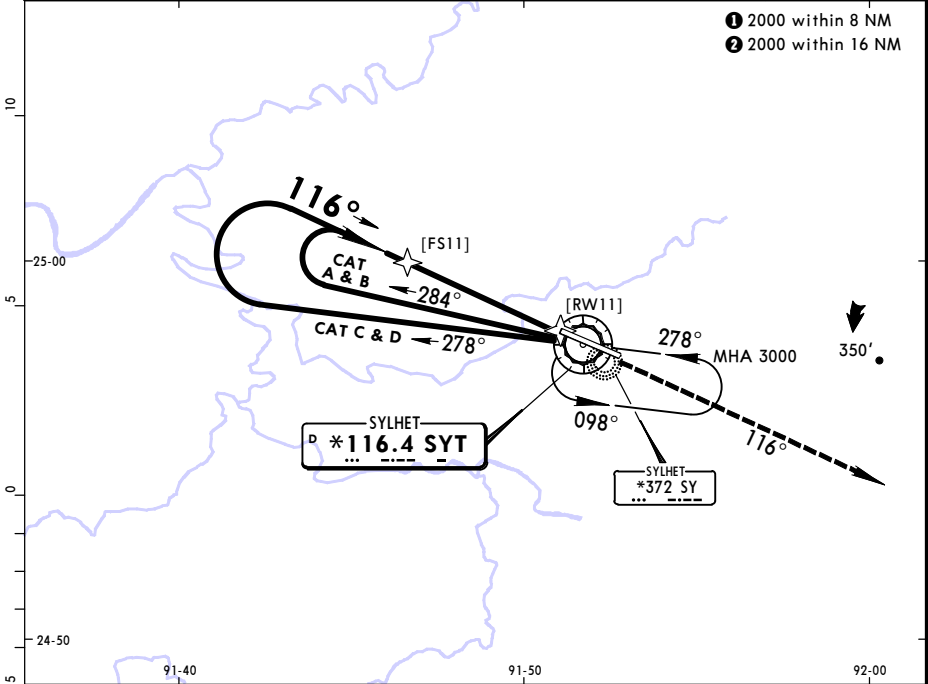
VOR SYT *116.4	Final Apch Crs 116°	Minimum Alt No FAF	MDA(H) Refer to Minimums	Apt Elev 50'
-------------------	------------------------	-----------------------	-----------------------------	--------------



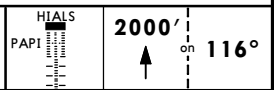
MISSED APCH: Climb on track 116° to 2000', then contact ATC.

Alt Set: hPa Apt Elev: 2 hPa Trans level: FL 60 Trans alt: 4000'
CAUTION: High hills 12 NM N, NE and NW of the airfield in India territory.

- ① 2000 within 8 NM
- ② 2000 within 16 NM



Gnd speed-Kts	70	90	100	120	140	160
Descent Angle 3.00°	372	478	531	637	743	849
MAP at VOR						



STRAIGHT-IN LANDING RWY 11

MDA(H) AB: 450' (400')
CD: 500' (450')

	ALS out
A	1600m / 2000m
B	2000m / 2400m
C	2400m / 2800m
D	

PANS OPS

VGSY/ZYL
OSMANI INTL

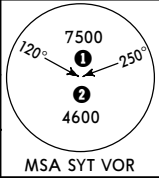
JEPPESSEN
4 OCT 19 (13-2) Eff 10 Oct

SYLHET, BANGLADESH
VOR Rwy 29

*SYLHET Tower

122.9

VOR SYT *116.4	Final Apch Crs 288°	Minimum Alt No FAF	MDA(H) Refer to Minimums	Apt Elev 50'
----------------------	---------------------------	-----------------------	--------------------------------	--------------

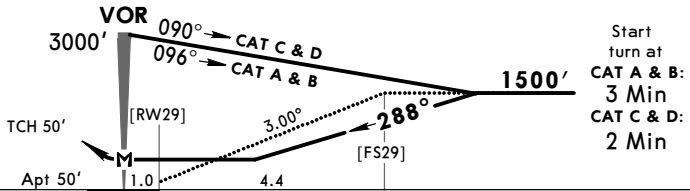
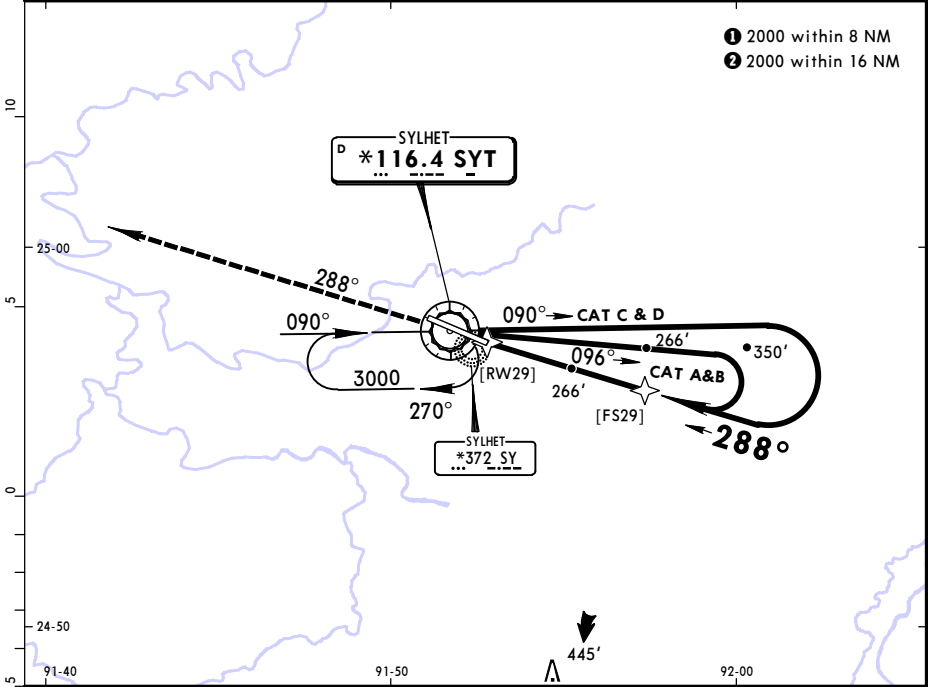


MISSED APCH: Climb on track 288° to 2000', then contact ATC.

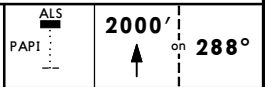
Alt Set: hPa Apt Elev: 2 hPa Trans level: FL 60 Trans alt: 4000'
CAUTION: High hills 12 NM N, NE and NW of the airfield in India territory.

MSA SYT VOR

- 1 2000 within 8 NM
- 2 2000 within 16 NM



Gnd speed-Kts	70	90	100	120	140	160
Descent Angle 3.00°	372	478	531	637	743	849
MAP at VOR						



STRAIGHT-IN LANDING RWY 29

MDA(H) AB: 450' (400')
CD: 500' (450')

		ALS out
A	1600m	2000m
B	2000m	2400m
C	2800m	
D		

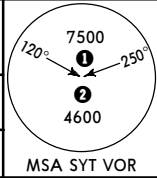
PANS OPS

*SYLHET Tower

122.9

BRIEFING STRIP™

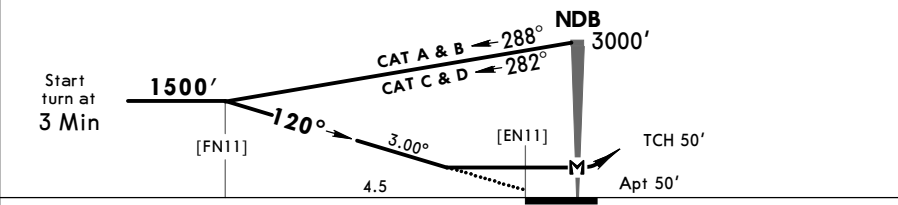
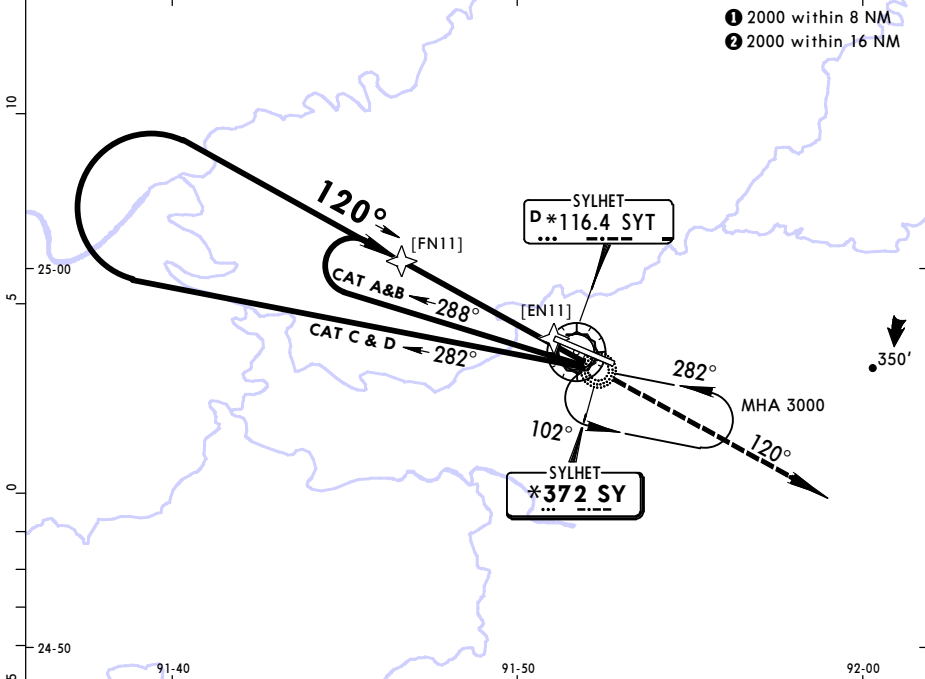
NDB SY *372	Final Apch Crs 120°	Minimum Alt No FAF	MDA(H) Refer to Minimums	Apt Elev 50'
-----------------------	-------------------------------	-----------------------	-----------------------------	--------------



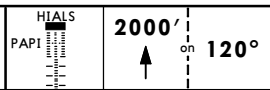
MISSED APCH: Climb on track 120° to 2000' and contact ATC.

Alt Set: hPa Apt Elev: 2 hPa Trans level: FL 60 Trans alt: 4000'
CAUTION: High hills 12 NM N, NE and NW of the airfield in India territory.

- ① 2000 within 8 NM
- ② 2000 within 16 NM



Gnd speed-Kts	70	90	100	120	140	160
Descent Angle 3.00°	372	478	531	637	743	849
MAP at NDB						

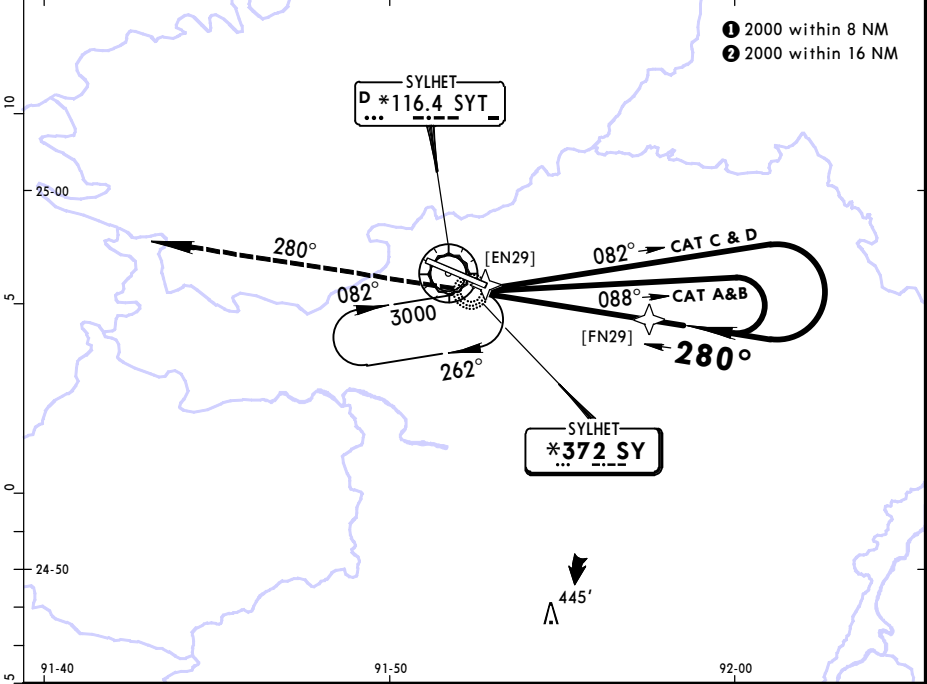
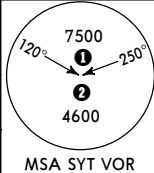


STRAIGHT-IN LANDING RWY 11
MDA(H) AB: **450'** (400')
CD: **500'** (450')

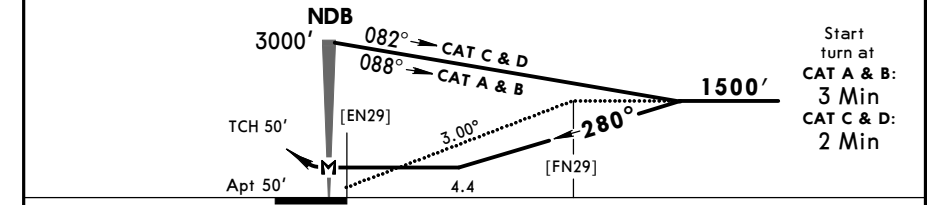
	ALS out
A	2000m
B	2400m
C	2800m
D	

PANS OPS

*SYLHET Tower			
122.9			
NDB SY *372	Final Apch Crs 280°	Minimum Alt No FAF	MDA(H) Refer to Minimums
			Apt Elev 50'
MISSED APCH: Climb on track 280° to 2000' and contact ATC.			
Alt Set: hPa		Apt Elev: 2 hPa	
		Trans level: FL 60	
CAUTION: High hills 12 NM N, NE and NW of the airfield in India territory.		Trans alt: 4000'	
			MSA SYT VOR



- ① 2000 within 8 NM
- ② 2000 within 16 NM



Start
turn at
CAT A & B:
3 Min
CAT C & D:
2 Min

Gnd speed-Kts	70	90	100	120	140	160	ALS PAPI	2000' ↑ on 280°
Descent Angle 3.00°	372	478	531	637	743	849		
MAP at NDB								

STRAIGHT-IN LANDING RWY 29	
MDA(H)	AB: 450' (400') CD: 500' (450')
ALS out	
A	1600m 2000m
B	2000m 2400m
C	2800m
D	2800m



Chart changes since cycle 21-2020

ADD = added chart, REV = revised chart, DEL = deleted chart.

ACT	PROCEDURE IDENT	INDEX	REV DATE	EFF DATE
-----	-----------------	-------	----------	----------

SYLHET, (OSMANI INTL - VGSY)



TERMINAL CHART CHANGE NOTICES

No Chart Change Notices for Airport VGSY