









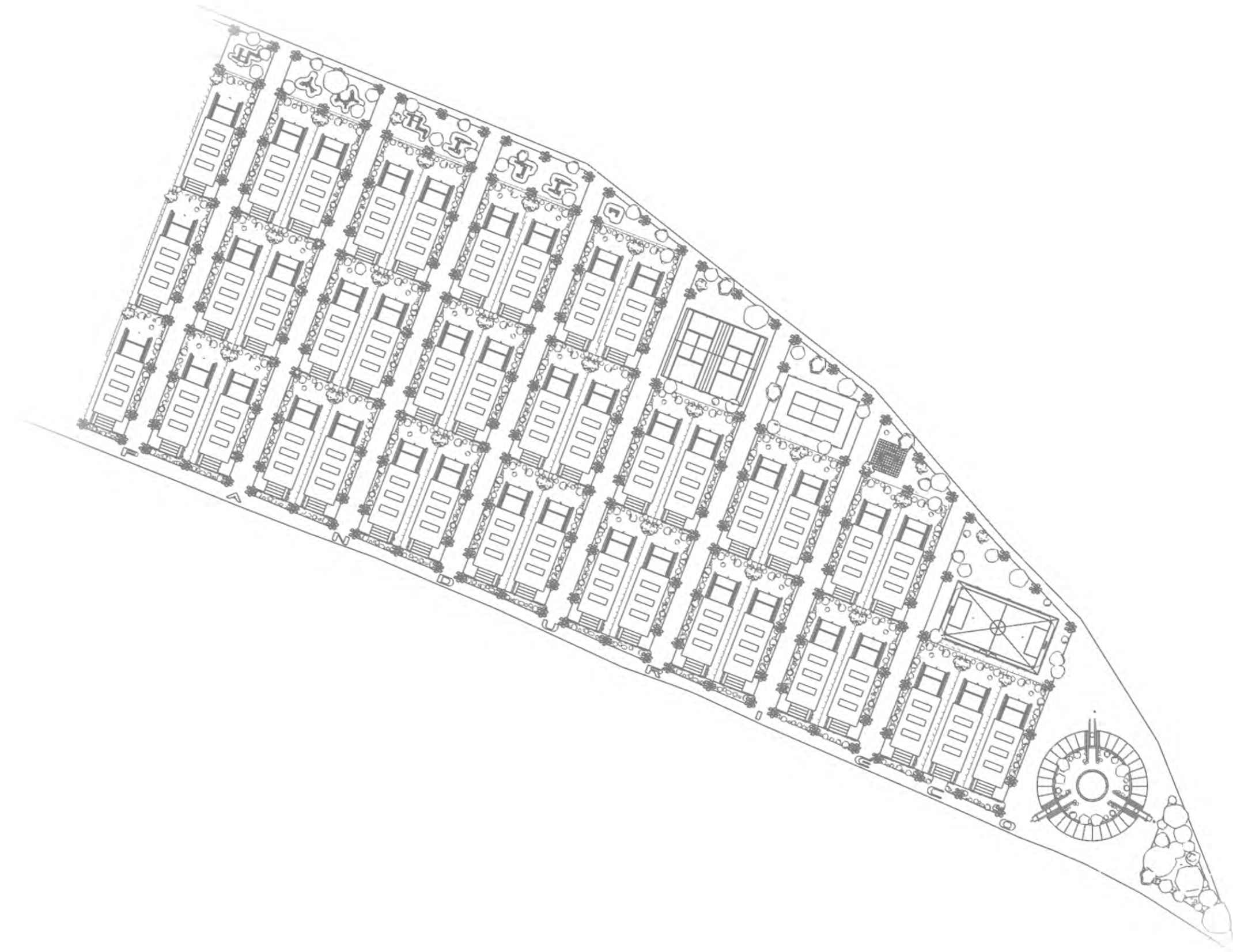






pandurilor  
village

**E**fficiency  
**C**omfort  
**O**mnivalence



**LOT**

- size ~ 14m x 40m
- surface ~ 560m<sup>2</sup>

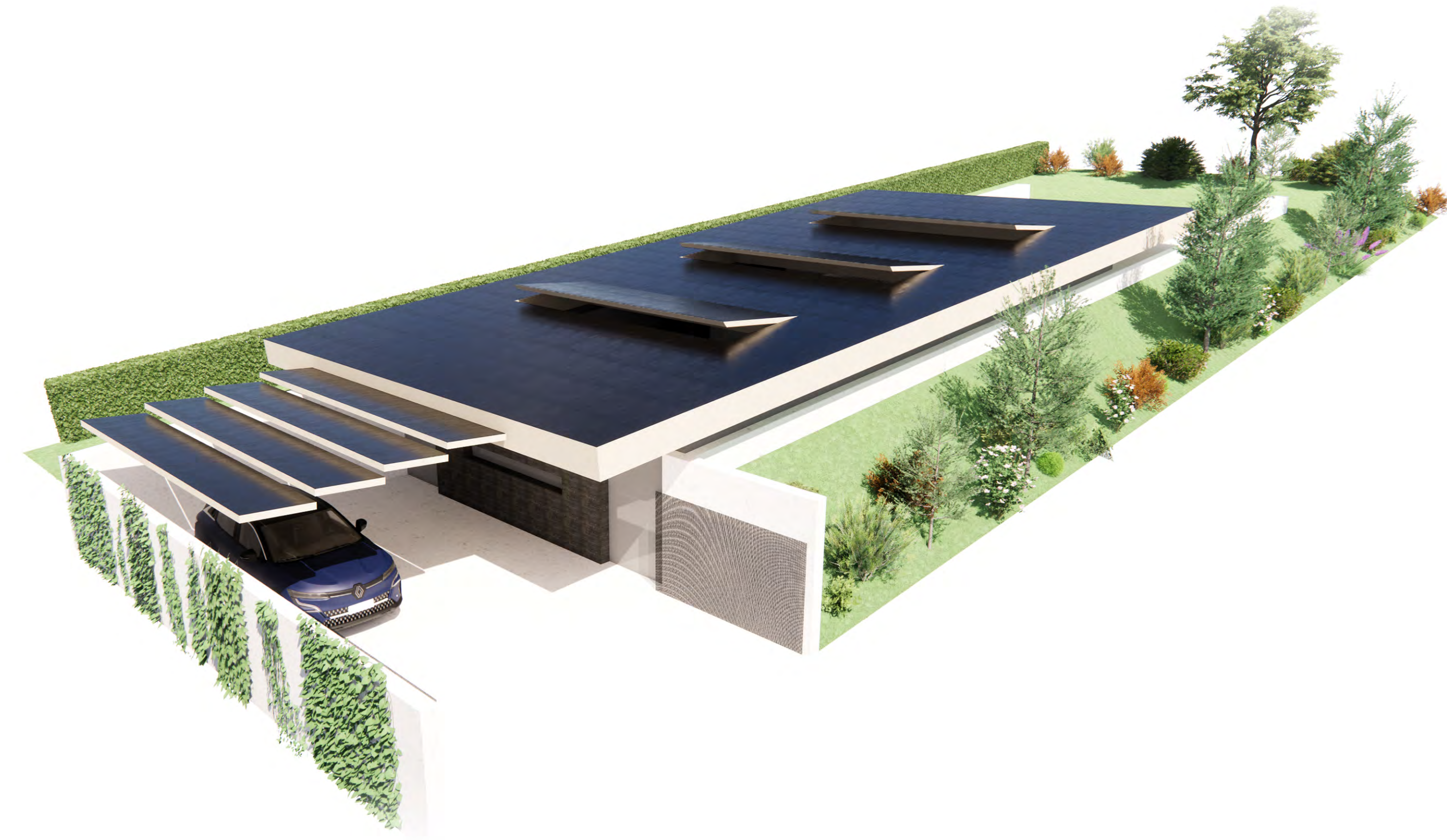
**HOUSE**

- footprint ~ 120m<sup>2</sup>\*
- first floor ~ 60m<sup>2</sup>\*
- total surface ~ 180m<sup>2</sup>\*
- frontyard ~ 60m<sup>2</sup>\*
- backyard ~ 60m<sup>2</sup>\*
- \* dimensions for the largest house model / sub-type

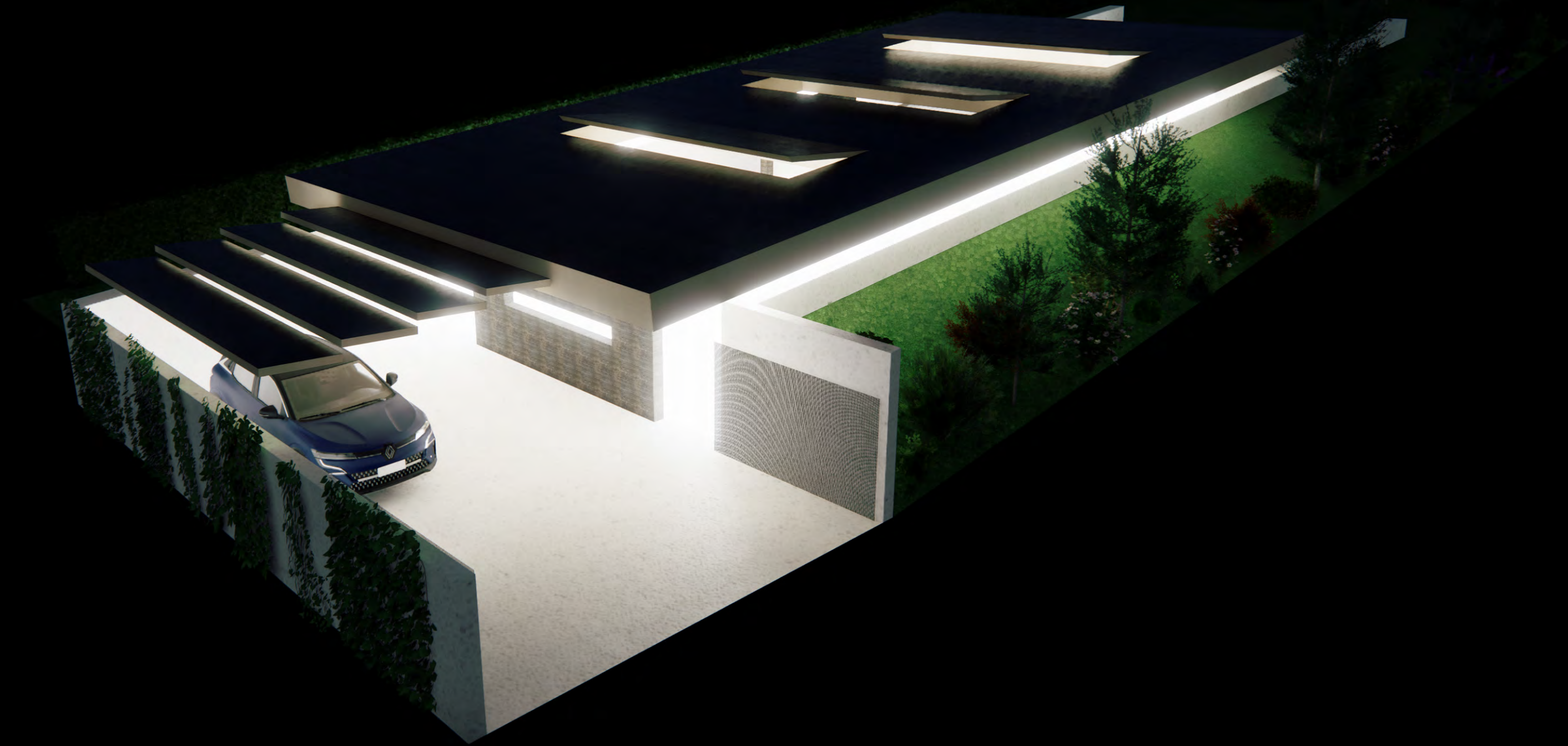
**GENERAL STATS**

- 42 individual houses fully autonomous (energy / water) (3 house sub-types)
- 1 central mixed common fully autonomous space (all types of events)
- 1 insidewarmed pool (underground) (optional)
- 1 mini-soccer field
- 1 calisthenics zone
- 1 volleyball / badminton field
- 2 tennis / basketball courts
- 8 playgrounds for children
- spots for optionally other sports / activities (table tennis, squash etc.)
- street / common spaces illumination fully autonomous (solar)

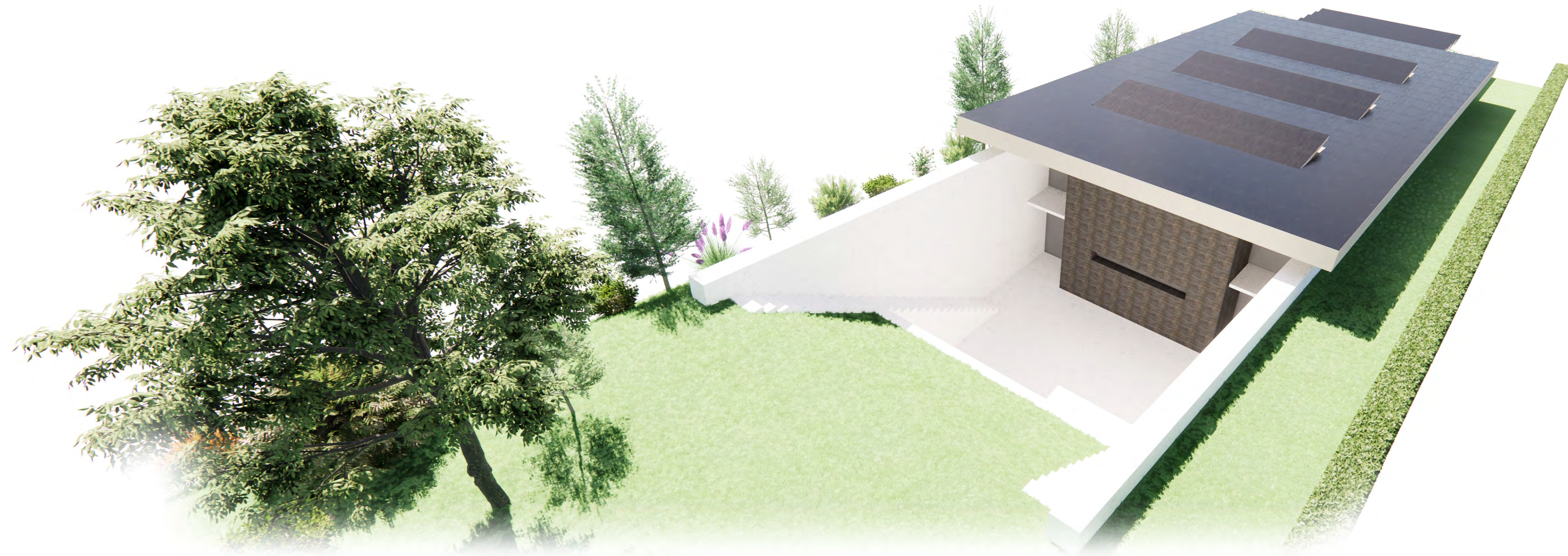




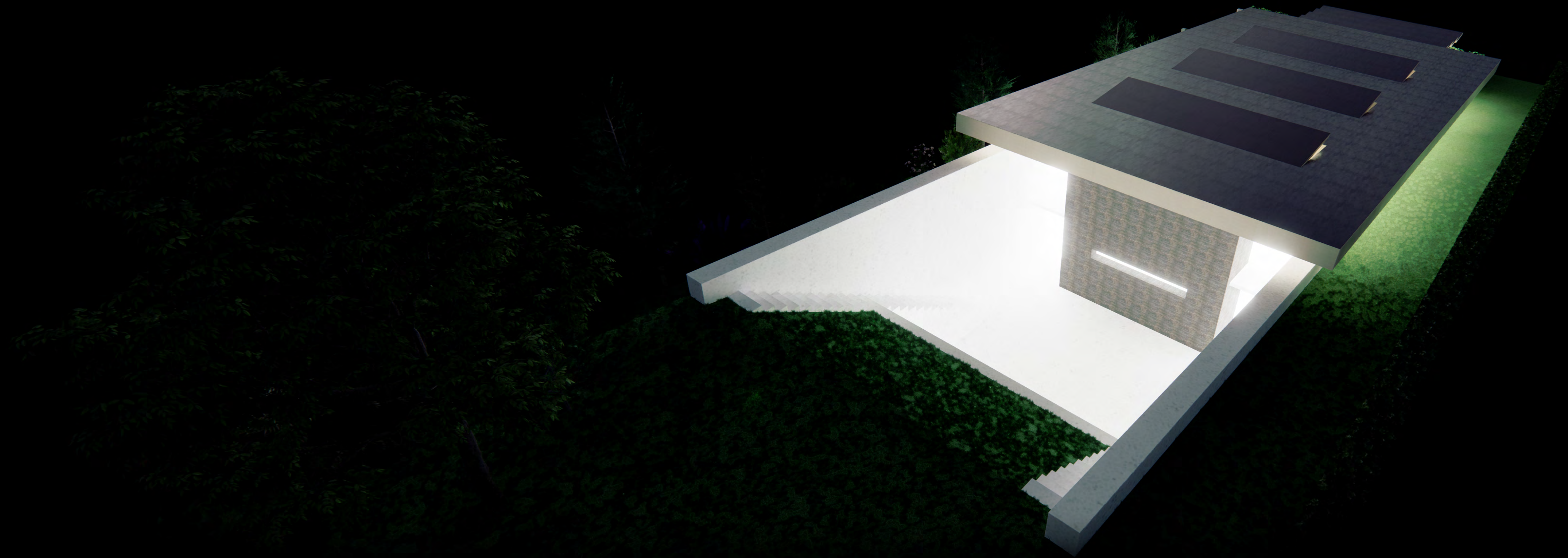




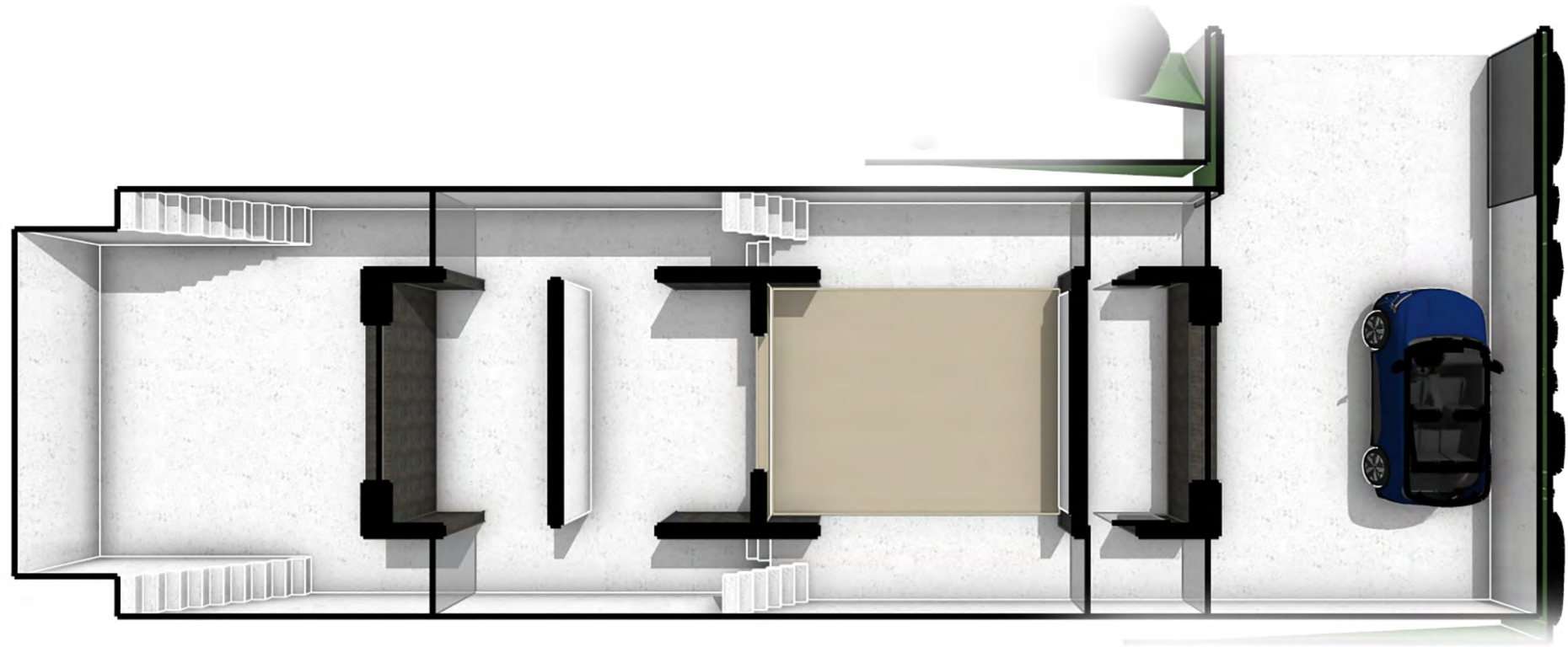




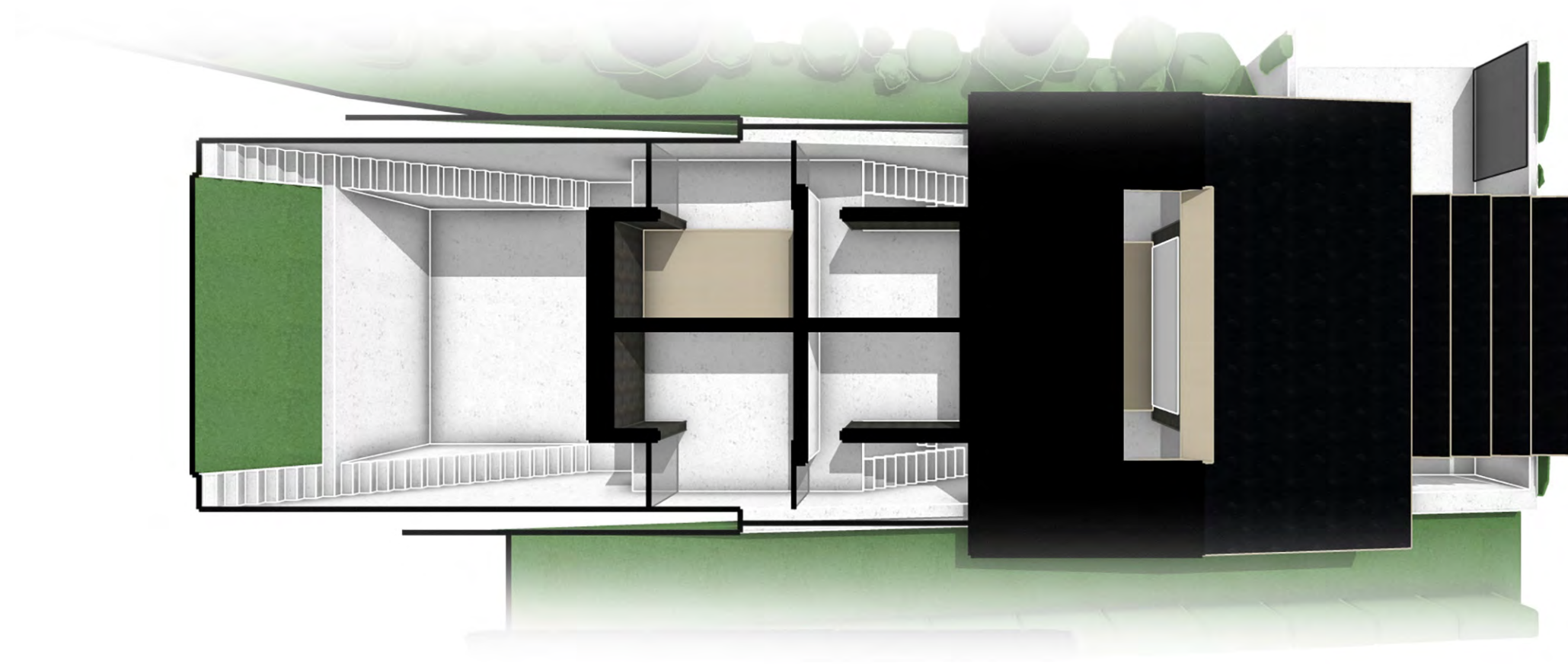




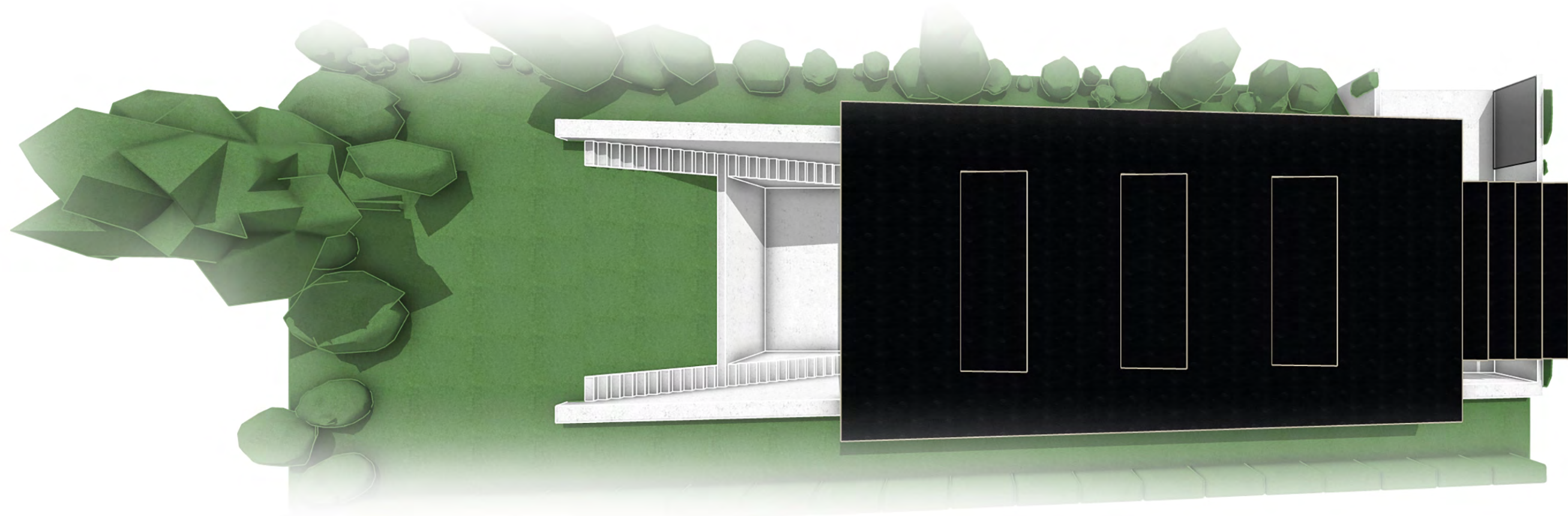
















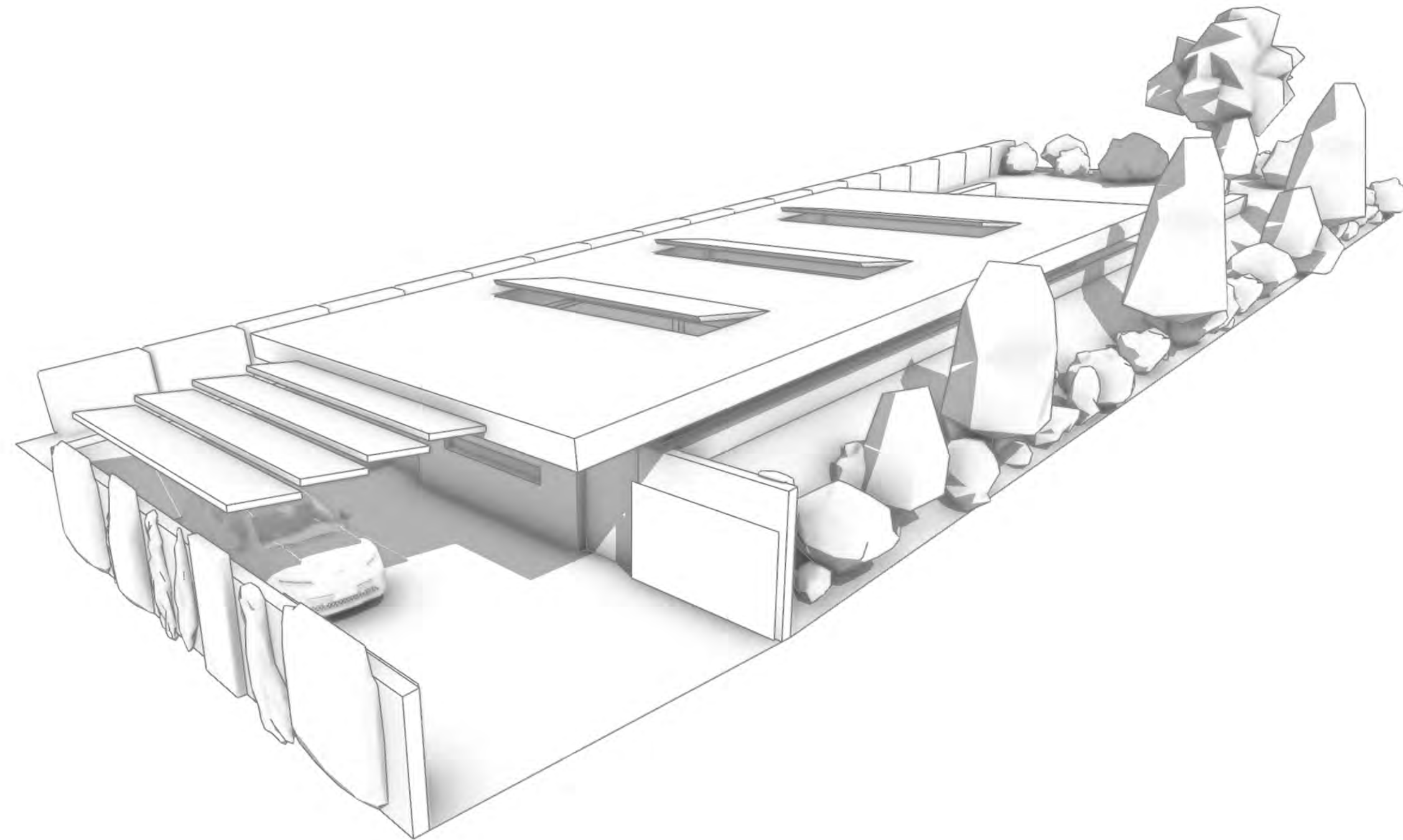


# pandurilor village

**E**fficiency

**C**omfort

**O**mnivalence



## LOT

- size ~ 14m x 40m
- surface ~ 560m<sup>2</sup>

## HOUSE

- footprint ~ 120m<sup>2</sup>\*
- first floor ~ 60m<sup>2</sup>\*
- total surface ~ 180m<sup>2</sup>\*
- frontyard ~ 60m<sup>2</sup>\*
- backyard ~ 60m<sup>2</sup>\*

\* dimensions for the largest house model / sub-type

## GENERAL STATS

- 1x frontyard (2-4 cars, partially covered)
- 1x office (frontyard / acces view)
- 2x main acces halls
- 1x livingroom (cinematic configuration)
- 1x kitchen (directly linked to the livingroom + backyard acces)
- 2x sets of stairs @ 1st floor / basement (kitchen, storage, workshop)
- 2 WC + shower (living-room / kitchen adiacent)
- 2 complete bathrooms (1st floor) (acces from the 2x hallways)
- 2 bedrooms & dressings (1st floor) (acces from the 2x hallways)
- 2 loggias / balconies (or 1x monolithical balcony, optionally)
- 1x backyard (fully equiped for all personal sports: fitness, tennis-table, basketball, squash etc.)
- 1x continuous green yard

## SPECIAL ELEMENTS

- full reinforced waterproof polished white concrete envelope
- passive house level insulation and closures (doors / windows / skylights)
- complete autonomy (full solar roof + water well)
- side roof natural indirect illumination
- top roof illumination
- 2x covered parking spots (4 total) (arching doors)
- full security with metallic stores (app / web controlled)