

BRANCH DIRECTOR STRUCTURAL COLLAPSE

**MABAS Division 2
Operational Checklist
#21-S**
EFFECTIVE 02/01/10
Reviewed 6/23/21

Type of Strategy: Rescue Recovery – secure site waits for TRT

Responsibilities

- Meet with Incident Command and Safety to review initial operations
- Assist Command and Safety in the development of an action plan
- Consider establishment the following Groups:
 - Technical Safety
 - Building Triage
 - Building Search
 - Victim Rescue / Recovery
- Consider need for additional TRT resources and heavy equipment
- Provide Incident Command with periodic updates of the rescue operation
- Utilize the USAR Building Collapse Field Operation Guides as necessary (located in the squad)

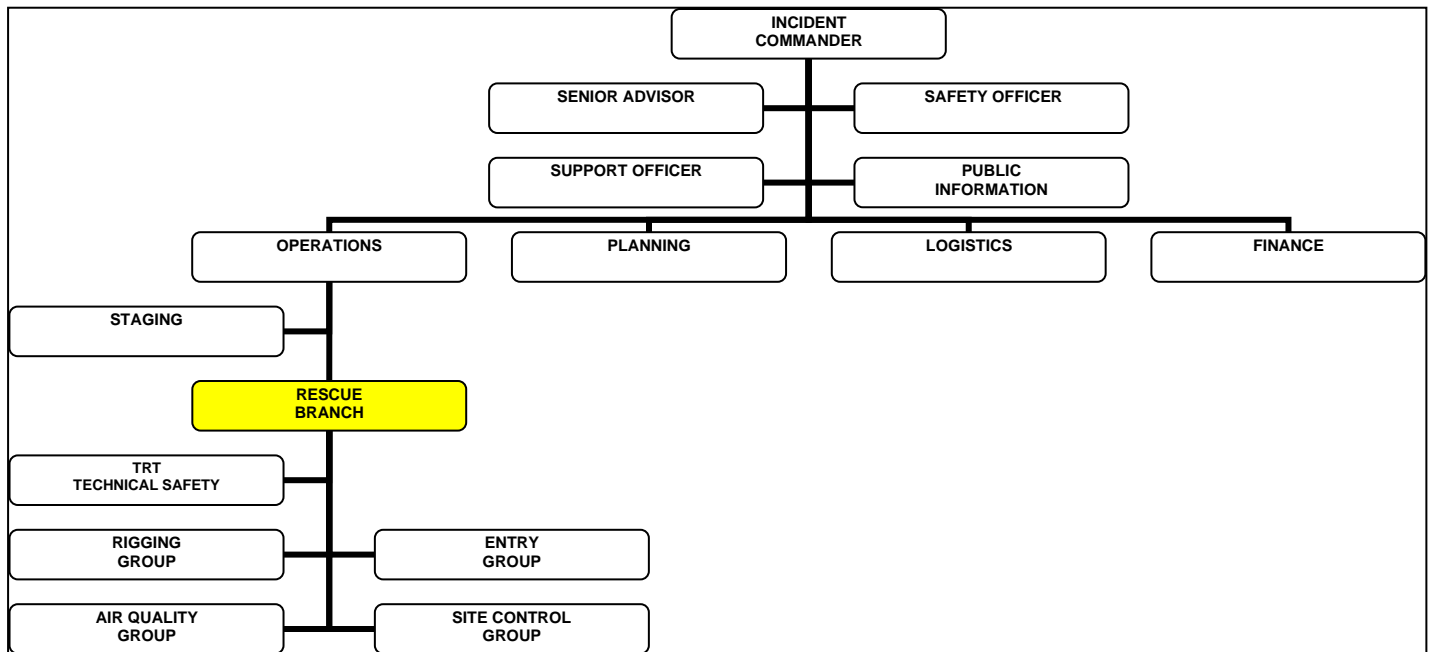
Brief statement of Incident Action Plan

BRANCH DIRECTOR

RADIO DESIGNATION: RESCUE **CHANNEL:** _____

REPORTS TO: IC, OPS SECTION OR BRANCH DIRECTOR

REPORTS TO YOU: TASK FORCES/STRIKE TEAMS, SINGLE RESOURCES



Rescue Branch (Team Leader) (TRT member)

Responsible for coordination of the actual rescue operation and the Groups associated with all activity in the "rescue area." Reports directly to Operations or in the absence of Operations, Incident Command.

Site Control Group (Fire personnel)

Responsible for establishing control zones, fire suppression, logistics of incoming resources, placement of apparatus and lighting systems. Reports directly to Rescue Branch.

Building Triage (TRT members)

Responsible for evaluation of the collapsed structure(s). Will identify best access, hazards, and shoring needs.

Building Search (TRT members)

Responsible for searching buildings and identifying the location of victims.

Building Triage (TRT members)

Responsible for the removal of victims from the collapse area.

Technical Safety (TRT member)

Responsible for observing and evaluating all technical aspects of the rescue. Works directly with the fire department safety officer. Reports to Incident Command, Safety, and Rescue Branch.

Medical Group (Paramedic)

Responsible for establishing a medical treatment area for the treatment of victim(s) and rescue personnel, as well as establishing a rehab Group.

Initially limited TRT manpower may require combining one or more Groups. The use of fire suppression personnel is an integral part of successfully performing a rescue.