

BRANCH DIRECTOR TRENCH RESCUE

MABAS Division 2 Operational Checklist #24-S

EFFECTIVE 02/01/10
Reviewed 6/23/21

Type of Strategy: Rescue Recovery – secure site waits for TRT

Responsibilities

Meet with Incident Command and Technical Safety to review initial operations

Ensure or establish the following Divisions/Groups:

- Site Control Group
- Equipment / Rigging Group
- Air Quality Group
- Entry Group

Coordinate all activities related to the actual rescue operation

Provide Incident Command with periodic updates of the rescue / recovery operation

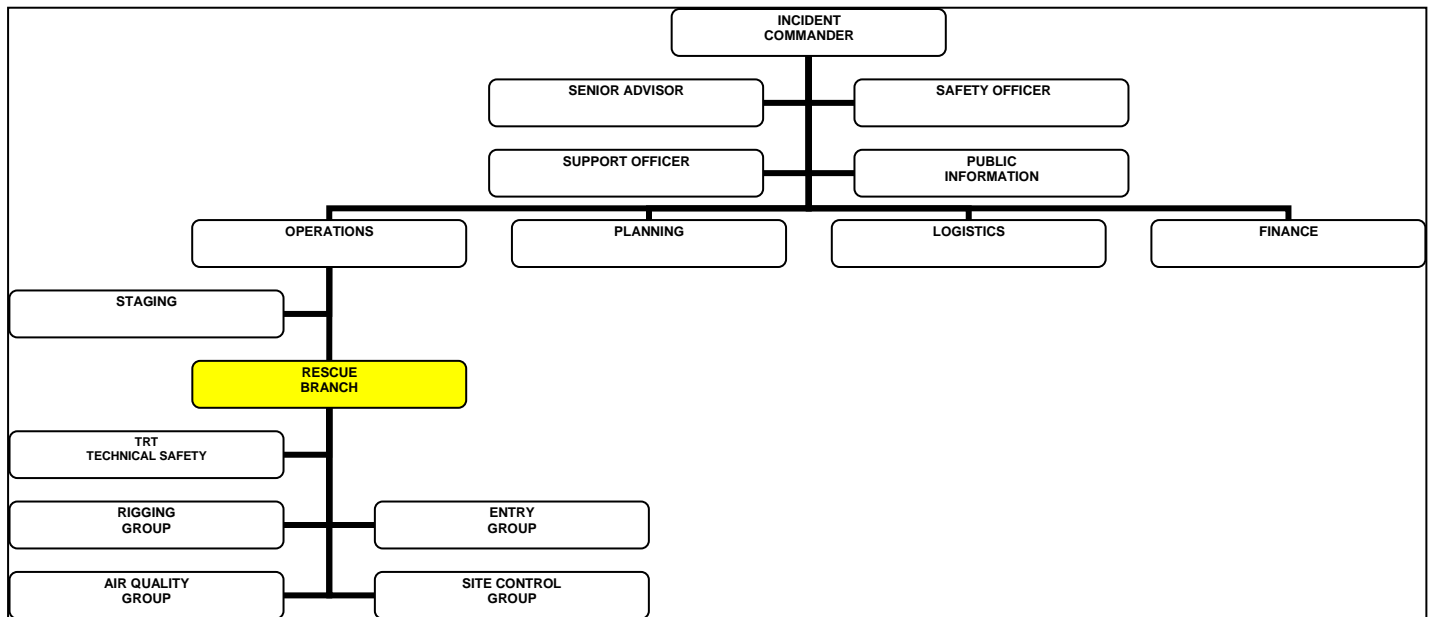
Brief statement of Incident Action Plan

BRANCH DIRECTOR

RADIO DESIGNATION: RESCUE **CHANNEL:** _____

REPORTS TO: IC, OPS SECTION OR BRANCH DIRECTOR

REPORTS TO YOU: TASK FORCES/STRIKE TEAMS, SINGLE RESOURCES



Rescue Branch (Team Leader) (TRT member)

Responsible for coordination of the actual rescue operation and the Groups associated with all activity in the "rescue area." Reports directly to Operations or in the absence of Operations, Incident Command.

Site Control Group (Fire personnel)

Responsible for establishing control zones, fire suppression, logistics of incoming resources, placement of apparatus and lighting systems. Reports directly to Rescue Branch.

Equipment / Rigging Group (Fire personnel and TRT member)

Responsible for the establishment of an equipment Group site, and the physical stockpiling of equipment necessary to perform the rescue. Rigging may become a separate Group responsible for the installation of the protective system. Reports directly to Rescue Branch.

Air Quality Group (Fire personnel and TRT member)

Responsible for continuous atmospheric monitoring / ventilation of the trench. Reports directly to Rescue Branch.

Entry Group (TRT members)

Responsible for ensuring all entry personnel are properly equipped to enter the trench to perform digging and prepare victim(s) for removal from trench. Reports directly to Rescue Branch.

Technical Safety (TRT member)

Responsible for observing and evaluating all technical aspects of the rescue. Works directly with the fire department safety officer. Reports to Incident Command, Safety, and Rescue Branch.

Medical Group (Paramedic)

Responsible for establishing a medical treatment area for the treatment of victim(s) and rescue personnel, as well as establishing a rehab Group.

Initially limited TRT manpower may require combining one or more Groups. The use of fire suppression personnel is an integral part of successfully performing a rescue.