

2025

Putt's Camp Guidebook



# Putt's Camp FRL

*Friends of Raystown Lake*



## Putt's Camp Guidebook

### WELCOME TO PUTT'S CAMP

The GPS coordinates for Putt's Camp are:  
**N 40° 15.667', W 078° 12.502'**

Putt's Camp offers 26 acres of open field and wooded areas. The camp boasts a total of 300 yards of frontage on Raystown Lake, which is accessible by boat. Putt's Camp is bordered by the Rothrock State Forest. The camp is also accessible by the Terrace Mountain Trail which is a dirt road; during extreme weather conditions a four wheel drive vehicle is strongly recommended. Putt's Camp has a dedicated parking area for all vehicles and two additional overflow parking areas.

Among the amenities, there is a Picnic Pavilion (30' x 45') including 10 picnic tables, enough for seating 80 persons. Among the newest structures on the grounds are 2 – (12' x 16') Adirondack Shelters complete with a (14' x 16') picnic shelter, picnic table and raised charcoal grill. Each Adirondack Shelter has a campfire area with two 8-foot benches, ideal for a peaceful evening enjoying the outdoors or toasting that perfect late night snack. If an Adirondack shelter is not your style, and you opt for the ultimate tent camping experience, we have five (5) wooded campsites, two (2) campsites that are in the open area of the camp and one (1) campsite on the shore of the lake.

The amenities don't stop there as there is a vintage (circa 1970's) latrine that provides separate male and female (pit toilet) restroom facilities which is centrally located in the camp. To meet your groups religious needs, an All Faith Chapel with a view of the lake, is located within the quiet forest on the southern end of the camp. At present time, a shallow well with a hand pump is located on the camp property and the water is tested quarterly to insure that the water is potable.

As can be expected at a primitive camping area, there are Hiking Trails, Winter Camping opportunities, Fishing, Knife/Axe Throwing Targets, Group Campfire Area, Swimming, Canoeing and Boating all available on or around the camp grounds.

In order to make the camping experience pleasant for all who attend Putt's Camp, no alcoholic beverages are permitted within the camp boundaries.



# Table of Contents

WELCOME TO PUTT’S CAMP.....	2
DRIVING DIRECTIONS TO PUTT’S CAMP .....	4
Traveling via PA Turnpike.....	4
Traveling from the South .....	4
Traveling from the North .....	6
HOW TO OPEN THE GATE LOCKS.....	6
SEVERE WEATHER.....	8
POTABLE WATER SUPPLY .....	9
LATRINE - SANITARY CONDITIONS for the MALE & FEMALE CAMPERS .....	9
SAFETY AFLOAT – WATER SAFETY IS IMPORTANT TO EVERYONE.....	10
FIRE SAFETY and REFUSE DISPOSAL .....	10
CHAINSAW USAGE AT CAMP.....	11
PUTT’S CAMP PANTRY/STORAGE BUILDING .....	11
THE ELECTRICAL PANEL & ELECTRICITY USAGE .....	11
THE PANTRY/STORAGE AREA .....	12
CHECK-IN AND CHECK-OUT .....	13
<i>Friends of Raystown Lake</i> Check-In List.....	13
<i>Friends of Raystown Lake</i> Check-Out List .....	15
APPENDIX.....	17
PUTT’S CAMP USGS MAP .....	18
PUTTS CAMP SITE MAP.....	19
Areal View of Putt’s Camp.....	20
EMERGENCY CONTACT INFORMATION .....	21
CAMPING PERMIT .....	22
PUTT’S CAMP RESERVATION FEES AND PAYMENT SCHEDULE.....	23

## DRIVING DIRECTIONS TO PUTT'S CAMP

### Location of Putt's Camp relative to the gates and the Weaver's Falls Boat Launch

The two gates that you can access Putt's Camp and the Terrace Mountain Trail from are Gate 36 at the Weaver's Falls Entrance and the Lake Raystown Resort Gate inside the resort.

The Putt's Camp Turn-Off is located exactly 3 miles from both gates. After turning on the road to Putt's Camp from the Terrace Mountain Trail it is 1/2 mile to the camp.

If you want to access Putt's Camp by boat you would follow the directions to Weaver's Falls Road and when you get to the bottom of the hill, instead of going straight ahead you would turn left and cross the bridge across the River.

On the other end of the bridge you would turn right and follow Weaver's Falls Road to the boat launch access road.

Turn right on the boat launch access road into the boat launch area.

Putt's Camp is located on the right about 3 miles north on the river. The mile marker at the Weaver's Falls Boat Launch is 28 miles. That means you are 28 miles from the dam.

### Traveling via PA Turnpike

If you are traveling from the east or west on the Pennsylvania Turnpike, exit the Turnpike at Breezewood (exit 161). Take the exit ramp for Route US 30 west and travel toward Everett.

When you start onto the Everett By-Pass take the first exit ramp to PA 26 Raystown Lake. Travel on PA 26 to the intersection of PA 26 & PA 913. There is a flashing signal at the intersection.

Turn right onto Pennsylvania Route 913 East and travel across the bridge and into Saxton. Proceed straight through the traffic signal at the intersection of PA 913, Main Street and 8th Street and in two blocks PA 913 turns left on 6th Street and goes down the hill.

Stay on PA 913 through the settlement of Puttstown. At the end of Puttstown there is a bridge. You cross the bridge and immediately turn left at the intersection onto Weaver's Falls Road.

At the top of the hill keep right to stay on Weaver's Falls Road. At the bottom of the hill is the intersection of Weaver's Falls and Terrace Mountain Trail. Straight ahead is Gate 36 which you need to go through. **Do Not Cross the bridge across the River.**

The coordinates for the intersection of Weaver's Falls Road and Terrace Mountain Trail are:  
N 40° 14.093      W 78° 13.158

The 911 Address for this intersection is **19467 Weaver's Falls Road.**

Refer to the map insert of the intersection.

### Traveling from the South



If driving from the south to Putt's Camp take I-70 West to Breezewood. (Interstate 70 runs south to north between Hancock, MD and Breezewood, PA.)



Turn left in Breezewood at the intersection of I-79 and US 30 and travel west on US 30 toward Everett.

When you start onto the Everett By-Pass take the first exit ramp to Pennsylvania Route 26 North towards Raystown Lake. Travel on Pennsylvania Route 26 North to the intersection of PA 26 & PA 913. There is a flashing signal at the intersection.



Turn right onto Pennsylvania Route 913 East and travel across the bridge and into Saxton. go straight through the traffic signal at the intersection of PA 913, Main Street and 8th Street and in two blocks PA 913 turns left on 6th Street and goes down the hill.



Stay on PA 913 through the settlement of Puttstown. At the end of Puttstown there is a bridge. You cross the bridge and immediately turn left at the intersection onto Weaver's Falls Road.



At the top of the hill turn right to stay on Weaver's Falls Road. At the bottom of the hill is the intersection of Weaver's Falls and Terrace Mountain Trail. Straight ahead is Gate 36 which you need to go through. **Do Not Cross the bridge across the River.**

The coordinates for the intersection of Weaver's Falls Road and Terrace Mountain Trail are:  
N 40° 14.093      W 78° 13.158

The 911 Address for this intersection is **19467 Weaver's Falls Road.**

Refer to the map insert of the intersection.



## Traveling from the North

If driving from the north to Putt's Camp, travel to Huntingdon, PA. At Huntingdon take Pennsylvania Route 26 South.

Travel to the intersection of PA 26 and PA 994 near Entriiken, PA.

Turn left on PA 994 and travel to the entrance of Lake Raystown Resort. Pennsylvania Route 994 intersects Chipmunk Crossing Road at the resort entrance. (Refer to the map insert Pin at the intersection)

The coordinates for the above intersection are as follows:  
**N 40° 18.343      W 078° 10.410**

Turn right onto Chipmunk Crossing Road and travel to the (Map insert Pin for the Guard Shack).

Turn left onto Nugget Run Road and travel just past the Pine Cabins on the right to the (Map insert Pin for the Maintenance Building).

Turn left on the road to the Maintenance Building and travel up the hill to the gate for Terrace Mountain Trail. (Refer to map insert Pin TMT Gate)



### HOW TO OPEN THE GATE LOCKS

The lock on the gates is a Master Combination Lock and labeled FRL.

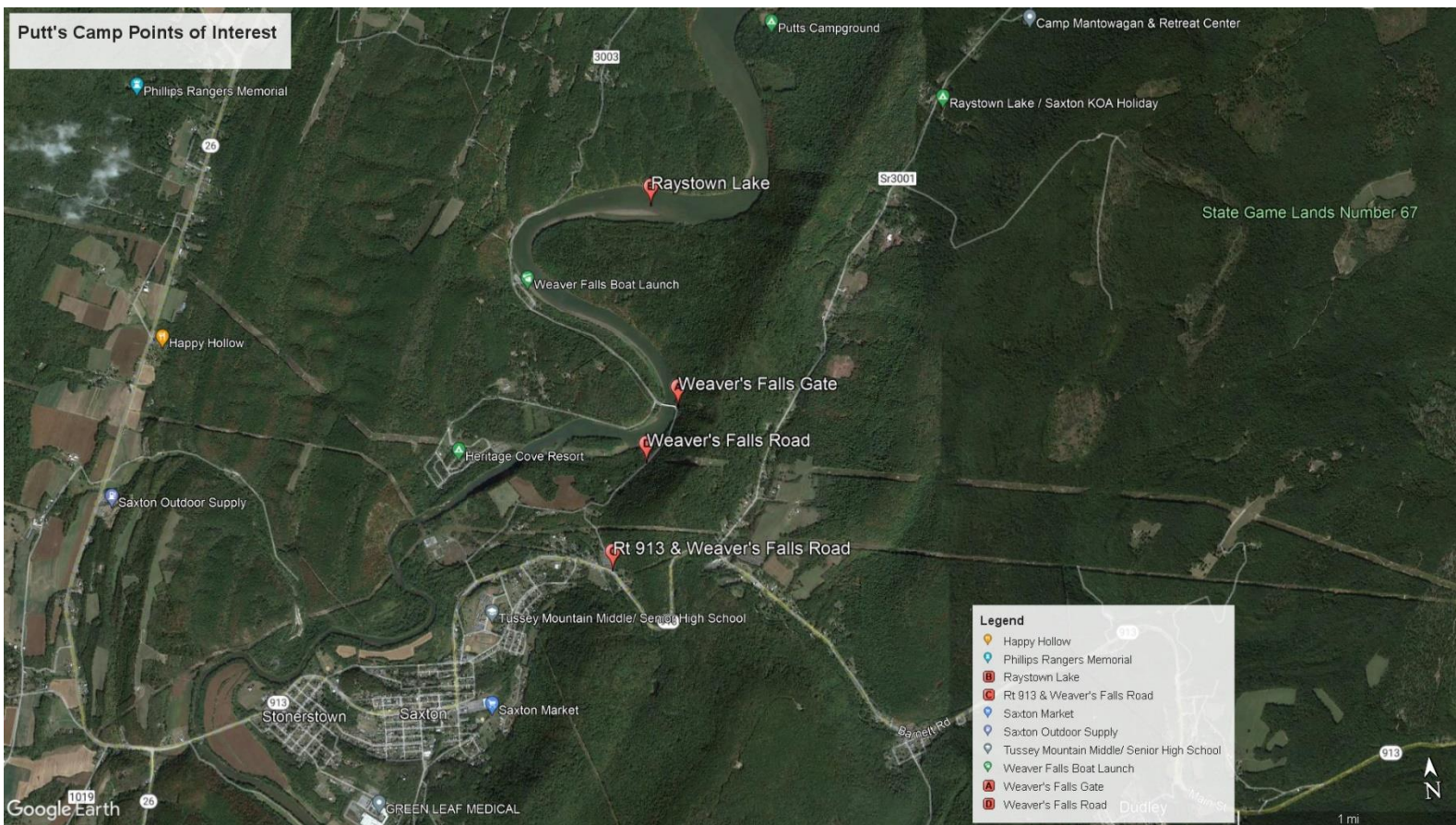
The combination is a four digit number. The combination is set on the bottom of the lock. After you set the four numbers on the bottom of the lock, you must push in on the shackle for the lock to release.



After opening the gate and driving through you must lock the gate behind you.

To lock the lock you must rotate the numbers on the bottom of the lock to numbers other than the combination and after putting it on the gate, push in on the lock for it to catch and lock.

The Corps of Engineers requires us to keep the gates locked at all times.



## SEVERE WEATHER

Severe weather hazards, such as tornadoes, lightning, hail, flash flooding, and downbursts, can be dangerous. Each requires a basic understanding of what to do so that you can protect yourself and your Campers. The scale of weather conditions can seem daunting – ranging from high heat with no humidity to torrential downpours with possible flooding.

However, some key basic principles can help everyone prepare. Here are a few for you to consider:

1. Know the weather forecast before you set out on your trip.
2. Prepare for the types of weather hazards that are associated with your destination, such as tornadoes, lightning, snow, torrential rains, and high winds.
3. Double-check weather conditions immediately upon arrival to verify forecasts.
4. The weather can be integral in becoming lost or injured. If visibility becomes limited, respond quickly to gather the Campers in your care.
5. Inquire about the location of any designated emergency shelters in the area.

You may never encounter a severe weather hazard. Your chances of being hit by lightning in your lifetime are 1 in 700,000, and the chances of your home being destroyed by a tornado (if you live in tornado alley) are 1 in 150,000. By learning and following these key principles, you can move forward with confidence and provide every opportunity to your Campers to participate in outdoor activities safely.

It is recommended that Group Leaders take some kind of Weather Related Training. A good reference can be found at the following Web Site:

<https://www.ready.gov>

There is also a FEMA weather related training course available to the public called, FEMA Hazardous Weather Primer and can be found at the following Web Site:

<https://www.millersville.edu/cdre/files/cert-information/units/unit0-hazardousweather.pdf>

It has been determined that at Putt's Camp the safest location in camp during an Electrical Storm is in a vehicle parked in the camp parking lot. The second safest place would be in the middle of the open field, stooped down supporting yourself on the balls of your feet and keeping your head forward making yourself as low to the ground as possible. Other than these two choices you just have to take your chances that you won't be struck by lightning.





## POTABLE WATER SUPPLY



The water supply at Putt's Camp is provided by a hand pump installed above a well that was drilled in the 1970's by the US Army Corps of Engineers when Putt's Camp was established as a Boat-to-Shore Campground. A recently completed Water Project has made water available via an electric submersible pump to the picnic pavilion.

If at any time a water sample is taken and it is determined that water is not Potable, the Camp Pump will not be available for use (the handle will be taken off), and the campers will have to acquire Potable Water from another source, until the Pump Water is tested with satisfactory results.

## LATRINE - SANITARY CONDITIONS for the MALE & FEMALE CAMPERS

There is a Pit Latrine at Putt's Camp that was constructed when Putt's Camp was first opened by the US Army Corps of Engineers as a boat-to-shore campground.

The Latrine has a male and female side. The male side has two (2) urinals and two (2) commodes. The female side has four (4) commodes. The information provided to Putt's Camp campers indicates that the Latrines should be swept out (leaves, grass and trash) each day, and the commodes and urinals are to be swabbed with pine oil cleaner/deodorizer to provide a pleasant smell and disinfect the commodes and urinals. The last step in the cleaning process is to carry buckets of water from the well (pump) to rinse the commodes and urinals and flush the floor, followed by sweeping the water outside.



There are plastic coffee containers provided in the Pantry/Storage Building (P/SB) to use in the latrine to store the toilet tissue, so the vermin will not use it for their purposes. Remember to check the toilet tissue supply each day when you clean the latrine. The containers are to be returned to the (P/SB) when your stay at Putt's Camp ends.

All foods that are prepared should be cooked to the recommended serving temperatures to kill any bacteria that may be present prior to cooking. The food then should be served before the temperature has a chance to decrease to an unacceptable value which would promote the growth of bacteria.

Any leftovers saved for another meal must be stored in an ice chest to an acceptable temperature to prevent the growth of bacteria.

## SAFETY AFLOAT – WATER SAFETY IS IMPORTANT TO EVERYONE



All Water Craft used on Raystown Lake should be inspected by a qualified person, to determine if they are seaworthy, prior to being used by campers on Raystown Lake.

All campers on Raystown Lake, in a water craft, **MUST** follow the Pennsylvania Fish and Boat Commission Regulations. These Regulations can be found at the following Web Site:

<https://www.fishandboat.com/Boat/BoatingRegulations/Documents/brochure.pdf>

A Buddy Board is located on the shore of the lake at Putt's Camp. It is recommended that all participants, on Raystown Lake use the Buddy System and hang their Buddy Tags on the Board, prior to participating in any activities **On or In the Lake**. This Buddy System allows the Camp Supervisor to know who is **OUT ON or IN the Water at any time**. Therefore, this also applies to campers that go swimming. All swimming activity must be supervised by a mature and conscientious adult, age Twenty One (21) or older that understands and knowingly accepts the responsibility for the well-being and safety of those in his or her care and must be present to monitor their activities.

## FIRE SAFETY and REFUSE DISPOSAL

All Wood and Charcoal fires, that are built at Putt's Camp, in the Pavilion Fireplace, the Concrete Fire Rings or in the Adirondack Shelter Pavilion Charcoal Grills; must be built and started without the use of a Fire Accelerant, such as Fuel Oil, Lighter Fluid, Kerosene, Charcoal Lighter or Gasoline. It is acceptable to use Wood Tinder, Paper, Cardboard, Fatwood or Cotton Balls covered with Vaseline to assist in starting a fire.



- A fire is a self-sustaining, exothermic oxidation reaction that emits heat and light. When a fire is accelerated, it can produce more heat, consume the reactants more quickly, burn at a higher temperature, and increase the spread of the fire. An accelerated fire is said to have a higher "heat release rate," meaning it burns more quickly.
- When Extinguishing a Fire in the Fireplace at the Pavilion, the Charcoal Grills or the Concrete Fire Rings, **Please do not pour water on them**. Spread the fire out and if necessary you can sprinkle water on the fire to cool it and it will go out. When you dump water on the fire you cool the receptacles too quickly and the Fire Bricks in the Fireplace may Crack, the metal in the Charcoal Grills will warp and the Concrete Rings will Crack.

All gasoline brought to camp for Generators, Boat Engines or Chainsaws must be stored in an Approved method. It is strongly recommended that only Adults have access to the gasoline. **Under no circumstances are flammables to be stored in the Pantry/Storage Building.**

**No Garbage or Plastic** is to be burned in the Pavilion Fire Place, the Adirondack Shelter Pavilion Charcoal Grills or any of the Camp Concrete Fire Rings.

**All Refuse** is to be placed in acceptable Plastic Trash Bags and either taken home with you or deposited in the US Army Corps of Engineer's Refuse Dumpster, located at the Weaver's Falls Boat Launch.

## **CHAINSAW USAGE AT CAMP**

Whenever you use a chainsaw to cut firewood or to clear a tree from the road, you must follow the US Army Corps of Engineers regulations and wear the following Safety Equipment: Protective Chaps, Gloves, Helmet, Ear and Eye Protection. There is an abundance of wood available at camp to cut for firewood. There is a bucksaw and Chopper One Splitting Axe in the (P/SB) for your use. Any wood splitting is to be done in a safe area (Marked off with Caution Tape) on a log chopping block and away from any buildings. **If you split wood on the concrete floor in the Pavilion or (P/SB) you will forfeit your \$100.00 Camp Deposit.**



## **PUTT'S CAMP PANTRY/STORAGE BUILDING**

The new Pantry/Storage Building (P/SB) was constructed to provide storage in one side for the controls for the new Solar System and the future water supply system. The other side of the building houses the Electrical Panel for the Solar System, a 15 Amp receptacle, a switch for the inside building light and a switch for the outside building light.

## **THE ELECTRICAL PANEL & ELECTRICITY USAGE**



The Electrical Panel houses the main breaker, a 15 Amp Breaker for the 15 Amp receptacle on the outside of the building and one inside the building, a 15 Amp double breaker for the Pavilion Lights and the two 15 Amp receptacles under the Pavilion. The 15 Amp receptacles will handle a coffee maker, a Crock Pot or a Roaster Oven. The total Watts allowed on each 15 Amp Circuit is 1,800 Watts. The two receptacles in the Pavilion and the 10 lights are on the same 15 Amp Breaker, therefore you will need to determine, from the device you are plugging into the receptacle how many watts it draws (Usually Indicated on the Device). If you exceed the total of 1800 Watts the breaker will trip. You can use the receptacles to charge cell phones, operate a fan but not to operate equipment such as air conditioners. There is a strong possibility that if the total wattage exceeds the recommended 1800 watts, the inverter's breaker will trip. If this should happen, there will be NO electricity generated by the inverter until reset by the Camp Ranger.

## THE PANTRY/STORAGE AREA

The Pantry/Storage Area in addition to housing the Electrical Panel will have shelves for campers to store their supplies instead of leaving them outside or in their vehicle. The following items will also be stored on a wall, in a corner on the floor or a shelf.

1. Fireplace Log Grate
2. 3 - Fireplace Tools and a Stand
3. Bow Saw
4. Chopper One Splitting Axe
5. Roll of Caution Tape
6. Wooden Steaks for an Axe Yard using the Caution Tape
7. Small Square Point Shovel
8. Small Round Point Shovel
9. Pine Oil
10. Bottle of Bleach for Disinfecting
11. Plastic Bucket
12. Toilet Brush for cleaning urinals
13. Soft Plastic Broom for cleaning the latrine and sweeping out water
14. Stiff Bristle Push Broom for sweeping the pavilion
15. Corn Broom for sweeping small items
16. Dustpan & Brush
17. Extra Toilet Tissue
18. Plastic Coffee Cans for the Toilet Tissue
19. 4 - #10 metal cans to support the Fireplace Log Great for use with charcoal
20. An American Flag & PA State Flag to fly at camp
21. 1.7 cubic foot refrigerator



All of the above items are for the use of the campers during their stay at Putt's Camp.

## CHECK-IN AND CHECK-OUT

We have established a new procedure where we will Check-In and Check-Out campers when they arrive and depart from camp. We will need to meet with the Leader of the Group to go over the duties we have requested the campers to perform while they are in camp and to demonstrate and explain the new services we are providing so that your stay will be as enjoyable as possible.

### *Putt's Camp FRL*

*Friends of Raystown Lake*



### Check-In List

---

#### NOTES:

- Make sure the leader has access to the Document: "Putt's Camp Guidebook".
- Remind Campers they can pull into the field to unload their vehicles, as long as the field is not soft, and then park in the Parking Lot.
- Explain how to open the Pantry/Storage Building (P/SB) door and lock it.
- Explain where the instructions are on the Electrical Panel Door. Point out each of the breakers and what they control. Main Breaker, one breaker for the inside receptacle to the left of the door and outside of the building, one double breaker for the receptacles in the pavilion and the lights in the pavilion.
- Explain that before departing camp all of the breakers are to be turned off and the (P/SB) door is to be locked.
- Point out the three switches on the inside wall to the right of the door. They operate the overhead light, outside light and the pavilion lights.
- Point out how the tools are hung and, if used, must be cleaned and returned.
- Point out the list of items on the "Putt's Camp Guidebook", and where they are located. Explain that anything the campers put in the pantry, and do not use, must be taken with them.
- Point out the fireplace and indicate the fireplace grate and tools are in the (P/SB). Also indicate the #10 cans in the (P/SB) can be used with the fireplace grate to use charcoal and cook on the grill. Remind them that prior to leaving camp the fireplace grate needs to be removed and cooled before putting it and the tools back in the (P/SB). Also the ashes in the fireplace need to be spread out so they will burn out. If any water is used make sure it is sprinkled on the coals and not poured.

## NOTES:

- Point out that firewood can be cut and split as indicated in the “Putt’s Camp Guidebook”, placed along the adjacent woods line and covered with a tarp. Do not store firewood inside the pavilion as someone may fall over it. The wood in the fire rack is for your use, provided that you replenish what is used before check-out. **Do not split firewood on the Concrete Floor in the Pavilion.**
- Point out that the tables in the pavilion may be moved or rearranged. If they are, they are to be carried and not slid on the concrete floor. Prior to departing camp the tables must be put back, in the pavilion and arranged 5 to a side as when you arrived in camp, and washed off with a wet cloth. Also the pavilion needs to be swept prior to departing camp.
- Point out the items indicated in the “Putt’s Camp Guidebook” for cleaning the latrine. Clean the latrine daily.
- At the latrine point out the hooks above the windows of the male and female side where a lantern can be hung at night. There is also a Solar light by each door.
- If using an Adirondack Shelters and adjacent pavilion are used the shelter is to be swept out and the table is to be washed off with a wet cloth. If the charcoal grill was used make sure there fire was removed and placed in the fire ring and spread out and then water sprinkled on it.
- Check the fire ring in all campsites being used that they are free from trash and garbage.
- Point out that the American Flag and State Flag are available in the (P/SB) to be flown on the camp flag poles. Make sure the flags are dry and return them to the (P/SB) prior to leaving camp.
- If using the Buddy Board or Bulletin Board, make sure all of your items are removed prior to leaving camp.

# Putt's Camp FRL

Friends of Raystown Lake



## Check-Out List

### NOTES:

- Check Adirondack Shelters if used to make sure they were swept out.
- The pavilion table was washed off with a wet cloth.
- The coals were removed from the charcoal grill and placed in the fire ring.
- The coals were extinguished.
- Check latrine to make sure it was cleaned and the water was swept out.
- The commode lids are closed.
- The Toilet Tissue containers were returned to the (P/SB).
- Make sure the flag(s) are not on the poles.
- Make sure the bulletin board is cleaned off.
- Check the pavilion to make sure the floor was swept.
- Check that fireplace grate and tools were returned to the (P/SB).
- Check that the fireplace coals have been spread out and water sprinkled on them.
- Check that all cut up and split wood is stored along the woods line adjacent to the pavilion and the wood rack in the pavilion is full.
- Check for marks on the floor indicating wood was split in the pavilion.
- Make sure the tables are arranged 5 to a side.
- Make sure the tables were not slid across the floor.
- Make sure the tables were washed off with a wet cloth.
- Check the (P/SB) to make sure all the camp items have been returned to the shelves as marked.
- Make sure the campers have not left anything in the (P/SB).

**NOTES:**

- Check to see that all tools are hanging in their respective places and are clean.
- Make sure all breakers in the electrical panel are turned off.
- Make sure the refrigerator is empty, clean, and door is left open.
- Make sure the (P/SB) is closed and locked.
- Have the entire camp policed with a walk through including all the campsites, shelters and fire rings for hot coals, trash or garbage.

**The following items are to be completed by the Staff Member Only:**

- Before leaving camp, make sure that the inverter is turned off.
- Please wait and leave camp after all the campers have departed.



# **APPENDIX**

# PUTT'S CAMP USGS MAP



U.S. DEPARTMENT OF THE INTERIOR  
U.S. GEOLOGICAL SURVEY



ENTRIKEN QUADRANGLE  
PENNSYLVANIA  
7.5-MINUTE SERIES



Produced by the United States Geological Survey  
North American Datum of 1983 (NAD83)  
World Geodetic System of 1984 (WGS84). Projection and  
1:250,000 scale. National Topographic Database, Zone 17E  
18 2000 East UTM. Pennsylvania Coordinate System of 1983  
North Zone.

This map is not a legal document. Boundaries may be  
generalized for this map scale. Please check with your government  
jurisdiction for legal boundaries. Obtain permission before  
reproducing printed maps.

Imagery: NAIP, August, 2013  
Data: U.S. Census Bureau, 2010  
Hydrography: National Hydrography Dataset, 2013  
Contours: National Contour Dataset, 2010  
Boundaries: Multiple sources, see metadata file 1972-2014  
Metadata: PAC Metadata Metadata Inventory, 1977-2014



ROAD CLASSIFICATION

Expressway	Local Connector
Secondary Hwy	Local Road
Ramp	AWP
American Route	US Route
	State Route

1	3	7
2	4	8
5	6	9

2025 RELEASE UNDER E.O. 14176

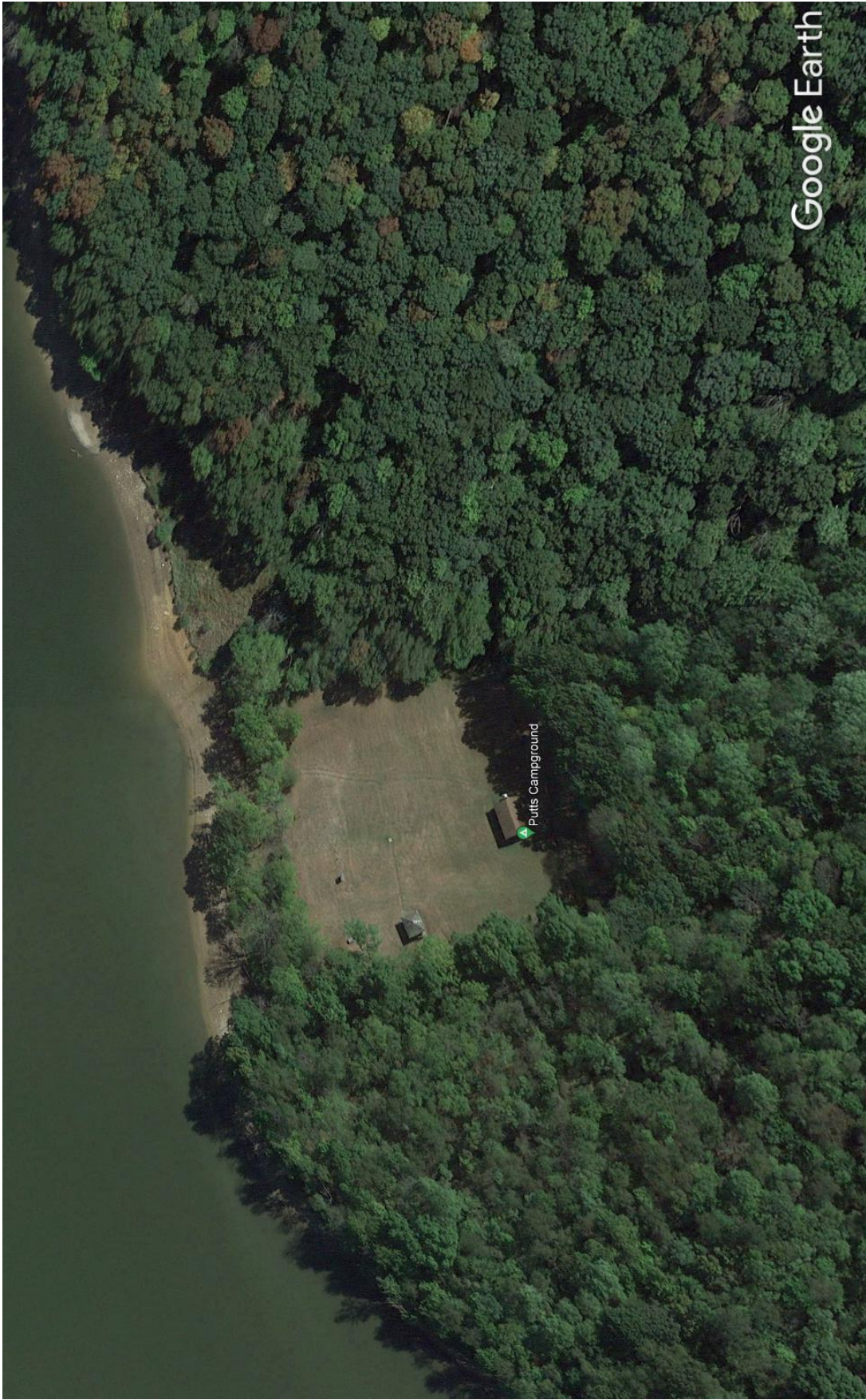
ENTRIKEN, PA  
2016



PUTT'S CAMP



**Areal View of Putt's Camp**



# ***Putt's Camp FRL***

*Friends of Raystown Lake*



## **EMERGENCY CONTACT INFORMATION**

**Bedford County 911 Center .....814-623-1105**

### **EMERGENCY DEPARTMENTS of HOSPITALS & TRAUMA CENTER**

#### **Penn Highlands Hospital**

1225 Warm Springs Avenue, Huntingdon, PA 16652 ..... 814-643-2290

#### **Conemaugh Nason Medical Center**

105 Nason Drive, Roaring Spring, PA 16675..... 814-224-2141

#### **UPMC Trauma Center**

620 Howard Avenue, Altoona 16601 ..... 814-889-2011

**LANDING ZONE COORDINATES (Putt's Camp).....N40° 15.667'      W 078° 12.502'**

### **OTHER NUMBERS**

#### **Camp Ranger**

Wayne B. Hammond ..... Home: 814-635-3235  
..... Cell: 814-935-0355

#### **Saxton Market**

509 Main Street, Saxton, PA 16678 ..... 814-635-3413

#### **Ruby's Pharmacy, Inc.**

509 Main St Suite #102, Saxton, PA 16678 ..... 814-635-7488

#### **McCahan's Pharmacy**

813 Lower Main Street, Saxton, PA 16678 ..... 814-635-2911

## CAMPING PERMIT

The **CAMPING PERMIT** was implemented because there are persons that have been camping or using Putt's Camp and they do not meet the criteria as being a Non-Profit Organization and just show up at Putt's Camp. We have determined that we needed an instrument to convey that your organization was approved to be in attendance at Putt's Camp and if you were questioned by a Putt's Camp Official, the PA Fish Commission, the Coast Guard Auxiliary or the COE Rangers you would need to show them your **Camping Permit**. Also, there have been occasions when an approved Organization arrives in camp or is in camp and someone arrives to camp, have a picnic or already is in camp. If your organization has any question in your mind, whether they are supposed to be there, asked them if they have a **Camping Permit** and if they do not have a **Camping Permit**, you are to call the Putt's Camp Ranger immediately at one of the phone numbers listed below. We do not want **STRANGERS** to be on Putt's Camp property while you are camped there.

Each origination coming to Putt's Camp, after all of their documents and funds have been received (**At least two weeks prior to arriving at Putt's Camp**, unless other arrangements have been made with the Putt's Camp Ranger) will be sent a **Camping Permit**. Each adult in attendance at camp, entering a locked gate or travelling on Terrace Mountain Trail must carry a copy of this **Camping Permit**, in a hard copy format or a PDF Copy of the Permit displayed on your Smart Phone, with your name on it, and make it available for inspection by an Officer upon request.

Example: If you are entering a locked gate or driving on Terrace Mountain Trail to Putt's Camp and are stopped by a Park Ranger and do not have a copy of the Permit with you, you will be asked to leave the premises. If you are in camp and are asked to see your Camping Permit, and you do not have it, you will be asked to leave camp.

It is the Organizations responsibility to make copies of the permit and give a copy to each adult in attendance or adults transporting youth to camp. If someone does not have a copy of the permit, and they are stopped, they will be asked to leave the premises.

### *Sample Permit:*



## PUTT'S CAMP - CAMPING PERMIT

The holder of this **Camping Permit** has made the proper arrangements with the Friends of Raystown Lake, and the U.S. Army Corps of Engineers to camp at **Putt's Camp** and must make this **Camping Permit** available for inspection upon request.

NON-PROFIT ORIGATION: \_\_\_\_\_.

Leader in Charge: \_\_\_\_\_/Other Leaders & Drivers: \_\_\_\_\_.

CAMPING DATES:

ARRIVAL: \_\_\_\_/\_\_\_\_/\_\_\_\_ DEPARTURE: \_\_\_\_/\_\_\_\_/\_\_\_\_.

Each Leader & Driver in attendance at **Putt's Camp** or entering a locked COE gate, must carry a hard copy of this **Camping Permit** or a PDF Copy of the Permit displayed on your Smart Phone, with your name on it and make it available for inspection of an Officer upon request.

Permit Issued On: \_\_\_\_/\_\_\_\_/\_\_\_\_.

Permit Issued By: *Wayne B. Hammond*, Wayne B. Hammond, P.E. EMT, Putt's Camp Ranger

## **PUTT'S CAMP RESERVATION FEES AND PAYMENT SCHEDULE**

Whenever you fill out the Agreement of Use Form to reserve your stay at Putt's Camp you will not be paying a \$100.00 deposit fee as required in the past. You will determine your total fee for your stay at camp including the number of persons registering at \$6.00/night, the Pavilion at \$25.00/day and the Adirondack Shelters at \$15.00/day. Once you compute your total fee, 50% of the fee will be required to reserve the facilities you wish to use. The balance of the camping fee will be required to be submitted along with your Insurance Certificate to arrive 14 days before the date you plan on arriving at camp. If your fee is not paid 14 days prior to your arrival at camp there will be a \$25.00 late fee assessed.

Once you have made a reservation and decide you want to cancel your reservation, it must be cancelled at least 14 days before your arrival date at camp, to give use time to rent the camp to someone else and you will be refunded the fees you have paid. If you cancel within the 14 days before your arrival you will be assessed 50% of your total camp fee.

### Exclusive Use of Putt's Camp By Your Group

If you so desire, when you rent Putt's Camp and do not want anyone else in camp, while you are there, you can pay the Exclusive Use Fee and then you have exclusive use of the camp while you are camping there.

We have established an Exclusive Use Fee for Putt's Camp based on 50 persons per night for a weekend stay or a week long stay.

A weekend stay will be three (3) days, usually arriving on Friday and leaving on Sunday and the fee will be \$880.00. This includes up to 50 persons camping for two (2) nights and the use of the Pavilion and Adirondack Shelters for three (3) days. If you have more than 50 persons camping, the number of persons over 50 will be charged \$12.00 each, which will be added to the \$880.00. If you have less than 50 persons camping the fee will be \$880.00, for the weekend.

A week long stay will be seven (7) days usually arriving on Saturday and leaving on Saturday and the fee will be \$2,700.00. This includes up to 50 persons camping for six (6) nights and the use of the Pavilion and Adirondack Shelters for seven (7) days. If you have more than 50 persons camping, the number of persons over 50 will be charged \$36.00 each, which will be added to the \$2,700.00. If you have less than 50 persons camping the fee will be \$2,700.00, for the week.



Thank you for visiting our camp  
Please Come Back Again Soon!

*- Putt's Camp Ranger Staff*

*&*

*- Friends of Raystown Lake*