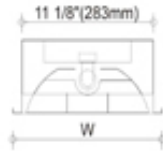
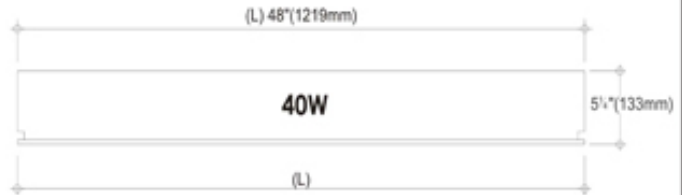
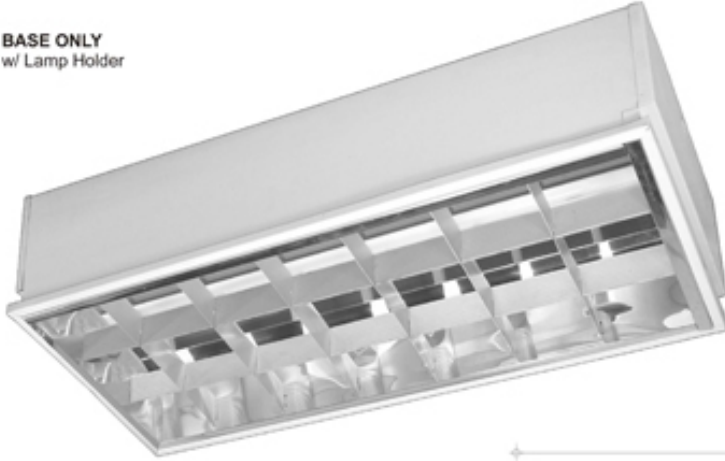


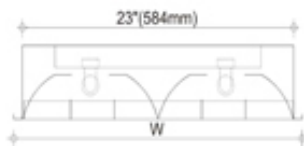
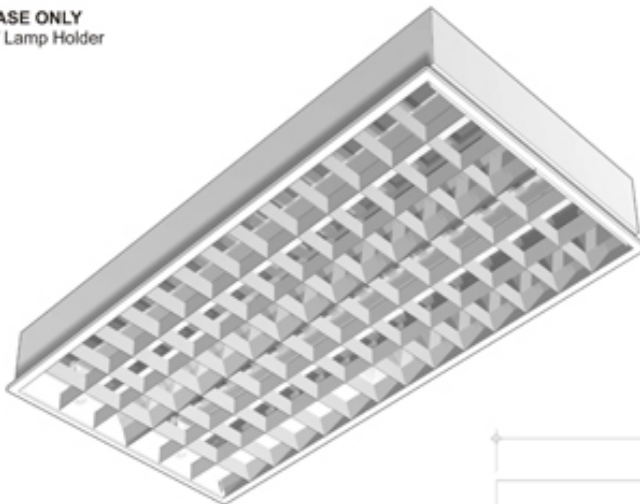
AMCO LOUVER TYPE FLUORESCENT BASE WITH MIRRORIZED ALUMINUM REFLECTOR

BASE ONLY
w/ Lamp Holder



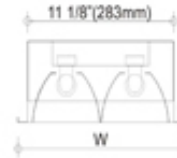
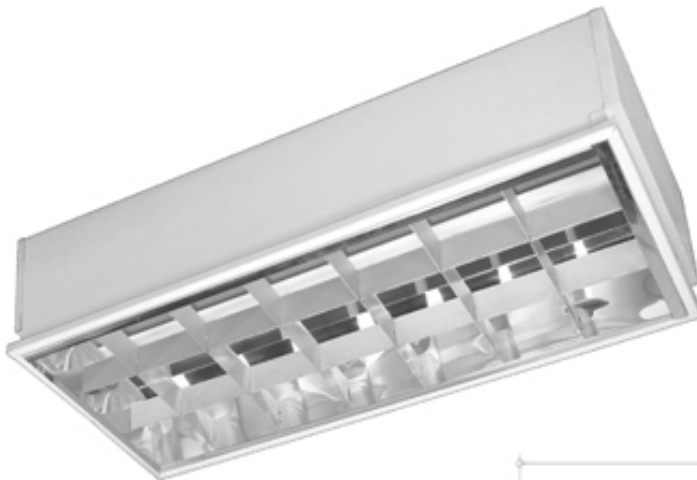
MODEL NO.	WATTAGE	W	L
AP120-DCT	1-20w	12⁵/₈" (321mm)	24¹/₂" (622mm)
AP140-DCT	1-40w	12⁵/₈" (321mm)	48¹/₂" (1232mm)

BASE ONLY
w/ Lamp Holder



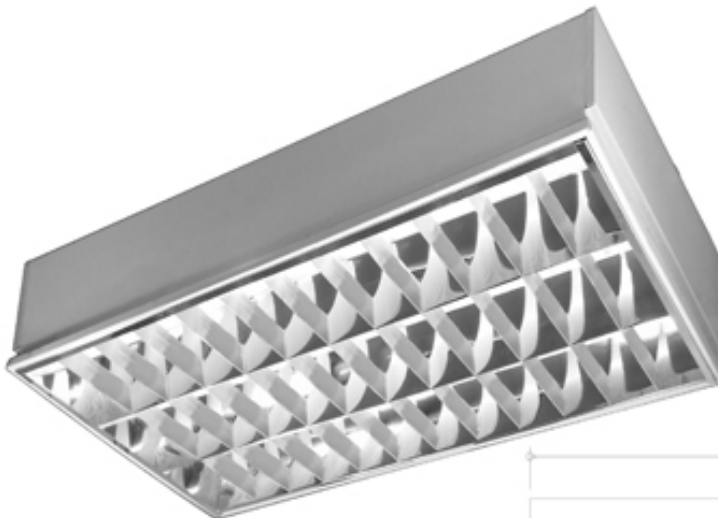
MODEL NO.	WATTAGE	W	L
AP220-BDT	2-20w	24¹/₂" (622mm)	24¹/₂" (622mm)
AP240-BDT	2-40w	24¹/₂" (622mm)	48¹/₂" (1232mm)

AMCO LOUVER TYPE FLUORESCENT BASE WITH MIRRORIZED ALUMINUM REFLECTOR



MODEL NO.	WATTAGE	W	L
AP220-DT	2-20w	12⁵/₈" (321mm)	24¹/₂" (622mm)
AP240-DT	2-40w	12⁵/₈" (321mm)	48¹/₂" (1232mm)

(BASE ONLY with LAMP HOLDER)



MODEL NO.	WATTAGE	W	L
AP320-DT	3-20w	24¹/₂" (622mm)	24¹/₂" (622mm)
AP340-DT	3-40w	24¹/₂" (622mm)	48¹/₂" (1232mm)

(BASE ONLY with LAMP HOLDER)

AMCO CIRCULAR LAMP BASE WITH HOLDER & SOCKET



Lamp Holder for Circular Lamp Base



1 - 22 Watts

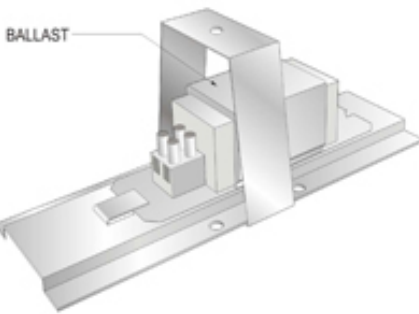
MODEL NO. **AP1027-B**



1 - 22 Watts w/ Crystal

MODEL NO. **AP1027-B**

RADO RING LIGHT BASE W/ HOLDER & SOCKET

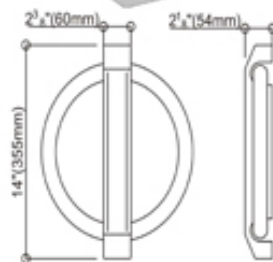


RADO 22 W RADO 32 W

AMCO STRIP CIRCULAR LAMP BASE



32 Watts



MODEL NO.
AP1028-T



1 - 32 Watts

MODEL NO. **AP1028-B**



1 - 32 Watts w/ Crystal

MODEL NO. **AP1028-C**



32 / 22 Watts

MODEL NO. **AP1029-B**



32 / 22 Watts w/ Crystal

MODEL NO. **AP1029-BC**



40 Watts

MODEL NO. **AP1030-B**



40 Watts w/ Crystal

MODEL NO. **AP1030-BC**



40 / 32 Watts

MODEL NO. **AP1031-B**



40 / 32 Watts w/ Crystal

MODEL NO. **AP1031-BC**

AMCO CANOPY BASE AND STEM

MODEL NO.	STEM LENGTH
AP-1113-1	1ft.(304.8mm)
AP-1113-1.5	1.5ft.(457.2mm)
AP-1113-2	2ft.(609.6mm)
AP-1113-2.5	2.5ft.(762mm)
AP-1113-3	3ft.(914.4mm)
AP-1113-4	4ft.(1219.2mm)
AP-1113-5	5ft.(1524mm)
AP-1113-6	6ft.(1828.8mm)
AP-1113-G	without STEM

MODEL NO.
AP-1113 WITH 2 STEM
AP-1113-G WITHOUT STEM

AMCO CANOPY with Ap1252 Fluo. base

AMCO CANOPY with AP1255-A Fluo. base

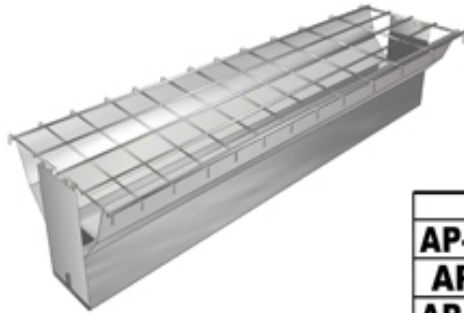
AMCO CANOPY with AP1244-A Fluo. base

AMCO CANOPY with AP1055-S Fluo. base

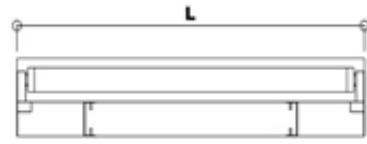
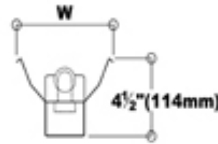
AMCO CANOPY with AP1092 Fluo. base

NOTE:
AMCO CANOPY BASE AND STEM is adaptable to all kinds of AMCO FLUORESCENT BASE products.
Canopy Stem varies in length. (Please specify when ordering)

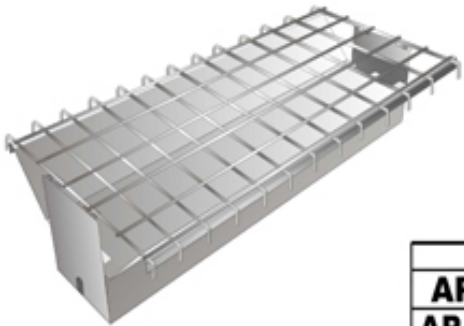
AMCO INDUSTRIAL TYPE FLUORESCENT BASE



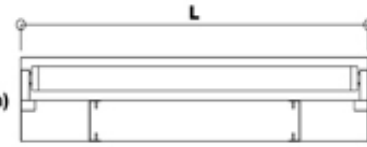
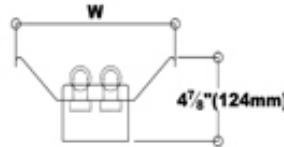
(BASE ONLY w/ WELDED WIRE GUARD)



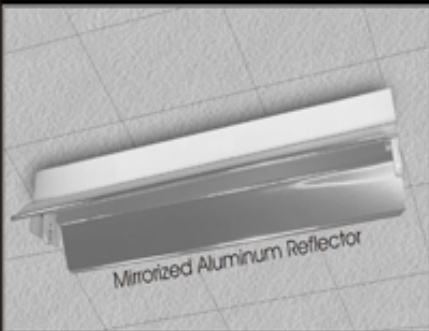
MODEL NO.	WATTAGE	W	L
AP-1050-WBG	1-15w	7"(177.8mm)	18"(457.2mm)
AP-1050-WG	1-20w	7"(177.8mm)	24"(609.6mm)
AP-1051-WBG	1-30w	7"(177.8mm)	36"(914.4mm)
AP-1051-WG	1-40w	7"(177.8mm)	48"(1219.2mm)



(BASE ONLY w/ WELDED WIRE GUARD)



MODEL NO.	WATTAGE	W	L
AP-1052-WG	2-20w	11"(279.4mm)	24"(609.6mm)
AP-1055-WBG	2-30w	11"(279.4mm)	36"(914.4mm)
AP-1055-WG	2-40w	11"(279.4mm)	48"(1219.2mm)

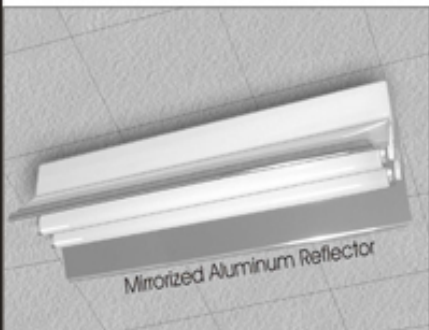
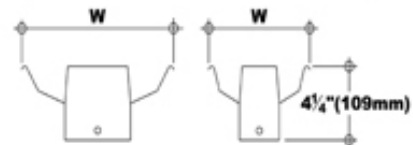
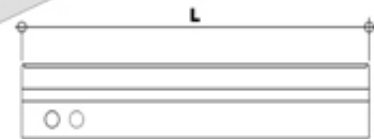


(BASE ONLY w/ SPRING LOADED LAMP HOLDER)

MIRRORIZED ALUMINUM REFLECTOR



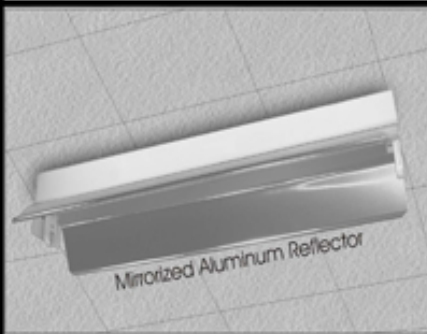
SPRING LOADED LAMP HOLDER



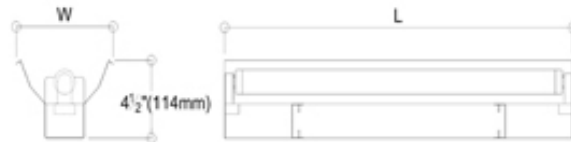
(BASE ONLY w/ SPRING LOADED LAMP HOLDER)

MODEL NO.	WATTAGE	W	L
AP-1050-S-A	1-20w	7"(177.8mm)	24 1/4"(616mm)
AP-1051-S-A	1-40w	7"(177.8mm)	48 1/4"(1226mm)
AP-1052-S-A	2-20w	10 1/2"(266mm)	24 1/4"(616mm)
AP-1055-S-A	2-40w	10 1/2"(266mm)	48 1/4"(1226mm)

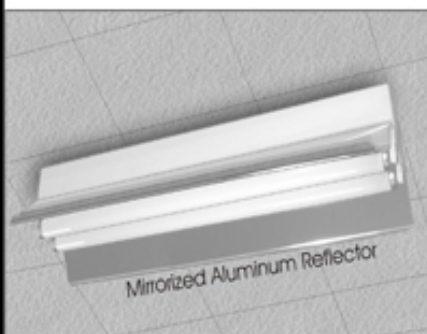
AMCO INDUSTRIAL TYPE FLUORESCENT BASE WITH MIRRORIZED ALUMINUM REFLECTOR



(BASE ONLY)



MODEL NO.	WATTAGE	W	L
AP-1050-BA	1-15w	7"(177.8mm)	18"(457.2mm)
AP-1050-A	1-20w	7"(177.8mm)	24"(609.6mm)
AP-1051-BA	1-30w	7"(177.8mm)	36"(914.4mm)
AP-1051-A	1-40w	7"(177.8mm)	48"(1219.2mm)

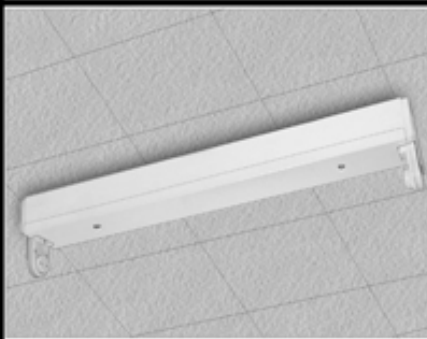


(BASE ONLY)



MODEL NO.	WATTAGE	W	L
AP-1052-A	2-20w	11"(279.4mm)	24"(609.6mm)
AP-1055-CA	2-30w	11"(279.4mm)	36"(914.4mm)
AP-1055-A	2-40w	11"(279.4mm)	48"(1219.2mm)

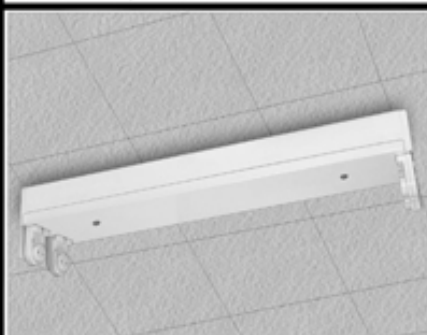
AMCO BOX TYPE FLUORESCENT BASE



BASE ONLY W/ SPRING LOADED LAMP HOLDER



MODEL NO.	WATTAGE	W	L
AP 1058-S	1-15w	2 3/4" (69.85mm)	19"(483mm)
AP 1058-S	1-20w	2 3/4" (69.85mm)	25"(635mm)
AP 1062-S	1-30w	2 3/4" (69.85mm)	37"(940mm)
AP 1062-S	1-40w	2 3/4" (69.85mm)	49"(1245mm)



BASE ONLY W/ SPRING LOADED LAMP HOLDER

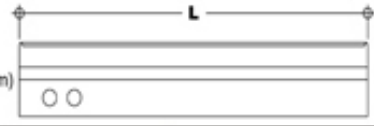
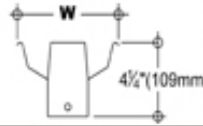


MODEL NO.	WATTAGE	W	L
AP 1059-S	2-15w	3 1/2" (88.9mm)	19"(483mm)
AP 1059-S	2-20w	3 1/2" (88.9mm)	25"(635mm)
AP 1063-S	2-30w	3 1/2" (88.9mm)	37"(940mm)
AP 1063-S	2-40w	3 1/2" (88.9mm)	49"(1245mm)

AMCO INDUSTRIAL TYPE FLUORESCENT BASE w/ WHITE POWDER COATED REFLECTOR



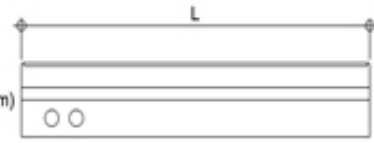
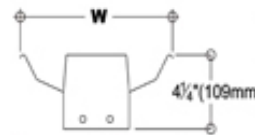
(BASE ONLY)



MODEL NO.	WATTAGE	W	L
AP-1050-B	1-15w	7"(177.8mm)	18"(457.2mm)
AP-1050	1-20w	7"(177.8mm)	24"(609.6mm)
AP-1051-B	1-30w	7"(177.8mm)	36"(914.4mm)
AP-1051	1-40w	7"(177.8mm)	48"(1219.2mm)



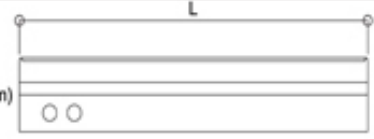
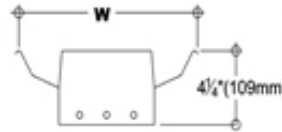
(BASE ONLY)



MODEL NO.	WATTAGE	W	L
AP-1052	2-20w	11"(279.4mm)	24"(609.6mm)
AP-1055-C	2-30w	11"(279.4mm)	36"(914.4mm)
AP-1055	2-40w	11"(279.4mm)	48"(1219.2mm)



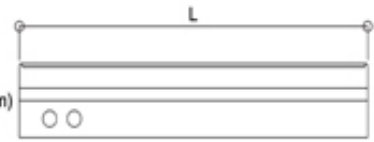
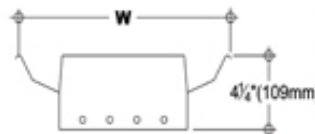
(BASE ONLY)



MODEL NO.	WATTAGE	W	L
AP-1053	3-20w	12 1/2"(317.5mm)	24"(609.6mm)
AP-1056	3-40w	12 1/2"(317.5mm)	48"(1219.2mm)



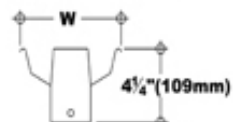
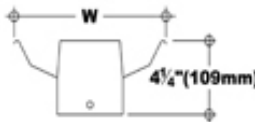
(BASE ONLY)



MODEL NO.	WATTAGE	W	L
AP-1054	4-20w	14 3/4"(374.6mm)	24"(609.6mm)
AP-1057	4-40w	14 3/4"(374.6mm)	48"(1219.2mm)

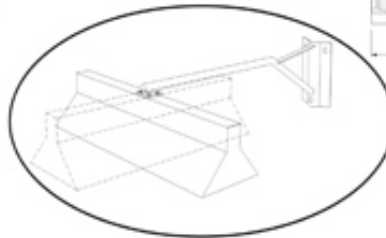
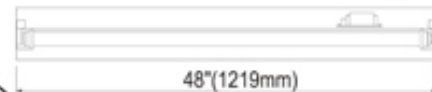
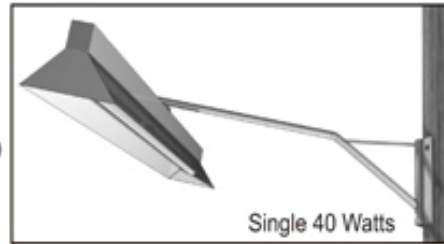
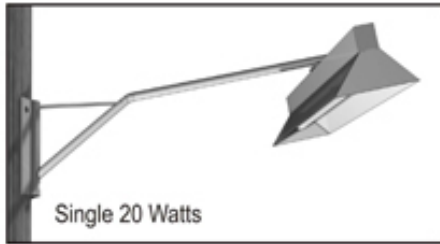


(BASE ONLY w/ SPRING LOADED LAMP HOLDER)



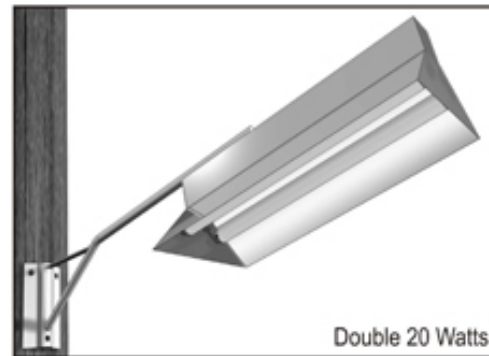
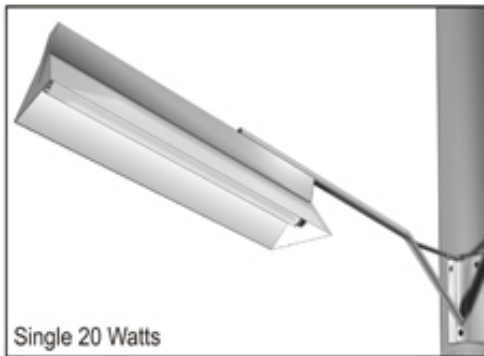
MODEL NO.	WATTAGE	W	L
AP-1050-S	1-20w	7"(177.8mm)	24 1/4"(616mm)
AP-1051-S	1-40w	7"(177.8mm)	48 1/4"(1226mm)
AP-1052-S	2-20w	10 1/2"(266mm)	24 1/4"(616mm)
AP-1055-S	2-40w	10 1/2"(266mm)	48 1/4"(1226mm)

AMCO LOW-COST OUTDOOR BARANGAY FLUORESCENT LAMP



MODEL NO.
1142 W/ BRACKET
1142B W/O BRACKET

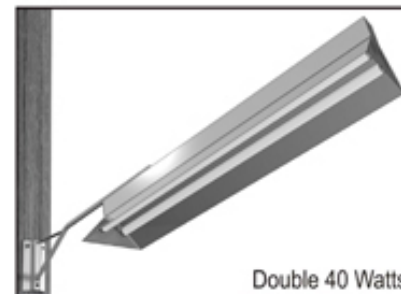
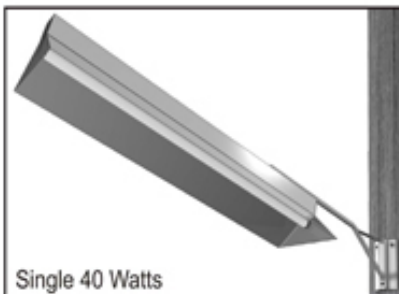
MODEL NO.
1144 W/ BRACKET
1144B W/O BRACKET



MODEL NO.
1150-I



MODEL NO.
1152-I



MODEL NO.
1151 W/ BRACKET
1151B W/O BRACKET

MODEL NO.
1155 W/ BRACKET
1155B W/O BRACKET

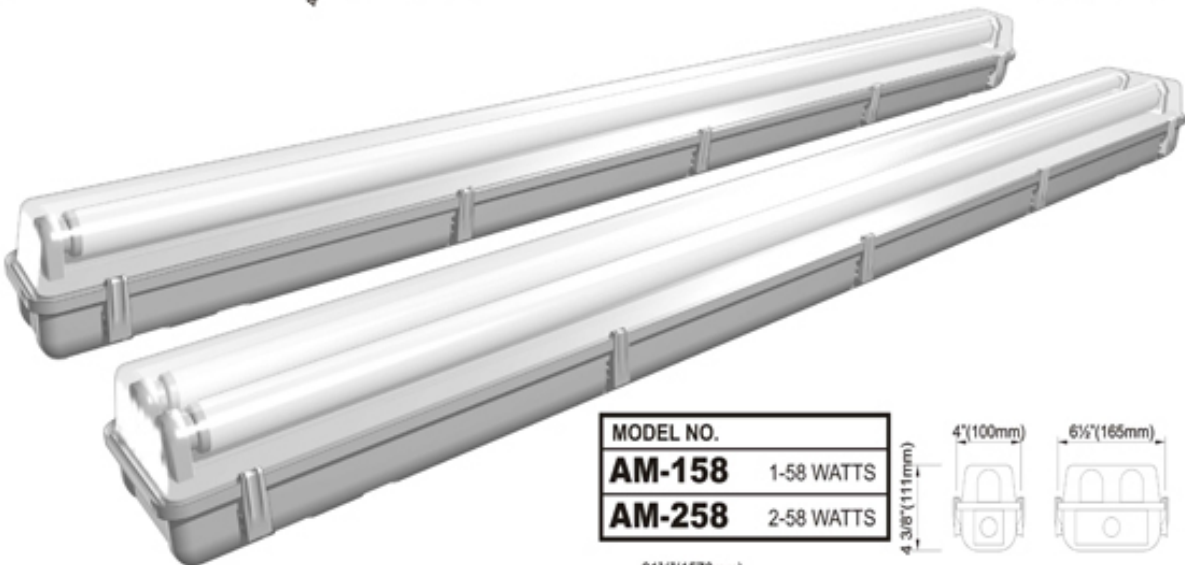
**AMCO DUST TIGHT & WEATHERPROOF FLUORESCENT BASE
FOR INDOOR & OUTDOOR (ANTI-CORROSIVE FIXTURE)**



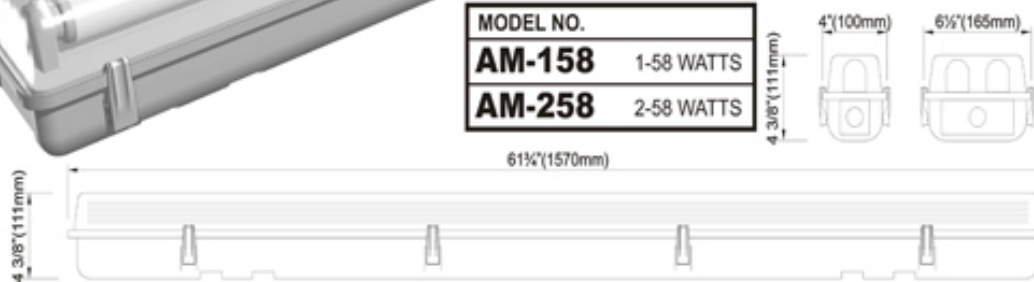
MODEL NO.	
AM-120	1-20 WATTS
AM-220	2-20 WATTS



MODEL NO.	
AM-140	1-40 WATTS
AM-240	2-40 WATTS



MODEL NO.	
AM-158	1-58 WATTS
AM-258	2-58 WATTS



AMCO INDOOR & OUTDOOR FLUORESCENT BASE

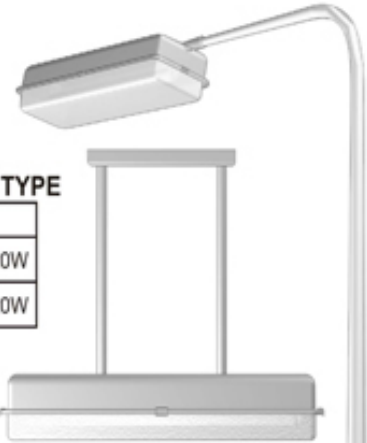


OUTDOOR TYPE

MODEL NO.	
AP-1146W	1-20W
AP-1148W	2-20W

INDOOR CANOPY TYPE

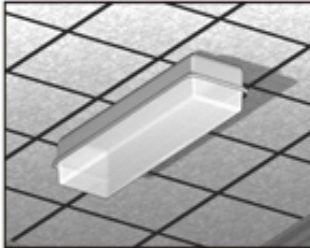
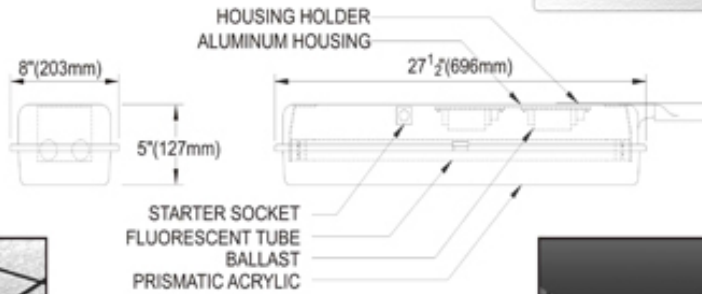
MODEL NO.	
AP-1250	1-20W
AP-1252	2-20W



Bracket for Wall and
Wooden Post



MODEL NO.
B-5WP

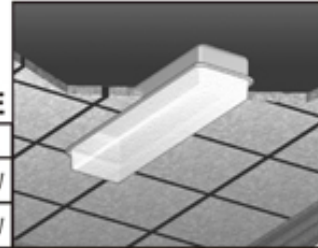


SURFACE TYPE

MODEL NO.	
AP-1146-R	1-20W
AP-1148-R	2-20W

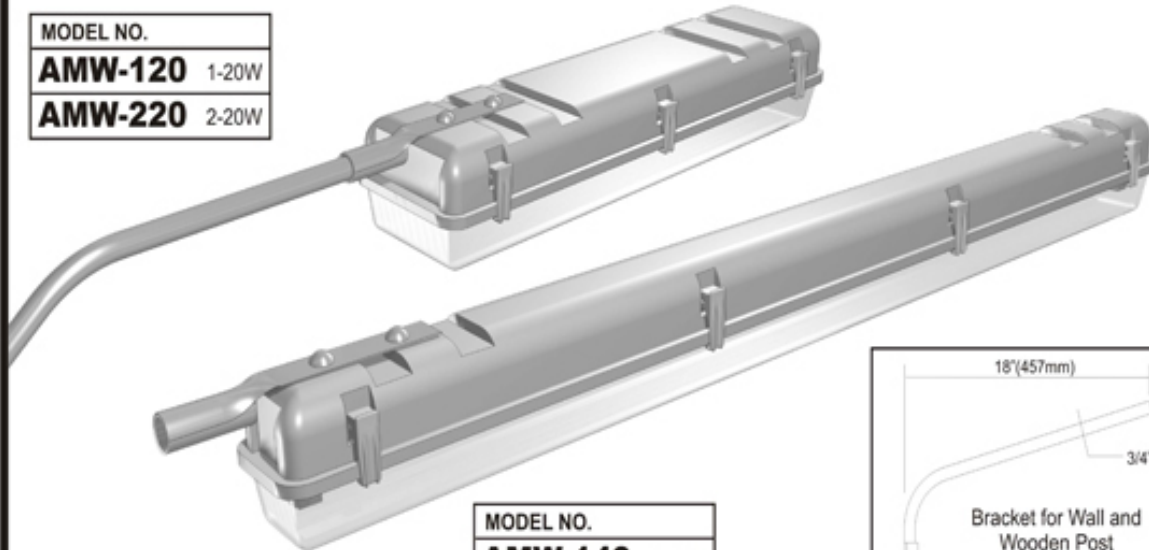
RECESS TYPE

MODEL NO.	
AP-1210-R	1-20W
AP-1211-R	2-20W

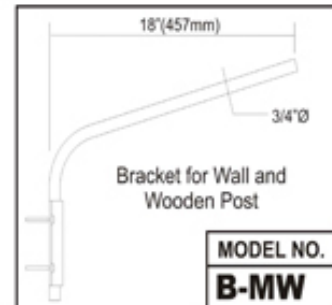


AMCO DUST TIGHT & WEATHERPROOF FLUORESCENT BASE OUTDOOR TYPE (ANTI-CORROSIVE FIXTURE)

MODEL NO.	
AMW-120	1-20W
AMW-220	2-20W

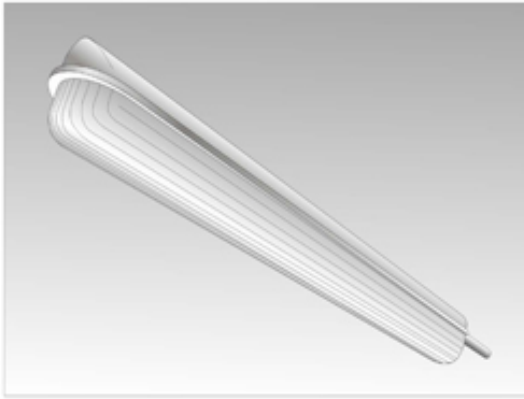


MODEL NO.	
AMW-140	1-40W
AMW-240	2-40W

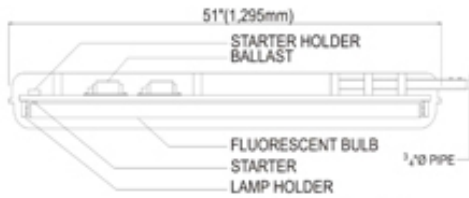


MODEL NO.
B-MW

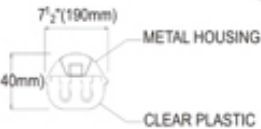
AMCO OUTDOOR FLUORESCENT OR MERCURY LAMP



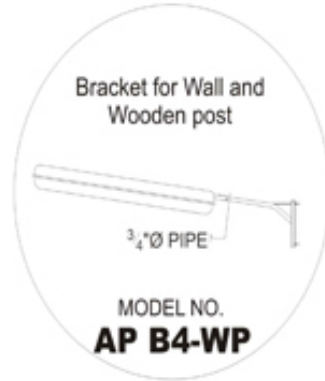
MODEL NO.
AP1147-W 1 - 40watts Fluorescent
AP1149-W 2 - 40watts Fluorescent



DETAIL SECTION

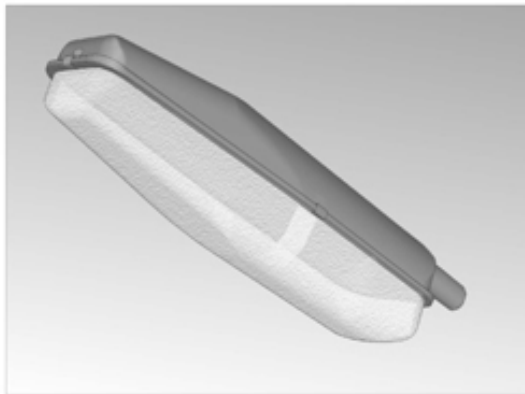


Bend type Steel Tapered Post
with Base Plate

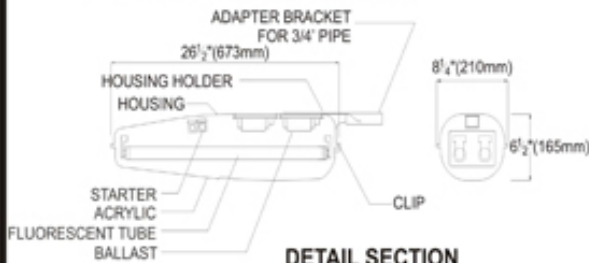


MODEL NO.
AP B4-WP

MODEL NO.
AP1149-WP



MODEL NO.
AP 1150 1 - 20watts Fluorescent
AP 1152 2 - 20watts Fluorescent



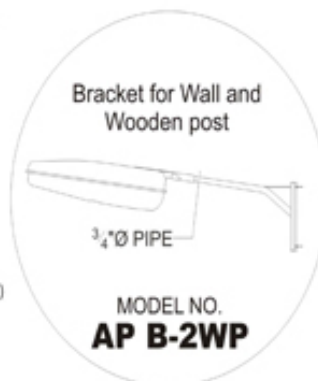
DETAIL SECTION

Mercury Lamp



MODEL NO.
AP B1-WP

MODEL NO.
AP-1150-B 1 - 80W max. Bulb
AP-1152-B 2 - 80W max. Bulb



MODEL NO.
AP B-2WP

MODEL NO.
AP B-2BT

Bend type Steel Tapered Post
with Base Plate

