

# Coretech



## Smart *Line Break Protection* Systems

Smart

100%

*Maintenance*

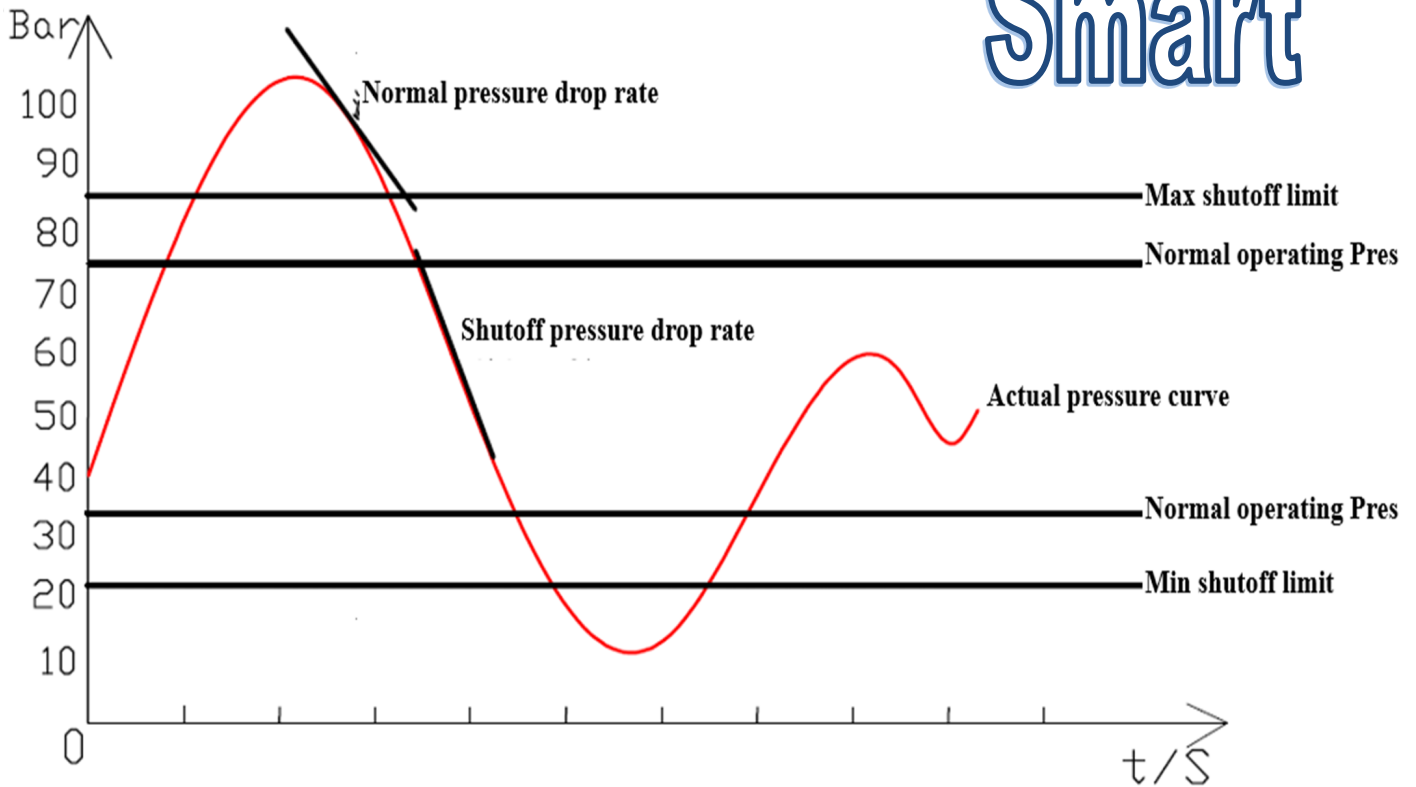
*Free*

- ⇒ **AUTOMATIC LINE BREAK PROTECTION FOR HIGH PRESSURE**
- ⇒ **AUTOMATIC LINE BREAK PROTECTION FOR LOW PRESSURE**
- ⇒ **AUTOMATIC PRESSURE DROP RATE (PDR) PROTECTION**
- ⇒ **COMPACT ACTUATOR**
- ⇒ **STORAGE TANK—3 STROKES**
- ⇒ **EXPLOSION PROOF ENCLOSURE**
- ⇒ **HYDRAULIC MANUAL OVERRIDE**
- ⇒ **PARTIAL STROKE TEST (PST)**
- ⇒ **SOLAR POWER OPTION FOR REMOTE LOCATIONS**

**1 Actuator = Remote  
Control + *Line Break  
Protection***

# Gas Pipeline Pressure Monitoring

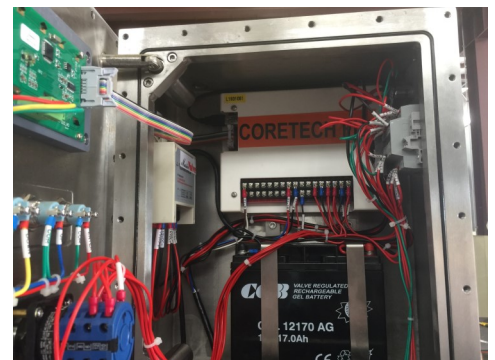
# Smart



## Gas Pipeline Line Break Protection Pressure Range

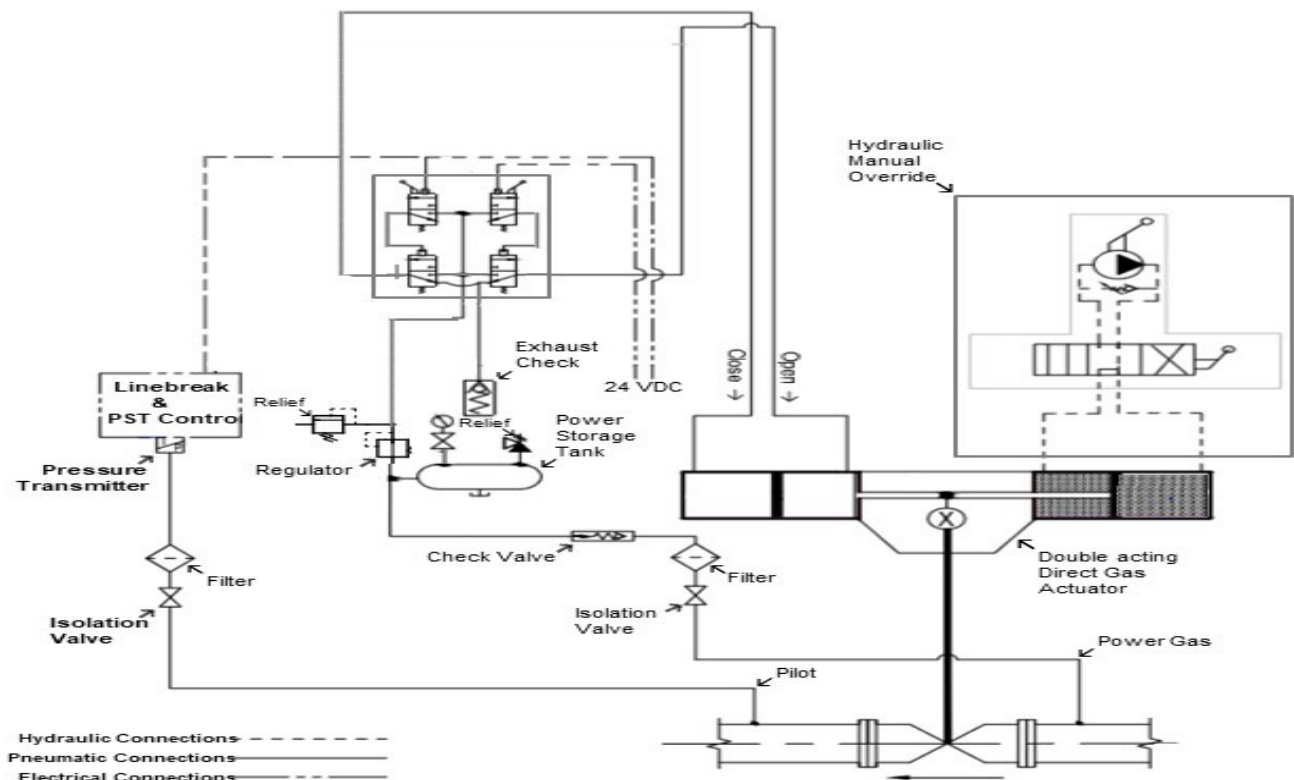
### LINE BREAK PROTECTOIN (LBP)

- **Remote control + Line Break Protection:** 1 actuator achieve 2 functions
- **High pressure shutoff:** Pipeline pressure reaches the preset maximum pressure
- **Low pressure shutoff:** Pipeline pressure drops below the preset minimum pressure
- **Pressure drop rate:** Pipeline pressure drop rate (PDR) is bigger than the preset drop rate (30 psi/minute etc)
- **100% digital pressure transducer** much better than hi/lo mechanical sensors and self contained hydraulic actuator
- **Saved costs-** Maintenance free



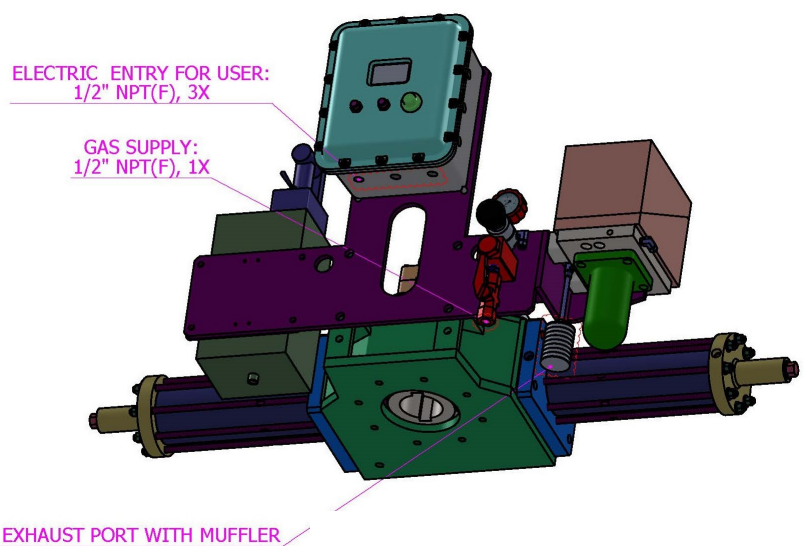
# Digital

# Gas Pipeline Safety Actuator + LBP



## Direct Gas Actuator

- More benefits- remote control actuator with Line Break Protection
- Direct gas actuator using high pressure natural gas in the pipeline up to 3,000 psi
- Compact actuator with small foot print
- Gas storage tank for emergency shutdown
- Fast stroke time for quick action in emergency situation
- Hydraulic manual pump for local operation



Coretech

# Field Installation & Commission



**Coretech Flow America**

**23555 Clay Road  
Katy, Texas 77493  
United States of America  
[www.Coretechflow.com](http://www.Coretechflow.com)**

