



Field Jacket, Olmetex Waxed Cotton

£399

Field Jacket, waxed cotton by Olmetex.

Art. MDJK0005

Detail

Classic waxed cotton field jacket.

*Premium Italian fabric with a protective wax coating

*Abrasion-resistant

*Water-repellent

*Stand collar

*Bellowed breast flap pockets and side flap pockets for functionality

*Internal tunnel drawstring for adjustable fit

*Concealed snap-button closure with two-way zipper

Made in Portugal

Size & Shape

For details, please refer to the measurements chart.

Care

Follow the care instructions on the product label.

Material: 45% Cotton 39% Polyester 16% Nylon



Colour



OM0012 lovat



OM0013 navy blue



OM0006 stone



OM0011 dark olive



OM0007 night blue



OM0008 black

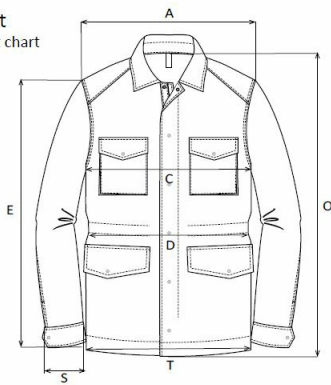
Size

48, 50, 52, 54



DUNCAN BESPOKE
TAILORING

Field jacket Measurement chart



| | Size | Tolerance | 46 | 48 | 50 | 52 | 54 | 56 | 58 | 60 | 62 |
|---|--------------------------|-----------|------|------|------|------|------|------|------|------|------|
| A | Point to point | +/- 1 | 46 | 47,5 | 49 | 50,5 | 52 | 53,5 | 54,5 | 55,5 | 56,5 |
| C | 1/2 finished chest | +/- 2 | 57,5 | 59,5 | 61,5 | 63,5 | 65,5 | 67,5 | 69,5 | 71,5 | 73,5 |
| D | 1/2 finished waist | +/- 2 | 56 | 58 | 60 | 62 | 64 | 67 | 70 | 73 | 76 |
| T | 1/2 finished bottom | +/- 2 | 56 | 58 | 60 | 62 | 64 | 67 | 69 | 72 | 75 |
| F | Shoulder width | +/- 1 | 14,5 | 15 | 15,5 | 16 | 16,5 | 17 | 17,3 | 17,6 | 17,9 |
| O | Field jacket length | +/- 1 | 75 | 76,5 | 78 | 79,5 | 81 | 82,5 | 83,5 | 84,5 | 85,5 |
| E | Sleeve length incl. cuff | +/- 1 | 65,5 | 67 | 68,5 | 70 | 71,5 | 73 | 74 | 75 | 76 |
| S | 1/2 cuff | +/- 0,5 | 14 | 14 | 14,5 | 14,5 | 15 | 15 | 15,5 | 15,5 | 16 |

Stylers
MADE TO MEASURE





Quilted Jacket

Smart casual quilted jacket.

£449

Art. MDJK0007

Detail

Crafted from premium quilted sandwich fabric by renowned Italian supplier Delfi, this jacket combines technical performance with refined style.

* Fabric: two layers of high-quality 100% PL microfibre with 100g padding (total weight 230g)

* Diamond stitch quilting 5 x 5 cm, double sided

* Collar with Alcantara contrast

* Weltd breast pocket, side flap pockets, and ticket pocket

* Genuine horn buttons

Made in Portugal

Size & Shape

For details, please refer to the measurements chart.

Care

Follow the care instructions on the product label.

Material: 100% Polyester



Colour



DE0005 navy blue



DE0004 beige

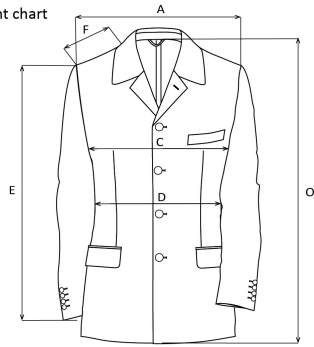
Size

46, 48, 50, 52, 54



DUNCAN BESPOKE
TAILORING

Quilted Jacket Measurement chart



| | Size | Tolerance | 46 | | 48 | | 50 | | 52 | | 54 | | |
|---|--------------------|-----------|------|------|-------|------|-------|------|-------|------|-------|------|-------|
| | | | cm | in | cm | in | cm | in | cm | in | cm | in | |
| A | Point to point | +/- 1 | 0.4" | 46 | 18.1" | 47 | 18.5" | 48 | 18.9" | 48.5 | 19.1" | 49.5 | 19.5" |
| C | 1/2 finished chest | +/- 2 | 0.8" | 55 | 21.7" | 57 | 22.4" | 59 | 23.2" | 61 | 24" | 63.5 | 25" |
| D | 1/2 finished waist | +/- 0.5 | 0.2" | 55.5 | 21.9" | 57.5 | 22.6" | 59.5 | 23.4" | 61.5 | 24.2" | 64.5 | 25.4" |
| F | Shoulder width | +/- 0.5 | 0.2" | 15 | 5.9" | 15.5 | 6.1" | 16 | 6.3" | 16 | 6.3" | 16 | 6.3" |
| O | Jacket length | +/- 1 | 0.4" | 73.5 | 28.9" | 75 | 29.5" | 76.5 | 30.1" | 78 | 30.7" | 79.5 | 31.3 |
| E | Sleeve length | +/- 1 | 0.4" | 62 | 24.4" | 63.5 | 25 | 65 | 25.6 | 66.5 | 26.2" | 68 | 26.8 |

Stylers
MADE TO MEASURE



DUNCAN BESPOKE
TAILORING