



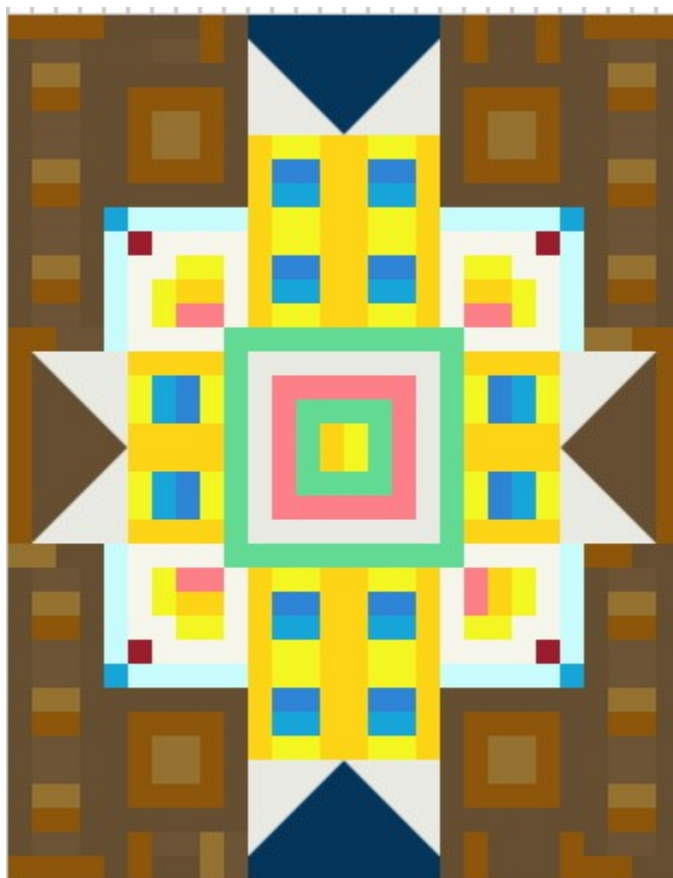
Episode 102 – Potato Chips = A Scrappy Quilt (v2)

This pattern is supplied free of charge as a gift, please give credit to “Sew With Debee” if you care to share, or better yet, direct your friends to my Youtube channel.

For additional information please refer to the Youtube video

Episode 102 – Potato Chips = A Scrappy Quilt (v2-Finale)

This pattern uses a series of potato chip rounds and are added to frame the larger centre as featured in video episode 101. The finished size without borders is a generous 56 x 72”, to upsize add more rounds or add more borders. BONUS Alternative Layout and Coloring Page on page 5)



Email: sewwithdebee@gmail.com

Please recommend subscribe, share, like & comment 6/30/2025



BLOCK D:

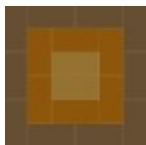
Make 12 Block measures 8.5 x 8.5" unfinished



For each block use 8 @ 4.5 x 2.5" using your chosen background fabric color group, shown in browns

BLOCK E:

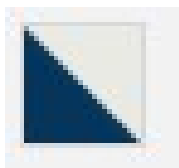
Make 4 Block measures 12.5 x 12.5" unfinished



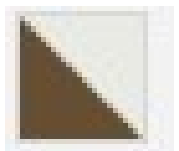
For each block use 18 @ 4.5 x 2.5" using your chosen background fabric color group, shown in browns.

Half Square Triangles:

I chose to use the 2 at a time way of making Half Square Triangles, with the fabric being 9.5" square this would equal 2. If you choose to use Flying Geese, they will need to be 16.5" x 8.5" unfinished



4 @ 8.5 x 8.5" unfinished in Navy/Blues with Light Background



4 @ 8.5 x 8.5" unfinished in Browns with Light Background

Strips:

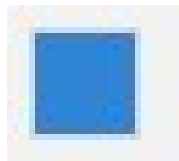
Demonstrated in a light blue to coordinate with fabric from 101, alternatively use a Light Fabric or Low Volume from your stash

8 @ 10.5 x 2.5"



Squares:

Demonstrated in a Dark Blue, these act as setting squares and can either be a high contrast fabric to show up or a color to blend into the background, either will be a lovely choose.




4 @ 2.5 x 2.5"


Potato Chip Units:

All of the following are using 4.5 x 2.5" fabric joined with 1/4" seams

 Make 2 in Dark Blue using 4 @ 4.5 X 2.5" plus

 Make 2 in Browns using 4 @ 4.5 2.5"

 Make 8 in Browns using 2 @ 4.5 x 2.5"

 Make 12 in Browns using 2 @ 4.5 x 2.5"

Unit assembly as shown in Video



Unit 1 – make 2 in Brown



Unit 2 – make 2 in Dark Blues (use the 4 extra blocks from 101 episode)



Unit assembly as shown in Video - continued



Unit 3:
Make 4 – 2 of each, see video for reference



Unit 4:
Make 4



Unit 5
Make 2 of each, see video for reference



Centre Unit as shown in Episode 101



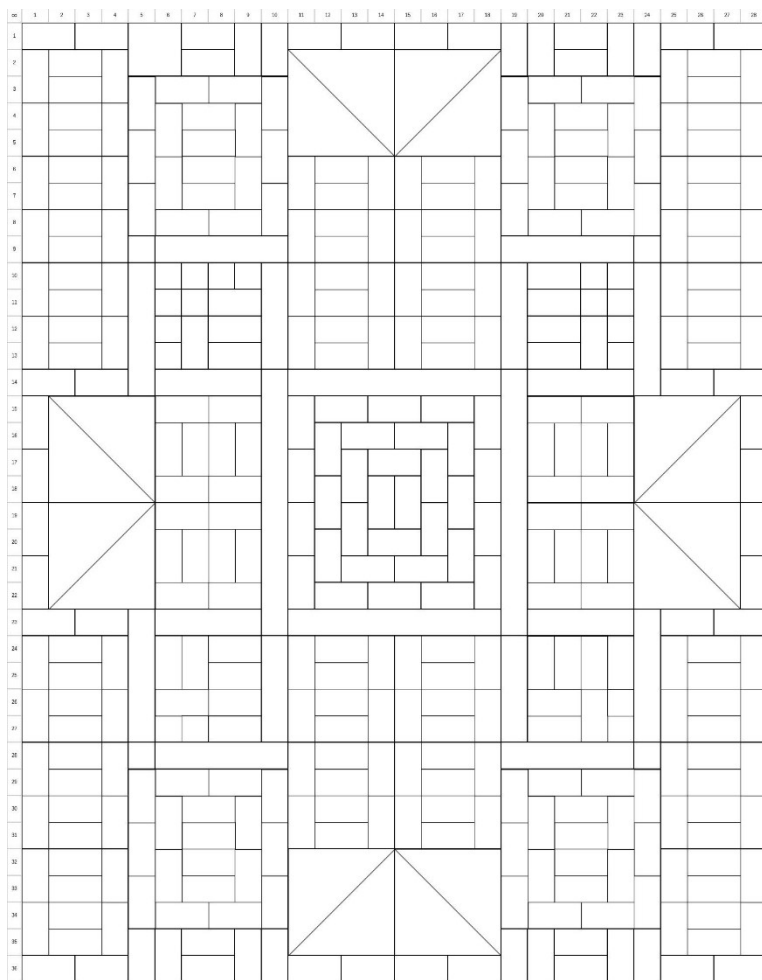
Email: sewwithdebee@gmail.com

Please recommend subscribe, share, like & comment 6/30/2025



Alternate Layout

The Half Square Triangles are assembled with the Wings beings the Lighter Fabric with Brown being used in place of the Dark Blue this layout also shows a secondary pattern.



BONUS: Coloring Page

