



The Source for Foundation Females

The 22nd Annual Herd Builder Braunvieh Female Sale

**Saturday, November 2, 2024 • 1 p.m.
3 Cedars Event Center
Nevada, Missouri**

THE 22nd ANNUAL HERD BUILDER BRAUNVIEH FEMALE SALE

To our Cattlemen Friends and Braunvieh Enthusiasts,

Each year the Braunvieh breed gains more exposure in the cattle industry. And this year the breed has made strides to improve our genetic evaluations, our breed records and customer service while maintaining the innate functionality of Braunvieh.

Braunvieh has much to offer the cattleman like mothering ability, carcass quality, good temperament, and sound structure. If you already have Braunvieh cattle, we think you'll be pleased with the quality offered in this sale. If you're studying the breed and how it could fit in your operation, come to the sale, evaluate the cattle, and make your decision about what the breed can do for you.

The quality of the cattle in this sale will certainly make it worth your time to examine them online or in person, and then put your bids in on sale day.

- Cattle will be displayed in outdoor pens prior to the sale.
- Cattle will be on display starting Friday afternoon. This will be a good time to get in the pens and evaluate the offering before the sale day crowd arrives.
- You can bid online through LiveAuctions.TV.
- You can join our conference call to bid over the phone.
- Contact any of the consignors for assistance with buying.

The founders of the Herd Builder sale set a quality standard to bring you superior Braunvieh females. When building a cow herd, few traits are more important than efficiency, fertility, and mothering ability. The Braunvieh momma cow excels at each of these traits, and you will find excellent examples in this offering.

Join us Nov. 2nd for a complimentary pre-sale lunch prior to the auction. We look forward to sharing a conversation about our cattle with you.

Thank You,

The Braunvieh Herd Builder Consignors

If you would like to eat at Gobbler's Roost restaurant (at the sale site) Friday evening before the sale or Saturday evening after the sale, call now (417) 448-4853 for a reservation as they will sell out early. See their website www.gobblersroostrest.com for the menu.

Cover Photo by:
Marilyn Brink

Videos & Supplement Information
Look for videos of the sale cattle plus sale order and supplement information at: www.brinkbraunvieh.com

**Saturday,
Nov. 2nd, 2024
1 p.m.**

**3 Cedars Event Center
Nevada, Missouri**

The facility is located approx. 10 miles southeast of Nevada MO. Please visit their website for more detailed directions

<https://www.gobblersroostrest.com/>

GPS address for the sale:
24327 E. Old Town Road
Nevada, MO 64772

There are Braunvieh bulls at the Green Springs Bull Test down the road from the Event Center. We invite you visit the facility to view and evaluate these bulls.

The cattle will be on display at the sale facility Friday, November 1st. Come early, look through the cattle and enjoy a visit with us about our programs.

The 22nd Annual Herd Builder Sale

Andrew JonesLot 42
Big Blue Braunvieh..... Lot 39-41
Brink Livestock Lots 16-22
Cedar Bluff FarmLots 44-47
C Farms Lots 14-15
Jay H FarmsLots 33-34
Keith & Keith Lots 1-4
Lane & Lane Lots 8-13

Lazy H FarmsLot 43
Middle Creek Braunvieh..... Lots 37-38
Patrick Spring Cattle Co. Lots 35-36
R&D Farms Lots 23-32
Rock Creek Braunvieh Lots 5-7
Scott Houghton Lot 48

Braunvieh EPDs: The BAA transitioned to IGS EPDs several years ago. With over 19 million animals of multiple breeds, this is a stronger genetic evaluation than any one breed could do alone. By switching to the multi-breed genetic evaluation with IGS, the baseline for BAA EPDs shifted to coincide with the other cattle in the database. To better understand the baseline, we have included percentile rank

on animal's EPDs. EPDs in this catalog were current Oct. 4, but with weekly calculations, may adjust by sale day. View current EPDs in the BAA database: braunvieh.digitalbeef.com

Breed Average EPDs for Non-Parent Braunvieh (young cattle)

CED	BW	WW	YW	MM	TM	CEM	API
12	0.9	54	77	13	40	5	114.25

Sale Day Phone

(785) 766-8713

Online Bidding Details

LiveAuctions.TV will be providing online bidding access. Go to: www.LiveAuctions.tv and click on "Register to Bid". Follow instructions to register or login to your existing account. The sale lots will be posted to that site prior to sale. If you have questions contact LiveAuctions.TV Support (682) 816-4900.

Sale Day Conference Line for Bidding

We encourage everyone possible to use the Online Bidding Service. However, if you don't have adequate internet service for bidding you may call the conference call line to listen to the auction and place bids. **Please call Marilyn at (785) 766-8713 at least 1 hour prior to the sale** to register to bid and obtain the conference call phone number, access code, and a buyer number. The conference call line will open 10 minutes prior to the sale start and remain open during the entire sale, as long as there are bidders on the call.

Sale Accommodations

Country Inn & Suites by Radisson (417) 667-9292
Holiday Inn Express & Suites (417) 283-6177
Americas Best Value Inn & Suites..... (417) 667-6777

Sale Staff

Bill Nance, auctioneer..... (417) 214-0093

Terms & Conditions

Terms of the sale are cash or check (payable to Herd Builder Sale) with proper I.D., and settlement must be made sale day and/or before anything is loaded or leaves the sale

facility. Every lot will be sold to the highest bidder, with the auctioneer settling any bidding disputes. Announced changes in catalog information sale day will take precedence over printed material in the catalog.

Registrations and Transfers

A certificate of registry and transfer will be furnished for each animal at no cost to the buyer within 45 days after settlement of animals purchased.

Delivery

We will assist buyers in arranging shipment.

Health

All cattle will have proper health certificates for shipment. If your state requires TB tests, please contact individual consignors prior to the sale regarding testing.

Insurance

All animals become the property of the purchaser and will be at purchaser's risk at the time of sale. Insurance will be available should buyers wish to purchase it.

Liability

All persons attending this sale and related functions do so at their own risk. The sale consignors and 3 Cedars Event Center assume no liability, legal or otherwise, for any accidents or illness that may occur.

Air Transportation

Major airlines have regular service into Kansas City, Mo.

Absentee Bids

If you wish to make purchases but are unable to attend this sale, please contact one of the consignors.

Herd Builder Genetic Defect Guarantee

The cattle in this sale are guaranteed to be free of known Genetic Defects as outlined in the Braunvieh Association of America Rules and Regulations. If an animal sold in this sale is found to have a genetic defect, it will be the responsibility of the seller of that animal to satisfy the buyer with a refund or replacement. Buyer must contact seller within 12 months from the sale date to implement the guarantee.

Sale Catalog Data:

Sale Lot #

01

Name
Animal Category
Registration # Date of Birth Tattoo

BLC EZ SLEEP 811G

Purebred Bull
PB96882 Calved 03/02/2019 Tattoo BLC 811G

Pedigree

HPS
Polled
Act. BW
66
WW/ratio
588/111
API Index
Rank
150.83
1%
% BU
91.3%

FR YANKEE Y47
SG COLONIAL 924D
ALEXANDER UNO MEMPHIS

MHF CAPTAIN CLARK W911
BLC SACA 711E
BLC SIESTA 713C

FR ERRICK W31
FR TREAT T713
DHR CASI UNO
MISS RCB M208
MHF SYNERGY S627
MHF R583 ET
BLC SLEEP EZ 583Y
SG DIAMOND 913A

	CED	BW	WW	YW	Milk	TM	CEM
EPD	23.2	-4.6	38	46	23	42	12.4
% Rank	1%	2%	90%	90%	5%	35%	3%

Calving Ease, Weight & Repro Traits EPDs and Percentile Ranks

CED: Calving Ease Direct
BW: Birth Weight
WW: Weaning Weight
YW: Yearling Weight
Milk: Milk
TM: Total Maternal
CEM: Calving Ease Maternal

HPS: Horned/Polled/Scur
ACT BW: Actual Birth Weight
WW/ratio: Actual Weaning weight and ratio is available
API Index: All Purpose Index and rank
% BU: % Braunvieh

Performance Info & EPDs

Calving Ease Direct (CED): A higher CED EPD predicts a sire that will have a higher percentage of unassisted calves.

Birth Weight (BW): Compares the differences in the weight of calves at birth. It is measured in pounds, and cattle with higher BW EPDs are predicted to produce heavier calves.

Weaning Weight (WW): The WW EPD is expressed in pounds and predicts differences in weaning weight of a sire's calves. Bulls with higher WW EPDs predict heavier calves across the scale at weaning.

Yearling Weight (YW): Just like WW, only at the next stage of life. The YW EPD is expressed in pounds. Higher YW EPDs are likely to produce heavier yearlings

Milk: The hardest trait to measure, since we don't measure milk production in beef cows. The MK EPD is measured in pounds of calf weaning weight due to his mother's milking ability. A higher MK EPD predicts that a bull will sire daughters who raise heavier calves due to their milk production.

Total Maternal (TM): Total Maternal EPD is a simple formula. $TM = MK\ EPD + \frac{1}{2} WW\ EPD$. It measures impact on calf weaning weight due to both milk production and the cow's genetics for growth. Bulls with a higher TM EPD should sire daughters with a bigger impact on their calves' weaning weight.

Calving Ease Maternal (CEM): Measures the ability of a bull's daughters to calve unassisted as two year olds. The higher the CEM EPD, the easier calving should be when a bull's daughters have that first calf.

All Purpose Index (API): Evaluates sires for use on the entire cow herd (bred to both first-calf heifers and mature cows) with the portion of their daughters required to maintain herd size retained and the remaining heifers and steers put on feed and sold in quality-based marketing scenarios. Combines traits of importance for both maternal characteristics, as well as traits of importance in the fed cattle market. Commercial customers who raise their own replacement heifers should consider API as their index of choice.

KEITH & KEITH BRAUNVIEH

Edsel B. Keith
1463 E 355th Rd., Bolivar, MO 65613
(417) 253-4693

Lots
1-4

Keith &
Keith 1

MISS KKB L133

Fullblood Spring Open Heifer
OB108107 Calved 05/11/2023 Tattoo KKB L133

HPS
Horned
Act. BW
85
WW/ratio
API Index
Rank
80.37
>95%
% BU
100.0%

QUINTO 7358- 4
BRD QUINTO'S IMAGE F267
RJB MS X270

BODINE'S DOUBLE TIME X125
MISS KKB D243
MISS KKB W344

KALIF 13585-907 MENZNAU
KOENIGIN
TLC BUD
RJB MS FREDDIE S170
BODINE'S MR DOUBLE GENE U171
RBB MS PRAIRIE P125
GLB MOMBO ET
SBI 4316 ET

	CED	BW	WW	YW	Milk	TM	CEM
EPD	5.0	6.6	56	70	18	46	0.9
% Rank	>95%	>95%	20%	40%	20%	15%	>95%

- Nice spring born open heifer. Broke to tie and was displayed at Farm Fest.

Keith &
Keith 3

MISS KKB L165

Fullblood Spring Open Heifer
OB108108 Calved 06/13/2023 Tattoo KKB L165

HPS
Horned
Act. BW
68
WW/ratio
API Index
Rank
91.72
90%
% BU
100.0%

QUINTO 7358- 4
BRD QUINTO'S IMAGE F267
RJB MS X270

LPB POWERSTROKE
LPB PRINCESS KATE
LPB PRINCESS DIANA

KALIF 13585-907 MENZNAU
KOENIGIN
TLC BUD
RJB MS FREDDIE S170
MR GOLDEN LINK 6193ET
WARWICK FARMS VERA 210
DADO 11727 HEINZENBERG
MS TLC PRINCESS J9226 ET

	CED	BW	WW	YW	Milk	TM	CEM
EPD	10.1	3.4	46	57	19	42	4.8
% Rank	75%	80%	70%	80%	15%	35%	50%

- Nice spring born open heifer with many favorites in her pedigree. Broke to tie and was displayed at Farm Fest.

Keith &
Keith 2

LLB MISS L312

Fullblood Fall Open Heifer
OB108442 Calved 10/14/2023 Tattoo LLB L312

HPS
Horned
Act. BW
88
WW/ratio
API Index
Rank
69.41
>95%
% BU
100.0%

GRANAT (NC) MAX 14238-21
MR KKB/LLB J187 GRANAT ET
MS MIZZOU 309 ET

TLC TRUE GRIT W9311 ET
LLB MISS Y12
MISS AWESOME Y12

GRANAT 6350-200 LEHN
FINK
MARKUS (NC) ROLF 16004-36
MISS W8R A97/1 ET
NORTHSTAR VERNON AEB53A-6252
MS TLC JILLIAN G7214 ET
SIMPLY AWESOME ET
JMCB MISS JAMIE

	CED	BW	WW	YW	Milk	TM	CEM
EPD	7.1	4.7	51	67	14	40	2.1
% Rank	95%	95%	45%	50%	65%	50%	95%

- Nice fall born open heifer. She is ready for breeding to the bull of your choice!

Keith &
Keith 4

MISS KKB L348

Fullblood Spring Open Heifer
OB109791 Calved 12/14/2023 Tattoo KKB L348

HPS
Horned
Act. BW
78
WW/ratio
API Index
Rank
85.28
95%
% BU
100.0%

QUINTO 7358- 4
BRD QUINTO'S IMAGE F267
RJB MS X270

BODINE'S DOUBLE TIME X125
MISS KKB D297
MISSKKB X364

KALIF 13585-907 MENZNAU
KOENIGIN
TLC BUD
RJB MS FREDDIE S170
BODINE'S MR DOUBLE GENE U171
RBB MS PRAIRIE P125
MCB MR F020 7123
MS SBI G7210 ET

	CED	BW	WW	YW	Milk	TM	CEM
EPD	6.9	5.2	53	67	19	45	2.8
% Rank	95%	95%	35%	50%	15%	20%	85%

- Nice spring born open heifer. Broke to tie and was displayed at Farm Fest.

Online Bidding Available

LiveAuctions.TV

ROCK CREEK BRAUNVIEH

Kendall Schlake • c (402) 300-0745
71310 570th Ave., Fairbury, NE 68352
kendallschlake@gmail.com
www.rockcreekbraunvieh.com

Lots
5-7



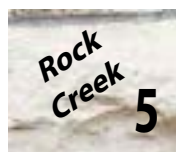
Lot 5- MISS RCB L354 ET



Lot 6 - MISS RCB L360



Lot 7 & 7A: MISS RCB J150 ET & MR. RCB M463



MISS RCB L354 ET

Purebred Fall Open Heifer

PB108334 Calved 08/14/2024 Tattoo RCB L354ET

HPS
Polled
Act. BW
92
WW/ratio
API Index
Rank
103.82
65%
% BU
90.3%

MR RCB N401
RCB BLACK RAIDER S603
MISS RCB N352 ET

MR TNB BAGLEY'S ROMEO 801 ET

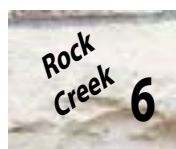
MISS RCB JULIETTE Z200

MISS TNB FOREVER LADY 742

MR RCB M213
MISS RCB M206
WAV RUMBLES 103L
MS ALEX F88
SILVER BULLET 5549
MISS SAMIRAL OF PFI C340
MR ERB P-4-7
MS FMF L112

	CED	BW	WW	YW	Milk	TM	CEM
EPD	10.4	2.5	36	43	19	37	4.2
% Rank	75%	65%	>95%	>95%	15%	75%	70%

- Fall Open Heifer - A stout, growthy female out of a top cow family. 1/2 Sib to J150 (Lot 7) HomoBlack as well. "Old School" breeding on the Sire side. This one is a top performer.



MISS RCB L360

Purebred Fall Open Heifer

PB108337 Calved 08/19/2023 Tattoo RCB L360

HPS
Polled
Act. BW
83
WW/ratio
API Index
Rank
107.16
60%
% BU
91.5%

WW DUNN 883F
MR RCB J177
MISS TNB FOREVER LADY 742

JBB 6465S

MISS RCB F852

MISS RCB A300 ROBIN ET

WW DUNN 665D ET
WW MS BP 2104Z
MR ERB P-4-7
MS FMF L112
MR TLC BLACK TODD K2369 ET
MISS LSLC POLLED 264K
MR REUBEN JR
MISS RCB N352 ET

	CED	BW	WW	YW	Milk	TM	CEM
EPD	10.5	3.5	46	62	13	36	1.8
% Rank	75%	80%	70%	65%	75%	80%	95%

- Fall Open Heifer - A sweet fronted, feminine heifer out of a cow that produces well. L360 is the 3rd daughter to be sold out of Miss RCB F853 in the Herdbuilder Sale. HomoBlack & HomoPolled.



MISS RCB J150 ET

Purebred Fall Calving Cow & Bull Calf

PB103633 Calved 08/10/2021 Tattoo RCB J150

HPS
Polled
Act. BW
83
WW/ratio
570/90
API Index
Rank
101.73
60%
% BU
89.3%

MR HLJ SWAGGER Z203

MR HLJ C503

MISS PAIGE

MR TNB BAGLEY'S ROMEO 801 ET

MISS RCB JULIETTE Z200

MISS TNB FOREVER LADY 742

MHF RENOVATION R575 (NC) ET
MISS HLJ BROOKE
BLACK ICON H27 ET
MISS DARCY
SILVER BULLET 5549
MISS SAMIRAL OF PFI C340
MR ERB P-4-7
MS FMF L112

	CED	BW	WW	YW	Milk	TM	CEM
EPD	11.7	1.5	44	60	17	39	6.5
% Rank	35%	35%	80%	70%	30%	55%	30%

- 4 Yr old black cow with calf at side. HomoPolled. The hard work is done and this young cow has a great future producing bulls. Look at the calf at side out of BBB 2215.
- Lot 7A:** Mr. RCB M463 (PB109935); Calf is 92% and HomoPolled. Hope to have calf DNA by sale time. Calf born 9/2/2024, BW 82 lbs., sired by Mr. BBB 2215 (PB105624).

LANE & LANE
Larry Lane
1339 E 515th Rd., Morrisville, MO
65710
(417) 830-7318

**Lots
8-13**

Lots 8-13

HPS
Horned
Act. BW
86
WW/ratio
API Index
Rank
90.74
90%
% BU
100.0%

LLB MISSD-58

	CED	BW	WW	YW	Milk	TM	CEM
EPD	9.2	4.7	62	85	13	44	4.6
% Rank	85%	95%	10%	10%	75%	25%	50%

- 

LLB MISS H71

Fullblood Fall Calving Cow & Bull Calf
OB102905 Calved 05/01/2020 Tattoo LLB H71

HPS
Horned
Act. BW
86
WW/ratio
API Index
Rank
90.84
85%
% BU
100.00%

	CED	BW	WW	YW	Milk	TM	CEM
EPD	9.5	4.5	53	71	15	42	4.3

- LLB MISS G-253**
Fullblood Fall Calving Bred Cow
OB102899 Calved 09/19/2019 Tattoo LLB G253

HPS
Horned
Act. BW
92
WW/ratio
API Index
Rank
83.16
95%
% BU
100.0%

ISS LLB A52

	CED	BW	WW	YW	Milk	TM	CEM
EPD	7.0	6.2	62	86	14	45	4.0
% Rank	95%	>95%	10%	10%	60%	20%	65%

- LLB MISS F-53**
Fullblood Fall Calving Bred Cow
OB102888 Calved 10/15/2018 Tattoo LLB F53

HPS
Horned
Act. BW
88
WW/ratio
API Index
Rank
82.05
95%
% BU
100.0%

	CED	BW	WW	YW	Milk	TM	CEM
EPD	7.0	5.4	60	79	15	45	3.7
% Rank	95%	95%	10%	20%	50%	20%	65%

- 

Lane & Lane

10

LLB MISS L937

Fullblood Fall Open Heifer

OB108806 Calved 09/25/2023 Tattoo LLB L937

HPS
Horned
Act. BW
89
WW/ratio
API Index
Rank
65.76
>95%
% BU
100%

	CED	BW	WW	YW	Milk	TM	CEM
EPD	5.7	6.2	52	65	17	43	2.1
% Rank	> 95%	> 95%	100%	55%	30%	30%	95%

	CED	BW	WW	YW	Milk	TM	CEM
EPD	5.7	6.2	52	65	17	43	2.1
% Rank	> 95%	> 95%	100%	55%	30%	30%	95%

- LLB MISS L952**
Fullblood Fall Open Heifer
OB108814 Calved 11/23/2023 Tattoo LLB L952

HPS
Horned
Act. BW
92
WW/ratio
API Index
Rank
64.92
>95%
% BU

	CED	BW	WW	YW	Milk	TM	CEM
EPD	6.2	5.9	51	66	13	38	2.6

	CED	BW	WW	YW	Milk	TM	CEM
EPD	6.2	5.9	51	66	13	38	2.6

- 7

C FARMS
 Todd Clubb
 6036 31st Ave., Vinton, IA 52349
 (319) 330-3590
 todd.a.clubb@gmail.com

Lots
14-15

C Farms
14 **C FARMS MISS 9475**
 Purebred Spring Calving Bred Cow
 PB97635 Calved 04/03/2019 Tattoo CFQB 475G

HPS
Horned
Act. BW
88
WW/ratio
508/101
API Index
Rank
123.03
15%
% BU
93.2%

DRR WIZARD OF OZ U570

BLC WARLOCK 470D

BLC LADY C404 460R

MHF PURE COUNTRY U8149 (NC)

C FARMS MISS 4383

C FARMS MISS 0453

DRR OZ-MAN S144

MISS DRR ARIEL R730

SPLIT DIAMOND U400 C404

MISS SPLIT DIAMOND L560

MHF R595

MHF S664 ET

C FARMS SURONUF 8076

C FARMS MISS 5152

EPD	CED	BW	WW	YW	Milk	TM	CEM
18.5	0.4	53	73	24	50	10.1	4%
% Rank	3%	20%	30%	30%	2%	10%	4%

- This young cow has a solid cow family behind her and she's keeping up the reputation. She's sired by BLC Warlock470D who is in the top 1% in CED, CEM, STAY, with an API index of 146. Her dam has never missed calving with a total of 9 calves and coming with another one next spring. She's a shining example of our program being bred to BLC EZ Sleep. The Warlock daughters have always impressed me, this year we saw what happens when you use EZ on the Warlock daughters. Makes them even better, which I wasn't sure was possible.
- Ultrasound checked bred on 9/17 at 70 days, which puts her mid-April for a due date. Vet says it's a heifer calf to top it off!
- Service sire: BLC EZ Sleep 811G (PB96882).



Lot 14 - C FARMS MISS 9475

C Farms
15 **C FARMS MISS 9157**
 Purebred Spring Calving Bred Cow
 PB97616 Calved 03/06/2019 Tattoo CFQB 157G

HPS
Horned
Act. BW
66
WW/ratio
512/-
API Index
Rank
117.66
25%
% BU
88.8%

MHF R595

MHF PURE COUNTRY U8149 (NC)

MHF S664 ET

BODINES BLACK MAGIC C508

C FARMS MISS 7677

FR SUNRISE X4

BNL PURE CHROME 6901F

MHF M230 ET

PFI "WALKER" J915

MISS LIFELINE K0020 ET

C FARMS MR 7902

RBB MS 508P

C FARMS SURONUF 8076

C FARMS MISS SUNRISE 4111

EPD	CED	BW	WW	YW	Milk	TM	CEM
11.1	2.0	48	68	12	36	3.6	
% Rank	50%	45%	55%	45%	80%	75%	65%

- The Pure Country daughters have been an excellent cow line for us. They are good uddered, great mothering, sound cows with great dispositions and stay in the herd for a long time. This cow fits that bill as well. It's hard to find one with a better disposition than her. Her pedigree speaks for itself, being loaded with tried-and-true genetics both top and bottom. Whoever takes this cow home will enjoy her for years to come. She was ultrasounded safe with a Warlock heifer calf. This Warlock baby tops off the package as they are totally awesome.
- Ultrasound checked bred on 9/17 at 70 days, which puts her mid-April for a due date.
- Service sire; BLC Warlock 470D (PB90070)



Lot 15 - C FARMS MISS 9157

BRINK LIVESTOCK
 Bob & Marilyn Brink
 765 80th St., Piedmont, KS 67122
 Bob (785) 766-6449 • Marilyn (785) 766-8713
 kanwaka@powwwwer.net

Lots
16-22



Lot 16 - BLC COURTNEY 129H

Brink 16 **BLC COURTNEY 129H**
 Purebred Fall Calving Cow & Bull Calf
 PB98958 Calved 03/12/2020 Tattoo BLC 129H

HPS
Polled
Act. BW
77
WW/ratio
566/105
API Index
Rank
127.40
10%
% BU
91.9%

DRR WIZARD OF OZ U570
BLC TORONTO 618D
 SG OZ SLIPPER 918Y

MHF SYNERGY S627
BLC SYNERGI 029U
 BRG COW F029

DRR OZ-MAN S144
 MISS DRR ARIEL R730
 BLC TRU POLL RANGER 516T
 DRR OZ'S REINA U518
 PFI FOCUS P411
 MISS PREMIUM PLUS PFI P434
 BRG POLL CAT D630
 BRG CONNECTION D542

	CED	BW	WW	YW	Milk	TM	CEM
EPD	15.5	-0.2	50	62	13	38	7.2
% Rank	10%	15%	45%	60%	70%	60%	15%

- This Toronto daughter is just 4 years old, but has already proven herself. Her 2-year-old daughter by EZ Sleep has a fall baby and will be taking her mother's place in the herd. A couple years ago, we realized that a lot of our best females had the Venture 317A bull in their pedigrees. We decided to go back and AI more heifers and cows to him, and this calf at side is a result.
- Lot 16A:** Polled purebred bull calf, BLC Endeavor 329M (PB110030) born 9/10/2024, tattoo 329M, birth wt. 72 lb., sired by BLC Venture 317A.



Lot 17 & 17A - BLC URSA 768J & BLC GAUCHITA 768M

Brink 17 **BLC URSA 768J**
 Purebred Fall Calving Cow & Heifer Calf
 PB101613 Calved 08/21/2021 Tattoo BLC 768J

HPS
Polled
Act. BW
68
WW/ratio
608/110
API Index
Rank
118.59
25%
% BU
90.1%

MHF T719
PJDC TEDDY BEAR
 BCC MISS XENA

BLC TORONTO 618D
BLC COURTNEY 668G
 MHF D68

MCB MR 5003 A518R
 BODINE'S R39
 4Z MR T201 PLD
 MISS BCC JAZZY
 DRR WIZARD OF OZ U570
 SG OZ SLIPPER 918Y
 FR YANKEE Y47
 MHF B85

	CED	BW	WW	YW	Milk	TM	CEM
EPD	17.2	0.6	50	68	17	42	7.2
% Rank	4%	20%	45%	45%	35%	35%	15%

- Homo polled cow and calf. This 3 year old Teddy Bear daughter is putting it all into her second calf at side. We bred her to an 8 year old bull, BLC Outrider, that had worked at Darkside Braunvieh and in commercial herds since he was a yearling. His dam was 13 years old at his birth, and Outrider is a full brother to the Beaumont bull that has done so much for the Alexander herd in Texas. With this longevity, and the success of Beaumont, we turned Outrider out with a group of females. His heifer calf here tells the story.
- Cow sells open.
- Lot 17A:** Homo polled purebred heifer calf, BLC Gauchita 768M (PB110031) born 9/14/2024, tattoo 768M, birth wt. 69 lb., sired by BLC Outrider 571C.

Brink 18 **BLC GOOD WITCH 371L**
 Purebred Fall Open Heifer
 PB107994 Calved 09/01/2023 Tattoo BLC 371L

HPS
Polled
Act. BW
70
WW/ratio
608/110
API Index
Rank
119.67
30%
% BU
93.1%

BLC VANGUARD 483Y
BLC VENTURE 317A
 BLC RUTH 217X

DRR WIZARD OF OZ U570
BLC WICKED WITCH 371F
 BLC SACA 471A

VISTA 11L E530 P588
 BLC MISS DBL EAGLE 483R
 BLC TRU POLL RANGER 516T
 BLC VELVET 216U
 DRR OZ-MAN S144
 MISS DRR ARIEL R730
 MHF CAPTAIN CLARK W911
 BLC SPICY VIXON 470X

	CED	BW	WW	YW	Milk	TM	CEM
EPD	13.8	-0.1	40	52	10	30	9.9
% Rank	25%	20%	95%	90%	95%	>95%	5%

- 371L is out of the "Crackers" cow that our niece Jordyn Walker showed with much success. Crackers has retired from the showing but is making a terrific mother, as is her 2 year old daughter that just calved in our fall herd. This heifer has tremendous potential as a front pasture cow.
- Open and ready to breed.



Lot 19 - BLC DAYDREAM BELIEVER 671K



BLC DAYDREAM BELIEVER 671K

Purebred Spring Calving Bred Heifer

PB106339 Calved 10/26/2022 Tattoo BLC 671K

HPS
Polled
Act. BW
64
WW/ratio
API Index
Rank
142.60
4%
% BU
92.2%

SG COLONIAL 924D

BLC EZ SLEEP 811G

BLC SACA 711E

BLC TORONTO 618D

BLC COURTNEY 471H

BLC SPICY VIXON 470X

FR YANKEE Y47

ALEXANDER UNO MEMPHIS

MHF CAPTAIN CLARK W911

BLC SIESTA 713C

DRR WIZARD OF OZ U570

SG OZ SLIPPER 918Y

VISTA 11L E530 P588

BLC LADY C404 460R

EPD	CED	BW	WW	YW	Milk	TM	CEM
21.1	-1.0	47	57	16	40	11.5	2%
% Rank	1%	10%	65%	80%	40%	50%	2%

- Homo polled Daydream Believer is out of the bedrock "470" cow family on our ranch. This will be one of the very few that we have sold. She has the broody and maternal look that we are getting from EZ Sleep. We calved out four EZ Sleep first calf heifers this fall, and we could build a herd around any one of them.
- AI'd 5/12/2024 to BLC Tru Poll Ranger 516T (PC60594). Safe in calf.



Lot 20 - BLC DREAM DATE 424L



BLC DREAM DATE 424L

Purebred Fall Open Heifer

PB106810 Calved 03/12/2023 Tattoo BLC 424L

HPS
Polled
Act. BW
80
WW/ratio
576/108
API Index
Rank
152.92
1%
% BU
90.7%

SG COLONIAL 924D

BLC EZ SLEEP 811G

BLC SACA 711E

BLC VENTURE 317A

BLC VENTURA 524E

BLC SYNERGI 522Y

FR YANKEE Y47

ALEXANDER UNO MEMPHIS

MHF CAPTAIN CLARK W911

BLC SIESTA 713C

BLC VANGUARD 483Y

BLC RUTH 217X

MHF SYNERGY S627

BLC GYPSY 521U

EPD	CED	BW	WW	YW	Milk	TM	CEM
17.4	-0.1	49	63	20	45	11.1	3%
% Rank	10%	20%	55%	60%	10%	20%	3%

- 424L's dam was one of the few that we saved back for our program when we had our Herd Reduction sale 3 years ago. Her mother has an ideal udder, is deep ribbed and is one of our best cows. This EZ Sleep yearling heifer combined the best from her sire and dam. Excellent calving ease and balanced EPDs put her in the top 1% of the breed for API and top 10% for TI.
- Open and ready to breed



Lot 21 - BLC GRACE 685M



BLC GRACE 685M

Purebred Spring Open Heifer

PB109784 Calved 03/14/2024 Tattoo BLC 685M

HPS
Polled
Act. BW
77
WW/ratio
API Index
Rank
13.60
10%
% BU
91.8%

BLC EZ SLEEP 811G

BLC HIGH NOON 624J

BLC SIGNORA COURTNI 524G

BLC YANKEE RIVERA 801E

BLC SIGNORA COURTNI 524G

BLC VENTURA 485G

SG COLONIAL 924D

BLC SACA 711E

BLC TORONTO 618D

BLC SYNERGI 522Y

FR YANKEE Y47

SG BLOND EXPRESSO 901C

BLC VENTURE 317A

BLC VIXON 484Y

EPD	CED	BW	WW	YW	Milk	TM	CEM
15.6	0.1	54	77	16	43	8.5	15%
% Rank	10%	20%	30%	20%	40%	30%	15%

- This pedigree is built on Brink bulls – High Noon, EZ Sleep, Toronto, Yankee Rivera and Venture 317A. Grace 685M has a great phenotype and balanced EPDs with calving and growth traits all ranking in the top 30% or better of the breed! Add them up to top 10% API and TI. She'll get better and better as she matures. Pictured the day after she was weaned out of the pasture.



BLC CLASSIC GRACE 010L

Purebred Spring Open Heifer
PB106822 Calved 03/03/2022 Tattoo BLC 010L

HPS
Polled
Act. BW
68
WW/ratio
458/91
API Index
Rank
161.26
1%
% BU
91.1%

BLC EZ SLEEP 811G
BLC HIGH NOON 624J
BLC SIGNORA COURTNI 524G

BLC VENTURE 317A
BLC VENTURA 012H
BLC DOROTHY 012E

SG COLONIAL 924D
BLC SACA 711E
BLC TORONTO 618D
BLC SYNERGI 522Y
BLC VANGUARD 483Y
BLC RUTH 217X
DRR WIZARD OF OZ U570
BLC KATARINA 305X ET

	CED	BW	WW	YW	Milk	TM	CEM
EPD	21.3	-3.0	47	66	14	37	13.2
% Rank	1%	2%	65%	50%	65%	75%	1%

- Here's another High Noon heifer with that sought after spread in her EPDs... top 1% for CED, 2% for BW and still comes in at 50% for YW. She's a moderate size heifer that has all it takes to be a productive female. Plus she's homo polled. She traces back to our "Granny" cow born in 1981, and who raised her last calf at 23 years old.
- Open and ready to breed



Lot 22 - BLC CLASSIC GRACE 010L



BLC EZ SLEEP 811G

Purebred Reference Sire
PB96882 Calved 03/02/2019 Tattoo BLC 811G

HPS
Polled
Act. BW
66
WW/ratio
588/111
API Index
Rank
150.83
1%
% BU
91.3%

FR YANKEE Y47
SG COLONIAL 924D
ALEXANDER UNO MEMPHIS

MHF CAPTAIN CLARK W911
BLC SACA 711E
BLC SIESTA 713C

FR ERRICK W31
FR TREAT T713
DHR CASI UNO
MISS RCB M208
MHF SYNERGY S627
MHF R583 ET
BLC SLEEP EZ 583Y
SG DIAMOND 913A

	CED	BW	WW	YW	Milk	TM	CEM
EPD	23.2	-4.6	38	46	23	42	12.4
% Rank	1%	2%	90%	90%	5%	35%	3%

- Sire of lots 19 & 20; Grandsire to lots 21 & 22
- Service Sire to Lot 14



Ref. Sire - BLC EZ SLEEP 811G

R & D Farms



MS RDF BLUE XEROX 871D

Purebred Fall Calving Cow & Bull Calf
PB91719 Calved 09/19/2016 Tattoo RDF 871

HPS
Polled
Act. BW
60
WW/ratio
514
API Index
Rank
108.83
45%
% BU
92.1%

GLB POLLED PLUS 5003 (NC) ET
MHF XEROX X002
MHF U850

MHF PUREFECTION P405 (NC) ET
MS RDF BLUE
TEQUILA BLUE

E L CONQUISTADOR
MISS CJM Z011
MHF RENOVATION R575 (NC) E
MISS GOLDEN LINK 2530
BNL PURE CHROME 6901F
MISS LIFELINE K0020 ET
WTR LAREDO 210L ET
MS RDF AMBER

	CED	BW	WW	YW	Milk	TM	CEM
EPD	15.2	0.5	45	62	15	38	5.0
% Rank	10%	20%	75%	60%	50%	60%	45%

- Homozygous Polled- This is one of the easiest keeping cows we have ever owned. Blue is a level topped, square hipped, deep bodied tank of a cow.
- Lot 23A:** Bull calf born 9/15/2024, BW 76 lbs., sired by WW Flagstaff 604D (BC88356). Calf will be Homo Polled and possibly Homo Black

R & D FARMS
Daniel & Bobbie Roberts
361 Draper Rd., Franklin, KY 42134
Office (270) 598-9848 • Daniel (270) 392-0688
randdfarmsbraunvieh@msn.com

Lots 23-32



Lot 23 & 23A - MS RDF BLUE XEROX 871D & Bull Calf



MS RDF REMEDY 1304K

Purebred Fall Calving Bred Heifer
PB107384 Calved 10/19/2022 Tattoo RDF 1304

HPS
Polled
Act. BW
82
WW/ratio
440/94
API Index
Rank
106.67
% BU
90.7%

MHF T719
PJDC TEDDY BEAR
BCC MISS XENA

MR GOLDEN LINK 6193ET
DOUBLE J REMEDY R538
MISS GOLDEN LINK 20110

MCB MR 5003 A518R
BODINE'S R39
4Z MR T201 PLD
MISS BCC JAZZY
SAMBO (NC) JORDI 8240-94
FORELLE 9708-5
MR GOLDEN LINK 9113 ET
MISS GOLDEN LINK 6154

	EPD	CED	BW	WW	YW	Milk	TM	CEM
% Rank	11.7	3.1	52	70	19	45	4.4	70%
	45%	75%	40%	40%	15%	20%		

- Here's a really nice traditional colored, double polled female out of the well known Teddy Bear and Double J Remedy cow. Remedy is a half sib to Ms RDF Millie that Elynn Zeigenbein had a pretty successful show career with.
- Due end of November to Homo Black, Homo Polled Stonewall Black Jackl (PB102021).



Lot 24 - MS RDF REMEDY 1304K



QPG MISS ANNIE G001

Fullblood Spring Calving Bred Cow
OB96381 Calved 02/03/2019 Tattoo QPG G001

HPS
Horned
Act. BW
68
WW/ratio
456
API Index
Rank
69.73
>95%
% BU
100%

PPASSGAL 5995-200 LEHN
MARKUS (NC) ROLF 16004-36
BERNA 4990-294 OBERRIET

PSSB MR RAYCO
QPG MISS ADRIAN D188
PMISS KKB R247

PRINZ 8713-27 SCHOENENBERG
GUARDA 6334-226 GOSSAU SG
MARKUS 1076-716 FAELANDEN
BLUEMLI 1180-861
MCB TEB MR 8018 0418
MISS CHEYENNE X05
MR KKB N266
MISS KKB N334

	EPD	CED	BW	WW	YW	Milk	TM	CEM
% Rank	6.0	6.6	52	65	4	30	0.3	0.3
	>95%	>95%	35%	50%	>95%	95%	>95%	

- Good producing fullblood cow in her prime with lots of older Swiss genetics in her pedigree. Daughter sells as Lot 32 RDF 1429.
- A/d on 5-30-2024 to TLC Turnpike (OB30072). Pasture exposed to BLU BLC JBB Deacon 452D (PB90240) (5-15-2024 to 8-19-2024).
- Updated pregnancy status available soon.



Lot 27 -BLC VENTURA 001G



MHF C68

Purebred Spring Calving Bred Cow
PB88022 Calved 10/05/2015 Tattoo MHF C68

HPS
Polled
Act. BW
72
WW/ratio
456
API Index
Rank
117.85
40%
% BU
94.7%

GLB POLLED PLUS 5003 (NC) ET
MHF XEROX X002
MHF U850

MHF R595
MHF Z111
MHF MATRON P408

E L CONQUISTADOR
MISS CJM Z011
MHF RENOVATION R575 (NC) E
MISS GOLDEN LINK 2530
BNL PURE CHROME 6901F
MHF M230 ET
MR GOLDEN LINK 6193ET
WORKMATRON L28

	EPD	CED	BW	WW	YW	Milk	TM	CEM
% Rank	14.9	0.0	48	63	22	46	3.1	80%
	10%	15%	55%	60%	5%	15%		

- C68 is a 94.7% female that has been a great producer for our program for the past few years, including the top selling bull in the 2020 Adding Value Sale, Mr RDF Cornerpost 1025. Daughter sells as LOT 29 (RDF 1416).
- Pasture exposed to BLU BLC JBB Deacon 452D (PB90240) (5-15-2024 to 8-19-2024).
- Updated pregnancy status available soon.



BLC VENTURA 001G

Purebred Spring Calving Bred Cow
PB96827 Calved 03/07/2019 Tattoo BLC 001G

HPS
Polled
Act. BW
83
WW/ratio
544/101
API Index
Rank
110.58
40%
% BU
92.2%

BLC VANGUARD 483Y
BLC VENTURE 317A
BLC RUTH 217X

VISTA BASIC BEEF ET
4Z MISS 1X PLD ET
4Z MISS N10 PD ET

VISTA 11L E530 P588
BLC MISS DBL EAGLE 483R
BLC TRU POLL RANGER 516T
BLC VELVET 216U
SILVER BULLET 5549
4Z CHLOE PLD ET
BONINA PHENOMENAL 9902 ET
WORKMATRON E112-60

	EPD	CED	BW	WW	YW	Milk	TM	CEM
% Rank	11.6	4.3	58	76	6	36	8.8	5%
	35%	85%	15%	25%	>95%	75%		

- Ventura is a homo polled female out of the 4Z Braunvieh herd that will fit right in any registered herd.
- Pasture exposed (6-15-2024 to 8-24-2024) to our Homo Polled RDF Polar Bear 1232K (PB105969).
- Pregnancy status will be updated soon.

**MHF C39**

Purebred Spring Calving Bred Cow
PB87257 Calved 05/18/2015 Tattoo MHF C39

HPS
Polled
Act. BW
84
WW/ratio
486/97
API Index
Rank
111.18
40%
% BU
86.7%

MHF XEROX X002

MHF Z73

MHF S698

GLB POLLED PLUS 5003 (NC) ET

MISS PREMIUM PLUS PFI P434

PFI POLLED BOBBIE F614

GLB POLLED PLUS 5003 (NC) E

MHF U850

MHF MMAGE M299

MHF L114

E L CONQUISTADOR

MISS CJM Z011

MR BBS D417 ET

MISS SAMIRAL OF PFI B236

	EPD	CED	BW	WW	YW	Milk	TM	CEM
% Rank	12.5	1.4	48	60	16	40	5.0	
	35%	35%	55%	70%	40%	50%	45%	

- C39 is a homo polled, traditional colored female that is a long spined feminine made daughter of the great Premium Plus cow that made such an impact on the Mystic Hill Program.
- Pasture exposed to Homo Black, Homo Polled BLU BLC JBB Deacon 452D (PB90240) (5-15-2024 to 8-19-2024).
- Updated pregnancy status available soon.

**MS RDF VERONICA 1418M**

Fullblood Spring Open Heifer
OB109824 Calved 03/16/2024 Tattoo RDF 1418

HPS
Horned
Act. BW
70
WW/ratio
MISS GOLDEN LINK 6228 ET
API Index
Rank
102.21
70%
% BU
100%

GLB "YAHOO" ET

MR GOLDEN LINK 8143 ET

MISS GOLDEN LINK 6228 ET

MR GOLDEN LINK 6193ET

MS RDF VERONICA 1061G ET

VERONICA DJF A577 ET

ELINO 8623-94 (8851 NAL)

TX OLIVIA 174

BAER 13758-60 SCHWARZENBERG

TX OLIVIA 174

SAMBO (NC) JORDI 8240-94

FORELLE 9708-5

ELINO 8623-94 (8851 NAL)

STARLINE VERONICA FLE 3H ET

	EPD	CED	BW	WW	YW	Milk	TM	CEM
% Rank	10.1	4.0	50	69	11	36	4.9	
	75%	85%	50%	45%	90%	80%	50%	

- Ms Veronica is a very well made, deep bodied, correct female with a great phenotype. She is stacked with some of the best fullblood genetics which included Yancy, Spittin Image, Elino, and Veronica. We have been using Yancy (GLB 8143) in our fullblood program and can't be happier with the results.

**MS RDF XENA 1416M**

Purebred Spring Open Heifer
PB109822 Calved 03/14/2024 Tattoo RDF 1476

HPS
Polled
Act. BW
68
WW/ratio
API Index
Rank
110.58
50%
% BU
94.3%

MHF T719

PJDC TEDDY BEAR

BCC MISS XENA

MHF XEROX X002

MHF C68

MHF Z111

MCB MR 5003 A518R

BODINE'S R39

4Z MR T201 PLD

MISS BCC JAZZY

GLB POLLED PLUS 5003 (NC) ET

MHF U850

MHF R595

MHF MATRON P408

	EPD	CED	BW	WW	YW	Milk	TM	CEM
% Rank	14.5	0.7	43	55	20	41	3.9	
	25%	30%	85%	85%	10%	40%	70%	

- Xena is a high percentage (94.3%) daughter of Lot 26 (C68) and Teddy Bear who has proven himself to make great females with nice udders. She is very feminine, clean fronted female with a great profile.



Lot 29- MS RDF XENA 1416M

**MS RDF YAZZY 1425M**

Fullblood Spring Open Heifer
OB109823 Calved 03/24/2024 Tattoo RDF 1425

HPS
Horned
Act. BW
68
WW/ratio
API Index
Rank
107.66
55%
% BU
100%

GLB "YAHOO" ET

MR GOLDEN LINK 8143 ET

MISS GOLDEN LINK 6228 ET

SWISS TRADITION IVAN

MS RDF JASMINE 1134H ET

WW FIELDSTONE JASMINE 229Z ET

ELINO 8623-94 (8851 NAL)

TX OLIVIA 174

BAER 13758-60 SCHWARZENBERG

TX OLIVIA 174

VERO'S VICTOR ET

BAER'S INGA ET

SWISS-WAY MARSHAL 53N

FIELDSTONE JASMINE ET

	EPD	CED	BW	WW	YW	Milk	TM	CEM
% Rank	10.8	4.5	55	74	14	41	6.0	
	60%	90%	25%	30%	65%	40%	30%	

- Here's another well-made deep bodied female with a great phenotype as well. Yazzy is also loaded with fullblood genetics that stand the test of time including Yancy, Yahoo, Swiss Tradition Ivan, Swiss Way Marshall, and Fieldstone Jasmine 2292, owned by Windy Valley Farm.

**MS RDF ADRIANNA 1429M**

Purebred Spring Open Heifer
PB109821 Calved 03/25/2024 Tattoo RDF 1429

HPS
Polled
Act. BW
83
WW/ratio
API Index
Rank
95.91
85%
% BU
92.8%

MHF UNDAUNTED U820 ET

BLU BLC JBB DEACON 452D ET

WW MY MARIA 454B

MARKUS (NC) ROLF 16004-36

QPG MISS ANNIE G001

QPG MISS ADRIAN D188

MHF RENOVATION R575 (NC) ET

MISS PREMIUM PLUS PFI P434

WW CORNERSTONE 921W ET

WW MS 843U

PASSGAL 5995-200 LEHN

BERNA 4990-294 OBERRIET

SSB MR RAYCO

MISS KKB R247

	EPD	CED	BW	WW	YW	Milk	TM	CEM
% Rank	11.1	3.4	45	51	4	26	2.2	
	60%	80%	75%	95%	>95%	>95%	95%	

- Adrianna is a dark hided, high percentage (92.8%) female. If you are looking for good quality, dark hided, high percentage females, look no further. We are calving out our 1st set of Deacon daughters, and they have really nice, refined udders, with small teats, what you like to see on 1st calf heifers. Dam sells as lot 25 (QPG 001).

JAY H FARMS
Chris, Nesha, and Jalyn Smith
P.O. Box 342, Rose Bud, AR 72137
(501) 626-3115 • Fax 501-556-4710

**Lots
33-34**



Lot 33 - MISS JMS AUDREY L372



Lot 34 - MISS JMS IRIS L371



MISS JMS AUDREY L372

Cert. Beef Builder Spring Calving Bred Heifer
BC107775 Calved 02/28/2023 Tattoo JMS L372

HPS
Polled
Act. BW
70
WW/ratio
API Index
Rank
128.64
15%
% BU
40.2%

MR RED ROOSTER 821F
MR PEACEMAKER 042H
WGLS 833

MR BLU BLACK LINE
MS BLU 017J
MS 334B

ROJAS RIOJA 6052
MS RED FIRE 562C
DUFF CAESAR
PIE STRAWBERRY 4159
WW BS MAIN LINE 200Z
BLU 21Y
DHR TEXAS RANGER
MISS BLU 334W

	EPD	CED	BW	WW	YW	Milk	TM	CEM
% Rank	15.6	-1.4	44	57	20	42	7.3	20%
	10%	10%	80%	80%	10%	35%		

- Check out this tremendous bred heifer. She tested negative for BLV, BVD, Johnes, and RTS measured 5. We have used this heifer's sire, Mr Peacemaker 042H, on many of our heifers and we have loved all of his calves including this one. She's good and going to have a dang good calf out of one of my favorite Angus bulls, AN20023479, AML Turning Point 024.
- Checked bred 40 days on 8/15/24 to AML Turning Point 024 (AN20023479), due to calve in April.



MISS JMS IRIS L371

Cert. Beef Builder Spring Calving Bred Heifer
BC107770 Calved 02/28/2023 Tattoo JMS L371

HPS
Polled
Act. BW
80
WW/ratio
API Index
Rank
150.08
2%
% BU
32.5%

GCC MONEY EARNED 852E ET
GCC MOTO MOTO 637G
GCC JUANADAS PENELOPE 633B

DSB BLACK STACKER 7524
MISS RH G912
A112

DAMERON FIRST CLASS
DUFF W 373 DIXIEERICA 8137
DCC NEW LOOK 101
GCC JUANADA PENELOPE 612X
DSB MR. JACK STACK 4904
DSB 5124
MR BAR ONE Y001

	EPD	CED	BW	WW	YW	Milk	TM	CEM
% Rank	14.4	2.5	71	100	16	50	8.2	15%
	25%	65%	2%	4%	40%	10%		

- I believe you can never go wrong with an awesome percentage bred heifer. This one tested negative for BLV, BVD and Johnes and RTS measured 5. She's out of one of my favorite cows and I believe this heifer will produce just like her.
- She's bred to my all-time favorite Angus bull we have been using on our heifers, AN20023479, AML Turning Point 024.
- Checked bred 45 days on 8/15/24, due to calve in April.

**See Video Links and the Supplement Sheet
with updated sale information at:
www.brinkbraunvieh.com**

Patrick Spring Cattle CO.



PSC MISS PINE 2315

Purebred Fall Open Heifer
PB108774 Calved 10/09/2023 Tattoo PSC 2316

HPS
Horned
Act. BW
83
WW/ratio
API Index
Rank
90.11
90%
% BU
99.7%

SHAKA BEUKES ET
WW SHAKA BUEKES 039H
FIELDSTONE JUBILEE ET

SILVERWOOD DRAGON 4Y
PSC MISS INDIA 1703
WDL'S DINAH CAROLINA

MEIKO 4608-944 HALDI
GLATTBRUGG FINKLI 92
MEDOR 5379-106 STEINERBERG
FIELDSTONE'S FINEST ET
KERHOLM ROBI NORMAN
STARLINE MISS JENNY 12U ET
MR RF 138T
HGC LILY 49U

	EPD	CED	BW	WW	YW	Milk	TM	CEM
% Rank	8.9	4.6	4.6	48	65	16	40	4.7
	85%	90%	90%	60%	55%	40%	50%	50%

- Medium framed, well rounded heifer

PATRICK SPRING CATTLE CO.

Dan Banasik
1268 W Farm Road 84, Springfield, MO 65803
(417) 838-7221

Lots
35-36



Lot 35 - PSC MISS PINE 2315



PSC MISS LAURA 2014

Purebred Spring Calving Bred Cow
PB100250 Calved 10/03/2020 Tattoo PSC 2014

HPS
Polled
Act. BW
77
WW/ratio
562/-
API Index
Rank
92.10
90%
% BU
97.7%

GLB SAMPSON 629 ET
MR. BOCEPHUS BOY
MS TLC ANNA F6496 ET

FF MR 126L
MISS SMOOTH PLUS KKB U204
MISS SMOOTH PLUS OF PFI M204

SAMBO (NC) JORDI 8240-94
ERLE 12832-34 WADENSWIL
NORTHSTAR VERNON AEB53A-6252
MISS W8R A97/1 ET
MR. FF E104 ET
MS FF G113 ET
GLB POLLED PLUS 5003 (NC) ET
MISS MATTIE OF PFI K024

	CED	BW	WW	YW	Milk	TM	CEM
EPD	8.5	3.7	50	66	17	42	3.0
% Rank	95%	85%	50%	50%	30%	35%	85%

- Nice full-bodied cow.
- AI'd to Mr. Golden Link 8143ET (Yancy; OB25992) on 6/3/2024. Pasture Exposed to AF Hickok 1322 (AAA 20671544) from 6/13/24-8/7/2024.
- Pregnancy status to be confirmed before sale.



Lot 36 - PSC MISS LAURA 2014

Middle Creek Braunvieh

Middle Creek Braunvieh
John Johnson
1449 Idaho Rd., Williamsburg, KS 66095
(785) 418-9550 • braunviehjohn@gmail.com

Lots
37-38



MIDDLE CREEK H1 H337 L06

Fullblood Fall Open Heifer
OB108847 Calved 05/02/2023 Tattoo JMCB L06

HPS
Horned
Act. BW
72
WW/ratio
460/-
API Index
Rank
82.60
>95%
% BU
100%

GLB SAM 627 ET
EMDEE'S SAM
MISS CHEYENNE U14

GLB 803
FLUEHLI-MARGA
EMDEE'S FLUEHLI-JURA ET

SAMBO (NC) JORDI 8240-94
ERLE 12832-34 WADENSWIL
MR GOLDEN LINK 8143 ET
SSB MISS MARY
RISS (NC) FABIAN 9937-11
MARGA 14223-21
RINGO 2771-716 FAELLANDEN
FLUEHLI Z-P-BRANDY ET B6636

	CED	BW	WW	YW	Milk	TM	CEM
EPD	7.8	4.2	47	61	16	40	3.4
% Rank	95%	90%	65%	70%	40%	50%	85%

- L06 is a bred coming 2yr old out of a Sam 627 son that I had.
- She is pasture exposed to WINV Shaka Khan L312 ET OB107003 from 07/01/2024 to 09/01/2024.



MIDDLE CREEK X09 460W Z07

Purebred Spring Calving Bred Cow
PB79953 Calved 08/06/2012 Tattoo JMCB Z07

HPS
Horned
Act. BW
74
WW/ratio
638/99
API Index
Rank
102.04
60%
% BU
95.7%

SSB MR RAY BOB
MR CHEYENNE X09
MISS CHEYENNE U02

RISS (NC) FABIAN 9937-11
BLC REECE 460W
MISS SPLIT DIAMOND L560

MR GOLDEN LINK 6193ET
M426
MR LLB N86
SAGE HILL KATIE
RISS 5901-41 FISCHENTHAL
FRANZISKA 7929-11 HIMWIL
GLB POLLED PLUS 5003 (NC) ET
GLB POLLED PLUS 5003 (NC) ET

	CED	BW	WW	YW	Milk	TM	CEM
EPD	12.5	2.4	43	54	18	39	7.4
% Rank	35%	50%	80%	85%	25%	55%	15%

- Z07 is a 12 year old cow that has put 12 progeny on the ground. She has a 346 day calving interval. This is one highly productive cow that has more good years ahead of her. Her dam is still in our herd at age 15 with 16 progeny on the ground.
- She is pasture exposed to WINV Shaka Khan L312 ET OB107003 from 7/01/2024 to 09/01/2024.

Big Blue Braunvieh

Big Blue Braunvieh
 Jason Zimmerman
 6370 W. Hackberry Rd., De Witt, NE 68341
 (402) 223-8367
 jasonzimmerman1994@gmail.com

Lot 39-41



BLC COURTNEY 408H

Purebred Spring Calving Bred Cow
 PB98965 Calved 03/14/2020 Tattoo BLC 408H

HPS
Polled
Act. BW
82
WW/ratio
530/100
API Index
Rank
117.95
30%
% BU
93.1%

DRR WIZARD OF OZ U570

BLC TORONTO 618D

SG OZ SLIPPER 918Y

PFI FLAGSTAFF Y127

BLC LOYALTY 409C

BLC CRYSTAL SYNERGI 408U

DRR OZ-MAN S144

MISS DRR ARIEL R730

BLC TRU POLL RANGER 516T

DRR OZ'S REINA U518

PFI NITE TIME R513

MISS GOLDEN LINK 2046

MHF SYNERGY S627

JMCB MISS LORETTA LYNN

	EPD	CED	BW	WW	YW	Milk	TM	CEM
% Rank	30%	13.1	2.1	58	80	10	39	5.2
		30%	55%	15%	15%	95%	60%	50%

- Pasture exposed to OCC Mr. Bojangles 152D from 5/1/24 - 7/31/24.



Lot 39 - BLC COURTNEY 408H



MISS BBB 2218

Purebred Fall Calving Cow & Heifer Calf
 PB105621 Calved 02/10/2022 Tattoo BBB K218

HPS
Polled
Act. BW
74
WW/ratio
478/91
API Index
Rank
116.34
35%
% BU
82.6%

OCC MR BOJANGLES 152D ET

OCC KELLIE 152X 52

DRR WIZARD OF OZ U570

MISS BBB C558

MISS BBB 904

MHF RENOVATION R575 (NC) ET

MISS PREMIUM PLUS PFI P434

MR GOLDEN LINK 8143 ET

MISS LLB N52

DRR OZ-MAN S144

MISS DRR ARIEL R730

MR RFI 5998

COMMERCIAL COW

	EPD	CED	BW	WW	YW	Milk	TM	CEM
% Rank	10%	15.6	1.4	50	64	8	33	6.6
		10%	40%	50%	60%	>95%	95%	20%

- Lot 40A:** Heifer calf sired by RCB J173 (PB103604), DOB: 9/13/24, weight 73 lbs.



MISS RCB C554

Purebred Fall Calving Cow & Calf
 PB89085 Calved 08/12/2015 Tattoo RCB C554

HPS
Polled
Act. BW
79
WW/ratio
478/91
API Index
Rank
130.90
10%
% BU
74.7%

JBB LONE RANGER 313A

JBB MS 8417W

MR RCB N323

MISS RB DIAMOND 608

MISS RB 608F PRIME

JBB RANGER'S BAD BOY 8422U AAA WOODRING'S RANGER 11R

JBB 291M

AAA WOODRING'S CASINO 20R ET

JBB 5455R

RCB L111 BLACK DIAMOND

MISS RCB FABIAN D440

MR CIRCLE G 235-B

ANGUS COW

	EPD	CED	BW	WW	YW	Milk	TM	CEM
% Rank	65%	9.6	1.7	44	60	10	32	3.1
		65%	40%	80%	70%	90%	90%	80%



OCC MR BOJANGLES 152D ET

Purebred Reference Sire
 PB90312 Calved 03/20/2016 Tattoo OCC 152D

HPS
Polled
Act. BW
81
WW/ratio
65%
API Index
Rank
105.80
65%
% BU
95.6%

MHF RENOVATION R575 (NC) ET

MHF UNDAUNTED U820 ET

MISS PREMIUM PLUS PFI P434

MR GOLDEN LINK 8143 ET

OCC KELLIE 152X 52

MISS LLB N52

MHF NEW ERA N315

MHF M230 ET

GLB POLLED PLUS 5003 (NC) ET

PFI POLLED BOBBIE F614

GLB "YAHOO" ET

MISS GOLDEN LINK 6228 ET

JF GAGE L103

MISS LLB H852 ET

	EPD	CED	BW	WW	YW	Milk	TM	CEM
% Rank	40%	13.3	2.9	60	79	6	36	1.8
		40%	85%	40%	60%	90%	75%	85%

- Sire of lot 40 & 41
- Service sire to lot 39



OCC MR BOJANGLES 152D ET

Andrew Jones
2550 Lawrence 1240, Ash Grove, MO 65604
(417) 459-6389 • ajones2203@yahoo.com

Lot 42



AWJB HAZEL 802L

Purebred Fall Open Heifer
PB107850 Calved 08/02/2023 Tattoo AWJB 802L

HPS
Polled
Act. BW
57
WW/ratio
548/108
API Index
Rank
120.26
25%
% BU
94.5%

BLC VENTURE 317A
BLC SCOUT 709H
BLC DOROTHY 609E

MHF XEROX X002
AAB JOANNE WOODWARD J185
EMDEE'S HANNAH

BLC VANGUARD 483Y
BLC RUTH 217X
DRR WIZARD OF OZ U570
BLC GILDA 409Z
GLB POLLED PLUS 5003 (NC) ET
MHF U850
GLB 803
MISS CHEYENNE U14

	CED	BW	WW	YW	Milk	TM	CEM
EPD	15.2	1.2	48	64	14	38	8.2
% Rank	15%	40%	60%	60%	65%	65%	15%

- Here's a really nice open heifer with good EPDs across the board. Good pedigree with MHF Xerox X002, BLC Venture 317A, Wizard of Oz, and Golden link 8143. Ready to go into your fall breeding program.



Lot 42 - AWJB HAZEL 802L

Lazy H
Stewart & Joleen Huneke
2478 County Rd. 00, Wilber, NE 68465
(402) 641-0254 • xdairyman03@gmail.com

Lots 43



BO'S MISS NADIA

Purebred Fall Calving Cow & Heifer Calf
PB96427 Calved 09/18/2018 Tattoo PJDC F-30

HPS
Act. BW
78
WW/ratio
API Index
Rank
108.35
45%
% BU
89.5%

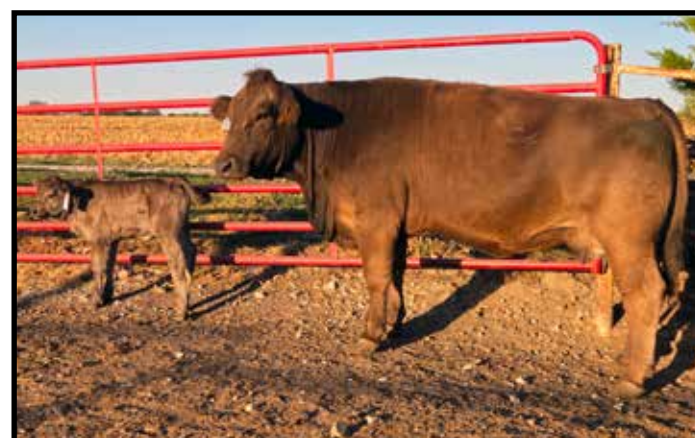
MHF UNDAUNTED U820 ET
OCC MR BOJANGLES 152D ET
OCC KELLIE 152X 52

JBB 64655
PJDC MISS ANNABELLE
BCC MISS LAURIE

MHF RENOVATION R575 (NC) ET
MISS PREMIUM PLUS PFI P434
MR GOLDEN LINK 8143 ET
MISS LLB N52
MR TLC BLACK TODD K2369 ET
MISS LSLC POLLED 264K
MHF T719
BCC MISS NOLA

	CED	BW	WW	YW	Milk	TM	CEM
EPD	14.6	1.7	45	60	8	31	4.9
% Rank	10%	40%	70%	70%	95%	95%	45%

- This quiet six year old Bojangles cow has consistently bred back to calve in the fall for the last four years. As one of the early Bojangles cows the genetics have been passed on to her offspring. She has had 2 bulls and 2 heifers. This cow/calf pair would be a compliment to anyone's herd.
- Lot 43A:** The heifer calf at her side is sired by Mr RCB H071 (PB100970) a black, polled bull. The calf's birth weight was 71 lbs.



Lot 43 & 43A - BO'S MISS NADIA & HEIFER CALF

Cedar Bluff Farm
Caleb & Kelsey Russell
20500 Redbud Rd., Jasper, MO 64755
(417) 793-6357 • cedarbluff_farm@yahoo.com

Lots
44-47

Cedar Bluff
44
MISS CBF K17/142C
Purebred Spring Calving Bred Cow
PB106168 Calved 09/12/2022 Tattoo CBF K17

HPS
Polled
Act. BW
70
WW/ratio
API Index
Rank
108.82
55%
% BU
93.6%

DRR WIZARD OF OZ U570 DRR OZ-MAN S144
BLC TORONTO 618D MISS DRR ARIEL R730
SG OZ SLIPPER 918Y BLC TRU POLL RANGER 516T
PFI FLAGSTAFF Y127 DRR OZ'S REINA U518
BLC LOYALTI 142C PFI NITE TIME R513
BLC JESSE'S GAL 042U MISS GOLDEN LINK 2046
AAA WOODRING'S POL JESSE 79K
BRG COW L042

EPD	CED	BW	WW	YW	Milk	TM	CEM
11.6	2.5	58	79	11	40	2.8	
% Rank	45%	65%	15%	20%	90%	50%	85%

- K17 is an easy doing, structurally correct PB female with a top 15% ww. Gold Standard is a calving ease sire that has produced some impressive females for us and others industry wide. We expect this mating to meet that standard.
- AI'd to GCC Gold Standard (X106165) on 6/8/2024 then pasture exposed to CBF Jax (PB102919) until 9/30/2024.
- Checked 3.5-4 months safe in calf by veterinarian on 9/30/2024.

Cedar Bluff
45
MISS CBF L04/D07
Cert. Beef Builder Spring Calving Bred Cow
BN108616 Calved 03/09/2023 Tattoo CBF L04

HPS
Polled
Act. BW
78
WW/ratio
550/111
API Index
Rank
121.49
25%
% BU
48.0%

KR CADILLAC RANCH

DRR WIZARD OF OZ U570 DRR OZ-MAN S144
CBF DOLLY D07 MISS DRR ARIEL R730
BLC JESSE'S GAL 042U AAA WOODRING'S POL JESSE 79K
BRG COW L042

EPD	CED	BW	WW	YW	Milk	TM	CEM
12.1	0.8	62	90	20	51	6.5	
% Rank	45%	30%	10%	10%	10%	5%	30%

- L04 is a big, growthy, structurally correct female sired by the Krebs Ranch Cadillac Ranch bull. Her EPDs chart in the top 10% of the breed for ww and yw, we'd look for this female to add growth and performance immediately. Taking into consideration the fact that she is out of a Wizard of Oz daughter on the bottom side, that should definitely make this female that much more intriguing.
- AI'd to GCC Gold Standard (X106165) on 6/8/2024 then pasture exposed to CBF Jax (PB102919) until 9/30/2024.
- Checked 2 months safe in calf by veterinarian on 9/30/2024.

Cedar Bluff
46
MISS CBF K15/G14
Purebred Spring Bred Calving Cow
PB106186 Calved 09/10/2022 Tattoo CBF K15

HPS
Polled
Act. BW
62
WW/ratio
API Index
Rank
117.43
30%
% BU
89.9%

N7R REDHAVEN 16B FR N7R BONAFIDE Z211
N7R POLARSTEEL II 57E DIA N HERSHEY 16X
N7R ARCTIC BERRY 57Z DIA N POLAR BEAR 922W
MISS GOLDEN LINK 2015
DRR WIZARD OF OZ U570 DRR OZ-MAN S144
CBF CREAM PI G14 MISS DRR ARIEL R730
CBF MISS AMERICAN PI C02 BLC PATRIOT 484A
CBF ICE PRINCESS W06

EPD	CED	BW	WW	YW	Milk	TM	CEM
15.7	0.4	44	54	14	36	7.2	
% Rank	10%	25%	80%	90%	65%	80%	20%

- K15 is a moderate, big bodied, structurally correct PB female with a CED in the top 10% of the breed. Being sired by the N7R Polarsteel bull, and out of a Wizard of Oz cow on the bottom side, we feel this female brings a high caliber mating and has the phenotypic appearance to match.
- AI'd to GCC Gold Standard (X106165) on 6/8/2024 then pasture exposed to CBF Jax (PB102919) until 9/30/2024.
- Checked 2.5 months safe in calf by veterinarian on 9/30/2024.

Cedar Bluff
47
MISS CBF L01/G23
Cert. Beef Builder Spring Calving Bred Cow
BN108613 Calved 03/02/2023 Tattoo CBF L01

HPS
Polled
Act. BW
78
WW/ratio
536/111
API Index
Rank
122.37
25%
% BU
44.7%

KR CADILLAC RANCH

DRR WIZARD OF OZ U570 DRR OZ-MAN S144
CBF GRETA G23 MISS DRR ARIEL R730
BODINE'S MS T60 DOUBLE J SUE R506 ET
MISS POL BLACK 92N

EPD	CED	BW	WW	YW	Milk	TM	CEM
12.0	1.0	62	89	18	49	7.7	
% Rank	45%	35%	10%	10%	20%	10%	15%

- L04 is a big, growthy, structurally correct female sired by the Krebs Ranch Cadillac Ranch bull. Her EPDs chart in the top 10% of the breed for ww and yw, we'd look for this female to add growth and performance immediately. Taking into consideration the fact that she is out of a Wizard of Oz daughter on the bottom side, that should definitely make this female that much more intriguing.
- AI'd to GCC Gold Standard (X106165) on 6/8/2024 then pasture exposed to CBF Jax (PB102919) until 9/30/2024.
- Checked 2 months safe in calf by veterinarian on 9/30/2024.



GCC Gold Standard - Bull used to AI lots 44-47



BLC DOROTHY 012E - Flush to bull of buyers choice



BLC DOROTHY 012E

Flush to Bull of Buyer's Choice
PB91934 Calved 03/20/2017 Tattoo BLC 012E

HPS
Polled
Act. BW
75
WW/ratio
458/89
API Index
Rank
121.19
20%
% BU
90.4%

DRR OZ-MAN S144
DRR WIZARD OF OZ U570
MISS DRR ARIEL R730

VISTA BASIC BEEF ET
BLC KATARINA 305X ET
JB KATARINA 011

MR GOLDEN LINK 8140 ET
MISS DOUBLE R RUBY 4145
PFI MATTS IMAGE N309
MISS DRR CLAUDIA 727
SILVER BULLET 5549
4Z CHLOE PLD ET
KASIMER
MARC SWISS FEMALE

	CED	BW	WW	YW	Milk	TM	CEM
EPD	16.2	1.8	55	78	8	36	11.7
% Rank	10%	40%	25%	20%	95%	75%	1%

- BLC DOROTHY 012E is a Wizard of Oz daughter and the dam of BLC AURORA SKY 012J who was a Grand Champion Heifer at 2023 Cattleman's Congress Open and Junior Show. 4 of her 5 mature calves are currently in production and this year's will certainly be around for years to come. 012E has been our #1 donor with several calves on the ground this year and more embryo's transferred for next year. Top 20th percentile for API, top 30th for TI, her numbers and productivity speak for themselves! Great feet, great udder, docile and fertile.
- Selling an IVF flush to the bull of the buyer's choice. Guarantee of 5 grade 1 embryos with up to 2 flushes. If 2 flushes do not result in 5 grade 1 embryos, seller will return a prorated percentage of the selling cost. If more than 5 embryos are produced, the additional ones also go to the buyer. Costs of the flush, semen, and shipping of the embryos are the responsibility of the buyer. Flush will take place at a Vytelle satellite of sellers choice. Flush has to be undertaken within 12 months of purchase. 012E calved in September and will be pasture exposed November 28.



WW MY CANDITA 378L was purchased by Elynn Zeigenbein at the **2023 Herd Builder Sale**.

WW MY CANDITA 378L received Champion Purebred/Fullblood Female at the 2024 Tulsa State Fair and Grand Champion Purebred Heifer at 2024 Ozark Empire.

Many great females have been consigned on this sale throughout the years. Don't miss the opportunity to add quality genetics to your herds!

The Source for Foundation Females

HERD BUILDER BRAUNVIEH FEMALE SALE

1 p.m.
Sat., Nov. 2, 2024
3 Cedars Event Center
Nevada, MO



4 SPIGOT MARKETING
Julie Hiesterman
1275 2nd Rd
Palmer, KS 66962

PRSR First Class
U.S. Postage
PAID
Boelte-Hall Inc.
66205

FIRST CLASS MAIL

