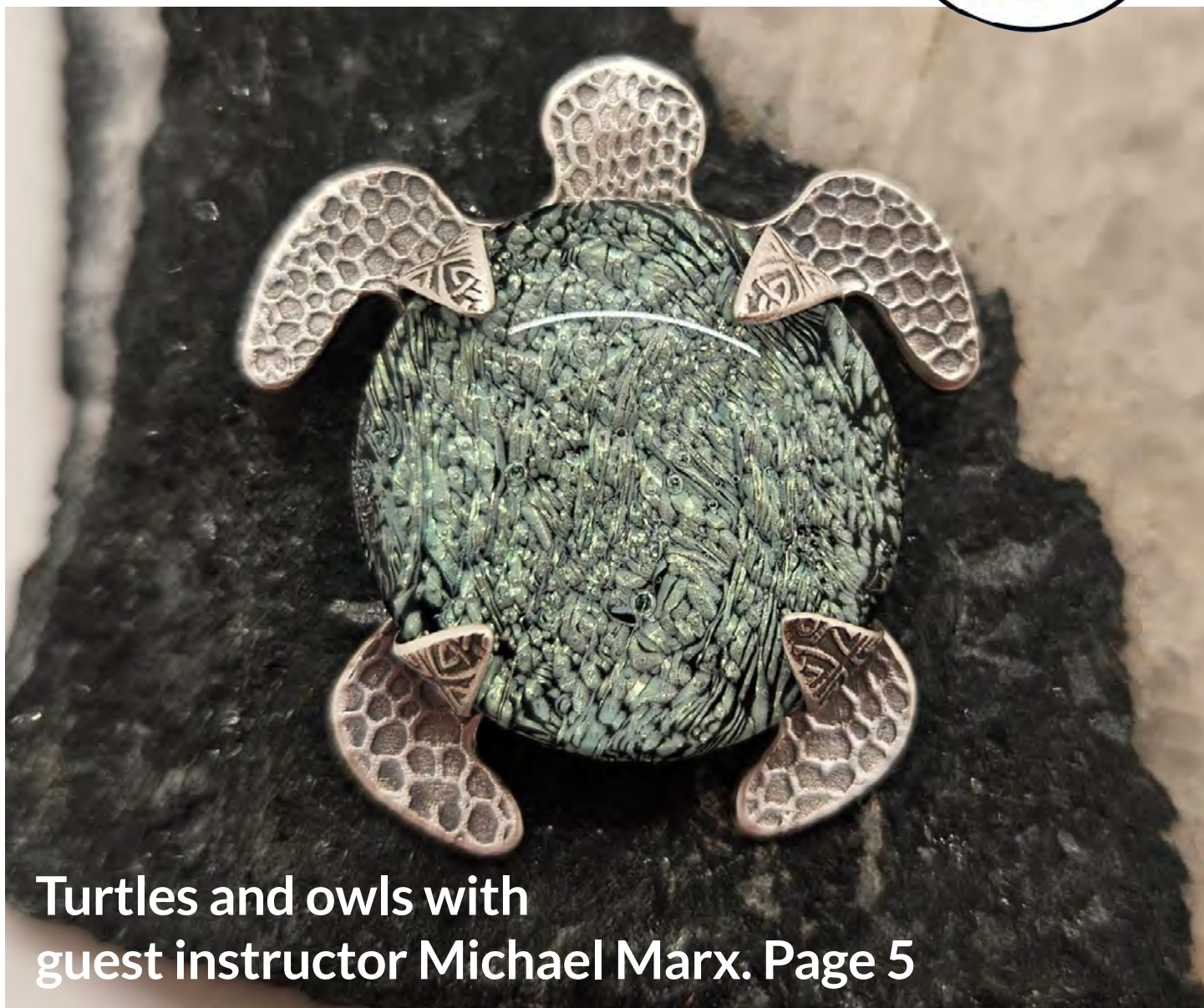


Happy 2026
THE
CORAL GEODE

January 2026



**Turtles and owls with
guest instructor Michael Marx. Page 5**

IN THIS ISSUE

- President's message, 2
- New members, 3
- Guest instructor, 4
- Metal clay, 5
- Table crafts, 8
- Lapidary, 9
- Faceting, 10
- Casting, 10
- Instructors, 7
- Scout visit, 11
- Metal, 12
- Bench Tips, 13
- Calendar, 14
- Board meeting minutes, 15

TBMSC COMMITTEES

The Coral Geode newsletter:

Lyra Solochek, editor/designer

Show:

Lyra Solochek (chair), Brenda Gregory, Cindy Britten, Linda Collins

Membership:

Christy Gorrow, director

Social media

and advertising:

Lyra Solochek, Miles Bhave, Brenda Gregory

Webmaster:

Miles Bhave, Lyra Solochek

Field trip:

Carlo Lucin, chair

Program coordinator:

Lyra Solochek, Cindy Britten

Sunshine:

Brenda Gregory

Education/youth:

Cindy Britten

Landscape: Brenda Gregory, Carlo Lucin

President's message

Happy New Year to you all. I hope you had a wonderful holiday season.

Your hard-working Board of Directors is planning some important changes for the coming year. The Communications Committee is upgrading our website in many ways to make it easier for all of us to use. While not yet ready, it will be coming online soon and you will be advised how to use it to your best advantage.

Our committee for reorganization and packing of our rocks and minerals are working hard to not only clean and pack but also to categorize and label the specimens. This will take more time than we had anticipated, but once finished will allow us to move the empty cabinets out, along with all the furniture in the main area of the club, in preparation for a new floor to be installed. We will also be acquiring 1-2 storage containers to assist in this endeavor and to provide us with much needed storage space long term.

There are several other projects which will be accomplished this year, including new exterior lighting and finishing the old shower stall and water temperature adjustments in the lapidary shop.

We have also increased the number of people who are willing and able to monitor both the Silver and the Lapidary shop for Open Shop days, alleviating the pressure on those who have been doing much of the monitoring.

I am very excited about our upcoming improvements. You will certainly notice some changes while we transition to an empty club at some point, which will be closed for as short a period as we can manage to empty, re-floor, and then refill the furniture and cabinets during this process.

Thank you in advance for your patience and support during our improvement process.



Ellen Sisco
President

Prepaid Shop Card still available

Buy one — or more — of the Prepaid Shop Cards (PSC) and use them as you visit the club for Open Shop. Write "PSC" under payment when you sign into Metal, Lapidary or Faceting Open Shops, then present your card to the monitor who will punch out the number of hours used.

The cards will come in three price points:

- 5 hours for \$30
- 10 hours for \$60
- 20+1 bonus for \$120.

These are approximately business card-size, easy to keep in your wallet. And there is no expiration date.

If you're interested, you can purchase them from club officers.

These prepaid cards are for only Metal, Faceting and Lapidary.

You can still pay for Open Shop by cash, PayPal or credit card if you prefer.



ABOUT OUR CLUB



Address:
10207 Fisher Ave.,
Tampa, FL 33619



Email:
info@tampabayrockclub.org



Phone:
(813) 684-2039



Website:
tampabayrockclub.org



Calendar

Don't forget to renew your membership

Please don't forget dues expired on December 31, 2025, so you need to renew to maintain your membership and access to classes and open shop time.

Check out all the new and wonderful classes we have scheduled and all the upgrades that are completed and still to come in the clubhouse. Surely, you want to be part of this amazing season of change and opportunity. So, this is a reminder that it's time to renew your membership. The cost has remained the same as last year: \$50 for this first adult and \$25 each for additional adults. Youth memberships are also still \$5.

A few people have taken advantage of a 4-year membership for \$180 with the second adult being an additional \$90. And, the best offer for your dollar is a Lifetime membership for \$600. You can renew online at our website: tampabay-rockclub.org

Or mail a check to
TBMSC, 10207 Fisher Ave.,

Tampa, FL 33619. Or stop by the clubhouse on a Saturday between 10 a.m. and 1 p.m. to have me process your membership in person. I can take cash, check or credit card.

Hope to see you soon,

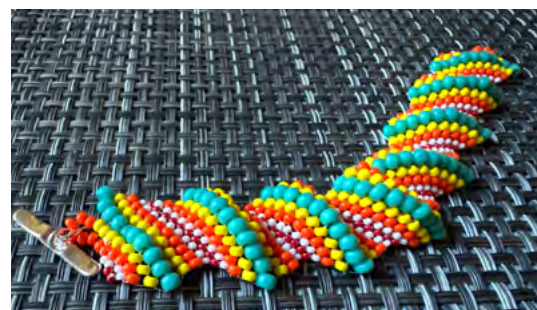
— Christy Gorrow, Membership



MEMBERS' SHOWCASE



Silver cuff bracelet with blue lace agate by Kathy Reid



Cellini spiral beaded bracelet by Lyra Solocheck

Last call for the T-shirt design contest

We need some new designs for our T-shirts, so we decided to ask our creative members to come up with some designs in a contest. The member with the best design wins a 1-year membership to the club.

Criteria:

- One color design. The shirts will likely be the usual blue.
- Includes the club logo.
- Includes one of these sayings approved by the membership last year.

Never take life for granite

Schist happens!

A finished design is preferred, but if you have a sketch of your idea, that will work as well.

Email your design entry to tbmscshow@gmail.com with the subject line of "T-shirt Contest." Submission deadline is **January 31, 2026.**



GUEST INSTRUCTOR

Chuck Bruce returns in February

Chuck Bruce from William Holland School of Lapidary Arts will be teaching three classes at the Tampa Bay Mineral and Science Club in February. See below for details:



February 19-20, 2026

Twisted Lapidary Workshop

This Class will focus on creating beyond cabochons. Students will be exposed to intarsia in a Zuni Sun Father Face. Students will acquire additional knowledge in the following:

- Doublets and triplets
- Stone cones
- Drilling into stones using diamond core bits
- Fit concave shaped stones with convex shaped stones
- Chip inlay into stones
- Make alternate cabs using dried natural items (butterfly or dragonfly wings etc. (using optical glues)
- Stabilization, custom tinting and a little hand carving

Fee includes projects for most techniques and will have extra kits for sale. Students will need to bring varied slabs of different hardness for projects.

Cost: \$484

**Click here
to sign up**



February 21, 2026

Sterling Inlay Ring Workshop

This one-day class is a ring fabrication workshop, fabricating and completing two sterling silver rings. These ring bands can be used for the Inlay Work Shop the following day.

Note: If you complete your ring bands early and are interested, you have the opportunity to purchase the chip Opals and learn the inlay process for your Sterling Silver bands.

Cost: \$ 332

**Click here
to sign up**



February 22, 2026

Opal Inlay Ring Workshop

In this class students will learn the process of inlaying synthetic opal chips in a stainless steel channel ring. After selecting your ring size, you will be given enough synthetic opals to complete a ring. Students will be taught glue and stone application, chip selection and insertion, then final grinding and polishing. Next, students will be taught to inlay real opal chips into stainless steel channel ring using same method. Everything needed to complete two rings will be provided. (2 Stainless Steel rings, 1 packet of synthetic opals and 1 packet of round opals to use in these channel rings)

Note: if you attended the Sterling Ring Class the previous day you could use those fabricated rings for this class.

Cost: \$ 332

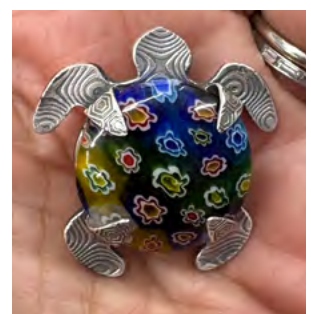
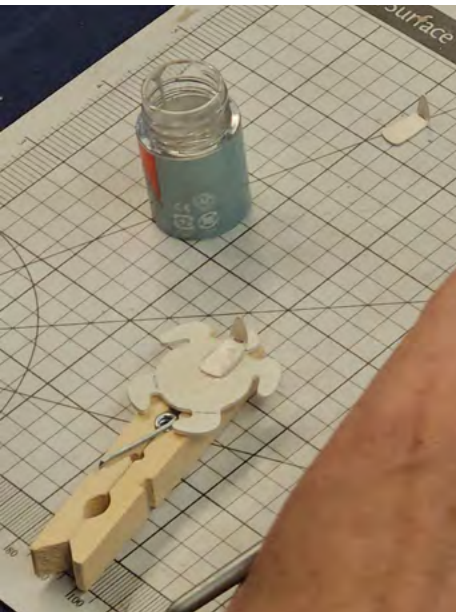
**Click here
to sign up**



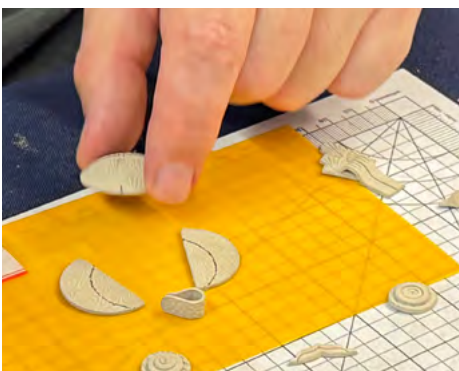
METAL CLAY

Two amazing classes with guest instructor Michael Marx

TURTLE WITH SET STONE

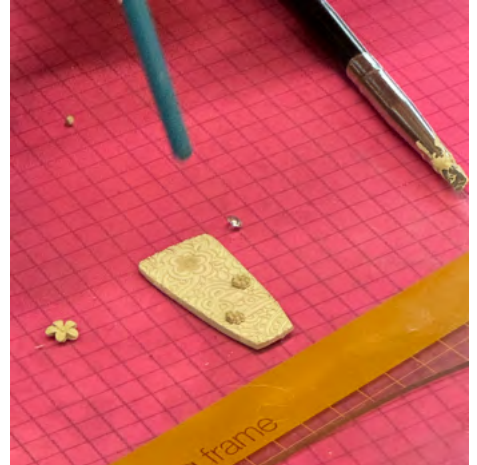


AWESOME OWLS



METAL CLAY

Intro to Metal Clay class in December





INSTRUCTOR LIST

Linda Collins

LCollins1953@gmail.com
Cold Connections, Wire Wrapping, Lapidary, Silver, Metal Shop foreman

Christy Gorrow

cgorrow@juno.com
Beading, Kumihimo, Viking Knit, Chaining and Intarsia

Jim Kammel

jmkammel@gmail.com
Faceting foreman and instructor

Mark Lauer

mdl3153@aol.com
Casting

Lisa Miller

meggymoo65@gmail.com
Silver

Lyra Solochek

lyrasolochek@gmail.com
Lapidary instructor, Metal Clay foreman and instructor

Jojo Torres

ceramics.johannatorres@gmail.com
Lapidary

Leah Welch

5324welch@gmail.com
Intarsia and Lapidary instructor and Interim Lapidary foreman

TABLE CRAFTS

Getting ready for contest entries

We continue to meet Wednesday afternoons from 1 to 4 p.m. and Wednesday evenings from 6 to 9 pm. Right now, everyone is busy working on items they want to finish so they can be entered at the [Strawberry Festival's Neighborhood Village Adult Contests](#) various categories. Most of our entries will be in the Jewelry Contest, but there are a variety of categories, in Jewelry alone there are the following possibilities: Glassworks, Stringing, Beading, Kumihimo, Chains from Rings, Weaving, PMC, Wire Wrapping, Silversmith, Miscellaneous.

I'm hoping to enter a Kumihimo bracelet, a loom woven bracelet and peyote stitch bracelet. In addition, there are other categories that several of us hope to enter, such as Christmas ornaments in Home Decor and a twisty thing in the toy category. Everything must have been completed after the 2025 Strawberry Festival ended. In other words, no old pieces, even if they're lovely. Entry date is from noon to 6 p.m. on February 17.



We have recently purchased a Miyuki Delica Bead chart for table crafts to use. When making a project, most people purchase a pattern on the internet. The pattern will have a list of colors the designer used. Many times, you have a variety of beads in your stash but not the ones the designer used. With this color chart, we can compare what we already own to the project colors and if we need to purchase additional bead frequently when shopping online the colors are not totally accurate to what they are in real life. We're all so excited to have this amazing tool for us to use. I've included some pictures. As you can see it came in two sections and seven pages. If you look closely, you can see that there are beads sewn to these cards showing the actual colors. I am so thrilled and want to thank the board for approving the purchase.

— Christy Gorrow



LAPIDARY



Beginning Cabochon class

- 10 a.m.-2:30 p.m. Feb. 17, 18, 24, 25
- 10 a.m.-2:30 p.m. March 3, 4, 10, 11
- 9 a.m.-5:30 p.m. March 21-22
- 9 a.m.-5:30 p.m. April 18-19

This workshop covers the basics of turning slabs of rocks into polished pieces. The cost of the class is \$230, which includes materials, instructor fees and shop time. A deposit of \$130 is required to save a spot, and the balance of \$100 should be paid to the instructor the day of the class. You must wear closed-toed shoes. No loose clothing, and long hair must be tied back. Bring a waterproof apron, an Optivisor/magnifier, a large towel and lunch.

**Click here
to sign up**



Lapidary Open Shop Reservations

Members who completed the Beginning Cabochon class may use equipment in the Lapidary Shop during Open Shop. You must present your shop pass to the monitor when you sign in. If you do not have a card, ask the monitor or shop foreman for one. If you have previous cabbing experience, but did not take the Beginning Cabochon class, talk to the shop foreman for a Skills Check to get your shop pass. You must be a current member to use club facilities. Cost is \$6 per hour. PayPal, credit card, Prepaid Shop Card or exact change only. Please pay the shop monitor or club staff before you leave.

**Click here
to sign up**



Signing up, cleaning up and stepping up

If you have completed the Beginning Cabochon class, and would like to use the club's equipment during Open Shop, please make sure you sign up to reserve a spot. This will help us ensure we have a monitor present to open the shop and to oversee members who are using the equipment. No monitor, no open shop.

Also, please make sure you check the class calendar. If there is a class, there is no open shop.



I unfortunately had to cancel this month's weekend Beginner Cabochon and next month's Hearts cab classes. So that means Open Shop is available this Saturday, January 17. Leah Welch's weekday classes are still taking place as scheduled.

The next weekend Beginner Cabochon class is March 21-22.



Please make sure all the machines you used are cleaned thoroughly at the end of the Open Shop session. This includes trim saws and polishing wheels. Use nail brushes to clean the wheel surfaces (go from high grit to low), clean the wheel well with a toothbrush, and sponge out the excess water. Run water in the trough to get as much residue out of the shop. Remove stone bits and oil from the trim saws. Mop up the floor if it's wet.

Let's keep the Lapidary shop in top shape so we may continue to enjoy using it.



We will have more members trained to use the lapidary slab saws, so, hopefully, we will be able to cut rough more quickly.

If you have a rock you'd like cut into slabs, please submit an order form.



If you have cabbing experience and would be interested in joining our monitor rotation, please contact the foreman for more details.

I will be out for a few weeks, but Leah Welch has agreed to step up as interim Lapidary Foreman. Thanks Leah!

— Lyra Solochek

FACETING

Beginning Faceting

9 a.m.-3 p.m. Feb. 7-8 **ONLY 1 SEAT LEFT**

This is a two-day class on cutting faceted gemstones (transparent stones similar in appearance to diamonds). You will learn how to choose cutting material, dop the stone, cut and polish facets, transfer a stone, and proper operation and care of a faceting machine. Each student will complete one stone.

Cost is \$230 total, which includes materials, instructor fee, club shop time and use of machines. A deposit of \$130 is required to reserve a seat.

The balance of \$100 should be paid directly to the instructor on the first day of class.

Each student should have his/her own Optivisor to closely examine the stone during the cutting process. These are available on Amazon or Harbor Freight. You must wear closed-toed shoes. No loose clothing, and long hair must be tied back.



**Click here
to sign up**



CASTING



Intro to wax carving and silver centrifuge casting

February 14-15 (FULL)

This two-day class begins on the morning of Day 1 with an introduction to wax carving, where you'll create a freeform ring. In the afternoon, you'll learn how to set up a plaster of Paris mold. This mold will be placed in the kiln at the end of the day for burnout overnight.

**Click here
to sign up**



On Day 2, you'll cast your ring in sterling silver and explore various methods to finish and polish your piece. Previous experience in silver classes is strongly recommended.

The fee for the class is \$230, which includes all materials, instructor fee, and shop time. A deposit of \$130 is required to reserve your spot, with the remaining \$100 payable to the instructor on the day of the class. For more information, contact instructor Mark Lauer at mdl3153@aol.com.

Cub Scout adventure at the club



This month, Cub Scout Pack 413 from Clearwater had an exciting adventure at TBMSC as they worked on their “Earth Rocks” adventure. During the outing, the Scouts learned about and demonstrated the formation of the three main types of rocks—igneous, sedimentary, and metamorphic—using layers of different colors of play dough. They practiced identifying various samples using hands-on observation. They put their new skills to the test with the Mohs Hardness Test to determine mineral hardness, and the highlight of the day was breaking open a geode to reveal the sparkling crystals hidden inside. It was a fun and educational experience that truly rocked!

—Cindy Britten



METAL SHOP

Silversmithing 1.1: Introduction to Silversmithing

- 9 a.m. to 2 p.m. Jan. 17 (Full)
- 9 a.m. to 2 p.m. Feb. 28 (Full)

The first class of the Fundamentals of Silversmithing Course is a five-hour class where the student will create a textured sterling silver ring band. The

**Click here
to sign up**



basics of metalsmithing will be covered, including shop etiquette and safety, how to use jewelry tools, soldering, finishing. Cost: \$95* Materials and the use of tools are included in the cost. (*Materials cost is subject to change based on market prices.) Deposit of \$33 on Signup Genius required to reserve a seat. Pay the balance of \$62 to the instructor. Students must bring own Optivisor. Closed-toed shoes required. No loose clothing; long hair must be

tied back. Contact instructor Lisa Miller at meggymoo65@gmail.com or 772-631-1405 for more information about the Fundamentals of Silversmithing Course.



Silversmithing 1.2: Split-shank ring

9 a.m.-1 p.m. Jan. 24 and 31 **TWO SEATS LEFT!**

In the second class of the Fundamentals of Silversmithing Course, the student will make a split-shank ring with a stone in it. This class consists of two four-hour classes.

**Click here
to sign up**



Cost: \$150* Materials and the use of tools are included in the cost. (*Materials cost is subject to change based on market prices.) Deposit of \$52 on Signup Genius required to save a seat.

Prerequisite: Must have completed Silver 1.1.

Students must bring own Optivisor. Closed-toe shoes required. No loose clothing; long hair must be tied back. Contact instructor Lisa Miller at meggymoo65@gmail.com or 772-631-1405 for more information about the Fundamentals of Silversmithing Course.



Silversmithing 1.3 class: Pendant

In the third and final class of the Fundamentals of Silversmithing Course, the student will create a sterling silver pendant featuring a round or oval cabochon. This class consists of two four-hour classes.

- 9 a.m.-1 p.m. March 14 and June 21

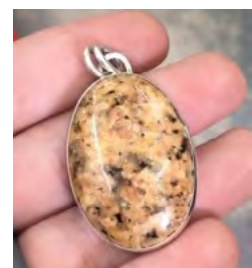
Cost: \$155* Materials and the use of tools are included in the cost. (*Materials cost is subject to change based on market prices.)

Deposit of \$52 on Signup Genius required to save a seat.

Prerequisite: Must have completed Silver 1.1 and 1.2.

Students must bring own Optivisor. Closed-toed shoes required.

**Click here
to sign up**



Contact instructor Lisa Miller at meggymoo65@gmail.com or 772-631-1405 for more information about the Fundamentals of Silversmithing Course.

Brad's Bench Tips

By Bradford Smith



Templates

Whenever I have to make more than 2-3 exact copies of a sheet metal component, I think of making a template. Templates let me easily draw the shape of an item to cut out.

Art stores or online sources like cooltools.us and kingsleynorth.com sell templates for common shapes like circles, ovals, hearts, etc. but for nonstandard shapes, I make my own out of a scrap of sheet plastic or sheet metal. My preference is brass. I carefully lay out the shape using a steel ruler, a set of dividers, a scribe, and a fine center punch.

One example is the brass template in the pic below that lets me quickly trace the design of ginkgo leaf earrings onto a silver sheet. Another is the nickel template which makes it easy to drill a pattern of holes for pin inlay into wooden handles.

"24 Easy Metal Textures" - With No Rolling Mill Required

It details 24 different techniques for adding texture to your jewelry and metal work without the need for heavy equipment like a mill. The techniques make use of more tools and materials around the shop — like hammers, stamps, punches and tool bits for the Dremel or Foredom.

Each technique is explained in detail with:

- Description and pictures of the technique
- Procedures for creating the texture
- List of tools and supplies needed
- Options for modifying and personalizing

These methods are both useful and practical. I use them in my own work, and I teach them to others in classes and workshops. What's more is they're practical. None should put a dent in your budget.

Copies are available now at <https://amazon.com/dp/BOBPGPTBNH/>



Smart Solutions for Your Jewelry Making Problems

Click to see all of Brad's books on amazon.com/author/bradfordsmith



CALENDAR



vecteezy.com

GENERAL CLUB HOURS

Tuesday: 4-8 p.m.

Thursday: By appointment

Saturday: 9 a.m.-1 p.m.

CLASSES, OPEN SHOP AND EVENTS

Tuesday, January 13, 2026

10 a.m.- 2:30 p.m. BEGINNING CABOCHON, Day 1
4 p.m. - 8 p.m. Lapidary Open Shop
4 p.m. - 8 p.m. Metal Open Shop

Wednesday, January 14, 2026

10 a.m.- 2:30 p.m. BEGINNING CABOCHON, Day 2
1 p.m. - 4 p.m. TABLE CRAFTS
6 p.m. - 9 p.m. TABLE CRAFTS

Saturday, January 17, 2026

8 a.m.- 3 p.m. FACETING, DAY 1
9 a.m.- 5:30 p.m. CASTING, Day 1
9 a.m.- 2 p.m. SILVER 1.1
9 a.m.- 1 p.m. Lapidary Open Shop

Sunday January 18, 2026

8 a.m.- 3 p.m. FACETING, Day 2
9 a.m.- 5:30 p.m. CASTING, Day 2

Tuesday, January 20, 2026

10 a.m.- 2:30 p.m. BEGINNING CABOCHON, Day 3
4 p.m. - 8 p.m. Lapidary Open Shop
4 p.m. - 8 p.m. Metal Open Shop

Wednesday, January 21, 2026

10 a.m.- 2:30 p.m. BEGINNING CABOCHON, Day 4
1 p.m. - 4 p.m. TABLE CRAFTS
6 p.m. - 9 p.m. TABLE CRAFTS

Saturday, January 24, 2026

9 a.m.- 1 p.m. Lapidary Open Shop
9 a.m.- 1 p.m. SILVER 1.2, Day 1

Tuesday, January 27, 2026

4 p.m. - 8 p.m. Lapidary Open Shop
4 p.m. - 8 p.m. Metal Open Shop

Wednesday, January 28, 2026

1 p.m. - 4 p.m. TABLE CRAFTS
6 p.m. - 9 p.m. TABLE CRAFTS

Saturday, January 31, 2026

9 a.m.- 1 p.m. Lapidary Open Shop
9 a.m.- 1 p.m. SILVER 1.2, Day 2

Monday, February 2, 2026

6:30 p.m. - 8:30 p.m. TBMSC Board Meeting

Tuesday, February 3, 2026

4 p.m. - 8 p.m. Lapidary Open Shop
4 p.m. - 8 p.m. Metal Open Shop

Wednesday, February 4, 2026

1 p.m. - 4 p.m. TABLE CRAFTS
6 p.m. - 9 p.m. TABLE CRAFTS

Saturday, February 7, 2026

8 a.m.- 3 p.m. FACETING, DAY 1
9 a.m.- 1 p.m. Lapidary Open Shop
9 a.m.- 1 p.m. Metal Open Shop

Sunday February 8, 2026

8 a.m.- 3 p.m. FACETING, Day 2

Tuesday, February 10, 2026

4 p.m. - 8 p.m. Lapidary Open Shop
4 p.m. - 8 p.m. Metal Open Shop

Wednesday, February 11, 2026

1 p.m. - 4 p.m. TABLE CRAFTS
6 p.m. - 9 p.m. TABLE CRAFTS

Saturday, February 14, 2026

9 a.m.- 5:30 p.m. CASTING, Day 1
9 a.m.- 1 p.m. Lapidary Open Shop

Sunday February 15, 2026

9 a.m.- 5:30 p.m. CASTING, Day 2

Tuesday, February 17, 2026

4 p.m. - 8 p.m. Lapidary Open Shop
4 p.m. - 8 p.m. Metal Open Shop

Wednesday, February 18, 2026

1 p.m. - 4 p.m. TABLE CRAFTS
6 p.m. - 9 p.m. TABLE CRAFTS

Thursday, February 19, 2026

9 a.m.- 5:30 p.m. CHUCK BRUCE: ZUNI MASKS, Day 1

Friday, February 20, 2026

9 a.m.- 5 p.m. CHUCK BRUCE: ZUNI MASKS, Day 2

Saturday, February 21, 2026

9 p.m. - 5 p.m. CHUCK BRUCE: SILVER INLAY RING

Sunday February 22, 2026

9 p.m. - 5 p.m. CHUCK BRUCE: OPAL INLAY

Tuesday, February 24, 2026

4 p.m. - 8 p.m. Lapidary Open Shop
4 p.m. - 8 p.m. Metal Open Shop

Wednesday, February 25, 2026

1 p.m. - 4 p.m. TABLE CRAFTS
6 p.m. - 9 p.m. TABLE CRAFTS

Saturday, February 28, 2026

9 a.m.- 1 p.m. Lapidary Open Shop
9 a.m.- 2 p.m. SILVER 1.1

Mon March 2, 2026

6:30 p.m. - 8:30 p.m. TBMSC Board Meeting

Tuesday, March 3, 2026

4 p.m. - 8 p.m. Lapidary Open Shop
4 p.m. - 8 p.m. Metal Open Shop

Wednesday, March 4, 2026

1 p.m. - 4 p.m. TABLE CRAFTS
6 p.m. - 9 p.m. TABLE CRAFTS

Saturday, March 7, 2026

QUARTERLY MEMBERS' MEETING
No open shops

Tuesday, March 10, 2026

4 p.m. - 8 p.m. Lapidary Open Shop
4 p.m. - 8 p.m. Metal Open Shop

Wednesday, March 11, 2026

1 p.m. - 4 p.m. TABLE CRAFTS
6 p.m. - 9 p.m. TABLE CRAFTS

Saturday, March 14, 2026

9 a.m.- 1 p.m. Lapidary Open Shop
9 a.m.- 1 p.m. SILVER 1.3, Day 1

Tuesday, March 17, 2026

4 p.m. - 8 p.m. Lapidary Open Shop
4 p.m. - 8 p.m. Metal Open Shop

Wednesday, March 18, 2026

1 p.m. - 4 p.m. TABLE CRAFTS
6 p.m. - 9 p.m. TABLE CRAFTS

Saturday, March 21, 2026

9 a.m.- 5:30 p.m. BEGINNING CABOCHON, Day 1
9 a.m.- 1 p.m. SILVER 1.3, Day 2

Sunday March 22, 2026

9 a.m.- 5:30 p.m. BEGINNING CABOCHON, Day 2

Tuesday, March 24, 2026

4 p.m. - 8 p.m. Lapidary Open Shop
4 p.m. - 8 p.m. Metal Open Shop

Wednesday, March 25, 2026

1 p.m. - 4 p.m. TABLE CRAFTS
6 p.m. - 9 p.m. TABLE CRAFTS

TBMSC Board Meeting Minutes

January 5, 2026

Present: Lyra Solochek, Linda Collins, Cindy Britten, Brenda Gregory, Miles Behave, Carlo Lucin, Christy Gorrow.

Via Phone: Kathy Reid

Call to Order - by Ellen Sisco at 6:34PM

New Board Members and Officers — Linda Collins, Cindy Britten, Brenda Gregory, Christy Gorrow and Kathy Reid — sworn in for the new 2-year term by Ellen Sisco.

Motion to approve November meeting minutes made by Linda Collins. Seconded by Brenda Gregory. Approved by all.

Treasurer's Report by Linda Collins

- Several large expenditures are coming up in the next month or two (Fairgrounds/flooring)
- Christmas Raffle went well.
- Motion to approve treasurer report made by Cindy Britten. Seconded by Lyra Solochek. Approved by all.

Old Business

- Construction update: Ellen Sisco. Floor prep is still planned.
- Still looking at options for storage container/shed for items being inventoried. May be getting a shed donated.

Department Updates

- Suggestion to have a set schedule for shop monitors.
- Lapidary – Lyra Solochek. This month's class and 'Hearts' class are cancelled
- Silver – Linda Collins. Class at end of month — Lisa Miller will be doing classes 1.1 & 1.2 in January.
- Faceting – Lyra Solochek. New grinding laps have been added.
- Casting - Lyra Solochek. Class will run concurrently with Silver Class next this month. Will need to share bench/bench pins and some tools.
- Table Crafts – Christy Gorrow and Linda Collins. Linda will hold a make-and-take class — wire wrapped bracelet — in February (maybe a weekend). Christy Gorrow plans to do Viking Knit & Kumihimo classes on the weekend in addition to Wednesday sessions.
- Metal Clay – Lyra Solochek. Michael Marx class is happening this weekend. Intro class last month was fun and successful. Lyra considering going to William Holland later this year for next level metal clay certification.
- Guest instructor — Linda Collins. Chuck Bruce on February 19-22 for three classes.

New Business

- Spring show update — Lyra Solochek. Friday, April 3 and Saturday, April 4; set up is on the April 2. Vendors sent RSVP — many are positively responding. Contract signed with fairgrounds. Club will no longer pay fairgrounds for parking; attendees will pay for their own parking. First deposit to fairgrounds due in January. Contracts will move to online portal. Linda Collins and Cindy Britten will be trained to use new website platform. Late vendor payments will be charged a late fee for booth reservations not paid on time. Aiming to increase vendor count.
- SOP and by-laws need updating.
- Considering switching newsletter to blogs and emails from the new portal. Contributors may post online.
- Distribution, training of tasks and responsibilities – ie. Class Scheduling. Newsletters.
- Contact list being will be transferred to new platform.
- Addition of member Robert Campbell as mineral identification instructor.
- Motion to adjourn made by Linda Collins. Seconded by Cindy Britten. Approved by all. Meeting adjourned at 8:09 p.m.
- Next board meeting February 2, 2026. Next members' meeting March 7, 2026.

2025 December Treasurer's Report			
		CHECKING	SAVINGS
Beginning Balance:		\$ 41,993.90	\$ 47,131.99
Ending Balance:		\$ 53,415.55	\$ 47,133.19
Income/Expenses:		\$ (11,421.65)	\$ 1.20
Income: Paypal, Sign-up Genius, Weekly Club Income, Mmbrshp Renewal			
	Sign-up Genius	\$ 1,323.50	
	Paypal Transfer	\$ 11,107.78	
	Deposit	\$ 3,046.00	
		\$ 15,477.28	
Clubhouse Expenses - October 2025			
		\$ 4,055.63	
	<i>Buildings/Grounds Expenses:</i>		\$ 1,555.62
	T-Mobile Co. Phone		\$ 124.35
	Teco-Nov/Dec		\$ 373.42
	Company Utilities		\$ 35.36
	Daniel Burd - Lawn Care(2 mths)		\$ 800.00
	ADT Security		\$ 222.49
	<i>Operational Expenses:</i>		\$ 1,464.95
	Auto Owners Insurance		-
	Manatee Insurance		-
	Philadelphia Indemnity-Accident		-
	Lyra Solochek - Geode(nov-dec)		\$ 300.00
	Lyra Solochek - misc sys		\$ 6.45
	OBHAUS - Plant City - Miles		\$ 120.00
	Amazon - Marketplace		\$ 14.58
	Amazon - Marketplace		\$ 75.10
	Cash/tailgate, co x-mas		\$500.00
	Publix - Co. Functions		\$ 102.09
	Go Daddy		\$ 78.96
	Google Wrkspace		\$ 9.99
	Sign up genius-refund Silver(not eligible)		\$ 107.89
	Insta Ink		\$ 8.59
	Staples - Office Supplies		\$ 127.88
	Lowes		\$ 13.42

Continued on next page

Continued from previous page

		Trade Show Expenses:				\$ 300.00
		Miner Shop -Reimbursement-2025				\$ 300.00
		Silver Shop Expenses:				\$ 153.68
		Amazon Mktple -Calipers				153.68

ELECTED OFFICERS AND BOARD MEMBERS

Officers

Ellen Sisco, President**
 Lyra Solochech, Vice President**
 Linda Collins, Treasurer*
 Cindy Britten, Secretary*

Board Members

Christy Gorrow*
 Brenda Gregory*
 Carlo Lucin**
 Kathy Reid*
 Patti Kepple**
 Milind Bhavé**

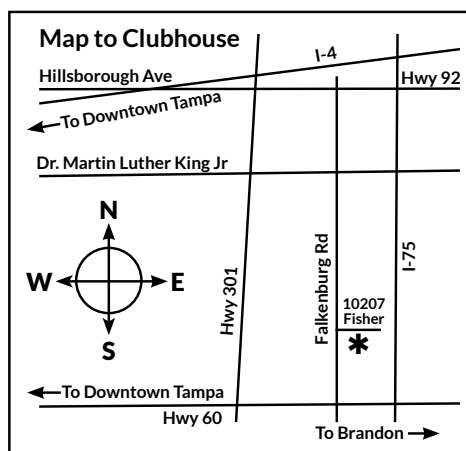
*Term expires in 2027
 **Term expires in 2026



Tampa Bay Mineral and Science Club, Inc. Membership Application

*Mandatory fields

Adult 1 Name*	Email*	Birth month
Adult 2 Name*	Email*	Birth month
Child (under 18)		Birth month
Child (under 18)		Birth month
Child (under 18)		Birth month
Address		
City	State	ZIP
		Phone*
Preferred form of contact*		Are you willing to receive your monthly newsletter by Email?
<input type="checkbox"/> Email <input type="checkbox"/> Text <input type="checkbox"/> Phone		<input type="checkbox"/> Yes <input type="checkbox"/> No
I hereby apply for membership for myself and others listed above, and agree not to hold any claims against the club.*		Referred by:
Signature		Date



Annual dues (January 1-December 31): \$50 individual, \$25 for each additional adult in the household, and \$5 for each child under 18.
Multi-year membership: \$180 individual for 4 years, \$90 per additional adult in household for 4 years
Lifetime membership: \$600 individual, \$300 per additional adult in household.

Make checks payable to "TBMSC" and mail with this application to 10207 Fisher Avenue, Tampa, FL 33619, or drop it off at the club house when you visit.

Clubhouse: 10207 Fisher Avenue, Tampa, FL 33619

Phone: (813) 684-2039

Website: www.tampabayrockclub.org

Regular membership meetings: 1st Saturday of Mar., June, Sept. and Dec.

Board meetings: 1st Monday of each month, 6:30 p.m.

Monthly Newsletter: The Coral Geode

The Tampa Bay Mineral and Science Club is a non-profit organization for the charitable and educational purposes of associating persons who are interested in natural science to work together as an organization in the gathering, displaying, and studying of rocks, shells, jewelry arts, and any kind of scientific objects of interest to the individual and the organization and to promote community interest in these subjects.

For Club Use

Cash or Check #	Amount	Receipt Done	Cards Done	Added to Mbr List	
-----------------	--------	--------------	------------	-------------------	--