

THE CORAL GEODE

JULY 2025



Peyote stitching. What is it?

Page 5

IN THIS ISSUE

President's Message, 2
Members' Showcase, 3
New members, 3
Metal Clay, 4
Table crafts, 5
Metal Shop, 6
Faceting, 8
Lapidary, 9
Bench Tips, 11
Calendar, 12
Board meeting minutes, 13

Peyote bracelet by Christy Gorrow

TBMSC COMMITTEES

The Coral Geode newsletter:

Lyra Solochek, editor/designer

Show:

Greig Lundergan, Brenda
Gregory, Lyra Solochek

Membership:

Christy Gorrow, director

Social media

and advertising:

Lyra Solochek, Miles Bhavé

Webmaster:

Lyra Solochek

Field trip:

Carlo Lucin, chair

Program coordinator:

Lyra Solochek

Sunshine:

Brenda Gregory

Education/outreach: Open

Building/grounds: Open

Election Nomination:

TBA in August

President's message

I hope you all had a nice Fourth of July holiday.

Members of your Board of Directors had a very productive meeting in June to develop ideas to improve our Club and to prioritize our goals. We discussed the physical plant extensively, but also some new ideas were presented to bring in our members as well as non-members to become more involved.

For example, we are hoping to have some geology experts help us with identifying and labeling the specimens in our display cases.

I will be consulting with a contractor this week as to some of the work we need to have done in the building and hope to have a progress report soon.

Our casting shed is in the process of finalization with much of the equipment we need already present. More work is required, however, and some devices are backordered. Classes will be announced shortly after a successful trial run.

Progress continues.



Ellen Sisco
President

ELECTED OFFICERS AND BOARD MEMBERS

Officers

Ellen Sisco, President**

Lyra Solochek, Vice President**

Linda Collins, Treasurer*

Cindy Britten, Secretary*

*Term expires in 2025

**Term expires in 2026

Board Members

Christy Gorrow*

Greig Lundergan**

Brenda Gregory*

Carlo Lucin**

Kathy Reid*

Patti Kepple**

Milind Bhavé**

ABOUT OUR CLUB



Address:

10207 Fisher Ave.,
Tampa, FL 33619



Email:

info@tampabayrockclub.
org



Phone:

(813) 684-2039



Website:

tampabayrockclub.org



Calendar

SAVE THE DATES!



66TH ANNUAL FALL GEM, MINERAL, & JEWELRY SHOW

NOV. 1-2, 2025

**Florida State Fairgrounds,
Tampa, Florida**

Members' showcase

Let's celebrate your successes in the Members' Showcase! Send us a photo of your finished work, along with your name and some details about your piece to geodeeditor@gmail.com with subject line of "Showcase."

Work by Lisa Miller



Work by Jojo Torres



Work by Christy Gorrow



New members!

Eric & Lorena Lizotte
Brian Floyd
Matthew Stellon
Jill & Danny Conrad
Matthew Bingham
Diane DiPietro
Jeanne Farnsley
Thomas Field
Justin Murphy
Jim Carcano
Randy Solt
Kenneth Stokes
Yildiz Dural
Sheryl McKesson
Joe & Debra Sheire
Jonathon Pernas
Marisol Marin
Ewa Mickiewicz
Briana Frank
Eric Gilliland
Jacob Roodvoets
Paul Farr
Stacey Gillespie
Dean Warner

METAL CLAY

Guest instructor Michael J. Marx returns

Start making your plans! Metal Clay artist and instructor Michael Marx is coming back to TBMSC for two classes in January 2026 to share with us some of his signature styles in metal clay. The classes are:

January 9: "Turtle With Stone" — a three-dimensional turtle using about 15 grams of silver clay with minimal tools, props and textures, with a cold-set stone. (You supply the stone. Cabs will also be for sale at class.) This class is suitable for new and intermediate clay artists.

Cost: \$345 total.

- \$134 deposit to reserve seat on Signup Genius.
- \$211 Instructor fee and materials (includes 15g of clay) due the day of class.

**Click here
to sign up**



January 10-11: "Awesome Owls" — a three-dimensional owl using 30-plus grams of silver clay with layered textures, coil work and multiple embellishments. This class is catered toward intermediate to advanced skill levels and require a full tool kit, textures and some props.

Cost: \$655 total.

- \$249 deposit to reserve a seat on Signup Genius
- \$406 Instructor fee and materials (includes 30g of clay) due the day of class

**Click here
to sign up**



Minimum of seven students required for each class. Up to 15 maximum. If additional clay is required, the cost will be additional.

Morning snacks and lunch are provided.

Please make sure your memberships are current. Non-members may purchase a weekend pass for \$30.

For more information, contact Lyra Solochek at lyrasolochek@gmail.com



INSTRUCTOR LIST

Linda Collins

LCollins1953@gmail.com
Cold Connections, Wire Wrapping, Lapidary, Silver, Metal Shop foreman

Christy Gorrow

cgorrow@juno.com
Beading, Kumihimo, Viking Knit, Chaining and Intarsia

Jim Kammel

jmkammel@gmail.com
Faceting foreman and instructor

Mark Lauer

mdl3153@aol.com
Casting

Lisa Miller

meggymoo65@gmail.com
Silver

Lyra Solochek

lyrasolochek@gmail.com
Lapidary foreman and instructor, Metal Clay foreman and instructor

Jojo Torres

ceramics.johannatorres@gmail.com
Lapidary

Leah Welch

5324welch@gmail.com
Intarsia and Lapidary

TABLE CRAFTS

What is Peyote Stitch?

Peyote stitch is a basic bead weaving technique used to create beaded pieces without a loom (off-loom beadweaving). The name “peyote” comes from early Native American rituals. An early form of the stitch was used to create beaded objects for use in religious ceremonies that included the use of the peyote cactus. Although modern peyote stitch is different from the techniques used by early Native Americans and African artists, the name has remained. The original peyote stitch used by Native Americans is what is now known as the gourd stitch.

This stitch allows the beader to create a beaded fabric without a loom or visible thread. By zig-zagging the thread through offset rows of beads, any size or shape can be created. The offset alignment achieved with peyote stitches give texture and interest to beaded jewelry and accessories. Learning the peyote stitch is usually easier than it looks. It's a great style to use for bracelets, necklaces and small bags or amulets.

All that said, think of a brick wall (first image), now turn it on it's side and this is what even-count peyote stitch looks like (second image). The bricks in each column are off-set from the previous column, but the piece is worked horizontally. By taking a chart like this and putting in colors you can create wonderful patterns usually for bracelets (third image).

Once you get the hang of it, it's easy, but it does take time.

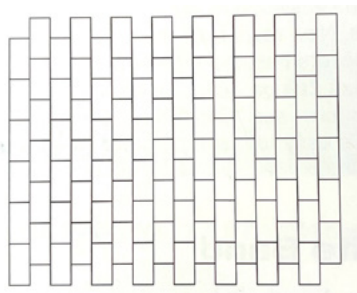
— Christy Gorrow



By Christy Gorrow



By Christy Gorrow



Day or night, classes are going strong

Table crafts is continuing to meet on Wednesdays from 10 a.m. to 1 p.m. We are mostly doing peyote stitch projects, but have plans to learn to bead on a loom. The club has two looms. If you are interested in loom beading but do not have a loom you could borrow one of ours. Contact me — Christy Gorrow — via text at 813-857-4454 or email cgorrow@juno.com.

Wednesday evenings we've started up a “Learn Peyote Stitch.” The first class was July 9 from 6 pm to 10 pm. Cost is \$3.50 an hour or 3 hours for \$10, plus the cost of supplies. There will be a \$3 charge for materials at the first class unless you have your own supplies. We'll be starting out with large beads to learn or refresh the peyote process. Then we will switch to 11/0 Delicas to make either a starter strip for other projects or a simple even-count strip to cover a carrier bead that can become a pendant. This class includes reading a pattern both in picture and word form. The evening should end with a decision if you'd like to continue and make something created with Peyote Stitch. I'll have some patterns to choose from as well as resources for patterns and materials. Have 5 students so far, but can accommodate 1 or 2 more. Contact me at the number to email above.

There is a possibility of starting another peyote group, either during the day or a different evening, depending on the interest level. Send inquiries to the above number or address.

— Christy Gorrow

METAL SHOP

Silver Pendants

Students in Silver 1.3 worked on silver pendants with a bezel-set stone. This class completes the Fundamentals of Silver series, giving graduates access to the club's Open Shop.



METAL SHOP

Silversmithing 1.1: Introduction to Silversmithing

- 9 a.m. to 2 p.m. July 12



The first class of the Fundamentals of Silversmithing Course is a five-hour class where the student will create a textured sterling silver ring band. The basics of metalsmithing will be covered, including shop etiquette and safety, how to use jewelry tools, soldering, finishing. Cost: \$78*

**Click here
to sign up**



Materials and the use of tools are included in the cost. (*Materials cost is subject to change based on market prices.) Deposit of \$33 on Signup Genius required to reserve a seat. Pay the balance of \$45 to the instructor. Students must bring own Optivisor. Closed-toed shoes required. No loose clothing; long hair must be tied back. Contact instructor Lisa Miller at meggymoo65@gmail.com or 772-631-1405 for more information about the Fundamentals of Silversmithing Course.

Metal Open Shop Reservations

Members who completed the Beginning Silver course may use the Metal Shop during Open Shop hours. You must present your shop pass to the monitor when you sign in. If you do not have a card, ask the monitor or shop foreman for one. If you have previous smithing experience, but did not take the Beginning class, talk to the shop foreman for a Skills Check to get your shop pass. You must be a current member. Cost is \$6 per hour. **PayPal, credit card or exact change only.**

**Click here
to sign up**



Silversmithing 1.2 class: Split-shank ring with a stone



- 9 a.m.-1 p.m. July 26 and Aug. 9, 2025

In the second class of the Fundamentals of Silversmithing Course, the student will make a split-shank ring with a stone in it. This class consists of two four-hour classes.

Cost: \$141* Materials and the use of tools are included in the cost. (*Materials cost is subject to change based on market prices.) Deposit of \$52 on Signup Genius required to save a seat.

Prerequisite: Must have completed Silver 1.1.

Students must bring own Optivisor. Closed-toe shoes required. No loose clothing; long hair must be tied back. Contact instructor Lisa Miller at meggymoo65@gmail.com or 772-631-1405 for more information about the Fundamentals of Silversmithing Course. Students must bring own Optivisor. Closed-toed shoes required.

**Click here
to sign up**

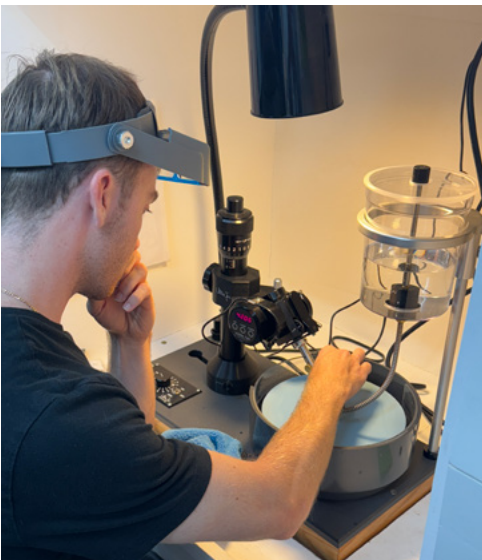


FACETING



SPARKLING RESULTS

Three new faceters started to learn the art of cutting and polishing gemstones during the Beginning Faceting class in June.



You, too, can learn to facet a beautiful gemstone

NEW: We're adding a weekday class in August!

Beginning Faceting

- 9 a.m.-3 p.m. July 28-29, 2025
- 8 a.m.-3 p.m. Aug. 9-10, 2025
- 8 a.m.-3 p.m. Aug. 19-20, 2025 **WEEKDAY!**

This is a two-day class on cutting faceted gemstones (transparent stones similar in appearance to diamonds). You will learn how to choose cutting material, dop the stone, cut and polish facets, transfer a stone, and proper operation and care of a faceting machine. Each student will complete one stone.



Click here to sign up

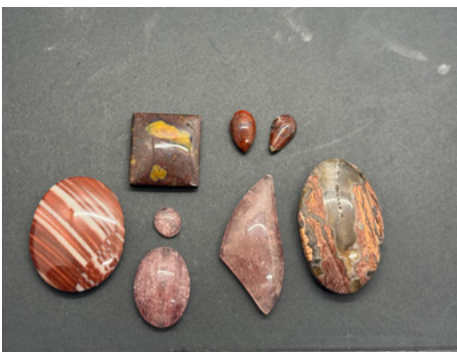


Cost is \$230 total, which includes materials, instructor fee, club shop time and use of machines. A deposit of \$130 is required to reserve a seat. The balance of \$100 should be paid directly to the instructor on the first day of class. Each student should have his/her own Optivisor to closely examine the stone during the cutting process. These are available on Amazon or Harbor Freight. You must wear closed-toed shoes. No loose clothing and long hair must be tied back.

LAPIDARY

Beginning a journey in lapidary arts

Students learned the basic steps on how to create cabochons from stone slabs in the June class.



LAPIDARY

Beginning Cabochon class

- 9 a.m.-5:30 p.m. July 12-13 (full)
- **NEW** 10 a.m.-6:30 p.m. Aug. 23-24
- 9 a.m.-5:30 p.m. Sept. 13-14
- 9 a.m.-5:30 p.m. Oct. 18-19
- 9 a.m.-5:30 p.m. Nov. 15-16

**Click here
to sign up**



This is a two-day workshop covering the basics of turning slabs of rocks into polished pieces. The cost of the class is \$230, which includes materials, instructor fees and shop time. A deposit of \$130 is required to save a spot, and the balance of \$100 should be paid to the instructor the day of the class.

You must wear closed-toed shoes. No loose clothing and long hair must be tied back. Bring a waterproof apron, an Optivisor, a large towel and lunch.

Lapidary Open Shop Reservations

Members who completed the Beginning Cabochon class may use equipment in the Lapidary Shop during Open Shop. You must present your shop pass to the monitor when you sign in. If you do not have a card, ask the monitor or shop foreman for one. If you have previous cabbing experience, but did not take the Beginning Cabochon class, talk to the shop foreman for a Skills Check to get your shop pass. You must be a current member to use club facilities. Cost is \$6 per hour. **PayPal, credit card or exact change only.**

**Click here
to sign up**



Brad's Bench Tips

By Bradford Smith

DRILLING SMALL ITEMS

Small pieces need to be held securely while drilling to prevent them from spinning if the drill catches. Having sliced my fingers occasionally in my younger days, I avoid Band-Aids now by using flat-jaw pliers or a ring clamp. Pliers also save you if the piece gets hot. Put a little tape over plier jaws if needed to avoid scratches.



"24 Easy Metal Textures" - With No Rolling Mill Required

It details 24 different techniques for adding texture to your jewelry and metal work without the need for heavy equipment like a mill. The techniques make use of more tools and materials around the shop — like hammers, stamps, punches and tool bits for the Dremel or Foredom.

Each technique is explained in detail with:

- Description and pictures of the technique
- Procedures for creating the texture
- List of tools and supplies needed
- Options for modifying and personalizing

These methods are both useful and practical. I use them in my own work, and I teach them to others in classes and workshops. What's more is they're practical. None should put a dent in your budget.

Copies are available now at <https://amazon.com/dp/B0BPGPTBNH/>



Smart Solutions for Your Jewelry Making Problems

Click to see all of Brad's books on amazon.com/author/bradfordsmith

CALENDAR

REMINDER
No Open Shop in
Lapidary or Metal
Shop on July 12.



GENERAL CLUB HOURS

Tuesday: 4-8 p.m.

Thursday: By appointment

Saturday: 9 a.m.-1 p.m.

CLASSES, OPEN SHOP AND EVENTS

Saturday, July 12, 2025

9 a.m. - 5:30p.m. BEGINNING
CABOCHON, Day 1, no Open Shop
9 a.m. - 2p.m. SILVER 1.1, no Open
Shop

Sunday, July 13, 2025

9 a.m. - 5:30p.m. BEGINNING
CABOCHON, Day 2

Tuesday, July 15, 2025

4p.m. - 8p.m. Lapidary Open Shop
4p.m. - 8p.m. Metal Open Shop

Wednesday, July 16, 2025

10 a.m. - 1p.m. TABLE CRAFTS
6p.m. - 9p.m. TABLE CRAFTS

Saturday, July 19, 2025

9 a.m. - 1p.m. Lapidary Open Shop
9 a.m. - 1p.m. Metal Open Shop

Tuesday, July 22, 2025

4p.m. - 8p.m. Lapidary Open Shop
4p.m. - 8p.m. Metal Open Shop

Wednesday, July 23, 2025

10 a.m. - 1p.m. TABLE CRAFTS
6p.m. - 9p.m. TABLE CRAFTS

Saturday, July 26, 2025

9 a.m. - 3p.m. FACETING, DAY 1
9 a.m. - 1p.m. SILVER 1.2, Day 1, no
Open Shop

Sunday, July 27, 2025

9 a.m. - 3p.m. FACETING, Day 2

Tuesday, July 29, 2025

4p.m. - 8p.m. Lapidary Open Shop
4p.m. - 8p.m. Metal Open Shop

Wednesday, July 30, 2025

10 a.m. - 1p.m. TABLE CRAFTS
6p.m. - 9p.m. TABLE CRAFTS

Saturday, August 2, 2025

9 a.m. - 1p.m. Lapidary Open Shop
9 a.m. - 1p.m. Metal Open Shop

Monday, August 4, 2025

6:30p.m. - 8:30p.m. TBMSC Board
Meeting

Tuesday, August 5, 2025

4p.m. - 8p.m. Lapidary Open Shop
4p.m. - 8p.m. Metal Open Shop

Saturday, August 9, 2025

8 a.m. - 3p.m. FACETING, DAY 1
9 a.m. - 1p.m. Lapidary Open Shop
9 a.m. - 1p.m. SILVER 1.2, Day 2, no
Open Shop

Sunday, August 10, 2025

8 a.m. - 3p.m. FACETING, Day 2

Tuesday, August 12, 2025

4p.m. - 8p.m. Lapidary Open Shop
4p.m. - 8p.m. Metal Open Shop

Saturday, August 16, 2025

9 a.m. - 1p.m. Lapidary Open Shop
9 a.m. - 1p.m. Metal Open Shop

Tuesday, August 19, 2025

8 a.m. - 3p.m. FACETING, DAY 1
4p.m. - 8p.m. Lapidary Open Shop
4p.m. - 8p.m. Metal Open Shop

Wednesday, August 20, 2025

8 a.m. - 3p.m. FACETING, Day 2

Saturday, August 23, 2025

9 a.m. - 5:30p.m. BEGINNING
CABOCHON, Day 1, no Open Shop
9 a.m. - 1p.m. Metal Open Shop

Sunday, August 24, 2025

9 a.m. - 5:30p.m. BEGINNING
CABOCHON, Day 2

Tuesday, August 26, 2025

4p.m. - 8p.m. Lapidary Open Shop
4p.m. - 8p.m. Metal Open Shop

Saturday, August 30, 2025

**CLUB CLOSED FOR THE LABOR
DAY HOLIDAY WEEKEND**

Tuesday, September 2, 2025

4p.m. - 8p.m. Lapidary Open Shop
4p.m. - 8p.m. Metal Open Shop

Saturday, September 6, 2025

9 a.m. - 10 a.m. Tailgate
11:30 a.m. - 12:30p.m. Presentation
12p.m. - 1p.m. Members Meeting

Monday, September 8, 2025

6:30p.m. - 8:30p.m. TBMSC Board
Meeting

TBMSC Board Meeting Minutes

July 7, 2025

Members Present: Ellen Sisco, Lyra Solochech, Carlo Lucin, Cindy Britten, Brenda Gregory, Greig Lundgren, and Christy Gorrow.

Members Via Phone: Kathy Reid, Miles Bhave and Linda Collins

Call to order at 6:33 p.m. by Ellen Sisco

June minutes. Motion to approve made by Brenda Gregory. Seconded by Cindy Britten. Approved by all.

Treasurer report—Linda Collins reported.

- Report format changed to reflect individual department's spending.
- ADT bill was higher than usual – Ellen will call Bank and ADT to investigate.
- Insurance up to date.
- Is there a need for a year-to-date budget report per department?
- Next Fairgrounds payment due August 15.
- Approval of June treasurer report: Motion made by Cindy Britten, seconded by Lyra Solochech. Approved by all.
- Linda will move monies into Money Market account after checking into rates. Amount approved by Board in February 2024 was \$10,000.

Old Business

- Ratify “no” vote on invitation to Gemorama Show in October. We will be preparing for TBMSC Fall Show at that time.
- Front door lock fixed.
- Hart Gems Merger: Ellen Sisco spoke with Russell Hart; they are still trying to find a venue that can expand over time.

Department Reports

- Casting – Lyra Solochech reported: Waiting on supplies. Ventilation for shed (Kitchen vent will do) coming soon.
- Lapidary – Lyra Solochech reported: Class this weekend is full. Equipment repair being completed.
- No open shop this weekend because of class. Maybe investigate offering weekday classes.
- Metal – Linda Collins reported: Class attendance high. Future classes filling quickly. Earlier time for open shops starting in fall.
- Table Crafts – Christy Garrow reported: Wednesday daytime class still well attended. Wednesday night class starting this week. Possibility for weekend classes in future. Discussed possibility of classes for juniors (ages 10 up; with parents).
- Metal Clay – Lyra reported. Michael Marks – still firming up prices. Class dates are January 9-11.
- Faceting – Jim Kammel adding weekday classes in August

New Business

- Incoming Estate Donation: Carlo and Lyra will visit Friday to pick up.
- Discussed using MEET UP (app) for advertising events and club activities
- Membership: Christy Gorrow– concerns with payment notifications not reaching her. Linda Collins will forward PayPal reports to help with situation.

Summary of Board Retreat

- Discussion priorities for projects. Suggestion was made to categorize and prioritize the list of projects.

Continued on next page

Continued from previous page

- Getting prices of new shed. Ellen will get addition quotes.
- Projects. Miles Bhave talked with a contractor. Will send business card to Ellen Sisco. Brenda Gregory will check with her Fairgrounds contacts for a list of possible contractors for floor.
- Cindy Britten reported on assisting a Scout troop from Pinellas County: The troop leader asked for assistance with the troops Earth Rocks Adventure. Planning for a Saturday in September. More info to follow.
- Display Cabinets – Brenda Gregory reported on ones built for fairgrounds, getting more information on sources.
- Brenda and Cindy volunteered to update the displays – label/categorize/clean. Seeking help from a geologist to assist with rock identification.
- Brenda presented an example of pre-paid card for Shop Time.
- Discussed having a Day Pass.

Meeting adjourned at 8:30 p.m.

Motion made by Cindy Britten. Seconded by Lyra Solochech. Approved by all.

Next Board meeting August 4, 2025 at 6:30 p.m.



Rockhounding resources

Here are some websites that offer great information about rockhounding in Florida.

[Florida Rockhounding Location Guide & Map](#)

[How To Find Rocks rockhounding guide in Florida](#)

[Obtaining fossil permits in Florida](#)

[Gator Girl Rocks: America's Best Rockhounding Resource](#)

Additionally, the [Tampa Bay Fossil Club](#) hosts fossil-hunting field trips. Go to their website for more information.

2025 June Treasurer's Report

	CHECKING	SAVINGS
Beginning Balance:	\$ 38,068.20	\$ 47,124.91
Ending Balance:	\$ 36,551.61	\$ 47,126.07
Income/Expenses:	<u><u>\$ 1,516.59</u></u>	<u><u>\$ 1.16</u></u> Interest Income

Income: Paypal, Sign-up Genius, Weekly Club Income, Mmbrshp Renewal

Sign-up Genius	\$ 492.00
Paypal Transfer	\$ 1,116.92
Deposits	\$ 441.00
Re-Deposits from Tailgate	\$ 300.00
Deposits	\$ 393.00
Deposit -Nov Show	\$ 2,100.00
Deposit -Nov Show	\$ 1,500.00
Deposit	\$ 32.00
	<u><u>\$ 6,374.92</u></u>

Clubhouse Expenses - June 2025

Buildings/Grounds Expenses: \$ 1,750.34

ADT Security	\$ 623.55
T-Mobile Co. Phone	\$ 124.17
Teco	\$ 252.27
Manatee Insurance Company	\$ 723.60
Company Utilities	\$ 26.75
Burd Lawn Services LLC(Pd in July)	

Casting Expenses: \$ 98.00

Pye-Barker Fire	\$ 98.00
-----------------	----------

Lapidary Expenses: \$ 350.56

Home Depot - Tampa	\$ 58.31
Home Depot - Tampa	\$ 96.45
SP HP Lapidary	\$ 104.94
Lowe's	\$ 28.54
Amazon Workplace	\$ 62.32

Advertising Expenses: \$ 169.56

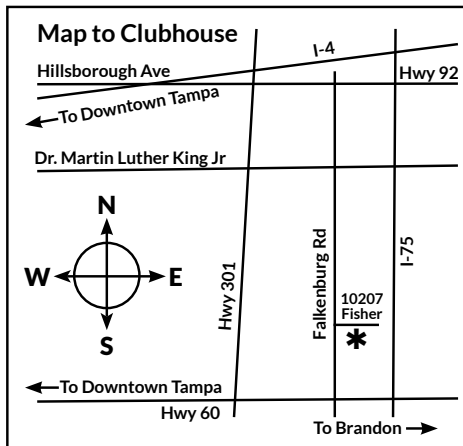
Facebook	\$ 9.57
Google Workshop	\$ 9.99
Lyra Solocheck - June Geode	\$ 150.00

Tampa Bay Mineral and Science Club, Inc.

Membership Application

*Mandatory fields

Adult 1 Name*		Email*		Birth month	
Adult 2 Name*		Email*		Birth month	
Child (under 18)				Birth month	
Child (under 18)				Birth month	
Child (under 18)				Birth month	
Address					
City		State	ZIP		Phone*
Preferred form of contact*				Are you willing to receive your monthly newsletter by Email?	
<input type="checkbox"/> Email <input type="checkbox"/> Text <input type="checkbox"/> Phone				<input type="checkbox"/> Yes <input type="checkbox"/> No	
I hereby apply for membership for myself and others listed above, and agree not to hold any claims against the club.*				Referred by:	
Signature			Date		



Annual dues (January 1-December 31): \$50 individual, \$25 for each additional adult in the household, and \$5 for each child under 18.
Multi-year membership: \$180 individual for 4 years, \$90 per additional adult in household for 4 years
Lifetime membership: \$600 individual, \$300 per additional adult in household.

Make checks payable to "TBMSC" and mail with this application to 10207 Fisher Avenue, Tampa, FL 33619, or drop it off at the club house when you visit.

Clubhouse: 10207 Fisher Avenue, Tampa, FL 33619

Phone: (813) 684-2039

Website: www.tampabayrockclub.org

Regular membership meetings: 1st Saturday of Mar., June, Sept. and Dec.

Board meetings: 1st Monday of each month, 6:30 p.m.

Monthly Newsletter: The Coral Geode

The Tampa Bay Mineral and Science Club is a non-profit organization for the charitable and educational purposes of associating persons who are interested in natural science to work together as an organization in the gathering, displaying, and studying of rocks, shells, jewelry arts, and any kind of scientific objects of interest to the individual and the organization and to promote community interest in these subjects.

For Club Use

Cash or Check #	Amount	Receipt Done	Cards Done	Added to Mbr List	
-----------------	--------	--------------	------------	-------------------	--

Revised 1/2025