

CORAL GEODE

A Publication of the Tampa Bay Mineral & Science Club

MAY

HOT ROCKS, COOL GEMS & FABULOUS JEWELRY

2021

IN THIS ISSUE:

<i>Metal Clay Class</i>	2
<i>Beading Class</i>	2
<i>New Gem Tree Workshop</i>	2
<i>Lapidary Corner</i>	3
<i>Metal Shop News</i>	4
<i>Florida State Fair</i>	5
<i>April Board Minutes</i>	6
<i>Brad's Bench Tips</i>	7

ABOUT OUR CLUB

10207 Fisher Avenue, Tampa, FL 33619

Email: info@tampabayrockclub.org

Mailing Address: PO Box 89146
Tampa, FL 33689

Phone: (813) 684-2039
Tampabayrockclub.org



VISIT OUR WEBSITE

TAMPABAYROCKCLUB.ORG

PRESIDENT'S MESSAGE

Gerri Lundergan

April saw the clubhouse buzzing with classes. Beading started back up, Silver 1 and Lapidary are back on Tuesday nights, as well as Wax Carving and Faceting. In June we have Barbara Rivolta starting PMC classes on Thursdays. See her bio & class info in this issue of the Geode. She is a Certified Clay Instructor and a Camp PMC Certified Instructor.

We finished up sharing the benefits of being part of the club at the Florida State Fair on Sunday. It is always a great time meeting new folks and chatting about classes. As always, we appreciate our volunteers who come to spend time in the club booth and talk about their craft and rocks.

With William Holland making the decision to not offer classes for 2021 and possible virtual offerings, several folks in our clubhouse are discussing offering 2-4 day workshops. We would love to hear your feedback

on these exciting possibilities and topics you would like to learn.

Rumor has it that our new 36" Slab

Saw is being shipping finally. Stay tuned for the arrival of Gigantor!

Lots of news from various departments on this issue – It's exciting to see everyone heading back.

Those of you who have migrated home for the summer and those who are heading out on your Rock Hounding exploits. We look forward to pics and updates. See you back this fall.

Finally, our Tailgate will be Saturday June 5 starting at 9 a.m. in the parking lot. Several members have contacted me saying they are clearing out excess Rocks & slabs and will be bringing them to the Tailgate. The club will have slabs available also, plus several pieces of used equipment.

Since we are not having Regular Club Meetings, Members are welcome to come to the Board Meetings on the 2nd Monday of each month at 6:30 p.m.

Time to stock up on sun block and enjoy getting out into our beautiful weather!

Gerri Lundergan
813-943-5665
dunpaintedfarm@yahoo.com



METAL CLAY CLASSES WITH BARBARA RIVOLTA

Beginning June 3, we welcome Barbara Rivolta to the clubhouse. She is a retired Museum Professor with a background in Near Eastern Archaeology and the history of Ceramics, she is a Mixed Media Artist who combines ceramic and metal clay with glass and other materials and how to combine various media. She is inspired by Ancient Art and especially lines and shapes of Ancient Pottery. She is an Instructor for Camp PMC Certification Program Adventures in Metal Clay.

Metal Clay is made from powdered metal and organic binders mixed with water. Fired in a Kiln or with a torch, metal clay allows for deep textures, sculpted, and molded elements, with great details that can be combined with Metal Smithed components. It is ideal for mixed media jewelry combining CZ's, glass, ceramic and other materials. Projects in Bronze and Silver clays emphasize technique, construction and design while allowing for different skill levels, creativity, and personalization.

Course is 6 weeks: 3 hours per class. 12-3 p.m. Thursday starting June 10th. Cost \$185 plus cost of materials. Materials will run approximately \$170 +/- including findings. Lab Fee made payable to the Clubhouse is \$90. Bronze clay is \$15/gram and Silver Clay is \$65/gram. Class is open to all levels, max students 8, minimum of 3 to hold the class.

Contact Barbara Rivolta to reserve your space barbara.rivolta@gmail.com.

BEADERS BACK IN BUSINESS!



JOIN THE
BEADERS
TUESDAYS
10 A.M.-
12 P.M.

NEW GEM TREE WORKSHOP JULY 13-15, 10 AM - 4 PM

Announcing a new workshop for "budding" Gem Tree artists. Three days, from 10 a.m.-4 p.m., with a break for lunch, so bring your own food!

We will do a basic tree first, talk about some gem tree design concepts, then move on to a Cherry Tree and finally, a Christmas Tree. Workshop fee for all materials and 3 days of class time is \$80. Space limited to 6 students, so sign up early! Contact Jerri Heer- jheerx6@aol.com.



LAPIDARY CORNER

with Gerri Lundergan



We just graduated another round of Beginning Cabochon students and Cab 2 students.

The next Beginning Cabochon class will start June 12.

Our Beginning Cabochon class is a 6 week course that covers several shapes, theory of each shape, choosing materials, shop safety, use of Lapidary machines and trim saws, working a variety of materials from soft, blended and hard, plus the techniques and theory of each. Cost is \$130 plus a \$50 materials/Lab fee.

- Class is limited to 6 students
- Cabochon 2 – this class will take your skills to the next level and get your cabs

ready to set in the metal shop. Calibrated Round Cabs with Even slightly angled girdles, the Theory of Why, filling gaps with epoxy, working a Mexican Fire Opal (this begins Basic Opal Theory), how to put a channel around a Cabochon.

- Class is 6 weeks – cost is \$130 plus \$50 materials/ Lab fee
- Cabochon 3- Doublets, Theory and Techniques of making them, Theory and techniques of Hearts, Stabilizing Basics
- Class is 6 weeks - cost is \$130 plus \$50 materials/Lab fee
-

Members – you get 10% off when you buy CabKing products. Not the machines, but products. Call and get Jennifer on the phone. The wheels we use are CabKing wheels.

Slab Sales – we have slabs for sale Tuesday evenings 6-8 p.m., and Saturdays.

There is also an album on our Facebook page of Slabs.

We also post on a couple Facebook pages throughout the month. We post the announcement on our Facebook page - what days and what pages when we do put them up.

Slabbing – material is running about 2-3 weeks

Cost to have material slabbed is 40¢ square inch for members, 50¢ square inch for non-members. We may trade 1/3 of the slabbing if the material is usable or sellable. It is our option to make that call – not automatic.

Lapidary Open Shop is Tuesday evening 6-9 p.m., \$5/hour. Thursday morning 9 a.m.-12 p.m. \$5/hour. You need to reserve a spot since we only have 6 machines. Exact change, check or PayPal

JOHN LEAVY'S FINISHED STONE FROM CLASS



METAL SHOP NEWS

Hello Everyone! I hope all of you have had a great April. The Metal Shop was busy in April, and it looks like it will be even busier in May, which is a huge blessing.

Deanne Heath and Donna Bravo completed the Tuesday afternoon Silver I class April 6. Their last project for the class was a split-shank ring with a cabochon. Both of the ladies did a beautiful job on their rings, and we all had a lot of fun.

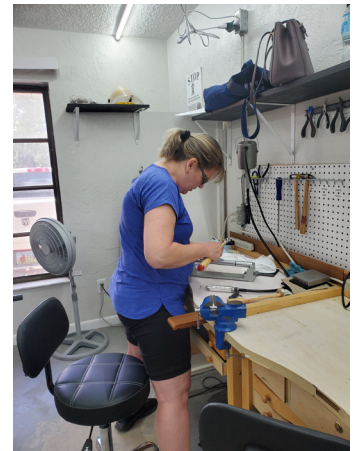


Our next Silver I class started Tuesday, April 20th, from 6-9 p.m. We have 3 students, and they have already completed a hammered copper bangle bracelet, and they are close to finishing their textured, Sterling Silver ring band. This Tuesday, they will finish the ring, and they will start on their pendants with a cabochon setting. After the pendant, they will do their final project, which is a split-shank ring, with a cabochon. I expect the class to finish around the second week of June. Afterwards, I will be starting another Silver I class around the 3rd week of June. This class will take place on Tuesday afternoon. I have 4 available spots, and 2 are already taken, so if you are interested in taking this class, get with me as soon as possible.

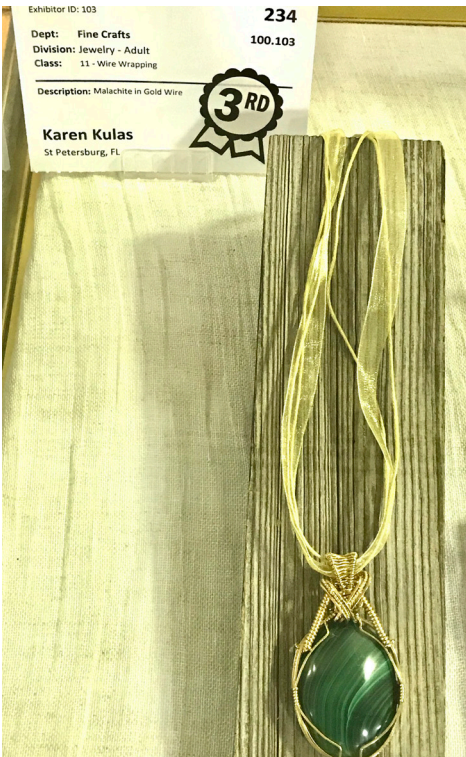
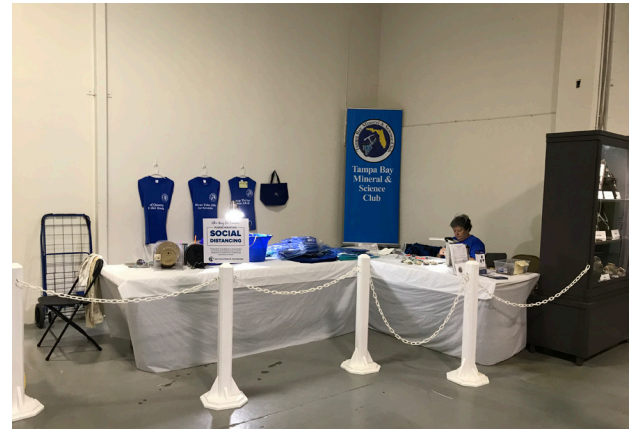
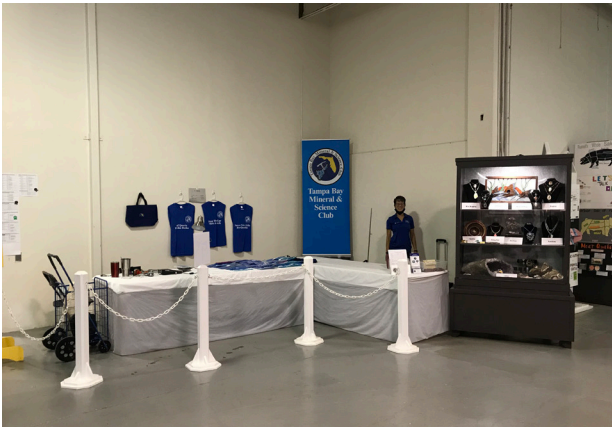
In other Metal Shop news, Kym Hoerr started the Lost Wax Casting Class this past Saturday, April 29th, from 10 a.m.-1 p.m. This class will take place in the Metal Shop on the first and third Saturday of each month. I believe this class is full, and she is taking reservations for the next class.

Open Shop for the month of April is Saturday, May 8th from 9 a.m. to 12 p.m. and Saturday, May 22 from 9 a.m. to 12 p.m. Volunteers still needed. We still need volunteers to be monitors in Open Shop. You pick the day and the hours that you want to volunteer. Also, please let me know if any of you are willing to teach a class or a workshop.

SILVER ONE GRADUATES DEANNE HEATH AND DONNA BRAVO



MAKING A SPLASH AT THE FLORIDA STATE FAIR



TAMPA BAY MINERAL AND SCIENCE CLUB BOARD MEETING

April 14, 2021

Board Meeting Members in Attendance: Susan Buc-ciero, Gerri Lundergan, Jerri Heer, Tony Carrino, Christy Gorrow, Melinda Riddle, James Denslow.

General Member Attendance: Ken Moser.

Meeting called to order at 6:33 p.m.

Secretary's Minutes from March 2021 Board Meet-ing: Motion to accept March 2021 minutes by Jerri Heer; Second by Melinda Riddle.

Treasurer's Report: \$17,851.28 checking; \$43,393.73 money market; Total \$61,245.01; Pay Pal account: \$2,746.86; Plus refund from Sadye Martin Gibbs Community Center in Plant City in the amount of \$450. Motion to accept treasurer's report by Melinda Riddle, and second by Christy Gorrow.

OLD BUSINESS

Show Report:

Expenses: Space: \$2,957.59 less \$450.00 refund; \$1,328.91 tables; Security \$1,456; FB \$400; Signs \$304.50; Misc \$743.00 Rugs, Electrical Cords; \$128.00 for the police admin fee.

Total expenses \$6,868.67.

Income: 36 vendors; Admissions \$3,211; Club Tables \$1,004; Dealers \$1,5340.00; Total income \$19,555.

Profit: \$12,686.33.

The general comparison between the Plant City and the Strawberry Festival venues is that the Plant City venue has been more favorable. It is being discussed to add tables to the club table in order to provide a better way for TBSMC member vendors to sell their items at the next show.

Show Shed Repairs: Floors have been repaired; door frames have been repaired; all spaces have been sealed.

Annual Audit: Jerri Heer will be performing an audit in the foreseeable future. ACTION ITEM: Jerri Heer

will report on status of annual audit.

NEW BUSINESS

State Fair Event: April 22 – May 2, 10 a.m. – 4 p.m. each day. Club needs volunteers for club table and demo/display case. Club is restricted to 2 members only for each day; Gerri has requested that volun-teers work for full-day shifts, if possible. Otherwise, the day can be split for 10 a.m. – 1 p.m. and 1 – 4 p.m. shifts.

November Show: Vendors want to sign up for No-vember Show. The sluice will be put outside the lobby as well as the display cases. Two tables will be added to club tables so that members can sell their items. The club might want to offer small workshops at the show or other presentations. ACTION ITEM: Gerri Lundergan will reach out to a mine owner to confirm attendance at the show for a presentation; either in the presentation room or at his table.

Classes/Workshops: Beginning Silver is being of-fered on Tuesday evenings with Lisa Miller. Gerri will be offering open Lapidary Shop on Tuesday evenings as well. The beading instructors have resumed their classes on Tuesday mornings. Other instructors are being contacted to offer additional classes. Stained glass might be offered in the summer by Ken Mosely.

June Tail Gate: Tail gate is being postponed to the 1st Saturday in June: June 5.

Masks in the Clubhouse: Some members have expressed that because they have received their COVID vaccinations, they no longer want to wear the masks. The club should follow, at this time, the Hillsborough County mask mandate and all masks should be worn at all times while in the clubhouse. Motion to continue to follow the county's mandates by Jerri Heer and second by Tony Carrino.

Items from Floor:

Continued on next page

Continued from previous page

New Trifold Brochures: New brochures were printed and distributed to executive members; the club now has 500 copies.

Painting of the Clubhouse: Gerri is setting an appointment with contractor for quote; the windows need to be resealed and the sun room will have the exterior boards replaced by club members.

Motion to adjourn by Melinda; Second to adjourn by Tony Carrino.

Meeting adjourned at 7:15 p.m.

MISCELLANEOUS CLASS NEWS

FACETING NEWS

Faceting is on Hiatus until August when Tom will return.

CASTING/LOST WAX CARVING

Kym has a full class for this first session. Contact her to get on her waiting list. Colonelkym06@gmail.com



SUPPORT TBM&SC BY SHOPPING AT



BRAD'S BENCH TIPS

SEPARATING DISCS

Separating Discs (also called Cutoff Wheels) are

inexpensive and do a great job cutting or shaping steel. You can use them to sharpen tool points, cut piano wire to length, make slots, and sharpen worn drills. Other uses include modifying pliers and making your own design stamps.



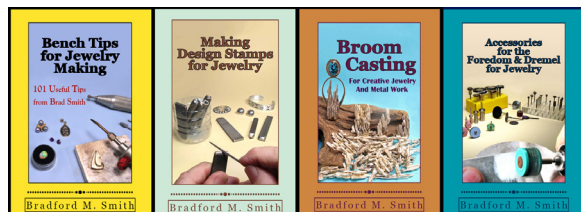
My preference is the one inch diameter size. Be sure to hold the wheel firmly so nothing moves to break the disc, and definitely wear your safety glasses. Those are little flakes of steel coming off the disk.

BTW - Separating Discs are rather poor at soft metals like copper, silver and gold. Soft metals clog up the cutting edges.

DEBURRING JUMP RINGS

When cutting jump rings from large gauge wire for chain making, you'll notice the saw leaves a small burr. An easy way to remove these is to tumble the rings with some fine-cut pyramids. It's best not to tumble for a long period with the pyramids because it will remove the polished finish from the wire.

No tumbler, no problem. You don't actually need a tumbler. I just put a handful of pyramids in a wide mouth plastic jar and shake for a bit. You can find these pyramids in the tumble finishing section of most jewelry supply catalogs.



Be More Productive With Brad's "How To" Books:
[Amazon.com/author/bradfordsmith](https://www.amazon.com/author/bradfordsmith)