

THE CORAL GEODE

March 2026



Brilliant!

Students learn opal inlay how to create unique cabochons from guest instructor Chuck Bruce. Page 8

IN THIS ISSUE

- President's message, 2
- New members, 2
- Spring Show update, 3
- Members' showcase, 5
- Table crafts, 10
- Faceting, 12
- Lapidary, 13
- Casting, 15
- Metal clay, 15
- Metal, 16
- Bench Tips, 17
- Calendar, 18
- General members' minutes, 19
- Board meeting minutes, 20

TBMSC COMMITTEES

The Coral Geode newsletter:

Lyra Solochek, editor/designer

Show:

Lyra Solochek (chair), Brenda Gregory, Cindy Britten, Linda Collins

Membership:

Christy Gorrow, director

Social media

and advertising:

Lyra Solochek, Miles Bhavé, Brenda Gregory

Webmaster:

Miles Bhavé, Lyra Solochek

Field trip:

Carlo Lucin, chair

Program coordinator:

Lyra Solochek, Cindy Britten

Sunshine:

Brenda Gregory

Education/youth:

Cindy Britten

Landscape:

Brenda Gregory, Carlo Lucin

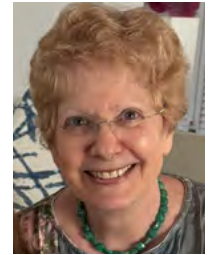
President's message

There has been progress toward improving the water system in Lapidary. There is a hot/cold valve and a pressure valve with a gauge so we can now have much more control. The shower stall has been wall boarded and will be painted. The Lapidary shop has been cleaned and reorganized as well.

Lighting will be upgraded both inside the clubhouse and out this coming week. A 20-foot storage container will be delivered and placed on the concrete pad. A huge effort has been made to reorganize and box our mineral collection, which is still ongoing. It will be stored in the container while the new flooring is installed.

My thanks and congratulations to those who have been working so hard to accomplish all this. However our work is not done yet. Everything in the main area of the Club will be moved to storage until the floors are redone. Much help will be needed in the upcoming weeks. I hope you will try to help out with the work of moving when the time comes.

We need helpers to organize the show items in preparation for moving them to the venue. Please see details on **Page 3-4**. I hope you can help. Thank you in advance!



Ellen Sisco
President

Don't forget to renew your membership

Please don't forget dues expired on December 31, 2025, so you need to renew to maintain your membership and access to classes and open shop time.

Check out all the new and wonderful classes we have scheduled and all the upgrades that are completed and still to come in the clubhouse. Surely, you want to be part of this amazing season of change and opportunity. So, this is a reminder that it's time to renew your membership. The cost has remained the same as last year: \$50 for the first adult and \$25 each for additional adults. Youth memberships are still \$5.

A few people have taken advantage of a 4-year membership for \$180 with the second adult being an additional \$90. And, the best offer for your dollar is a Lifetime membership for \$600. You can renew online at our website: tampabayrockclub.org

Or mail a check to TBMSC, 10207 Fisher Ave., Tampa, FL 33619. Or stop by the clubhouse on a Saturday between 10 a.m. and 1 p.m. to have me process your membership in person. I can take cash, check or credit card.

Hope to see you soon,
– Christy Gorrow, Membership



New members!

Aditi Sharma
Paula Wyricki
Heather Hislip
Mitul Shah
Gianna McNealy
Tiffany Elliot

ABOUT OUR CLUB



Address:
10207 Fisher Ave.,
Tampa, FL 33619



Email:
info@tampabayrockclub.org



Phone:
(813) 684-2039



Website:
tampabayrockclub.org



Calendar

SIGN UP TO VOLUNTEER AT THE SHOW **HERE.**

Counting down to the Spring Show!

IMPORTANT DATES

March 14: Show prep work day. 8 a.m. start at the clubhouse.

March 28: Show prep backup work day if we get rained out or we have more work left to do.

April 2: Move in and setup at the Florida State Fairgrounds

April 3-4: 6th Annual Spring Gem, Mineral and Jewelry Show at the Florida State Fairgrounds

Despite our challenging schedule for holding a show on Easter weekend, vendor applications (using our new on-line process) are rolling in. I expect to fill the venue with at least 50 vendors, despite several regular vendors not attending because of the holiday.

Why, you say, didn't we just re-schedule for another weekend? We tried. But a venue like the fairgrounds is booked sometimes years in advance. The only other spring availability was the Memorial Day weekend, which, actually is much worse for attendance. As you know, these shows are the primary source of income for our club. So, we chose to do the best with what we have.

In order to maximize potential attendance, we're extending the show hours: 10 a.m.-7 p.m. Friday, and 9 a.m.-6 p.m. Saturday.



For this show, we will try something new: We're highlighting some of our small local artisans by concentrating them in one area and adding signage to promote them. My hope is that this area will grow enough to where we can hold another separate show, possibly in the summer, just for small or new artists.



Another big change is parking. Up to now, the club had been covering parking for show guests. But with the increase in parking fees, doing this has become unsustainable. Therefore, starting with show, we will no longer offer free parking. (This seems to be the trend as other events at the fairground no longer offer free parking, including

Tampa Bay Mineral and Science Club presents
**6TH ANNUAL SPRING
GEM,
MINERAL
& JEWELRY
SHOW**
APRIL 3-4, 2026
TAMPA

**10A.M.-7 P.M. FRIDAY
9 A.M.-6 P.M. SATURDAY**

WHERE: Florida State Fairgrounds
Special Events Center,
4802 U.S. 301 N, Tampa, FL
ADMISSION: \$8 adults, \$7 seniors
and military (with ID), kids 12
and under free
PARKING: Via MLK entrance,
\$12 at gate/\$10 pre-purchase
WEBSITE: tampabayrockclub.org/show-information

Vendor information, email tbmscshow@gmail.com

Continued on next page

Digital billboards going up soon



Continued from previous page

at the State Fair itself.) Parking will be \$12 at the gate, but guests may prepurchase parking for \$2 off on the [fairgrounds website](#).

To offset this pain-point for guests, we have reduced the admission by \$4 per person to \$8 adults, \$7 seniors/military, and free for kids 12 and under. Entry is still good for both days.



Click here to sign up to volunteer at the show



Not having the parking costs allows us to focus more on advertisement. In addition to increasing our efforts on social media and Google searches, we are trying out some digital billboards in Hillsborough County's high traffic areas to promote our event. The ads (**shown above**) should be starting to appear next week, so keep your eyes peeled and let us know when you spot one! The ads will appear on a rotating basis, and we hope to catch the eye of drivers.

The big news: We were able to acquire the domain of "gemshowFL.com." So the billboards will show this short, easy-to-remember URL to drivers.

A big shoutout to board member Milind "Miles" Bhave, who has been working with me on the vendor website and advertisement efforts.



We need volunteers to prepare for the show, and to staff the event. Show prep is March 14, starting at 8 a.m. We will continue on March 28 if we need another day to finish. Here are some tasks:

- Inventory and repack what's in the show shed and label the bins for movers.
- Repair the sluice for the kids area
- Identify and relabel specimens for the kids touch table.
- Identify and price slabs, rough, and equipment we'll be selling at the show.



For the show itself, we will need volunteers to help run the event for Thursday setup, Friday-Saturday show, and Saturday afternoon breakdown. Volunteer signup is available [here](#). Please sign up for as many shifts as you can. The event's success depends on member participation. Volunteers will receive free admission as well as parking to the show. A parking pass link will be emailed to those who sign up, so please make sure you have the correct email when you sign up. Without the digital pass, you will have to pay for parking yourself.



Finally, we will have some flyers available to pick up at the club on Saturday. Please take a couple and post them where you frequent in your community.

Thank you all for your help.

— Lyra Solochek, Show Chair

Help us make our mineral displays shine!

Brenda Gregory and Cindy Britten are currently inventorying our rock/mineral collection and giving our display cabinets a makeover. This is all part of preparations to clear the clubhouse to install a new floor later this year.

Thank you to all of you that have brought in boxes for the storage of the rocks/minerals. We are still looking for:

Sturdy Boxes: Ideally 14x14x10 or smaller. Due to the mass of some of the specimens, large boxes can't be used.

Display Stands: Think creative: napkin rings, candle bases, or plant holders that we can upcycle! Actual display stands are welcome too!

Want to join the fun?

If you have any items to donate or want to spend a Tuesday evening (6-9 p.m.) helping us out, we'd love to see you there! Any help or donations are so appreciated!

Thanks for being such a supportive community. We can't wait to see the finished display, and we'd love for you to be a part of it!



candle holders



flower pots



wooden boxes

MEMBERS' SHOWCASE



Inlay rings by Jim Kammel

Show off your work! Send in a photo to geodeeditor@gmail.com, subject line: Showcase



Closeout sale

Our longtime vendors, Tom and Judy Mitchell of Mitchell Jewelry Studio, are retiring from the show business. They've reached out to see if anyone would like to purchase some of their show equipment.

Items for sale include a Thum- bler Tumbler, GRS Magnablock, show table cloths (purple), glass display cases, light system, and much more.

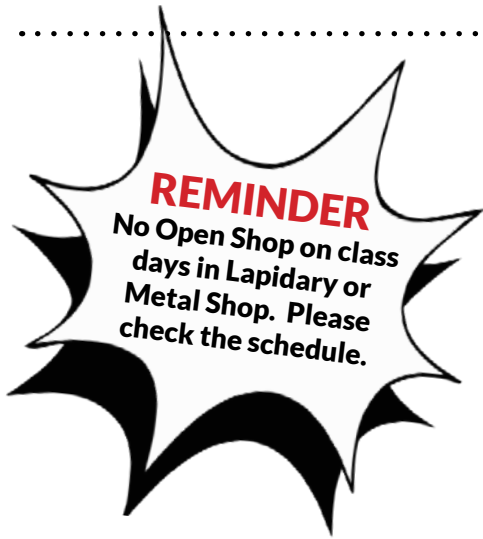
A full list and prices will be posted on the clubhouse bulletin board. Or contact Lyra Solochek at tbmssc-show@gmail.com for a copy.

Please reach out to the Mitchells directly for more information about their products or to purchase.

MARCH MEMBERS MEETING

Instructors share their jewelry-making tool tips and tricks at the March general meeting.





INSTRUCTOR LIST

Linda Collins

LCollins1953@gmail.com

Instructor for Cold Connections, Wire Wrapping, Lapidary, Silver, Metal Shop foreman

Christy Gorrow

cgorrow@juno.com

Instructor for Beading, Kumihimo, Viking Knit, Chaining and Intarsia

Jim Kammel

jmkammel@gmail.com

Faceting foreman and instructor

Mark Lauer

mdl3153@aol.com

Casting instructor

Lisa Miller

meggymoo65@gmail.com

Silver instructor

Lyra Solochek

lyrasolochek@gmail.com

Metal Clay foreman and instructor, Lapidary instructor

Jojo Torres

ceramics.johannatorres@gmail.com

Lapidary

Leah Welch

rockabundance74@gmail.com

Intarsia and Lapidary instructor and Lapidary foreman

Club gem shows in Florida

March 21-22—TAMPA: Annual show; Tampa Bay Fossil Club; Florida State Fairgrounds, 4800 US-301; Sat. 9-5, Sun. 10-4; Adults \$10, Kids 12 and under free; The Ice Age Returns! Florida's largest prehistoric show, fossils, artifacts, and oddities. Educational activities for children and adults. Exhibits also include gems, minerals, fossil shells, oddities and antique bottles. Vendors from Florida and around the world will sell and trade fossils. tampabayfossilclub.com

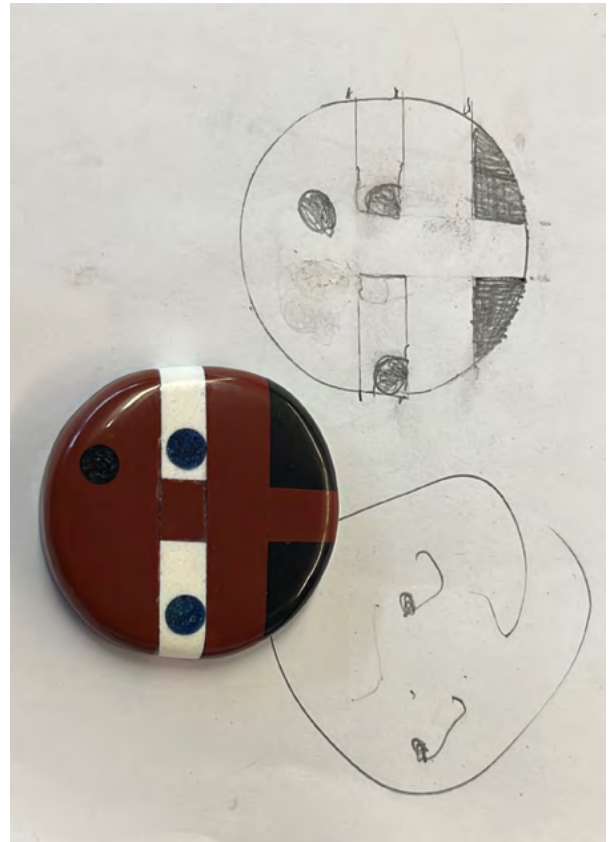
April 3-4—TAMPA: Annual show; Tampa Bay Mineral and Science Club; Florida State Fairgrounds Special Events Center, 4802 U.S. 301 N; Fri. 10-7, Sat. 9-6; \$8 adults, \$7 seniors and military, kids under 12 free; The 6th annual Spring Gem, Mineral and Jewelry Show with over 50 vendors. The premier event for mineral collectors and jewelry enthusiasts offers slabs, cabochons, beads, gemstones, fossils, minerals, jewelry, and more. Kids' area activities. tampabayrockclub.org/show-information

April 18-19—ORLANDO: Show and sale; Central Florida Mineral & Gem Society, Inc.; Florida National Guard Armory, 2809 S. Fern Creek Ave; Sat. 9-5, Sun. 9-4; Adults \$6 per day, Kids \$3 per day, Kids in Scout uniform Free; Central Florida Mineral & Gem Society, Inc., a non-profit 501(C) 3, educational organization, is sponsoring a Rock, Mineral, Gem, Jewelry & Fossil Show. Vendors offering gemstones, crystals, minerals, beads, hand-crafted jewelry. Live demonstrations, silent auction, door prizes & family activities. <https://cfmgs.org>

CLASS REFUND POLICY

- **Registration & Deposits:** Class signups are handled through SignUp Genius. A deposit is required to reserve a spot. Balance due day of class.
- **Refund Eligibility:** To receive a full refund of the deposit, participants must notify the Tampa Mineral and Science Club at least 14 days before the first day of class.
- **Rescheduling:** Students may choose to either receive a full refund or reschedule once to a different class date.
- **Emergency Cancellations:** In case of an emergency, a refund or re-scheduling may be possible. Contact the club for details.
- **Processing Fee:** A 10% cancellation fee will be deducted from all refunds for processing.
- **Transfers:** Class registration can be transferred once to another class of equal value. To request a refund or transfer, email tampamineral@gmail.com with your name, and for transfers, include the title and date of the class you'd like to attend instead.
- **No-Shows:** No refunds or credits will be issued for no-call, no-show participants.
- **Club Cancellations:** If the club cancels a class, all registered participants will receive a full refund.

Three classes with guest instructor Chuck Bruce



Continued on next page

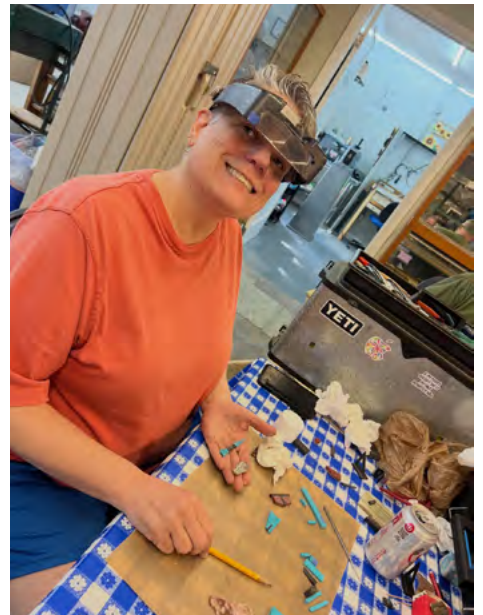


TABLE CRAFTS

Strong showing at the Strawberry Festival

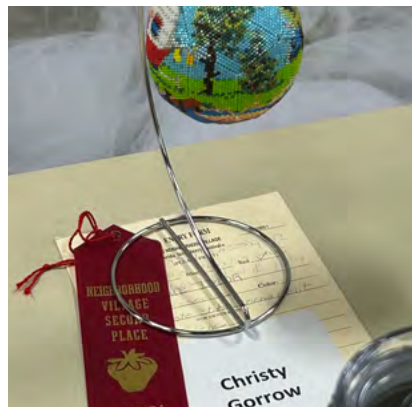


Table crafts continues to meet on Wednesdays from noon to 3 p.m. The cost is \$10 for the 3-hour session. We are currently working on Peyote stitching, Loom weaving, and Kumihimo. If anyone would like to learn any of these techniques feel free to join us.

Last month I mentioned that a number of our group was putting the finishing touches on items that we wanted to submit to the Neighborhood Village Competitions at the Strawberry Festival. Well, both Linda Stephens and I did very well. I submitted 9 pieces and Linda submitted 20 pieces. I got a blue or red ribbon for all 9 items, and I know Linda got at least 1 blue and 1 red, plus the President's Award. I don't have photos of everything but a few of my friends sent these.

Linda Collins also won first place for her silver pieces.

– Christy Garrow

TWO PARENT-CHILD CLASSES – OR FOR ANYONE ELSE

This Sunday, March 15

Wire wrapping

\$25 for the pair, or one adult

If you're interested and would like to start Wire Wrapping, this is the class for you! This class gives you the knowledge to manipulate the wire and capture your polished/tumbled precious stones using basic techniques. The finished projects capture the stone completed with a simple bail, wire decoration and chain.

Click here to sign up



Each student should be able to

complete two beginners wrapped projects. All materials will be included in the class fee. Tools available on loan for your convenience. Bring your own magnifiers, if needed. Go to SignUp Genius, sign up to reserve a seat.
Date: Noon-3 p.m. Sunday, March 15
Class Fee: \$25 for a parent-child combo, or one adult



This Sunday, March 15

Beaded bracelet

\$25 for the pair, or one adult

Each person will be able to create a bracelet for him- or herself or for a gift. You can choose beads and clasps from our selection to make your own statement piece.

Click here to sign up



Date: Noon-3 p.m. Sunday, March 15
Class Fee: \$25 for a parent-child combo, or one adult. Go to SignUp Genius, sign up to reserve a seat.



FACETING

Beginning Faceting

- 9 a.m.-3 p.m. March 21-22 (FULL)
- 9 a.m.-3 p.m. April 18-19

This is a two-day class on cutting faceted gemstones (transparent stones similar in appearance to diamonds). You will learn how to choose cutting material, dop the stone, cut and polish facets, transfer a stone, and proper operation and care of a faceting machine. Each student will complete one stone. Cost is \$230 total, which includes materials, instructor fee, club shop time and use of machines. A deposit of \$130 is required to reserve a seat. The balance of \$100 should be paid directly to the instructor on the first day of class.

Each student should have his/her own Optivisor to closely examine the stone during the cutting process. These are available on Amazon or Harbor Freight. You must wear closed-toed shoes. No loose clothing, and long hair must be tied back.



Click here to sign up



Our most recent graduate of our faceting course: Lindsay Saldana

Practice your faceting skills

If you've completed the full faceting course, you are qualified to come to the club's Faceting Open Shop. These are available whenever there is a faceting class. Three machines are dedicated to class

students, and one machine is reserved for Open Shop.

Click here to sign up



But make sure you reserve your spot, and do so early. To

see available days and to reserve a station, go to "Faceting Open Shop" on [Signup Genius](#).

Open shop is \$6 per hour. Payment by cash (exact change), Paypal or card.

Faceting requires practice. Keep honing your skills by cutting different materials and designs. Ask us about materials to practice with, or some new designs to try.



LAPIDARY



February students' work



Beginning Cabochon class

- 9 a.m.-5:30 p.m. March 21-22
- 9 a.m.-5:30 p.m. April 18-19

This workshop covers the basics of turning slabs of rocks into polished pieces. The cost of the class is \$230, which includes materials, instructor fees and shop time. A deposit of \$130 is required to save a spot, and the balance of \$100 should be paid to the instructor the day of the class.

You must wear closed-toed shoes. No loose clothing, and long hair must be tied back. Bring a waterproof apron, an Optivisor/magnifier, a large towel and lunch.

[Click here to sign up](#)



Lapidary Open Shop

Members who completed the Beginning Cabochon class may use equipment in the Lapidary Shop during Open Shop. You must present your shop pass to the monitor when you sign in. If you do not have a card, ask

the monitor or shop foreman for one. If you have previous cabbing experience, but did not take the Beginning Cabochon class, talk to the shop foreman, Leah Welch, for a Skills Check to get your shop pass. She may be reached at rockabundance74@gmail.com. You must be a current member to use club facilities. Cost is \$6 per hour. PayPal, credit card, Prepaid Shop Card or exact change only. Please pay the shop monitor or club staff before you leave.

[Click here to sign up](#)



LAPIDARY



Please help take care of our equipment

Attention Cabbers. It's really important that we follow our shop rules. Several of our wheels were damaged with gouges from misuse. Our lapidary buffer had turned black after it was used to polish metal. (For metals, please use the buffer in the metal shop.)

We've replaced the bad wheels, and most machines are up and running. But please keep in mind that some new wheels can be very aggressive. Avoid cutting soft stones until the wheels are broken in.



We are replacing our slanted flat lap, which has been a maintenance nightmare. Instead, we will set up the base of the Graves faceting machine. It should be easier to work with, since it's flat instead of slanted. Fill the reservoir with water to get a slow steady drip on the laps.

One note of caution: This is not a water-tight system. So please keep the water in the cutting basin only, and not on the machine. Any moisture on the speed control will short the system.



Another upgrade coming: Instead of having single wheel cabbers for our high-polish wheels, we are going to use a Diamond Pacific Genie capping machine. This allows us to have two sets of polishing wheels, allowing for less time waiting your turn for the high-polish step.



In order to keep our shop fees at this reasonable rate of \$6 per hour, please follow the shop rules and take care of the equipment. After all, the shop is for you to use. Please help us keep it in top shape for all to enjoy.

— Lyra Solochek

Let's review the Lapidary Shop rules

- You must be a member, and have a shop pass (by completing a Beginning Cabochon class, or with shop foreman approval).
- All members must sign in and sign out when using the Shop.
- Loose clothing, long hair, ties, dangling jewelry, scarves, etc., must be secured or tied up to prevent them from being caught in rotating machines. Closed-toe shoes only. No sandals.
- Dop sticks stay in the shop. Do not take them home with you.
- Cabs must be preformed on the metal wheels before going to the resin wheels 280 and up. This is to prevent them from getting gouged and ruined. If you're cutting a teardrop shape or anything with angular corners, make sure the pointed part is pointed down, away from the rotation of the wheel.
- Make sure you work the cabs through the grits in sequence. Finish one level completely before moving on. Do not skip. If a scratch is there at 600, it won't go away on a 3000.
- Nothing harder than 7.5 on the Mohs scale. No rubies or corundum.
- Only work on stones, crystals or glass. No metal, wood, ceramics, resin, amber or plastic.
- Prohibited materials: Pyrite, Psilomelane, shells and bones, Bumblebee Jasper, and other toxic or radioactive materials. Fossilized shells are allowed. Don't cut unless you know what it is. When in doubt, ask the monitor or instructor.
- The diamond grinding wheels are not to be used for large rock; they are for cabochon grinding use only.
- The shop is for personal projects only. No commercial or mass production.
- Do not bring a batch of cabs for polishing only.
- Clean the work area thoroughly after use. The last 15 minutes before the end of your session should be dedicated to cleaning up.
- Harassment, intimidation, or any disruptive behavior is not tolerated.
- Violating these shop rules, repeatedly misusing equipment or ignoring instructor/monitor warnings may result in suspension or permanent banishment from the Lapidary Shop.

CASTING

February casting class



Intro to wax carving and silver centrifuge casting

**March 28-29 (Full)
April 25-26 (Full)**

This two-day class begins on the morning of Day 1 with an introduction to wax carving, where you'll create a freeform ring. In the afternoon, you'll learn how to set up a plaster of Paris mold. This mold will be placed in the kiln at the end of the day for burnout overnight.

**Click here
to sign up**



On Day 2, you'll cast your ring in sterling silver and explore various methods to finish and polish your piece. Previous experience in silver classes is strongly recommended.

The fee for the class is \$250, which includes all materials, instructor fee, and shop time. A deposit of \$150 is required to reserve your spot, with the remaining \$100 payable to the instructor on the day of the class.

For more information, contact instructor Mark Lauer at mdl3153@aol.com.



METAL CLAY

March 21

Intro to Metal Clay

**9 a.m.-3 p.m. March 21 (Full)
9 a.m.-3 p.m. April 25**

This is a great class for those who want to try out metal clay. This class will introduce you to the proper basic techniques of roll-

ing, texturing, shaping and cutting metal clay. You will learn how to care for and rehydrate

**Click here
to sign up**



the clay, dry and refine shapes, fire, polish and patina your pieces. You will even learn how to torch fire!

You will make a pendant with a foldover bail and embellishments, and a pair of earrings. This is an intensive one-day workshop.

Clay and all findings needed for the projects are included in the price of the class.

Tools are available to borrow from the club. Please bring a lunch.

Materials:

- 15 grams fine silver metal clay
- jump rings
- ear wires
- leather cord

**Instructor and Materials Fee: \$160
TBMSC Fee: \$40**

For questions or more information, contact instructor Lyra Solochek at lyrasolochek@gmail.com.

METAL SHOP

Silversmithing 1.2: Split-shank ring

9 a.m.-1 p.m. April 11 and 18

In the second class of the Fundamentals of Silversmithing Course, the student will make a split-shank ring with a stone in it. This class consists of two four-hour classes.

**Click here
to sign up**



Cost: \$150* Materials and the use of tools are included in the cost.

(*Materials cost is subject to change based on market prices.)

Deposit of \$52 on Signup Genius required to save a seat.

Prerequisite: Must have completed Silver 1.1.

Students must bring own Optivisor. Closed-toe shoes required. No loose clothing; long hair must be tied back. Contact instructor Lisa Miller at meggymoo65@gmail.com or 772-631-1405 for more information about the Fundamentals of Silversmithing Course.



Silversmithing 1.3 class: Pendant

In the third and final class of the Fundamentals of Silversmithing Course, the student will create a sterling silver pendant featuring a round or oval cabochon. This class consists of two four-hour classes.

**Click here
to sign up**



- 9 a.m.-1 p.m. March 14 and March 21 (Full)
- 9 a.m.-1 p.m. May 2 and 9

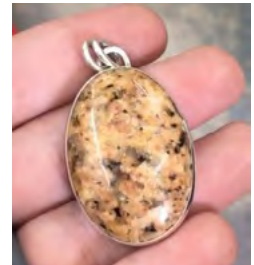
Cost: \$155* Materials and the use of tools are included in the cost. (*Materials cost is subject to change based on market prices.)

Deposit of \$52 on Signup Genius required to save a seat.

Prerequisite: Must have completed Silver 1.1 and 1.2.

Students must bring own Optivisor. Closed-toed shoes required.

Contact instructor Lisa Miller at meggymoo65@gmail.com or 772-631-1405 for more information about the Fundamentals of Silversmithing Course.



Metal Open Shop Reservations

**Click here
to sign up**



Members who completed the Beginning Silver course may use the Metal Shop during Open Shop hours. Open Shop hours are:

- Noon-6 p.m. Tuesdays
- 10 a.m.-1 p.m. Saturdays
- By appointment with shop foreman Linda Collins. Reach her by text at 508-944-3399.

You must present your shop pass to the monitor when you sign in. If you do not have a pass, ask the monitor or shop foreman about getting one. If you have previous smithing experience, but did not take the Beginning class, talk to the shop foreman for a Skills Check to get your shop pass. You must be a current member. Cost is \$6 per hour. PayPal, credit card or exact change only. Or purchase a pre-paid shop card.

CALENDAR



vecteezy.com

GENERAL CLUB HOURS

Tuesday: 4-8 p.m.

Thursday: By appointment

Saturday: 9 a.m.-1 p.m.

CLASSES, OPEN SHOP AND EVENTS

Tuesday, March 10, 2026

12 p.m. - 6 p.m. Metal Open Shop
4 p.m. - 8 p.m. Lapidary Open Shop

Wednesday, March 11, 2026

12 p.m. - 3 p.m. TABLE CRAFTS
6 p.m. - 9 p.m. TABLE CRAFTS

Saturday, March 14, 2026

9 a.m. - 1 p.m. Lapidary Open Shop
9 a.m. - 1 p.m. SILVER 1.3, Day 1
9 a.m. - 1 p.m. Show prep work day

Sunday, March 15, 2026

xxxxxxx

Tuesday, March 17, 2026

12 p.m. - 6 p.m. Metal Open Shop
4 p.m. - 8 p.m. Lapidary Open Shop

Wednesday, March 18, 2026

12 p.m. - 3 p.m. TABLE CRAFTS
6 p.m. - 9 p.m. TABLE CRAFTS

Saturday, March 21, 2026

8 a.m. - 3 p.m. FACETING, DAY 1
8 a.m. - 3 p.m. Faceting Open Shop
9 a.m. - 5:30 p.m. BEGINNING CABOCHON, Day 1
9 a.m. - 3 p.m. INTRO TO METAL CLAY
9 a.m. - 1 p.m. SILVER 1.3, Day 2

Sunday, March 22, 2026

8 a.m. - 3 p.m. FACETING, Day 2
8 a.m. - 3 p.m. Faceting Open Shop
9 a.m. - 5:30 p.m. BEGINNING CABOCHON, Day 2

Tuesday, March 24, 2026

12 p.m. - 6 p.m. Metal Open Shop
4 p.m. - 8 p.m. Lapidary Open Shop

Wednesday, March 25, 2026

12 p.m. - 3 p.m. TABLE CRAFTS
6 p.m. - 9 p.m. TABLE CRAFTS

Saturday, March 28, 2026

9 a.m. - 5:30 p.m. CASTING, Day 1
9 a.m. - 1 p.m. Lapidary Open Shop
9 a.m. - 1 p.m. Show prep work day

Sunday, March 29, 2026

9 a.m. - 5:30 p.m. CASTING, Day 2

Tuesday, March 31, 2026

12 p.m. - 6 p.m. Metal Open Shop
4 p.m. - 8 p.m. Lapidary Open Shop

Wednesday, April 1, 2026

12 p.m. - 3 p.m. TABLE CRAFTS

6 p.m. - 9 p.m. TABLE CRAFTS

Thursday, April 2, 2026 - Sunday, April 5, 2026

Club closed for Spring Show

Tuesday, April 7, 2026

12 p.m. - 6 p.m. Metal Open Shop
4 p.m. - 8 p.m. Lapidary Open Shop

Wednesday, April 8, 2026

12 p.m. - 3 p.m. TABLE CRAFTS
Calendar: 6 p.m. - 9 p.m. TABLE CRAFTS

Saturday, April 11, 2026

9 a.m. - 1 p.m. Lapidary Open Shop
9 a.m. - 1 p.m. SILVER 1.2, Day 1

Monday, April 13, 2026

6:30 p.m. - 8:30 p.m. TBMSC Board Meeting

Tuesday, April 14, 2026

12 p.m. - 6 p.m. Metal Open Shop
4 p.m. - 8 p.m. Lapidary Open Shop

Wednesday, April 15, 2026

12 p.m. - 3 p.m. TABLE CRAFTS
6 p.m. - 9 p.m. TABLE CRAFTS

Saturday, April 18, 2026

8 a.m. - 3 p.m. FACETING, DAY 1
8 a.m. - 3 p.m. Faceting Open Shop
9 a.m. - 5:30 p.m. BEGINNING CABOCHON, Day 1
9 a.m. - 1 p.m. SILVER 1.2, Day 2

Sunday, April 19, 2026

8 a.m. - 3 p.m. Faceting Open Shop
9 a.m. - 5:30 p.m. BEGINNING CABOCHON, Day 2

Tuesday, April 21, 2026

12 p.m. - 6 p.m. Metal Open Shop
4 p.m. - 8 p.m. Lapidary Open Shop

Wednesday, April 22, 2026

12 p.m. - 3 p.m. TABLE CRAFTS
6 p.m. - 9 p.m. TABLE CRAFTS

Saturday, April 25, 2026

9 a.m. - 5:30 p.m. CASTING, Day 1
9 a.m. - 3 p.m. INTRO TO METAL CLAY
9 a.m. - 1 p.m. Lapidary Open Shop

Sunday, April 26, 2026

9 a.m. - 5:30 p.m. CASTING, Day 2

Tuesday, April 28, 2026

12 p.m. - 6 p.m. Metal Open Shop

4 p.m. - 8 p.m. Lapidary Open Shop

Wednesday, April 29, 2026

12 p.m. - 3 p.m. TABLE CRAFTS
6 p.m. - 9 p.m. TABLE CRAFTS

Saturday, May 2, 2026

9 a.m. - 1 p.m. Lapidary Open Shop
9 a.m. - 1 p.m. SILVER 1.3, Part 1

Monday, May 4, 2026

6:30 p.m. - 8:30 p.m. TBMSC Board Meeting

Tuesday, May 5, 2026

12 p.m. - 6 p.m. Metal Open Shop
4 p.m. - 8 p.m. Lapidary Open Shop

Wednesday, May 6, 2026

12 p.m. - 3 p.m. TABLE CRAFTS
6 p.m. - 9 p.m. TABLE CRAFTS

Saturday, May 9, 2026

9 a.m. - 1 p.m. Lapidary Open Shop
9 a.m. - 1 p.m. SILVER 1.3, Day 2

Tuesday, May 12, 2026

12 p.m. - 6 p.m. Metal Open Shop
4 p.m. - 8 p.m. Lapidary Open Shop

Wednesday, May 13, 2026

12 p.m. - 3 p.m. TABLE CRAFTS
6 p.m. - 9 p.m. TABLE CRAFTS

Saturday, May 16, 2026

9 a.m. - 1 p.m. Lapidary Open Shop
10 a.m. - 1 p.m. Metal Open Shop

Tuesday, May 19, 2026

12 p.m. - 6 p.m. Metal Open Shop
4 p.m. - 8 p.m. Lapidary Open Shop

Wednesday, May 20, 2026

12 p.m. - 3 p.m. TABLE CRAFTS
6 p.m. - 9 p.m. TABLE CRAFTS

Saturday, May 23, 2026

9 a.m. - 1 p.m. Lapidary Open Shop
10 a.m. - 1 p.m. Metal Open Shop

Tuesday, May 26, 2026

12 p.m. - 6 p.m. Metal Open Shop
4 p.m. - 8 p.m. Lapidary Open Shop

Wednesday, May 27, 2026

12 p.m. - 3 p.m. TABLE CRAFTS
6 p.m. - 9 p.m. TABLE CRAFTS

Saturday, May 30, 2026

9 a.m. - 1 p.m. Lapidary Open Shop
10 a.m. - 1 p.m. Metal Open Shop

TBMSC General Membership Minutes

March 7, 2026

Call to Order: 12:10 PM by Lyra Solochek

Attendance: 20 members present

Administrative and General Updates

- Minutes: September meeting minutes approved (Motion: Melinda; Second: Linda Collins).
- Infrastructure: Construction is progressing; a new storage container is expected soon.
- Inventory: Progress continues on the Mineral Collection Inventory.
- Donations: Members suggested and offered to donate display stands for the updated Mineral Collection.
- Digital Transition: Vendor contracts are now digital. The club is working on a new website (TampaMineralScience.org), though it is currently in the bug-fixing stage.
- Upcoming Gem Show Details
 - Dates: Friday, April 3 (10 a.m. – 7 p.m.) and Saturday, April 4 (9 a.m. – 6 p.m.).
 - Logistics: Moving day is April 2.
 - Fees: Admission fee is reduced to \$8, as attendees are now responsible for their own parking fees.
 - New Domain: The club has acquired GemShowFL.com. Thank you Lyra for the acquisition!
 - Preparation: A work day is scheduled for March 14 to inventory show needs. The sluice requires repair before the show.

Class & Shop Updates

Important Dates:

March 14: Wire wrapping class.

March 15: Parent-child classes with Linda and Christy.

May: Daytime beginning Cabochon classes resume.

Silver Beginning classes booked through April. New rolling mill is operational.

Lapidary: New polishing wheels installed on Cab Kings. Use caution during break-in! Metal wheels will gradually be replaced with sintered wheels.

Faceting: One open shop spot available during class; early signup required.

Table Crafts: New Miyuki bead color cards are available to use. Contact Christy Gorrow.

Casting Wax: Casting has one opening left for March 28/29.

Metal Clay: March class is full, openings available for April class. Fee is \$200.

Member Recognition

Congratulations to Linda Collins, Christy Gorrow, and Linda Stephens for receiving ribbons for their entries in the Strawberry Festival!

Adjournment: 12:45 PM (Motion: Brenda Gregory; Second: Linda Collins).

TBMSC Board Meeting Minutes

March 2, 2026

Present: Ellen Sisco, Lyra Solochek, Linda Collins, Cindy Britten, Brenda Gregory, Miles Behave, Carlo Lucin , Christy Garrow, Kathy Reid, Patti Kepple

Call to order: 6:32 p.m.

Motion to approve February Board Meeting Minutes made by Linda Collins. Seconded by Lyra Solochek. Approved by all.

Treasurer's Report: Linda Collins

- Checking account balance is high. To prevent fraudulent charges, monies will be transferred to savings.
- \$1300 (approximate estimate) for property tax that is due.
- Insurance payment due.
- Fairgrounds payment for March is due.
- Motion to approve Treasurer's Report made by Cindy Britten. Seconded by Christi Garrow. Approved by all.

Show Update: Lyra Solochek

- 42 vendors so far; Lyra scouting other shows for possible vendors.
- 2 big vendors are not going to be in the show for Spring because of Easter.
- The club will no longer cover parking for attendees. That will save about \$10,000. We plan on using half for advertisement.
- Discussed incorporating educational/interest activities, especially for Friday show day.
- Peter doing cabbing demo again.
- Slide show for classes we offer to show at the membership desk.
- Discussion of how to better showcase our display cabinets (so they are not in back).
- Miles Bhave working on POS system using a new payment system. Also need \$1000-\$1500 for new tablets and a security stand to secure the tablets.
- Lyra Solochek made a motion to purchase new tablets/stands and another monitor (about \$1500). Approval of motion to purchase new show tablets made by Linda Collins. Seconded by Brenda Gregory, and approved by all.
- Digital billboard advertising. We will use this also for advertising.
- Discussed what activities to incorporate into Spring Show; Cut a rock, Rock ID....
- Sluice repair needs to be done. Flex Seal the whole thing.
- Show prep day is March 14. We will go through the show shed and get bins ready for movers.
- Second show prep work day, if needed – March 28th.

Construction Update: Ellen Sisco

- Ratified previous board vote to move on with construction – 8-1 vote to move forward
- Plumbers are still working on water (hot/cold) in Lapidary. Shower stall wallboard is up and will be painted.
- Outside lighting and new switch for lighting in back

Website status

We're using the new website platform to sign up vendors. There are some issues with payments that we're working through. Improving every day. Whole website will not be ready until after the show.

Rock Packing: Brenda Gregory and Cindy Britten

Coming along. Have cataloged and photographed over 400 specimens, 1 1/2 cabinets to go...

Continued from previous page

Department Updates

- Reminder: Members should NOT be working in an open shop without supervision.

Lapidary

- Discussed recent cab machine maintenance because of damaged and worn out wheels. There will be a break in period for new wheels. Members using open-shop should be warned about possible scratches
Reminder: do not overturn the water control knobs.
- Maintenance logs created. Must be updated any time maintenance is performed.
- Communication –if a machine needs to be serviced please let the monitor and/or foreman know immediately.
- We will be upgrading the cutting wheels to sintered. Prices are higher than regular plated wheels, but they will last for years.
- Use donated Diamond Pacific Genie cabbing machine to replace single wheel polishing machines. Will install two sets of polishing wheels
- Slanted Flat lap will be replaced with a Graves faceting machine which will be used as a flat lap.

Silver: Linda Collins

- Inventory is done
- Need a sign-in sheet for anyone who goes into the silver shop – tools are disappearing or being misplaced
- If using work benches for something other than silver – the trays should be covered with foil paper

Casting: Lyra Solochek

- Mark has March and April classes full.
- Need another wax pen and micro-motors. (Mark is using his own tools.) Linda will purchase these items.
- Casting class materials fees increase \$20 because of increased silver prices.

Faceting: Lyra Solochek

- Discussed purchasing new Calipers for Faceting.
- Faceting open shop (one machine) is available when there are classes.

Table Crafts: Linda Collins and Christy Gorrow

- Christy - No change in schedule.
- Linda – A couple signed up for wire wrapping.
- Do parent/child wire wrap/stringing classes on March 15th – \$15-\$20 per person.

Metal Clay:

- March 21 class full and April 25 class is filling.
- Metal clay has limited supplies – shortage due to low silver supply. Clay prices are also increasing.
- Lyra is getting certified for base metal clay.

New Business:

- Rental of 20' Storage Container -Ellen Sisco. Vote to approve the \$145/month, \$200 for pickup and \$200 delivery. Approved by board. To be delivered ASAP.
- Robert Campbell repaired the donated microscope. Discussed fee for Mineral ID. "Club Donation" \$30 per hour for valuation – open to public. At Show – Show Special: 3 rocks identified and valued for \$15 donation.
- SunBiz update – Ellen Sisco. Updated and current
- Club Shirts – Ellen is taking the logo patch to her daughter to do new shirts.

Christi Gorrow motioned to adjourn. Seconded by Lyra Solochek. Approved by all.

Meeting adjourned at 8:45 PM.

Next General Club Meeting: 3/7/26

Next Board Meeting : 4/14/26

Show Work Days: 3/14/26 and 3/28 (if needed)

Spring Show: 4/3/26 10:00 AM - 7:00 PM, 4/4/26 9:00 AM - 6:00 PM

ELECTED OFFICERS AND BOARD MEMBERS

Officers

Ellen Sisco, President**
Lyra Solochek, Vice President**
Linda Collins, Treasurer*
Cindy Britten, Secretary*

Board Members

Christy Gorrow* Kathy Reid*
Brenda Gregory* Patti Kepple**
Carlo Lucin** Milind Bhave**

*Term expires in 2027
**Term expires in 2026

Prepaid Shop Card still available

Buy one — or more — of the Prepaid Shop Cards (PSC) and use them as you visit the club for Open Shop. Write "PSC" under payment when you sign into Metal, Lapidary or Faceting Open Shops, then present your card to the monitor who will punch out the number of hours used.

The cards will come in three price points:

- 5 hours for \$30
- 10 hours for \$60
- 20+1 bonus for \$120.

These are approximately business card-size, easy to keep in your wallet. And there is no expiration date.

If you're interested, you can purchase them from club officers.

These prepaid cards are for only Metal, Faceting and Lapidary.

You can still pay for Open Shop by cash, PayPal or credit card if you prefer.



2026 February Treasurer's Report

	CHECKING	SAVINGS
Beginning Balance:	\$ 52,734.53	\$ 47,134.39
Ending Balance:	\$ 58,363.27	\$ 47,135.47
Income/Expenses:	<u><u>\$ (5,628.74)</u></u>	<u><u>\$ 1.08</u></u>

Income: Paypal, Sign-up Genius, Weekly Club Income, Mmbrshp Renewal

Sign-up Genius	\$ 1,899.80
Paypal Transfer	\$ 5,185.12
Stripe	\$ 2,102.40
Deposit	\$ 3,066.50
	<u><u>\$ 12,253.82</u></u>

Clubhouse Expenses - February 2026 \$ 6,625.08

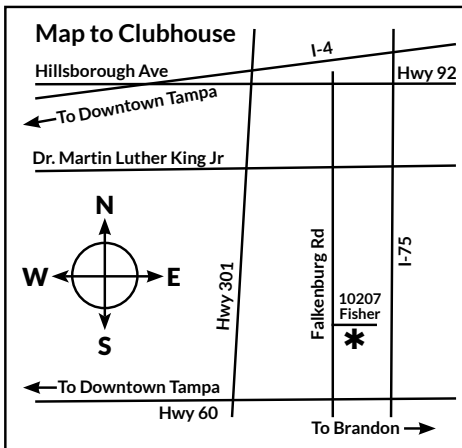
<i>Buildings/Grounds Expenses:</i>	<u><u>\$ 4,437.44</u></u>
T-Mobile Co. Phone	\$ 298.70
Teco-Nov/Dec	
Company Utilities	\$ 35.50
Daniel Burd - Lawn Care	\$ 400.00
ADT Security	
USA Kitchen & Bath - (Lapidary)	\$ 3,480.00
Carlo Lucin (Rock Pile in Jan)	\$ 223.24
<i>Operational Expenses:</i>	<u><u>\$ 586.73</u></u>
Auto Owners Insurance	-
Manatee Insurance	-
Philadelphia Indemnity-Accident	-
Lyra Solochek - chgs (possible Fraud)-reported	\$ 15.58
NIC-DOS Division	\$ 61.25
OBHAUS - Plant City - Miles	\$ 120.00
Publix - Co. Functions - C Bruce	\$ 316.85
Google Wrkspce	\$ 9.99
Insta Ink	\$ 8.59
Home Depot - Lapidary	\$ 47.26
Facebook	\$ 7.21

Tampa Bay Mineral and Science Club, Inc.

Membership Application

*Mandatory fields

Adult 1 Name*		Email*		Birth month	
Adult 2 Name*		Email*		Birth month	
Child (under 18)				Birth month	
Child (under 18)				Birth month	
Child (under 18)				Birth month	
Address					
City		State	ZIP		Phone*
Preferred form of contact*				Are you willing to receive your monthly newsletter by Email?	
<input type="checkbox"/> Email	<input type="checkbox"/> Text	<input type="checkbox"/> Phone		<input type="checkbox"/> Yes	<input type="checkbox"/> No
I hereby apply for membership for myself and others listed above, and agree not to hold any claims against the club.*				Referred by:	
Signature			Date		



Annual dues (January 1-December 31): \$50 individual, \$25 for each additional adult in the household, and \$5 for each child under 18.
Multi-year membership: \$180 individual for 4 years, \$90 per additional adult in household for 4 years
Lifetime membership: \$600 individual, \$300 per additional adult in household.

Make checks payable to "TBMSC" and mail with this application to 10207 Fisher Avenue, Tampa, FL 33619, or drop it off at the club house when you visit.

Clubhouse: 10207 Fisher Avenue, Tampa, FL 33619
Phone: (813) 684-2039
Website: www.tampabayrockclub.org
Regular membership meetings: 1st Saturday of Mar., June, Sept. and Dec.
Board meetings: 1st Monday of each month, 6:30 p.m.
Monthly Newsletter: The Coral Geode

The Tampa Bay Mineral and Science Club is a non-profit organization for the charitable and educational purposes of associating persons who are interested in natural science to work together as an organization in the gathering, displaying, and studying of rocks, shells, jewelry arts, and any kind of scientific objects of interest to the individual and the organization and to promote community interest in these subjects.

For Club Use

Cash or Check #	Amount	Receipt Done	Cards Done	Added to Mbr List	