

THE CORAL GEODE

DECEMBER 2025



Happy holidays

Let's celebrate some of our accomplishments from this year. Page 12



vecteezy.com

IN THIS ISSUE

- New members, 3
- Election results, 3
- Metal clay, 5
- Table crafts, 7
- Casting, 7
- Instructors, 7
- Lapidary 8
- Faceting 10
- Metal, 11
- Field trip, 16
- Bench Tips, 18
- Calendar, 19
- General meeting minutes, 20
- Board meeting minutes, 21

REMINDER: The club is closed Dec. 15, 2025 - Jan. 2, 2026.

TBMSC COMMITTEES

The Coral Geode newsletter:

Lyra Solochek, editor/designer

Show:

Lyra Solochek (chair), Brenda Gregory, Cindy Britten, Linda Collins

Membership:

Christy Gorrow, director

Social media

and advertising:

Lyra Solochek, Miles Bhave, Brenda Gregory

Webmaster:

Miles Bhave, Lyra Solochek

Field trip:

Carlo Lucin, chair

Program coordinator:

Lyra Solochek

Sunshine:

Brenda Gregory

Education/youth:

Cindy Britten

Landscape:

Brenda Gregory,
Carlo Lucin



We need shop monitors!

We have wonderful Lapidary and Metal Shop setups for our members to use. But we are unable to keep the facilities open without reliable monitors to supervise and ensure that machines are being used safely.

We especially need lapidary monitors to join the rotation on Tuesdays from 4-8 p.m. and Saturdays from 9 a.m.-1 p.m.

Volunteers will be compensated with metal or lapidary open shop hours when they log in as monitors (prerequisite qualifications must be met.).

To qualify to be a monitor, you must have:

- successfully completed the Beginning Cabochon class for Lapidary or Fundamentals of Silver for Metal Shop, or have clearance from the shop foreman.
- knowledge of how to operate machinery in the shop and be able to troubleshoot if problems arise.
- at least 6 months to 1 year experience actively cabbing or smithing.

If you are interested in helping out, please contact Linda Collins for metal shop at LCollins1953@gmail.com, and Lyra Solochek for lapidary shop at lyrasolochek@gmail.com.

ABOUT OUR CLUB



Address:

10207 Fisher Ave.,
Tampa, FL 33619



Email:

info@tampabayrockclub.org



Phone:

(813) 684-2039



Website:

tampabayrockclub.org



Calendar



Don't forget to renew your membership

Check out all the new and wonderful classes we have scheduled and all the upgrades that are completed and still to come in the clubhouse. Surely, you want to be part of this amazing season of change and opportunity. So, this is a subtle reminder that it's time to renew your membership. The cost has remained the same as last year; so it's \$50 for this first adult and \$25 each for additional adults. Youth memberships are also still \$5.

A few people have taken advantage of a 4-year membership for \$180 with the second adult being an additional \$90. And, the best offer for your dollar is a Lifetime membership for \$600. You can renew online at our website: tampabayrockclub.org

Or mail a check to TBMSC, 10207 Fisher Ave., Tampa, FL 33619. Or stop by the clubhouse on a Saturday between 10 a.m. and 1 p.m. to have me process your membership in person. I can take cash, check or credit card.

Hope to see you soon,

— Christy Gorrow, Membership

Election results are in

The votes are in, and we have unanimous approval of the slate of candidates presented by the Nomination Committee. They will be sworn in at the January Board Meeting.

Serving the next two years are:

- Treasurer — Linda Collins
- Secretary — Cindy Britten
- Board of directors

Christy Gorrow

Brenda Gregory

Kathy Reid

Congratulations to the elected leaders. And thank you all for casting your votes.



vecteezy.com

Prepaid Shop Card — a perfect stocking stuffer



Looking for a perfect holiday gift? Buy one — or more — of the Prepaid Shop Cards (PSC) and use them as you visit the club for Open Shop. Write "PSC" under payment when you sign into Metal, Lapidary or Faceting Open Shops, then present your card to the monitor who will punch out the number of hours used.

The cards will come in three price points:

- 5 hours for \$30
- 10 hours for \$60
- 20+1 bonus for \$120.

These are approximately business card-size, easy to keep in your wallet. And there is no expiration date.

If you're interested, you can purchase them from club officers.

These prepaid cards are for only Metal, Faceting and Lapidary.

You can still pay for Open Shop by cash, PayPal or credit card if you prefer.

Time to get creative for the T-shirt design contest



We need some new designs for our T-shirts, so we decided to ask our creative members to come up with some designs in a contest. The member with the best design wins a 1-year membership to the club.

Criteria:

- One color design. The shirts will likely be the usual blue.
- Includes the club logo.
- Includes one of these sayings approved by the membership last year.
 - Never take life for granite
 - Schist happens!

A finished design is preferred, but if you have a sketch of your idea, that will work as well.

Email your design entry to tbm-scsshow@gmail.com with the subject line of "T-shirt Contest." Submission deadline is January 31, 2026.

GUEST INSTRUCTOR

Mark your calendars! Chuck Bruce returns in February



Chuck Bruce from William Holland School of Lapidary Arts will be teaching three classes at the Tampa Bay Mineral and Science Club in February. Cost and signups will be announced on the website and in the January Geode.

Twisted Lapidary Workshop — February 19-20

This Class will focus on creating beyond cabochons. Students will be exposed to intarsia in a Zuni Sun Father Face. Students will acquire additional knowledge in the following:

- Doublets and triplets
- Stone cones
- Drilling into stones using diamond core bits
- Fit concave shaped stones with convex shaped stones
- Chip inlay into stones
- Make alternate cabs using dried natural items (butterfly or dragonfly wings etc. (using optical glues)
- Stabilization, custom tinting and a little hand carving



Fee includes projects for most techniques and will have extra kits for sale. Students will need to bring varied slabs of different hardness for projects.

Sterling Inlay Ring Workshop — February 21

This one-day class is a ring fabrication workshop, fabricating and completing two sterling silver rings. These ring bands can be used for the Inlay Workshop the following day.



Opal Inlay Ring Workshop — February 22

In this one-day workshop you will receive two stainless steel rings, one packet of synthetic opals and one packet of round opals to use in these channel rings. (If you attended the sterling ring class the previous day, you could use those fabricated rings for this class)

METAL CLAY

IMPORTANT:

Sign up before Monday, or we might have to reschedule

Metal clay artist Michael J. Marx is coming back to teach two classes in January, but only if we get a minimum number of students for *both* classes. The one-day “Turtle” class has met its requirement, but not the two-day “Owl” class, which needs at least three more. We’ve reduced the price of this class further as an added incentive. If you are going to sign up, please do so before **Monday, Dec. 15**, which is our deadline to get a headcount to determine if we need to reschedule his trip. Want to know more about Michael? Check out his bio on the next page. His classes are engaging and fun. He will also have many of his amazing pieces available for sale.

ONE-DAY CLASS: Friday, January 9

“Turtle With Stone” — a three-dimensional turtle using about 15 grams of silver clay with minimal tools, props and textures, with a cold-set stone. (You supply the stone, approximately 20mm to 22mm round. Cabochons will also be for sale at class.) This class is suitable for new and intermediate clay artists.

[Click here to sign up](#)

Cost: \$345 total.

- \$134 deposit to reserve seat on SignUp Genius.
- \$211 Instructor fee and materials (includes 15g of clay) due the day of class. Extra clay may be purchased.
- Morning snack and lunch provided.



SIGN UP TODAY!

TWO-DAY CLASS: Saturday, January 10-Sunday, January 11

“Awesome Owls” — a three-dimensional owl using 30-plus grams of silver clay with layered textures, coil work and multiple embellishments. This class is catered toward intermediate to advanced skill levels and requires a full tool kit, textures and some props.

[Click here to sign up](#)



Cost: **Reduced to \$550 total.** Additional \$25 off if you’re also taking the Turtle class

- \$250 deposit to reserve a seat on SignUp Genius
- \$300 Instructor and materials fee due the day of class. Includes 30g of clay. Extra clay may be purchased.
- Morning snacks and lunches provided.

Minimum number of students has not yet been met. If you plan to take this class, please sign up before Monday, Dec. 15, so we can get a head count to make sure we meet the minimum requirement.

Please make sure your membership is current. Non-members may purchase a weekend pass for \$30. For more information, contact Lyra Solochek at lyrasolochek@gmail.com.

METAL CLAY



About Michael J. Marx

From his website unsaneart.com

I have been a sculptor and artist as long as I can remember. My childhood gifts were art supplies as often as they were toys or books.

I was born in Massachusetts in 1969 and lived there for 18 years, before becoming a born-again Californian in 1987. I lived in the Bay Area for 33 years before recently relocating to Fort Mill, South Carolina.

In the beginning, I sculpted in FIMO, a polymer clay, and this honed my ability to transform my visions into 3-D images. In 2000, I took my first PMC (precious metal clay) class and was hooked. PMC's affinity for texture, flexibility of form, and choices of finishing techniques make it ideal for me as an artist. The combinations of fine detail, high texture and varied forms are not easily achieved using traditional methods of casting and fabrication.

While my main focus is making wearable sculpture, I also work in mixed-media. I have Level 1 and 2 certifications from PMC Connection as well as Level 101 and 201 certifications from Camp Metal Clay.

Only 3 seats left

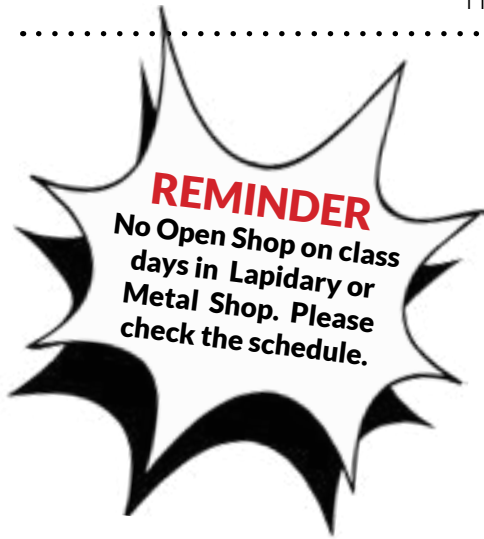
Introduction to Metal Clay

10 a.m.-4 p.m. Dec. 13

Do you want to take Michael J. Marx's classes, but you've never done metal clay before? No problem. This class will introduce you to the basic techniques of the craft so you can get some experience before the guest instructor arrives in January. Learn how to roll, texture, shape and cut metal clay. Also find out how to care for and rehydrate clay, refine shapes, fire and finish your pieces. This is an intensive one-day workshop. 20-plus grams of fine silver clay and findings needed for the projects are included in the price of the class. Tools are available to borrow. Bring a lunch. TBMSC Fee: \$40 deposit to reserve a seat. Instructor and Materials Fee: \$160 payable by check or cash on the day of the class.

**Click here
to sign up**





INSTRUCTOR LIST

Linda Collins

LCollins1953@gmail.com
Cold Connections, Wire Wrapping, Lapidary, Silver, Metal Shop foreman

Christy Gorrow

cgorrow@juno.com
Beading, Kumihimo, Viking Knit, Chaining and Intarsia

Jim Kammel

jmkammel@gmail.com
Faceting foreman and instructor

Mark Lauer

mdl3153@aol.com
Casting

Lisa Miller

meggymoo65@gmail.com
Silver

Lyra Solochek

lyrasolochek@gmail.com
Lapidary foreman and instructor, Metal Clay foreman and instructor

Jojo Torres

ceramics.johannatorres@gmail.com
Lapidary

Leah Welch

5324welch@gmail.com
Intarsia and Lapidary

TABLE CRAFTS

Beads, wires on Wednesdays

Table Crafts continues to meet on Wednesdays. We have an afternoon session from 1-4 p.m., and an evening session from 6-9 p.m. By offering two times, I hope that fits into your schedule.

Table Crafts offers a variety of jewelry making techniques: Beading of all types (Peyote, Brick, Herringbone, Square, as well as stringing), Kumihimo, Viking Knit, and Chaining. If you're not familiar with these processes, stop by and see what we're doing, plus see some examples. Right now most of my students are working on individual projects, so I would have time to start a new student on any technique.

Here's a couple pictures of what has been done recently. The Turkey earrings are brick stitch and the 3D star is a combination of peyote and herringbone stitches.

We'll be meeting on Dec. 10 then taking the holidays off and will start up again on Jan. 7.

You can reach me at cgorrow@juno.com.

— Christy Gorrow



CASTING

Intro to wax carving and silver centrifuge casting

January 17-18

February 14-15

This two-day class begins on the morning of Day 1 with an introduction to wax carving, where you'll create

**Click here
to sign up**



a freeform ring. In the afternoon, you'll learn how to set up a plaster of Paris mold.

This mold will be

placed in the kiln at the end of the day for burnout overnight.

On Day 2, you'll cast your ring in sterling silver and explore various methods to finish and polish your piece. Previous experience in silver classes is strongly recommended.

The fee for the class is \$230, which includes all materials, instructor fee, and shop time. A deposit of \$130 is required to reserve your spot, with the remaining \$100 payable to the instructor on the day of the class.



LAPIDARY



Let's review the Lapidary Shop rules

- You must be a member, and have a shop pass (by completing a Beginning Cabochon class, or with shop foreman approval.)
- All members must sign in and sign out when using the Shop.
- Loose clothing, long hair, ties, dangling jewelry, scarves, etc., must be secured or tied up to prevent them from being caught in rotating machines. Closed-toe shoes only. No sandals.
- Dop sticks stay in the shop. Do not take them home with you.
- Cabs must be preformed on the metal wheels with no sharp edges before going to the resin wheels 280 and up. This is to prevent them from getting gouged and ruined.
- Make sure you work the cabs through the grits in sequence. Finish one level completely before moving on.
- Nothing harder than 7.5 on the Mohs scale. No rubies or corundum.
- Only work on stones, crystals or glass. No metal, wood, ceramics, resin, amber or plastic.
- Prohibited Materials: Pyrite, Psilomelane, shells and bones, Bumblebee Jasper, and other toxic or radioactive materials. Fossilized shells are allowed. When in doubt, ask the monitor or instructor.
- The diamond grinding wheels are not to be used for large rock; they are for cabochon grinding use only.
- The shop is for personal projects only. No commercial or mass production.
- Do not bring a batch of cabs for polishing only.
- Clean the work area after use. The last 15 minutes before the end of your session should be dedicated to cleaning up.
- Harassment, intimidation, or any disruptive behavior is not tolerated.
- Violating these shop rules, repeatedly misusing equipment or ignoring instructor/monitor warnings may result in suspension or permanent banishment from the Lapidary Shop.

Beginning Cabochon class

- 10 a.m.-2:30 p.m. Jan. 13, 14, 20, 21 (Leah)
- 9 a.m.-5:30 p.m. Jan. 17-18 (Lyra)
- 9 a.m.-5:30 p.m. March 21-22 (TBA)
- 9 a.m.-5:30 p.m. April 18-19 (TBA)

This workshop covers the basics of turning slabs of rocks into polished pieces.

The cost of the class is \$230, which includes materials, instructor fees and shop time. A deposit of \$130 is required to save a spot, and the balance of \$100 should be paid to the instructor the day of the class. You must wear closed-toed shoes. No loose clothing, and long hair must be tied back. Bring a waterproof apron, an Optivisor/magnifier, a large towel and lunch.

Click here to sign up



Lapidary Open Shop Reservations

Members who completed the Beginning Cabochon class may use equipment in the Lapidary Shop during Open Shop. You must present your shop pass to the monitor when you sign in. If you do not have a card, ask the monitor or shop foreman for one. If you have previous cabbing experience, but did not take the Beginning Cabochon class, talk to the shop foreman for a Skills Check to get your shop pass. You must be a current member to use club facilities. Cost is \$6 per hour. PayPal, credit card, Prepaid Shop Card or exact change only. Please pay the shop monitor or club staff before you leave.

Click here to sign up



LAPIDARY

Lapidary students in November



FACETING

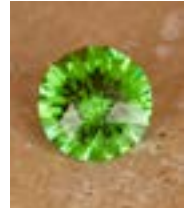
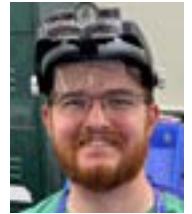
Congratulations to faceter Brian Floyd

Club member Brian Floyd entered the U.S. Faceting Guild's Single Stone Competition for 2025 and finished the Novice Category with flying colors.

His stones also have been featured on the cover of the guild's newsletters.

Shown on the right are some more of his stones.

Brian got his start in faceting with TBMSC classes back in 2024, and has been successful since. Great job, Brian!



You, too, can learn to facet beautiful gemstones

Beginning Faceting

8 a.m.-3 p.m. Dec. 13-14

8 a.m.-3 p.m. Jan. 17-18

9 a.m.-3 p.m. Feb. 7-8

This is a two-day class on cutting faceted gemstones (transparent stones similar in appearance to diamonds). You will learn how to choose cutting material, dop the stone, cut and polish facets, transfer a stone, and proper operation and care of a faceting machine. Each student will complete one stone.



Click here to sign up



Cost is \$230 total, which includes materials, instructor fee, club shop time and use of machines. A deposit of \$130 is required to reserve a seat. The balance of \$100 should be paid directly to the instructor on the first day of class.

Each student should have his/her own Optivisor to closely examine the stone during the cutting process. These are available on Amazon or Harbor Freight. You must wear closed-toed shoes. No loose clothing, and long hair must be tied back.

METAL SHOP

Silversmithing 1.1: Introduction to Silversmithing

- 9 a.m. to 2 p.m. Jan. 10 (Full)

The first class of the Fundamentals of Silversmithing Course is a five-hour class where the student will create a textured sterling silver ring band. The basics of metalsmithing will be covered, including shop etiquette and safety, how to use jewelry tools, soldering, finishing. Cost: \$78* Materials and the use of tools are included in the cost. (*Materials cost is subject to change based on market prices.) Deposit of \$33 on Signup Genius required to reserve a seat. Pay the balance of \$45 to the instructor. Students must bring own Optivisor. Closed-toed shoes required.

**Click here
to sign up**



No loose clothing; long hair must be tied back. Contact instructor Lisa Miller at meggymoo65@gmail.com or 772-631-1405 for more information about the Fundamentals of Silversmithing Course.



Silversmithing 1.2: Split-shank ring

- 9 a.m.-1 p.m. Jan. 11 and 31

In the second class of the Fundamentals of Silversmithing Course, the student will make a split-shank ring with a stone in it. This class consists of two four-hour classes.

**Click here
to sign up**



Cost: \$141* Materials and the use of tools are included in the cost. (*Materials cost is subject to change based on market prices.)

Deposit of \$52 on Signup Genius required to save a seat.

Prerequisite: Must have completed Silver 1.1.

Students must bring own Optivisor. Closed-toe shoes required. No loose clothing; long hair must be tied back. Contact instructor Lisa Miller at meggymoo65@gmail.com or 772-631-1405 for more information about the Fundamentals of Silversmithing Course.



Metal Open Shop Reservations

**Click here
to sign up**



Members who completed the Beginning Silver course may use the Metal Shop during Open Shop hours. You must present your shop pass to the monitor when you sign in. If you do not have a card, ask the monitor or shop foreman for one. If you have previous smithing experience, but did not take the Beginning class, talk to the shop foreman for a Skills Check to get your shop pass. You must be a current member. Cost is \$6 per hour. PayPal, credit card or exact change only. Or purchase a pre-paid shop card in three different increments.

YEAR IN REVIEW

A look back at an exciting year

We've accomplished so much this year. We're delighted to see so many new faces, learning new skills and creating beautiful gems and jewelry.



YEAR IN REVIEW



YEAR IN REVIEW



YEAR IN REVIEW



FIELD TRIP

Hunting for amazing local druzies and fossils

Members enjoyed a beautiful November day to hunt for Tampa Bay corals during a field trip led by Matthew Stellon. The rockhound with the best find — Rebecca Anderson — received a prize for her stunning black druzi coral. If you missed this opportunity, don't worry. We'll schedule another trip in early 2026.



Scenes from the holiday potluck



Brad's Bench Tips

By Bradford Smith

Removing solder from a bezel

Sometimes when you solder a bezel to a base plate you end up with excess solder that needs to be removed before setting the stone. My choice of a tool bit for this is an "Inverse Cone" bur used in a motor tool or flexshaft.

The nice thing about this bur is that it cuts on the bottom and the side and is shaped so that there's less chance of it cutting into the bezel wall than if you used the more common cylinder bur shape. I find the 2 mm size useful for almost any bezel.

There are hundreds of different tool tips for your Dremel or Foredom. Get Brad's guide on choosing the best one for the job at amazon.com/dp/B074LG35ZV



"24 Easy Metal Textures" - With No Rolling Mill Required

It details 24 different techniques for adding texture to your jewelry and metal work without the need for heavy equipment like a mill. The techniques make use of more tools and materials around the shop — like hammers, stamps, punches and tool bits for the Dremel or Foredom.

Each technique is explained in detail with:

- Description and pictures of the technique
- Procedures for creating the texture
- List of tools and supplies needed
- Options for modifying and personalizing

These methods are both useful and practical. I use them in my own work, and I teach them to others in classes and workshops. What's more is they're practical. None should put a dent in your budget.

Copies are available now at <https://amazon.com/dp/B0B-PGPTBNH/>



Smart Solutions for Your Jewelry Making Problems

Click to see all of Brad's books on amazon.com/author/bradfordsmith



CALENDAR



vecteezy.com

GENERAL CLUB HOURS

Tuesday: 4-8 p.m.

Thursday: By appointment

Saturday: 9 a.m.-1 p.m.

CLASSES, OPEN SHOP AND EVENTS

Tuesday, December 9, 2025

4 p.m. - 8 p.m. Lapidary Open Shop
4 p.m. - 8 p.m. Metal Open Shop

Wednesday, December 10, 2025

1 p.m. - 4 p.m. TABLE CRAFTS
6 p.m. - 9 p.m. TABLE CRAFTS

Saturday, December 13, 2025

8 a.m. - 3 p.m. FACETING, DAY 1
9 a.m. - 3:30 p.m. INTRO TO METAL CLAY
No Lapidary Open Shop

Sunday, December 14, 2025

8 a.m. - 3 p.m. FACETING, Day 2

December 15, 2025, to January 2, 2026

CLUB CLOSED FOR HOLIDAYS

Saturday, January 3, 2026

9 a.m. - 1 p.m. Lapidary Open Shop
9 a.m. - 1 p.m. Metal Open Shop

Monday, January 5, 2026

6:30 p.m. TBMSC Board Meeting

Tuesday, January 6, 2026

4 p.m. - 8 p.m. Lapidary Open Shop
4 p.m. - 8 p.m. Metal Open Shop

Wednesday, January 7, 2026

1 p.m. - 4 p.m. TABLE CRAFTS
6 p.m. - 9 p.m. TABLE CRAFTS

Friday, January 9, 2026

9 a.m. - 5:30 p.m. METAL CLAY:
MICHAEL MARX TURTLES

Saturday, January 10, 2026

9 a.m. - 5:30 p.m. ADV METAL CLAY:
MICHAEL MARX OWLS, Day 1
9 a.m. - 1 p.m. Lapidary Open Shop
9 a.m. - 2 p.m. SILVER 1.1

Sunday, January 11, 2026

9 a.m. - 5:30 p.m. ADV METAL CLAY:
MICHAEL MARX OWLS, Day 2

Tuesday, January 13, 2026

10 a.m. - 2:30 p.m. BEGINNING
CABOCHON (weekday), Day 1
4 p.m. - 8 p.m. Lapidary Open Shop
4 p.m. - 8 p.m. Metal Open Shop

09281965 Wednesday, January 14, 2026

10 a.m. - 2:30 p.m. BEGINNING
CABOCHON (weekday), Day 2
1 p.m. - 4 p.m. TABLE CRAFTS
6 p.m. - 9 p.m. TABLE CRAFTS

Saturday, January 17, 2026

8 a.m. - 3 p.m. FACETING, DAY 1
9 a.m. - 5:30 p.m. BEGINNING
CABOCHON, Day 1
9 a.m. - 5:30 p.m. CASTING, Day 1
No Open Shops

Sunday, January 18, 2026

8 a.m. - 3 p.m. FACETING, Day 2
9 a.m. - 5:30 p.m. BEGINNING
CABOCHON, Day 2
9 a.m. - 5:30 p.m. CASTING, Day 2

Tuesday, January 20, 2026

10 a.m. - 2:30 p.m. BEGINNING
CABOCHON (weekday), Day 3
4 p.m. - 8 p.m. Lapidary Open Shop
4 p.m. - 8 p.m. Metal Open Shop

Wednesday, January 21, 2026

10 a.m. - 2:30 p.m. BEGINNING
CABOCHON (weekday), Day 4
1 p.m. - 4 p.m. TABLE CRAFTS
6 p.m. - 9 p.m. TABLE CRAFTS

Saturday, January 24, 2026

9 a.m. - 1 p.m. Lapidary Open Shop
9 a.m. - 1 p.m. SILVER 1.2, Day 1

Tuesday, January 27, 2026

4 p.m. - 8 p.m. Lapidary Open Shop
4 p.m. - 8 p.m. Metal Open Shop

Wednesday, January 28, 2026

1 p.m. - 4 p.m. TABLE CRAFTS
6 p.m. - 9 p.m. TABLE CRAFTS

Saturday, January 31, 2026

9 a.m. - 1 p.m. Lapidary Open Shop
9 a.m. - 1 p.m. SILVER 1.2, Day 2

Monday, February 2, 2026

6:30 p.m. TBMSC Board Meeting

Tuesday, February 3, 2026

4 p.m. - 8 p.m. Lapidary Open Shop
4 p.m. - 8 p.m. Metal Open Shop

Wednesday, February 4, 2026

1 p.m. - 4 p.m. TABLE CRAFTS
6 p.m. - 9 p.m. TABLE CRAFTS

Saturday, February 7, 2026

8 a.m. - 3 p.m. FACETING, DAY 1
9 a.m. - 1 p.m. Lapidary Open Shop
9 a.m. - 1 p.m. Metal Open Shop
1 p.m. - 5 p.m. ADVANCED CABOCHON: HEARTS

Sunday, February 8, 2026

8 a.m. - 3 p.m. FACETING, Day 2

Tuesday, February 10, 2026

4 p.m. - 8 p.m. Lapidary Open Shop
4 p.m. - 8 p.m. Metal Open Shop

Wednesday, February 11, 2026

1 p.m. - 4 p.m. TABLE CRAFTS
6 p.m. - 9 p.m. TABLE CRAFTS

Saturday, February 14, 2026

9 a.m. - 5:30 p.m. CASTING, Day 1
9 a.m. - 1 p.m. Lapidary Open Shop

Sunday, February 15, 2026

9 a.m. - 5:30 p.m. CASTING, Day 2

Tuesday, February 17, 2026

4 p.m. - 8 p.m. Lapidary Open Shop
4 p.m. - 8 p.m. Metal Open Shop

Wednesday, February 18, 2026

9 a.m. - 5:30 p.m. CHUCK BRUCE:
ZUNI MASK, Day 1

Friday, February 20, 2026

9 a.m. - 5:30 p.m. CHUCK BRUCE:
ZUNI MASK, Day 2

Saturday, February 21, 2026

9 a.m. - 5:30 p.m. CHUCK BRUCE:
SILVER INLAY RING
No Open Shops

Sunday, February 22, 2026

9 a.m. - 5:30 p.m. CHUCK BRUCE:
OPAL INLAY RING

Tuesday, February 24, 2026

4 p.m. - 8 p.m. Lapidary Open Shop
4 p.m. - 8 p.m. Metal Open Shop

Wednesday, February 25, 2026

1 p.m. - 4 p.m. TABLE CRAFTS
6 p.m. - 9 p.m. TABLE CRAFTS

Saturday, February 28, 2026

9 a.m. - 1 p.m. Lapidary Open Shop
9 a.m. - 1 p.m. Metal Open Shop

Monday, March 2, 2026

6:30 p.m. TBMSC Board Meeting

TBMSC General Membership Minutes

December 6 , 2025

11:45 a.m. Call to order

Motion to approve September general membership meeting minutes, approved

Building update, Ellen Sisco

- Outdoor work completed includes driveway paving, mulching of plant beds.
- Indoor work completed includes ADA compliant doorways on silver, lapidary entries.
- Additional work will continue, including emptying the building in advance of finishing the flooring. The work is expected to take place in early spring. Volunteers are needed to help pack and remove items from the building.

Department updates

- Silver, Linda Collins — the next open class for silversmithing is in February. Machinery updates are in the works
- Lapidary, Lyra Solochek — Classes are taking place monthly both on weekends and weekdays. There are openings for classes in January.
- Faceting, Lyra Solochek — All classes are full for the next couple of months.
- Metal clay, Lyra Solochek — Spaces are available for the introductory class on Dec 13. This class will help prepare anyone interested in taking classes by guest instructor Michael Marx in January.
- Casting, Mark Lauer — The introductory casting class is ready to launch. The January class is filled, but space is open for February and March. The class is limited to two people initially, but is expected to expand to four in the future.
- Tablecrafts, Christy Gorrow — Lessons are running on Wednesdays. If anyone is interested in other times or days, contact Christy to set up.
- Wire wrapping, Linda Collins — Participation has been low. Time for open shop and classes is being arranged for Sundays and one weekday to be determined.

Other business

- The club will be closed from Dec. 15 through Jan. 2 for the winter holidays.
- Annual memberships expire at the end of 2025. Contact Christy Gorrow to renew.
- Board elections were conducted for leadership positions. Elected unanimously and without opposition to new two-year terms were Linda Collins, treasurer; Cindy Britten, secretary; and Christy Gorrow, Brenda Gregory and Kathy Reid, board members.

Spring show update, Lyra Solochek

- The spring show is being planned for the first weekend of April 2026. Because the Sunday of that weekend is Easter, the fairgrounds will not be available on that day. The club is planning to run the two-day show on Friday and Saturday, with extended hours. Details are still being worked out.
- The club wants to have new T-shirts for the show. The sayings were selected a year ago. The club is accepting members' design proposals.

Website, Miles Bhav

The club website is being updated with a new look and new functions. It should be ready to launch in early 2026.

12:15 p.m. adjourned

TBMSC Board Meeting Minutes

December 1, 2025

Present: Lyra Solochek, Linda Collins, Cindy Britten, Kathy Reid, Brenda Gregory, Miles Bhavé, Christy Gorrow, Carlo Lucin

Absent: Ellen Sisco, Patti Kepple

Call to Order @ 6:31 by Lyra Solochek

- Approval of minutes from November meeting. Motion to approve Linda Collins. Seconded by Kathy Reid. Approved by all.
- Treasurer's Report – Linda Collins. Discussed show income and operational expenses. Motion to approve Treasurer's Report by Christy Gorrow. Seconded by Brenda Gregory. Approved by all.
- Show Report – Linda Collins/Lyra Solochek. April 2026 show – will be on Easter Weekend. Our Gem Show will have to be Friday and Saturday, as the venue is not available on Sunday. Discussion on dropping the free parking and reducing our entry fee. Will also check about having a shuttle service. Planning on sending out vendor contracts in December after signing a contract with the fairgrounds.

Old business

- Election in progress – Lyra Solochek; Online voting closes on Dec. 5. In-person voting will be at the members meeting on Dec. 6. Winners will be announced at the quarterly members meeting.
- December Members Meeting/holiday potluck – Lyra Solochek. Tailgate starts at 9 a.m., meeting at 11:45 a.m. and then pot luck lunch and raffles. Discussed how to do raffle/different levels of raffle.
- New website coming soon – Miles Bhavé. Stripe is the new finance platform. The tentative plan is to go live in January. Board will preview/use platform first to work out 'bugs'. Motion to approve operating cost of new website platform made by Linda Collins. Seconded by Kathy Reid. Approved by all.

Department updates

- Lapidary – Lyra Solochek. December classes canceled due to no signups.
- Faceting – Lyra Solochek. Need some new laps.
- Metal Clay – Lyra Solochek. First class last week, next in December. Michael Marx classes – 1-day class is filled; 2-day class has not met minimum attendees. Will discount the 2-day class fee further in hopes of getting more people..
- Casting – Lyra Solochek. Set to go – No sign ups for December so likely will cancel. January class limited to 2 students. Discussion on ways to protect work surfaces in metal shop when carving wax.
- Silver – Linda Collins. Lisa will resume classes in January. Chuck's class for next year. 2 classes will be lapidary only; others will be synthetic dichroic; butterfly wings; optical class (doublets and triplets) materials; one will be building an inlay ring frame.
- Table crafts – Christy Gorrow and Linda Collins. Start classes January 3. Myuki Sample Cards will be here in January.
- Membership – Christy Gorrow. Renewal time again. Post in December Geode.
- Building/landscaping: Teco lights – Cindy Britten. Another repair ticket was sent to line department to string wire from light to pole.

New business

- Club closed for the holidays from December 15 until January 2, 2026
- Proposal by Linda Collins to purchase metal shop equipment from Mitchell Jewelry. Motion to approve purchase made by Cindy Britten. Seconded by Kathy Reid,. Approved by all.

Continued on next page

Continued from previous page

- Department budgets: revisit purchasing and keeping track of budget. Suggestion that the department heads will make the purchases instead of a central purchaser. The treasurer will track department budgets. There will be a spreadsheet for department heads to view. There will be an email account for the treasurer to receive receipts for department spending.
- Meetup effectiveness: Doesn't seem to be effective; will discontinue subscription
- Purchasing hard-top tables for main room: Lyra Solochek brought up the need for sturdier tables for class activities. Motion to approve purchase of two tables with wooden tops made by Linda Collins. Seconded by Kathy Reid. Approved by all.
- Discussion of rocks in display cases being cataloged and boxed in preparation for clearing out building for new flooring

Meeting adjourned at 9:10PM: Motion to adjourn Brenda Gregory. Seconded by Carlo Lucin. Approved by all.
Next Board Meeting January 5, 2026.
Tailgate/Member Meeting December 6, 2025

ELECTED OFFICERS AND BOARD MEMBERS

Officers

Ellen Sisco, President**
Lyra Solochek, Vice President**
Linda Collins, Treasurer*
Cindy Britten, Secretary*

Board Members

Christy Gorrow*
Brenda Gregory*
Carlo Lucin**
Kathy Reid*
Patti Kepple**
Milind Bhavé**

*Term expires in 2027
**Term expires in 2026



2025 November Treasurer's Report

	CHECKING	SAVINGS
Beginning Balance:	\$ 32,648.83	\$ 47,130.83
Ending Balance:	\$ 41,993.90	\$ 47,131.99
Income/Expenses:	<u><u>\$ (9,345.07)</u></u>	<u><u>\$ 1.16</u></u>

Income: Paypal, Sign-up Genius, Weekly Club Income, Mmbrshp Renewal

Sign-up Genius	\$ 1,506.05
Paypal Transfer	-
Deposit	\$ 2,000.00
Deposit -Nov Show	\$ 7,836.00
	<u><u>\$ 11,342.05</u></u>

Clubhouse Expenses - October 2025 \$ 1,996.98

Buildings/Grounds Expenses:

	<u><u>\$ 159.69</u></u>
T-Mobile Co. Phone	\$ 124.35
Teco	
Company Utilities	\$ 35.34
Daniel Burd - Lawn Care	
ADT Security	

Operational Expenses:

	<u><u>\$ 456.55</u></u>
Auto Owners Insurance	-
Manatee Insurance	-
Philadelphia Indemnity-Accident	-
Lyra Solochek - Geode	
Amazon - Marketplace	\$ 30.95
Amazon - Marketplace	\$ 38.69
Amazon - Marketplace	\$ 54.70
Keys for cash box	\$ 16.13
Google Wrkspace	\$ 9.99
Insta Ink	\$ 8.59
DOS License	\$ 297.50

Trade Show Expenses:

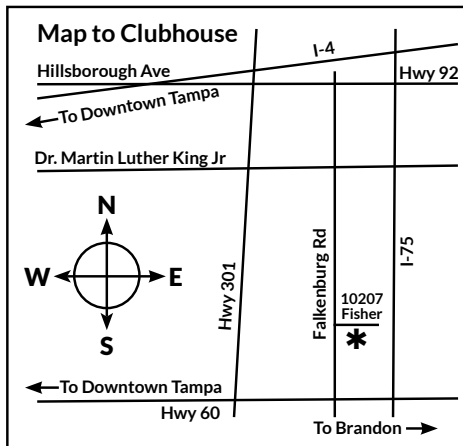
	<u><u>\$ 1,380.74</u></u>
Door Prize for Show	\$ 200.00
Dunkin donuts-show refreshments	\$ 105.94
College Hunks - Movers	\$ 591.44
OBHAUS - Plant City - Miles	\$ 351.49
Facebook	\$ 121.62
USPS PO (Grand Prize)	\$ 10.25

Tampa Bay Mineral and Science Club, Inc.

Membership Application

*Mandatory fields

Adult 1 Name*		Email*	Birth month
Adult 2 Name*		Email*	Birth month
Child (under 18)			Birth month
Child (under 18)			Birth month
Child (under 18)			Birth month
Address			
City	State	ZIP	Phone*
Preferred form of contact*			Are you willing to receive your monthly newsletter by Email?
<input type="checkbox"/> Email <input type="checkbox"/> Text <input type="checkbox"/> Phone			<input type="checkbox"/> Yes <input type="checkbox"/> No
I hereby apply for membership for myself and others listed above, and agree not to hold any claims against the club.*			Referred by:
Signature		Date	



Annual dues (January 1-December 31): \$50 individual, \$25 for each additional adult in the household, and \$5 for each child under 18.
Multi-year membership: \$180 individual for 4 years, \$90 per additional adult in household for 4 years
Lifetime membership: \$600 individual, \$300 per additional adult in household.

Make checks payable to "TBMSC" and mail with this application to 10207 Fisher Avenue, Tampa, FL 33619, or drop it off at the club house when you visit.

Clubhouse: 10207 Fisher Avenue, Tampa, FL 33619
Phone: (813) 684-2039
Website: www.tampabayrockclub.org
Regular membership meetings: 1st Saturday of Mar., June, Sept. and Dec.
Board meetings: 1st Monday of each month, 6:30 p.m.
Monthly Newsletter: The Coral Geode

The Tampa Bay Mineral and Science Club is a non-profit organization for the charitable and educational purposes of associating persons who are interested in natural science to work together as an organization in the gathering, displaying, and studying of rocks, shells, jewelry arts, and any kind of scientific objects of interest to the individual and the organization and to promote community interest in these subjects.

For Club Use

Cash or Check #	Amount	Receipt Done	Cards Done	Added to Mbr List	
-----------------	--------	--------------	------------	-------------------	--