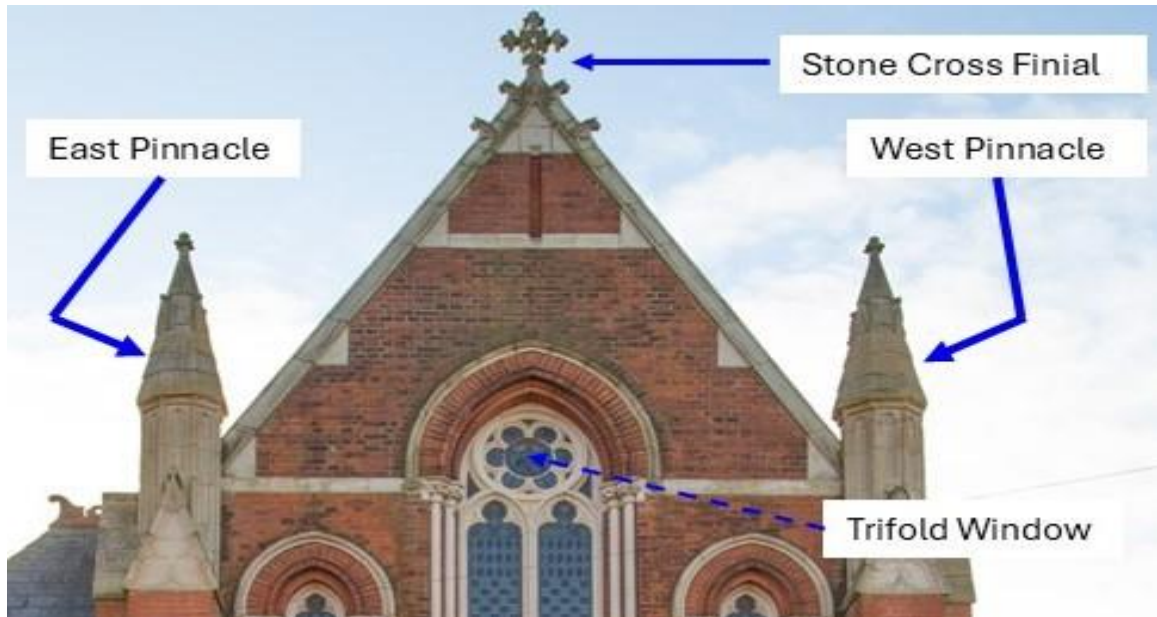


Our Lady and St Peter's Church, Bridlington

North Elevation (Street Facing) - Pinnacles, Stone Cross Finial & Trifold Window Repairs



The above photo shows the upper part of the north elevation of the church, with items of concern arrowed. The Diocesan Quinquennial report, carried out in November 2022, identified the items arrowed as requiring further investigation due to age and visible weathering, creating concern for the stability of the pinnacles & other stonework. Following further inspections, using powerful lenses, the parish obtained quotations for access scaffold, close inspection and repairs, based on what was visible. A contract was subsequently awarded for the works.

Pinnacles



Photo1 – Top of west pinnacle the finial after cleaning, 3 cracks clearly visible.



Photo 2 – East pinnacle finial showing similar cracking as west. NB Finial is top decorative part

After Thermatec cleaning, to remove algae growth, pollution deposits (sulphur), paint & mastic, it was clear that cracking had propagated into the stone below the finial in both pinnacles, requiring these stones to be dismantled.



Photo 3 Extent of erosion at joints hand showing depth of weathering

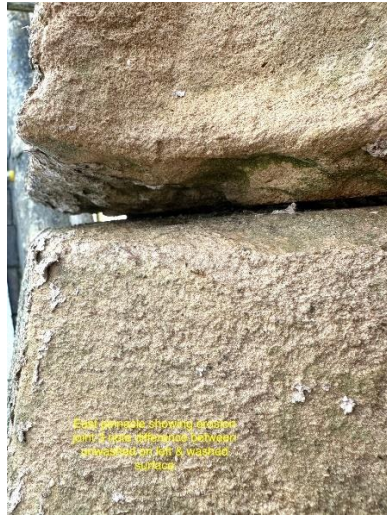


Photo 4 Weathering at joint



Photo 5 Underside of finial, extent of cracking to core clearly visible

Stone Cross Finial



Photo 6 South face of Cross red arrow showing position of detail



Photo 7 Detail of cracking in Cross base



Photo 8 further detail of cracking



Photo 9 Cross after removal – note half of base (arrowed) fell away when cross lifted

Trifold Window – Centre Circle



Photo 10 Circular Stained-Glass window found bowed inwards & at risk of failure

Roofing Defects – Accessible from Scaffolding



Photo 11 Apex of roof lead flashing incomplete



Photo 12 Missing lead flashing flashing.



Photo 13 Apex Cresting not bedded in mortar

The opportunity was taken to rectify a number of roof defects while access was available from the scaffold built to repair the pinnacles.

New Pinnacles



Photo 14 2nd Stones ready to be installed



Photo 15 New Finial in workshop

The new Finials were each carved from new larger stones to increase length of piece enhance base area at mounting to 2nd stone. Increased area improves stability and reduces risk of cracking. Existing defects removed. 2nd stone length reduced to maintain pinnacle original height and shape. All pinnacle joints raked out and renewed with lime-based mortar. Finally, each pinnacle was given a layer of Sheltercoat, a conserving product enhancing the appearance and resistance to weathering of the stonework.

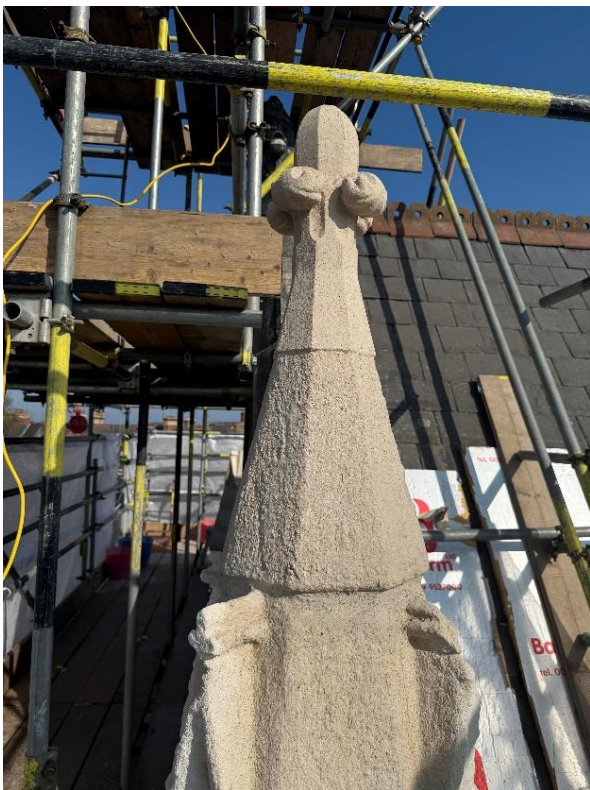


Photo16 Rebuilt Pinnacle showing new carved finial (Top section), note filled joints & Sheltercoat



Photo 17 Rebuilt Pinnacle from other side

New Stone Cross Finial

As can be seen in photos 6 through 9 the Stone Cross was found to be seriously compromised. However, matching new stone material has been obtained and shaping (carving) begun. Due to the need to recreate the detail & complexity of the original, the work is expected to take about two weeks to complete and is an additional cost.