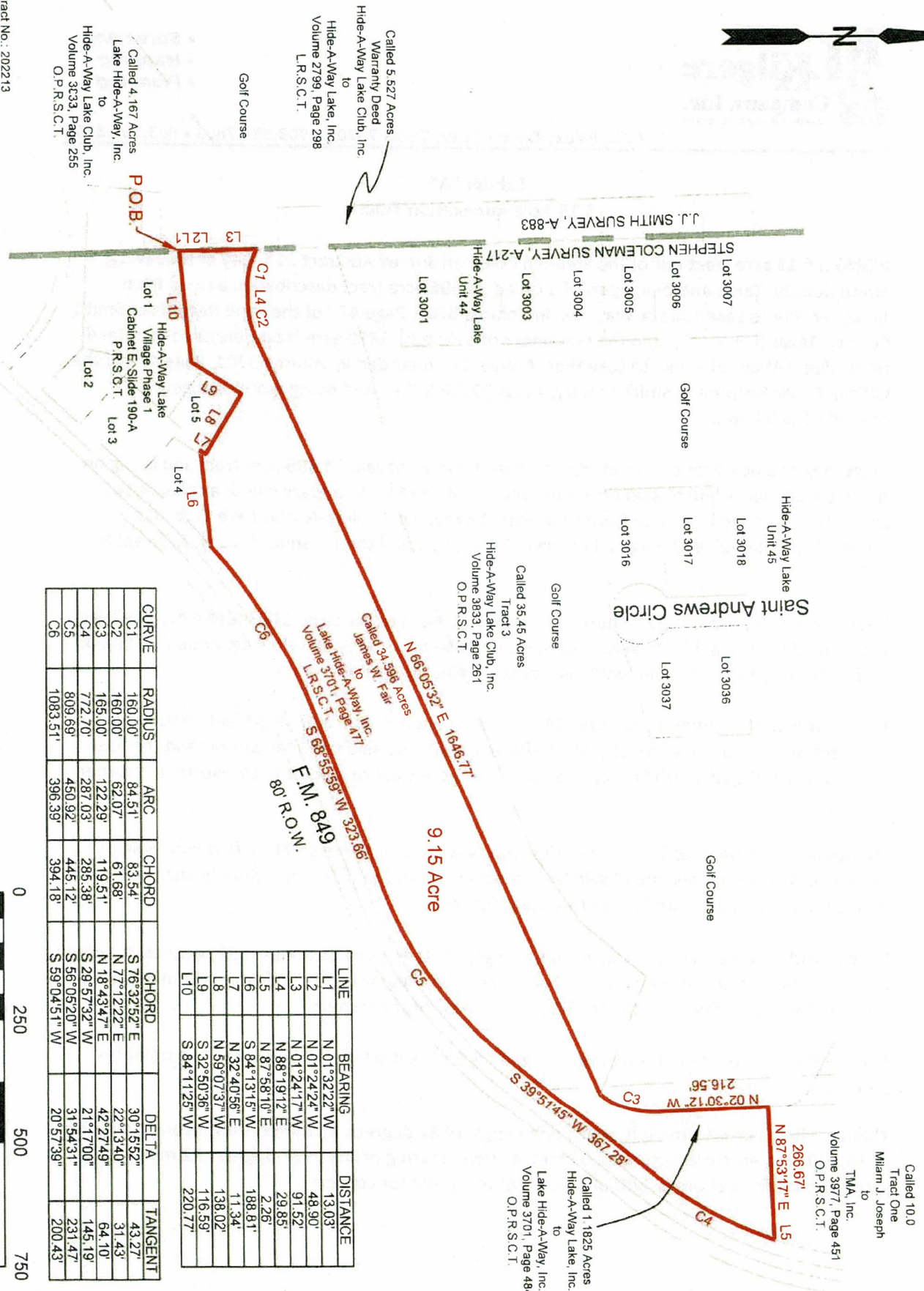


Exhibit "B"

9.15 Acre Annexation Exhibit



CURVE	RADIUS	ARC	CHORD	CHORD	DELTA	TANGENT
C1	160.00'	84.51'	83.54'	S 76°32'52" E	30°15'32"	43.27'
C2	160.00'	62.07'	61.66'	N 77°12'22" E	22°13'40"	31.43'
C3	165.00'	122.29'	119.51'	N 18°43'47" E	42°27'49"	64.10'
C4	772.70'	287.03'	285.38'	S 29°57'32" W	21°17'00"	145.19'
C5	809.69'	450.92'	445.12'	S 56°05'20" W	31°54'31"	231.47'
C6	1083.51'	396.39'	394.18'	S 59°04'51" W	20°57'39"	200.43'

LINE	BEARING	DISTANCE
L1	N 01°32'22" W	13.03'
L2	N 01°24'24" W	48.90'
L3	N 01°24'17" W	91.52'
L4	N 88°19'12" E	29.85'
L5	N 87°58'10" E	2.26'
L6	S 84°13'15" W	188.81'
L7	S 32°40'56" E	11.34'
L8	N 59°07'37" W	138.02'
L9	S 32°50'36" W	116.59'
L10	S 84°11'25" W	220.77'

Contract No.: 202213  
Date: December 10, 2025  
Drawn By: R.T.W.

**Exhibit "A"**  
**9.15 Acre Annexation Tract**

**BEING a 9.15 acre tract** out of the Stephen Coleman Survey Abstract 217, City of Hideaway, Smith County, Texas and being part of a called 34.596 acre tract described in a Deed from James W. Fair to Lake Hide-A-Way, Inc. in Volume 3701, Page 477 of the Land Records of Smith County, Texas (L.R.S.C.T.), and the remainder of a called 1.1825 acre tract described in a Deed from Hide-A-Way Lake, Inc. to Lake Hide-A-Way, Inc. recorded in Volume 3701, Page 484 of the Official Public Records of Smith County, Texas (O.P.R.S.C.T.) and being more completely described as follows:

**Beginning** at a point for corner at the Southwest corner of said 34.596 acre tract and being on the West boundary line of said Coleman Survey and the East boundary line of a called 4.167 acre tract described in a Deed from Lake Hide-A-Way, Inc. to Hide-A-Way Lake Club, Inc. recorded in Volume 3833, Page 255 of said O.P.R.S.C.T. and the J.J. Smith Survey, Abstract No. 883;

**Thence** North 01 degrees 32 minutes 22 seconds West, a distance of 13.03 feet along the West boundary line of said 34.596 acre tract and said Coleman Survey and the East boundary line of said 4.167 acre tract and said Smith Survey to a point for corner;

**Thence** North 01 degrees 24 minutes 24 seconds West, a distance of 48.90 feet continuing along the West boundary line of said 34.596 acre tract and said Coleman Survey and the East boundary line of said Smith Survey and said 4.167 acre tract to a point at the Northeast corner of same;

**Thence** North 01 degrees 24 minutes 17 seconds West, a distance of 91.52 feet continuing along the West boundary line of said 34.596 acre tract and said Coleman Survey and the East boundary line of said Smith Survey to a point for corner;

**Thence** with a curve to the left with a delta angle of 30 degrees 15 minutes 52 seconds, a radius of 160.00 feet, an arc length of 84.51 feet, a chord bearing of South 76 degrees 32 minutes 52 seconds East, for a chord length of 83.54 feet to a point for corner;

**Thence** North 88 degrees 19 minutes 12 seconds East, a distance of 29.85 feet to a point for corner;

**Thence** with a curve to the left with a delta angle of 22 degrees 13 minutes 40 seconds, a radius of 160.00 feet, an arc length of 62.07 feet, a chord bearing of North 77 degrees 12 minutes 22 seconds East, for a chord length of 61.68 feet to a point for corner;



**Thence** North 66 degrees 05 minutes 32 seconds East, a distance of 1646.77 feet to a point at the Southeast corner of a called 35.45 acre tract conveyed in a Deed as Tract 3 to Hide-A-Way Lake Club, Inc. recorded in Volume 3833, Page 261 O.P.R.S.C.T.;

**Thence** along the East boundary line of said 35.45 acre tract and with a curve to the left with a delta angle of 42 degrees 27 minutes 49 seconds, a radius of 165.00 feet, an arc length of 122.29 feet, a chord bearing of North 18 degrees 43 minutes 47 seconds East, for a chord length of 119.51 feet to a point for corner;

**Thence** North 02 degrees 30 minutes 12 seconds West, a distance of 216.56 feet continuing along the East boundary line of said 35.45 acre tract to a point for corner;

**Thence** North 87 degrees 53 minutes 17 seconds East, a distance of 266.67 feet along the North boundary line of said 34.596 acre tract and the South boundary line of a called 10.0 acre tract described as Tract One in a Deed from Milam J. Joseph to TMA, Inc. recorded in Volume 3977, Page 451 O.P.R.S.C.T. to a point for corner;

**Thence** North 87 degrees 58 minutes 10 seconds East, a distance of 2.26 feet continuing along the North boundary line of said 34.596 acre tract and the South boundary line of said 10.0 acre tract to a point at the Southeast corner of same and being on the Northwest right-of-way line of F.M. Highway No. 849 (80' R.O.W.);

**Thence** along said Northwest right-of-way line and with a curve to the right with a delta angle of 21 degrees 17 minutes 00 seconds, a radius of 772.70 feet, an arc length of 287.03 feet, a chord bearing of South 29 degrees 57 minutes 32 seconds West, for a chord length of 285.38 feet to a point for corner;

**Thence** South 39 degrees 51 minutes 45 seconds West, a distance of 367.28 feet continuing along said Northwest right-of-way line to a point for corner;

**Thence** continuing along said Northwest right-of-way line and with a curve to the right with a delta angle of 31 degrees 54 minutes 31 seconds, a radius of 809.69 feet, an arc length of 450.92 feet, a chord bearing of South 56 degrees 05 minutes 20 seconds West, for a chord length of 445.12 feet to a point for corner;

**Thence** South 68 degrees 55 minutes 59 seconds West, a distance of 323.66 feet continuing along said Northwest right-of-way line to a point for corner;

**Thence** continuing along said Northwest right-of-way line and with a curve to the left with a delta angle of 20 degrees 57 minutes 39 seconds, a radius of 1083.51 feet, an arc length of 396.39 feet, a chord bearing of South 59 degrees 04 minutes 51 seconds West, for a chord length of 394.18 feet to a point at the Northeast corner of Lot 4 of Hide-A-Way Lake Village Phase 1 according to a Final Plat thereof recorded in Cabinet E, Slide 190-A of the Plat Records of Smith County, Texas;

**Thence** South 84 degrees 13 minutes 15 seconds West, a distance of 188.81 feet along the North boundary line of said Lot 4 to a point at an ell corner in the Southeast boundary line of Lot 5 of said Hide-A-Way Lake Village Phase 1;

**Thence** North 32 degrees 40 minutes 56 seconds East, a distance of 11.34 feet along the Southeast boundary line of said Lot 5 to a point at the East corner of same;

**Thence** North 59 degrees 07 minutes 37 seconds West, a distance of 138.02 feet along the Northeast corner of said Lot 5 to a point at the North corner of same;

**Thence** South 32 degrees 50 minutes 36 seconds West, a distance of 116.59 feet along the Northwest corner of said Lot 5 to a point on the North boundary line of Lot 1 of said Hide-A-Way Lake Village Phase 1;

**Thence** South 84 degrees 11 minutes 25 seconds West, a distance of 220.77 feet along the North boundary line of said Lot 1 to the **place of beginning, containing 9.15 acres of land.**

"This document was prepared under 22 TAC §663.21, and does not reflect the results of an on the ground survey, and is not to be used to convey or establish interests in real property except those rights and interests implied or established by the creation or reconfiguration of the boundary of the political subdivision for which it was prepared."

I, Kevin L. Kilgore, Registered Professional Land Surveyor No. 4687, Texas, do hereby certify that the above field note description was prepared under my direction and supervision during the month of December, 2025.

**GIVEN UNDER MY HAND AND SEAL, This 10th day of December, 2025.**



**Kevin L. Kilgore, R.P.L.S. 4687**

