

# Hunter 356



Make	Model	Length	Price	Year	Condition
Hunter	356	35 ft	CAD 94,000	2003	Used
Boat Name	Hull Material	Draft	Number of Engines	Fuel Type	
Other Woman	Fiberglass	5 ft	1	Diesel	

"Other Woman" has many upgraded such as: Heat and AC, Stove with oven, cockpit cushions, cruising spinnaker, traveller on the arch, shoal keel, windlass, autopilot, plotter and instruments, refrigeration, dedicated spinnaker and head sail winches, SS midship cleats, Stereo with salon and cockpit speakers... to mention only a few. The new in 2017 full battened main in a Lazy Bag and jack flaking system rounds out the package and provided uncompromised performance while making mainsail handling with single line reefing and easy sail storage. Present owner is the 2nd and Other Woman has always been on the Great Lakes with the exception of one season when she was trucked to and from Florida and constant and fastidious care has maintained the boat in Bristol Condition. Game Changer - Glenn Henderson Hunters 2002 was a "Game Changer"

for the sailing industry as well as for performance from a cruising boat. Finally a cruising boat did not sacrifice sailing ability for the sake of its ability to cruise. Starting with the bow... the 356 had a more plumb bow (which reduced the forward overhang as well as increased water line length) in addition to a unique "Bow Hollow." Longer water line mean more speed & more room below. The Bow Hollow allowed the boat to enter the oncoming wave more gently while the more Plumb Bow made the angle to the water much greater so the boat would pound less as the boat worked its way windward into oncoming seas... vastly reducing "Pitching Motion" associated with long overhangs. Higher top sides on the 356 meant dryer decks and of course more living space below. The beam was carried further aft for more "Form Stability" as well as provided a full-size berth and owner's cabin below with tons of storage, which also acts to kept the boat more upright relying not just solely on the weight of the keel. Less heel...also has added benefit as it makes time aboard for the crew less taxing and tiring allowing for more civilized sailing. With more beam aft... "Stern Reflex" was added to allowed the boat fall forward on its own exit wave making it more hydrodynamic thru the water. Also, the 356's controversial rudder is much deeper than on most previous boats... but just a tad shorter than depth of the keel which allows for greater control and improved windward performance. So when pushing hard for a more exhilarating yet controlled sail the 356 delivers. To offset the increased hydraulic friction that comes with a wider stern section Hunter included in the hull mould an in-perceivable-to-the-eye "S" shape to create cavitation to reduce friction making the hull more slippery thru the water. The keel also, is not only lead, but designed so that the majority of the weight is well down low where it should be and also added small winglets to help prevent pitching. For safety and impact security...KEVLAR was used in the forward section of the hull for collision and impact resistance. The 356 also incorporated other innovations that were already being used by Hunter such as: the innovative Walk-Thru stern; integrated 360 Degree rub-rail; SS arch with traveller atop to make mainsail handling as easy as possible; fractional rig to make head sail management easy. As well as more storage on the stern in addition to as a set of seats to sit and enjoy the water and the great out doors. Also, the 1st time on a production vessel...the helm used top brand name Rack and Pinion set up eliminating sloppy cables and more direct steering with better feedback to the helmsmen. Below decks the 356 does not disappoint: A roomy V berth with the storage of a 40-footer. Roomy salon with seating for up to 6 or so... a dining table that converted to a double berth as well as sleeping to port. The Galley had storage everywhere including under the floor board...Corian counter tops...massive fridge and freezer. Aft cabin had nice amount of headroom and a queen-sized bed with a large hatch above so as not to feel claustrophobic. The owner's berth even has a headboard... truly a first on a boat like this.... comforts of home. The head has a nice vanity w/ separate head w/ shower as well as a wet locker. The 356's sizable nav station with plenty of storage also proved a nice feature as well as safety features as Hunter locating all the thru hull fitting at the base of the stairs.... No running around in search of a thru hull valves... all were in one space ... very neat and tidy. Additionally,

cabinetry and furniture below are made from Honduras Teak protected with varnish and the trim is solid teak. Floors are teak and Holly. Do not miss this rare opportunity to get one of the most handsome vessels of this size and vintage at a fraction of the cost of new.

## **Measurements**

LOA: 35 ft 6 in

LWL: 30 ft 7 in

Beam: 12 ft

Max Draft: 5 ft

Cabin Headroom: 6 ft 5 in

Dry Weight: 13900 lb

Ballast: 5023 lb

Windlass: Electric Windlass

Electrical Circuit: 12V

Fuel Tanks #: 1

Fuel Tanks Capacity: 38 gal

Fresh Water Tanks #: 1

Fresh Water Tanks Capacity: 75 gal

Holding Tanks #: 1

Holding Tank Capacity: 30 gal

Number of single berths: 6

Number of double berths: 3

Number of twin berths: 1

Number of Cabins: 2

Number of Heads: 1

## **Propulsion**

*Engine #1*

Engine Make: Yanmar

Engine Model: 3GM30

Primary Engines: Inboard

Drive Type: Direct Drive

Power: 27 hp

Propeller Type: 3 Blade

Propeller Material: Alloy

## **Electronics**

Depthsounder

Log-Speedometer  
Wind Speed and Direction  
TV Set  
Navigation Center  
Plotter  
Autopilot  
Radio  
Compass  
CD Player  
GPS  
Cockpit Speakers  
VHF

### **Sails**

Fully Battened Mainsail  
Asymmetric Spinnaker  
Furling Genoa

### **Sail Area**

IJPE : 632.00 sq ft  
I : 44.83 ft  
J : 13.17 ft  
P : 44.92 ft  
E : 15.00 ft  
Working Sail Area : 632.00 sq ft

### **Keel Details**

Keel #1  
Keel Type: Shoal\_Draft  
Ballast: 5064 lb  
Displacement: 13900 sq ft  
Max Draft: 5.00 ft

### **Equipment / Spec. List**

Auxiliary Power: 27 HP Yanmar Diesel w/ 3-Feathering VariProp

Engine Hours: No Hr meter

Headroom: 6'5"

Fuel: 144 L

Water: 284 L

Holding Tank: 114 L

CE Classification: Category A

On Deck/Rigging:

SS bow Pulpit

Selden mast with full batten main sail in Lazy Bag with Support Struts

New main by quantum 2017 Lazy jacks and zippered lazy bag.

110 Headsail on furling

Spinnaker with sock

Solid Vang

Inboard jib tracks

SS Arch w/ Harkin mainsheet traveller

Masthead windex

2x 2 speed cabin top ST winches

2x 2 speed halyard ST

2x 2 Speed dedicate ST spinnaker winches

Electric windlass

Dual SS stem fitting

15Kg Rockna with 115' chain and 150'

2017 full enclosure with eisenglass dodger, add'l front dodger window with screen, bimini top storage - Genco

Plasteek teak flooring cockpit floor and aft hatch covers

SS Destroyer type Wheel

LED Anchor light

Double lifelines

Halyard storage wells

Manual Bilge pump

Walk - Thru Transom

Folding Helm seat

Drink Holders

Micron sea blue antifouling  
Fenders and dock lines  
3 Opening hatches  
4 Opening ports  
Taft rail seats w/ cushions  
Walk thru stern with storage and SS telescoping boarding ladder  
Hot and cold stern shower  
Dual propane storage locker with (1) tanks  
Stern storage Port & Stbd.  
Expansive cockpit locker as well as other storage lockers and dual propane locker vented overboard

### **Below Deck**

#### **Electronics Nav:**

Autopilot (Wheel)  
ST40  
Speed  
Depth

#### **ST60**

Wind  
Garmin Chart plotter w/ GPS and Wifi  
AM/FM Stereo w/ CD w/ Cockpit speakers  
Binnacle compass  
Waste tank monitor  
Water tank gauge  
VHF radio at helm w/AIS

#### **Cabins / Salon:**

Teak wood throughout  
Teak / holly sole  
Corian counter tops  
Hot and cold pressure water  
V-Berth sleeps two with two hanging lockers, storage below  
Dinette table w/ storage compartment and converts to double berth  
Double aft cabin w/ locker with shelves and plenty of storage at foot, aft, behind headboard as well as under berth. Large overhead hatch c/w bug screen.

Screens for opening ports and hatches  
Window shades  
Private Aft Owner's cabin  
Foam Mattress  
Head: w/ vanity sink, toilet, shower and wetlocker  
Shower overboard sump pump

**Galley:**

2 burner propane stove with oven – gimballed w/ solenoid safety shut-off  
Microwave  
Dual SS sinks w/ hot and cold pressure water  
Expansive 12V Fridge and amply freezer  
Built in trash  
Under floor storage  
Dedicated dish and cup storage c/w 4 place-settings

Electrical:

110V Shore power cord  
AC panel  
DC panel  
AC outlets throughout  
4X 6V house Battery and separate 2x 12V  
Blue Seas amp battery charger  
Electric bilge pump w/valve  
Inverter 1800

**Safety:**

VHF radio at Nav with remote at Hem  
CGG Approved flares  
4 Life Vests  
Throwing line  
Life ring  
Flashlight  
Fire and CO2 alarms  
Fire extinguishers  
Emergency tiller

**Factory Upgrades:**



Stove w/ Oven  
Electric windlass  
Traveller on arch  
ST60 Wind  
ST40 Speed and depth  
Refrigeration w/ Freezer – Large Capacity  
Spinnaker Winches  
Stereo CD with arch and salon speakers

**Miscellaneous:**

8 pad steel folding cradle  
Hot water heater  
Screens throughout  
Cockpit cushions  
Heat and AC  
OB motor mount  
Flat Screen TV  
Cockpit cushions

**Recent Owner additions / Upgrades:**

Electric Head  
Custom window shades  
Hull and deck buffed and any small nicks or scratches repaired

**Manufacturer Provided Description**

The Hunter 356 features a tall, fractional rig, which is a direct descendent of the B&R rig that powered Hunter's Child to a second place finish in the recent BOC. Hunter has engineered the mast to carry less weight aloft with smaller sections. This is accomplished by utilizing swept-back spreaders and reverse diagonals as well as mast support struts. This combination provides superior strength without a backstay and increases the stability at the same time. By using a large roach main as the power sail, Hunter has eased the effort in sail handling and allowed for real versatility for all wind and sea conditions. The benefit is better performance with less effort. The deck layout of the Hunter 356 reflects the innovation that accompanies the rig. An integrated arch protects the cockpit from snapping main sheets and blistering sun with the optional Bimini. This arch keeps the cockpit clear and open. A custom console stands ready with the standard VHF and instruments. Single-lever control and a fold-down table along with engine instrumentation complete the command station. The swim platform and walkthrough transom complete with

shower and folding ladder are perfect for water sports or for boarding the tender. Storage is everywhere and the non-skid is absolutely first-rate. Comfort is truly important aboard whether for a week or a year, so Hunter has created an interior that not only looks good, but works as well. Two private, large staterooms along with an enormous head with shower and a salon that can seat eight plus a gourmet galley will keep all the crew happy.

### **Disclaimer**

The Company offers the details of this vessel in good faith but cannot guarantee or warrant the accuracy of this information nor warrant the condition of the vessel. A buyer should instruct his agents, or his surveyors, to investigate such details as the buyer desires validated. This vessel is offered subject to prior sale, price change, or withdrawal without notice.



FloorPlan





Stern



Top side II



Top Side



Top side III





Bow area



Companion way



Anchor Locker windlass



Helm area



Deck I



Traveller on arch



Spinnaker winches



Engine control



Taft Rail Seat I



Stern II



OB motor storage



Open stern





Flexi Teak



Comming storage



Massive storage in cockpit



Keel



Propane



Rudder



Salon



rudder bottom



Salon looking aft



VariProp



Seating





Salon Table



Flat Screen TV



Nav station



Vee Berth



Propane control



V berth storage Stb



V Berth storage II Port side



ability to open up the cabin and also allows air movement



Shelving



Owner's Berth



Vee Berth Head liner area





Storage at the headboard, along stern and under berth



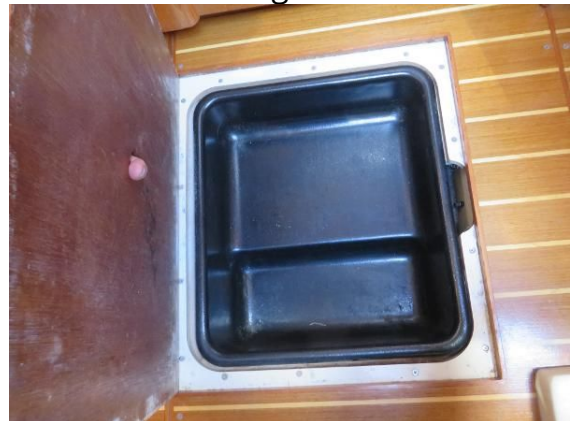
Stove with oven



Clean Stove Top



Massive fridge and freezer



Under floor storage

Hanging locker owner's



Galley area





Storage



Vanity in Head



Head / Shower / Wet Locker



Bilge area



Bilge area II



Thru Hull location