

TITLE : Subdivision of Parcel 28
Sheet No. : 2535B

ISLAND : Tortola
Scale : 1 / 1250

SECTION : Mount Sage
Date of Survey : March 2010

LOCALITY : Havers
L.D.C.A. No. : S87/08

Plan No. : CA-2535B-005-T

LOT 1 POINT ID	BEARING	DISTANCE	NORTHING	EASTING	DESCRIPTION
6A142	131°55'39"	6.609m	2035191.876	325936.846	1/2' SRPL
6A193	135°59'41"	26.583m	2035187.460	325941.763	1/2' SRPL
6A143	143°07'29"	33.230m	2035168.340	325960.231	1/2' SRPL
6A144	143°07'30"	27.473m	2035141.758	325980.171	1/2' SRPL
6A145	222°58'19"	8.918m	2035119.781	325996.657	1/2' SRPL
6A139	302°49'23"	78.213m	2035113.256	325990.577	1/2' SRPL
6A140	18°19'12"	38.160m	2035155.651	325924.851	1/2' SRPL
6A142	181°9'12"	38.160m	2035191.876	325936.846	1/2' SRPL

Area = 0.495 Acres or 0.2004 Hectares

LOT 2 POINT ID	BEARING	DISTANCE	NORTHING	EASTING	DESCRIPTION
6A148	78°14'38"	28.557m	2035212.211	325858.805	1/2' SRPL
6A149	85°01'04"	8.103m	2035218.029	325886.764	1/2' SRPL
6A150B	98°26'19"	7.953m	2035218.733	325894.836	NMP
6A150	111°47'46"	8.028m	2035217.566	325902.703	1/2' SRPL
6A151B	125°13'01"	8.028m	2035214.585	325910.157	NMP
6A151	131°55'39"	27.057m	2035209.955	325916.716	1/2' SRPL
6A142	198°19'12"	38.160m	2035191.876	325936.846	1/2' SRPL
6A140	303°51'34"	20.213m	2035155.651	325924.851	1/2' SRPL
6A141	263°44'24"	5.524m	2035166.913	325908.066	1/2' SRPL
6A115	263°44'24"	24.943m	2035166.301	325902.575	1/2' SRPL
6A116	260°10'03"	27.506m	2035163.591	325877.781	1/2' SRPL
6A117	359°04'46"	42.317m	2035158.894	325850.680	1/2' SRPL
6A147	38°39'42"	14.095m	2035201.205	325850.000	1/2' SRPL
6A148	179°04'46"	42.317m	2035158.894	325850.680	1/2' SRPL

Area = 1.006 Acres or 0.407 Hectare

LOT 3 POINT ID	BEARING	DISTANCE	NORTHING	EASTING	DESCRIPTION
6A117	260°10'03"	11.187m	2035158.894	325850.680	1/2' SRPL
6A118	248°45'42"	40.144m	2035166.983	325839.657	1/2' SRPL
6A119	260°08'53"	11.694m	2035142.441	325802.240	1/2' SRPL
6A120	03°38'08"	49.346m	2035140.440	325790.719	1/2' SRPL
6A152	40°56'23"	14.547m	2035189.687	325793.848	1/2' SRPL
6A153	78°14'38"	56.613m	2035200.676	325803.380	1/2' SRPL
6A148	218°39'42"	14.095m	2035201.205	325850.000	1/2' SRPL
6A147	179°04'46"	42.317m	2035158.894	325850.680	1/2' SRPL

Area = 0.778 Acre or 0.314 Hectare

LOT 4 POINT ID	BEARING	DISTANCE	NORTHING	EASTING	DESCRIPTION
6A155	101°04'03"	4.397m	2035196.508	325776.358	1/2' SRPL
6A156B	85°34'23"	13.770m	2035196.727	325784.402	NMP
6A156	78°14'38"	19.384m	2035196.727	325784.402	1/2' SRPL
6A153	220°56'23"	14.547m	2035200.676	325803.380	1/2' SRPL
6A152	183°38'08"	49.346m	2035189.687	325793.848	1/2' SRPL
6A120	260°08'53"	27.200m	2035140.440	325790.719	1/2' SRPL
6A121	274°00'41"	22.993m	2035135.787	325763.920	1/2' SRPL
6A122	296°40'41"	17.270m	2035137.395	325740.983	1/2' SRPL
6A123	332°24'05"	3.076m	2035145.149	325725.552	1/2' SRPL
6A124	331°18'11"	50.939m	2035147.899	325724.174	1/2' SRPL
6A154	66°59'45"	15.443m	2035190.473	325752.144	1/2' SRPL
6A155	139°06'23"	5.924m	2035196.508	325766.358	1/2' SRPL

Area = 0.790 Acre or 0.319 Hectare

LOT 5 POINT ID	BEARING	DISTANCE	NORTHING	EASTING	DESCRIPTION
6A158	139°06'23"	5.924m	2035218.062	325730.650	1/2' SRPL
6A159B	131°46'38"	13.770m	2035213.584	325734.528	1/2' SRPL
6A159	116°16'59"	13.779m	2035204.410	325744.797	1/2' SRPL
6A155B	101°04'03"	9.382m	2035198.309	325757.151	NMP
6A155	246°59'45"	15.443m	2035196.508	325766.358	1/2' SRPL
6A154	213°18'11"	50.939m	2035190.473	325725.144	1/2' SRPL
6A124	312°48'35"	26.437m	2035147.899	325724.174	1/2' SRPL
6A125	321°55'10"	21.506m	2035165.865	325704.780	1/2' SRPL
6A126	312°55'10"	21.506m	2035182.794	325691.515	1/2' SRPL
6A127	316°53'44"	18.938m	2035196.621	325678.574	1/2' SRPL
6A157	58°48'27"	44.975m	2035219.914	325717.048	1/2' SRPL
6A158	97°45'13"	13.728m	2035218.062	325730.650	1/2' SRPL

Area = 0.738 Acre or 0.298 Hectare

LOT 6 POINT ID	BEARING	DISTANCE	NORTHING	EASTING	DESCRIPTION
6A127	320°55'28"	32.314m	2035196.621	325678.574	1/2' SRPL
6A128	317°22'19"	22.074m	2035221.707	325658.205	1/2' SRPL
6A129	58°22'37"	53.748m	2035237.948	325643.256	1/2' SRPL
6A160	139°06'26"	63.587m	2035266.130	325689.023	1/2' SRPL
6A158	277°45'13"	13.728m	2035219.914	325717.048	1/2' SRPL
6A157	238°48'27"	44.975m	2035196.621	325678.574	1/2' SRPL
6A127	320°55'28"	32.314m	2035196.621	325678.574	1/2' SRPL

Area = 0.722 Acre or 0.292 Hectare

LOT 7 POINT ID	BEARING	DISTANCE	NORTHING	EASTING	DESCRIPTION
6A129	317°22'19"	9.701m	2035237.948	325643.256	1/2' SRPL
6A130	324°35'25"	24.381m	2035245.086	325636.686	1/2' SRPL
6A131	338°21'38"	22.429m	2035264.957	325622.559	1/2' SRPL
6A132	60°39'04"	48.848m	2035285.806	325614.288	1/2' SRPL
6A133	147°52'34"	23.156m	2035309.747	325656.866	1/2' SRPL
6A161	140°25'21"	31.146m	2035290.136	325669.179	1/2' SRPL
6A160	238°22'37"	53.748m	2035266.130	325689.023	1/2' SRPL
6A129	317°22'19"	9.701m	2035237.948	325643.256	1/2' SRPL

Area = 0.713 Acre or 0.289 Hectare

LOT 8 POINT ID	BEARING	DISTANCE	NORTHING	EASTING	DESCRIPTION
6A165	117°36'20"	13.853m	2035304.784	325678.286	1/2' SRPL
6A166	105°28'35"	56.418m	2035298.365	325690.562	1/2' SRPL
6A167	98°46'36"	8.924m	2035283.310	325744.934	1/2' SRPL
6A167B	86°15'03"	8.924m	2035281.949	325753.754	NMP
6A168	182°16'02"	38.500m	2035282.532	325762.659	1/2' SRPL
6A169	182°16'02"	38.500m	2035244.062	325761.136	1/2' SRPL
6A170	296°16'59"	11.743m	2035205.592	325759.613	1/2' SRPL
6A170B	311°29'55"	11.743m	2035210.792	325749.083	NMP
6A171	319°17'41"	95.398m	2035218.573	325740.288	1/2' SRPL
6A162	326°00'33"	9.625m	2035290.892	325877.073	1/2' SRPL
6A163	43°25'02"	8.140m	2035298.872	325672.692	1/2' SRPL
6A165	117°36'20"	13.853m	2035304.784	325678.286	1/2' SRPL

Area = 0.976 Acre or 0.395 Hectare

LOT 9 POINT ID	BEARING	DISTANCE	NORTHING	EASTING	DESCRIPTION
6A169	73°28'51"	93.783m	2035244.062	325761.136	1/2' SRPL
6A172	164°43'46"	41.607m	2035270.728	325851.048	1/2' SRPL
6A173	115°29'49"	16.059m	2035230.590	325862.006	1/2' SRPL
6A174	258°14'38"	95.658m	2035223.677	325876.501	1/2' SRPL
6A175	265°51'06"	11.743m	2035204.187	325782.849	1/2' SRPL
6A175B	281°04'03"	11.743m	2035203.337	325771.137	NMP
6A170	02°16'02"	38.500m	2035205.592	325759.613	1/2' SRPL
6A169	73°28'51"	93.783m	2035244.062	325761.136	1/2' SRPL

Area = 1.173 Acre or 0.474 Hectare

LOT 10 POINT ID	BEARING	DISTANCE	NORTHING	EASTING	DESCRIPTION
6A168	73°43'29"	8.924m	2035282.532	325762.659	1/2' SRPL
6A168B	61°11'55"	8.924m	2035285.033	325771.225	NMP
6A176	54°56'09"	51.084m	2035289.332	325779.045	1/2' SRPL
6A177	95°54'09"	11.060m	2035318.680	325820.858	1/2' SRPL
6A178	157°42'47"	50.595m	2035317.543	325831.860	1/2' SRPL
6A172	253°28'51"	93.783m	2035270.728	325851.048	1/2' SRPL
6A169	281°04'03"	38.500m	2035244.062	325761.136	1/2' SRPL
6A168	73°43'29"	8.924m	2035282.532	325762.659	1/2' SRPL

Area = 0.936 Acre or 0.379 Hectare

LOT 11 POINT ID	BEARING	DISTANCE	NORTHING	EASTING	DESCRIPTION
6A179	69°02'52"	59.991m	2035182.596	325957.055	1/2' SRPL
6A200	130°20'01"	48.789m	2035204.048	326013.079	1/2' SRPL
8B1635	223°05'59"	38.211m	2035172.470	326050.270	1/2' SRPL
8B1638	197°17'55"	36.051m	2035144.570	326024.162	1/2' SRPL
8B1637	323°05'24"	45.250m	2035110.149	326013.442	1/2' SRPL
6A180	323°07'29"	33.704m	2035146.331	325986.266	1/2' SRPL
6A181	315°59'41"	12.935m	2035173.292	325966.041	1/2' SRPL
6A179	69°02'52"	59.991m	2035182.596	325957.055	1/2' SRPL

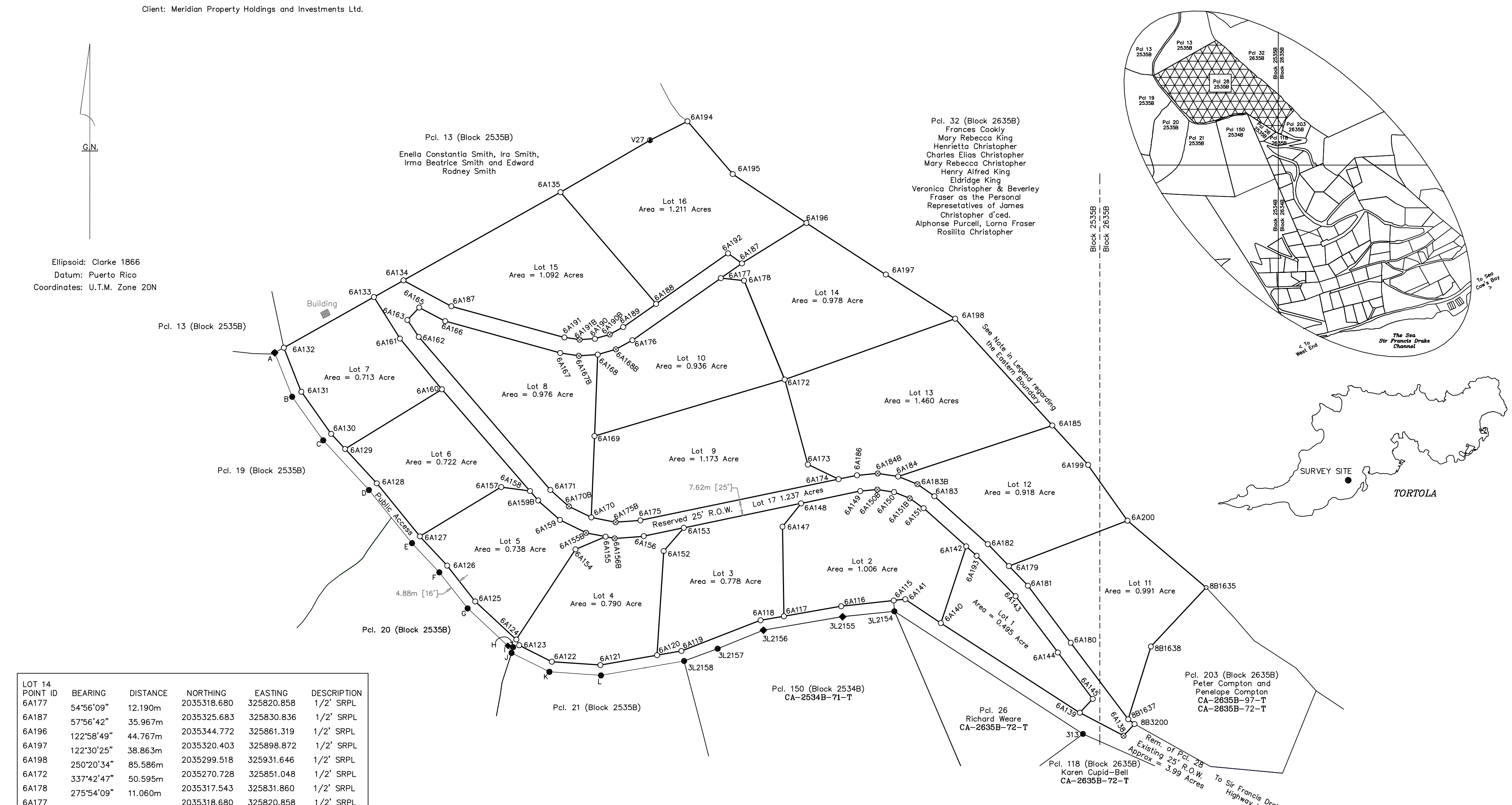
Area = 0.991 Acre or 0.401 Hectare

LOT 12 POINT ID	BEARING	DISTANCE	NORTHING	EASTING	DESCRIPTION
6A184	71°41'03"	76.743m	2035224.923	325904.686	1/2' SRPL
6A185	137°43'21"	25.160m	2035249.040	325977.541	1/2' SRPL
6A199	144°47'30"	32.822m	2035230.424	325994.467	1/2' SRPL
6A200	249°02'52"	59.991m	2035204.048	326013.079	1/2' SRPL
6A179	315°59'41"	14.393m	2035182.596	325957.055	1/2' SRPL
6A182	311°55'39"	33.936m	2035192.449	325947.056	1/2' SRPL
6A183	305°13'01"	9.809m	2035215.625	325921.807	1/2' SRPL
6A183B	291°47'46"	9.809m	2035221.281	325913.794	NMP
6A184	71°41'03"	76.743m	2035224.923	325904.686	1/2' SRPL

Area = 0.918 Acre or 0.371 Hectare

LOT 13 POINT ID	BEARING	DISTANCE	NORTHING	EASTING	DESCRIPTION
6A172	70°20'34"	85.586m	2035270.728	325851.048	1/2' SRPL
6A198	137°43'21"	68.223m	2035299.518	325931.646	1/2' SRPL
6A185	251°41'03"	76.743m	2035249.040	325977.541	1/2' SRPL
6A184	278°22'31"	9.809m	2035224.923	325904.686	1/2' SRPL
6A184B	264°57'16"	9.809m	2035226.352	325894.982	NMP
6A186	284°57'16"	9.809m	2035225.489	325895.211	1/2' SRPL
6A174	258°14'38"	8.979m	2035223.677	325876.501	1/2' SRPL
6A173	295°29'49"	16.059m	2035223.677	325876.501	1/2' SRPL
6A175	344°43'46"	41.607m	2035270.728	325851.048	1/2' SRPL

Area = 1.460 Acres or 0.591 Hectare



LOT 14 POINT ID	BEARING	DISTANCE	NORTHING	EASTING	DESCRIPTION
6A177					