

# Disneyana Dispatch Newsletter™

APR / MAY 2016



A Journey Through Disneyana . . . Past, Present and Future

## **"Disneyland's Tinker Bell"**



**Gina Rock "Tinker Bell"**  
by Joshua Shaffer

**"Taking on Tink's Wings"**  
by Mindy Johnson

**"Flying High with Tinker Bell"**  
by Jim Korkis

**DFC Chapters Give Back:  
Supporting Local Charities**

2016  
*Disneyana*  
**MANIA**



**BOARD OF DIRECTORS 2015-2017**

PRESIDENT  
Linda Rolls

[linda@disneyanafanclub.org](mailto:linda@disneyanafanclub.org)

VICE PRESIDENT OF FINANCE  
Louis Boish

[treasurer@disneyanafanclub.org](mailto:treasurer@disneyanafanclub.org)

VICE PRESIDENT OF MEMBERSHIP  
Jeannie Lee

[membership@disneyanafanclub.org](mailto:membership@disneyanafanclub.org)

VICE PRESIDENT OF CHAPTERS  
Gary Des Combes

[chapters@disneyanafanclub.org](mailto:chapters@disneyanafanclub.org)

VICE PRESIDENT OF MEDIA RELATIONS &  
COMMUNICATIONS

Dr. Andi Stein

[andistein@exchange.fullerton.edu](mailto:andistein@exchange.fullerton.edu)

SECRETARY

Ted Bradpiece

[secretary@disneyanafanclub.org](mailto:secretary@disneyanafanclub.org)

EDITOR-IN-CHIEF

Bob Welbaum

[editor@disneyanafanclub.org](mailto:editor@disneyanafanclub.org)

CONVENTION CHAIR

Brian Hugo

[brian@disneyanafanclub.org](mailto:brian@disneyanafanclub.org)

SPECIAL EVENTS CHAIR

Cathy Perrone

[cathy@disneyanafanclub.org](mailto:cathy@disneyanafanclub.org)

WEBMASTER

Theo Fukushima

[webmaster@disneyanafanclub.org](mailto:webmaster@disneyanafanclub.org)

DIRECTORS-AT-LARGE

Thomas C. Taffinder

[thomas@disneyanafanclub.org](mailto:thomas@disneyanafanclub.org)

Nicolasa Nevarez

Laurie Smith

LEGACY CHAIR

Allan Halcrow

[legends@disneyanafanclub.org](mailto:legends@disneyanafanclub.org)

CHARITIES CHAIR

Dennis Ritchey

[dennis@disneyanafanclub.org](mailto:dennis@disneyanafanclub.org)

ADDITIONAL EDITORIAL STAFF

Assistant Editor

Ian Miska

Disneyland Correspondent

Gary Marlis

*Disneyana Dispatch Newsletter*™ is published by the Disneyana Fan Club, for the benefit of its members. Subscription is included in Club membership. With the exception of copyrighted material provided by the Walt Disney Company or any of its divisions, copyrights for all material held by the Disneyana Fan Club © 2013 All Rights Reserved. Reproduction in part or in whole without written permission is prohibited. Brief extracts may be used with due acknowledgement. The Disneyana Fan Club is not responsible for mail not delivered due to undisclosed changes of address. Back issues, if available, may be ordered for \$2.50 each. All inquiries, comments, contributions, address changes, or requests for back issues should be made to:

**Disneyana Fan Club**  
P.O. Box 19212  
Irvine, CA 92623-9212  
(714) 731-4705  
[www.disneyanafanclub.org](http://www.disneyanafanclub.org)

## From The President: By Linda Rolls



Spring has Sprung....and summer will be here before we know it. We are gearing up for an amazing convention in July. Please be sure to check out the information in this newsletter regarding the seminars, banquets, and registration. Reserve early to get the best pricing.

As many have already heard, D23 has announced their next Expo for 2017 to take place at the same time we would ordinarily hold our convention. Clearly, we won't be planning anything that would be in competition with the Expo, but we are considering our options. In doing so, we want our members' input and will shortly be sending out a Convention Survey via email. When you receive the survey, please be sure to take a minute to respond. We are anxious to hear your ideas so we can make the most informed decision possible.

The last survey that was sent out was a tremendous success! There was in excess of a 75% response from our members, and your input is being used now as we discuss new directions for our beloved DFC. Overall, data showed that our members find satisfaction in DFC. Some of the needs that were noted

are: 1) Increased nationally sponsored events in areas other than Southern California; 2) More support for chapters; 3) Better communication overall. Through a Strategic Planning process, we will use your input to develop a detailed plan for the future. We want you to know that your voices are being heard. You may periodically see follow up surveys in the future to help us clarify some of the information we received. and your direct participation will be a critical piece of the improvement process. Stay tuned!

With respect to activities in other areas, please check the website and watch for the eblast on the next **Walking With Giants** event, which will be in Florida. Our good friend Robbie Sherman has arranged for our song to be played by a high school marching band in the parade on Dec. 19th. Cathy Perrone is working on a luncheon with Robbie and the band members on Sunday, Dec. 18th. I hope many of you will be there, especially those who find it difficult to get to events on the West Coast.

In closing I wish all of you magical adventures and the good health to enjoy them!

## From the Editor: By Bob Welbaum



Greg Shelton

If this issue looks different, I'm getting professional help.

No, for the newsletter. A new member with experience in marketing and branding has graciously offered to lend her expertise, so we'll be trying some new ideas to improve

readability. What do you think so far?

I promised you an issue of *Tomart's DISNEYANA Update* magazine with this newsletter. Unfortunately, Tomart is a bit behind schedule, so that magazine will be coming next time.

This is a paid advertisement. The Disneyana Fan Club is not affiliated with the advertiser and does not evaluate or endorse the quality or value of the service or product being promoted.



# THEME PARK connection

*THE BEST IN DISNEYANA, NASCAR, AND MOVIE MEMORABILIA*

WWW.THEMEPARKCONNECTION.COM (407)284-1934

**THEME PARK CONNECTION** IS A PROUD  
SUPPORTER OF THE DISNEYANA FAN CLUB!  
BRING IN THIS COUPON FOR 10% OFF YOUR  
PURCHASE AT **THEME PARK CONNECTION**



## Cover Story —

# Gina Rock: The Longest Serving Tinker Bell in Disneyland History

By Joshua C. Shaffer with Gina Rock



Joshua Shaffer is the author of *Discovering The Magic Kingdom* (DTMK). Visit him on his website [discoveringthemagic kingdom.com/](http://discoveringthemagic kingdom.com/) and meet him at the July 16 Show & Sale.

**Tinker Bell** is one of the most iconic characters that Disney has ever created. She made her first Disney appearance in the 1953 animated feature *Peter Pan*. Disney then used her to promote the upcoming theme park, Disneyland. Since the opening of the park in 1955, Walt thought the night-time fireworks show lacked something spectacular. Walt introduced crowds of Disneyland visitors to the first live version of Tinker Bell in 1961 when he had the 4-foot 10-inch tall Tiny Kline zip across the castle from atop the Matterhorn. Her appearance was welcomed by all who saw her. After her retirement in 1964, Tiny passed on the "wand" to Mimi Zerbini, who only flew for two summers, then passed the wand to Judy Kaye, and then on to Gina Rock.

Gina became Tinker Bell on May 31, 1983. She amazed the children nightly during the fireworks for 21 years until her retirement. Chances are if you saw the fireworks between 1984 and 2005, you probably saw her. Gina holds the record for the longest run as the popular pixie. After all that time, what would Tinker Bell do after she retires? Well, I had the pleasure of speaking with Gina on the subject. Tinker Bell goes on to help those in need. Gina joined an engineering firm that retains the Individual House-

hold Programs contract for presidential-declared disasters.

**DTMK:** What got you interested in doing aerialist work as Tinker Bell?

**GINA:** I was always interested in gymnastics and took ballet for eight years. I loved athletics from a very early age. I had a curiosity about circus performing and stunts starting at the age of 11. I was discovered by Bob Yerkes (stunt man in *Back To The Future I & III*, *Honey, I Shrunk The Kids*, *Who Framed Roger Rabbit*, and as Boba Fett in *Return of the Jedi*) at a gymnastics practice during my senior year in high school. Bob started training me before I left for Texas to join the circus as an aerialist. I eventually went on to join *Ringling Brothers* and *Circus Circus*. I had also traveled to



Gina Rock 1976, Ringling Brothers  
Photo Unknown



Left: Mitzi & Sergio Ramos

Right: Gina Rock

Photo Unknown

Taiwan, as a flying trapeze performer with an act that was hired by Judy Kaye's ex-husband, *Paul Kaye Circus*. Judy was Tinker Bell in the park at that time. I remembered seeing Tinker Bell fly over the castle at Disneyland when I was at the resort for Grad Night. I stated to my date: "Oh, I would love that job!" I asked Paul how Judy got the job at Disneyland. He said he didn't remember how she acquired the job seven years before, but that she was going to try and do it again after the Fantasyland makeover. So I was given the heads up about the Tinker Bell spot by Judy's husband. After almost ten years of circus performing, I returned to San Fernando Valley. Fantasyland was just refurbished, so in 1983 I visited

the Park and visited Card Corner to inquire about the position if they were going to hire a new Tink. As luck would have it, they said they were going to put her back in six months. Talk about perfect timing! I auditioned and acquired the job. My first flight from the castle was in 1983 when I was 28 years old, and found out two weeks later that I was pregnant with my first child, "my favorite pixie magic." A few years later I was pregnant with my second child and flew that summer as well, barely three months along.

**DTMK:** What was it like during your nightly routine?

**GINA:** To be Tink, I was escorted through the park and up the inside of the Matterhorn where I was tied to the cable 160 ft. in the air. At a specific time during the fireworks, I would take off and zip across the castle and crash into a giant mattress at the end. Cast members would come from all over the park just to watch me crash into that mattress. After I was detached from my harness, I would be taken back out of the park. (Gina holds the longest run as the popular pixie, as well as Patty Rock, her ex-sister-in-law that Gina had recommended initially as her substitute in 1985, but then later filled the position for half the time in 1995. Most importantly, the Tinker Bell crew that stayed with Gina and Patty throughout their tenure were not only vital to their safety and security but became like family.) The Tink crew would ready the equipment and then carry it across the park to the mountain, prepare the rigging, strap me in, and send me off. Trusting your crew was of the utmost importance.

**DTMK:** Did you do anything else for Disney besides flying as Tink?



**Gina Rock & Frank Wells enter the Annual Employee Forum, March 21, 1989.**

Disney Studios Photo, 1989

**GINA:** Oh yes. I was only Tinker Bell for about twenty seconds a night. My mother used to joke and say I only worked twelve minutes a year. At the time I wanted to raise my children myself. I didn't want them being raised by a babysitter or a nanny. So, in 1986, I created my own talent agency called *World Wide Acts*. In the early 90's, when Disney owned the Queen Mary, I provided fifty variety performers for the album release party of *Innuendo* which was released for the band Queen with my company at Disney's request. At one point I booked thirty performers for a corporate event when *Aladdin* came out with Robin Williams in 1992. I also booked special entertainers for the opening of *Indiana Jones and the Temple of the Forbidden Eye* media event. Basically, I did some booking for large media and corporate events and brought on jugglers, stilt walkers, contortionists, fire-eaters, balancing acts, sword swallows, as well as aerial circus performers. Besides Disney, I booked and promoted headliner rock acts such as *Motorhead*, and showcased musical talent for solicitation for record labels. For a while I was a booking agent for FM Station Live and a promoter for *Filthy McNasty's Saloon*. I procured openers, middle, and headliner comics around the country for over ten years. I was certified as a Personal Trainer by the Aerobics and Fitness Associa-

tion of America and have worked with athletes on their health and physical fitness issues. I also teamed up with a holistic doctor on speaking tours, lecturing on health and fitness issues, and visited many pediatric wards of hospitals to keep up the spirits of the patients.

**DTMK:** What were some of your favorite acts that you have booked?

**GINA:** All of them were fun. But I loved how diverse everyone was. But my favorite was booking the comedians. I myself am a comedic person. I love to laugh and make other people laugh.

**DTMK:** So having your own company at home made it possible to be Tinker Bell and raise a family?

**GINA:** Yes. It worked out well. I was married in 1984 and had my daughter, Jennifer, shortly after. She is now a video editor, and then later I had my son, Austin, who is a reality show technician. Working from home made it possible to be there for my children and continue doing what I love.

**DTMK:** Why did you stop portraying Tinker Bell?

**GINA:** In 2005, Disney upgraded the Tinker Bell portion of the show which was called "Remember... *Dreams Come True*," narrated by Julie Andrews. Tinker Bell was now going to be flying back and forth, up and down. At the end of 2004, I think around September, Disney began casting auditions and had me train other aerialists for the new flight sequence, and that's when I decided I had a fabulous run -- I was ready to retire. I wanted to pursue other interests. So, after 21 years of flight and at the age of 50, I decided to hang up my wings. I officially retired as

Tink on March 28, 2005.

**DTMK:** What did you do after you left Disney?

**GINA:** I trained to work with an engineering firm that assesses residential damages after a natural disaster. I am a disaster housing inspector for *Parsons Brinckerhoff/WSP/Alltech, Engineering*. When people register for individual assistance, they have their houses inspected for damages, medical needs assessed, and damages on vehicles evaluated. I was sitting in a college class in August 2005 when I was paged to go out and respond to my first post-disaster. It was for the Historic "Hurricane Katrina" in Louisiana.

**DTMK:** What made you want to pursue a career in that field?

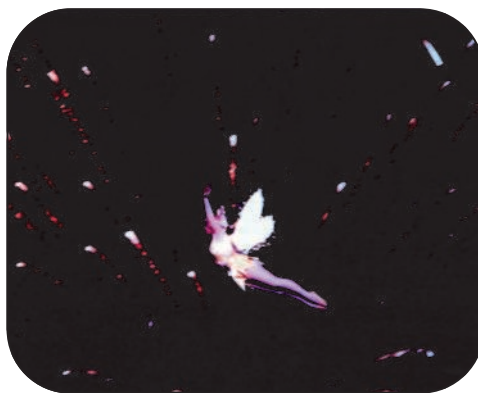
**GINA:** I met a friend of a mutual friend who had been doing the job for 28 years. I had just started college in 2003 when I met him. I was intrigued by what he was telling me about the job: helping folks after a crisis, and traveling. He stated that after I retire from playing Tinker Bell, I should take classes as an independent contractor for this engineering firm. My mother was altruistic, and I gained that attribute from her. My dad was a nuclear physicist, which is where I get my engineering interest from.

**DTMK:** How long are you at a single site? Does this job have you travel a lot?

**GINA:** Yes, it has me traveling everywhere. I have been stationed in twenty-seven states, post-disaster. While positioned in the disaster zones, I spend from three weeks to six months at one site.

**DTMK:** What do you do when there are no disaster zones to report to?

**GINA:** For the first few years it was pretty slow for me. I would only go out for three to four months at a time. In that time, I still kept up with my talent agency *World Wide Acts*. I owned a SAG franchise for eight years, but wasn't thrilled with it so I discontinued it. My niche is for procuring talent for live shows and events with those who have spent years honing their skills. I was also a project manager for a new pizza restaurant for a year in 2009, responsible for ordering building material, remodeling, and researching the recipe for homemade signature pizza dough. And from 2008-2009 I was hired as a circus director and project manager for a pilot program: *Circus Arts* at Los Angeles Gymnastics.



**Gina Rock Over Disneyland.**

Photo by Chuck McCance, 1986

**DTMK:** It sounds like you have experience everywhere. What else have you done?

**GINA:** For a ten-year span I was a personal training educator and taught vitamin therapy remedies until 2004, and continue to provide this vital service for the rest of my years. I was a *Circus of the Stars* trainer from 1978-1982. Along with that I was a flying trapeze artist, master of cer-

emonies, performed comedy juggling with a partner, and aerial ballet from 1979-1982. What inspired me to work in recovery was when I was a candy stripper from the age of 14, from 1971-1973.

**DTMK:** I hear you are trying to publish a book. What is your book about, and why did you start writing it?

**GINA:** About four years ago I was at an inspection and started to interact with a little boy of about the age of seven. I asked him if he had any crayons and paper. When he returned with the art supplies, I asked him if he would like to draw a picture of his house being flooded and how his experiences made him feel. The boy was all excited and drew his interpretation of the flooding for me. I was thrilled and impressed with how his drawing turned out. I started asking children to draw pictures for me of their experiences with the disasters. The children varied in age from four to twelve. Right now I have four books full of about 250 of these children's drawings of their experiences. I call the collection of hand-drawn pictures *Post-Disaster Art Therapy*, which is at the U.S. Copyright Office right now. My job sites and collected pictures with children cover six different states. One of my favorite sketches was drawn by a little boy in 2013 of a helicopter scooping his family up in a basket to take them away from their flooded home in the mountains of Colorado. Another favorite is one drawn also in 2013. I was in Alabama in an area where the kids didn't have any crayons to color with, so they used pencil. These pictures turned out to be more amazing because of the detail. All these pictures inspired me to create and share a book about my ex-

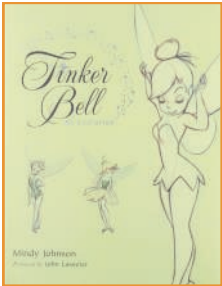
Continued bottom of next page ➡



## Taking On Tink's Wings

### Disneyland's Second Tinker Bell, MIMI ZERBINI!

By Mindy Johnson



**Mindy Johnson is author of the book *Tinker Bell — An Evolution*.**

**Only** a select handful of women have taken the form of Walt Disney's favorite fairy and known

the exhilaration of flying across the night skies above Disneyland. When Tiny Kline, the first to fly as Tink, hung up her wings, the second woman to take flight as Tinker Bell was Mimi Zerbini, a delightful seventy-something pixie and former trapeze artist.

"I was asked if I'd like to work for Disney as Tinker Bell," Zerbini recalled. "I was just 19 years old and never away from home. It was very exciting." From 1964 to 65, Mimi flew as Tinker Bell to light up the night skies over Disneyland. "Every night. Rain or shine, we went," Mimi laughed. "It would be windy, but we never called it off. It was quite a ride."

A trained trapeze artist since the age of five, Mimi was born into a long line of circus performers. "It's in the family," she laughed. "My father was a lion trainer. He passed that on to my brother. I loved trapeze and that was my decision to do this." Mimi traveled with her family in various circus shows throughout Europe and the US. "In 1960," she recalled, "we were in France and my daddy ran his own circus, then we came to America in 1961."

From June to just after Labor Day, Mimi transformed into Tinker Bell. "The costume was sequined to reflect the light and even though I'm a blonde, I had a little cap for Tinker Bell's hair. The harness was heavy because it also hooked on my back to the cable, so that was hard. Lela my wardrobe lady would dress me up and put me into the harness, then lock it to make sure it was good and set." Once through wardrobe, Mimi and her guardians made their way across to the Matterhorn ride. "They had to roll me around the park and I had this big

robe to protect my wings. Then we had to climb those steps." Mimi and team climbed the 234 steps from the bottom of the Matterhorn to her tiny perch at the top. "My wand would light up and halfway through the wire, I turn my light on my wand and that gives the signal to light up the fireworks...so yes, I really did set off the fireworks!"

Among the many highlights of Mimi's time at Disneyland, meeting Walt Disney was the most memorable. "When I met Mr. Disney, I was practicing the trapeze inside and he said, 'Who's this?'" Learning Mimi was the next Tinker Bell, Mimi recalled "I was sweating and he pulled his handkerchief out of his pocket and I dried my face off when I was talking with him. He asked me a bunch of questions and got very excited when I told him I came from Florida. He showed me a big map and he said that's where Disney's going to be in Florida. That was long before Disney World was even open. Mr. Disney was always super with me. He was a very lovely man."

periences with the children drawing their depicted experiences in post-disaster situations. It is my hope that these sketches will help children express their feelings and cope with difficult times. Every child has a story, and I want people to see that story and have a way to heal. My book is called *Children's Art Therapy: Creations from Post-Disasters* and my target publication time is summer 2016 when I hope to gain approval from the government contract-

ing office for FEMA. I will be honored to share these creations produced by children affected by natural disasters.

DTMK: That is just an amazing story. Are you planning on doing disaster housing inspecting until you retire?

GINA: I graduated recently with my BS in Public Safety and Emergency Management, and I was just accepted for the graduate program at USC for geospatial intelligence. I am

also working on two books: *If I Could Live 400 Years*, which will discuss what to do with your life if one could live to be 400, and the other is a fun motivational book about how fat cells run our lives. It teaches you how to stop them from demanding food. As you can see, I have already lived a varied life with many wonderful vocations I loved, but the experience and the magic will always be the role of the pixie Tinker Bell.

## Flying High with Tinker Bell

By Jim Korkis



Jim Korkis is an internationally respected Disney historian. His new book, *The Unofficial Disneyland 1955 Companion*, will be released in June. He was an original member when the National Fantasy Fan Club began.



**Tiny Kline in her dressing room.**  
*National Geographic*, Aug 1963, p 199

**Tiny Kline** came to America as a Hungarian immigrant at the age of fourteen as part of a dance troupe. Her trademark act when she performed with the Ringling Brothers Circus was an aerial iron-jaw act where she was suspended in the air from a metal bit in her mouth on a long glide wire where she slid from the top of tent to the ground.

On August 1, 1958 at a special "Disney Night at the Hollywood Bowl", Walt Disney was impressed with a spectacular one-thousand-foot glide from the top of the amphitheater and over the audience that ended on the stage that was performed by Kline dressed as Tinker Bell.

Kline, at age seventy, became the very first Tinker Bell to fly at Disneyland in 1961. At the time she was four feet ten inches tall and weighed ninety-eight pounds.

"She was a funny little old lady," Disney Legend Bill "Sully" Sullivan told me. "We used to escort her up to the top of the Matterhorn and dispatch her. She was seventy some years old and we were young whippersnappers and she'd bolt up the hill inside the mountain so quick that it was tough for us to catch up with her."

"Originally, she wanted to do that Tinker Bell gig by her teeth. She was an old circus performer and that's the way she did her act then. She didn't want to look down."

"She'd hit two mattresses. We had big old football players at the catch tower and she'd hit that thing just as fast as she could and BAM, she'd knock these guys over and she'd smile and go, 'Thank you, boys!' She loved to hit those mattresses as hard as she could. She took the bus in each night and had to run to catch the last bus going back to Los Angeles after the performance."

Kline performed for three summers but in 1964, health problems required her to hand over the wand (and harness) to nineteen-year old Algerian circus acrobat Mimi Zerbini. Zerbini was also a circus family veteran but only performed as Tinker Bell for that one summer. Kline passed away in 1964.

In 1965, Judy Kaye began a career of more than a decade of flying across the night sky at Disneyland. Kaye stood five foot, one inch tall. She was born into a circus family and paid her first visit to a circus arena when she was barely three weeks old.

She said, "I love doing Tink because of the flying. I'm partially a ham anyway. I enjoy my work. I wouldn't otherwise do it. Show people stay young. Tiny Kline was a classic example of that."

Kaye's father, Terrell Jacobs, worked with lions and tigers for the Ringling Brothers Circus. Her mother, Dolly, was a dancer and an aerialist who eventually became grounded due to a series of falls and eventually turned to working with animals as well.

When Walt Disney began making films featuring live animals, many of the animal stars were owned and trained by Judy's mother. Walt even included some of the animals in the old Disneyland Mickey Mouse Club Circus that only ran from November 1955 to January 1956.

Judy remembered that in those days they had a young Indian elephant owned by her mom. Walt walked up to the baby pachyderm and exclaimed: "That's Dumbo!" Judy's mom corrected Walt, "But her name's Dolly." "From now on," proclaimed Walt, "she's Dumbo."

When not performing as Tinker Bell, Judy still trained and worked with animals as well as designing and making circus costumes. Her husband, Paul V. Kaye, had his own circus that



toured internationally. Judy and her husband also were co-partners in a talent agency and booked some of the talent that toured the U.S. and Europe as part of the *Disney On Parade* show.

Shortly before nine o'clock each night during the summer, Judy Kaye would go into the Entertainment Office that was then above the *America Sings* attraction dressed in her street clothes. With some assistance she was transformed into Tinker Bell.

Wearing a long coat and her head covered, she was moved through the park to the Matterhorn where through a series of stairs, elevators and ladders, she was taken up to her position.

She was helped into her harness that resembled a parachute-like contraption, her wings attached and then was hooked up to the cable. Her "launcher" would hold her ankles in position as they waited for the signal. Her "catchers" waited behind the Fantasyland break area with a large mattress or two.

At the end of the night parade, the park announcer directed guests to look into the skies over Sleeping Beauty's Castle where Tinker Bell would light up the night with *Fantasy in the Sky*.

A recorded "click track tape" counted off the seconds before take-off. At the highest point, Tinker Bell is on a wire about one hundred and fifty feet in the air while most high-wire acts in the circus are done no more than fifty feet above the ground.

Approximately thirty seconds from the time she left the mountaintop, she 'landed' at the tower, sometimes coming in easily, sometimes rapidly and packing a real wallop, depending on a number of factors such as weather, weight and speed of flight.

At that end, the other half of her crew 'catches' her in a large, padded body mitt, calls the mountain to let them know she made it and how, unhooks her from the cable, de-wings her, and she's down and off in a waiting van, back to the Entertainment Office where she becomes Judy Kaye once again.

Tinker Bell's nightly flight was sidelined when her landing tower had been torn down to build the New Fantasyland in the early Eighties. Gina Rock at the age of twenty-seven auditioned for the role when the New Fantasyland re-opened in 1983 and that's the rest of the story that Joshua C. Shaffer shares in this issue.



**Tiny Kline over Sleeping Beauty Castle.**  
*National Geographic*, Aug 1963, p 198

**Do you have a favorite Tinker Bell story?**  
Send it to [editor@disneyanafanclub.org](mailto:editor@disneyanafanclub.org).

## Fact and Fiction in Publishing

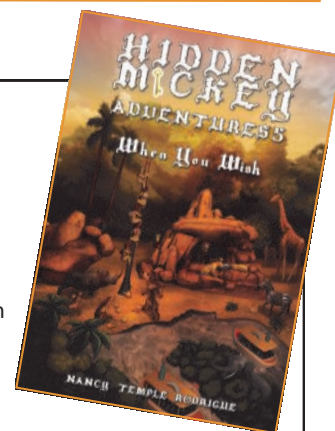


Dave Smith, Disney Legend, the retired Chief Archivist of The Walt Disney Company, and valued friend of the Disneyana Fan Club, has continued his "Ask Dave" column through the Internet. In recent years, questions have gotten more interesting and difficult for Dave to answer, as the more common answers can now be found online. Now with another critical mass of about 1,100 new Disney trivia Q&A, in May 2016 Dave released his second volume, *Disney Facts Revealed: Answers to Fans' Curious Questions* through Disney Editions. Divided into chapters covering a specific aspect of Disney history, including Disneyland, Walt Disney World, Disney films, Disney television, Disney characters, Disney collectibles, and more, many of the questions lead Dave to fascinating information that has not been published elsewhere.

Nancy Temple Rodrigue, author of 12 books in total, has recently released her fifth (and final!) Hidden Mickey novel *Hidden Mickey Adventures 5: When You Wish*. A lot has happened with this series, and this book is no exception. Examine the cover art and see how many hidden Mickeys you can find. (There are supposed to be fifteen.) Visit her website at <http://hiddenmickeybook.com/>.

From the website:

**A Family in Crisis:** When tragedy strikes, Adam and Beth find it more and more difficult to believe in miracles. Will their family ever be whole again? Peter is handed a special message. It is from Walt Disney himself. Can Peter get back his love for Disneyland and fulfill his special Hidden Mickey quest?



## Giving Back: Chapters Support Charities

Our recent survey revealed that many of our members don't realize how extensively the Disneyana Fan Club supports charities. So we asked our chapters to report on their latest contributions.

### Star of the North Chapter

The year 2016 marks the 25<sup>th</sup> Anniversary of the chapter. Over these years, we have contributed tree ornaments and toys to various charities and hospitals in the Minneapolis/St. Paul area. We have made cash donations to food shelves, Salvation Army, American Heart Association, American Diabetes Association.

There have been times when a member is personally involved with a charity and requests the chapter's support. We have fulfilled a hospice's "wish list" booklist to be used for grief support groups for children, supported a college student member in a dance-a-thon for a Pediatric Oncology Department and donated new toiletries for use by foster children.

Donations have also been made to honor and reflect the lives of chapter members who have died. There is a Disney brick in front of Magic Kingdom, Florida because of the love for anything Disney and a tree in a local Japanese garden for being a volunteer at the garden. One of our members was selected as Veteran of the Day at WDW and also was selected to take an Honor Flight to Washington, D.C. from Minnesota. The chapter honored him by making a contribution to Honor Flight so that another veteran may have the same opportunity.

Over the past 25 years, the Star of the North Chapter has made it a priority to make thoughtful donations to our community and to make "Magical Moments".

Roxanne Michelson  
President, Star of the  
North Chapter, Minnesota



Our giving spirit continued with a donation of more than two dozen books for children, teens, and parents to North Memorial Hospice of North Memorial Health Care in Robbinsdale, MN. The books are intended for use in the hospice lending library to help children and teens who are grieving or experiencing the death of a loved one.

### SW-British Columbia Chapter

Over the years we have supported many different kinds of charities. We have donated to Food Bank, Basic for Babies (which is local charity help family have baby supplies in cooler months). Last couple of years we have donated School Supplies to kids that can't afford to buy them and to the BC SPCA, providing old blanket, food and toys. We continue to support our local charities.

Chad Durrant,  
President, SW-British Columbia Chapter

### A Word About National Charities

As a national organization, the Disneyana Fan Club also supports Give Kids the World, Kissimmee, FL (<http://www.givekidstheworld.org/>) and Ryman Arts (<http://www.rymanarts.org/>). For over 30 years, GKTW has been hosting children with life-threatening illnesses and their families on its 79-acre resort. To see exactly what impact Ryman Arts is having, click on this logo on the home page and read 25 inspiring stories about RA alumni.



### World Chapter Elects Officers

"It has been a privilege and pleasure to serve as the President of the World Chapter of the Disneyana Fan Club. With the elections occurring on Saturday, April 30, 2016 my duties as president have ended." — Adria Smith, Immediate Past President

#### Recently elected officers

President — Oscar Smalls, Jr.  
Treasurer — Linda Lawriski  
Member at Large — Tony Caselnova  
Member at Large — Jim Lord  
Member at Large — Susan Muela



## Nor Cal Chapter

Two of Nor Cal DFC's biggest annual charity endeavors are Halloween treat bags for hospitalized children and our major support to a nearby community's Christmas holiday program that combines Toys for Tots, Coats for Kids and Food for Needy Seniors.



It's pretty common to think about children around Christmas, but Halloween is also a big deal to many of them. For several years, we

have assembled 50 treat bags and left them at a local hospital for very grateful nurses to distribute to appreciative hospitalized kids who miss out on trick or treating.

Because of dietary restrictions, the treat bags don't contain any food items, but we've included mini-beanbag plush toys, crayons, coloring pages, bouncing eyeballs, goofy straws, spider rings and dozens of stickers,



temporary tattoos and a Wendy's Frosty treat coupon. Each bag probably has a retail value of \$10-\$12. In addition, we've added a few copies of popular new release DVDs to the

hospital's entertainment library. Our small chapter's efforts for Dixon's Christmas program has been ongoing for more than 15 years and we've donated items totaling several hundred dollars of items annually, including hundreds of toys every year.

Leo Holzer  
President  
Northern California Chapter

## Land of Mickey Chapter

As our Chapter has been in existence since 1992, we have had many opportunities to do charitable work. Our most recent and current charitable cause is our local Ronald McDonald House, a new location in our area and just getting established. We have collected needed products, including cleaning supplies, personal care items, gift cards, and toys for their program.



In the past, we have contributed to many organizations in the greater Northern Illinois area. They include: school supplies and food stuffs for the Peoples Resource Center; toys for holiday gift giving for Mooseheart Child City and School and Family Shelter Services, a battered women's shelter; and personal care kits for a local homeless shelter. We have also made donations to Central DuPage Hospital, Little Friends of Naperville, local nursing homes, and adopting families during the winter holidays.

We recently auctioned off a collectible at a club meeting, the proceeds of which are going to provide a donation to the Walt Disney Birthplace as they seek funds to renovate the home.

Outside our area we have provided funds to allow the Leadership program students of Henry T. Gage Middle School (an L.A. area school in a low income area) to go to Disneyland during the 50th Anniversary.

In addition, we purchased a brick in Marceline to support the Walt Disney Hometown Museum and provided funds to Give Kids The World, Ryman Arts, and Make-A-Wish.

We believe in "spreading some Disney magic" for others in need and our members have done so in many ways for 24 years.

Northern Illinois Chapter, "The Land of Mickey"



# Speakers For DisneyanaMania 2016



The convention committee is proud to announce the following speakers for this year's convention. (Of course, all subjects, speakers, and events are subject to change without notice. But don't worry, it'll be great!)

## Mark Walsh

"Passing the Torch – How classic Disney inspired the modern animation at Pixar"

Mark Walsh was an animator and director at Pixar Animation Studios. He began his career at Pixar in August 1997, working on *A Bug's Life*, then progressed to storyboard work on *Toy Story 2*. He also worked on *Monsters, Inc.* and then became the directing animator of *Finding Nemo*. Other film credits include working a short while on *The Incredibles* before moving to *Ratatouille* as supervising animator, working on the DVD and promo production for *Up* and *Toy Story 3*, and directing Tom Hanks in recording sessions for a number of *Toy Story Toons* episodes. Most recently, he directed the short film *Partysaurus Rex*, where he voiced Drips the Whale. Mark left Pixar in 2015 and is now a director at Motion Entertainment, working on a VR short film called *Gary the Gull*.



Google Images

## Hope Freleng Shaw

Hope will talk about her father, Friz Freleng, and his early work with Walt (in Kansas City and on *Steamboat Willie*) and about his work run-



Google Images

ning animation at Warner Brothers. She'll also share some artwork and photos of Walt from the early days.

Friz was born Isadore Freleng on August 21, 1906 in Kansas City, Missouri. With no formal training in drawing, his first job as an animator was with United Film Advancement Services in 1924 at the age of 17. The first work Friz is credited with was for Disney Studios where he worked as an animator on the "Alice" series in 1927.

## Don & Ron DeFore

"Growing up in Disneyland – From the Opening Day Parade to Frontierland's Don DeFore's Silver Banjo Barbecue"

Don DeFore is best known for his work in television. Beginning in 1952, Don had a recurring role as the Nelsons' friendly neighbor, "Thorny", on the ABC sitcom "The Adventures of Ozzie and Harriet". In 1955, Don was nominated for Best Supporting Actor in a Regular Series Prime-time Emmy Award for his work on "The Adventures of Ozzie and Harriet." In time though, the role of Thorny was superseded by Lyle Talbot as Joe Randolph, and Mary Jane Croft as his wife, Clara.



Google Images

From 1954 to 1955, Don served as president of the National Academy of Television Arts & Sciences. He was instrumental in arranging for the Emmy Awards to be broadcast on national television for the first time on March 7, 1955. He also served on the board of

the Screen Actors Guild.

## Bob Gurr: Turning Dreams into Reality

### WORLD PREMIERE

With Bob Gurr: Christopher Crump, Garner Holt and Carlene Thei

The documentary, *Bob Gurr: Turning Dreams into Reality*, tells the story of one of Walt Disney's earliest 1954 Imagining Leg-ends. His career spanning 45 years. How he created 250 projects with Disney and beyond will be explored.



Ape Pen Publishing

## Authors Panel

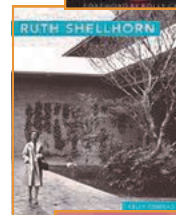
Lynn Barron & Ken Pellman –

*Cleaning The Kingdom: Insider Tales of Keeping Walt's Dream Spotless*



Kelly Comras –

*Ruth Shellhorn (Masters of Modern Landscape Design Series)*



Greg Triggs –  
*The Next Happiest Place on Earth*

Jeff Heimbuch –

Jeff is Brooklyn born and currently "California living."



Amazon.com

"For years, I have written about various topics in theme-park history for a variety of publications, including several fan sites and magazines. I also write a lot of fiction and non-fiction as

Continued on page 15



# DisneyanaMANIA

# 2016



## Early Registration **Extended Through June**

Register now for the Disneyana Fan Club *DisneyanaMania* Convention  
July 13 thru 16, 2016 at the Wyndham Anaheim Garden Grove Resort

Remember your membership entitles the entire family to attend at discounted prices (see below)

Early Registration must be postmarked no-later than **JUNE 30, 2016**

*Print (clearly) your and family members names as you want them to appear on your badges).*

Your Name	2nd Registrant	Under 12**
Address	3rd Registrant	Under 12**
City / State / Zip	4th Registrant	Under 12**
Telephone	5th Registrant	Under 12**
E-mail	Use reverse side for additional registrants	

### Opportunity Drawing Prizes

### John Hench DCA Inaugural Lithograph



This commemorative limited-edition lithograph features the Main Entrance of Disney's California Adventure with the Golden Gate Bridge icon, as depicted by Disney Legend & Senior Vice President at Walt Disney Imagineering, John Hench. The lithograph features Mickey Mouse as he presents the newest addition to the Disneyland Resort, Disney's California Adventure. Lithograph signed by John Hench. This piece has been custom framed with a selection of Pins from the opening of Disney's California Adventure.

### Pirates of the Caribbean Vinyl Figures



Inspired by Walt Disney's classic Disneyland attraction, Pirates of the Caribbean! Officially licensed collectible from a special collaboration between Disney and Span of Sunset. The Bird Head Skeleton Statue and Dog with Jailhouse Key. Sculpted by the talented Monster5, these pieces are limited editions.

### Choose a Package

<b>Fanatic Package (FP)</b>	July 13 - 16	Quantity	Total
Includes Convention Gift, all seminars, non-ticketed events, early admission to Disneyana Fan Club Show & Sale, and all <b>Convention Dining Events</b> .			
Celebration of Ryman Arts (Indicate quantity of each selection)			
____ Non-Vegetarian ____ Vegetarian ____ Special Diet			
Legend Lunch (Indicate quantity of each selection)			
____ Non-Vegetarian ____ Vegetarian ____ Special Diet			
Celebration Banquet (Indicate quantity of each selection)			
____ Beef Entrée ____ Chicken Entrée ____ Vegetarian ____ Special Diet			<b>\$340 each x ____ = ____</b>
<b>Enthusiast Package (EP)</b>	July 13 - 16	Quantity	Total
Includes Convention Gift, all seminars, non-ticketed events, & early admission to <i>Disneyana Fan Club Show &amp; Sale</i> . Does not include <b>Convention Dining Events</b> .			
			<b>\$270 each x ____ = ____</b>
<b>Groupie (Single Day) Package (GP)</b>	July 14, or 15	Quantity	Total
Includes seminars, non-ticketed events, Convention Dining Event - ONLY for day(s) chosen, & early admission to <i>Disneyana Fan Club Show &amp; Sale</i> .			
____ Thursday 7-14 Legend Lunch (Indicate quantity of each selection)			
____ Non-Vegetarian ____ Vegetarian ____ Special Diet			
____ Friday 7-15 Celebration Banquet (Indicate quantity of each selection)			
____ Beef Entrée ____ Chicken Entrée ____ Vegetarian ____ Special Diet			<b>\$150 each x ____ = ____</b>

### Convention Dining Events

<b>Ticket required for all attendees.</b>		Quantity	Total
Celebration of Ryman Arts (EP only)	\$99 - July 13	Ryman Arts	
(Indicate quantity of each selection)			
____ Non-Vegetarian ____ Vegetarian ____ Special Diet			<b>\$99 each x ____ = ____</b>
Legend Luncheon (EP & GP)	\$85 - July 14	Legend Luncheon	
(Indicate quantity of each selection)			
____ Non-Vegetarian ____ Vegetarian ____ Special Diet			<b>\$85 each x ____ = ____</b>
Celebration Banquet (EP & GP)	\$95 - July 15	Celebration Banquet	
(Indicate quantity of each selection)			
____ Beef Entrée ____ Chicken Entrée ____ Vegetarian ____ Special Diet			<b>\$95 each x ____ = ____</b>

Events and Appearances are subject to change.

[www.disneyanafanclub.org](http://www.disneyanafanclub.org)

**See you at the Wyndham!!**

1

"[Tinker Bell] has charm, spunk, willfulness, and a bold passion. She is not bland or passive; she reacts decisively and directly." — John Canemaker 13

# DisneyanaMANIA

A Collectible Opportunity

2016



## Animator Mickey







This retired hand painted Gallery Cel of Mickey Mouse titled "Animator Mickey" is by the artist, Jay Dyer.

This piece was available from the MGM Walt Disney Animation Studios in Florida between 1990 - 1997, it is one of the first edition of the Disney Gallery Cels.

## Splash Mountain Sculpture with Snow White Dwarfs



Art of Disney presents "Where Everyone is Happy, No Matter What Their Name Is". Disney Artist, Costa Alavezos really brings this incredible sculpture to life. Featuring four of the dwarves from Snow White having fun on Splash Mountain. Limited Edition of 1000.

Opportunity Drawing		Tickets \$1.00 Each	Quantity	Total
Description Follow				
Tickets also available at Convention				
				
John Hench Lithograph \$1.00 each x _____	Pirates of the Caribbean Figures \$1.00 each x _____	Animator Mickey \$1.00 each x _____	Splash Mountain Sculpture \$1.00 each x _____	
Total Tickets \$1.00 each x _____ = _____				
<b>Membership Renewal</b> <i>If your membership expires before July 31, 2016 renew now!</i> \$33 U. S. / \$39 Canada / \$49 International				\$33 - \$39 - \$49 = _____
<b>Total Amount Enclosed</b>				\$ _____

Whether you can make it to the DisneyanaMania Convention 2016 or not, you can still be part of the fun. This year's Opportunity Drawing offers four fantastic items. Here's the good news. You don't have to be present for the drawing to win. Winners will be notified by phone or e-mail and the prizes will be shipped postage paid. All you have to do is fill in your name (on the front page of this form) and the number of tickets you want for each item (on the back page of this form). Then return this form with your check to the address below. Tickets are only \$1.00 each. All ticket requests must be postmarked by June 30, 2016.

For Convention Registration-Mail both pages of this form with Check for payment or for Credit Cards, go to [Disneyanamania2016.eventbrite.com](http://Disneyanamania2016.eventbrite.com)

Disneyana Fan Club DisneyanaMania Convention  
Post Office Box 19212 Irvine, CA 92623-9212

## Got Convention and Registration Questions?

Call 714-731-4705 or e-mail us at: [brian@disneyanafanclub.org](mailto:brian@disneyanafanclub.org)

\* Please E-mail any Special Dietary requirements to the e-mail listed above.

\*\* Children under 12 admitted free with registered member at seminars and non-ticketed events. They must have ticket and badge for Convention Dining Events.

\*\*\* We regret that children under 5 years of age are not permitted at any convention seminar or food event.

To qualify for a refund all cancellation requests must be received in writing or by e-mail by June 30, 2016.

Disneyana Fan Club Show & Sale Exhibitor Contracts are mailed separately.

Show and Sale questions can be sent to Patti at 584 Explorer Street, Brea, Ca 92821 or [dfcpatti@aol.com](mailto:dfcpatti@aol.com) or by calling 714-264-7141.

\_\_\_\_\_ I am interested in being the sponsor of a Disneyana Fan Club Convention Event, please contact me.

**Please do not forget to include both pages of the registration form with your check. SPECIAL - Early Registration ends 6/30/2016 this form invalid after that date.**

[www.disneyanafanclub.org](http://www.disneyanafanclub.org)

**See you at the Wyndham!!**

2



## DisneyanaMania 2016 Speakers continued

well, for various places (mostly for myself). I do write some screenplays as well, and do a bit of acting. Trust me, nothing exciting. I currently write and produce *Return Home*, a serialized audio drama, and co-host *Communicore Weekly*, a popular theme-park podcast. I also think Animal Kingdom is a full-day park. I usually have 15 different projects going on at once."



It's Kind of a Cute Story

of Disney guests to host each table which always makes for a memorable evening. And at the end of the evening all monies raised goes directly to benefit Ryman Arts. So plan now to attend the wonderful event that is open to everyone regardless if you are attending the DisneyanaMania gathering or not. Registration is available on the Club's website. Hope to see YOU there!

### Thursday July 14th DFC Legends Luncheon Honoring Garner Holt

Garner Holt is founder of Garner Holt Productions in 1977, when he was still in high school.



Garner Holt Productions

It all started in his parents' garage - "with my mother acting as secretary!" - and has grown to a giant production facility, studio and mockup space where they operate today with the help of nearly a hundred talented employees.

"With a mission to inform, educate, and entertain, I believe our work and our creations have a lasting impact on our audience. This company is my main focus, my pride and

joy, and, if I may brag a little, the most unique and talented group in the world. We've built nearly 500 Chuck E. Cheese animatronic shows for restaurants all over the planet. We were the first outside company to create an animatronic character for a classic Disney attraction - we now have more than 400 figures in Disney parks throughout the world. In our more than three decades of work, we've built more animatronics and other unusual and amazing creations than any organization on the planet."

### Friday July 15th Banquet in Celebration of Alice In Wonderland's 65th Anniversary!

Please join us for our

"Curiouser and Curiouser Banquet" as we conclude this year's DisneyanaMania.

You never know who might show up for our tea party. So dust off your top hat, petticoat, and rabbit ears and come dressed to impress as your favorite Alice character for our costume contest.



Google Images

### Comedy Warehouse Reunion

#### Comedy Warehouse

(Formerly at Walt Disney World's Pleasure Island) - This improv comedy routine takes ideas from the audience and turns them into hilarious sketches right before your eyes. Whether the cast is asking for your input into a sketch or using you as the butt of the joke, Comedy Warehouse is always a lively time.



Google Images

### Meal Events:

**Wednesday July 13th, Welcome Dinner - Fund Raiser for Ryman Arts**



Once again we will kick off DisneyanaMania with our annual Ryman Arts fundraising event. It will be held on the evening of July 13th at the Wyndham Hotel in Garden Grove. As in the past, we have some wonderful items for our silent auctions and we are busy arranging some very exciting personalized "experiences" that will be a part of our live auction. As always, we will have plenty



## Alice in Wonderland

**April 1 — October 2**  
 Geppi's Entertainment Museum presents Matt Crandall's collection of art from Walt Disney's 1951 *Alice in Wonderland*. Included in the collection are original concept art, animation cels, theatrical posters, vintage toys and signed Alice memorabilia. On April 1st, our opening night special guest will be actress Kathryn Beaumont, who provided the voice and acted as the character model for Alice.

**DFC member Matt Crandall's *Alice in Wonderland* exhibit is appearing at the Geppi's Entertainment Museum, 301 W. Camden St., Baltimore, MD ,21201 until October 2, 2016.**

## Upcoming Events

**June 11-12 2016 — Dayton Disneyana 2016, Holiday Inn, Fairborn, OH, visit <http://daytondisneyana.org/> for details.**

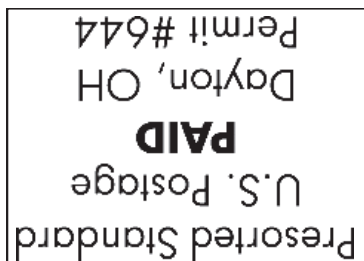
**July 13, 2016 — Evening to Benefit Ryman Arts, Wyndham Anaheim/Garden Grove Hotel, 12021 Harbor Blvd., Garden Grove CA, 92840.**

**July 13-15, 2016 — 2016 DisneyanaMania Convention, Wyndham Anaheim/Garden Grove Hotel, 12021 Harbor Blvd., Garden Grove CA, 92840.**

**Saturday, July 16, 2016 — Disneyana Collectible Show & Sale, Wyndham Anaheim/Garden Grove Hotel, 12021 Harbor Blvd., Garden Grove CA, 92840.**

**December 19, 2016 — First performance of the Disneyana Fan Club theme song at Walt Disney World and by a marching band.**

**For more information on these and other DFC events, visit us on the Web at [www.disneyanafanclub.org](http://www.disneyanafanclub.org).**



**Disneyana Fan Club**  
**P.O. Box 19212**  
**Irvine, CA 92623-9212**  
**RETURN SERVICE REQUESTED**

