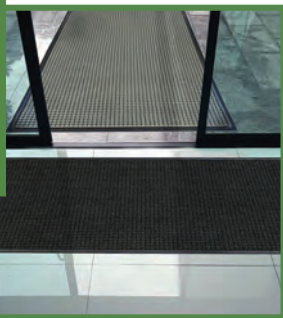


# WATER HOG BOX MAT

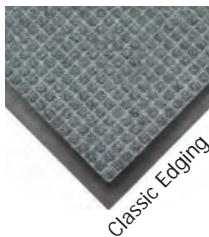
- Unique ridged construction effectively traps dirt & moisture beneath shoe level.
- Cleans and Dries foot traffic on a daily basis. WaterHog mats can hold up to 1.5 gallons of water per square yard.
- Exclusive rubber-reinforced face nubs prevent pile from crushing under high traffic areas, maintaining high performance & extending product life.
- Anti-static, Fade & Stain Resistant, Solution-dyed 100% Nylon fabric is resistant to staining, dries quickly, and will not fade or rot.
- Feature 78-mil SBR rubber backing.



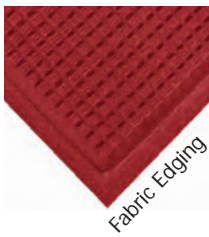
◀ great for trapping dirt and moisture from entrances



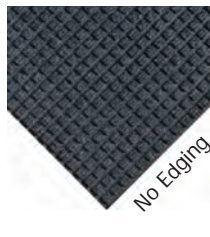
▶ for indoors and semi-outdoor areas with shading from direct sunlight and rain.



Classic Edging

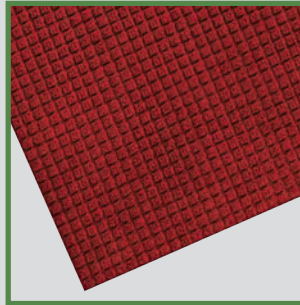


Fabric Edging

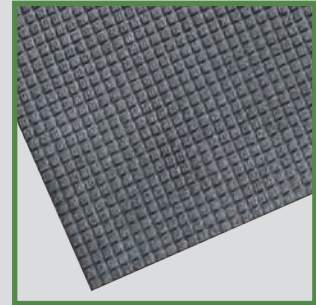


No Edging

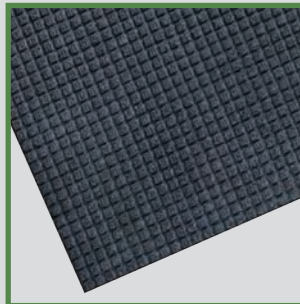
## COLOR SELECTION



Red



Grey



Blue

\*Colors may differ at different angles and distances and may not represent the exact color of the product.



Surface Material	Solution-dyed Polypropylene with 100% Nylon
Backing Material	SBR rubber backing
Profile Height	6mm
Size	Customizable size and shape
Roll Form Size	6' x 60 4' x 60 Customized sizes are available

\*Technical specifications and features may change without prior notice.

\*2 years warranty on manufacturing defects.

\*Due to normal variances in production, exact size of mats cannot be guaranteed. A variance of 3-5% can be expected on all mat sizes.

