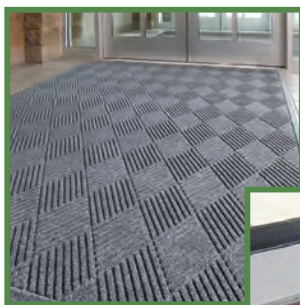


# WATER HOG DIAMOND MAT

- Cleans and Dries foot traffic on a daily basis. WaterHog mats can hold up to 1.5 gallons of water per square yard
- Exclusive rubber-reinforced face nubs prevents pile from crushing under high traffic area, maintaining high performance & extending product life.
- Anti-static Fade & Stain Resistant, Solution-dyed Nylon fabric is resistant to staining, dries quickly, and will not fade or rot
- Easy cleaning with either vacuum or hose off.
- Feature 78-mil Nitrile rubber backing with 1200g/sqm needle punch PP+100% Nylon



◀ able to be used for semi-outdoor areas, where the mat is kept away from rain while still trapping wet footfalls.



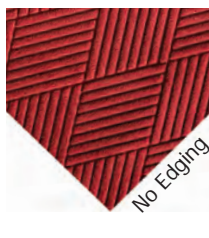
used in entrances to reduce dirt and moisture from foot traffic. ▶



Classic Edging

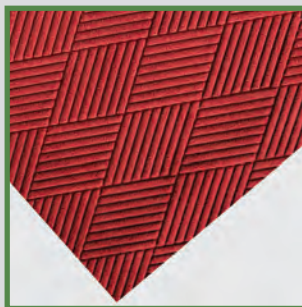


Fabric Edging

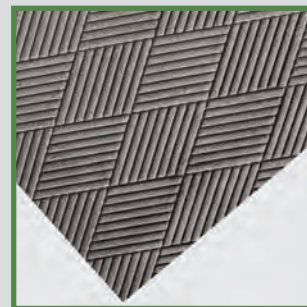


No Edging

## COLOR SELECTION



RED



Grey

\*Colors may differ at different angles and distances and may not represent the exact color of the product.

Surface Material	Solution-dyed Polypropylene with 100% Nylon
Backing Material	SBR rubber backing
Profile Height	6mm
Size	Customizable size and shape
Roll Form Size	6' x 60' Customizable sizes are available



\*Technical specifications and features may change without prior notice.

\*2 years warranty on manufacturing defects

\*Due to normal variances in production, exact size of mats cannot be guaranteed. A variance of 3-5% can be expected on all mat sizes.

