



## MATERIALS

**Red Heart® Super Saver®** (7 oz/198 g; 364 yds/333 m)

**Contrast A** Medium Thyme (406)

**1 ball or 28 yds/26 m**

**Contrast B** Light Sage (631)

**1 ball or 28 yds/26 m**

Note: 1 ball each of Contrast A and B will make 11 Blocks.

Size U.S. H/8 (5 mm) crochet hook **or size needed to obtain gauge.**  
Yarn needle.



CROCHET | SKILL LEVEL: **EASY**

## ABBREVIATIONS

**Approx** = Approximately

**Beg** = Beginning

**Ch** = Chain(s)

**Cluster** = (Yoh and draw up a loop in next stitch. Yoh and draw through 2 loops on hook) 5 times. Yoh and draw through all loops on hook.

**Cont** = Continue(ity)

**Dc** = Double crochet

**Pat** = Pattern

**Rem** = Remain(ing)

**Rep** = Repeat

**Rnd(s)** = Round(s)

**RS** = Right side

**Sc** = Single crochet

**Sl st** = Slip stitch

**St(s)** = Stitch(es)

**WS** = Wrong side

**Yoh** = Yarn over hook

## MEASUREMENTS

Approx 7" x 9" [18 x 23 cm].

## GAUGE

13 sc and 14 rows = 4" [10 cm].

## INSTRUCTIONS

### Notes:

- To join new color, work to last 2 loops on hook of previous color. Yoh with new color, draw through rem loops and proceed with new color.
- Ch 3 at beg of rows counts as dc.

## Blanket Block

With A, ch 21 (multiple of 6 ch + 3).  
See diagram on page 2.

**Set-up row:** (RS). With A, 2 dc in 4th ch from hook. Skip next ch. 1 sc in next ch. (Skip next 2 ch. 5 dc in next ch. Skip next 2 ch. 1 sc in next ch) twice. Skip next 2 ch. 3 dc in last ch. Join B. Break A. Turn.

**1st row:** (WS). With B, ch 1. 1 sc in first dc. (Ch 2. Cluster. Ch 2. 1 sc in next dc) 3 times, working last sc in top of turning-ch 3. Join A. Break B. Turn.

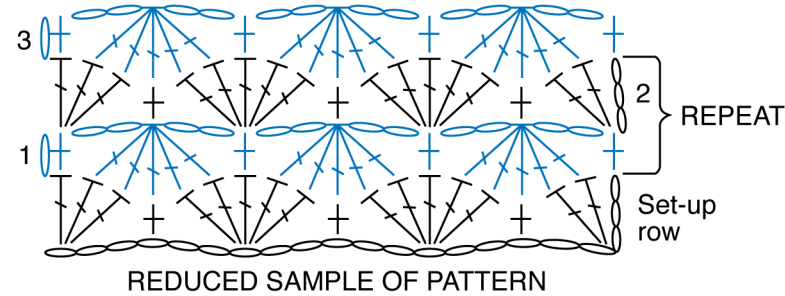
**2nd row:** With A, ch 3. 2 dc in first sc. 1 sc in next Cluster. (5 dc in next sc. 1 sc in next Cluster) twice. 3 dc in last sc. Join B. Break A. Turn.

Last 2 rows form Pat.

Cont in Pat until work from beg measures approx 7¾" [19.5 cm], ending on a 1st row. **Do not** fasten off.

**Edging: 1st rnd:** (RS). With A, ch 1. Work sc evenly around Block working 3 sc in each corner. Join with sl st to first sc.

**2nd rnd:** Ch 1. 1 sc in each sc around, working 3 sc in each corner sc. Join with sl st to first sc. Fasten off.



## STITCH KEY

- = chain (ch)
- ⊥ = single crochet (sc)
- ⌈ = double crochet (dc)
- ⌘ = cluster