

EXPLORER CHART BIM 1 BIMINI ISLANDS

SCALE 1:50,000 @ 26° LAT
MAP DATUM WGS 84 - MERCATOR PROJECTION

SOUNDINGS IN METERS
(AND DECIMETERS UNDER FIVE METERS)
REDUCED TO THE APPROXIMATE LEVEL
OF LOW WATER SPRINGS
HEIGHTS IN METERS ABOVE MEAN SEA LEVEL
© 2009 LEWIS OFFSHORE LTD

JOINS CHART 5 (PAGE 15)

CAUTION: The position of all features is approximate and portions of this chart are unsurveyed. The publisher assumes no liability for omissions, errors or alterations and advises that any use of this chart for navigational purposes is done at the mariner's risk. The prudent mariner will not rely solely on any single aid to navigation.

NOTE: VPR (Visual Piloting Rules) apply in areas covered in this chart. Good weather, sunlight, bottom reading and piloting skills required.

CONVERSION TABLE

M	FT	M	FT
1	3.3	26	85.3
2	6.6	27	88.6
3	9.8	28	91.9
4	13.1	29	95.1
5	16.4	30	98.4
6	19.7	31	101.7
7	23.0	32	105.0
8	26.3	33	108.3
9	29.5	34	111.6
10	32.8	35	114.8
11	36.1	36	118.1
12	39.4	37	121.4
13	42.7	38	124.7
14	45.9	39	128.0
15	49.2	40	131.2
16	52.5	41	134.5
17	55.8	42	137.8
18	59.1	43	141.1
19	62.4	44	144.4
20	65.6	45	147.6
21	68.9	46	150.9
22	72.2	47	154.2
23	75.5	48	157.5
24	78.7	49	160.8
25	82.0	50	164.0

MAGNETIC VARIATION 6° 19' W (2009)
ANNUAL CHANGE 5' W

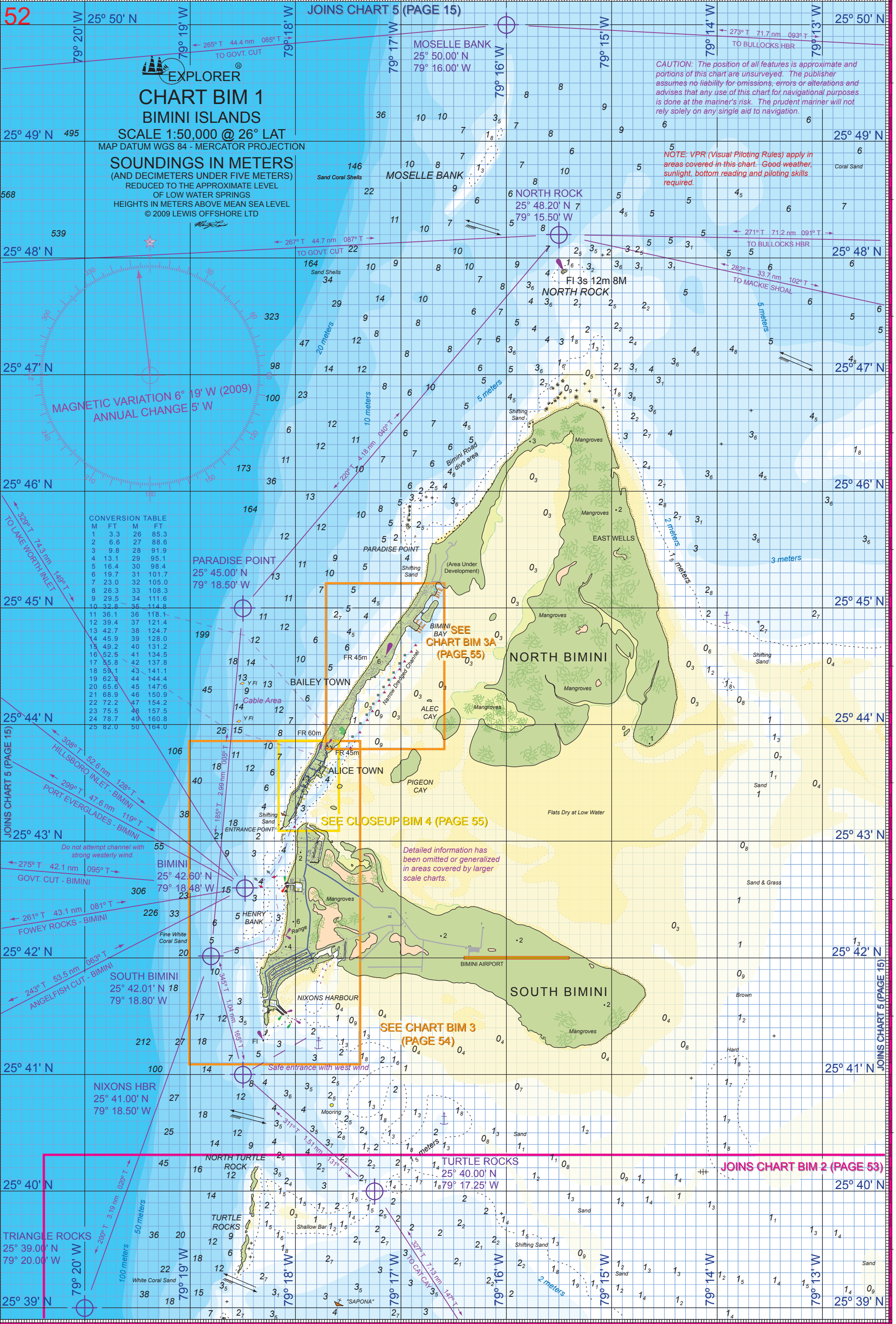
PARADISE POINT
25° 45.00' N
79° 18.50' W

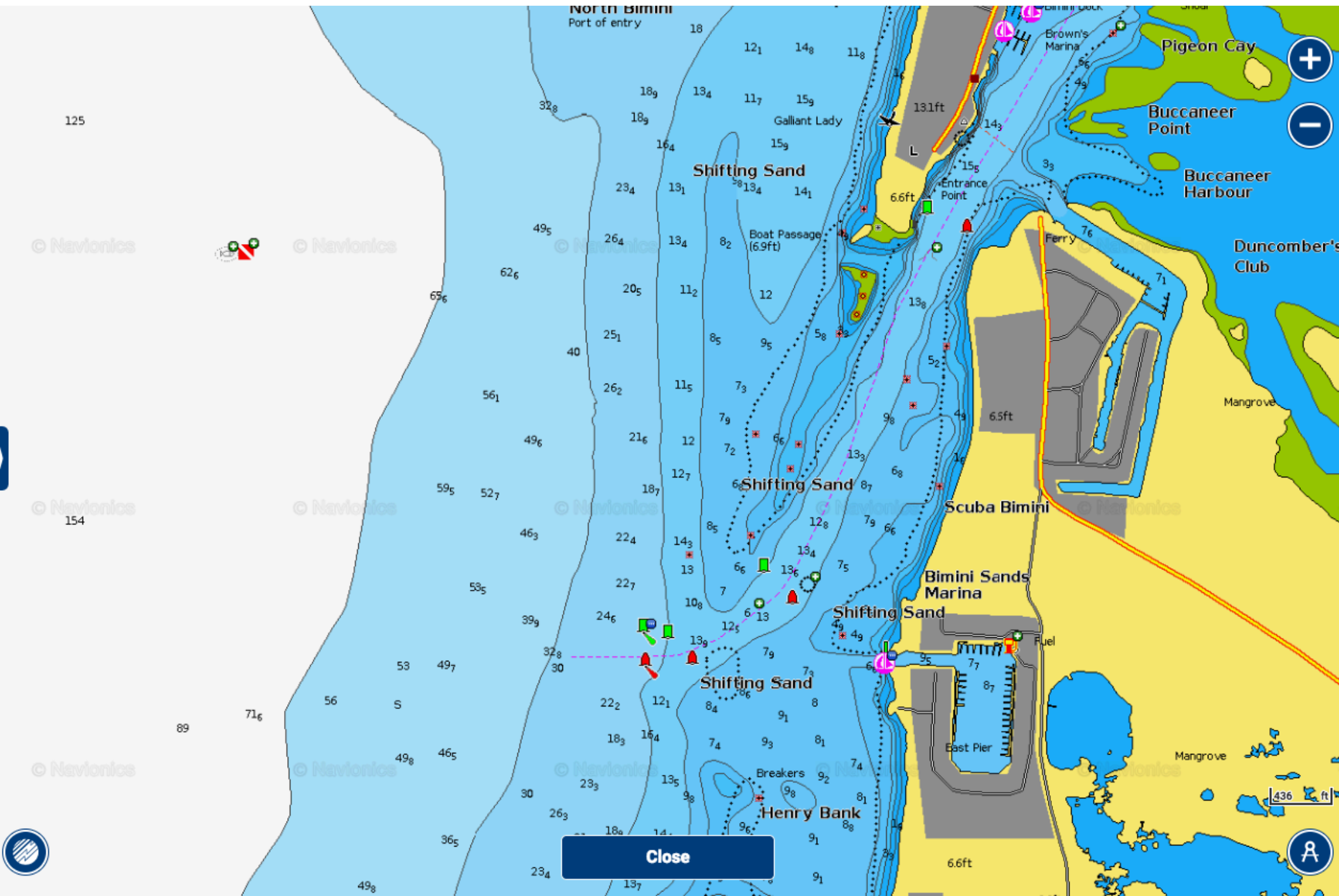
SEE CHART BIM 3A
(PAGE 55)

SEE CLOSEUP BIM 4 (PAGE 55)

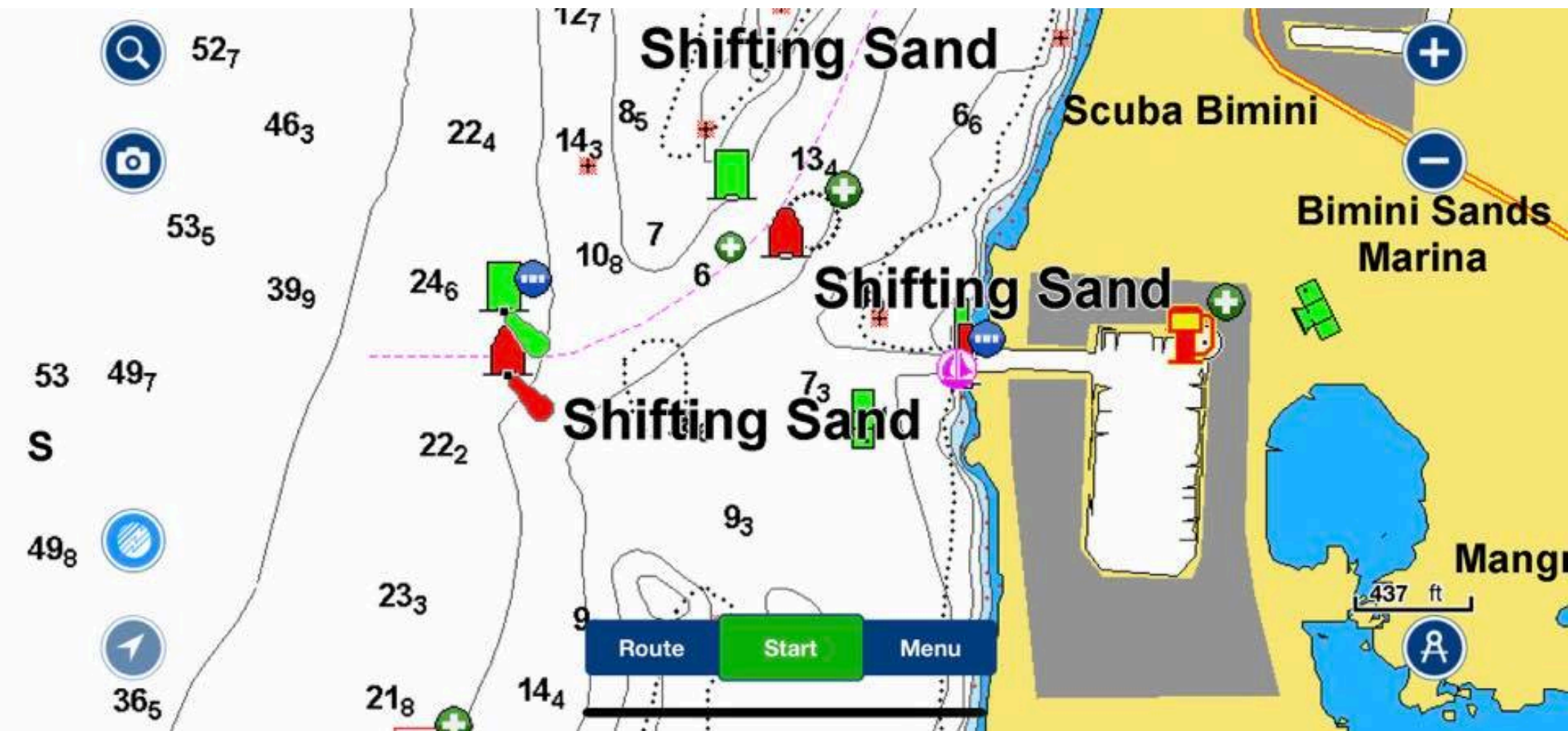
SEE CHART BIM 3
(PAGE 54)

JOINS CHART BIM 2 (PAGE 53)





Close





Screen Shot 2018-05-04 at 08.28.42.png



