



ASC

AVIATION SUPPORT CENTER



BROCHURE AVIATION REFUELLER

5000 GLS

[www.https://aviationsupportcenter.one/home](https://aviationsupportcenter.one/home)

Our company

At Aviation Support Center, we are proud to present ourselves as a leading company in the aeronautical field.

Our track record is a testament to the trust we have earned globally. Proven expertise and an unwavering commitment to excellence are the cornerstones of our identity. At Aviation Support Center, we are more than a company; we are a catalyst for positive change in the aviation industry.

We remind you to join us on this exciting journey into a world of innovation, uncompromising quality and products that transcend the norm. At Aviation Support Center, the sky is not the limit, it's the beginning of something extraordinary.

Innovative Refuellers, Unmatched Reliability

AVIATION REFUELLERS

Any Chassis, Any Capacity

Refuel International Aviation Refuellers (bowsers) are designed for efficient and safe aircraft refuelling at any location; transferring fuel into an aircraft from its vehicle mounted storage tank via a pump, filter and metering system. Our proven designs incorporate innovation coupled with components which are compliant with the international aviation industry standards. All of our refuellers are designed to achieve fast and efficient flow rates.

When designing the refuelling module structure; we work towards minimising the overall size while maximising the amount of components that fit within. This facilitates ease of pre-fabrication and also ease of transferring the refuelling module to another truck if required.

Internationally this makes our product offering more appealing as our modules are easily integrated onto any make of chassis by our International integration partners all over the world.

Our refuellers (bowsers) are integrated with a rigid chassis or prime mover and trailer combinations. Product tanks have capacities ranging from 2600L to 23,000L (on a rigid chassis) or articulated refuellers which have tank capacities of 23,000L and larger. Designed specifically for aviation fuels, all units are built to the customer's specification and are equipped with everything needed, to customer specific requirements.



VEHICLE

INTERNATIONAL MV607



Strench:

- GVWR
- 21,500 - 54,600 lbs
- 4X2:
 - MV607: 21,500 – 44,700 lbs (max. 37,000 with a Cummins B6.7)
 - MV60H: 20,000 – 29,000 lbs (limited by frame rail)
- 6X4:
 - MV607: 44,000 – 54,600 lbs

Drivetrain:

- Engines
- Cummins® B6.7:
 - 200 hp, 520 lb.-ft. torque, up to 325 hp, 750 lb.-ft. torque
- Cummins® L9:
 - 260 hp, 860 lb.-ft. torque, up to 360 h, 1,150 lb-ft torque



Other components

Alternators

12 Volt 160 - 325 amp

Meritor:

- **Battery systems**

12 Volt, 2 to 3 Batteries, 1,320 - 3,450 CCA

- **Brakes**

Hydraulic Disc with Four Channel ABS, Optional Traction Control

Air Brakes with ABS, Optional Traction Control, Optional Electronic Stability Program with Traction Control

- **Electrical systems**

Diamond Logic® Electrical System



Our company

At Aviation Support Center, we are proud to present ourselves as a leading company in the aeronautical field.

Our track record is a testament to the trust we have earned globally. Proven expertise and an unwavering commitment to excellence are the cornerstones of our identity. At Aviation Support Center, we are more than a company; we are a catalyst for positive change in the aviation industry.

We remind you to join us on this exciting journey into a world of innovation, uncompromising quality and products that transcend the norm. At Aviation Support Center, the sky is not the limit, it's the beginning of something extraordinary.

Innovative Refuellers, Unmatched Reliability

AVIATION REFUELLERS

Any Chassis, Any Capacity

Refuel International Aviation Refuellers (bowsers) are designed for efficient and safe aircraft refuelling at any location; transferring fuel into an aircraft from its vehicle mounted storage tank via a pump, filter and metering system. Our proven designs incorporate innovation coupled with components which are compliant with the international aviation industry standards. All of our refuellers are designed to achieve fast and efficient flow rates.

When designing the refuelling module structure; we work towards minimising the overall size while maximising the amount of components that fit within. This facilitates ease of pre-fabrication and also ease of transferring the refuelling module to another truck if required.

Internationally this makes our product offering more appealing as our modules are easily integrated onto any make of chassis by our International integration partners all over the world.

Our refuellers (bowsers) are integrated with a rigid chassis or prime mover and trailer combinations. Product tanks have capacities ranging from 2600L to 23,000L (on a rigid chassis) or articulated refuellers which have tank capacities of 23,000L and larger. Designed specifically for aviation fuels, all units are built to the customer's specification and are equipped with everything needed, to customer specific requirements.



•Front axles

8,000 - 14,700 lbs.

8,000 - 14,700 lbs.

Dana Spicer:

Meritor:

• Front suspensions

8,000 - 14,700 lbs.

Spring Parabolic Taper Leaf

•Rear axles

Meritor: 13,500 - 30,000 lbs.

Dana Spicer: 13,500 - 30,000 lbs.

Single (4x2)

Tandem (6x4)

Meritor: 34,000 - 40,000 lbs.

Dana Spicer: 40,000 lbs.

•Rear suspencios

IROS Air Suspension Available for Single and Tandem Axle

Spring Single VariRate:

13,500 - 31,000 lbs.

34,000 - 40,000 lbs. (6x4)

Tandem, 4-Spring Multileaf:

•Transmissions

1000, 2000, 3000 Series (HS, EVS, RDS, MH) Automatic

10-speed Fully Automated Manual

Allison:

Eaton Fuller Advantage



TANK 5000 gls

- REEL V-A40-19-21 ALUMINIO
- REEL V-A5218-70-72-24
- HOSE 1-1/2" 100 FT EL1529/2014
- HOSE 2" 100 FT EL1529/2014
- STATIC REEL 100 FT
- PRESSURE REFUELING NOZZLE 2-1/2" HECV
MECH 100
- Overwing Aircraft Nozzles 295SAJ – JET FUEL
- PUMP 03H1-LG
- FILTER SS633FB-5
- FILTER CAA43-5SB
- BYPASS PRESSURE RELIEF VALVE6533220
- COUNTER M-25-2
- HOUSING HCS-D-343-133
- CLOSED CIRCUIT FUEL SAMPLER JM-3001-2
- VALVE 150 PSI
- FUEL DEFUEL VALVE FER 9048
- 1 BOTTOM VALVE F614A 1500

•Front axles

8,000 - 14,700 lbs.

8,000 - 14,700 lbs.

Dana Spicer:

Meritor:

• Front suspensions

8,000 - 14,700 lbs.

Spring Parabolic Taper Leaf

•Rear axles

Meritor: 13,500 - 30,000 lbs.

Dana Spicer: 13,500 - 30,000 lbs.

Single (4x2)

Tandem (6x4)

Meritor: 34,000 - 40,000 lbs.

Dana Spicer: 40,000 lbs.

•Rear suspencios

IROS Air Suspension Available for Single and Tandem Axle

Spring Single VariRate:

13,500 - 31,000 lbs.

34,000 - 40,000 lbs. (6x4)

Tandem, 4-Spring Multileaf:

•Transmissions

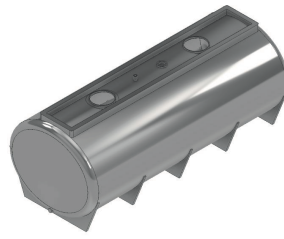
1000, 2000, 3000 Series (HS, EVS, RDS, MH) Automatic

10-speed Fully Automated Manual

Allison:

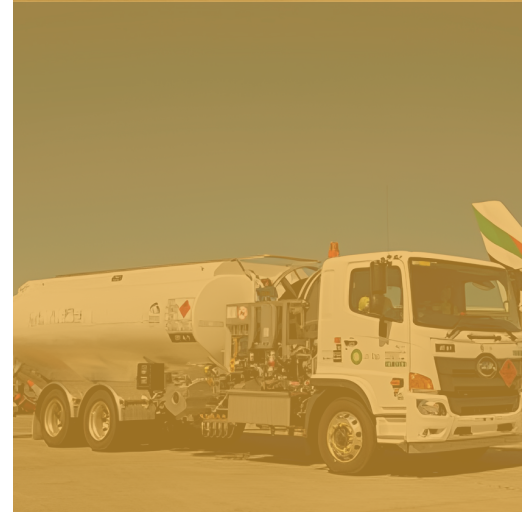
Eaton Fuller Advantage



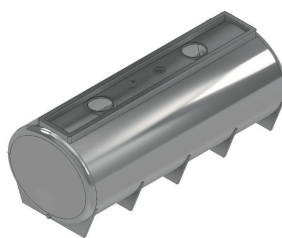


- SENSOR F613c
- 2 DRAIN VALVES fig 372
- 1 BOTTOM VALVE F614A
- NOZZLE F419
- WARNING LIGHTS
- COMUNICATION SYSTEM VHF ICOM-IC-A110
- VALVULAS BOLA 3/4" INOX 2
- AIR SET INLINE PRESSURE CONTROL VALVE F376
- GTP2916 CHECK VALV 3/4" NPT
- GTP21C AIR ELIMINATOR
- GTP 803S PRESSURE RELIEF VALVE 3/4"
- GTP-7
- MANHLE DOT406 20"

DIAMETER OF THE DISTRIBUTION PIPE CAN BE 2", 3", 4"



- SENSOR F613c
- 2 DRAIN VALVES fig 372
- 1 BOTTOM VALVE F614A
- NOZZLE F419
- WARNING LIGHTS
- COMUNICATION SYSTEM VHF ICOM-IC-A110
- VALVULAS BOLA 3/4" INOX 2
- AIR SET INLINE PRESSURE CONTROL VALVE F376
- GTP2916 CHECK VALV 3/4" NPT
- GTP21C AIR ELIMINATOR
- GTP 803S PRESSURE RELIEF VALVE 3/4"
- GTP-7
- MANHLE DOT406 20"



DIAMETER OF THE DISTRIBUTION PIPE CAN BE 2", 3", 4"

