

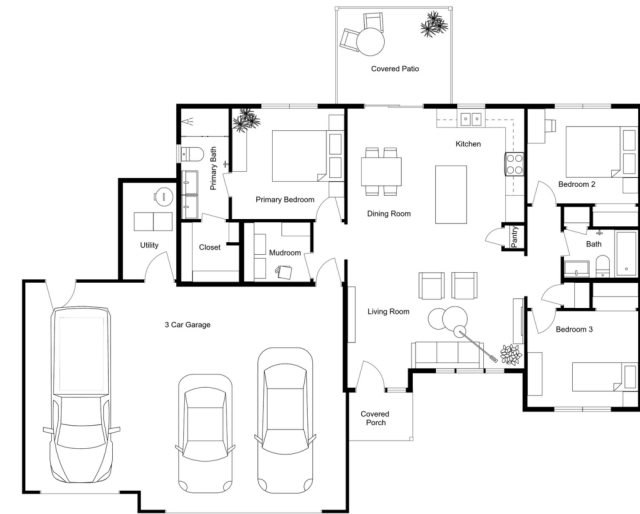
1149 W Trek TRAILS END
GODDARD, KS 67052

\$322,000



Where suburban small town meets the countryside - Trails End Goddard. Perfect for active lifestyles this Brand new residence is a convenient, cozy, 3 bedroom split floor plan, two full bathrooms and large 3 car garage, with covered front and back patios, modern finishes on a cul-de-sac circle in quiet west Goddard, KS. - Private primary suite has bathroom, walk-in closet and shower. - Open-concept living and dining area - perfect for entertaining - Modern kitchen with large island eating bar and pantry for extra storage - Quartz countertops in kitchen and both bathrooms - Spacious laundry/mud room - - Nine -foot ceilings and TEN foot coffered ceiling in the main living area - All kitchen appliances provided, including refrigerator - just bring your washer and dryer! Community amenities abound! including: POOL, STORM SHELTER, PLAYGROUND, PONDS and adjacent to the PRAIRIE SUNSET TRAIL hike/bike easterly to West Wichita, Pawnee Prairie Park or west to Garden Plain. Walk to 4 Goddard schools!! Commercial conveniences nearby. construction upgrades include: 2X6 walls, R-19 insulation, 40in footing/foundation, category 3 roof shingles all exceed standard local building codes. Come get a sneak peak before it is complete!

3 BED 2 BATH 3 CAR GARAGE
1,332 SF



Trails End neighborhood is located within walking distance to several Goddard Schools. Adjacent to the Prairie Sunset bike/walk trail connecting Goddard to Wichita. The community includes ponds, playground, storm shelter and pool.
HOA: \$56mo
Est General Taxes: \$375/mo
Est Specials once assessed: \$252/mo



Bree Russell, CCIM 316-516-7417
Bree@RussellRealResources.com

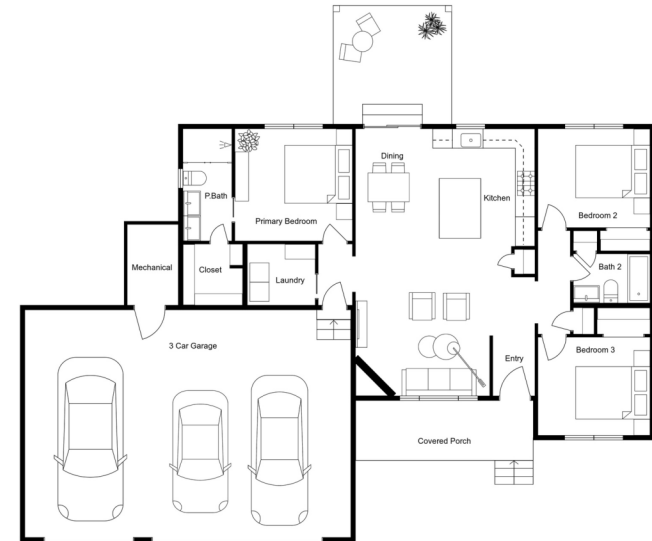
1145 W Trek TRAILS END GODDARD, KS 67052

\$318,000



Come get this home reserved before it is complete! Craftsman ranch with zero steps, functional floor plan on the doorstep to the countryside at Trails End Goddard. This brand new home is perfect for active lifestyles. Enjoy this convenient, cozy, 3 bedroom split floor plan, two full bathrooms and large 3 car garage, with covered front and back patios, modern finishes on a cul-de-sac circle in quiet west end of Goddard, KS. • Private primary suite has bathroom, walk-in closet and shower. • Open-concept living and dining area — perfect for entertaining • Modern kitchen with large island eating bar and pantry for extra storage • Quartz countertops in kitchen and both bathrooms • Spacious laundry/mud room • • All kitchen appliances provided, including refrigerator — just bring your washer and dryer! Community amenities abound! including: POOL, STORM SHELTER, PLAYGROUND, PONDS and adjacent to the PRAIRIE SUNSET TRAIL hike/bike easterly to West Wichita, Pawnee Prairie Park or west to Garden Plain. Walk to 4 Goddard schools!! Commercial conveniences nearby. construction upgrades include: 2X6 walls, R-19 insulation, 40in footing/foundation, category 3 roof shingles all exceed standard local building codes.

3 BED 2 BATH 3 CAR GARAGE
1,332 SF



Trails End neighborhood is located within walking distance to several Goddard Schools. Adjacent to the Prairie Sunset bike/walk trail connecting Goddard to Wichita. The community includes ponds, playground, storm shelter and pool.
HOA: \$56mo
Est General Taxes: \$375/mo
Est Specials once assessed: \$252/mo



Bree Russell, CCIM 316-516-7417
Bree@RussellRealResources.com