

# MILLSTREAM VALLEY SNOWMOBILE CLUB



## Legend

- Provincial trails .....
- Local trails .....
- Public Highways .....
- Warming Shelter .....
- Caution Ice Crossing ....

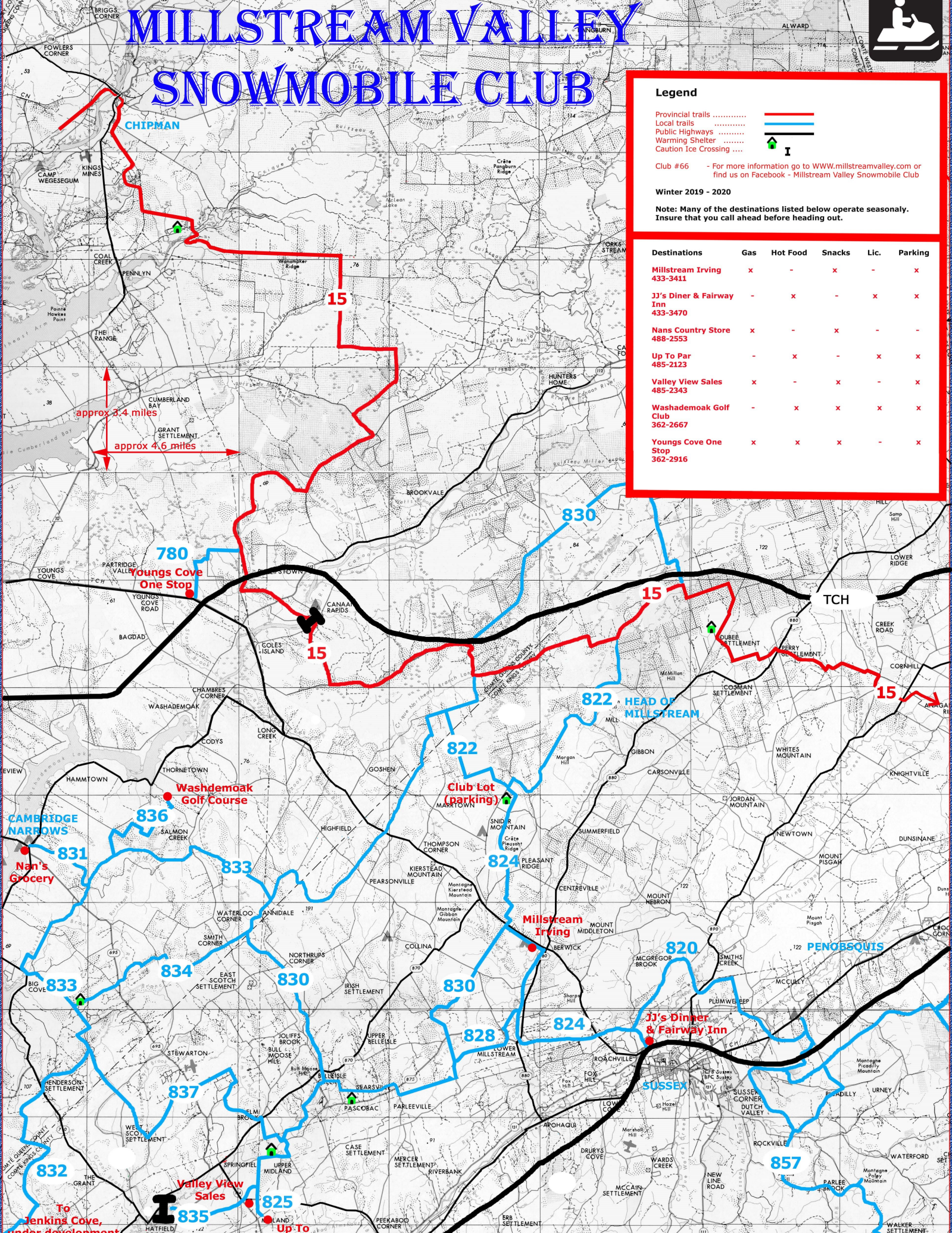


Club #66 - For more information go to [WWW.millstreamvalley.com](http://WWW.millstreamvalley.com) or find us on Facebook - Millstream Valley Snowmobile Club

Winter 2019 - 2020

Note: Many of the destinations listed below operate seasonally. Insure that you call ahead before heading out.

Destinations	Gas	Hot Food	Snacks	Lic.	Parking
<b>Millstream Irving</b> 433-3411	x	-	x	-	x
<b>JJ's Diner &amp; Fairway Inn</b> 433-3470	-	x	-	x	x
<b>Nans Country Store</b> 488-2553	x	-	x	-	-
<b>Up To Par</b> 485-2123	-	x	-	x	x
<b>Valley View Sales</b> 485-2343	x	-	x	-	x
<b>Washdemoak Golf Club</b> 362-2667	-	x	x	x	x
<b>Youngs Cove One Stop</b> 362-2916	x	x	x	-	x



To Jenkins Cove, under development