

Owners Meeting

January 29th, 2026



South Seas

TABLE OF CONTENTS

1. Introduction
2. Resort Operations Update
3. Food & Beverage Update
4. Sales & Marketing Update
5. Owner Relations Update
6. South Seas Build Back & Future Amenities



Introduction

Shawn Farrell

Key Updates for South Seas Owners & Guests

- ❖ **We are offering a better than ever experience!** Now open: Jet Ski Tours, Boat Rentals, Bayview Fishing Pier Experience, firepits and outdoor games in multiple areas, 7 different spots for Food and Beverage, Golf, Marina operations, 2 different full-service water amenity destinations, kids club, arcade and 2 ½ miles of the unbelievable beaches with chair and umbrella service with some of the best shelling in the world.
- ❖ Captiva Landing is now OPEN.
- ❖ Increase of Revenue and Occupancy, with strong season kick-off.
- ❖ **Club Captiva** membership information and enrollment documents are available through Bob Walter, Marina Bloetz, and the Owner Relations team for those interested in joining.
- ❖ **Time Share & Club Captiva** applications are available with Julisa and the Owner Relations team for 2026!



Resort Operations Update

Marina Bloetz

Resort Operations Update – Experiences

The Shops at South Seas

- ❖ OPEN daily for your shopping pleasure!
- ❖ Starbucks 6:30am-6pm
- ❖ Provisions 8am-6pm
- ❖ Spirits 10am-6pm
- ❖ Outfitters 10am – 6pm
- ❖ South Seas Real Estate office Mon- Fri 10am–5pm Sat 10am-4pm



And our partners at The Shops of South Seas

- ❖ J McLaughlin 9:30am-5:30pm
- ❖ Everything But Water coming soon, in build-out process.
- ❖ Lilly Pulitzer is open, daily 10am-5pm.

Resort Carts & Bike Rental

- ❖ 4-seater and 6-seater golf carts available to rent.
- ❖ Kids and Adult Bike rentals are available at the Resort Cart Rental location.
- ❖ Charging stations are available at the south and north end of the property. Please use these dedicated areas to park resort carts.



Resort Operations Update – Experiences



Yacht Harbor

- ❖ Yacht Harbor open daily 8am-4pm
- ❖ Full services Marina including dockage, fuel, retail and fishing guides available for charters.
- ❖ Overnight dockage available.
- ❖ Please contact our Marina Team at 855-777-3625 for slip reservations, trailer storage recommendation or private charter bookings.

Captiva Landing Marina

- ❖ Captiva Landing Marina open for dockage and boat launching.
- ❖ Guided Kayak tour on Pine Island Sound.
- ❖ Guided JetSki tours, choose 3-hour or 4-hour option with Cabbage Key stop.
- ❖ Boat Rental available, Center console and Pontoon Boat.

Resort Operations Update – Experiences

Fitness Center

- ❖ Fitness center open 5am-8pm next to the Registration Building.

Trolley Operations

- ❖ Trolley operating daily from 8am-10pm, departs every 15 min. Follow us on the Trolley Tracker. All owners and guests on property are welcome to use the Trolley.

Bayview Pool, South & Sunset Beach operations

- ❖ Pool operations 9am–6pm daily.
- ❖ Rentals for Cabana, Bayview Lookout and Bayview Serentiy Loungers available.
- ❖ South and Sunset Beach operations 10am-Sunset.
- ❖ Family Games at Bayview Lawn and Sunset Beach.
- ❖ Paddle Boards, Tandem Kayaks, and Single Kayaks are available at Sunset Beach available 9am-4pm daily.



Resort Operations Update – Experiences



Captiva Landing – Now Open!

- ❖ Water Park: Open Daily 9am – 5pm
- ❖ Bottlenose Bay: Open Daily 9am – 5 pm with a 45min closure daily from 1pm – 1:45pm for safety checks.
- ❖ Flippers: Open Daily 9am – 6pm
- ❖ The Arcade: Open Daily 9am – 8:30pm
- ❖ Camp-tiva: Open Daily for play time from 9am – 5pm. Coming soon with Half Day, Full Day and Kids Night out offering.
- ❖ Captiva Landing offers all kinds of excitement with Bottlenose Bay's six waterslides, tipping bucket and interactive fun zone to Gulfstream Lazy River and Cove Pool for a laid pack pool experience.
- ❖ 14 cabanas available for daily rental at Bottlenose Bay, Gulf Stream and Cove Pool. Make your reservation with our App today.

Resort Operations Update – Captiva Landing Opening



Resort Operations Update – Experiences



The Clutch Golf Course & Club House

- ❖ Open Tuesday through Sundays from 8am to 6pm, closed Mondays.
- ❖ Family-friendly walking course designed for all ages, enjoyable for advanced golfers and beginners.
- ❖ Club Rentals with pushcarts available.
- ❖ Club House with Food & Beverage options.
- ❖ New Twilight Rates available, after 2:30pm.
- ❖ Join us for stunning Sunsets.
- ❖ Great selection on golf attire and accessories.
- ❖ Beautiful Wedding and Group Venue.

Resort Activities – Festive

HAPPY HOLIDAYS



Resort Activities – Festive



Resort Activities – Guest Feedback

South Seas · January 22, 2026 at 9:39 AM

10 “Every one from gate to front desk, pools beach , restaurant and water park was very nice and professional”

South Seas · January 16, 2026 at 8:40 AM

10 “Everyone from food, beach. Golf cart. Rental, we’re wonderful, and friendly. Love the new everything so far. As always the Marina was awesome. Hope too be back soon John at BeachHouse, went out of his way when we mentioned we’d like a golf cart at the end of day, called for us and gave us a ride. All Marina staff, very helpful, polite always a pleasure. Charles and his help are all helpful and great. We have been coming here 14 years and are excited for the next phase. It was so sad after 2 big Hurricanes”

South Seas · January 13, 2026 at 3:55 PM

10 “Great resort, love the off season.”

South Seas · January 11, 2026 at 12:12 AM

10 “Great experience. Ongoing construction had no impact on our experience. We look forward to returning and seeing the finished product!”



Food & Beverage Update

Scott McGregor

Director of Food & Beverage

Food & Beverage Update – Dining

Food & Beverage Recent News

Welcome to the team Kimberly Von Duhn
Kimberly is our new Assistant Manager at Redfish Grill and will also be assisting us with leading our events team. Kimberly has just moved to the area from Cincinnati, OH

Welcome to the team Prajay Meshram
Prajay is our new Assistant Restaurant Manager at the Beach House. Prajay is coming to us from the Horseshoe Bay Resort in Austin, TX. Prajay did a wonderful job there serving our resort guests and loyal members in our private clubhouses.

The Clutch Clubhouse - Last Tee Time is 3:30PM
Hours: 8:00 AM – Sunset – CLOSED MONDAY



Food & Beverage Update – Dining

Tarpon Bar | Bayview Pools

Hours: 10AM – Sunset



Scoops & Slices | Bayview Pools

NEW HOURS: 1PM – 9PM

New Flavors arriving weekly!



Food & Beverage Update – Dining

Starbucks | The Shops at South Seas

Hours: 6:30AM – 6:00PM



Provisions | The Shops at South Seas

Hours: 8AM – 6PM



Food & Beverage Update – Dining

Redfish Grill

Hours: 11:00AM – 6:00PM



Food & Beverage Update – Dining

Harborside Grill

New Menu Launch 1/23/26

New menu launched Friday last week. New items such as the Trio Bruschetta, Chicken ala Vodka Gnocchi all becoming new favorites. Congratulations to Alex McDougal for his promotion to General Manager of Harborside Grill



Food & Beverage Update – Beach House

Open Daily 11:00am to 9:00pm

Cuisine – All the best the Gulf & SW Florida has to offer.

Patio weather is here! Come on out and enjoy a beverage and a great dish and take in the Sunsets!





Sales & Marketing

Wendy Nicodemus

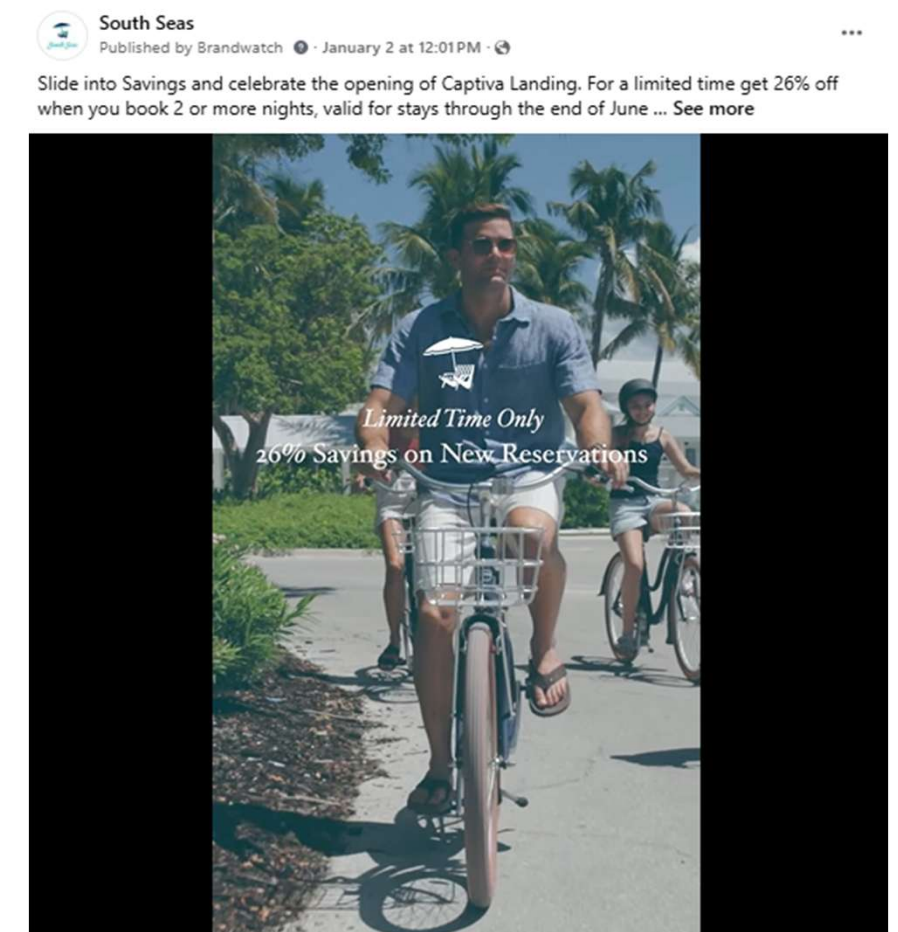
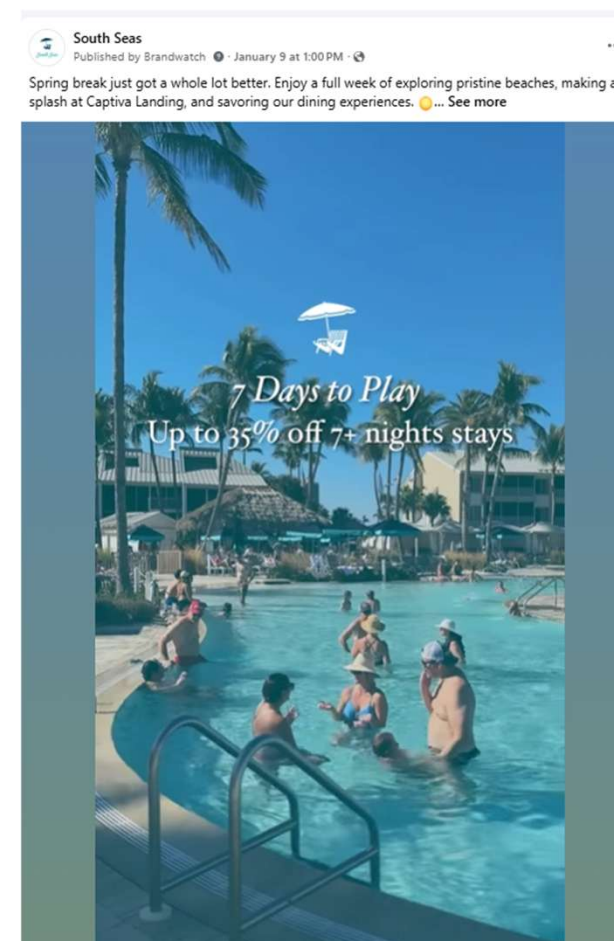
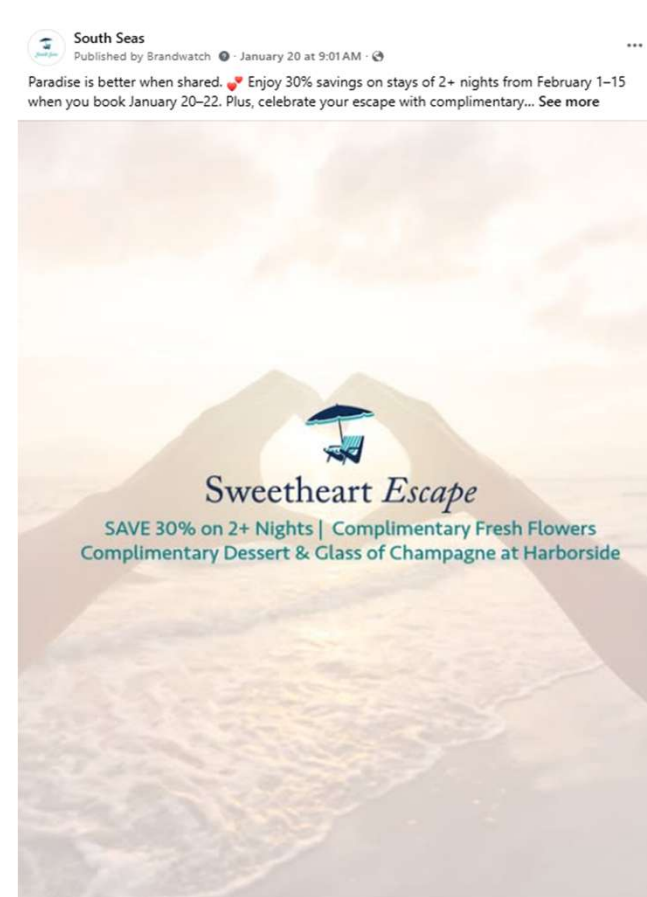
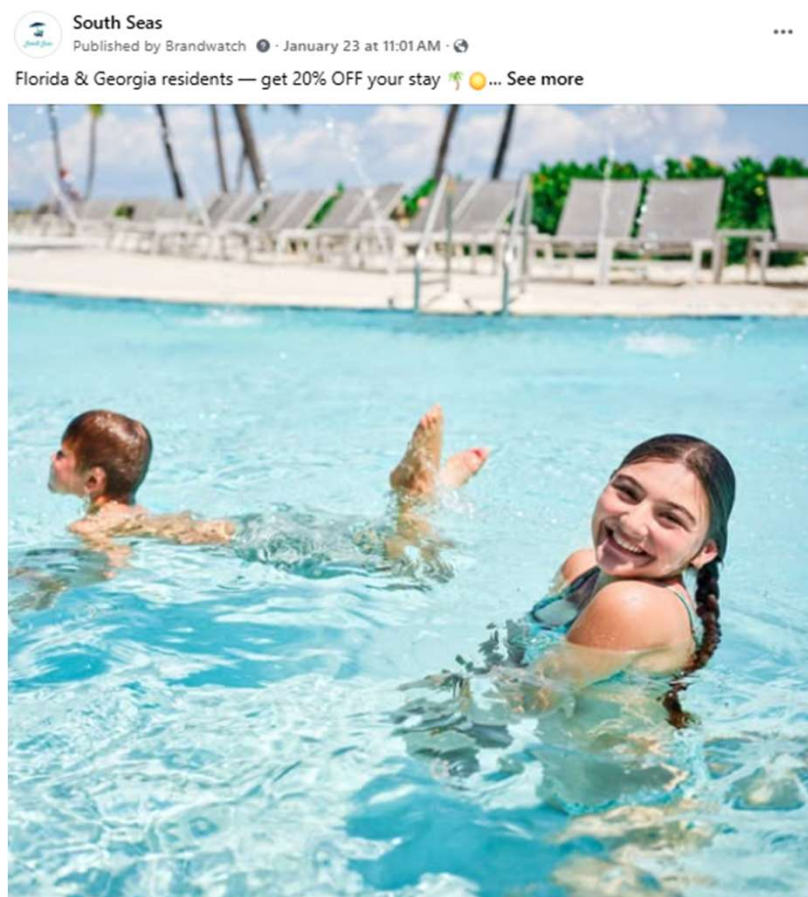
Sales & Marketing Update – Key Updates

- ❖ Paid Media
- ❖ Digital Marketing
- ❖ Organic Social Media
- ❖ Public Relations
- ❖ Key Initiatives
- ❖ Performance

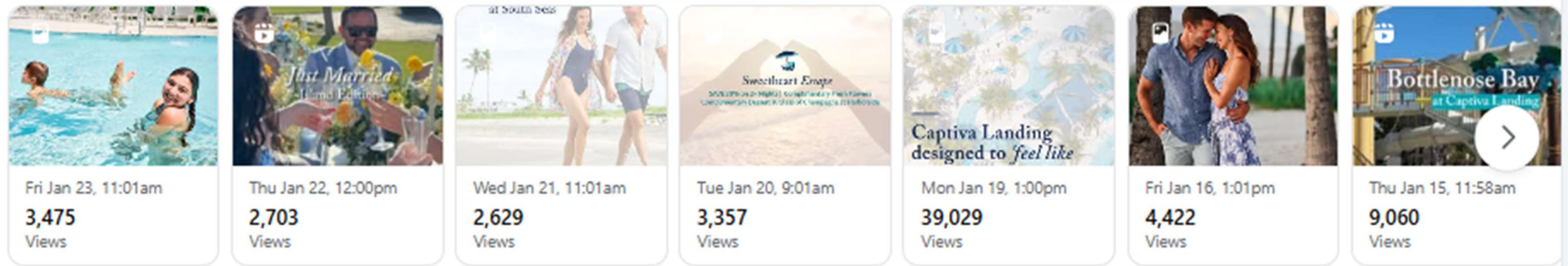
Sales & Marketing – Paid Media

- ❖ Average pick up between \$800-\$1M per week – last 4 weeks, marking a new trend
- ❖ Rare ROAS of 71.1 on paid media

- ❖ Current Booking MTD for January \$2,073,661 and 628 Room Nights
- ❖ Florida, Chicago, Boston, NY, Minnesota, Ohio, New Jersey top domestic cities booking
- ❖ Argentina and UK top performing International markets

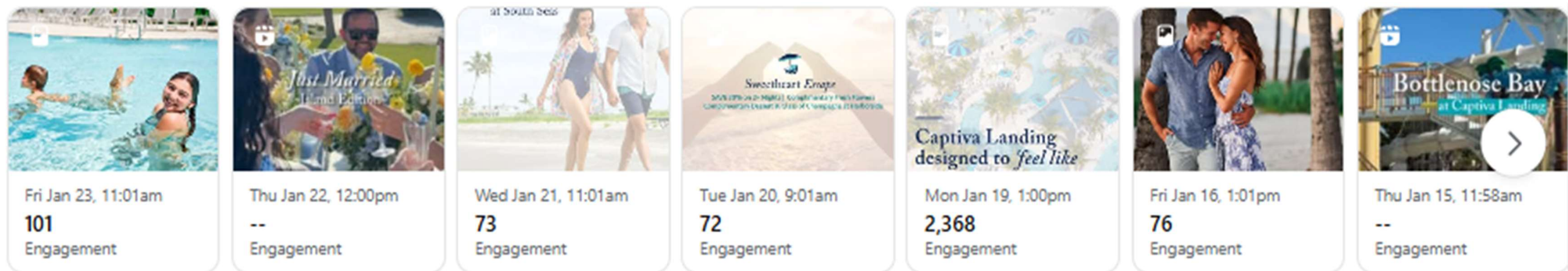


Sales & Marketing – 28 Day Organic Social Media Performance



Social Media views consist of 67.9% non-followers and 32.1% following

Engagement – 86.6% react to the posts and 8.8% comment while 4.6% share with others



Slide 26

wn1

Paid Social Media performance that we do through Travel Click
Great views and interactions regarding the Cabbage Key Wave Runner tour
wnicodemus@southseas.com, 2025-10-16T16:07:28.375

Publication Reach

NY reach 568.4M, Southern Living 411.28M, Wide Open Space 253.1K



—
Captiva Landing
designed to *'feel like
summer all year long'*.
Southern Living Magazine

There's a new kind of waterpark splashing onto the scene.

Florida has cemented itself as the premier winter vacation destination for frost-bitten Americans with the opening of Captiva Landing.

The new waterpark at South Seas resort on the Sunshine State's Gulf Coast **debuted on Dec. 22 last year**, offering a warm weather experience no matter the season.

Spanning just over 2.5 acres of the resort's 330 acres of land, the "winter-proof" waterpark features heated freshwater pools, water slides, sun-filled play spaces, wind-protected lounging areas, as well as dining options.

"When we say 'winter-proof,' we mean families can truly leave winter behind the moment they arrive," Shawn Farrell, general manager of South Seas, said, **per Southern Living**.

"Captiva Landing was designed so that even in the heart of winter, guests can enjoy warm water, sunshine, and outdoor fun without compromise."

The waterpark sits within the resort's landscape rather than an enclosed space, and it was designed to feel inspired by an island rather than a theme park or something artificial.

"Natural materials, island-inspired architecture, open sightlines, and a laidback pace all contribute to an experience that feels organic and unforced," Farrell explained.

This is a notable distinction for travelers coming from cold weather, considering there are only a handful of outdoor waterparks that operate on a year-round schedule — and they're all primarily in Florida thanks to its balmy year-round climate.

Aside from the new Captiva Landing, Walt Disney World's **Typhoon Lagoon** is typically open year-round, with heated water in the winter, though it does occasionally shut down for maintenance and for short periods due to cold weather or storms.



Sales & Marketing – Key Initiatives

- ❖ Make a Splash Influencer event – Captiva Landing on 1/24
- ❖ Influencers are being secured for the first half of 2026
- ❖ Hired new Leisure Sales and Content Manager to enhance our selling and marketing efforts
- ❖ Planning for Tarpon Tournament 5/22 and adding a Golf Tournament to the festivities this year
- ❖ Sweepstakes 5 giveaways on the Kid Kraddick radio show to air in January 2026
- ❖ South Seas Photo shoot will be taking place on property the week of 2/8
- ❖ FOX National News will do a live broadcast on property the week of 3/1

Sales & Marketing – 2026 Performance

- ❖ On the books we have 1,409 Group Room Nights and continue to focus on Boater groups as well
- ❖ Important to remember occupancies are growing and we ask that if you need to cancel, please do so timely so we can be sure to rent your villa.
- ❖ We are currently at 60% occupancy for February, 65% for March, and 51% for April and continue to grow week over week adding an average of 350 to 400 room nights per week.
- ❖ Slide into Savings for 2026 has been our top performing offer, Advance Purchase and our Best Available rate with no discount continue to do well throughout the 2026 year.
- ❖ Dates that are higher occupancy do not offer discounts, and we are selling at premium rates.
- ❖ Please keep in mind we have great spaces for events and meetings. Our new Overlook at Bayview pools has incredible views as well as our premium meeting rooms located in the registration area. We can also accommodate you in our Redfish and Harborside Restaurants for events.



Owner Relations Update

Julisa Jimenez

Owner Relations Update

❖ OSE Package

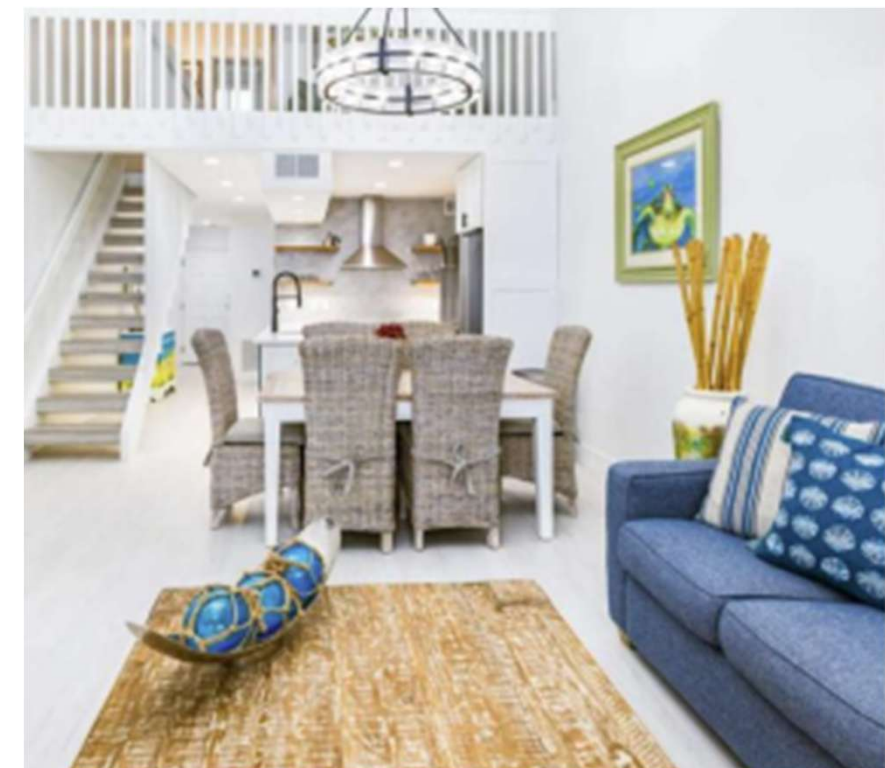
- As part of our ongoing commitment to enhanced standards, the upgraded OS&E must be purchased and ordered by March. Standard OS&E will no longer be replenished or provided. Owners may supply their own kitchenware or upgrade to the new OS&E package to ensure consistency and quality.

❖ HOA Projects

- Continuously seeing challenges with elevators not working.
- Gulf Beach Villa: Parking lot project on going.
- Bayside Villa: Parking lot project completed.

❖ Shipping & Receiving Guidelines

- **Owners in Program** - All mailings or packages must be addressed:
South Seas Resort
C/O: Owner Relations, Property Manager – Unit No.
5400, Plantation Road
Captiva Island, FL 33924
- Owners who are not enrolled in the program are kindly asked to arrange their own mailings.



Owner Relations Update

Owner Relations has welcomed two new **Property Managers**

Rachel Stokes

d: 239.472.7554 | m: 239.560.0894

email: rstokes@southseas.com

- **Beach Cottages**
- **Marina Villas**
- **Lands End**



Anthony Bernabei

d: 239.472.7580 | m: 330.691.0567

email: abernabei@southseas.com

- **Captiva Resort Villas**
- **Bayside Villas**



Exclusive Rental Agreement & Club Captiva

❖ Exclusive Rental Agreement

- We are currently conducting meetings with owners who have not yet signed. Please feel free to reach out, we'd be glad to set up a meeting and answer any questions you may have.

❖ Club Captiva

- Just a friendly reminder that all Club Captiva agreements were originally due by December 31, 2025, and we've extended the deadline to **February 10**.
- To help ensure there's no interruption to your amenities privileges, please make sure all required membership documents are fully completed and returned prior to the deadline.

- ❖ **Club Captiva Members** - we hope you're enjoying all the amenities and everything South Seas has to offer! We're thrilled to have you and look forward to continuing to enhance your experience and make it even more memorable.

❖ Club Captiva Applications - Now Open for Timeshare Owners

- Scan the QR code or contact Owner Relations to apply.





South Seas Build-Back & Future Amenities

Greg Spencer

Captiva Landing

Designs and renderings are subject to change at the discretion of the developer. The information presented is for illustrative purposes only and does not constitute a commitment to deliver the final product as depicted. Actual designs and specifications may vary. All rights reserved by the developer.



Captiva Landing



Captiva Landing



Captiva Landing



Captiva Landing - Murals



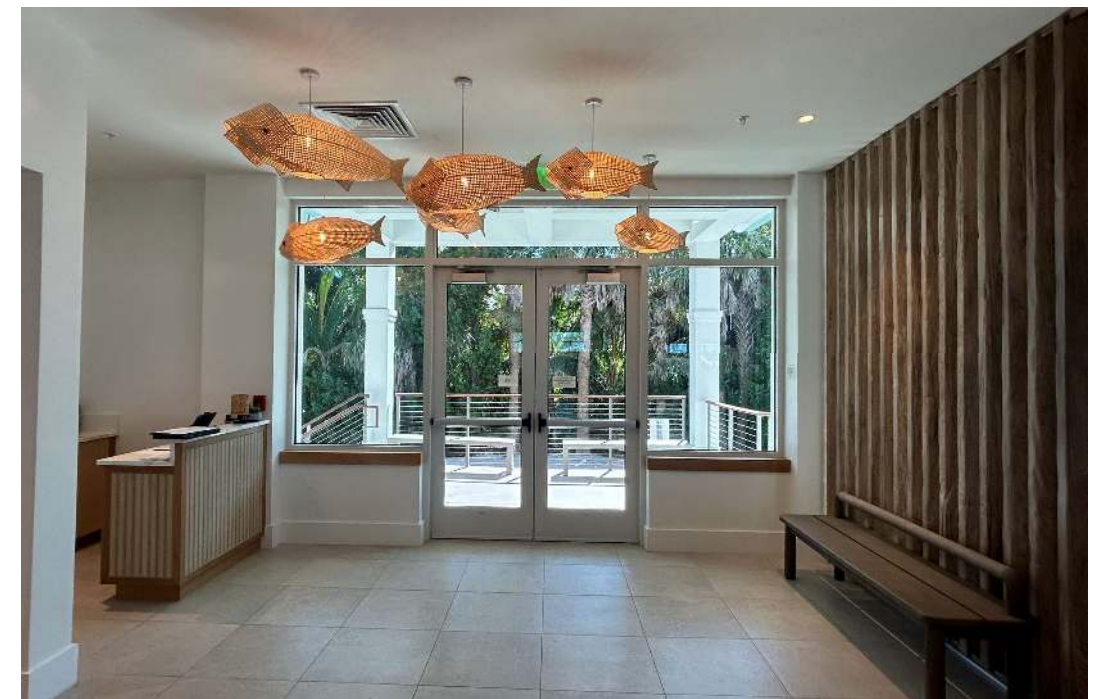
Captiva Landing – Camptiva (Kids Club)



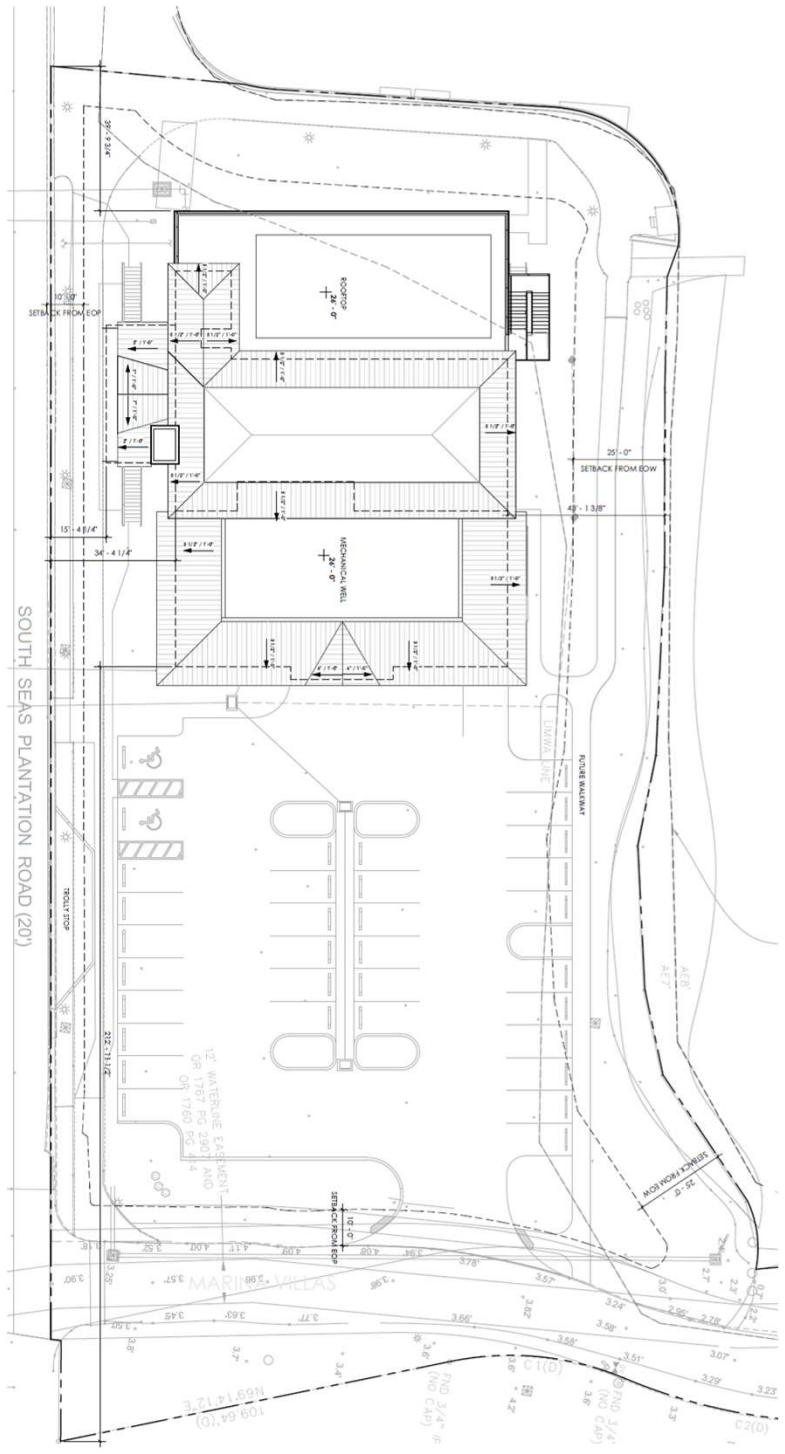
Captiva Landing



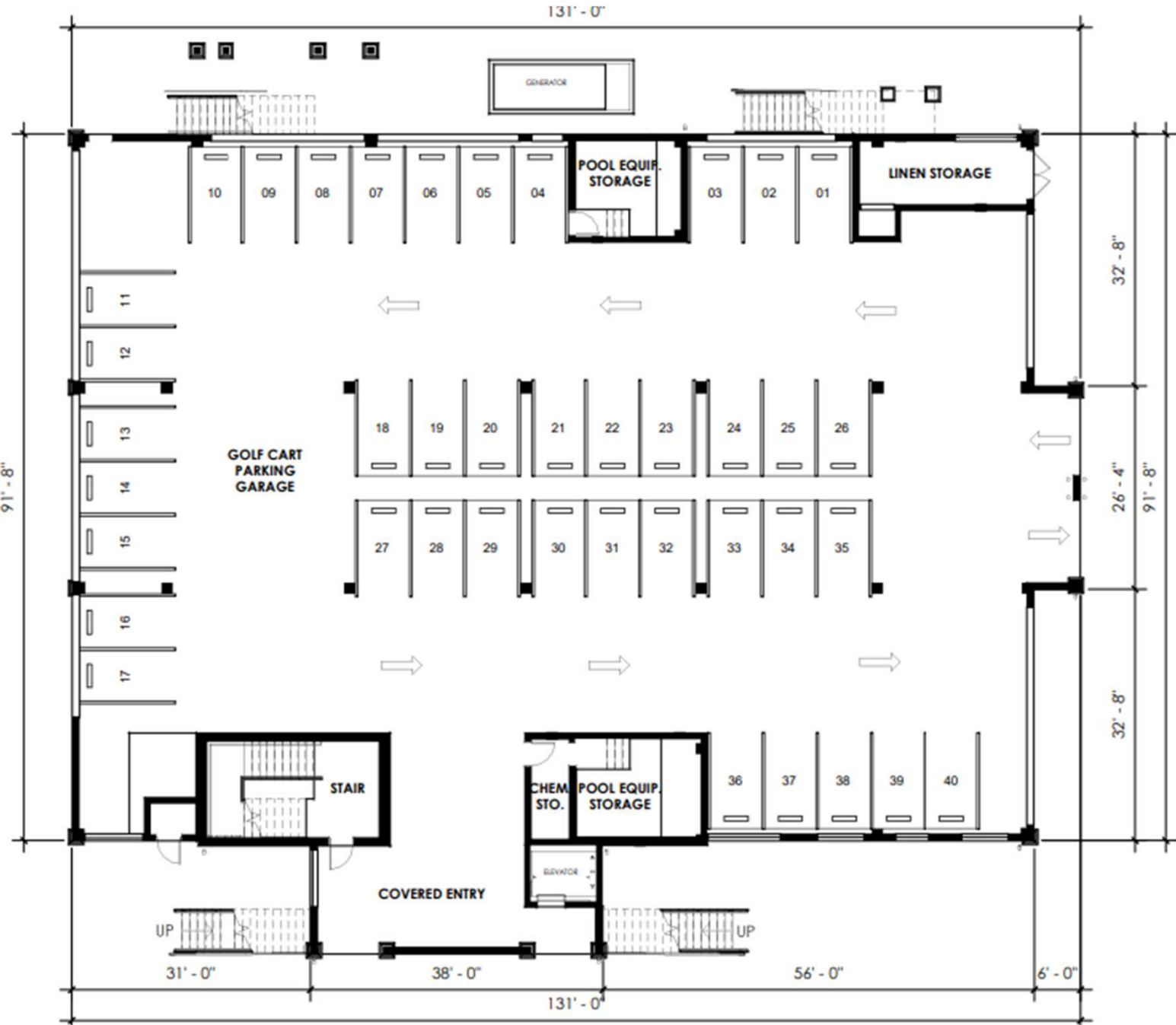
The Beach House – Now Open



The Spa at South Seas

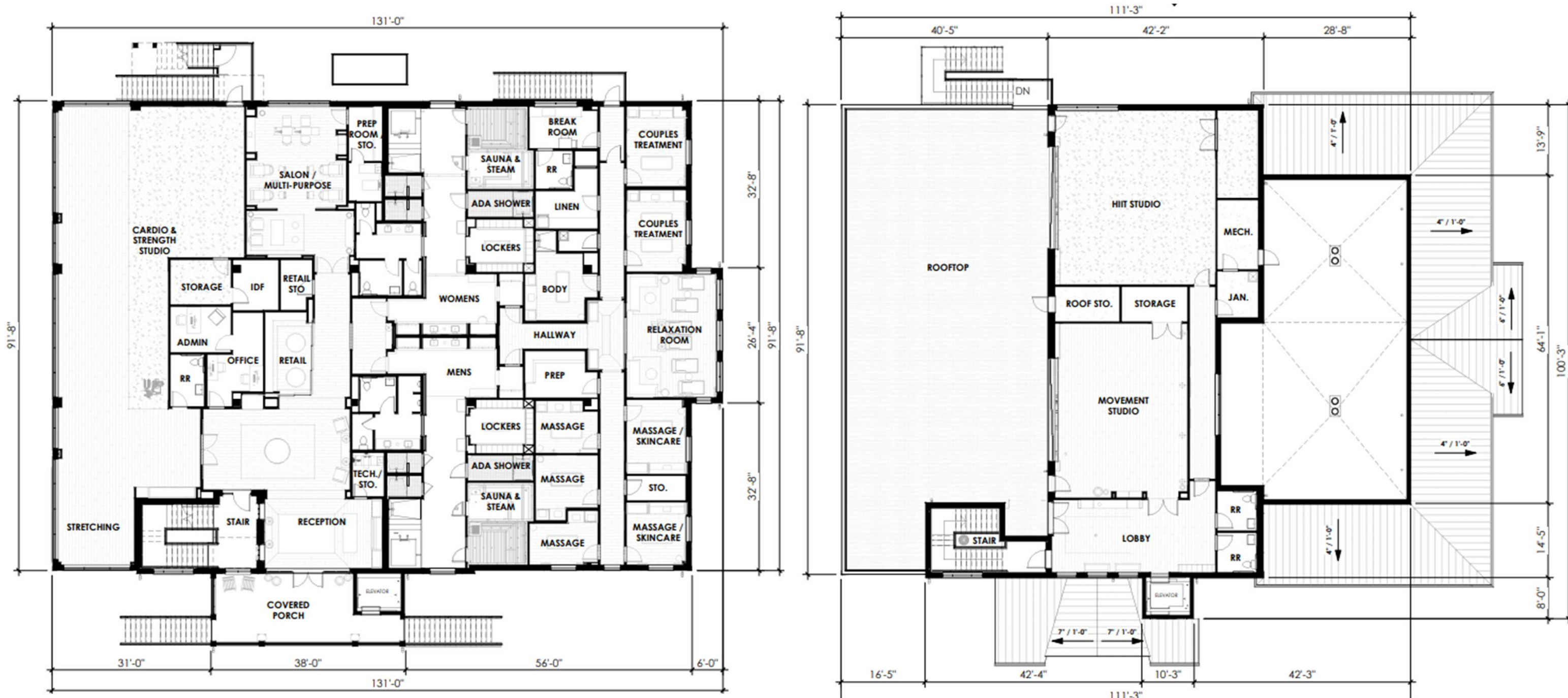


The Spa at South Seas



Disclaimer: These renderings are conceptual and provided for illustrative purposes only. They do not represent final design, construction, or site conditions. All plans, features, dimensions, finishes, and amenities are subject to change without notice and may vary based on design development, permitting, and other approvals.

The Spa at South Seas



Disclaimer: These renderings are conceptual and provided for illustrative purposes only. They do not represent final design, construction, or site conditions. All plans, features, dimensions, finishes, and amenities are subject to change without notice and may vary based on design development, permitting, and other approvals.

The Spa at South Seas



MHK
ARCHITECTURE



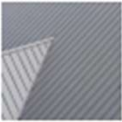
BLUEBIRD FEATHER
(SW 9062)



TABBY STUCCO



NUCEDAR SHINGLES



SENTRIGARD
STANDING SEAM
ROOF



SMOOTH STUCCO &
TRIM



SOUTH SEAS SPA

Disclaimer: These renderings are conceptual and provided for illustrative purposes only. They do not represent final design, construction, or site conditions. All plans, features, dimensions, finishes, and amenities are subject to change without notice and may vary based on design development, permitting, and other approvals.

The Spa at South Seas



Disclaimer: These renderings are conceptual and provided for illustrative purposes only. They do not represent final design, construction, or site conditions. All plans, features, dimensions, finishes, and amenities are subject to change without notice and may vary based on design development, permitting, and other approvals.

North End Site Work – Preparation for Hotel & Residences

"FINAL INSPECTION REQUIRED"
At the completion of the improvements, please submit a Letter of Substantial Compliance to schedule a Final Inspection.

SITE DEVELOPMENT PLANS FOR

SOUTH SEAS ISLAND RESORT

NORTH BEACH CAPTIVA SITE

(UTILITY RELOCATION AND FILL)

**VEGETATION PERMIT REQUIRED
PRIOR TO ANY SITE WORK**
Protective barricades must be constructed and inspected prior to permit issuance. Please Contact Division of Development Services (336) 533-8585

PROJECT DATA

SITE ADDRESS	PROJECT DATUM
1001 10th SOUTH BEACH PLANTATION RD. CAPTIVA, FL 33914	STUDY PLANS: FLORIDA 1001 ST ZONE 2002 1001 1001 1001 NORTH HARBORSIDE VERTICAL DATUM: BENCH MARK 1001
RECORD PLAN	STRAP NUMBERS
	20 0431-01-0000-0008

FLOOD ZONE

ACCORDING TO THE FLOOD INSURANCE RATE MAP NO. 1001-0000-0000, APPROXIMATE DATE: NOVEMBER 11, 2002, THE SUBJECT PARCEL IS LOCATED IN FLOOD ZONE "X" AS SHOWN ON THE MAP OF FLOOD ZONE.

PERMIT REQUIREMENTS


AGENCY	STATUS	NOTES
FLORIDA WATER MANAGEMENT DISTRICT	PENDING	
LEE COUNTY DEPARTMENT OF WATER	PENDING	06/20/2013
FLORIDA DEPT. OF ENVIRONMENTAL PROTECTION	PENDING	
ISLAND WATER ASSOCIATION	PENDING	
FLORIDA GOVERNMENTAL UTILITY AUTHORITY (FGUA)	PENDING	
FLA.P. NOTICE OF INTENT	PENDING	

NOTE: CONTRACTOR MUST OBTAIN AND KEEP ON FILE A COPY OF ALL PERMITS REQUIRED PRIOR TO COMMENCEMENT OF ANY CONSTRUCTION ACTIVITY

DESIGN TEAM

PROJECT ENGINEER	PROJECT MANAGEMENT
CARL A. BARRACO, P.E.	CHRIS VICKERS, P.E.
DESIGN ENGINEER	PROJECT SURVEYOR
TRACY B. GAUL, P.E.	JEFF COTHRAN, HESLEY WARD, INC.
LEAD DESIGN TECHNICIAN	SITE PLANNING
SCOTT A. WHEELER, JR.	
DESIGN STAFF	LAND PLANNING
QUALITY CONTROL	RECORD DRAWINGS

PART OF SECTION 22, TOWNSHIP 45 SOUTH, RANGE 21 EAST
CAPTIVA, LEE COUNTY, FLORIDA



INDEX OF DRAWINGS

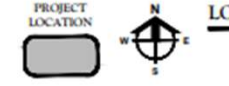
NO.	DESCRIPTION	DATE	ISSUED
1.0	GENERAL NOTES, LABELS, AND ABBREVIATIONS	06/20/13	06/20/13
2.0	AERIAL PHOTOGRAPHY AND EXISTING CONDITIONS DEMO PLAN	06/20/13	06/20/13
3.0	EXISTING UTILITY LOCATION AND DEPTH/COVER PLAN	06/20/13	06/20/13
4.0	EXISTING TOPOGRAPHY PLAN	06/20/13	06/20/13
5.0	WATER SITE LAYOUT, BOUNDARY AND PHASING PLAN	06/20/13	06/20/13
6.0	WATER UTILITY PLAN	06/20/13	06/20/13
7.0	WATER DRAINAGE PLAN	06/20/13	06/20/13
8.0	WATER SITE LAYOUT, BOUNDARY AND PHASING PLAN	06/20/13	06/20/13
9.0	WATER UTILITY PLAN	06/20/13	06/20/13
10.0	WATER DRAINAGE PLAN	06/20/13	06/20/13
11.0	WATER UTILITY PLAN	06/20/13	06/20/13
12.0	WATER DRAINAGE PLAN	06/20/13	06/20/13
13.0	WATER UTILITY PLAN	06/20/13	06/20/13
14.0	WATER DRAINAGE PLAN	06/20/13	06/20/13
15.0	WATER UTILITY PLAN	06/20/13	06/20/13
16.0	WATER DRAINAGE PLAN	06/20/13	06/20/13
17.0	WATER UTILITY PLAN	06/20/13	06/20/13
18.0	WATER DRAINAGE PLAN	06/20/13	06/20/13
19.0	WATER UTILITY PLAN	06/20/13	06/20/13
20.0	WATER DRAINAGE PLAN	06/20/13	06/20/13

CROSS-REFERENCED DRAWINGS

NO.	DESCRIPTION	DATE	ISSUED
1.0	GENERAL NOTES, LABELS, AND ABBREVIATIONS	06/20/13	06/20/13
2.0	AERIAL PHOTOGRAPHY AND EXISTING CONDITIONS DEMO PLAN	06/20/13	06/20/13
3.0	EXISTING UTILITY LOCATION AND DEPTH/COVER PLAN	06/20/13	06/20/13
4.0	EXISTING TOPOGRAPHY PLAN	06/20/13	06/20/13
5.0	WATER SITE LAYOUT, BOUNDARY AND PHASING PLAN	06/20/13	06/20/13
6.0	WATER UTILITY PLAN	06/20/13	06/20/13
7.0	WATER DRAINAGE PLAN	06/20/13	06/20/13
8.0	WATER SITE LAYOUT, BOUNDARY AND PHASING PLAN	06/20/13	06/20/13
9.0	WATER UTILITY PLAN	06/20/13	06/20/13
10.0	WATER DRAINAGE PLAN	06/20/13	06/20/13
11.0	WATER UTILITY PLAN	06/20/13	06/20/13
12.0	WATER DRAINAGE PLAN	06/20/13	06/20/13
13.0	WATER UTILITY PLAN	06/20/13	06/20/13
14.0	WATER DRAINAGE PLAN	06/20/13	06/20/13
15.0	WATER UTILITY PLAN	06/20/13	06/20/13
16.0	WATER DRAINAGE PLAN	06/20/13	06/20/13
17.0	WATER UTILITY PLAN	06/20/13	06/20/13
18.0	WATER DRAINAGE PLAN	06/20/13	06/20/13
19.0	WATER UTILITY PLAN	06/20/13	06/20/13
20.0	WATER DRAINAGE PLAN	06/20/13	06/20/13

Development Order Approval does not vest nor guarantee that changes will not be required, if subsequent changes are made to the Uniform Lee County Fire Code.

PROJECT LOCATION



LOCATION MAP

SCALE: 1" = 1000'

**APPROVAL SUBMITTAL PLANS
NOT FOR CONSTRUCTION**

24329 1.0

"FINAL INSPECTION REQUIRED"
At the completion of the improvements, please submit a Letter of Substantial Compliance to schedule a Final Inspection.

SITE DEVELOPMENT PLANS FOR

SOUTH SEAS ISLAND RESORT

HARBORSIDE HOTEL

**VEGETATION PERMIT REQUIRED
PRIOR TO ANY SITE WORK**
Protective barricades must be constructed and inspected prior to permit issuance. Please Contact Division of Development Services (336) 533-8585

PROJECT DATA

SITE ADDRESS	PROJECT DATUM
1001 10th SOUTH BEACH PLANTATION RD. CAPTIVA, FL 33914	STUDY PLANS: FLORIDA 1001 ST ZONE 2002 1001 1001 1001 NORTH HARBORSIDE VERTICAL DATUM: BENCH MARK 1001
RECORD PLAN	STRAP NUMBERS
	20 0431-01-0000-0008

FLOOD ZONE

ACCORDING TO THE FLOOD INSURANCE RATE MAP NO. 1001-0000-0000, APPROXIMATE DATE: NOVEMBER 11, 2002, THE SUBJECT PARCEL IS LOCATED IN FLOOD ZONE "X" AS SHOWN ON THE MAP OF FLOOD ZONE.

PERMIT REQUIREMENTS


AGENCY	STATUS	NOTES
FLORIDA WATER MANAGEMENT DISTRICT	PENDING	
LEE COUNTY DEPARTMENT OF WATER	PENDING	
FLORIDA DEPT. OF ENVIRONMENTAL PROTECTION	PENDING	
ISLAND WATER ASSOCIATION	PENDING	
FLORIDA GOVERNMENTAL UTILITY AUTHORITY (FGUA)	PENDING	
FLA.P. NOTICE OF INTENT	PENDING	

NOTE: CONTRACTOR MUST OBTAIN AND KEEP ON FILE A COPY OF ALL PERMITS REQUIRED PRIOR TO COMMENCEMENT OF ANY CONSTRUCTION ACTIVITY

DESIGN TEAM

PROJECT ENGINEER	PROJECT MANAGEMENT
CARL A. BARRACO, P.E.	CHRIS VICKERS, P.E.
DESIGN ENGINEER	PROJECT SURVEYOR
TRACY B. GAUL, P.E.	JEFF COTHRAN, HESLEY WARD, INC.
LEAD DESIGN TECHNICIAN	SITE PLANNING
SCOTT A. WHEELER, JR.	
DESIGN STAFF	LAND PLANNING
QUALITY CONTROL	RECORD DRAWINGS

PART OF SECTION 22 TOWNSHIP 45 SOUTH, RANGE 21 EAST
CAPTIVA, LEE COUNTY, FLORIDA



INDEX OF DRAWINGS


NO.	DESCRIPTION	DATE	ISSUED
1.0	GENERAL NOTES, LABELS, AND ABBREVIATIONS	06/20/13	06/20/13
2.0	AERIAL PHOTOGRAPHY AND EXISTING CONDITIONS DEMO PLAN	06/20/13	06/20/13
3.0	EXISTING UTILITY LOCATION AND DEPTH/COVER PLAN	06/20/13	06/20/13
4.0	EXISTING TOPOGRAPHY PLAN	06/20/13	06/20/13
5.0	WATER SITE LAYOUT, BOUNDARY AND PHASING PLAN	06/20/13	06/20/13
6.0	WATER UTILITY PLAN	06/20/13	06/20/13
7.0	WATER DRAINAGE PLAN	06/20/13	06/20/13
8.0	WATER SITE LAYOUT, BOUNDARY AND PHASING PLAN	06/20/13	06/20/13
9.0	WATER UTILITY PLAN	06/20/13	06/20/13
10.0	WATER DRAINAGE PLAN	06/20/13	06/20/13
11.0	WATER UTILITY PLAN	06/20/13	06/20/13
12.0	WATER DRAINAGE PLAN	06/20/13	06/20/13
13.0	WATER UTILITY PLAN	06/20/13	06/20/13
14.0	WATER DRAINAGE PLAN	06/20/13	06/20/13
15.0	WATER UTILITY PLAN	06/20/13	06/20/13
16.0	WATER DRAINAGE PLAN	06/20/13	06/20/13
17.0	WATER UTILITY PLAN	06/20/13	06/20/13
18.0	WATER DRAINAGE PLAN	06/20/13	06/20/13
19.0	WATER UTILITY PLAN	06/20/13	06/20/13
20.0	WATER DRAINAGE PLAN	06/20/13	06/20/13

CROSS-REFERENCED DRAWINGS

NO.	DESCRIPTION	DATE	ISSUED
1.0	GENERAL NOTES, LABELS, AND ABBREVIATIONS	06/20/13	06/20/13
2.0	AERIAL PHOTOGRAPHY AND EXISTING CONDITIONS DEMO PLAN	06/20/13	06/20/13
3.0	EXISTING UTILITY LOCATION AND DEPTH/COVER PLAN	06/20/13	06/20/13
4.0	EXISTING TOPOGRAPHY PLAN	06/20/13	06/20/13
5.0	WATER SITE LAYOUT, BOUNDARY AND PHASING PLAN	06/20/13	06/20/13
6.0	WATER UTILITY PLAN	06/20/13	06/20/13
7.0	WATER DRAINAGE PLAN	06/20/13	06/20/13
8.0	WATER SITE LAYOUT, BOUNDARY AND PHASING PLAN	06/20/13	06/20/13
9.0	WATER UTILITY PLAN	06/20/13	06/20/13
10.0	WATER DRAINAGE PLAN	06/20/13	06/20/13
11.0	WATER UTILITY PLAN	06/20/13	06/20/13
12.0	WATER DRAINAGE PLAN	06/20/13	06/20/13
13.0	WATER UTILITY PLAN	06/20/13	06/20/13
14.0	WATER DRAINAGE PLAN	06/20/13	06/20/13
15.0	WATER UTILITY PLAN	06/20/13	06/20/13
16.0	WATER DRAINAGE PLAN	06/20/13	06/20/13
17.0	WATER UTILITY PLAN	06/20/13	06/20/13
18.0	WATER DRAINAGE PLAN	06/20/13	06/20/13
19.0	WATER UTILITY PLAN	06/20/13	06/20/13
20.0	WATER DRAINAGE PLAN	06/20/13	06/20/13

Development Order Approval does not vest nor guarantee that changes will not be required, if subsequent changes are made to the Uniform Lee County Fire Code.

PROJECT LOCATION

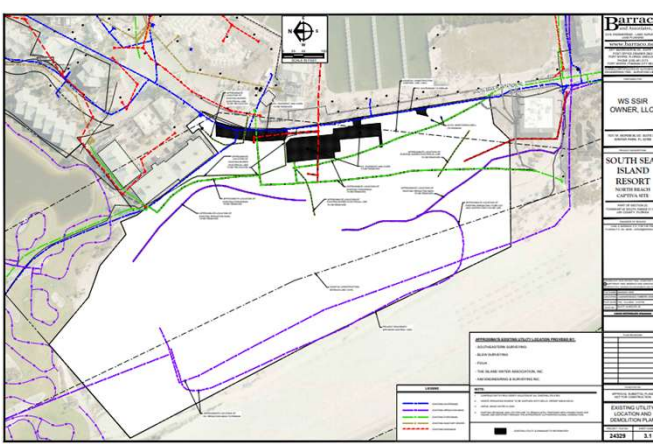


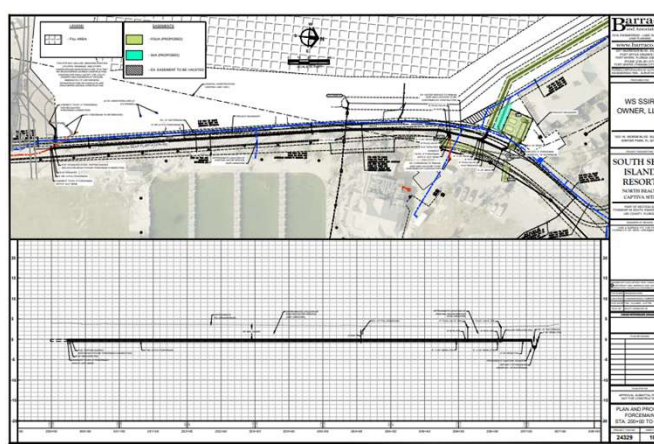
LOCATION MAP

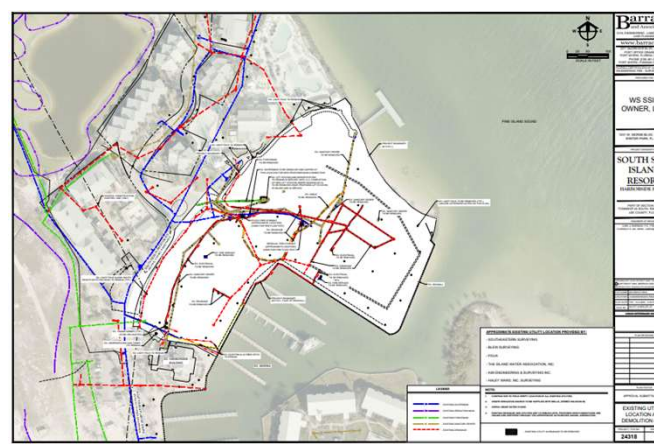
SCALE: 1" = 1000'

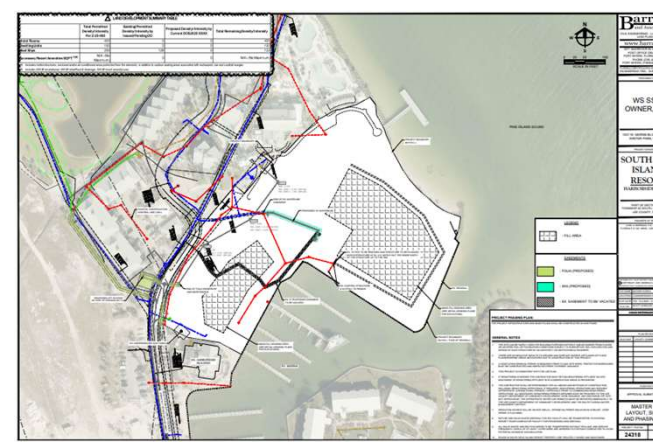
**APPROVAL SUBMITTAL PLANS
NOT FOR CONSTRUCTION**

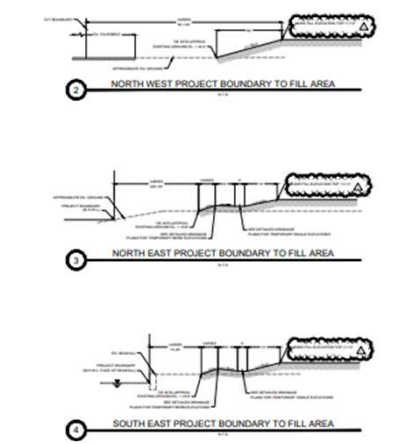
24318 1.0











North Hotel Rebuild – Design Progress



North Hotel Rebuild – Design Progress



Marina Floating Dock Transition (Hurricane Damage)



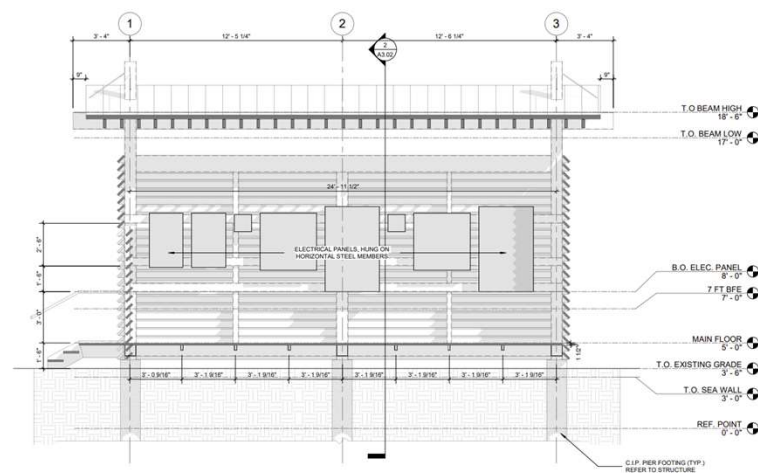
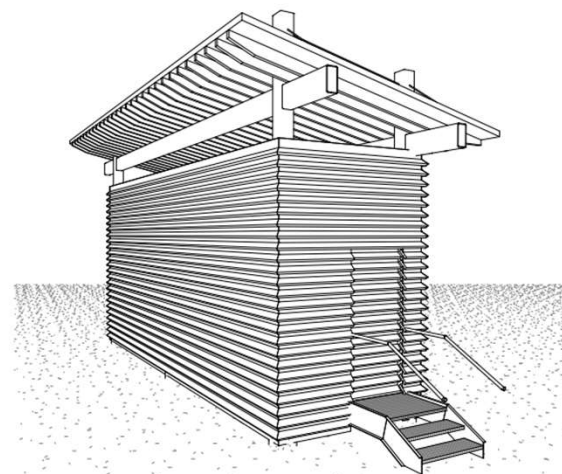
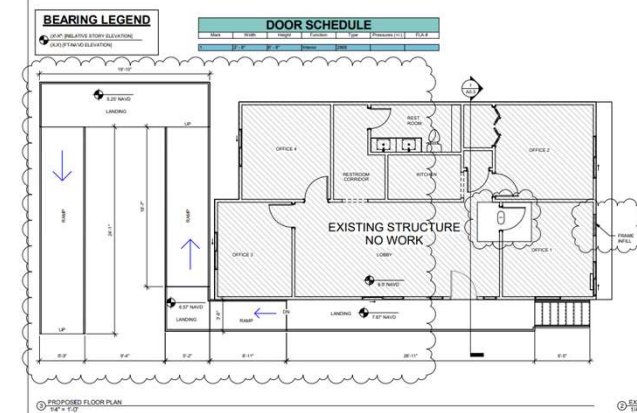
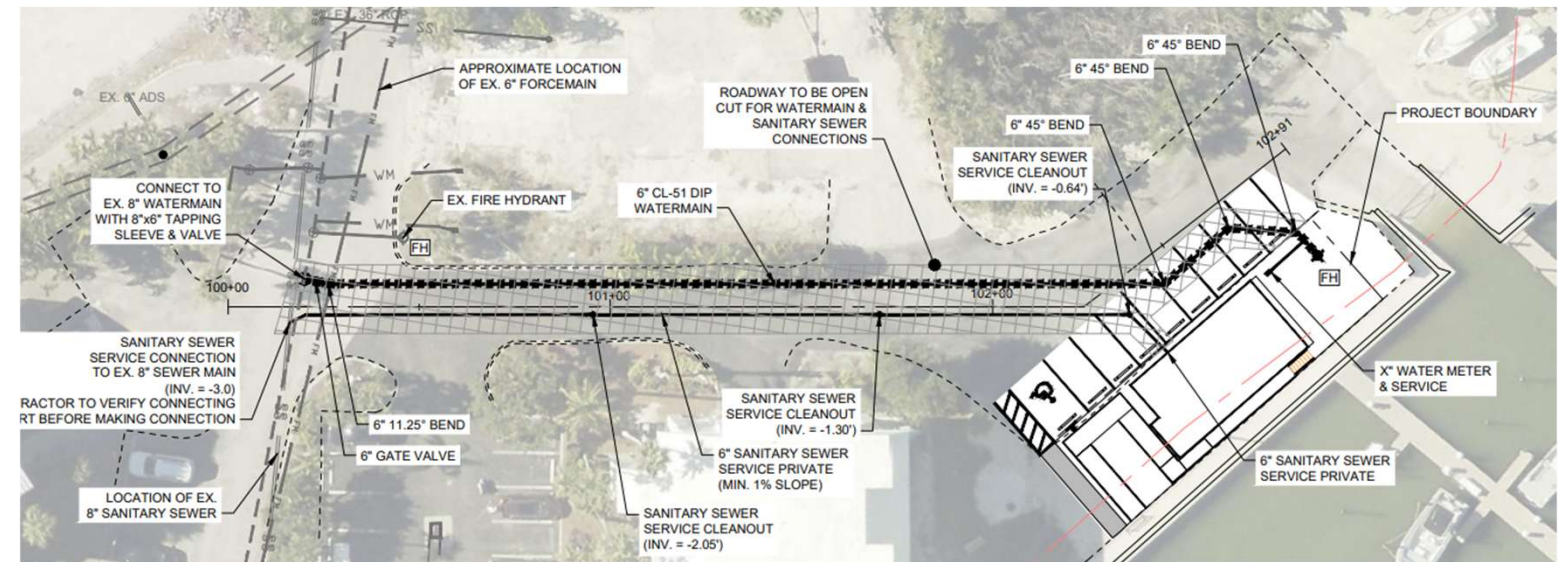
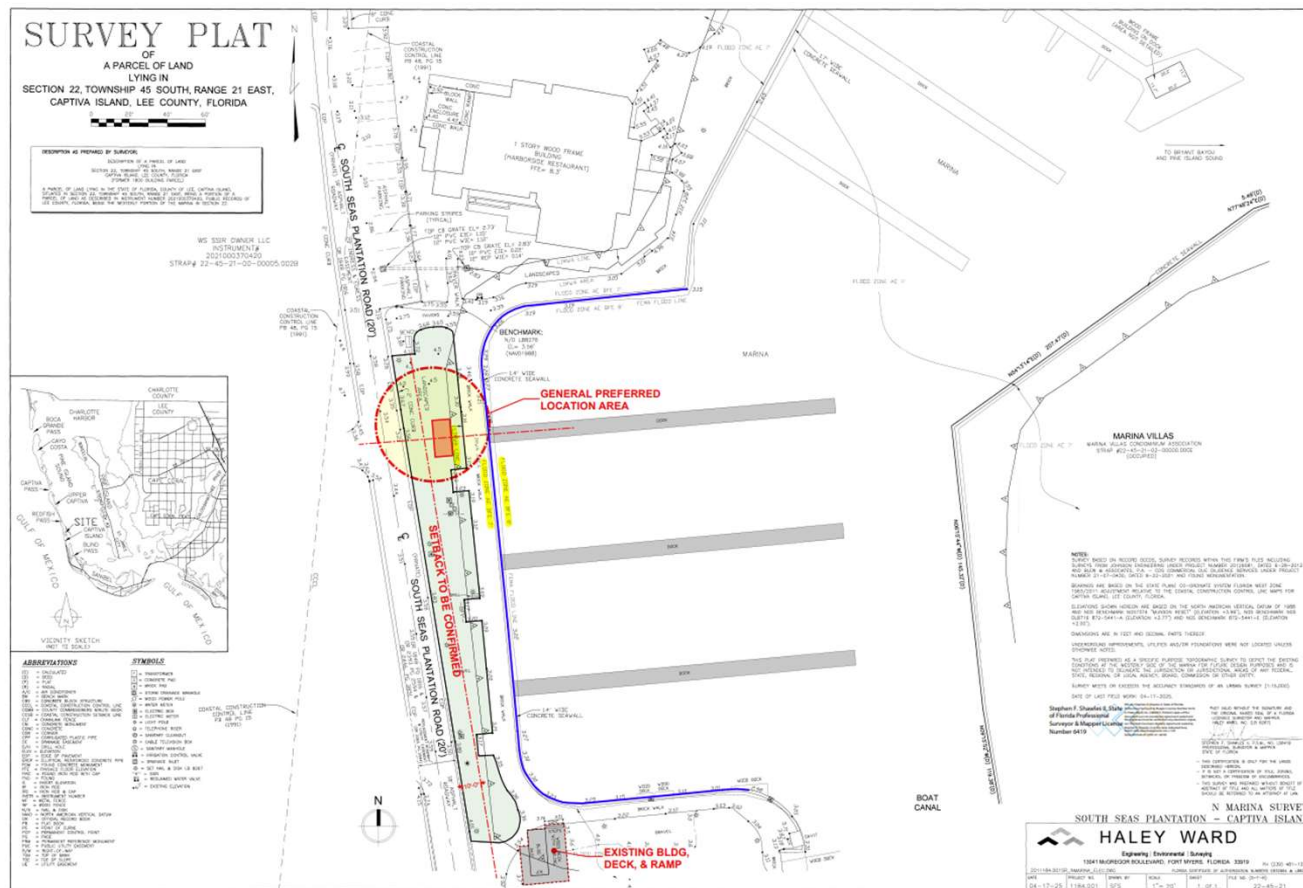
Marina Floating Dock Transition (Hurricane Damage)



Marina Floating Dock Transition (Hurricane Damage)






Miscellaneous Tactical Projects – Contractor Mobilized

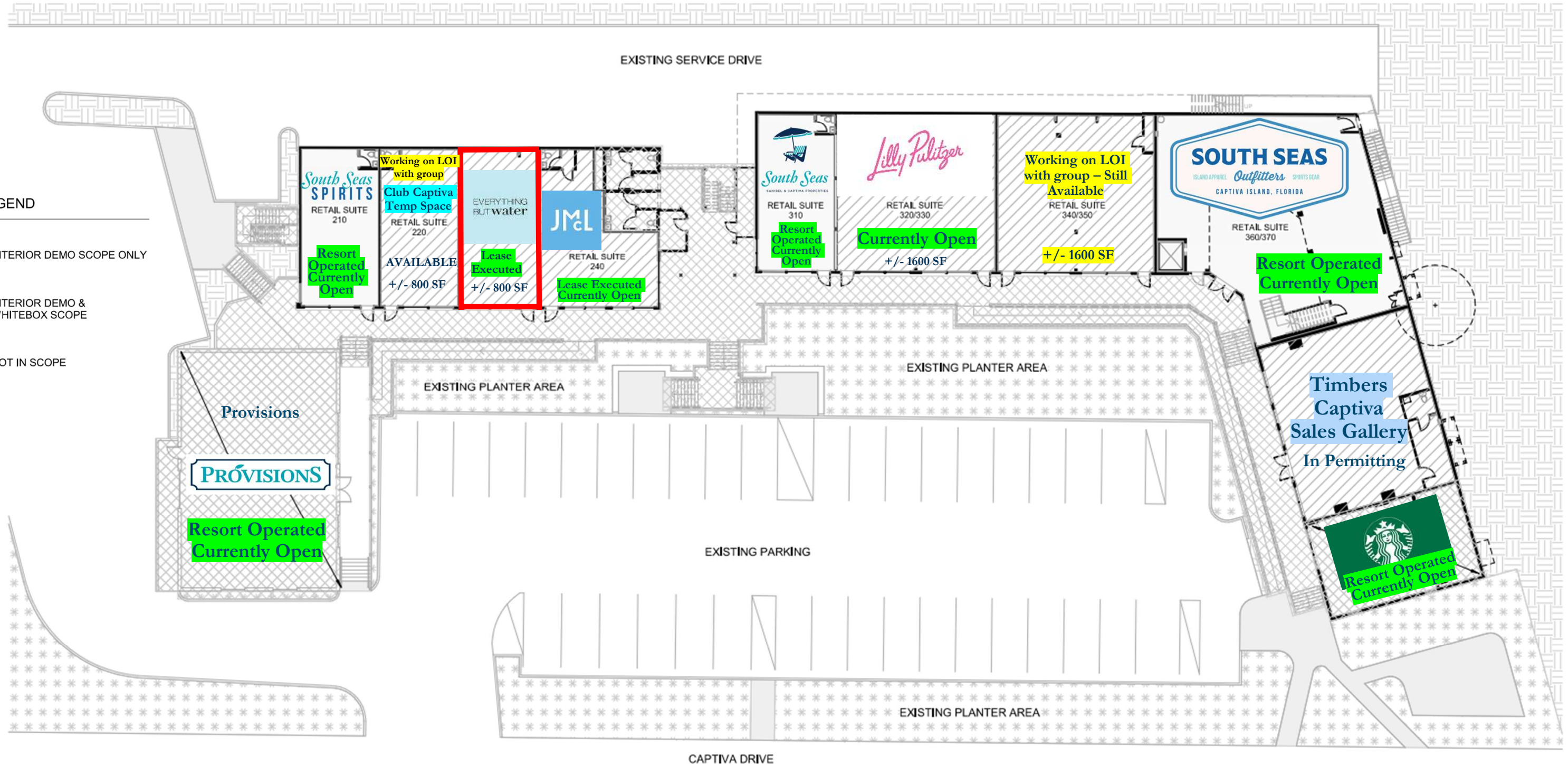


Shops at South Seas



PLAN LEGEND

-  INTERIOR DEMO SCOPE ONLY
-  INTERIOR DEMO & WHITEBOX SCOPE
-  NOT IN SCOPE



Shops at South Seas – Lilly Pulitzer Now Open!



NEW Store now open

- The Shops at South Seas

Lilly Pulitzer South Seas
 14830 Captiva Dr.
 Suite 320/330
 Captiva, FL 33924

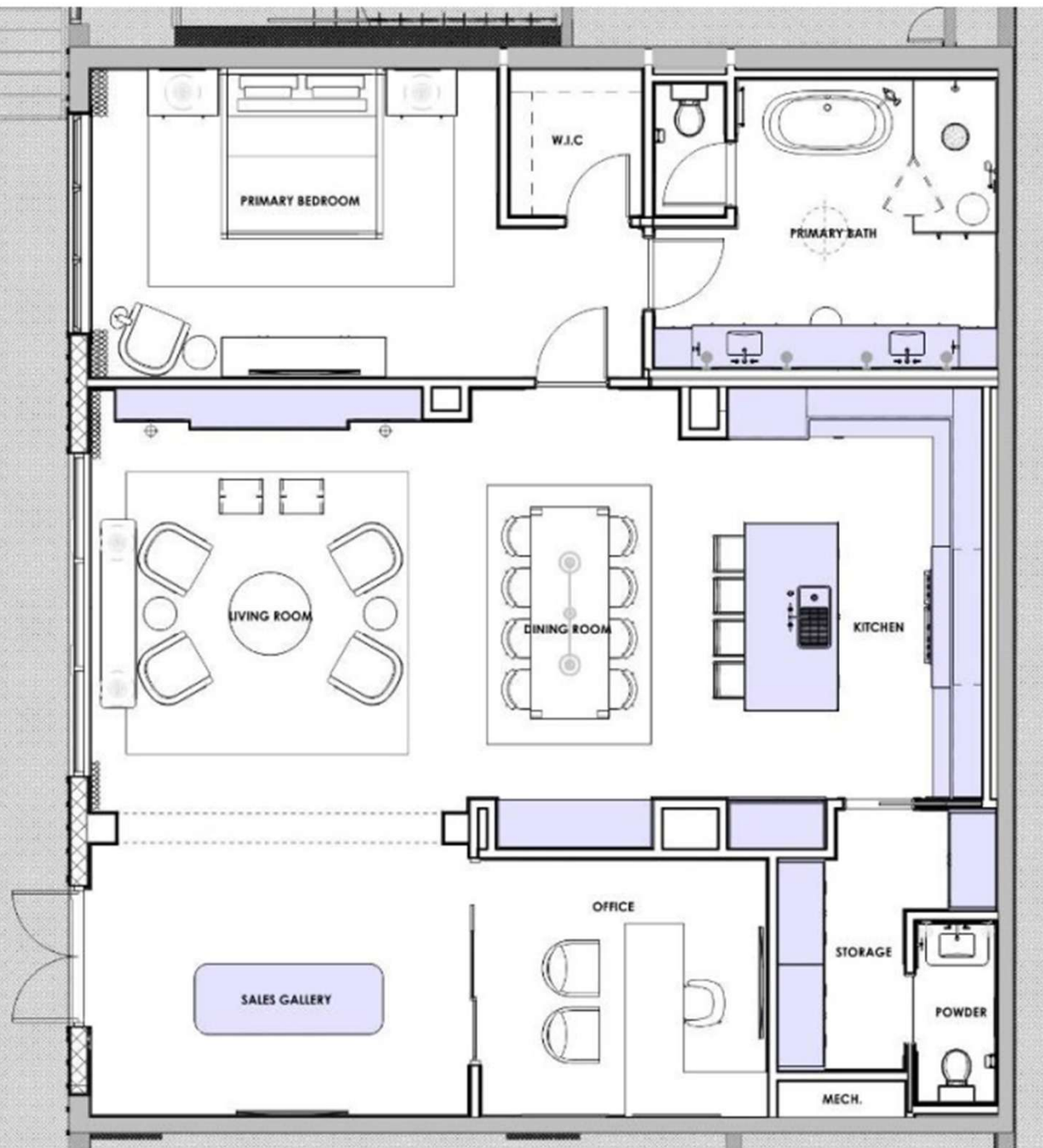
Call: (239) 579-1010
 Text: (850) 846-1743
 Email: southseas@lilypulitzer.com



Captiva, 1982
 Be transported to a tropical paradise by this beautiful, beachy print. Look closely—you'll find hidden treasures within its overlapping pattern of oversized scallop shells.
 Lilly founded her business with an iconic style—the classic shirt—purchasing printed fabrics exclusively from Key West Hand Print Fabric, Inc. between 1962 & 1985. First imagined in Palm Beach in 1959, Lilly Pulitzer redefined resortwear with unapologetically joyful prints, signature Palm Beach style, & timeless silhouettes.

Sunday	11:00am - 5:00pm
Monday	10:00am - 5:00pm
Tuesday	10:00am - 5:00pm
Wednesday	10:00am - 5:00pm
Thursday	10:00am - 5:00pm
Friday	10:00am - 5:00pm
Saturday	10:00am - 5:00pm

Shops at South Seas - Timbers Captiva Sales Gallery



Submitted for Permit – Construction to commence in next 1-2 months
There will be a formal launch of the project with renderings & project specifics

Resort Main Monument Sign



Tabby samples are under review.

Resort Main Monument Sign



*Night time illumination reference image



*Shell Concrete Reference Image



M1 Entry Monument Sign: 26' wide x 6'4" tall x 12" deep. Base structure is 26'x6' coated in shell concrete with exterior grade wood slats or Di-Noc covered ribbed aluminum sheet at 6'4" tall x 5'4" wide.. Logo is 3' 8" tall x 4' wide x 2" deep dimensional reverse pan-channel with 2700K warm white halo-illumination, pin-mounted with 1.5" deep spacers to wood-look slats. Letters are 2" deep x 20" (u) to 44" tall (S) reverse pan-channel with 2700K warm white halo-illumination, pin-mounted 1.5" off base. Scale: 1/2" = 1'

We Want to Hear From You

Collaboration and communication are key to making South Seas the best it can be.
We want to connect with you - your questions and feedback are always welcome.

Bob Walter

Owners Representative

727.460.2984

Bwalter@southseas.com