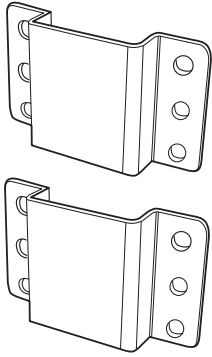
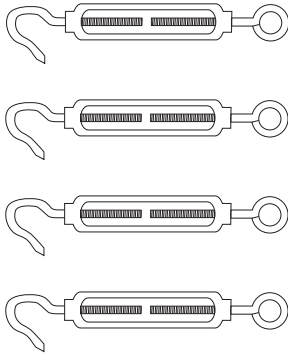


Parts Description

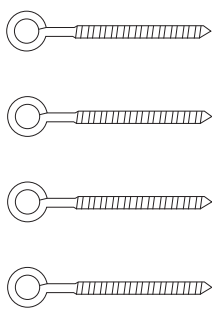
2 - Clamping Plates (A)



4 - Turnbuckles (B)



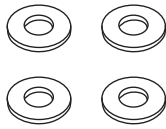
4 - Eye Bolts (C)



2 - Locking Nuts, 1/4" (D)



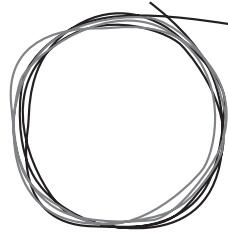
4 - SAE Washers, 1/4" (E)



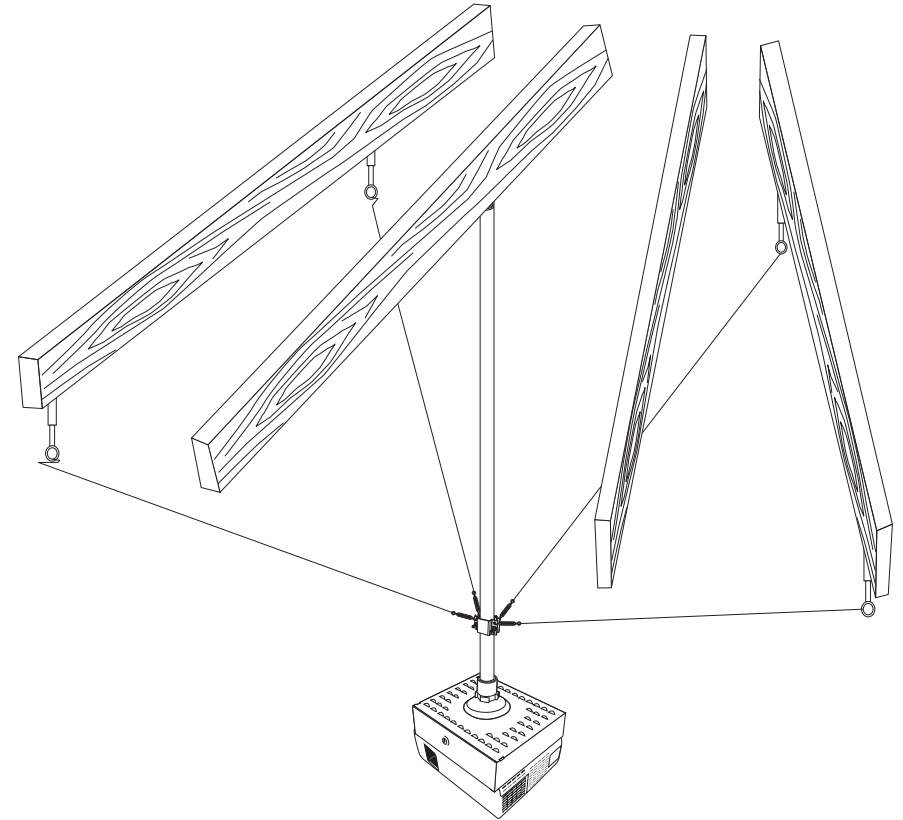
2 - 1 1/2" Hex Head Bolts, 1/4" (G)



40 ft Thin (F)
Hanger Wire

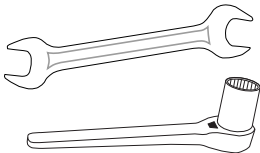


Stabilizer Installation Guide

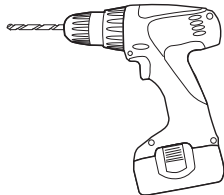


Tools Needed

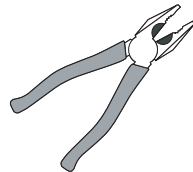
2 - 7/16" Wrenches



1 - Drill w/ 3/16" Bit



1 - Cutting Pliers



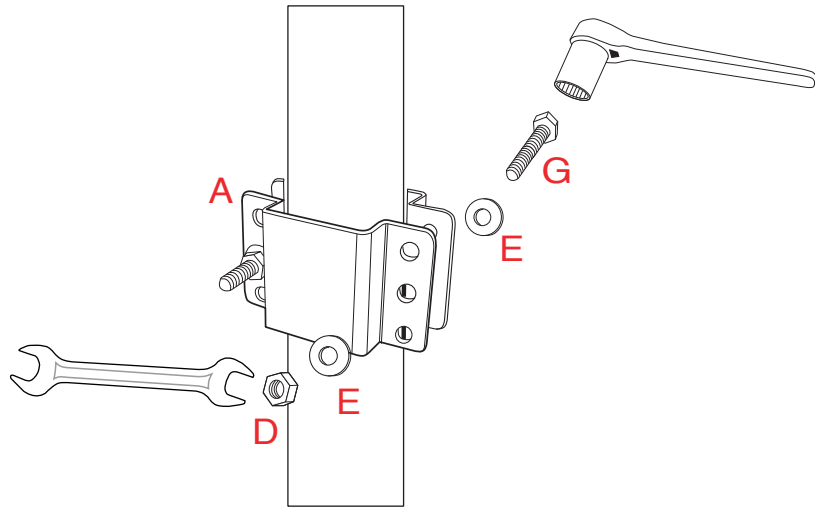
Business Machine Security

Customer Service - (800) 872-9562

Technical Support - customerservice@locdown.com

Website - www.LocDown.com

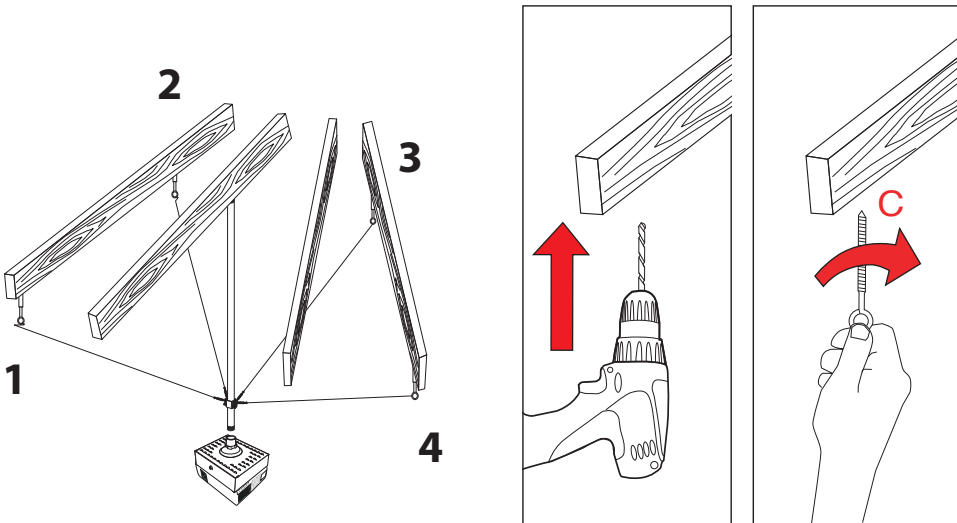
1 Attach Clamping Plates to the Pipe



1. Attach the Clamping Plates (A) onto the lower part of the pipe to allow for maximum stability. Insert the Hex Head Bolt (G) into the middle hole of the Clamping Plates (A) with a SAE Washer (E) in between.

2. Place a second SAE Washer (E) on the Hex Head Bolt (G) on the other side of the Clamping Plates (A) and screw on the Locking Nut (D) using the 2 wrenches until tight.

2 Install Wood Eye Bolts

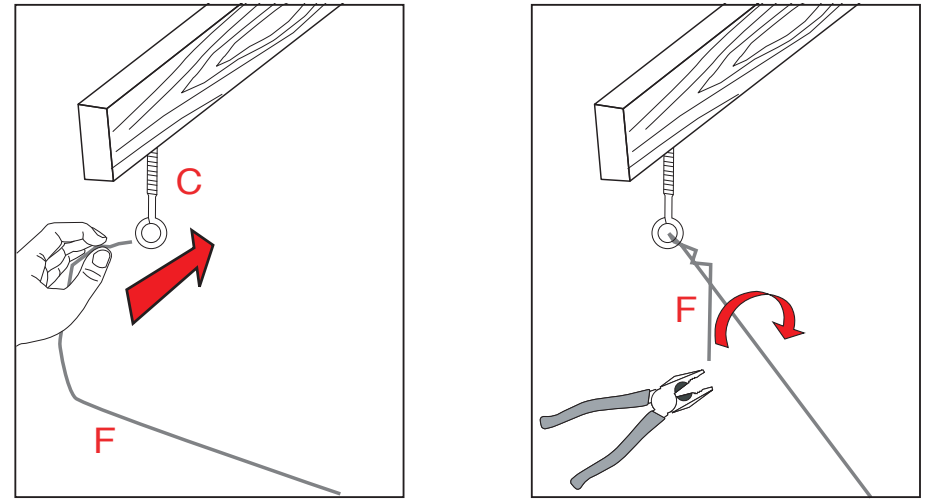


1. Space out the locations of the Eye Bolts (C) so that the pipe will be supported by four opposing corners.

2. Drill 3/16" pilot holes into the wood beams. Screw the Eye Bolts (C) into the beams.

3 Attaching the Hang Wire

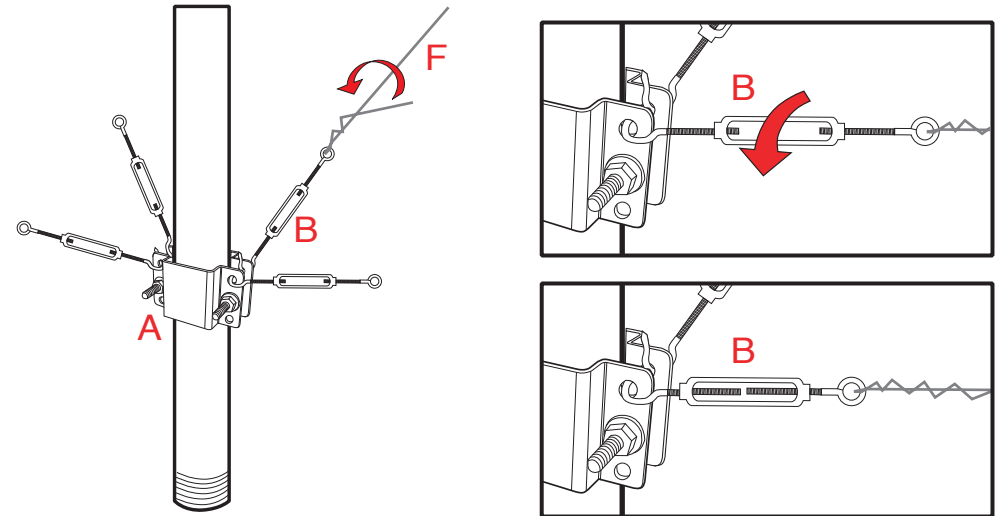
* Parts Description on Back Page



1. Cut the Hang Wire (F) into 4 equal lengths of 10 feet and insert one into each Eye Bolt (C). Pull 1 foot of the Hang Wire (F) through the Eye Bolt (C).

2. Wrap the 1 foot piece of the Hang Wire (F) around the other section tightly. Use pliers for the last few turns to ensure a tight fit.

4 Attach and Tighten the Turnbuckles



1. Attach the hooks of the Turnbuckles (B) to the top holes of the Clamping Plates (A). Run the 4 Hang Wires (F) through the eye holes and secure by repeating step 3.2.

2. Intermittently tighten the Turnbuckles (B) by rotating each center towards yourself until they are completely taut.