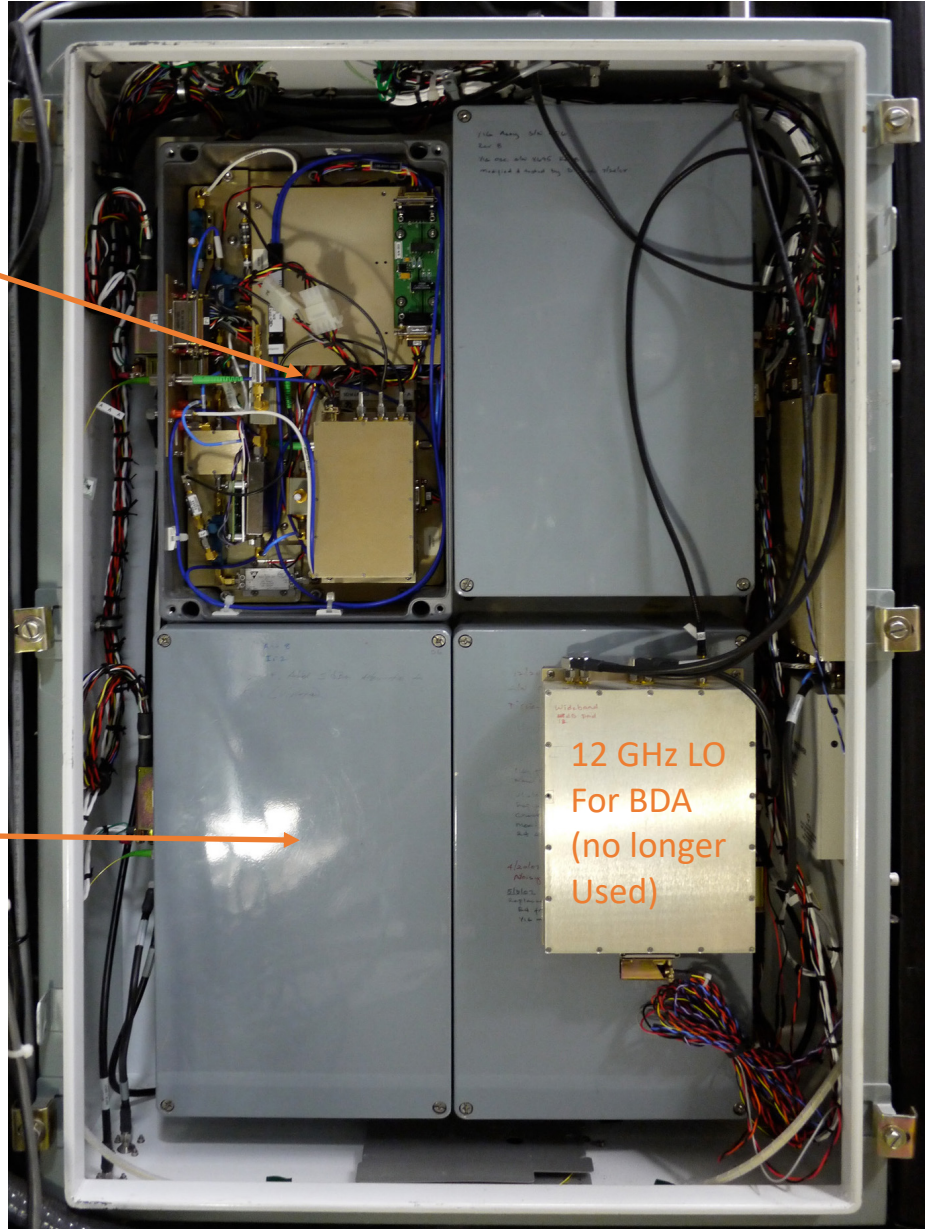


Hoffman Enclosure within Antenna Cabin

Antenna IF Assy, Rx-A

Antenna IF Assy, Rx-B

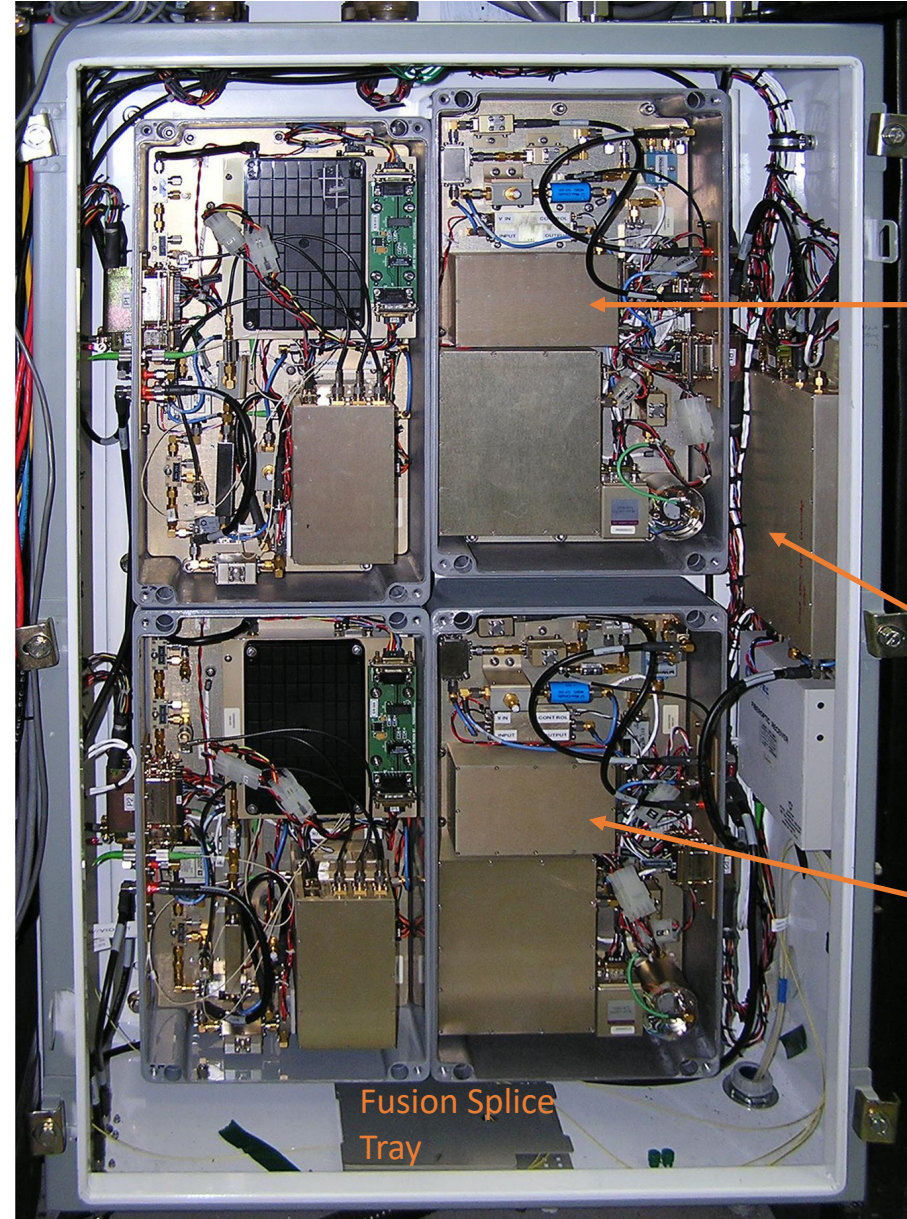


12 GHz LO
For BDA
(no longer
Used)

Antenna YIG Assy, Rx-A

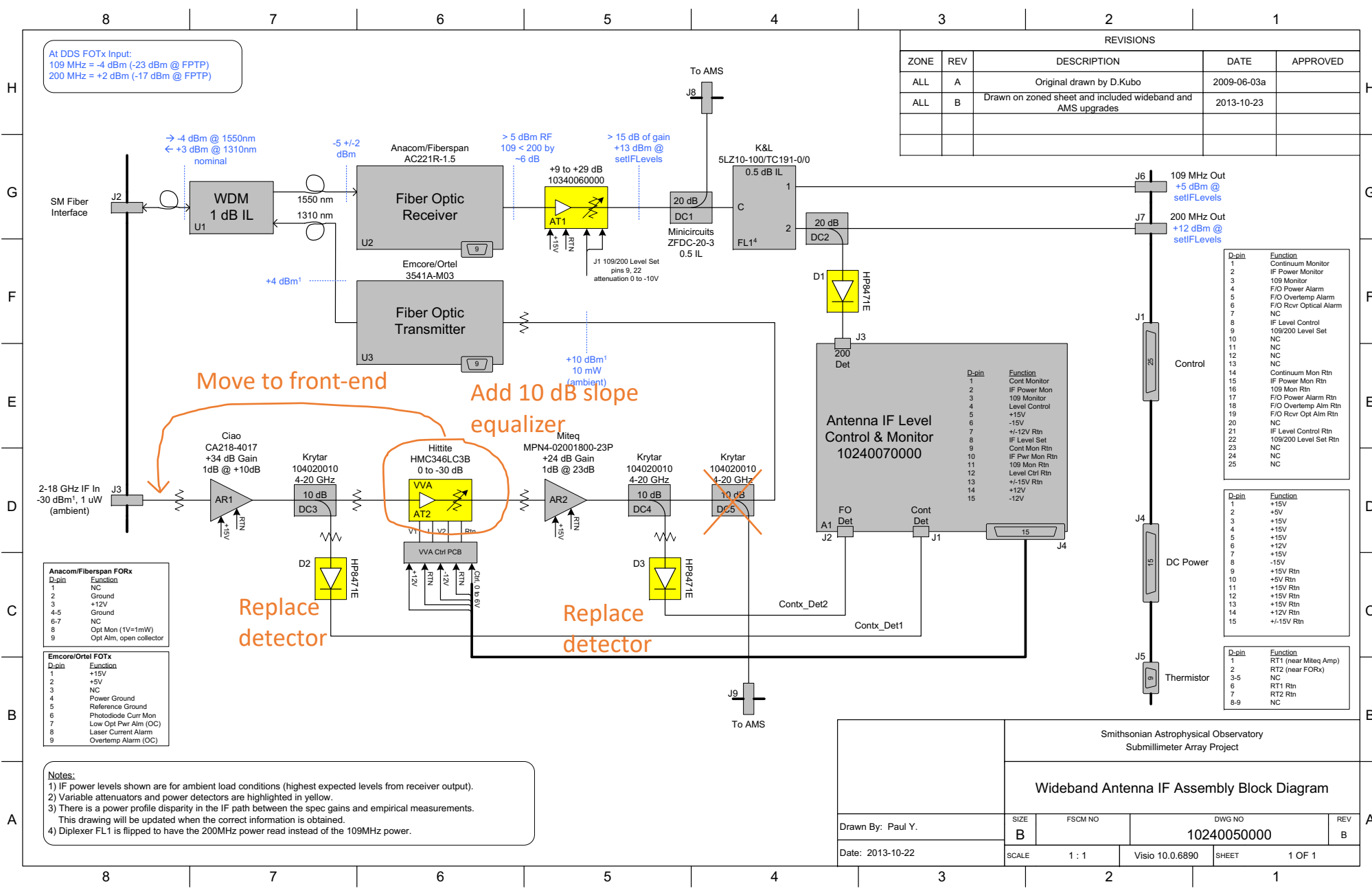
LO Receiver Plate

Antenna YIG Assy, Rx-B



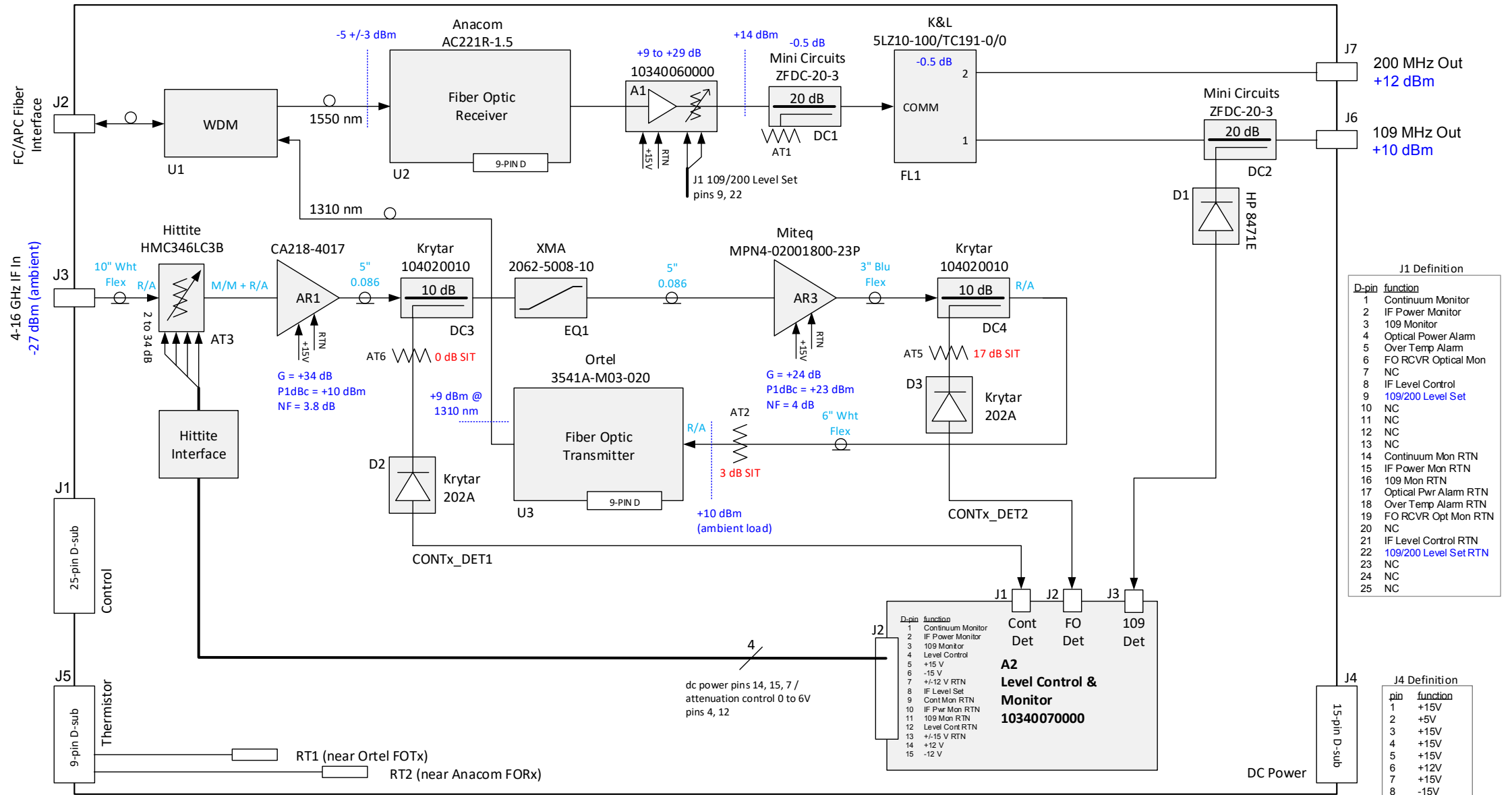
Fusion Splice
Tray

Covers removed



Before Modification

ANTENNA IF ASSEMBLY, 10340050000

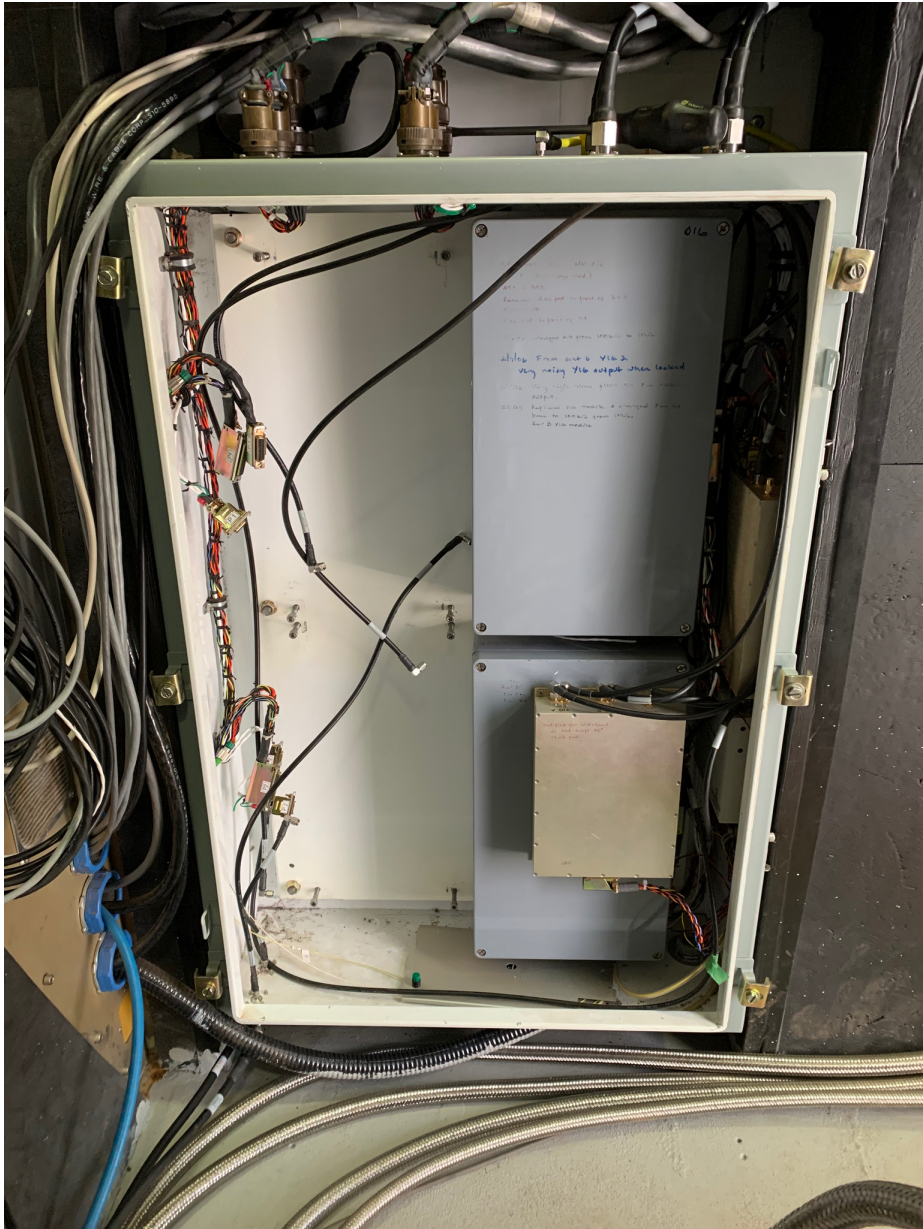


Notes:

1) IF power levels shown are for ambient load conditions (highest expected levels from receiver output)

ant_if_blk
rev 2021-07-20
dkubo

After Modification



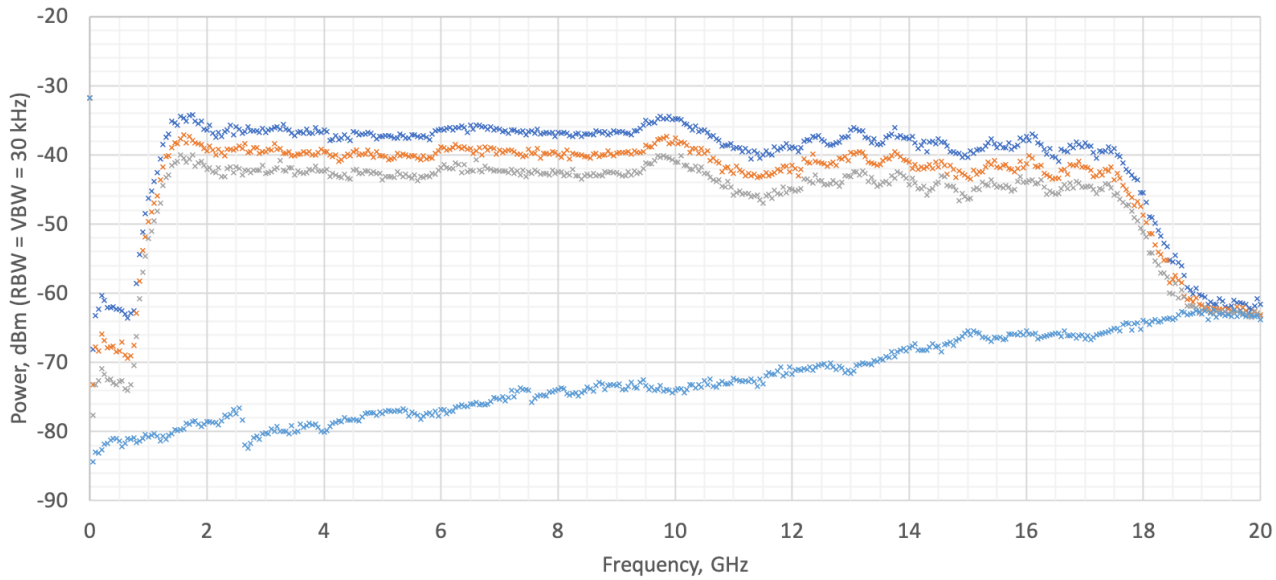
Antenna 7 with IF assemblies removed



Modified Antenna IF assemblies ready for installation

2021-06-09 SN013 Assy, Pre-Modification Response

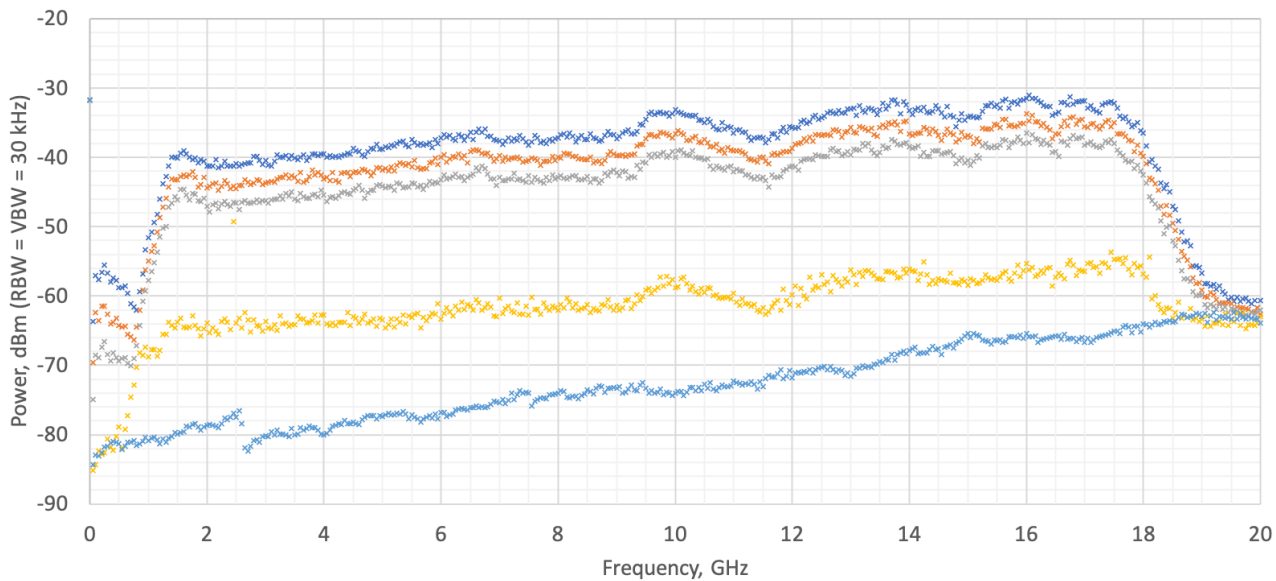
* +12 dBm into FOTx * +9 dBm into FOTx * +6 dBm into FOTx * SA Noise Floor



SN013 Swept response prior to modification

2021-06-09 SN013 Assy, Post-Modification Response, setIFLevels @ -28.3 dBm, Vc = 1.97V

* +12 dBm into FOTx * +9 dBm into FOTx * +6 dBm into FOTx * Noise Floor (Vc = 1.97V) * SA Noise Floor



SN013 Swept response after modification