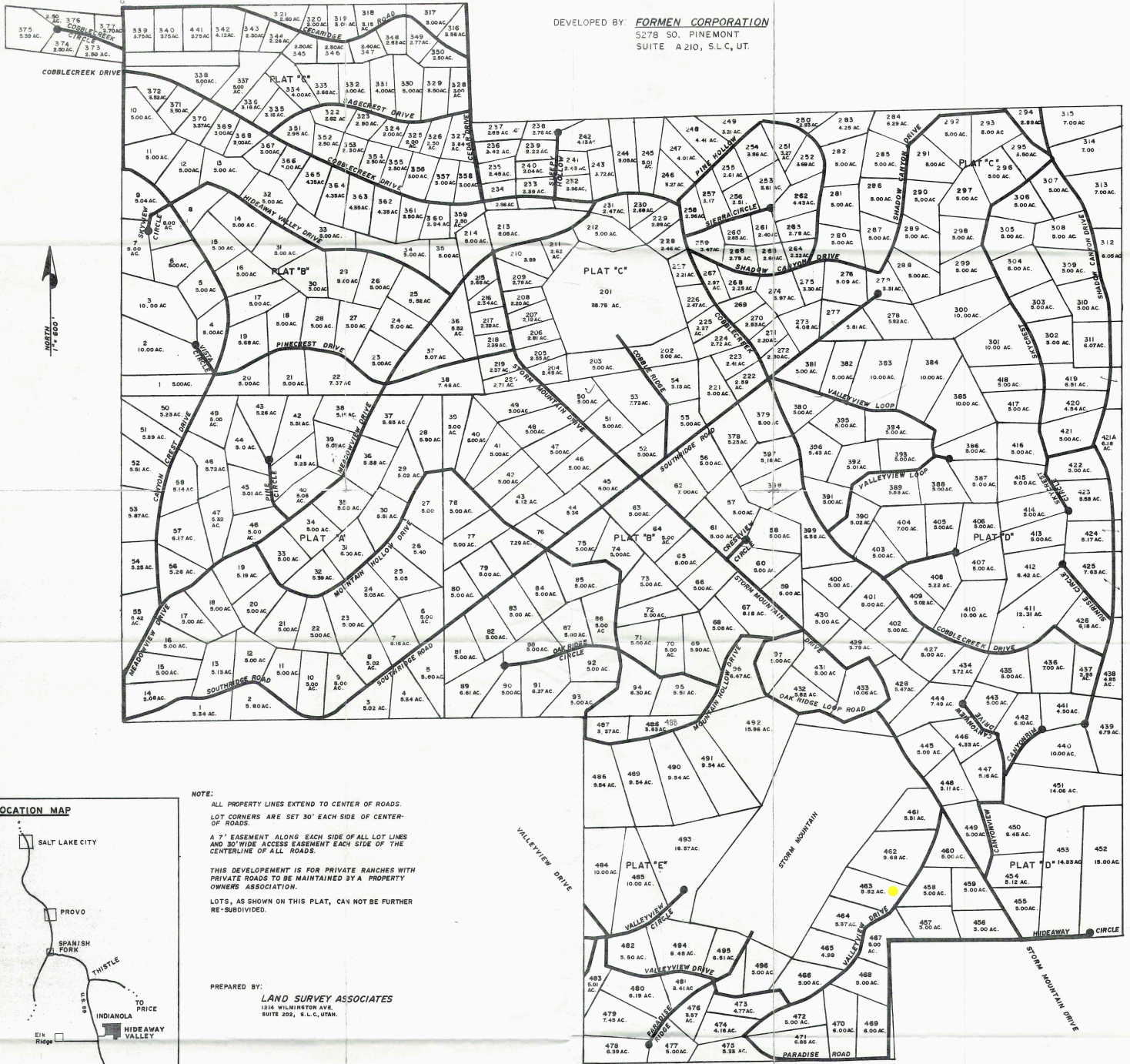


HIDEAWAY VALLEY

DEVELOPED BY: **FORMEN CORPORATION**
5278 SO. PINEMONT
SUITE A210, S.L.C., UT.



NOTE:
ALL PROPERTY LINES EXTEND TO CENTER OF ROADS.
LOT CORNERS ARE SET 30' EACH SIDE OF CENTER OF ROADS.
A 7' EASEMENT ALONG EACH SIDE OF ALL LOT LINES AND 30' WIDE ACCESS EASEMENT EACH SIDE OF THE CENTERLINE OF ALL ROADS.
THIS DEVELOPMENT IS FOR PRIVATE RANCHES WITH PRIVATE ROADS TO BE MAINTAINED BY A PROPERTY OWNERS ASSOCIATION.
LOTS, AS SHOWN ON THIS PLAT, CAN NOT BE FURTHER RE-SUBDIVIDED.

PREPARED BY:
LAND SURVEY ASSOCIATES
1216 WILMINGTON AVE.
SUITE 305, S.L.C., UTAH.

LOCATION MAP

