



Rules and Regulations

2024

## FOREWORD

The National Walking Horse Association (NWHHA) is a non-profit organization formed to do the following:

- To promote and increase public awareness of the true and inherent abilities of the Walking Horse
- To provide an equitable horse show affiliation program for Walking Horses, Spotted Saddle Horses and Racking Horses to be exhibited, judged, and showcased in full compliance with the Horse Protection Act.

The NWHHA will accomplish these goals through:

- Rules that are enforced fairly and consistently.
- A judge's program that trains judges to place horses in compliance with the Rule Book.
- A designated qualified person (DQP) program with thorough and fair inspections.

The term Rules, when used herein, are the Rules of the National Walking Horse Association unless otherwise stated.

These Rules may be changed and amended from time to time by the  
National Walking Horse Association.

In addition to the Rules contained herein, NWHHA Standard Operating Procedures (SOP's) contain instructions regarding routine operations. All NWHHA SOP's are publicly accessible on the NWHHA website along with these Rules.

*© 2021 National Walking Horse Association. Any use of the National Walking Horse Association Rules and Regulations or Versatility Rule Books, in whole or in part, is strictly prohibited unless used at National Walking Horse Association affiliated or sanctioned events. Permission to use materials may be requested.*

### NATIONAL WALKING HORSE ASSOCIATION

P.O. Box 12430

Reading, PA 19612

859-252-NWHHA (6942)

Visit our Web Site at: [www.nwha.com](http://www.nwha.com)

<b>1</b>	<b>Table of Contents</b>	
1.	DEFINITIONS	1
1.	AGE	1
1.1.1	Equine	1
1.1.2	Exhibitor	1
a. 2.	Designated Qualified Personnel	1
b. 3.	Family	1
2	AFFILIATION & SANCTION	2
1.	Definitions	2
2.	Affiliation & Sanction Procedures	2
3.	DQP Fees	2
4.	Event Conclusion Reporting	3
3	SHOW MANAGEMENT	3
3.1	Show Officials	3
3.2	Duties of Show Management	3
3.3	Duties of Show Secretary	4
4	HORSE SHOW REGULATIONS & PROCEDURES	5
4.1	General	5
4.1.1	Class Interruptions	5
4.1.2	Serviceable Soundness	5
4.1.3	Stallions	5
4.1.4	Drugs and Medications and Tail Blocking	6
4.1.5	Entries	6
4.1.6	Horse's Names	7
4.1.7	Membership & Show Card	7
4.1.8	Joint Ownership, Leases & Contracts	7
4.1.9	Refusal of Entries	7
4.1.10	Measurement of Height	8
5	DIVISIONS & CLASSES	8
5.1	General Requirements	8
5.2	Halter Division	8
5.2.1	Breeding Classes	9
5.2.2	Halter Classes	9
5.2.3	In Hand Classes	9
5.3	Rail Class Division	9

5.4	Versatility Division	9
6	CLASS DEFINITIONS	2
6.1	Age Classes	2
6.1.1	Exhibitors	2
6.1.2	Equine	2
6.2	Amateur Classes	2
6.3	Amateur Owned and Trained Classes	2
6.4	Local Classes	2
6.5	Novice Classes	2
6.6	Open Classes	11
6.7	Owners Classes	11
6.8	Youth Classes	11
6.9	Qualifying Classes	11
6.10	Championship Classes	12
7	EXHIBITORS	12
7.1	Exhibitors	12
7.1.1	Exhibiting by Persons on Suspension	12
7.2	Amateur	12
7.3	Amateur Owned and Trained	13
7.4	Non-Amateurs	14
7.5	Trainer	14
7.5.1	Relative of a Professional	15
7.5.2	Changing from Professional to Amateur Status	15
8	ATTIRE & EQUIPMENT	15
8.1	General	15
8.2	Attire	15
8.3	Tack & Equipment	2
8.3.1	Saddles	2
8.3.2	Bridle & Bits	2
8.3.2.1	Bit Definitions	2
8.4	General	2
8.5	Equipment	17
9	SHOEING	18
9.1	Shoes	18
9.1.1	PLANTATION SHOE	18

9.1.2	PARK LITE SHOD SHOE	19
9.1.3	LITE SHOD SHOE	19
9.1.4	KEG SHOE	19
10	JUDGES	20
10.1	GENERAL	20
10.1.1	Classification of Judges	20
10.1.2	Licensure Requirements	20
10.1.3	Responsibilities of a Judge	20
10.1.4	Regulations Governing Judges	21
10.1.5	Disciplinary Actions	21
10.2	Judging Systems	21
10.2.1	Majority Opinion Three-Judge System	21
10.2.2	High-Low Olympic Judging System	24
10.3	Judging Procedures & Criteria	24
10.3.1	General Judging Procedures	24
10.3.2	Reverse	26
10.3.3	Lineup	26
10.3.4	Time-outs	26
10.3.5	Workouts	26
10.3.6	Falls	26
10.3.7	Unruly Horse	27
10.3.8	Qualifying Gaits	27
10.3.9	Bad Image	28
10.3.10	Presentation	2
10.4	All Day Pleasure Classes	2
10.4.1	Required Gaits of All Day Pleasure Classes	2
10.5	Country Pleasure Classes	2
10.6	Trail Pleasure Classes	30
10.7	Lite Shod Pleasure Classes	31
10.8	Park Lite Shod Classes	31
10.9	Plantation Pleasure Classes	31
10.10	Western Pleasure Classes	32
10.11	Spotted Saddle Horse	32
10.11.1	Divisions and Shoeing	33
10.11.2	Trail Pleasure Division	33

10.11.3	Lite-Shod Division	33
10.11.4	Open Shod Division	33
10.12	Racking Horse	34
10.12.1	Divisions and Shoeing	34
10.12.2	Trail Pleasure Racking	34
10.12.3	Pleasure Racking	34
10.12.4	Country Pleasure Racking	35
10.12.5	Style Racking	35
10.12.6	Speed Racking	35
10.12.7	Open Western Pleasure Racking	35
10.13	Versatility Classes	36
10.14	Halter Classes	36
10.14.1	General	36
10.14.2	Equipment	37
10.14.3	Judging Emphasis	37
10.14.3.1	Breeding Classes	37
10.14.3.2	Halter Classes	37
10.14.3.3	In-Hand Classes	38
11	DQP	38
11.1	Definition	38
11.2	Enrollment of DQPs	38
11.3	Annual DQP Refresher Course	38
11.4	Regulations Governing DQPs	39
11.5	Cancellation of DQP Approval	39
11.6	Authority	39
11.7	Duties	40
11.8	Responsibilities	40
11.9	Inspection procedures	40
12	Disciplinary Policies and Procedures	42
12.1	NWHA Jurisdiction	42
12.2	Verbal or Physical Abuse	42
12.3	NWHA Events	42
12.4	Event Violations	42
12.5	Show Management Reported Violations	43
12.6	DQP Reported Violations	43

12.6.1	Legal Definition of “Sore”	43
12.6.2	Violations & Penalties	44
12.6.2.1	Technical Violation -- Pre-Show and Post-Show	44
12.6.2.2	Horse Protection Act Violations -- Pre and Post SHOW	45
12.7	Notification	47
12.8	Show Management Jurisdiction	47
12.9	Suspensions	48
12.10	Immediate Disqualifications	49
12.11	Additional Penalties	49
12.12	Hearing Committee	49
12.13	Hearing Committee Jurisdiction	51
12.14	Hearing Committee Procedures	52
12.14.1	Re-Hearing	53
12.15	Adjudication without Hearing, Plea Agreement	53
12.16	Hearing Procedure for Violations Reported by the DQP	53
12.17	Decisions Not Subject To Protest	54
13	PARTS OF THE HORSE	55
14	ILLUSTRATIONS	56
15	SHOE MEASUREMENT GUIDELINES	60
15.1	Figure 7 – Go/No-Go Tool	60

## 1. DEFINITIONS

### 1. AGE

#### 1.1.1 Equine

- a. For competition purposes, a horse shall be considered to be one year of age on the first day of January following the date of foaling.
- b. **EXCEPTION:** Foals born in September, October, November and December will automatically be considered a weanling on the first day of January following the date of foaling. The foal will be included as a yearling the following January 1<sup>st</sup>, and as a two-year old the next January 1<sup>st</sup>. This age sequences will continue for the duration of the horse's life.
- c. For competition purposes, the age of horse will be governed and determined by the rules and regulations of the breed registry and/or the general consensus of the industry standard.
- d. A Junior horse is one that is five years of age or younger. **EXCLUDING:** Weanlings and Yearlings.

#### 1.1.2 Exhibitor

- a. **YOUTH:** For competition purposes, a youth exhibitor is an individual who on January 1<sup>st</sup> of the competition year, has not yet reached his/her 18<sup>th</sup> birthday. (An exhibitor who turns 18 on January 2<sup>nd</sup> is eligible to show as a youth exhibitor the duration of the competition year.)
- b. A youth exhibitor may compete in any amateur classes unless the prize list specifies otherwise.

#### a. 2. Designated Qualified Personnel

A Designated Qualified Person (DQP) is trained to detect a horse which may be in violation of the Horse Protection Act (HPA).

- a. DQP when used herein refers to Designated Qualified Personnel.

#### b. 3. Family

- a. For horse show purposes, the term, "immediate family" shall include the following: Spouse, parent, step-parent, child, step-child, sibling, half-sibling, in-laws of the same relations stated herein, grand-parents and grand-children.
- b. For membership purposes, the term, "family" shall include 2 adults who are immediate family or 2 adult parents or custodial guardians and their children under the age of 18 who are eligible youth exhibitors.



## **2 AFFILIATION & SANCTION**

### **1. Definitions**

- a. NWHHA, when used herein, represents the formal name, NATIONAL WALKING HORSE ASSOCIATION.
- b. The terms Affiliation and/or Sanction when used herein, includes all events which have been accepted by the NWHHA and have agreed to adhere to and abide by the rules of such.
- c. The term RULES, when used herein, refers ONLY to the rules of the NWHHA unless otherwise stated.
- d. AFFILIATION – Any event in which the NWHHA has accepted and is the governing HIO. An event is considered to be “affiliated” upon satisfying the procedures outlined in Section 2. Affiliated events have agreed to use only NWHHA licensed officials along with NWHHA appointed DQP’s in all Walking horse classes and to abide by all the rules and regulations and procedures of the NWHHA.
- e. SANCTION – Any event in which the NWHHA has recognized, that does not offer any traditional Walking Horse rail classes. An event is considered to be “sanctioned” upon satisfying the procedures outlined in Section 2.

### **2. Affiliation & Sanction Procedures**

Any event may apply for Affiliation and/or Sanction. An application for Affiliation and/or Sanction is required and must be completed in its entirety. Applications shall be submitted to the NWHHA office along with corresponding fees:

- All affiliated shows and sales: \$35.00
- All sanctioned events: \$25.00

To allow sufficient time for Affiliation/Sanction approval, application must be made not less than 30 days prior to the event date. ALL events must provide a show bill or prize list or sales catalog which includes the following information:

- a. Name, location, dates and time of event
- b. Manager’s name, address, email and phone number
- c. Show secretary name, address, email and phone number (if applicable)
- d. Name of judge(s) (if applicable)
- e. NWHHA logo
- f. Number of placings to be awarded- ribbons, trophies or prizes, e.g., First through 6<sup>th</sup> place ribbons, trophies for 1<sup>st</sup> with ribbons to fifth place, paybacks beginning at 3<sup>rd</sup> place, etc.
- g. Other if applicable: Name of charity, any prize money offered

### **3. DQP Fees**

Affiliated events shall remit the following fees depending on event type for DQP inspections:

- a. \$4.00 per horse, per day regardless of the number of times shown.
- b. \$2.00 per horse, per day regardless of the number of times shown for the following events:
  1. First time NWHHA affiliated shows,
  2. NWHHA Regional Championship
  3. 4-H Club shows
- c. \$5.00 per sale consignment inspected by the DQP for all sales Affiliations.

#### **4. Event Conclusion Reporting**

Within 15 days after the conclusion of the affiliated or sanctioned event, the following shall be furnished to the NWHHA:

- a. Payment in full of all collected fees
- b. NWHHA Memberships Forms and any Temporary Show Card Forms for all non-NWHHA members who exhibited in any NWHHA regulated class with the exception of youth exhibitors. Reference Rule 4.1.7 for memberships and show cards fees and information
- c. DQP fees
- d. Other fees as required by the NWHHA
  1. Regional shows must remit \$20.00 per entry shown.
- e. Copy of each class sheet, showing all entries and class winners, including complete names and addresses of both owners and trainers on all horses inspected which are under the jurisdiction of the Horse Protection Act (HPA). Not required of Sale Management
- f. Sanctioned Events shall submit official results if said event has an official Judge
- g. Post Show Report form furnished by the NWHHA
- h. Final copy of Premium List, Event Details and/or Program or Sale Catalog reflecting all changes if any of the event
- i. Judge's Cards

### **3 SHOW MANAGEMENT**

#### **3.1 Show Officials**

The term "Show Officials" may include, but is not limited to, the following:

- Show Management
- Show Secretary
- Judges
- DQPs
- Veterinarians
- Timekeepers
- NWHHA Representatives

#### **3.2 Duties of Show Management**

It shall be the duty of Show Management to enforce all the Rules of the NWHHA from the time entries are admitted to the show grounds until their departure. In particular, it shall be Show Management's duty to:

- a. Hire NWHHA approved Judges or to obtain, if necessary, approval for a guest Judge to officiate.
- b. Use DQPs assigned by the NWHHA.
- c. Order the DQP to measure any horse whose height, length of foot or shoe dimensions are protested by an exhibitor. Such measurement shall take place immediately. The decision of the Show Officials shall not be overturned by the NWHHA.
- d. Eliminate, without waiting for a protest to be made, any entry that is found to be ineligible.
- e. Receive and act upon protests in accordance with the Rules, and to report whatever action is taken to the NWHHA. In the event that a person participating at a show shall commit an offense or violation described in the Rules, Show Management, at its discretion, may disqualify that person from further participation in that show only. Any such offense shall be reported to the NWHHA for whatever further action is deemed necessary. In the event a Protest is upheld, the class will be re-tied.
- f. Provide a telephone at shows where horses are stabled overnight.

- g. Provide all necessary physical facilities to accommodate the show, including an area set aside for the inspection of horses by DQPs and to provide the necessary personnel for the DQP to carry out his/her duties.
- h. Provide a veterinarian on the grounds or on a stand-by status at the show.
- i. Abide by all decisions made by a Judge or DQP and in no way try to influence their decision or their procedure.
- j. Cooperate in whatever way requested with the USDA and enforce their rules.
- k. Ensure the personal safety of all officials representing the NWHHA.
- l. Employ the following personnel as needed to ensure a successful show:

- Show Manager
- Show Secretary
- Announcer
- Ringmaster
- Gate Attendants

And the following optional personnel as determined by Show Management:

- Organist
- Ring Clerks
- Farrier
- Law Enforcement Personnel
- First Aid Personnel/Emergency Medical Personnel
- m. Ensure that no manager serves as a Judge or DQP at his/her own show.
- n. Ensure that the DQP, Judge, Ringmaster or the person that hires/contacts the Judge, nor members of their immediate family, compete in a show at which they are participating in an official capacity, nor shall any horse owned by any of the above be shown at this show.
- o. To disqualify any exhibitor &/or exhibitor's entries for cause, which shall include the forfeiture of all exhibitor's winnings and ribbons at the show in which disqualified; and, if found by Show Management to be necessary, to require the horses of exhibitor be removed from the grounds including having them removed at exhibitor's expense and without liability for damages of any type whatsoever as a result of Show management's disqualifying actions. The NWHHA official responsible shall be notified contemporaneously regarding any disqualifying actions taken by Show management.
- p. Cause to be posted in a conspicuous place during the show, the Judges' cards, or copies thereof, at those shows which employ a multi-judge system.

### 3.3 Duties of Show Secretary

The Secretary is responsible for all matters in connection with entries. In the absence of a show secretary, show management shall assume the duties of the show secretary.

- a. Apply annually to the NWHHA for dates for the show. In case of a conflict, the NWHHA shall arbitrate and make a decision. Allow at least 30 days between the date of application and the show date requested. The NWHHA may withhold assignment of a date for an affiliated show if the show has indebtedness to the NWHHA.
- b. Furnish a copy of the prize list to the NWHHA immediately upon publication.
- c. The following must be included on the premium list:

**“Persons on federal disqualification cannot transport horses to this show and can participate only as a spectator.”**

- d. Provide the NWHHA all class entry information, including the Judge's completed cards, 15 days after the show, indicating the placing's in all classes.

- e. Send in a list of Show Officials officiating the show.
- f. Furnish the DQP with the following:
  - Class sheets on each class that is to be inspected.
  - Copy of premium list and/or program.
- g. Maintain a copy of the current NWHHA Rule book available for reference at all times during the show.
- h. Report in writing to the NWHHA any act on the part of any person deemed prejudicial to the best interests of the NWHHA. Matters to be so reported include discourtesy to a judge, DQP, show official and spectator, removal by an exhibitor of his/her horses from the show grounds, or withdrawal from the show after it has commenced without permission.

## **4 HORSE SHOW REGULATIONS & PROCEDURES**

### **4.1 General**

The Rules of the NWHHA shall take precedence over any other rules. Show Management may make rules more stringent but not less stringent. Every show and every person participating therein including: Exhibitor, Trainer, Owner, Lessee, Manager, Agent, Rider, Driver, Judge, DQP, Show Official, or Employee is subject to the Bylaws and Rules of the NWHHA and to the local rules of the show. Every person participating in any show recognized by the NWHHA is subject to the provisions of the NWHHA whether or not the particular class in which he/she participates is operated under the NWHHA.

#### **4.1.1 Class Interruptions**

In the event that a class, in which horses compete, whether collectively or individually, is stopped while in progress due to storm, accident or other emergency, the following procedures shall govern:

- The class, when recommenced, shall be held over in its entirety and no consideration shall be given to the performance during the original session.
- If classes are postponed to a day not included in the original show dates exhibitors are entitled to a refund of entry fees and are relieved of any obligation to show back in postponed classes.

#### **4.1.2 Serviceable Soundness**

All horses shown at a NWHHA affiliated show or sale must be serviceably sound for horse show purposes and must not show evidence of lameness, broken wind or complete loss of sight in both eyes (discretion of the judge; stallions and mares in breeding classes excepted.) The official veterinarian's decision, if requested by the Judge, as to the serviceable soundness of a horse shall be final. If the official veterinarian is not immediately available or called on, the Judge's decision as to serviceable soundness of a horse shall be final.

#### **4.1.3 Stallions**

Stallions shall be barred from any class in which the conditions specify that a youth exhibitor is to ride.

#### 4.1.4 Drugs and Medications and Tail Blocking

No horse shall be administered any stimulant, depressant, tranquilizer or local anesthetic which might affect the performance of a horse. Stimulants and depressants are defined as medications which stimulate or depress the circulatory, respiratory or central nervous systems. Horses suspected of being illegally medicated will have blood drawn and tested by a licensed veterinarian. If a veterinarian is not readily available the Judge's decision is final.

- a. The use of "ginger", any foreign substance on the pastern area, and any drug, regardless of how harmless or innocuous it might be, which by its very nature masks or screens the presence of aforementioned prohibited drugs, or prevents or delays testing procedures is prohibited.
- b. Entries showing signs of being sedated or tranquilized shall be excused by the Judge in Halter classes.
- c. Altering the tail to inhibit a horse's ability to raise the tail at or above the horizontal plane or swing the tail side to-side is prohibited. Prohibition includes application or administration of any drug, chemical, foreign substance, surgical procedure, and anchoring a horse's tail to a fixed point (i.e. tail tying). NWHHA reserves the right to request an examination by an NWHHA approved veterinarian at the owner's expense. **Exceptions:** Horses who have had their tails surgically altered for a traditional tail-set can lift their tail above the horizontal plane and are therefore permitted to show.
- d. Persons involved may be required to forfeit all prize money and any trophies, ribbons and "points" won at said competition. The owner must pay a fee of \$50.00 to show management. Points accumulated toward year end awards prior to said competition may be nullified. A Trainer and/or owner of a horse found to be in violation of the previous rule is subject to whatever penalty is assessed by the NWHHA. Said trainer and/or owner may be fined and may be suspended from all competitions at the discretion of the NWHHA. The horse may be suspended for any period of time specified by the NWHHA.

#### 4.1.5 Entries

According to the Horse Protection Act, a horse cannot show unless it is first inspected by the DQP. In order for the DQP to inspect horses, all class entry sheets must contain the following information:

- Horse's official name.
- Trainer's name.  
(if the trainer is also the Amateur/Owner, put "same as owner" in the trainer column.)
- Amateur name and NWHHA membership number.
- Mailing address of Trainer, Owner, and Exhibitor.

- a. The entry blank of each show must contain a certification to the NWHHA signed by the Exhibitor or his Representative, to the effect that:

***Every entry shall constitute an agreement that the person making it, Owners, Exhibitors, Lessee, Trainer, Manager, Agent, Coach, Rider and the horse shall be subject to the Bylaws and the Rules of the NWHHA and the local rules of the show. Further it shall constitute a declaration that the horse and/or rider is eligible as entered and that the owner and all of his/her representatives are bound by the bylaws and Rules of the NWHHA and the show and accept as final the decision of the NWHHA on any question arising under said Rules, and agree to hold harmless the show, the NWHHA, its Officials, Directors and Employees for any action taken.***

- b. Failure of a show to require that such entry blank be signed shall constitute a violation of the NWHHA rules.

- c. Should an Exhibitor, his/her Agent, or Trainer fail to sign an entry blank as required, his/her first entrance into the ring as an exhibitor shall be interpreted as acceptance of the Rules of the NWHHA and shall ipso facto render him/her subject to said Rules.
- d. Violation of the Rules in connection with entries may be cause for disqualification of the exhibitor, agent and/or trainer by the Show Management.

#### **4.1.6 Horse's Names**

Horses entered do not have to be registered, but a horse must be entered under its officially recorded name or name by which it is known. It must also be entered under the name of the Owner of record.

- a. Double registered horses: If a horse has different names with different breed registries, the horse must be entered using the registered name of the breed in which the horse is being shown.

#### **4.1.7 Membership & Show Card**

To be eligible to show in an NWHHA regulated class everyone must have a current NWHHA membership card, appropriately designated by Amateur or Open Exhibitor Status. Membership cards are optional for Youth exhibitors only, except at the NWHHA National Show where membership is required for all exhibitors.

- a. In lieu of purchasing a membership, exhibitors can opt to purchase a Temporary Show Card for a single event. The temporary show card is a non-member option and does not include any NWHHA membership benefits. Temporary show cards are not available for the NWHHA National Championship show where NWHHA membership is required for all exhibitors.

#### **4.1.8 Joint Ownership, Leases & Contracts**

Joint owned horses must be entered under the names of all owners. Joint owned horses are eligible to be shown in owner's and amateur classes when exhibited by any joint owner(s) or members of their immediate family as long the exhibitor meets the class criteria.

- a. Leases are permitted and must be filed in the NWHHA office and presented at entry upon request. Leases must be for a one-year term.
- b. AOT horse ownership established by joint ownership, leases or contracts is forbidden.
  - a. Exception: Joint ownership through immediate family members is permitted. See section 1.1.2 Exhibitor b. 3. Family for definition of "immediate family."
- c. Any lease executed with a trainer or other professional upon termination, the horse must satisfy the 90 day wait period before returning to AOT status.
- d. Contracts may be permitted upon request and approval by the NWHHA. Contracts should be submitted for approval at least 90 days prior to any event.

#### **4.1.9 Refusal of Entries**

In addition to entries of persons suspended by the NWHHA or the USDA, Show Management reserves the right to refuse the entry of an exhibitor who has demonstrated un-sportsmanlike behavior at a show or has conducted him/herself in a manner which brings discredit to the show, its management, officials, or employees, provided the exhibitor so excluded shall have the right to be heard on the issue by Show Management before the refusal of entry is made.

- a. No entry shall be admitted into the show ring once the gate is closed and judging has commenced.

#### **4.1.10 Measurement of Height**

Stand the animal on a smooth, level surface, in such a position that the front legs are vertical and the backs of the hocks are in a vertical line with the points of the horse's quarters. The head should be held low enough to reveal the highest point of the withers from the ground.

The arm of the Measuring Standard shall be placed over the highest point of the withers and no measurement taken at any other part of the horse's body shall be considered. The Standard must be a straight, stiff, rigid stick and should be provided with a plumb bob or spirit level to make sure the standard is perpendicular from the withers to the ground and that the cross piece is parallel with the ground surface.

- a. The height of all animals shall be stated in "hands" instead of "inches." A hand is four inches. Maximum height shall be reckoned as so many hands "and under" while minimum heights shall be reckoned as "over" a given number of hands.
  - Horses are greater than 14.2 hands.
  - Ponies must be 14.2 hands and under.
- b. The term "horse" as used in these rules denotes either a horse or pony.
- c. When the term "horse" or "pony" is used in prize lists and catalog of shows where height is one of the qualifications of the class, the word "horse" shall designate animals over 14.2 hands. The word, "pony" shall designate animals 14.2 hands and under.
- d. An animal 14.2 hands or under may compete as a horse in one class and a pony in another class at the same show unless otherwise specified on the show bill.

## **5 DIVISIONS & CLASSES**

Classes at NWSHA Affiliated Shows are categorized in the following divisions as listed below.

Exceptions to those listed might be Local, Club Interest or Open Breed. Unless otherwise specified, only the horse is judged, although, eligibility of the entry may be determined by the classification of the rider.

### **5.1 General Requirements**

- a. In all classes, horses will be shown in English tack unless specific class requirements indicate otherwise.
- b. In all rail classes except Style Racking and Speed Racking, horses will be required to back.
- c. For exhibitors presenting English horses the order to reverse can be executed by turning either towards or away from the rail.
- d. Barefoot horses may be shown however, judges must disqualify lame or tender footed horses.
- e. A normal time out to replace a thrown shoe will be allowed.
- f. There shall be no curb chain or cavesson adjustment upon the reverse.
- g. In timed events and/or individually worked classes such as barrels, pole bending, western riding, trail, etc. a particular horse counts as one entry no matter how many people ride it. The only time a horse can be entered in a timed event or trail class with two different riders and count as two entries is if the class is an open class and one of the riders is an adult and other is a youth exhibitor, and this is allowed only if there is no other class for the adult or youth exhibitor.

### **5.2 Halter Division**

Halter division entries are presented in hand, in either a show halter or bridle as dictated in the specific class requirements. Entries showing obvious outward signs of being sedated or tranquilized shall be excused by the Judge in Halter classes. Breeding or In-Hand classes may be offered. For each class offered, the prize list shall specify the age, sex and manner of showing.

### 5.2.1 Breeding Classes

Open to all exhibitors in keeping with specific class requirements. Suggested classes are:

- Mare and Foal Class.
- Get of Sire Class.
- Produce of Dam (2 or more offspring).

### 5.2.2 Halter Classes

Open to all exhibitors in keeping with specific class requirements. Suggested classes are:

- Weanlings.
- Yearlings.
- Two-Year Old.
- Championship Classes.

Halter classes may further be divided by sex of entries.

### 5.2.3 In Hand Classes

Open to all exhibitors in keeping with specific class requirements. Entries must be two years of age or older. Suggested classes are:

- Stallions.
- Mares.
- Geldings.

## 5.3 Rail Class Division

Rail Classes are classes that are ridden under saddle and are not classified in any other NWHHA Division. Rail Classes may be amateur, youth and/or open, in keeping with specific class requirements. Classes within this division are:

- All Day Pleasure Classes.
- Country Pleasure Classes.
- Lite Shod Pleasure Classes.
- Park Lite Shod Pleasure Classes.
- Plantation Pleasure Classes.
- Racking Horse Classes.
- Spotted Saddle Horse Classes.
- Trail Pleasure Classes.
- Western Pleasure Classes.

## 5.4 Versatility Division

Versatility Classes showcase the abilities of the walking horse. Versatility classes may be amateur, youth and/or open as specified by Show Management, in keeping with specific class requirements.

Classes within this division include:

Competitive Trail Riding

Driving

- Combined Driving
- Obstacle Driving
- Pleasure Driving
- Reinsmanship

Dressage

- Traditional

- Western

Endurance Riding

Equitation

- Walking Seat or Stock Seat

Judged Pleasure Riding

Jumping

- Hunter Over Fences
- Hunter Hack



Model  
Reining  
Showmanship at Halter  
Speed Events  
• Barrel Racing

• Pole Bending  
Trail Obstacles  
Untimed Events  
• Water Glass  
Western Riding

Versatility Classes may be further organized into the following groups:

Untimed Events

*Examples:*

Egg & Spoon  
Ribbon Pairs  
Simon Says  
Ride-a-Buck

Speed Events

*Examples:*

Catalog Race  
Indiana Flags

## 6 CLASS DEFINITIONS

### 6.1 Age Classes

#### 6.1.1 Exhibitors

- YOUTH - may compete in an amateur class unless the prize list specifies otherwise.
- ADULT - 18 years of age or older and are not eligible to show in Youth classes.

#### 6.1.2 Equine

- A junior horse is one that is five years of age or younger. Excluding Weanlings and Yearlings.
- A mature horse is one that is six years of age or older.

### 6.2 Amateur Classes

An Amateur Class is one in which every contestant enjoys amateur status. ***All amateur exhibitors, except youth exhibitors are required to obtain an amateur membership or temporary show card from the NWHHA to be eligible to show.*** Amateur Classes may be restricted to riders who are no longer eligible to compete as a youth exhibitor, in which instance the prize list shall specify "18 and over or Adult".

### 6.3 Amateur Owned and Trained Classes

Amateur Owned and Trained (AOT) Classes are open to horses that are owned and trained by an amateur and may only be exhibited by the owner and/or amateurs within their immediate family.

### 6.4 Local Classes

A Local Class is one in which entrance is restricted by show management to horses owned by residents of a specified locale and which is so described in the prize list. Results of Local Classes shall not be considered in determining show championships awarded on points, nor will they count toward end of the year awards.

- a. Classes which are restricted to members of a club shall be included in the above definition unless memberships are open to and easily obtainable by all exhibitors.

### 6.5 Novice Classes

A Novice Class entry has not won three (3) first place ribbons. Novice eligibility may be applied to either horse or rider or a combination of both. Only NWHHA competitions affect reckoning of Novice

eligibility unless otherwise specified. Single horse classes do not affect reckoning. Eligibility of a novice entry is established as of the date of the closing of entries.

- a. Unless otherwise specified, a Novice Horse Class is open to horses which have not won three first place ribbons.
- b. Unless otherwise specified, a Novice Rider Class is open to riders who have not won three first place ribbons.

## **6.6 Open Classes**

An Open Class is one in which there are no limiting qualifications for the rider.

## **6.7 Owners Classes**

Owners Class is one in which every exhibitor owns the entry being shown or is a member of the owner's immediate family unless otherwise stated in the prize list. Any time there is a question as to ownership of a horse, the owner in question, upon request, must provide sufficient proof of purchase to the satisfaction of the NWA within the time specified.

- a. Owners Classes which specify "18 and Over" shall be limited to exhibitors who are no longer eligible to show in youth exhibitor classes.

## **6.8 Youth Classes**

Youth classes are limited to exhibitors who have not reached their 18th birthday on January 1<sup>st</sup> of the competition year. Youth are not required to obtain a youth exhibitor card to be eligible to show, but must have a NWA youth card to be eligible for NWA programs including year-end high point awards.

- a. If a youth enters the ring and cannot handle the horse and it is a danger to the youth, the Judge or Show Manager shall excuse the entry who shall exit with proper assistance. If a parent determines the youth cannot handle the horse, he/she may request, after proper identification, that the entry be excused and the judge shall comply.
- b. Strapping or taping youth exhibitor's shoes to their stirrups is strictly prohibited and, if detected, entry shall be excused. (Riders are required to have their feet in their stirrups at all times, unless directed otherwise by show officials and in Lead Line classes).
- c. Stallions shall be barred from any class the conditions of which specify that a youth exhibitor is to ride.
- d. Youth Classes designated as 11 and Under, exhibitors may use two hands.
- e. All youth riders are encouraged to wear an ASTM/SEI certified headgear while mounted/driving a horse on show grounds. Riders age 11 and under are required to wear ASTM/SEI certified head-gear at all times while mounted or driving. All youth riders in speed and jumping events are required to wear ASTM/SEI certified helmets.

## **6.9 Qualifying Classes**

An entry shall be deemed to have qualified for a Championship Class, if it has completed a qualifying class regardless of placement.

- If excused after completing a work-out as correctly called for by the judge the horse shall still be considered as qualifying for the appropriate Championship Class.
- In the event an entry is excused by a Judge after or during the initial lineup without request by the exhibitor to be excused, the entry will be considered qualified for the appropriate Championship class.

**Exception:** Entries excused for a rule violation anytime during the class are not considered qualified.

## 6.10 Championship Classes

Show Management must designate all qualifying classes and may require any and all winners in a qualifying class to compete in a Championship Class provided it is so stated in the prize list. Any exhibitor failing to comply shall forfeit all winnings in the qualifying class. If an exhibitor qualifies more than one horse for a Championship Class, he may elect to show only one without penalty. If a horse qualifies for more than one Championship Class the exhibitor may elect to show that horse in only one Championship Class without penalty.

- a. To be "shown and judged" in any class in which horses compete together entries must perform all required gaits both ways of the ring in the original workout and must remain in the ring up to the point of being excused by the Judge.
- b. A horse showing in a No Canter/Lope Class is not qualified to show in a 3 gait Championship Class which requires the canter or lope.

## 7 EXHIBITORS

### 7.1 Exhibitors

Any person who enters any horse, any person who allows his/her horse to be entered, or any person who directs or allows any horse in his/her custody or under his/her direction, control or supervision to be entered in any horse show or horse exhibition.

- a. Any person who shows or exhibits any horse, any person who allows his/her horse to be shown or exhibited, or any person who directs or allows any horse in his/her custody or under his/her direction, control, or supervision to be shown or exhibited in any horse show or horse exhibition.
- b. Any person who enters or presents any horse for sale or auction, any person who allows his/her horse to be entered or presented for sale or auction, or any person who allows any horse in his/her custody or under his/her direction, control, or supervision to be entered or presented for sale or auction in any horse sale or horse auction.
- c. Any person who sells or auctions any horse, any person who allows his/her horse to be sold or auctioned, or any person who directs or allows any horse in his/her custody or under his/her direction, control, or supervision to be sold or auctioned.

#### 7.1.1 Exhibiting by Persons on Suspension

Exhibiting is prohibited by persons on suspension. This includes showing in competition at a horse show, exhibiting a horse at a sale, presenting the National Colors at a horse show or other event, or any other public exhibition of a horse.

### 7.2 Amateur

*If there is a question of whether or not a person is an Amateur, determination shall be made by the NWHHA.*

- a. A person is an amateur for horse show purposes who, after his / her 18th birthday, does not engage in any activities which would cause him/her to be classified as a professional.
- b. A person who has not reached their 18th birthday is declared to be an amateur.
- c. To be eligible to show in amateur exhibitor classes at NWHHA affiliated shows, every amateur exhibitor must have a current Amateur Card. Amateur exhibitors may opt to purchase a Temporary Show Card for each event excluding the NWHHA National Championship. This non-member option provides amateur designation for a single event but does not include NWHHA membership benefits and is not valid or offered at the NWHHA National Championship show.
- d. The following activities shall not affect Amateur Status of a person who otherwise qualifies as an Amateur:

1. Stands a breeding stallion and/or boards horses **unless** it is his/her principal means of income.
2. Writes books or articles pertaining to horses.
3. Accepts remuneration for officiating as a Judge, DQP, Steward, Technical Delegate, Course Designer, Announcer, or as a TV Commentator, or for services as a Veterinarian, Groom, Farrier or Tack Shop Operator.
4. Any person who serves an internship for college credit through his/her respective accredited college program and who had never held professional status can accept reimbursement for expenses without profit.
5. A person can give riding lessons for expenses only but not train horses. Expenses are defined as the following:
  - If using your personal horse – expenses involved in upkeep of said horse, i.e., feed, shelter, tack, farrier services, worming, vaccines, veterinary expenses and grooming supplies.
  - If using student's horse – the current government allowable POV mileage rate.
  - Persons acting as counselors at a camp who are not hired in the exclusive capacity of riding instructor and persons giving instruction and training to the disabled.
  - Accepting a token of appreciation, other than money, for riding, driving or showing in halter/in hand. (Note: Horse board, prize money, partial support or objects of more than \$300 value are considered remuneration, not small tokens of appreciation.) (Also Note: Accepting any amount of money, whether more or less than \$300.00 is considered remuneration.) Prize money won by an Amateur-owner rider/driver/handler in any class, other than Showmanship, is not considered remuneration.
  - Money prizes to winners in Equitation or Showmanship classes for Amateurs are forbidden.
  - Anyone who engages a person to ride or drive in an Amateur Class and then pays or remunerates that person in excess of what is allowable as provided in this section shall be subject to disciplinary action by NWAH.

### **7.3 Amateur Owned and Trained**

Amateur Owned and Trained (AOT) horse(s) are trained by their Amateur Owner.

- a. AOT Ownership Requirements
  1. AOT horse ownership established by combined ownership including partnerships, farms or businesses is prohibited. Lease agreements or contracts are prohibited.
  2. If a horse is purchased with the intentions of showing in AOT, a 90 day wait period is required prior to being shown in AOT classes.
  3. Any time there is a question as to ownership of a horse, the owner in question, upon request, must provide sufficient proof of purchase to the satisfaction of the NWAH within the time specified.
- b. AOT Training/Handling and Exhibitor Requirements
  1. An AOT horse cannot be ridden, trained, schooled or participate in lessons by a professional 90 days prior to being shown in an AOT class. Lessons on an AOT horse for versatility events are permitted.
  2. An AOT horse can participate in NWAH-sponsored clinics without compromising their AOT status. An AOT horse can also participate in non-NWAH-sponsored clinics as long as the clinic is advertised and available to the general public or NWAH members.
  3. An AOT exhibitor cannot be coached or assisted by a professional trainer at a horse show. If an AOT exhibitor needs assistance in holding a horse so that they can remove or re-saddle

their horse during DQP inspection, the AOT exhibitor will not be penalized if they are assisted by a non-amateur status exhibitor.

4. An immediate family member of a non-amateur or a professional trainer is prohibited from exhibiting in AOT classes.

#### **7.4 Non-Amateurs**

A person is not an Amateur for horse show purposes if after his/her 18th birthday that person:

- a. Engages in brokering, dealing in, hiring out, acts as a paid agent or takes on consignment for the purpose of sale or training horses/ponies other than those owned wholly or in part by him/her or by a family member.
- b. Accepts remuneration for riding, schooling, driving, showing in halter/in hand classes, training or conducting seminars. ***See Section 7.2 (d) (5) for exception.***
- c. Accepts prize money in Showmanship classes. Prize money may be accepted by Amateur riders in Dressage.
- d. Rides or shows in halter/in hand in horse shows any horse for which he/she or family member accepts remuneration for boarding or training for a person outside of the immediate family.
- e. Accepts remuneration for employment in any capacity rides or shows in halter/in hand in horse shows, any horses which his/her employer or a member of the immediate family of such employer owns, boards or trains.
- f. Accepts remuneration for the use of his/her name, photograph or other form of personal association as a horseperson in connection with any advertisement or article to be sold.
- g. Stands a breeding stallion as his/her principal means of income.
- h. Accepts remuneration for employment in other capacity (secretary, bookkeeper, veterinarian, groom farrier) **AND** gives instruction, rides, drives, shows in halter/in hand, trains or schools horses, other than horses actually owned or lease by him/her, when his/her employer or member of the family of said employer or a corporation which a member of his/her family controls, owns, boards or trains said horses.

#### **7.5 Trainer**

A trainer is defined as any adult who has the responsibility for the care, training, custody or performance of a horse. The person whose responsibility this is, or his/her representative, must sign the entry blank at each show whether said person be an owner, rider, agent and/or coach as well as trainer. Where a minor exhibitor has no trainer, a parent or guardian must sign and assume responsibility of trainer. The name of the trainer must be designated as such on the entry blank. It shall be the responsibility of Show Management to see that entry blanks contain all of the required information.

- a. Trainers, in the absence of substantial evidence to the contrary, are responsible for a horse's condition and to know all the Rules and regulations of the NWHHA and the penalty provision of said Rules. If any trainer is prevented from performing his/her duties, including responsibility for the condition of the horses in his/her care, by illness or other cause, or is absent from any show where horses in his/her care are to be shown he/she should immediately notify the Horse Show Secretary, and at the same time, a substitute shall be appointed by the trainer, and such substitute shall be equally responsible with the regular trainer for the condition of the horses in his/her care.
- b. The trainer and owner acknowledge that the trainer represents the owner regarding horses being trained or managed, entries, scratches for any reason, and any act performed on any horse under the care and custody of the trainer.

### 7.5.1 Relative of a Professional

- a. Any member of a Professional's family who has reached his/her 18th birthday is not an Amateur if he/she aids or assists in the activities which make the aforesaid a professional.
- b. Any member of a Trainer's immediate family who has reached his/her 18th birthday shall not be considered an Amateur if he/she shows a customer's horse.
- c. Performing clerical work only or providing financial aid only is not deemed "aiding or assisting."

### 7.5.2 Changing from Professional to Amateur Status

A person must be inactive as a Professional for the same period of time he/she was a Professional for up to three years maximum. The Professional must notify the NWHHA office in writing regarding his/her intent to change from Professional to Amateur status. NWHHA's dated and written acknowledgement of said notice shall determine start date of required inactivity as a Professional.

## 8 ATTIRE & EQUIPMENT

### 8.1 General

English tack and attire are mandatory in all classes except those which specifically require or permit otherwise. Youth, ages 11 and under are required to wear ASTM/SEI approved headgear. Safety helmets are allowed in all divisions and judges will not penalize riders for wearing them. Exhibitor's hair should be neat and styled so the back number can be seen easily. Horse and/or stable advertising is not allowed in the ring on exhibitors or attendants. The use of electronic communication devices is prohibited in all classes.

### 8.2 Attire

- a. Correct English attire for walking horse presentations consists of:

- English Riding Habit
- Polished Shoes or Boots.
- Pants tie downs, or underpasses.

Optional English attire may include:

- English Spurs.
- Gloves.
- Snap brim hat or derby is optional for lady riders in English attire.
- Hats are suggested for gentleman riders.
- Top hat should only be worn with formal habit in championship classes.

- b. Correct Western attire for walking horse presentations consists of:

- Western style long pants.
- Western style long sleeve, collared shirt.
- Western hat.
- Western boots.

Optional western attire may include:

- Western spurs.
- Gloves.
- Chaps.
- Coat, vest, and/or jacket.
- Western tie, bolo or scarf.

- c. Halter division Exhibitors must wear conservative attire to include, at a minimum, a collared shirt and tie.

- d. English or Western tack/attire, but not a combination of both, are permitted in the following events unless show management specifies otherwise:

- |                         |                  |
|-------------------------|------------------|
| • Model                 | • Trail Obstacle |
| • Showmanship at Halter | • Water Glass    |
- e. Western tack/attire is required in the following events:
- |                 |                    |
|-----------------|--------------------|
| • Barrel Racing | • Western Pleasure |
| • Basic Reining | • Western Riding   |
| • Pole Bending  |                    |

### 8.3 Tack & Equipment

#### 8.3.1 Saddles

- English saddles are standard equipment, unless specific class requirements indicate otherwise.
- Side saddles are permitted in rail and versatility classes.
- Any Western saddle with a horn is to be used in classes which permit Western tack. Silver tack may be used but shall not be given preference over good working equipment.

***Prohibited:***

- Australian stock saddles may not be used in any event.
- EXCEPTION:*** disabled riders and open breed classes.
- Dressage saddles are prohibited in Walking Seat Equitation.

#### 8.3.2 Bridle & Bits

Any standard English or Western, single rein bridle may be used. Severe bits are discouraged and bleeding of the mouth or muzzle will be penalized in the final judging. Judges may excuse entries wearing equipment he/she considers too severe.

##### 8.3.2.1 Bit Definitions

1. Snaffle - A direct rein bit with a center jointed mouthpiece with a gradual decrease to the center. The rings may not exceed 4 inches outside diameter of either the loose O-ring, egg-butt, Dee or center mounted types. The inside circumference of the ring must be free of any rein, curb or headstall attachment hooks. Cheek pieces or headstall and reins must attach to the same ring of the snaffle bit. The mouthpiece may be two or three pieces; the three-piece, connecting ring, or a connecting flat bar, must lie flat in the horse's mouth.
2. Curb - Any bit that has a solid or broken mouthpiece, has shanks and acts with leverage. All curb bits must be free of mechanical devices. Must be used with a curb strap or curb chain properly attached so as to make contact with horse's chin.

### 8.4 General

- a. **REQUIRED:** Snaffle, Kimberwick or Pelham bit for Jumping classes. See Illustration #2.
- b. **Prohibited:**
- Shanks in excess of 9 ½ inches in length. Shanks are measured from the very top of the metal to the very bottom of the metal, including the rings to which the cheeks and reins are attached. See Illustration #1
  - Gag bits without shanks
  - Cross chain cavessons
  - Hackamores are prohibited in all classes **EXCEPT** Barrel Racing or Pole Bending.

## ENGLISH

1. Snaffle or curb bits are permitted on all English horses.
2. The curb chain or curb strap in English classes must use curb hooks and they must lie flat against the jaw. A plain all leather curb strap may also be used in place of a curb chain and curb hooks. They must be at least ½ inch wide and they must be used on a curb bit. See Illustration #4

## WESTERN

1. **Prohibited:** Western Pleasure classes – cavessons or colored brow bands.
  - a. **Exception:** *Cavessons can be worn in All Day Pleasure, Country Pleasure and Spotted Saddle Horse designated classes.*
2. All horses six years old and older must be ridden in a curb bit one handed in all western events unless stated otherwise.
  - a. **EXCEPTION:** A snaffle or curb bit may be used no matter the age of the horse and may be ridden two handed in All Day Pleasure and Country Pleasure Divisions Western rail classes.
3. A Bosal or snaffle may be used on five year old or younger Western horses. When using a Bosal or snaffle on a five year old or younger horse, the rider must use two hands on the reins. This rule applies to all five year old or younger Western horses in all events while using a Bosal or snaffle unless stated otherwise.
  - a. An optional loose chinstrap of leather or nylon only is permitted and reins should be attached above the chinstrap. Curb chains are not permitted on snaffle bits in such a manner that would create leverage.
4. A bosal may be used in Pole Bending, Barrel Racing, and Trail Obstacle and on junior horses in Reining and Western Riding Classes.
5. The curb chain or curb straps in Western classes would include any with tooled, non-tooled or worked leather and/or silver, tassels, or a combination curb chain with plain buckle leather ends and they must be used on a curb bit. A standard curb chain with curb hooks is allowed in western classes.
6. Reins
  - a. Split reins - a hand around the reins or index finger between reins is permitted, but the free hand is not allowed to touch the reins.
  - b. Romal reins - an extension of braided material attached to closed reins. This extension is allowed to be carried in the free hand with approximately 16 inches of spacing between the reining hand and the free hand holding the Romal. The Romal shall not be used forward of the cinch or used to signal or cue the horse in any way. When using the Romal, a hand should be around the reins, but a finger between the reins is not permitted.

## 8.5 Equipment

- a. Braids are appropriate and required in all Under Saddle Rail classes where English tack and attire are used as well as in Model and In-Hand classes.
  - Braids are optional in All Day Pleasure classes.
  - Braids are prohibited in western events.
- b. Artificial hair extensions of a natural hair color to include forelock, mane and tail are allowed.
- c. Whips:
  - Lashes, plastic bags, appendages or any other appliances of any kind attached to a whip are prohibited.



- One whip per exhibitor no longer than four feet, including the snapper, may be used in rail, halter or model classes.
- For Driving Classes, refer to the Versatility Rule Book section of Driving for whip regulations.
- Whips are **prohibited** for entries shown in:
  - Western tack/attire
  - Water Glass
  - Basic Reining
  - Trail Obstacle
  - Racking Horse Divisions
    - Trail Pleasure
    - Pleasure
    - Country Pleasure

d. Artificial Appliances

While in the show ring, artificial appliances of any kind, including but not limited to leg wraps and devices to anchor a horse's tail to a fixed point are prohibited on all horses with the following exceptions:

1. Permitted in Basic Reining, Western Riding:
  - Skid boots, splint boots and polo wraps.
2. Permitted in Barrel Racing, and Pole Bending:
  - Martingales, tie downs, skid boots, splint boots and polo wraps.
3. Permitted in Jumping classes:
  - Martingales, non-weighted rubber bell boots, splint boots and polo wraps.
4. Permitted in Speed Racking classes:
  - Un-weighted heel boots, quarter boots and bell boots.

## 9 SHOEING

### 9.1 Shoes

Shoes **only** permitted on horse. No shoe can be made from any material heavier than conventional carbon steel. Therapeutic shoes (heart bar, egg bar, natural balance or otherwise) and/or pads of any kind are **prohibited**, therapeutic or otherwise. No devices or enhancements of any kind may be added.

1. Heel/Toe Measurement
  - a. Toe length must exceed the height of the heel by 1 inch or more. The length of the toe, exclusive of the shoe, shall not exceed 5 inches measured from the coronet band, at the center of the front pastern along the front of the hoof wall to the ground, excluding the shoe. The heel shall be measured at a 90 degree angle from the coronet band, at the most lateral portion of the rear of the pastern, to the ground excluding the shoe and shoe caulks.
2. Acrylic may be used to build a toe that has been broken on one foot only.
3. Weanlings may not be shod under any circumstances.
4. Yearlings may be shod, shoes shall not exceed  $\frac{3}{4}$  inch wide nor  $\frac{3}{8}$  inch thick.

The following equipment is **prohibited** on show grounds:

- Appliances attached to a horse's hoof, including but not limited to: hoof bands, pads, heel springs, therapeutic hoof plates, etc.
- Action devices on the pastern areas such as chains, rollers, etc.
- Plastic wrap used for the purpose of creating occlusive leg wraps.

#### 9.1.1 PLANTATION SHOE

**Divisions: Plantation Pleasure and Country Pleasure Racking**

The plantation shoe must not exceed 3 pounds, 8 ounces. The plantation shoe must not exceed

1 ½ inches in width nor ½ inch in thickness with no bare plate or other weight inside the shoe. The caulk must not exceed a 1 inch turnback and the shoe must not extend more than ¼ inch beyond the hoof at the toe. The heel of the shoe must not extend beyond the bulb of the horse's heel when a perpendicular line is drawn from the bulb of the horse's heel to the ground.

1. The use of borium is permitted on the caulks of the plantation shoe, but the thickness of the shoe and caulk with the borium must not exceed 1 1/8 inches. Welded on clips are not permitted on flat shod horses. Clips that are drawn from the shoe itself are permitted. No additional weight shall be allowed on or in the hoof, other than the shoe and nails.

#### **9.1.2 PARK LITE SHOD SHOE**

##### **Divisions: Park Lite Shod, Plantation Pleasure, and Pleasure Racking**

The Park Lite shoe must not exceed 1 inch in width or ½ inch in thickness with the exception of the caulk, which must be no thicker than ¾ inch. The turnback shall not exceed one inch, and the shoe must not extend more than ¼ inch beyond the hoof at the toe. The shoe is not to extend beyond the bulb of the horse's heel when a perpendicular line is drawn from the bulb of the horse's heel to the ground.

1. The use of borium is permitted on the caulks of the Park Lite Shod shoes, but the thickness of the shoe and caulk with the borium must not exceed 1 1/8 inches. Welded on clips are not permitted on flat-shod horses. Clips that are drawn from the shoe itself are permitted. No additional weight shall be allowed on or in the hoof, other than the shoe and nails.

#### **9.1.3 LITE SHOD SHOE**

##### **Divisions: Lite Shod, Trail Pleasure, All Day Pleasure and Trail Pleasure Racking**

The Lite Shod shoe must not exceed ¾ inch in width or 3/8 inch in thickness with the exception of the caulk, which must be no thicker than ¾ inch. The turnback shall not exceed one inch, and the shoe must not extend more than ¼ inch beyond the hoof at the toe. The shoe is not to extend beyond the bulb of the horse's heel when a perpendicular line is drawn from the bulb of the horse's heel to the ground.

1. The use of borium is permitted on the caulks of the Lite Shod shoes, but the thickness of the shoe and caulk with the borium must not exceed 7/8 inch. Welded on clips are not permitted on flat-shod horses. Clips that are drawn from the shoe itself are permitted. No additional weight shall be allowed on or in the hoof, other than the shoe and nails.
2. The Lite Shod shoe must not exceed 1 pound 8 ounces in weight.

#### **9.1.4 KEG SHOE**

##### **Divisions: Country Pleasure**

The keg shoe must be a factory-made non draft breed, stamped shoe (poured or cast) hot- or cold-rolled steel or aluminum shoe. Only flat or heeled keg shoe options are allowed. Keg shoes manufactured with grabs or weighted toes are prohibited. Only clips drawn from the shoe itself are permitted. No additional material can be added or removed from the keg shoe.

The keg shoe shall not extend past the toe. The shoe is not to extend beyond the bulb of the horse's heel when a perpendicular line is drawn from the bulb of the horse's heel to the ground.

1. Poured or cast clips are permitted if poured in the original cast (may not be welded on). Poured or cast heels (caulks) are permitted if poured in the original cast (may not be welded on). Keg shoes shall be allowed in all divisions.
2. The use of borium is permitted on the heel of the shoe. One dot no greater than 1/8" wide on each heel is permitted.

## 10 JUDGES

### 10.1 GENERAL

Designation as a NWHHA licensed Judge is a privilege, not a right, bestowed by the NWHHA according to procedures formulated by it, to individuals, whose equine expertise and personal character merit the honor. To be eligible for approval as a licensed NWHHA Judge a person must meet all requirements as set forth in the Standard Operating Procedure for Judges. In determining the qualifications of an applicant for approval as an NWHHA Judge, the information to be considered by the NWHHA shall include all information presented to the NWHHA by the applicant, and such information as the NWHHA may otherwise obtain. Except as otherwise herein and after provided in these Rules, no person shall judge at a NWHHA show unless he/she holds a valid license. An individual's conduct and ability as a Judge must be exemplary; is subject to continual review; and such designation is revocable by the NWHHA with or without notice and formal hearing.

#### 10.1.1 Classification of Judges

1. Licensed Judge: A NWHHA licensed Judge may judge in all divisions at all NWHHA affiliated horse shows.
2. Apprentice Judge: An Apprentice Judge is someone who has not judged a minimum of four (4) horse shows.
  - a. An Apprentice Judge must apprentice a minimum of four (4) NWHHA-affiliated horse shows before being considered for approval as a licensed NWHHA Judge.
3. Guest Judge: An individual 25 years of age or over, to whom the NWHHA may grant permission to officiate upon the request of a particular show and for that show only.
  - a. A non-refundable fee of \$100.00 shall be required for a Guest Judge.

**Exception:** If the Apprentice holds a Judge's card/license with another walking horse association, he/she may be considered for approval as a licensed NWHHA Judge after apprenticing a minimum of two (2) NWHHA-affiliated horse shows.

#### 10.1.2 Licensure Requirements

All Judges will be tested and are required to attend training clinics at least every other year and maintain an active NWHHA membership in good standing while licensed.

1. All Judges/Apprentices are required to obtain a NWHHA-issued License:
  - Regular License-\$75.00 annually.
  - Apprentice License-\$50.00 valid for three (3) years.
2. No one will be considered for NWHHA Judge licensure that has been convicted of a crime regarding moral turpitude.
3. All Judges must sign a statement agreeing to accept all disciplinary actions by the NWHHA or its representatives.
4. Judges will be approved by the NWHHA Judges Committee and the Board of Directors.

#### 10.1.3 Responsibilities of a Judge

1. A Judge shall adjudicate each class in conformity with the Rules and specifications of that class as they appear in the NWHHA Rule Book. He/she must be proficient and possess a thorough knowledge of the Rules of the NWHHA.
2. No one, nor their immediate family or employee, nor horses owned by this person shall show before a NWHHA Approved Judge that had any business dealings with that judge in the past ninety days. **Exception:** stud fees.

3. Once a class has been judged, it shall not be re-judged, and once the Judge has marked his/her records for awards made, there shall be no changing of the Judge's record. **Exception:** entry that fails post show inspection.
4. Failure of a Judge to attend a show to which he/she is committed shall constitute cause for disciplinary action except in cases of extreme emergency.
5. A Judge assumes responsibility to protect Show Management by excusing from the ring all horses suspected of being in violation of the HPA or NWHHA Rules.
6. When officiating at a show, a Judge must not arrive on show grounds until 30 minutes prior to show time.
7. A Judge shall not inspect or discuss any horse entered in the show prior to the start of the show or during show unless so requested by Show Management. Show Management must be present during any discussions with the Judge.
8. No Judge selected to officiate at a show shall be contacted relative to any show by any person attempting to influence his/her opinion in determining how a horse will be placed in said show. All contacts made in violation hereof shall be reported immediately to the NWHHA by said Judge.
9. Communicating with a Judge(s) at a NWHHA affiliated show by an exhibitor is a violation of NWHHA rules. **Exception:** Section 10.1.4, Item 2.
10. All NWHHA licensed Judges must conduct themselves in a manner which reflects credit upon the NWHHA, the horse show, and the Walking Horse.
11. An entry may, at the discretion of the Judge, be excused from the ring for any infraction of the NWHHA Rules or for deviating from the true gaits of the Walking Horse. The entry shall be eligible to show in a succeeding qualifying class if the problem can be corrected.
  - a. An entry must be excused for bad image. See Section 10.3.9.

#### **10.1.4 Regulations Governing Judges**

1. A Judge shall not, during the period of a show at which he/she is judging, be the house guest of a person who is exhibiting in the show, or whose family is exhibiting at such show.
2. An Exhibitor may make a request through the Show Manager for the Judge's opinion concerning that exhibitor's horse. The request must be made at the conclusion of the show. It is urged that the Judge will give his/her opinion courteously and sincerely in the presence of the Show Manager and in a private setting.
3. An NWHHA licensed Judge shall be treated with courtesy, cooperation and respect. No person, exhibitor, owner or otherwise, shall direct abuse or threatening conduct toward them, either in the furtherance of their judging duties, or as a result thereof, whether or not the conduct occurs during an approved event or show, or on show grounds. The Judge has no discretion and must report the violation.

#### **10.1.5 Disciplinary Actions**

After a Judge has been approved by the NWHHA, and such Judge should demonstrate lack of competence, skill, integrity, cooperation, or the desire to deport him/herself in a manner as to be worthy of a Judge, that Judge's name may be removed from the NWHHA licensed Judges List by the NWHHA or its representatives.

### **10.2 Judging Systems**

#### **10.2.1 Majority Opinion Three-Judge System**

Under the Majority Opinion System (M-O-S), all three Judges carry equal weight in the final class decision, and winners are placed by the best two out of three votes. Each horse is judged as if it were working individually and then compared with the performance of all other horses in the class

who are judged on the same basis. All Judges place the same number of entries in each class, depending on class size. Ties are resolved by averaging the opinions of the three Judges.

- a. **Judging:** Judges must work independently, with no discussion of any kind until the winners are announced. They should vary their judging positions and rotate around the ring. They should discuss and plan how to cover the ring and work classes before the show to avoid “cluster” judging. A suggestion would be to section the ring into three areas which will give each Judge a separate but equal view of the rail with rotation of positions for each class.
- b. **Rotation:** Show Management shall mark the Judges’ cards ahead of time with the rotation and indicate who will be Call Judge for each class. No referee is required since all ties are broken by a two-thirds majority vote.
- c. **Placings:** Mark the Judge’s cards ahead of time indicating how many entries should be placed. Three additional ties are recommended for each class. (Tie 11 horses in a class in which 8 horses receive awards. The Ringmaster should return an incompletely tied card to the Judge for correction before giving it to the Scorer(s).
- d. **Identical Tie for First Place:** When three numbers are circled on the same line and their vote counts are identical, it is an extremely rare three-way identical tie. When a three-way identical tie occurs for first place, a workout is optional. If the Judge calls for a workout, the three horses involved shall be sent back to the rail. If a workout is not called for the class, the class will be tied by the fall of the cards.
- e. If there has already been a workout, the Judges should be notified and given the option of going with fall of the cards or sending the horses back to the rail for additional work.
- f. If the tie is still identical after the workout, the class is tied by the fall of the cards.
- g. When the identical three-way tie is for second place or lower, the class is determined by fall of the cards.
  - a) A B C
  - b) 101 102 103 (1-2-3)
  - c) 102 103 101 (1-2-3)
  - d) 103 101 102 (1-2-3)
1. The number that is positioned first (not the circled line) on the Call Judge’s card will be first (101). The second (102) and third (103) places are then determined by the Judges’ choices as their cards are placed in sequence.
2. In the example shown, if B was the Call Judge, then 102 would be first, C’s choice of 103 would be second and A’s choice of 101 would be third. If C were the Call Judge, then 103 would be first 101 would be second and 102 third.
- h. **Workouts**
  - Any Judge may request a workout in any class by communicating through the Ringmaster. The Judge making the request must state the numbers of those horses he wants called to the workout and for how many places they are to be worked. The Ringmaster relates this to the other Judges one at a time. A workout requires agreement by two of the three, or the positions must be filled without a workout.
  - If a workout is agreed upon, the Ringmaster must ask the other Judges if they wish to add other horses to those being sent to the rail. The Ringmaster must be sure that all Judges know what horses are working to fill the places.
  - To be included in a preliminary class workout, an entry must appear on two Judges’ cards. An entry that does not receive two votes returns to the rail and may then be parked in by one Judge. In a championship class, a horse that appears on only one Judge’s card must be included in the workout.
  - The Ringmaster must inform the Announcer of the workout request. Whenever horses are being called for a workout, the Announcer must call for them in numerical order.

### 10.2.2 High-Low Olympic Judging System

Five judges working independently of each other will place each class. Judge number one will be the Call Judge. Points will be assigned to the placings on a one to ten basis with first place receiving ten points, second place receiving nine points, third placing receiving eight points, and so forth on down to one point for tenth place. The highest placing and the lowest placing are eliminated for each entry. The remaining three placings are totaled and the entry receiving the most points wins the class. In case of a tie, then all five placings are added. If still tied, then the first or Call Judge's card will break the tie. If a horse receives four or less placings the top score is eliminated.

## 10.3 Judging Procedures & Criteria

When judging or exhibiting Walking Horses, it is important to remember that this breed's original purpose was to be a working Plantation Saddle Horse. Sometimes referred to as the Plantation Nodding Walk Saddle Horse, it was bred to carry its rider comfortably, for long hours, through the flatlands of the plantation crop rows. Horses in the Trail Pleasure Walking Horse division should be closest in style and movement to that original, working saddle horse. In the 1960's influential breed sires, and the industry's desire to have a flashier, more animated horse were instrumental in creating the "Park" style Walking Horse. This Horse exudes a brilliant attitude. The Lite Shod and Plantation Walking Horse divisions were created for this flashier horse.

### 10.3.1 General Judging Procedures

Horses shall be worked both ways of the ring at all required gaits sufficiently for all horses to have performed before each officiating Judge. Horses must perform all required gaits both ways of the ring. A horse that has not performed all required gaits shall not be placed over a horse that has performed all gaits. All horses in Under Saddle Rail Classes shall enter the ring and go to the right (first way, tracking left or counterclockwise), after which the Judge shall call for gaits as described below:

*In Walking Horse rail classes, a second running walk may be called for the last way of the ring as the last gait at the Judge's discretion.*

### SEQUENCE OF GAIT CALLS

#### ALL DAY PLEASURE

A halt MUST be called for by the Judge at some time during the class.

**Two Gait:** Enter at the Pleasure Gait. Pleasure Gait, Trail Walk, reverse and repeat. Line up at the Pleasure Gait.

**Three Gait:** Enter at the Pleasure Gait. Pleasure Gait, Trail Walk, Canter, Trail Walk, reverse, Pleasure Gait, Trail Walk, Canter, and Trail Walk. Judge may ask to enter the line up at the Pleasure Gait.

#### COUNTRY PLEASURE

Riders may be asked to approach the lineup at a Flat Walk and a halt may be called for at any time during the class at the discretion of the Judge.

**Two Gait:** Enter the ring at a Flat Walk. Flat Walk, Running Walk, Trail Walk, reverse, repeat, and line up.

**Three Gait:** Enter at the Flat Walk. Flat Walk, Running Walk, Flat Walk, Canter, Trail Walk, reverse and repeat.

#### TRAIL PLEASURE, LITE SHOD PARK LITE SHOD or PLANTATION PLEASURE

**Two Gait:** Enter at Flat Walk. Flat Walk, Running Walk, Flat Walk and Reverse. Repeat the sequence. Line up. Back up at Judge's direction.

**Three Gait:** Enter at Flat Walk. Flat Walk, Running Walk, Flat Walk, Canter, Flat Walk and Reverse. Repeat the sequence. Line up. Back up at Judge's direction.

#### **TRAIL PLEASURE with TRAIL WALK**

**Two Gait:** Enter at Flat Walk. Flat Walk, Running Walk, Flat Walk, Trail Walk and Reverse. Repeat the sequence. Line up. Back up at Judge's direction.

**Three Gait:** Enter at Flat Walk. Flat Walk, Running Walk, Flat Walk, Canter, Flat Walk, Trail Walk and Reverse. Repeat the sequence. Line up. Back up at Judge's direction.

#### **SPOTTED SADDLE HORSE**

The SSH must always be in gait and never does a Trail Walk.

**Two Gait:** Enter at Show Walk. Show Walk, Show Gait, Show Walk and Reverse. Repeat the sequence. Line up. Back up at Judge's direction.

**Three Gait:** Enter at Show Walk. Show Walk, Show Gait, Show Walk, Canter, Show Walk and Reverse. Repeat the sequence. Line up. Back up at Judge's direction.

#### **RACKING HORSE**

**TRAIL PLEASURE RACKING:** Enter at the Trail Rack. Trail Pleasure Walk, Trail Pleasure Rack, Trail Pleasure Walk and Reverse. Repeat the sequence. Line up. Back up at Judge's direction.

#### **COUNTRY PLEASURE RACKING**

Enter at the Country Pleasure Slow Rack. Country Pleasure Show Walk, Country Pleasure Slow Rack, Country Pleasure Fast Rack, Country Pleasure Show Walk and Reverse. Repeat the sequence. Line up. Back up at Judge's direction.

#### **PLEASURE RACKING**

Enter at the Pleasure Racking Slow Rack. Brisk Walk, Slow Rack, Extended Rack, Slow Rack and Reverse. Repeat sequence. Line up. Back at Judge's direction.

#### **WESTERN PLEASURE RACKING**

Enter at the Western Pleasure Rack. Western Pleasure Walk, Western Pleasure Rack, Western Pleasure Walk and Reverse. Repeat the sequence. Line up. Back up at Judge's direction.

#### **STYLE RACKING**

Style Racking horses are not required to back.

Enter at a Style Rack. Show Walk, Style Rack, Show Walk and Reverse. Repeat the sequence. Line up.

#### **SPEED RACKING**

Speed Racking horses are not required to back. As the horses enter the ring, the Judge must observe their way of going, and if the Judge finds that an entry is a bad image as set forth in the Rules, the entry must be excused immediately. See Section 10.3.9.

Enter at a Slow Rack. Show Walk, Slow Rack, Fast Rack and Reverse. Repeat the sequence. Line up.

### 10.3.2 Reverse

The reverse can be executed by turning either toward or away from the rail when exhibiting a horse in English tack and attire. The reverse must be executed by turning away from the rail when exhibiting a horse in Western tack and attire.

### 10.3.3 Lineup

After the preliminary work-out of a class, all horses shall be lined up and inspected by the Judge. During the lineup a Judge makes the final decision and evaluate any possible Rule violations as whether to excuse a horse or permit it to remain in the class.

### 10.3.4 Time-outs

Time-outs interrupt a show therefore unauthorized time-outs will not be permitted.

- a. A rider desiring a time-out will ride to the center of the ring, remain mounted and request it of the Judge. The Judge will ascertain the reason for the time-out and either grant or deny the request.
- b. Assistance over the rail is not permitted; physical assistance over the rail (touching the horse) is not permitted and horse must be excused.
- c. If the Judge finds the reason for a time-out invalid, the entry must be ordered back to the rail immediately.
- d. Time-outs may be granted by the Judge for replacement of shoes, replacement of broken equipment, or in other instances the Judge deems necessary. In any division, a shoe thrown in the ring must be presented immediately to the DQP for inspection. Only a Judge or Ringmaster may retrieve and handle a thrown shoe. If the DQP identifies a violation is found, the horse is disqualified and a ticket written by the DQP, who should retain the shoe and turn it over to the NWHHA. However, time-outs for adjustments of equipment, such as curb chains or bridles, are not allowed.
- e. A total of ten minutes in aggregate shall be allowed for each entry for authorized time-outs, but no more than two time-outs per class.
- f. All time-outs will begin when justifiable reasons are acknowledged, except for the replacement of shoes, in which event the time-out shall begin the moment the farrier lifts the horse's foot. Time will be allowed prior to the beginning of time-out for locating the thrown shoe.
- g. During time-outs Exhibitors remaining on the rail may be asked to halt or go at ease as directed by the judge.

### 10.3.5 Workouts

All horses chosen for a workout must be worked both ways of the ring at each gait asked for by the Judge. A Judge shall not place any entry in a workout unless the entry has performed all required gaits both ways of the ring in the initial performance unless all entries are put in the workout. Workouts must include sufficient horses to fill the placings, plus at least two additional horses. Horses not qualifying in the elimination workout initially do not have to be worked both ways of the ring before being excused. Final workouts shall be judged as a new and separate class.

### 10.3.6 Falls

- a. A rider is considered to have fallen if the rider is separated from his/her horse (who has not fallen) so that they must remount.
- b. A horse is considered to have fallen when the shoulder and haunch on the same side have touched the ground.
- c. The fall of a horse and/or rider shall not disqualify the entry, unless due to bad manners of the horse or unless the safety of the rider is threatened. **Exception:** In Equitation Classes, the fall of either the horse or the rider disqualifies the entry.



### 10.3.7 Unruly Horse

Horses being unruly, rearing up, balking, running off, or leaving the ring must be excused.

### 10.3.8 Qualifying Gaits

The Walking Horse should move freely in each gait and proceed in a smooth fluid, rhythmic manner. Form is not to be sacrificed for speed. At all gaits, the horse should be flexed at the poll with muzzle slightly tucked. Any tendency to Rack, Pace, Step-Pace, Trot, Foxtrot or otherwise deviate from the true walking gaits is not typical of the breed and shall be penalized in judging. All required gaits should have equal value when being judged. A horse which is the most all-around ideal individual should be the winner rather than a horse which is outstanding in only one gait. Horses shall be judged for their present performance and not on reputation or past performances. Nosing out, over collection, bad manners or excessive speed without form should be properly penalized in any placing. It is important to remember that gait and over-stride are what set the Walking Horse apart from other breeds and the goal is to reward the best gaited horse in the class. Therefore, a horse may not necessarily be discounted based on mistakes made when overall quality of that horse's gaits is exceptional.

1. **HALT:** The halt is a temporary suspension of movement. The horse should transition to the halt in a timely manner with minimal steps and without excessive effort of the rider to achieve or maintain the halt. Horse must stand quietly with no movement in any direction. Reins should be relaxed giving the appearance of a pleasure riding horse that is content and manageable. Hoof placement to adjust balance during the halt shall not be penalized, additional movements shall be considered in judging. Positive credit will be given to horses that display manners and obedience which are paramount during execution of the halt.
2. **BACK:** The back is a rear 2 beat diagonal movement that is balanced and smooth flowing. The horse should back readily and quietly in a straight manner with self-carriage without gapping the mouth on light contact and without hesitation. A poor back is hesitant or resistant and heavy in front, horse may gap the mouth, throw the head, fight the rider while backing, refuse to back and may back crooked and should be considered and penalized in judging.
3. **TRAIL WALK:** The Trail Walk is a true walk with a loose rein and no appearance of strain on the part of the horse or rider. The appearance should be that of a pleasure riding horse that is relaxed, content and manageable.
4. **PLEASURE GAIT:** is to be performed at moderate speed and can be a variation of any saddle horse gait with no preference given to any particular gait over another. The gait should be consistent and balanced and should appear easy and comfortable to ride. Excessive speed is not a desired trait.
5. **FLAT WALK:** The flat walk should be bold and four-cornered with an evenly timed 1-2-3-4 beat. In the flat walk the horse should break at the knees, reaching and pulling with the front legs with that movement originating from the shoulder. The horse should have impulsion and exhibit stride and drive with the hind legs. There should be no wringing or twisting of the hocks, nor any excessive hock action. The horse should demonstrate a loose way of going with plenty of motion. A horse with a good flat walk will naturally have a straight, up and down head motion timed with the overall rhythm of the walk. Within the flat walk lies the foundation for a good running walk and it should be judged equally as important as is the running walk. The flat

walk should be a distinctive FLAT walk, not a slow running walk, with each leg impacting the ground with distinction. The flat walk is more bold or purposeful in movement than the running walk. Form should never be sacrificed for speed. Excessive “bumping or jerking” of the reins at the flat walk is not considered good form and shall be penalized.

6. **RUNNING WALK:** The running walk has the same beat or evenly timed footfall (1-2-3-4) as the flat walk but is much smoother with greater stride, rhythm, and natural motion. The increased rear leg stride and increased reach in the shoulder create this smoother ride and propel the horse at a faster speed without changing the cadence of the leg motion. As with the flat walk, the horse will naturally have a straight up and down vertical head motion timed with the overall rhythm of the running walk. A correctly performed running walk is truly a gait of ease, producing a clearly heard and easily counted 4-beat tempo. It should be straight and loose, 4 cornered and exhibit over-all balance, without any trace or degree of a rack, trot, fox trot, pace or stepping pace. There should be no excessive winging, crossing or rope walking. Horses exhibiting an exaggerated, hesitating way of going, with a tendency to point with the front hooves, are not in form. The horse should reach and pull in the front with powerful shoulder movement and demonstrate obvious impulsion behind, pushing and striding, setting its feet firmly on the ground. When correctly engaged the horse will naturally drop its hip. Speed at the running walk while maintaining correct form is a positive attribute; however, form should NEVER be sacrificed for speed. Consistency of correct gait shall be rewarded. Excessive “bumping or jerking” of the reins at the running walk is not considered good form and shall be penalized.
7. **CANTER:** The canter should be consistent, smooth and straight on both leads, not walking behind, but cantering on both ends with a rolling or rocking chair motion, comfortably collected, neck slightly arched, head slightly tucked, giving the appearance of ease and grace. The horse should be relaxed, performing in rhythm, with head motion in perfect harmony with leg movement. The canter is not too fast, with speed somewhat dependent upon the individual horse’s conformation and size; this shall be considered in judging. While in the canter, the horse should cover some ground; it should not rock up and down and go nowhere. A horse that is on the wrong lead or cross-cantering must be penalized. “Pumping” or bumping of the reins at the canter is not considered good form and shall be penalized.
8. **LOPE:** The lope is a forward 3 beat diagonal movement performed either to the left or right and is performed in Western three gait classes. The lope should be consistent, smooth and straight on both leads, not walking behind, but loping on front and rear with a rolling or rocking chair motion comfortable collected, neck slightly arched, head slightly tucked, giving the appearance of ease and grace. The horse should be relaxed, performing in rhythm, with head motion in perfect harmony with leg movement. It should be neither too slow nor too fast (speed somewhat dependent upon conformation and size) and performed equally well on either lead and shall be considered in judging. A horse on the wrong lead or cross-cantering must be penalized. Pumping or bumping of the reins at the lope is not considered good form and shall be penalized.

#### 10.3.9 Bad Image

Any horse exhibiting a bad image in the show ring, even though it may not be in violation of the HPA, must be excused from the ring by the Judge and it must be denoted on the judge’s card for any rule violation. Bad image includes, but is not limited to:

- stiff front leg
- excessive winging
- crampy rear leg motion
- wobbling

- wringing of hocks
- laboring
- stumbling
- buckling knees
- lack of rhythmic timing
- pointing
- favoring a particular leg
- horse in poor flesh

#### 10.3.10 Presentation

All entries should be presented clean, neatly trimmed, and in good flesh presenting a healthy appearance. Each entry should be outfitted in clean and appropriate tack. The exhibitor of each entry should be neat in appearance, correctly dressed in properly fitting riding attire and shall demonstrate sportsmanlike behavior at all times.

### 10.4 All Day Pleasure Classes

The All Day Pleasure division is open to all gaited breeds and may be ridden English or Western (as determined by the class description), but not a combination of both. Neat attire is required and should include a collared shirt, long pants, and heeled boots. Exhibitors wearing show attire shall not be favored by the judge. If an ADP horse is exhibited in Western tack, the rider may use two hands on the reins, but both hands shall remain on the reins the duration of the class. Braided manes or forelocks are not required. These classes will allow up to a ¾ inch wide by 3/8 inch thick shoe and will be judged as Pleasure classes. All Day Pleasure classes may be Youth, Amateur, Amateur Owned and Trained or Open as determined by show management. Classes are judged on the horse/rider team that exhibits a true, natural, smooth ride that one would want to ride “all day.” Manners, calmness, obedience, and a smooth, consistent gait are paramount in the All Day Pleasure classes. The All Day Pleasure horse must be ridden with a light or relaxed rein contact. The All Day Pleasure class may be a two or three gaited class.

*As long as shoeing requirements are met, All Day Pleasure horses are allowed to cross-enter into Country Pleasure as permitted by show management, however may not cross-enter into Trail Pleasure, Lite Shod, Park Lite Shod or Plantation Pleasure classes at the same show. (Exception: Spotted Saddle horse classes, Racking horse classes and all Versatility classes).*

#### 10.4.1 Required Gaits of All Day Pleasure Classes

**Trail Walk:** is a true walk with a loose rein and no appearance of strain on the part of the horse or rider. The appearance should be that of a pleasure riding horse that is relaxed, content, and manageable.

**Pleasure Gait:** is to be performed at moderate speed and can be a variation of any saddle horse gait with no preference given to any particular gait over another. The gait should be consistent and balanced and should appear easy and comfortable to ride. Excessive speed is not a desired trait. Manners are paramount in this division. Horses should stand quietly and back readily. Positive credit will be given to horses that display such qualities as responsiveness, steadiness, manners, and traveling on a loose rein.

**Canter/Lope:** is on a light rein and of medium to slow speed. Pumping of the reins or anything appearing rushed or out of control shall be severely penalized.

### 10.5 Country Pleasure Classes

The Country Pleasure horse should display true pleasure qualities, along with the natural gaits of the Tennessee Walking Horse; a Country Pleasure horse should never tend to Rack, Pace or Trot. Front

leg animation (lift) is not desirable and headshake is not required to be as deep as that of the other Walking horse divisions. The Country Pleasure horse should exhibit a balanced, smooth, four-cornered, gliding flat walk and the running walk. The canter should be relaxed and consistent with no sign of effort from the exhibitor. Manners are paramount in this division. The Country Pleasure horse must be ridden with a light or relaxed rein contact. The Country Pleasure horse should stand quietly in the lineup.

The Country Pleasure horse may be ridden English or Western (as determined by the class description), but not a combination of both. Riders may use two hands with English or Western, but must then maintain 2 hand rein hold throughout duration of class. Cavessons are allowed in English classes only. Country Pleasure classes may be offered as either two or three gaited class. The Country Pleasure division may be Youth, Amateur, Amateur Owned and Trained or Open (as determined by Show Management).

***The Country Pleasure horse may cross-enter into All Day Pleasure classes as permitted by show management, but not cross-enter into Trail Pleasure, Lite Shod, Park Lite Shod or Plantation Pleasure classes at the same show. (Exception: Spotted Saddle horse classes and all Versatility classes).***

## **10.6 Trail Pleasure Classes**

The Trail Pleasure horse must perform the true walking gaits efficiently and with effortlessness geared toward encouraging stamina and longevity as a pleasant, working saddle horse. The flat walk and running walk should be performed as described in Section 10.3.8 (5, 6). The horse should exhibit a true, four beat walking gait with pronounced and cadenced head nod. The horse should be well balanced, in that not one element of the horse should stand out from all other qualities when considering gait, form, rhythm or conformation. A horse exhibiting a crampy or gimmicky way of going must be excused. Animation and action are not desired in a Trail Pleasure horse. The front legs should not break higher than 45 degrees from the vertical. The ideal Trail Pleasure horse will reach out in front and pull with its shoulders. The front legs can move close to the ground as long as the power is coming from a loose shoulder and the horse has head shake and is square and on four corners. The Trail Pleasure horse should be on the bit and not strung out in frame. It should carry its head in a natural and relaxed position. The horse must be extremely well mannered, responsive and quiet. The horse must be manageable on a light rein at all gaits. The horse must stand quietly and back readily on command. Trail Pleasure horses may be asked for a halt at any time during the class to demonstrate manners and a willing attitude. The Trail Pleasure horse's canter/lope should be relaxed and consistent with no sign of effort from the rider. Additionally, if specified on the class list, Trail Pleasure horses will be asked to do a Trail Walk as the last gait called for both ways of the ring. The Trail Walk is a true walk with a loose rein and no appearance of strain on the part of the horse or rider. The appearance should be that of a pleasure riding horse that is relaxed, content, and manageable.

The Trail Pleasure class may be a two or three gaited class. Trail Pleasure classes may be Youth, Amateur, Amateur Owned and Trained or Open (as determined by show management). The Trail Pleasure horse may be ridden English or Western, (as determined by the class description), but not a combination of both.

***Trail Pleasure horses are not allowed to cross-enter into All Day Pleasure, Country Pleasure, Lite Shod, Park Lite Shod nor Plantation Pleasure classes at the same show. (Exception: Spotted Saddle horse classes and all Versatility classes).***

## 10.7 Lite Shod Pleasure Classes

The Lite Shod Pleasure horse should display brilliance and show presence while performing true walking gaits. The horse should be collected and well balanced, in that not one element of the horse should stand out from all other qualities when considering gait form, rhythm or conformation. Compared to the Trail Pleasure horse, the ideal Lite Shod Pleasure horse should have a higher head carriage and exert more energy through collection while maintaining its walking ability and overall presence. The flat walk and running walk should be performed as described in Section 10.3.8 (5, 6). The Lite Shod Pleasure horse should break higher with its front legs than a Trail Pleasure horse in all gaits and should not be penalized for this unless it appears unnatural to the horse or out of balance with all other elements of the horse. Form is not to be sacrificed for speed. Manners are paramount for a pleasure horse and should be given serious consideration in judging. The horse should have an alert and willing attitude, be manageable with light to medium rein contact, and must back readily. Any evidence of being behind the bit should be penalized.

The Lite Shod Pleasure class may be a two or three gaited class. Lite Shod Pleasure classes may be Youth, Amateur, Amateur Owned and Trained or Open as determined by show management. The Lite Shod Pleasure horse may be ridden English or Western as determined by the class, but not a combination of both.

*As long as shoeing requirements are met, Lite shod Pleasure horses are allowed to cross-enter into Park Lite Shod and Plantation Pleasure, however are not allowed to cross enter into Trail Pleasure, Country Pleasure nor All Day Pleasure divisions at the same show. (Exception: Spotted Saddle horse classes and all Versatility classes).*

## 10.8 Park Lite Shod Classes

The Park Lite Shod horse should perform the true walking gaits and in the same manner as described for the Lite Shod Horse. The major difference between a Park Lite Shod horse and a Lite Shod horse is the larger shoe allowed in the Park Lite Shod which may produce a more animated, flashy, and powerful-appearing gait. The Park Lite Shod horse should still perform its gaits effortlessly without the appearance of laboring.

The Park Lite Shod class may be a two or three gaited class. Park Lite Shod classes may be Youth, Amateur, Amateur Owned and Trained or Open as determined by Show Management. The Park Lite Shod horse may be ridden English or Western (as determined by the class), but not a combination of both.

*As long as shoeing requirements are met, Park Lite Shod horses are allowed to cross-enter into Lite Shod and Plantation Pleasure, however are not allowed to cross-enter into Trail Pleasure, Country Pleasure or All Day Pleasure classes at the same show. (Exception: Spotted Saddle horse classes and all Versatility classes).*

## 10.9 Plantation Pleasure Classes

The Plantation Pleasure horse should perform the true walking gaits and in the same manner as described above for the Lite Shod pleasure horse and the Park Lite Shod pleasure horse. The major difference between a Plantation Pleasure horse and the Park Lite Shod pleasure horse and Lite Shod pleasure horse is the larger shoe allowed in the Plantation Pleasure division, which may produce a more animated and powerful-appearing gait than all other divisions. The Plantation Pleasure horse should still perform its gaits effortlessly without the appearance of laboring.

The Plantation Pleasure class may be a two or three gaited class. Plantation Pleasure classes may be Youth, Amateur, Amateur Owned and Trained or Open as determined by Show Management. The

Plantation Pleasure horse may be ridden English or Western (as determined by the class), but not a combination of both.

***Plantation Pleasure horses are not allowed to cross-enter into All Day Pleasure, Country Pleasure, Trail Pleasure, Lite Shod or Park Lite Shod divisions at the same show. (Exception: Spotted Saddle horse classes and all Versatility classes).***

### **10.10 Western Pleasure Classes**

Entry shall reflect suitability of the Walking Horse as a western working horse, exhibiting qualities suitable for ranch work. The western pleasure horse works quietly, exhibiting an exceptionally smooth, comfortable ride without excessive action or animation. A good western pleasure horse should have a balanced flowing motion with a free and easy gait. The horse should be ridden on a loose rein, and should exhibit a true, four beat walking gait with a cadenced head motion (nod). The head set should be natural, neither excessively nosed out or over flexed at the poll. The head should not be high but should exhibit the type of head carriage of a Walking Horse used as a western working horse.

- Horses in western pleasure are to be reversed away from the rail (to the inside.)
  - When riding with a curb bit using split reins, they must be held in one hand and cannot be changed during performance.
  - When riding with a curb bit using romal reins, the rein hand and free hand cannot be changed during the performance. If a western horse is two handed at any time, he must be severely penalized.
- Exception:**
- When using a bosal or snaffle on a five year old or younger horse, the rider must use two hands on the reins.
  - All Day Pleasure and Country Pleasure Western classes may use two hands regardless of bit, curb or snaffle.
  - While the horse is in motion, the Rider's hands shall be clear of horse and saddle at all times.
  - The Judge may call for a halt on the rail to test for quietness. Horse must stand quietly on the rail and in the lineup, and back freely when asked. Horse should back with head in normal position and mouth closed. If a Western horse does not stand quietly, he must be penalized.
  - It is recommended the judge ask the entries to back clear of the line-up and do a 360 degree neck or direct reined turn, either right or the left, rider's discretion.
    - A 360 degree neck or direct reined turn is required in all Western championship classes. Execution of an ideal turn would be performed on the haunches, the horse should pivot on the inside hind leg and step across with the front legs. Turns should be smooth and continuous turning in either direction. Deep flexion of the hocks and speed of the turn is not to be valued over accuracy and smoothness of the pivot.
  - If a Western horse has a fast, uncontrollable lope or requires pumping or bumping, he must be penalized.

### **10.11 Spotted Saddle Horse**

Spotted Saddles Horses may be shown in either Western or English tack and attire, but not a combination of both.

#### **a. Definition of Gaits:**

1. **Show Walk:** The Show Walk should be a smooth, intermediate saddle gait. It can be a Flat walk, Slow Rack, etc.

2. **Show Gait:** The Show Gait should have an increase in speed from the Show Walk. Examples of a Show Gait are a Running Walk, Fast Rack.
- b. **Gait Calls:** Exhibitors enter at a Show Walk. The judge will ask for the Show Walk, Show Gait, and Canter/Lope (if required) in both directions of the arena.
- c. **Western Classes:** A 360 degree neck reined turn, either right or left, (Rider's discretion) is required in all Championship Western Classes. Exhibitors may also be asked to perform this maneuver in qualifying classes. Execution of an ideal turn would be performed on the haunches, the horse should pivot on the inside hind leg and step across with the front legs. Turns should be smooth and continuous turning in either direction. Deep flexion of the hocks and speed of the turn is not to be valued over accuracy and smoothness of the pivot.
- d. Whips are prohibited in western classes. Horse must reverse away from the rail. Refer to the NWHHA Rule book, Section 8 for descriptions of tack and attire. The horse must wear a bridle with no colored brow band, the use of cavessons is permitted in SSH Western classes. Braids are prohibited.

#### **10.11.1 Divisions and Shoeing**

Refer to NWHHA Rule book, Section 9 for shoe requirements.

#### **10.11.2 Trail Pleasure Division**

The Trail Pleasure horse should be under control and have a natural headset. Horses may be asked to halt at least one time each way of the ring at the Judge's discretion. The horse should stop and stand quietly on a relaxed rein until asked to continue. The horse must demonstrate perfect manners and an exceptionally smooth, natural gait. The Trail Pleasure horse must give the impression of the ultimate trail horse at all times during the class. Exhibitors may use two hands in Western classes but must then maintain the same rein hold throughout the performance with the horse performing on a relaxed rein. Romal reins mean an extension of braided material attached to closed reins. This extension should be carried in the free hand with approximately 16 inches of spacing between the reining hand and the free hand holding the Romal. The Romal shall not be used forward of the cinch or used to signal or cue the horse in any way. When using the Romal, the hand should be around the reins; a finger between the reins is not permitted. A Trail Pleasure Western horse, five years old and under must be reined using two hands if a bosal or ring snaffle is used. The Trail Pleasure horse must stand quietly and back readily in the lineup or be penalized in the final judging.

- a. The trail pleasure shoe must not exceed that of a lite shod shoe. The turnback shall not exceed 1 inch, and the shoe must not extend more than  $\frac{1}{4}$  inch beyond the hoof at the toe. The shoe is not to extend beyond the bulb of the horse's heel when a perpendicular line is drawn from the bulb of the horse's heel to the ground.

#### **10.11.3 Lite-Shod Division**

The Lite Shod horse should have a headset natural to the horse's conformation but should have a bit more show presence than the trail pleasure horse. If shown in Western Tack the exhibitor may use two hands to rein; however, if one hand is used the same rules apply as the trail pleasure division. The Lite Shod horse must stand quietly and back readily.

- a. The Lite Shod shoe must not exceed that of a Park Lite Shod Shoe. Refer to NWHHA Rule book section 9 for shoe requirements.

#### **10.11.4 Open Shod Division**

The Open Shod horse should display brilliance and show presence. If shown in Western Tack the exhibitor may use two hands to rein; however, if one hand is used the same rules apply as the trail pleasure division. The Open Shod horse must back readily.

- a. The Open Shod Shoe shall not exceed the size of the plantation shoe. The caulk must not exceed a 1 inch turnback and the shoe must not extend more than  $\frac{1}{4}$  inch beyond the hoof at the toe. The heel of the shoe must not extend beyond the bulb of the horse's heel when a perpendicular line is drawn from the bulb of the horse's heel to the ground.

## **10.12 Racking Horse**

English tack and attire are mandatory in all classes except those that specifically require or permit otherwise. Refer to the NWHHA Rule book, Section 8 for descriptions of tack and attire. Whips are not permitted.

### **10.12.1 Divisions and Shoeing**

Refer to NWHHA Rule book, 9 for shoe requirements.

### **10.12.2 Trail Pleasure Racking**

Trail Pleasure Racking horses shall exhibit a true 4 beat gait with an effortlessness geared toward encouraging stamina and longevity on the trails.

Horses must walk and rack on a loose rein, head should be collected but with no evidence of strain on part of horse or rider and be extremely well mannered, responsive and quiet. Horses must stand quietly and back readily upon the direction of the judge.

- a. The horse will be required to perform two gaits: 1) Trail Pleasure Walk and 2) Trail Pleasure Rack. Animation and action are not desired (no more than 45 degrees) in the Trail Racking horse. In no instance will speed be considered a factor for judging.
- b. Trail Pleasure Racking may be shown English or Western. Western attire horses must reverse away from the rail (to the inside). If shown Western, may be ridden two handed but if ridden one handed, cannot be changed during performance. Five year old and under may be reined using a bosal or snaffle, but the rider must use two hands on the reins. The horse shall wear correct Western tack.
- c. The Trail Pleasure Racking shoe must not exceed a lite shod shoe ( $\frac{3}{4}$  inch x  $\frac{3}{8}$  inch is maximum).

### **10.12.3 Pleasure Racking**

Pleasure Racking horses should exhibit a true 4 beat gait with more show presence than a trail pleasure racking horse. Head should be collected but with no evidence of strain on part of horse or rider. The Pleasure racking horse will exhibit more animation than the trail racking horse but less animation than a country pleasure racking horse (greater than 45 degrees but less than 70 degrees). Horse should be extremely well mannered, responsive and quiet. The horse will be collected in the bridle at all times. Horse must stand quietly and back readily upon direction of the judge.

1. The horse will be required to perform three gaits:
  - a. Brisk Walk: Horse must exhibit a Brisk Walk, but not a Show Walk, be alert in the bridle, well collected and controlled.
  - b. Slow Rack: Horse must exhibit a slow, smooth, four beat gait, be alert and collected in the bridle.
  - c. Extended Rack: The Extended Rack shall be a comfortable easy going four beat gait in which speed is not a factor, but easily distinguished from the Slow Rack.
2. Pleasure Racking will be an English attire only class.
3. The Pleasure Racking horse may wear any size shoe not to exceed a Park Lite shoe (1 inch x  $\frac{1}{2}$  inch maximum).



#### **10.12.4 Country Pleasure Racking**

Country Pleasure Racking horses should exhibit a true 4 beat gait with more animation than the Pleasure Racking horse (greater than 70 degrees). Horse should display brilliance and show presence. Head should be collected but with no evidence of strain on part of horse or rider. Horses should be well mannered and responsive. Quality of gait shall not be sacrificed for speed. Horse will be alert and collected in the bridle at all times. Horses must stand quietly in the lineup and back readily upon direction of the judge.

1. The horse will be required to perform three gaits:
  - a. Show Walk - The Show Walk is a smooth, collected, slow and easy gait and there shall be a smooth stride behind with a natural rolling motion in the front. It is a distinctive four-beat gait displaying both style and grace. The Country Pleasure Show Walk will not have the speed or animation of the Country Pleasure Slow Rack.
  - b. Slow Rack
  - c. Fast Rack.
    - i. Horses shall enter ring at a Slow Rack.
2. Country Pleasure Racking may be shown English or Western. Western classes must reverse away from the rail (to the inside). If shown Western, may be ridden two handed but if ridden one handed, cannot be changed during performance. Five year old and under may be reined using a bosal or snaffle, but the rider must use two hands on the reins.
3. The Country Pleasure Racking horse may wear any size shoe not to exceed the plantation shoe (1 ½ inches x ½ inch).

#### **10.12.5 Style Racking**

The Style Racking Horses should display brilliance and show presence while performing a true 4 beat rack. Horses should be balanced both front and rear with animation and action in both the show walk and style rack. Exhibitors should not sacrifice style or gait for speed

1. Horses shall enter the ring at a Style Rack. The judge will call for the Show Walk and the Style Rack both directions of the arena. Style Racking horses are not required to back.
2. The Style Racking horse may wear any size shoe not to exceed the plantation shoe (1 ½ inches x ½ inch).

#### **10.12.6 Speed Racking**

Speed Racking Horses should exhibit the brilliance and excitement of Speed Racking. However, form shall not be sacrificed for speed. Any tendency to Trot, Pace, or break gait must be penalized in judging.

1. Horses shall enter the ring at a Slow Rack. The Judge will ask for Show Walk, Slow Rack, and Fast Rack both directions of the arena. Speed Racking Horses are not required to back
2. The Speed Racking horse may wear any size shoe up to the plantation shoe (Not to exceed 1 ½ inches x ½ inch).
  - a. Protective equipment, including un-weighted heel boots, quarter boots, and bell boots are permitted. The DQP will inspect the horse and all boots before allowing them on a horse. After inspection, boots and safety equipment may be put on the horse in the warm-up area.

#### **10.12.7 Open Western Pleasure Racking**

1. Horses shall enter the ring at a Pleasure Walk. The Judge will ask for a Pleasure Walk and a Slow Rack both directions of the ring. Horses in Western Pleasure must reverse away from the rail (to the inside). A halt on the rail may be called for. Horses must stand quietly on the rail and in the lineup, and back freely when asked. If a western horse does not stand quietly, it shall be penalized.

2. It is suggested that in Championship classes the judge ask the entries to back clear of the lineup and do a 360 degree neck or direct reined turn, either right or left, rider's discretion.
  - a. Execution of an ideal turn would be performed on the haunches, the horse should pivot on the inside hind leg and step across with the front legs. Turns should be smooth and continuous turning in either direction. Deep flexion of the hocks and speed of the turn is not to be valued over accuracy and smoothness of the pivot.
3. The horse shall wear correct Western tack. The horse must wear a bridle with no cavesson or colored brow band. Braids are prohibited.
4. Reins must be held in one hand and cannot be changed during performance. Five year old and under may be reined using a bosal or snaffle, but the rider must use two hands on the reins. Refer to the NWHHA Rule Book, Section 8 for a full description of Western requirements.
5. The Western Pleasure Racking Horse may wear any size shoe up to the Plantation shoe (not to exceed 1 ½ inches x ½ inch).

### **10.13 Versatility Classes**

Refer to the NWHHA Versatility Rulebook for complete rules of NWHHA regulated versatility events.

### **10.14 Halter Classes**

The composition and design of the Walking Horse should enable the horse to be a functional athlete that can perform the gaits specific to the breed. Basic conformation is a must with balance, structural correctness, adequate muscling, breed and sex characteristics being key components to provide athleticism, desired movement, and image for the breed. Added to those components is a distinct style of conformation which should include a neck that rises higher out of the shoulders than most breeds and more hip and hock angulation than most breeds. The ideal Walking Horse should possess an attractive head, well-shaped and pointed ears; large, kind, clear and alert eyes; a tapered muzzle; long and graceful neck with a refined throat latch; long, sloping shoulders; deep heart girth; chest width neither too wide nor too narrow; short to medium length back with strong coupling at the loin; sloping croup with lower-set tail; the hip is sloped and long from point of hip to hip joint, shorter from hip joint to stifle, long from stifle to hock with muscular development extending down toward the hocks. The rear cannon bones are short. The underline is longer than the topline. Extremes in any conformation component are not desirable. Soundness of limbs should be of utmost importance. In all in-hand and model classes, all horses should be free of genetic abnormalities such as parrot mouth, under-bite or any other incorrect bite deviations. Additionally, all stallions three years of age and older should have two testicles descended.

#### **10.14.1 General**

- a. Entries in this division should exemplify the ultimate in conformation. They should be in sufficient good flesh to present a healthy appearance and should be immaculately groomed. Breeding, Halter and In hand classes, all horses should be free of genetic abnormalities such as parrot mouth, under-bite or any other incorrect bite deviations. Additionally, all stallions three years of age and older must have two testicles descended.
- b. No entry may be administered a medication that will alter its disposition or deportment in the ring. When such a medication is suspected by a Judge, he shall have the authority to order a medical examination to determine if such medication has been administered. The NWHHA shall reserve the right to examine any entry to determine if drugs have been administered. Such examination as may be required shall be administered after the class. Entries showing obvious outward signs of being sedated or tranquilized shall be excused by the Judge in Halter Division classes.
- c. No ginger or any medication may be applied to the entry.

- d. Any trainer or handler who, in the opinion of the Judge, abuses an entry with a whip or other instrument shall be excused from the class.
- e. If, in the opinion of the Judge, an entry poses a threat to other exhibitors or, by its behavior, offers an obstacle to other exhibitors, it may be excused from competition.
- f. Exhibitors must wear conservative attire including, at a minimum, a collared shirt and tie.

#### **10.14.2 Equipment**

- a. Weanlings and Yearlings shall be shown in a show halter.
- b. Two Year Old and older entries may wear a show bridle or show halter.
- c. Boots or action devices and set tails of any kind are prohibited on all entries.
- d. Braids in the manes and/or forelocks are required.
- e. Whips not to exceed four feet in length including snapper are permitted for use by handlers presenting their horses with English equipment. Neither whips nor crops are allowed with Western presentation.

#### **10.14.3 Judging Emphasis**

- a. All classes in this division, shall be judged on overall performance, presentation and conformation.
- b. Extremes in any conformation component are not desirable. Soundness of limbs should be of utmost importance.
- c. Entries with any genetic abnormalities should be severely penalized.
- d. Unsoundness and/or transmittable faults or weaknesses must be penalized strongly in final judging.

##### **10.14.3.1 Breeding Classes**

Open to all exhibitors with keeping with specific class requirements. Entries will be shown in a bridle or show halter dependent on age of the offspring presented (Weanling and Yearlings must wear a show halter). Breeding Classes shall be worked at the discretion of the Judge. Horses shall be shown in hand at a walk as directed, lined up and judged. Suggested classes are:

- a. Entries in Mare and Foal Classes shall be judged 50% on the mare and 50% on the foal.
- b. In Produce of Dam, the mare is shown in hand with 2 or more offspring.
- c. In Get of Sire Classes, the stallion is shown in hand with as many as three but not more than five of his. Get of Sire Classes are judged 100% on Get.

##### **10.14.3.2 Halter Classes**

Halter Classes for Weanlings, Yearlings and Two Year Old horses, Weanlings and Yearlings are to be shown in a show halter. Two Year Old horses may wear either a bridle or show halter. Halter Classes may be divided further by sex of entries. Entries in these classes are to be shown at a walk both ways of the ring and are to be judged 50% conformation and presentation and 50% movement.

- a. Walking Horses, Weanlings, Yearlings and Two Year Olds, in their way of moving, should reflect a natural looseness with free-moving shoulders and an ample over-stride.
- b. Halter Class entries shall be shown in hand at a walk, reversed and walked, lined up and judged.

- c. When entries are exhibited they should stand erect and square on all four feet. Entries should be alert with ears forward, attentive to the surroundings. Unruly entries must be penalized.
- d. Suggested Classes:
  - 1. Weanlings
  - 2. Yearlings
  - 3. Two Year Old
  - 4. Championship Classes

#### **10.14.3.3 In-Hand Classes**

In Hand Classes for horses two years old and over are to be shown in a bridle or show halter. Classes may be divided in classes by sex of the horse. Weanlings and yearlings are to be shown in a show halter. Entries in these classes are to be shown at a walk both ways of the ring and are to be judged 50% conformation and presentation and 50% movement.

- a. In Hand Walking Horses, Weanlings and Yearlings, in their way of moving, should reflect a natural looseness with free-moving shoulders and an ample over-stride.
- b. General Procedures
  - 1. Entries in all classes in this Division shall be led into the ring and proceed at a walk, reversed, walked, line up as directed by the Judge for judging
  - 2. When entries are exhibited, they should stand erect and square on all four feet. Entries should be alert with ears forward, attentive to the surroundings. Unruly entries must be penalized.

## **11 DQP**

### **11.1 Definition**

A DQP is a Designated Qualified Person trained to detect a horse which is in violation of the HPA. (Horse Protection Act) The DQP is responsible for enforcing the HPA and NWHHA Rules. The initials DQP in these Rules applies throughout to Recognized DQPs. A Recognized DQP licensed by the NWHHA is a representative of show or sale management. Designation as a NWHHA DQP is bestowed by the NWHHA according to procedures formulated by it, to individuals, whose equine expertise and personal character merit the designation. An individual's conduct and ability as a DQP must be exemplary and is subject to continual review. In an effort to eliminate conflicts of interest, real or perceived, NWHHA will not approve individuals who are involved in training, exhibiting or shoeing horses whether or not this is their principal source of income. The immediate family of a DQP may exhibit horses at a show in which the DQP is not officiating. A currently licensed DQP may not present horses for inspection whether or not he is the official DQP at any affiliated NWHHA show.

### **11.2 Enrollment of DQPs**

Application must be made on the official form furnished by the NWHHA. No application shall be considered unless and until references are returned. The NWHHA shall act upon every application for enrollment and annual renewal of DQPs. The DQP Director will consider only those applications made on the official form. If approved, the applicant will be furnished an examination paper which must be answered and returned to the NWHHA for review. Each applicant whose examination paper receives a mark of 90% or better and who has apprenticed two or more shows may be issued a DQP card at the discretion of the DQP Director. The card is good for the calendar year only.

### **11.3 Annual DQP Refresher Course**

After the first year, all currently licensed DQPs must attend a four-hour refresher course each year conducted by the NWHHA and the USDA. It is the DQP's responsibility to attend these classes at their

own expense. Failure to attend a four-hour refresher course in a calendar year will mean the DQP's license will be automatically revoked. If a DQP misses a year he/she must complete the 14 hour course to be reinstated in the DQP Program.

#### **11.4 Regulations Governing DQPs**

- a. DQP working a particular show is ineligible to serve at that show as President, Chairman, Secretary, other show officer, manager, other show employee or exhibitor.
- b. Failure of a DQP assigned by the NWHHA without due cause to attend the show or sale or perform his duties in accordance with the Rules shall constitute cause for disciplinary action. (A DQP unable to attend a function to which he/she has been assigned must notify the NWHHA DQP Director immediately.)
- c. A DQP must be assigned by the NWHHA DQP Director before he can serve as DQP at an affiliated or Non-affiliated show or sale.
- d. A DQP is prohibited from visiting with or communicating with exhibitors while working a horse show except in the course of carrying out his/her official duties. Exhibitors are allowed in the inspection area only when presenting an entry for inspection.
- e. A DQP's immediate family is prohibited from showing at a show where that DQP is working.

#### **11.5 Cancellation of DQP Approval**

The NWHHA, having a DQP program certified by the USDA, shall issue a written warning to any DQP who violates the Rules, regulations, bylaws or standards of conduct promulgated the NWHHA pursuant to this section, or who carries out his duties and responsibilities in a less than satisfactory manner, and remove any DQP off of the NWHHA approved DQP list after a second violation. After removal of a DQP from the approved list, the DQP may, within 30 days thereafter, request a Hearing before the Independent Hearing Committee. If the committee upholds the dismissal of a DQP, the DQP may appeal the decision of such committee to the USDA Deputy Administrator within 30 days from the date of such decision, and the Deputy Administrator shall make a final determination in the matter. If the Deputy Administrator finds, after providing the DQP who has been dismissed with a notice and an opportunity for a hearing, that there is sufficient cause for the committee's determination regarding the DQP's dismissal, he shall issue a decision sustaining such determination. If he does not find that there was sufficient cause to dismiss the DQP, the NWHHA shall reinstate the DQP. The NWHHA shall dismiss any DQP in its program who has been convicted of any violation of the Act or regulations or of any DQP who has paid a fine or civil penalty in settlement of any alleged violation of the Act or regulations if such alleged violation occurred after July 13, 1976. A DQP may be suspended from his/her official duties by the NWHHA DQP Director or otherwise disciplined with or without formal notice. A DQP must complete his assignment as the official at a show prior to being dismissed.

#### **11.6 Authority**

- a. A DQP should clearly understand that he has no authority in connection with the management or the judging of a show. He/she is the representative of the NWHHA and should point out in a diplomatic manner any instance where NWHHA Rules are not enforced. He/she should not dictate to the Judges or management but should immediately report to the appropriate officials any violations of the Rules, which provide that only sound horses are shown. He/she should keep himself/herself available to Judges, exhibitors and management at all times to investigate any alleged violation of the Rules.
- b. A DQP has the authority and will disqualify from competition or sale any horse found in his /her opinion to be in violation of the HPA or NWHHA regulations.
- c. All horses become subject to the authority and jurisdiction of the DQP when they are brought upon the show grounds, except when same are under judgment inside the show ring.

- d. The method and manner of determining the eligibility of horses to show shall be within the sole discretion of the DQP.
- e. In shows using both a veterinarian and a DQP, any horse declared ineligible to show by either one shall not be allowed to show.

### **11.7 Duties**

- a. To assist Show Management.
- b. To report to the Show Committee any misrepresentation or substitution of entry without waiting for a Protest.
- c. To report to the DQP Director and Show Manager immediately, any offense or violation of the Rules and prefer charges against the violator.
- d. To report to the NWHHA DQP Director any violation of the rules that is not properly handled by Show Management in the opinion of the DQP.
- e. To report to the NWHHA DQP Director any exhibitor or trainer who has failed to comply fully with the provisions of the Rules of the NWHHA regarding the showing of only sound horses.
- f. To appear upon the request of the NWHHA at any and all Hearings involving the DQP program.
- g. To transmit to the NWHHA DQP Director by EMAIL, within 48 hours of the conclusion of the show, the following information:
  - 1. A written report of any offense or violation of the HPA or the NWHHA Rules on every show or sale inspected.
  - 2. A written report if there were no violations found on every show or sale inspected.
  - 3. A copy of the premium list and/or program on each show with any changes noted.
  - 4. A program or catalog on every sale or exhibition.
  - 5. The total number of the horses inspected at each sale or exhibition,
  - 6. both pre-show and post-show, must be accurately recorded on the post show report form provided by the USDA.

**Note:** All hard copies of DQP Post Show reports and the class sheets for each class along with the final show bill with any changes noted must be mailed to the NWHHA DQP Director within four days after completion of every show or sale on forms furnished by the NWHHA. Failure of a DQP to get his report in the office on time could result in disciplinary action up to the loss of the DQP's license.

### **11.8 Responsibilities**

- a. A DQP shall keep him/herself aware of all USDA and NWHHA Rules and regulations and have an updated copy with him/her at the shows or sales in which he/she works.
- b. A DQP shall not work a sale or show without prior notification and assignment from the NWHHA DQP Director.
- c. A DQP shall carry the required documents and tools to each show, sale or event, as specified in the DQP SOP.
- d. No individual may retain their license as a NWHHA DQP if that individual acts in the capacity of a DQP, or in the capacity of a principal, officer, director, committee member or substantially similar position, for any other HIO, unless approved by the President of NWHHA and the DQP Director in writing. Upon verifiable information to the sole satisfaction of the Director of DQP Services, a DQP so acting shall be immediately terminated, and there shall be no appeal.

### **11.9 Inspection procedures**

- a. The only persons allowed in the inspection areas are the exhibitor, trainer and one assistant, the assigned DQPs, clerical assistant to the DQP, DQP apprentices who are apprenticing at that show, NWHHA officials, USDA/APHIS personnel with legal authority as set forth by the HPA.
- b. The exhibitor/rider must be dismounted during the inspection of the horse.

- c. The DQP will inspect horses no more than three classes ahead of the time the inspected horses are to be shown, when the show has 150 horses or more.
- d. The DQP will inspect horses no more than two classes ahead of the time the inspected horses are to be shown, when the show has less than 150 horses.
- e. Inspected horses will be held in a designated area that is under observation by the DQP or APHIS representative.
- f. Horses will not be permitted to leave the designated area after they have been inspected and before showing. Horses leaving the designated area after being inspected and prior to exhibition, showing, or sale will be subject to re-inspection.
- g. The DQP will have the horses walked and turned in a figure eight, allowing the DQP to observe for signs of soreness.
- h. The DQP will instruct the custodian of the horse to hold the reins no less than 18 inches from the shank of the bit.
- i. The DQP will do a physical examination of the horse's pastern area on both front limbs and may inspect the pastern area of the hind limbs
- j. The DQP must check the horse for pressure shoeing with a small hammer and/or hoof testers.
- k. The DQP will not be required to examine a horse if it is presented in a manner that might cause the horse not to react to a DQP's examination or if it is unruly or dangerous to the DQP or to persons in the area. Such horses will be disqualified from the class without inspection.
- l. The DQP may carry out additional inspection procedures as he/she deems necessary to determine whether the horse is in compliance with the HPA and its regulations and the rules of this Association. Guidelines for using the NWHHA Go/No-Go Tool to measure horse shoes are illustrated in Figure 7.
- m. No one may touch the lower limbs of the horse (from the knee to the hoof) after it has been inspected and prior to entering the event unless under the supervision of the DQP.
- n. The DQP will perform the inspection procedures in a reasonable amount of time.
- o. When the class is over, the first place horse must return to the DQP area for post-show inspection immediately upon leaving the ring area. If an entry is found to be in violation of the HPA or NWHHA rules, the class will be retied.
- p. The DQP may request that any horse report to the inspection area for inspection, post-show or event.
- q. The DQP has the right to inspect all non-trotting breeds of horses and any records pertaining to such horses that enter the event, for the purpose of enforcing the HPA.
- r. The DQP may monitor such areas at various times during the time he/she is on the grounds officiating.
- s. The DQP will discriminate in the allocation of his/her time and will not deter from his/her primary duty of examining each horse prior to entry into the event, nor in any manner delay the event, solely for the purpose of monitoring the above areas/activities.
- t. The DQP is to arrive on the show or event grounds no less than one hour prior to the event's scheduled starting time for the purpose of monitoring the unloading, preparation, warm-up, and barn areas. The DQP should continue to monitor these areas throughout the length of the event.
- u. The DQP will be observant for the use of prohibited substances and is empowered to inspect leg wrappings and shipping boots only in the presence of show management and the owner/agent of the horse.
- v. For the purposes of examining those horses showing signs of soreness, while in the preparation area, warm-up arenas, or anywhere on the show grounds, the DQP may require the custodian of the horse to bring the horse directly to the inspection area for the purpose of examining the horse for compliance with the HPA.

- w. Both clear and black materials are allowed. Further, the DQP has the authority to require the removal of shoes if his/her inspection causes reasonable suspicion of evidence of pressure shoeing.

## **12 Disciplinary Policies and Procedures**

### **12.1 NWHHA Jurisdiction**

The NWHHA shall have final jurisdiction in all matters pertaining to restrictions levied for any violation of the Rules, or any prejudicial act, and may order suspensions and penalties including but not limited to the following. Failure of any person, firm, or corporation to comply with any penalty or punishment assessed hereunder, shall result in automatic suspension of all licenses and privileges until said order is complied with.

### **12.2 Verbal or Physical Abuse**

The NWHHA Executive Committee, in its absolute discretion, may suspend from all NWHHA activities any person who exhibits verbal or physical abuse or anyone acting in a manner deemed unsafe, or exhibiting conduct unbecoming to anyone representing NWHHA in any official capacity at, or pertaining to, any horse show, sale or official function of NWHHA, including but not limited to:

- Show Management
- Judges
- DQPs
- NWHHA Officers or Directors

Suspension for verbal or physical abuse shall be in effect from the date of notice of the suspension through adjudication of the matter.

### **12.3 NWHHA Events**

The provisions of these Rules shall apply to all Owners, Exhibitors, Agents, Trainers, Managers, Riders, Show Officials, Show Employees, Members of the Families or Employees of the above, participating either individually, or as a member of an entity, or any person at a show or sale affiliated with the NWHHA who acts in a manner in violation of the Rules of the NWHHA.

- a. Any act at a show in violation of the Rules by a member of the family or employee of a person participating in the show who is described in the previous sentence, may be deemed to have been committed by such person and subject him to penalties.
- b. Any person, firm, corporation or partnership or any other entity granted any right, privilege, authorization, or license, or accepting any benefit from the NWHHA shall be deemed to have contractually agreed to fully cooperate with all duly appointed committees, agents, and employees in enforcement of all Rules, regulations, and order of the NWHHA.
- c. Any person, firm, corporation, partnership, or other entity granted any right, privilege, authorization, or license, or accepting, receiving, or exercising same, may be required to give evidence or testimony in any investigation, hearing, trial, or other proceeding held by duly appointed representatives of the NWHHA in connection with investigation of possible violation and enforcement of these Rules.
- d. Any violations and penalties applicable by the NWHHA shall apply equally to all horse shows, sales and exhibitions affiliated with the NWHHA.

### **12.4 Event Violations**

A violation is any act committed at an affiliated event prejudicial to the best interest of the NWHHA, including but not limited to the following specific acts:

- a. Failing to settle unpaid fines.



- b. Showing or exhibiting or attempting to show or exhibit while under suspension.
- c. Showing or exhibiting or attempting to show or exhibit a horse that is under suspension.
- d. Penalization by another Horse Affiliating or Sanctioning Association that has a USDA DQP certification program, or Court of Law for violation of NWHHA Rules or HPA.
- e. Acting or permitting any other to act in a manner contrary to the Rules of the NWHHA, or in a manner deemed improper, unethical, dishonest, unsportsmanlike or intemperate, or prejudicial to the best interest of the NWHHA.
- f. Committing any act or making any remark considered offensive and/or having been made with intent to influence or cast aspersions on the judging.
- g. Failing, as an exhibitor or his representative, to sign the entry blank of a show in which he competes.
- h. Treating a horse cruelly.
- i. Failing to observe any penalty imposed by the NWHHA.
- j. Influencing or attempting to influence by any means or manner any DQP in determining the eligibility of any horse entering any class at any affiliated show or event.

## 12.5 Show Management Reported Violations

Any report filed by Show Management, or any Judge or Judges, showing that a horse was excused or dismissed from the ring for a violation as provided herein will be penalized in the same manner as violations reported by a DQP. **Exception:** Bad image in the show ring that is not a sore horse.

## 12.6 DQP Reported Violations

- a. Violations and penalties will be applicable at all shows, sales, and exhibitions where there is a licensed DQP. See accompanying Penalties Charts in 12.6.2.
- b. Any horse turned down for Scar Rule violations, Sore violations, foreign substance, HPA-illegal shoeing, illegal equipment, failure to present a horse for inspection, failure to bring a first place horse for re-inspection, would be ineligible to participate in the remainder of the event.
- c. For suspension purposes, one month equals 30 days. Penalties are applied to the exhibitor or custodian presenting the horse (unless 17 years of age or under), trainer, and owner of record. HPA violations are cumulative for the lifetime of all parties (must be served consecutively), and the penalty for the 3<sup>rd</sup> offense will apply for all subsequent offenses, regardless of the horses involved. For each violation, the horse will be suspended for the duration of the parties. Penalties for non-HPA violations will be removed at the end of each calendar year.

### 12.6.1 Legal Definition of "Sore"

*The Horse Protection Act states that the term "sore" when used to describe a horse means that:*

- *An irritating or blistering agent has been applied, internally or externally, by a person to any limb of a horse, - Any burn, cut, or laceration has been inflicted by a person on any limb of a horse,*
  - *Any tack, nail, screw, or chemical agent has been injected by a person into or used by a person on any limb of a horse, or - Any substance or device has been used by a person on any limb of a horse or a person has engaged in a practice involving a horse, and, as a result of such application, infliction, injection, use, or practice, such horse suffers, or can reasonably be expected to suffer, physical pain or distress, inflammation, or lameness when walking, trotting, or otherwise moving.*
- (The Act excludes therapeutic treatment by or under the supervision of a licensed veterinarian from the definition of soring.)*

## 12.6.2 Violations & Penalties

### 12.6.2.1 Technical Violation -- Pre-Show and Post-Show

Technical violations are NON-HPA violations and are correctable offenses. Horses may be presented for inspection to enter subsequent classes except for action devices, hoof bands, leg wraps and tungsten shoes. A ticket may be issued. If a ticket is issued, the trainer, owner of record, custodian presenting the horse and/or the exhibitor will receive penalties as follows:

TECHNICAL VIOLATIONS	1 <sup>st</sup> OFFENSE	2 <sup>nd</sup> OFFENSE	3 <sup>rd</sup> & SUBSEQUENT OFFENSES
NWHA Shoeing Regulations (includes 5 inches toe limit and acrylic applied to more than one foot. See NWHA Rule Book Section 9)	Disqualified from class	Disqualified from show	
Tungsten Shoes or any other similar excessive weight shoe will not be permitted at NWHA sanctioned shows, even if measured legal.	3 months & \$500.00 fine	6 months & \$2,000.00 fine	LIFE
Lameness or Injury (not HPA related).	Disqualified from class	Disqualified from show	
Action Devices and Hoof Bands. (Working a horse on show grounds with any action device. No hoof bands allowed on show grounds.)	Disqualified from show		
Touching the lower limbs of the horse from the knee to the hoof after inspection and prior to exhibiting in the event.	Disqualified from class	Disqualified from show	
Leg Wraps. (Plastic and paper are illegal on the show grounds. Plastic, paper or any materials made thereof, or any leg protections that are on horses' legs while they are on show grounds may be subject to immediate inspection and sampling for foreign substance. 2009/2010 Points of Emphasis.)	Disqualified from show		
Unruly or Fractious Horse	Disqualified from class	Disqualified from class	

#### 12.6.2.2 Horse Protection Act Violations -- Pre and Post SHOW

The intent of NWHHA rules and regulations are meant to mirror the HPA and HPA regulations as amended and by USDA field policy. HPA Violations are non-correctable offenses and the horse is unable to compete in the remainder of the show or event. These violations would include a ticket and suspension. Post-show HPA violations will result in forfeiture of prizes and re-tying of the class. Trainer, owner of record, custodian presenting horse, and/or exhibitor will receive penalties as follows:

HPA VIOLATION	1 <sup>st</sup> OFFENSE	2 <sup>nd</sup> OFFENSE	3 <sup>rd</sup> & SUBSEQUENT OFFENSES
<b>Pressure Shoeing.</b> (Shoeing or trimming a horse's hoof in any manner that will cause the horse to suffer, or can reasonably be expected to cause the horse to suffer pain or distress, inflammation or lameness is strictly prohibited. This includes, but is not limited to, trimming into the quick of the hoof, drilling holes in the sole of the hoof, placing foreign objects under the shoe, in holes in the hoof sole or wall, or around the coronet band, constricting the hoof in any way, and standing a horse on any objects that put pressure on the hoof in any way.)	5 Years	LIFE	N/A
<b>Swapping Horses</b>	1 year	2 year	5 years
<b>Stewarding.</b> (Presenting a horse in any manner that would cause the horse not to react to a DQP's examination. Handler must hold reins 18 inches from bit shank. Whips, cigarettes, actions, or paraphernalia used in an attempt to distract a horse are prohibited.)	1 year	2 year	LIFE
<b>Refusal to have horse inspected</b> after notification by event management, DQP or USDA	1 year	2 years	4 years
<b>Giving false information or refusal to provide information</b> to the DQP/USDA. (Horse is suspended for the duration of the suspensions of the parties.)	1 year	2 years	4 years
<b>Bad Image.</b> (Exhibition of repeated or persistent reluctance to move and/or excessive shifting of weight to the hind end, and/or apparent pain on movement. In a working horse, a horse which is unlevel, balks, hops, skips. Horse showing signs of distress to be due to soring.)	1 year	2 years	5 years

<b>Bilateral Sore.</b> (Sore as defined in USDA HPA Title 9, Chapter 1, Section 11.25 of the Code of Federal Regulations. In the field, it is a consistent and repeatable reaction to palpation sensitive, unsound, showing a pain response in both front forelimbs or hind limbs of the horse.)	1 year	2 years	5 years
<b>Unilateral Sore.</b> (Consistent and repeatable reaction to palpation sensitive, unsound, showing a pain response in one foot (fore or hind of the horse.)	2 months	6 months	1 year
<b>Open Lesions on One Foot</b> - Skin cracked open on one foot. (Open lesions indicative of soring.)	2 months	6 months	1 year
<b>Scar Rule.</b> (See USDA HPA Regulation Title 9, Chapter 1, Section 11.25 of the Code of Federal Regulations)	2 weeks	2 months	1 year
<b>Scurfing</b> – Peeling. (Particles of skin loose in horse’s hair in the pastern from blistering agents.)	2 weeks	1 month	1 year
<b>Illegal Shoeing.</b> (Illegal break-over point; illegal weight attachments; acrylic or artificial toe extensions (cannot exceed 50% of the natural hoof length); heel to-toe ratio. (Bands are not allowed, but are subject to provisions in the Act if found on show grounds.)	2 weeks	6 weeks	8 weeks
<b>Foreign Substance.</b> (Any substance other than approved lubricants found on the lower limb above the hoof of a horse. Includes odors as well as visible signs of any substance. <i>NOTE: Although approved lubricants are allowed under the Act and Regulations, they are prohibited by NWHHA.</i> )	2 weeks	4 weeks	6 weeks
<b>Equipment Violation.</b> (HPA equipment-related prohibitions are listed in Sections 11.2(b) (1) through (b) (10) and (b) (12) through (b) (17). <i>NOTE: Although some equipment is legal under the Act and Regulations, its use is prohibited by NWHHA.</i> )	4 weeks	6 weeks	8 weeks
<b>Failure to have first-place horse re-inspected</b> by the DQP/USDA after class.	2 weeks	4 weeks	6 weeks
<b>Failure to have horse inspected</b> by the DQP/USDA before class.	2 weeks	4 weeks	6 weeks
<b>Suspension Violation:</b> Any person on suspension by the USDA or any USDA Certified Horse Industry Organization, including NWHHA, presenting a Horse for inspection, showing, warming-up, grooming, transporting a horse to the event, found to be in the barn areas and or participating in any manner other than being a spectator in the stands at any event will have a ticket issued for a 6-month suspension for each occurrence.			

- a. If the horse has multiple violations at the same time, penalties applied individually for each violation must be served consecutively.
- b. In violations of the Bilateral Sore, Unilateral Sore, Scar rules, or foreign-substance violations, the transporter (person involved in shipping, moving, delivering or receiving the horse) of the horse may also be suspended if the transporter had reason to believe that the horse was to be shown, exhibited, entered for those purposes, sold, auctioned, or offered for sale.
- c. Verbal or Physical abuse of a DQP/USDA and Show management shall be subject to the discretion of NWHHA. (See Section 12.2)

- d. Any horse excused from the show ring must report to the DQP Station for re-inspection.

## **12.7 Notification**

- a. Any notice, document, instrument, or other paper required to be served on any person, unless otherwise specifically provided, shall be served upon such person by certified United States mail addressed to the last known post office address of such person. When the same has been deposited in the United States mail it shall be considered delivered and served.
- b. The NWHHA shall notify the management of every Affiliated show of persons on suspension.
- c. The NWHHA may report disciplinary action taken to another horse Association if in their opinion such course is advisable for the protection of mutual interest.

## **12.8 Show Management Jurisdiction**

Whenever any person, firm or corporation, hereinafter called and referred to as the complainant, believes that his, her or its rights have been infringed upon, or that another person, firm or corporation, hereinafter referred to as the accused, has violated the rules and regulations of the NWHHA, the following procedures shall be followed:

- Violations of rules pertaining to the following matters shall be subject to jurisdiction of Show management as hereinafter provided.
  - Action devices used by an exhibitor which are prohibited by these rules.
  - The exhibiting of any horse in a class which said horse or exhibitor is ineligible to participate or compete in.
  - The exhibiting of any horse which is shod in a manner found to be in violation of these rules.
  - It is mandatory that any complaint or protest regarding the measurement of a horse be heard by Show Management.
- a. If a complainant has reason to believe that an accused has violated any of the foregoing rules and wishes that matter investigated, he must file a written statement with Show Management stating the following:
    - The name and number of the exhibitor and horse.
    - The class in which the horse was exhibited.
    - The rule that the complainant believes was violated.
    - The manner in which the rule was violated.
    - The name and address of the complainant.
  - b. The complainant shall submit a written statement to Show Management, along with the sum of \$200.00 before the completion of the final class of the show. If the complaint concerns an infraction in the last class, the complainant shall immediately notify Show Management that he intends to file a complaint and he shall have 30 minutes thereafter to submit said written statement the day of the show.
  - c. Show Management shall then take such steps as it deems necessary to make a determination of the matter and shall render a decision as quickly as possible.
  - d. If the decision of Show Management is in the favor of the complainant, the \$200.00 shall be returned to the complainant.

Show Management shall also order the accused disqualified and to forfeit any prizes or money which the accused may have received. Any exhibitor who was placed or tied below the accused shall be advanced one place in the final order. If only one judge was used in the class, then he shall immediately tie one more exhibitor for last place.

- e. If either the complainant or the accused objects to the decision of Show Management, an appeal may be taken to the NWHHA.
- f. After making its decision, Show Management shall cause a written report to be filed with the office of the NWHHA. The report shall contain a short statement of the procedure followed by Show Management in the handling of the matter and a finding of facts, and the decision arrived at. Said report shall be filed whether or not an appeal is taken.
- g. If the decision of Show Management is appealed, the Hearing Committee shall hear the matter following the procedure as prescribed in these Rules for filing an initial Complaint at its next scheduled meeting, or at some later meeting if it determines that more time is needed. The Hearing Committee shall hear the matter on the written statement and findings of facts filed by Show Management and determine if the decision arrived at was proper, based on the facts found by Show Management. If the written findings of facts submitted by Show Management are incomplete or unclear, the Committee may continue the matter and ask Show Management to submit additional findings of facts.
- h. If an appeal is taken from Show Management's decision, then the matter shall be held in abeyance until the appeal is heard and Show Management's decision shall not be put into effect until instructed to do so by the Hearing Committee.
- i. Any exhibitor who fails to return any prize or money ordered forfeited by Show Management shall be disqualified from showing until said order is obeyed, unless an appeal is taken to the Hearing Committee.

## 12.9 Suspensions

- a. The suspension shall begin on the first day after the violation is entered on the permanent record of the NWHHA. All suspensions will be assessed so as to run during the competition year beginning January 1<sup>st</sup> through December 31<sup>st</sup>.
- b. Any suspension which has not been satisfied at the conclusion of the current show year must be completed in the succeeding year before that person is eligible to resume showing or exhibiting at affiliated events.
- c. Any person who desires his/her suspension to commence running before the (20) twenty days period allowed for requesting a Hearing shall file a written statement with the NWHHA stating that he/she accepts the charge and requests the suspension begin immediately. In this event, the applicable suspension days will begin running on the postmarked date of the letter or facsimile (FAX) transmission to the NWHHA.
- d. Horses will be suspended from showing or exhibiting on the same basis provided herein for the suspension of persons, with the exception that no monetary fine will be levied against the owner of a horse which receives such accumulation of weeks as to be suspended for the remainder of the calendar year. All suspensions against the horse will be assessed so as to run during the competition year, beginning January 1<sup>st</sup> and ending December 31<sup>st</sup>. Any suspension assessed against a horse shall continue for the prescribed period regardless of the location of said horse during the period of suspension. If said horse is sold, traded or otherwise disposed of, the weeks accumulated and/or any suspension shall remain against said horse. Upon receipt of a Transfer/Bill of Sale, the NWHHA shall notify the new owner of the penalty that's assessed against the horse. The new owner shall have the same rights regarding protesting the assessment of weeks as prescribed herein above for persons.  
**Exception:** Horses shall not be assessed weeks for responsible person having provided false information.
- e. In classes where professionals can show, the rider of the horse, if he/she is a professional, shall be responsible for the condition of the horse, and shall be considered to be the responsible person.

- f. All weeks entered against a person's or horse's record shall be removed at the end of the calendar year. This does not affect suspensions carried over into the next year.

### 12.10 Immediate Disqualifications

Penalties resulting in immediate disqualifications and/or return of premiums include but are not limited to:

- a. Misrepresentation of a horse's identity, name, height, age, eligibility for the class, registered or recorded name, owner of record, or other information on any entry blank, or substitution in the show ring of an entry other than the one named for the class in question which shall result in the exhibitor's forfeiture of any ribbon, trophy, cash prize and other award won by such misrepresented or substituted animal, and shall render the exhibitor liable for further penalty. The class will be re-tied.
- b. Voluntarily removing a horse from the ring without the permission of a Judge, for which the rider and all animals under his care and training may be disqualified from all future classes at that show by the Show Committee and caused to forfeit all prizes and entry fees for the entire show.

### 12.11 Additional Penalties

Any person, firm, or corporation found guilty of violating any rule or regulation of the NWHHA shall be subject to any or all of the following penalties as may be prescribed by the NWHHA:

- a. **Censure:** The NWHHA executive committee may vote to censure a person. If found guilty of a further violation, the defendant shall be subject to a heavier penalty than for a first offense.
- b. **Expulsion:** Expulsion from all NWHHA affiliated/sanctioned events including exhibitions.
- c. **Forfeiture:** Forfeiture of any prizes or premium won by an exhibitor while in violation of these rules and regulations.
- d. **Fine:** Fine of not less than \$10.00 nor more than \$5,000.00.
- e. **Probation:** Probation for any period of time up to one year from the date of decision or, if suspension is levied, from the date the suspension is terminated. Probation shall be a time during which the conduct of the person is scrutinized carefully by the NWHHA and should violation be filed against said person he is automatically suspended from all rights and privileges until the Hearing, without action of the Hearing Committee.
- f. Suspension or cancellation of any privileges issued or granted by the NWHHA.

### 12.12 Hearing Committee

The NWHHA Executive Committee is the responsible body within NWHHA for the administration of justice concerning NWHHA matters as promulgated through NWHHA Rules and Regulations. The Executive Committee, though ultimately responsible, shall delegate to the Hearing Committee the process of hearing and reviewing evidence of alleged wrongdoings and meting out disciplinary action relative to NWHHA Rules and Regulations and the Horse Protection Act. The Executive Committee shall retain jurisdiction over Re-hearings, including the corresponding disciplinary action.

- a. The Hearing Committee shall be appointed by the Executive Committee at the annual meeting or as soon as practicable thereafter.

The Hearing Committee shall be comprised of 15 members of which the composition shall be, as nearly as practicably possible:

- 1/3 Trainers
- 1/3 Owners
- 1/3 Exhibitors

Of the members, 5 shall be designated to sit as the Hearing Panel for a particular matter on a rotation system as established and maintained through the administrative office.

- b. The Hearing Panel shall select a chairperson to preside over the panel and shall act in this capacity until the work for which the Hearing Panel was convened is finalized and acted upon by the Board of Directors.
- c. When convened, the Hearing Panel shall be provided with copies of all documents pertinent to the matter including, but not limited to, alleged charges or violations, evidence, and the identity of the parties and witnesses.
- d. The actual Hearing shall be held at a location deemed appropriate by the president.
- e. The functions of the Hearing Panel as well as any other person participating in the functions of the Panel, including NWHHA staff, shall be conducted in an impartial manner, ethically, and with respect for the person(s) against whom the allegations have been raised.
- f. All five (5) of the Hearing Panel members must be present during the entire Hearing process, must consider all evidence, and must deliberate and decide the outcome of the matter, except and unless there is an agreement otherwise made by all parties to the proceeding, including the Hearing Panel.
- g. Any member of the Hearing Committee may disqualify himself/herself due to conflict of interest or for any reason that elicits a concern for the integrity of the Hearing process.
- h. A party may request the identity of the persons who will participate in the Hearing and who will sit on the Hearing Panel. The disclosure shall be made by the NWHHA Administrative Office as soon as practicably possible after receiving said request and reasonably in advance of the Hearing. On the submission in good faith, of a timely affidavit of personal bias or other grounds for disqualification of a participating person or Hearing Panel member, the Hearing Panel will consider and decide the matters raised as part of the record and decision in the case being heard.
- i. The Hearing Panel or any persons presiding at any Re-Hearing shall prepare a written record of the proceedings which shall include: the evidence introduced and considered; each finding of fact base on the evidence; the conclusions and decisions regarding the allegations; and a statement of penalties and/or relief granted or denied. The written record shall be the official record and decision which shall be issued within ten (10) business days of the Hearing.
- j. As to all Hearings conducted by NWHHA, the parties shall be accorded:
  - 1. Written notice of the allegations, with specificity, and the possible consequences if found to be true.
  - 2. Reasonable time between notice of allegations and a Hearing date in order to prepare a defense.
  - 3. A Hearing before a panel of impartial fact finders where the proponent of the Allegation(s) must substantiate the allegation(s) by a preponderance of the evidence.
  - 4. The right to be assisted in presenting one's case by either lay assistance or legal counsel.
  - 5. The right to call witnesses, present evidence and present argument.
  - 6. The right to confront and cross-examine adverse witnesses.
  - 7. The right to have a record made of the Hearing, at the party's expense, if desired.
  - 8. The right to a timely written decision, with reasons, based solely on the evidence of record.
  - 9. Right to Re-Hearing upon new evidence with written request within 15 days of the date of the Hearing Panel's official decision.
- k. The decision of the Hearing Panel shall be final with the exception of a Re-Hearing upon the discovery of new facts per the Rules and Regulations of NWHHA.  
N. Prior to a Hearing, the Complaint may be withdrawn but must be in writing and submitted to the NWHHA Administrative Office.



### 12.13 Hearing Committee Jurisdiction

When a Complaint is made as described in these Rules, or when sufficient information is received by the NWHHA, or any official thereof, that any person is violating any rule, order or regulation of the NWHHA that involves the safety, welfare, or health of a person, member or horse and the NWHHA or official deems such charge or information warrants immediate action, then he/she may suspend all licensing and privileges of such accused person pending a Hearing of the matter.

- a. If the decision of the Hearing Committee is against the Accused, the Committee may order the Accused to pay all or a portion of the cost of the Hearing in addition to other punishment or penalties hereinafter set forth.
- b. Nothing in this section shall be construed to be in conflict with violations and penalties reported by the DQP which shall remain within the jurisdiction of the DQP, the Hearing Committee, and the NWHHA.
- c. If any Complaint or protest is filed concerning a violation which may also be the subject of a report being filed by the DQP, then said Complaint shall be adjudicated concurrently with the violation which was reported by a DQP.
- d. Nothing herein shall be construed to prevent the NWHHA or its duly authorized representative from filing a Complaint or bringing charges against any person or business entity when sufficient information is received to indicate that a violation of these rules might have occurred.
- e. If a Complaint concerns a violation of a rule which was within the jurisdiction of Show Management and no Complaint was filed with Show Management, then said violations can be properly filed as a Complaint under the jurisdiction of the NWHHA.
- f. Whenever any person or business entity, hereinafter Complainant, believes his, her or its rights have been infringed or that another person or business entity, hereinafter Accused, has violated the Rules and Regulations of NWHHA, the following shall be followed:
  1. Violation of Rules and Regulations of NWHHA, not specifically delegated to Show Management, shall be subject to the jurisdiction of the Executive Committee and delegated to the Hearing Committee through the NWHHA's Administrative Office.
  2. Complainant must initiate action by filing a Complaint through the Administrative Office which provides:
    - Name and address of the person or entity making the Complaint (if business entity a natural person must also be identified).
    - Name (and address if known) of the person or entity against whom the Complaint is filed.
    - Rule(s) believed to be violated; and
    - Complete statement of the acts which constitute the violation.
- g. The nonrefundable fee to file a Complaint is \$200.00 and must accompany the Complaint.
- h. The Complaint will be presented to the Executive Committee to determine if the charge is sufficient to warrant further action. If it is determined the Complaint is not sufficient to warrant a Hearing, the Complainant will be notified in writing of the decision. If it is determined the charge is sufficient to warrant further action, NWHHA, through the Administrative Office, shall notify the Accused that said Complaint has been filed.
- i. Notice shall be given per Notice Rules of NWHHA identified in these Rules. "Notice: Anyone formally accused, as identified by the NWHHA Rules, of any wrongdoing shall be given notice of the formal accusation by certified mail within 20 calendar days of the date the formal accusation is received by the NWHHA Administrative Office. All parties to a Hearing shall be given, by certified mail, not less than 20 calendar days' notice of the time and place for the Hearing. Notice for all matters is deemed received when sent by certified U.S. Mail or by private traceable expedited carrier and is deemed received when delivered according to this Notice rule."

- j. All parties shall be notified in accordance with these Rules of the time and place of the Hearing.
- k. If a hearing is requested for a USDA/HPA violation, or other DQP matter, a sum of \$2,500.00 is required to begin the hearing process. This sum is payable to NWHHA by preapproved personal check or by bond and must be received prior to any action being taken by NWHHA to begin the hearing process. In addition, a letter of intent indicating that the Respondent realizes that they are fully responsible for the entire costs of the hearing should they lose, must be signed and on file in the NWHHA Office prior to the beginning of the hearing process. Respondents, which may include Exhibitors (if other than the Owner or Trainer or are 17 years of age or younger), Trainers and Owners, are responsible to file hearing requests separately and must pay the \$2,500.00 filing fee separately.
- l. If the DQP violation is adjudicated in favor of NWHHA and against the Respondent then the Respondent shall bear the actual cost of the Hearing. The initial filing fee of \$2,500.00 deposited with NWHHA shall be applied toward the Hearing costs. If the Violation is unfounded, that is, adjudicated in favor of the Respondent, the entire sum deposited upon filing shall be immediately refunded to the Respondent.

#### **12.14 Hearing Committee Procedures**

- a. The Hearing Committee, through the Executive Committee, shall conduct all Hearings relative to Complaints of alleged violations of the Rules and Regulations of NWHHA. The Hearing Committee shall have such other duties and responsibilities as may be set forth in these Rules and Regulations as prescribed by the NWHHA.
- b. Any person or business entity against whom a Complaint is filed shall be entitled to a Hearing. Such Hearings shall be held only after written notice as prescribed in these Rules is given to the Accused.
- c. All Hearings may be recessed from time to time, and place to place, as the convenience of all parties and the interest of justice may demand, but the Hearing Committee of the NWHHA shall not cause unnecessary delay.
- d. The Order of the Hearing shall be:
  - Introduction of the matter
  - Introduction of all persons in attendance
  - Introduction of the parties
  - Statement of charges by the Hearing Chairperson
  - Opening statements by the Complainant
  - Opening statements by the Accused
  - Complainant's case presentation with cross-examination by Accused
  - Accused's case presentation with cross examination by Complainant
  - closing statement by Accused
  - Closing statement by Complainant
- e. The Complainant bears the Burden of Proof.
- f. Proceedings before the Hearing Committee shall be informal. No formal rules of evidence or procedure are required.  
The Hearing Panel has the sole discretion in terms of evidentiary matters, objections, and length of time permitted for opening and closing statements, and witness questioning.
- g. As an NWHHA member, the owner or lessee of a horse, participant at all NWHHA affiliated or approved events, or person appearing before the Executive Committee or Hearing Committee agrees that all witnesses and participants in such a Hearing or adjudication of any type shall be immune from any civil liability whatsoever, including but not limited to, libel, slander, defamation, invasion of privacy, product disparagement or tortuous interference with business

for information or testimony given in the course of the investigation, preparation for the Hearing, or at the Hearing.

- h. Upon completion of the Hearing, a final decision shall be rendered in writing as provided for in these Rules.

#### **12.14.1 Re-Hearing**

- a. Either party may file a request for Re-Hearing with the NWHHA within fifteen days of the date of the Hearing Committee's decision. This request must be based upon evidence which was not known at the time of the Hearing and must be supported by a sworn affidavit setting out the nature of the newly discovered evidence and the reason(s) that it was not presented at the Hearing, as well as a sworn statement that the party did not know of its existence at the Hearing. The NWHHA has sole authority to grant or deny a Re-Hearing. The decision shall be based on: (1) whether NWHHA believes the evidence is newly discovered; and (2) whether the evidence, if presented, would likely affect the decision. If Re-Hearing is granted, the Hearing Committee shall conduct the Rehearing on the record of the initial Hearing plus the new evidence and any opposing evidence to the new evidence.
- b. The penalty imposed on the initial Hearing is suspended when Re-Hearing is granted. The Hearing Committee, after Re-Hearing, may impose more, but not less penalty, if it sustains the initial Hearing decision.

#### **12.15 Adjudication without Hearing, Plea Agreement**

- a. The Hearing Panel, upon receiving a Complaint, may investigate the matter, and if the action appears warranted, attempt to settle the matter in lieu of proceeding to a Hearing. Plea agreements will not be negotiated or accepted for HPA tickets
- b. After investigating the situation, including all evidence proffered by Complainant and Accused, the Hearing Panel, in its sole discretion, may make a determination to offer a Plea Agreement or dismiss the Complaint.
- c. In the event the Hearing Panel determines to offer a Plea Agreement, the Hearing Panel shall be authorized to offer any or all of the penalties allowed under these Rules as if a Hearing had taken place. The Plea Agreement shall set forth the terms and conditions for compliance. A written disposition of the matter shall be filed by the Hearing Panel in accordance with these Rules as if a Hearing had taken place.
- d. A Plea Agreement accepted by the Accused in lieu of a Hearing is not subject to negotiation or Re-Hearing. A Plea Agreement shall have the same force and effect as would a finding of violation by the Hearing Panel following a Hearing.
- e. In no way does the offer and subsequent refusal of a Plea Agreement in lieu of a Hearing disenfranchise the Accused of his/her right to a Hearing as prescribed by these Rules. However, once a Plea Agreement has been agreed to by the Accused, the right to a Hearing shall be deemed to be permanently waived. Once the offered Plea Agreement is accepted by the Accused, it shall be effective immediately, final, and not subject to further review under any circumstances.

#### **12.16 Hearing Procedure for Violations Reported by the DQP**

- a. When a report is filed by the DQP showing a violation that accumulates weeks, the NWHHA DQP Director shall immediately notify the person against whom said violation is reported. The person shall have twenty days after the date of the letter of notification was mailed to ask for a Hearing on the matter. If the NWHHA should determine that any Protest filed by the Owner, Exhibitor or other responsible person should be frivolous and filed for the purpose of keeping

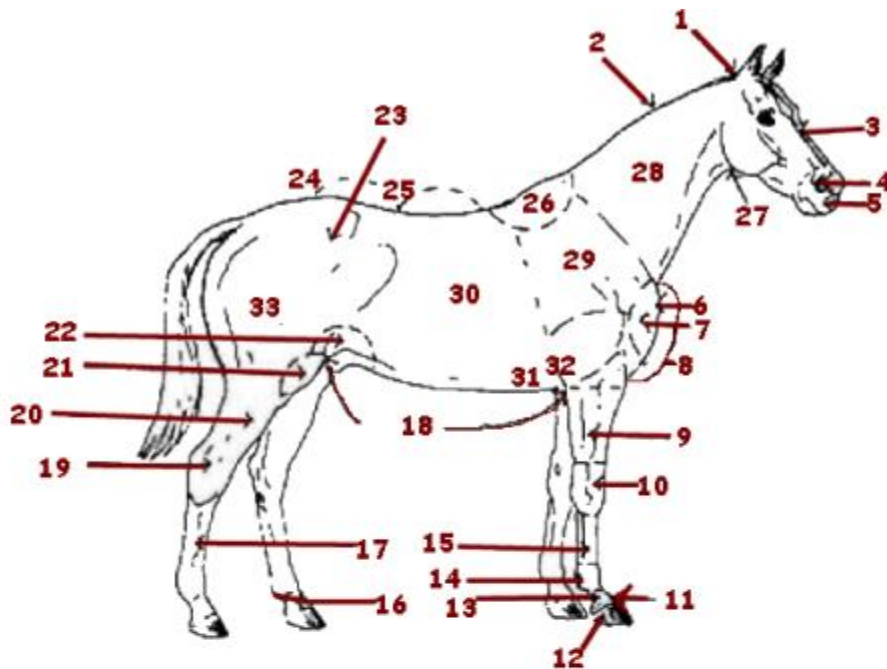
said person eligible to show at a particular show, the organization will levy such additional penalties against the person for filing said Protest as it shall deem appropriate.

- b. If no request is received by NWHHA within twenty days from date the notice was mailed, it shall enter the violation on the permanent record of the respondent.
- c. If the DQP violation is adjudicated in favor of NWHHA and against the Respondent, then the Respondent shall bear the actual cost of the Hearing. The initial filing fee of \$2,500.00 (by pre-approved personal check or bond) deposited with NWHHA shall be applied toward the Hearing costs. If the Violation is unfounded, that is, adjudicated in favor of the Respondent, the entire sum deposited upon filing shall be immediately refunded to the Respondent.

#### **12.17 Decisions Not Subject To Protest**

- a. The soundness of a horse, or horse deemed representative of bad image per NWHHA Rules, when determined by an official veterinarian or DQP of the show or by a Judge, is not subject to Protest.
- b. A Judge's decision, representing his individual preference, is not subject to Protest unless it is alleged to be in violation of the Rules.
- c. A Protest with respect to the height of a horse or the length of a horse's foot may be made only to the Show Committee. Re-measurement shall take place immediately, to the end that there shall be no change in height by re-shoeing. The decision of Show Officials shall not be overturned by the NWHHA.
- d. Plea Agreements agreed upon and signed by the Hearing Panel and Accused are final and not subject to Protest.

### 13 PARTS OF THE HORSE

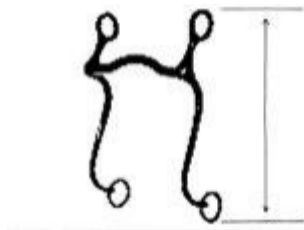


- |                      |                  |
|----------------------|------------------|
| 1) Poll              | 18) Underline    |
| 2) Crest             | 19) Hock         |
| 3) Forehead          | 20) Gaskin       |
| 4) Nostrils          | 21) Stifle       |
| 5) Muzzle            | 22) Flank        |
| 6) Point of Shoulder | 23) Loin         |
| 7) Breast            | 24) Croup        |
| 8) Chest             | 25) Back         |
| 9) Forearm           | 26) Withers      |
| 10) Knee             | 27) Throat Latch |
| 11) Coronet          | 28) Neck         |
| 12) Hoof             | 29) Shoulder     |
| 13) Pastern          | 30) Barrel       |
| 14) Sesamoid         | 31) Girth        |
| 15) Flexor Tendons   | 32) Elbow        |
| 16) Fetlock          | 33) Hindquarters |
| 17) Cannon           |                  |

## 14 ILLUSTRATIONS

These illustrations are “samples” and not necessarily the only legal bits. Be sure to check the text of the rule book to ensure your bit is legal for the class for which you are participating.

### Illustration #1 Measurement of Shank



### Illustration #2 Bit Types

#### Snaffle Bits



#### Kimberwick Bits



#### Pelham Bits



### Illustration #3 Driving Bits

Half Cheek Snaffle



Elbow



Butterfly



Liverpool



#### Illustration #4 English Curb Chains and Straps

Curb chain with curb hooks



Curb strap with curb hook rings



Curb strap with adjustable curb hook rings



All leather single-buckle curb strap



All leather double-buckle curb strap





## Illustration #5 Western Curb Chains and Straps

Worked leather



Worked silver



Tasseled



Combination curb chain with plain buckle leather ends



Combination curb chain with worked silver leather ends

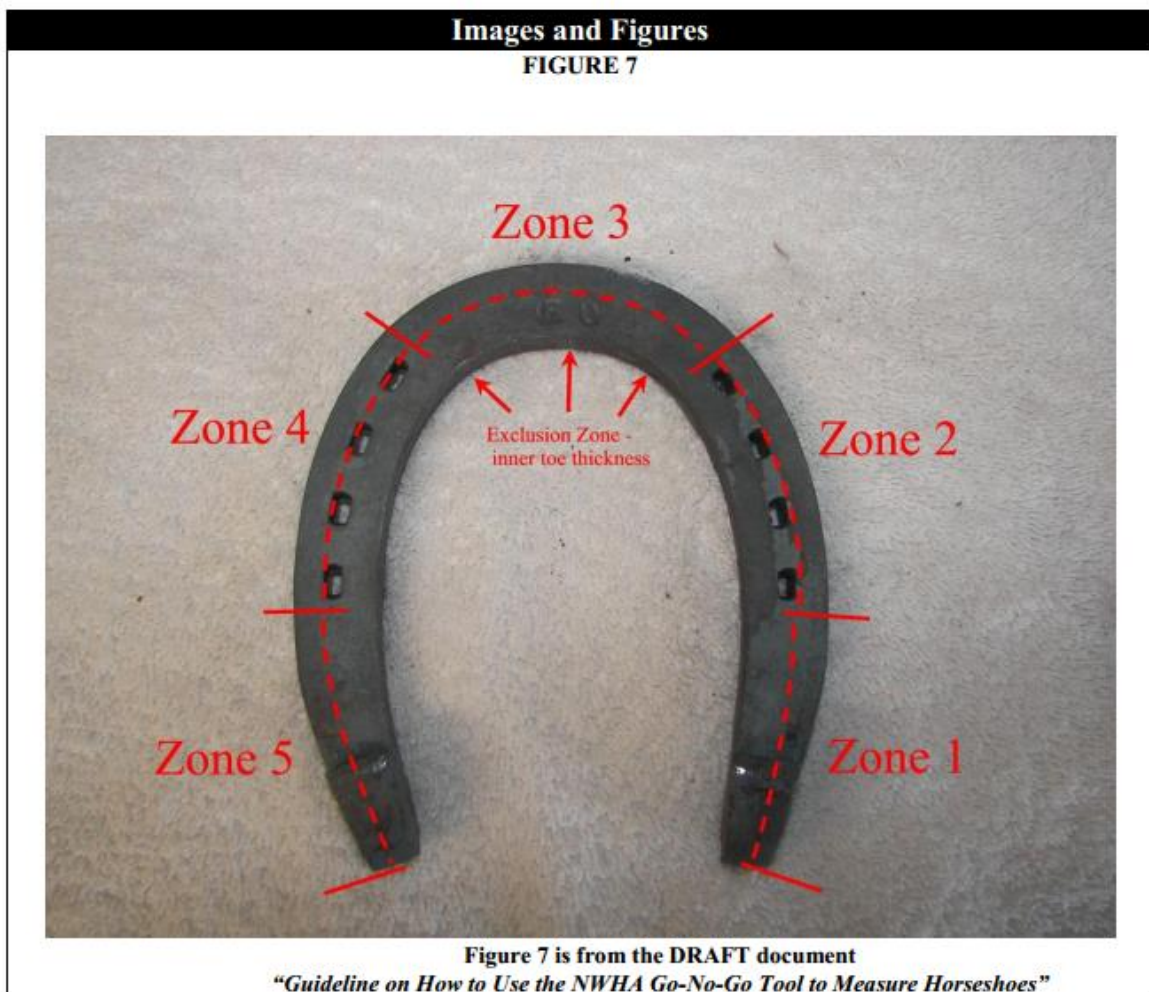


## 15 SHOE MEASUREMENT GUIDELINES

### 15.1 Figure 7 – Go/No-Go Tool

#### How to Use the Go/No-Go Tool to Measure Horse Shoes

The NWA DQP will measure shoes using the Go/No-Go Tool at three (3) random zones for width and thickness within the 5 zones (shown below in Figure 7). Exclusion zone shall be inner thickness of Zone 3 (toe area). The DQP may measure additional areas as deemed necessary to achieve confidence in compliance.



- a. No shoe can be made of any material heavier than conventional steel.
- b. Acrylic can be used to build a toe that has been broken on one foot only.
- c. Toe length must exceed the height of the heel by one inch or more.
- d. Toe length shall not exceed 5 inches.
- e. Hoof bands are prohibited on horses on the show grounds.

DIVISION or CLASS	WIDTH	THICK	CLIPS	CAULK	BORIUM	TURNBACK	MAXIMUM WEIGHT
Plantation Pleasure SSH Open Shod Country Pleasure Racking Style Racking Speed Racking Open Western Pleasure Racking	1.5 (1 ½ ) inches	0.5 (1/2) inch	Drawn from shoe itself	Must not extend beyond heel bulb	Permitted on caulks Shoe+caulk+borium Cannot exceed 1.125 (1 1/8) inches	1 inch or less shoe cannot extend beyond 0.25 (1/4) inch at toe	3.5 Lbs. (3 Lbs. 8 oz.) Per shoe
Park Lite Shod Pleasure Racking SSH Lite Shod	1.0 (1) inch	0.5 (1/2) Inch	Drawn from shoe itself	Must not extend beyond heel bulb	Permitted on caulks Shoe+caulk+borium Cannot exceed 1.125 (1 1/8) inches	1 inch or less shoe cannot extend beyond 0.25 (1/4) inch at toe	
Lite Shod, Trail Pleasure. SSH Trail Pleasure Trail Pleasure Racking All Day Pleasure	0.75 (3/4) inch	.0375 (3/8) Inch	Drawn from shoe itself	Must not extend beyond heel bulb	Permitted on caulks Shoe+caulk+borium Cannot exceed 0.875 (7/8) inches	1 inch or less shoe cannot extend beyond 0.25 (1/4) inch at toe	1.5 Lbs. (1 Lb. 8 oz.) Per shoe
Country Pleasure Keg Shod	Stamped Keg Shoe, Non toe weighted (Non draft breed type)		Poured or cast clips (not welded on)	Poured or cast clips (not welded on)	1/8" wide dot on each heel is permitted.		
Yearlings	0.75 (3/4) inch	0.375 (3/8) inch					
Weanlings	No shoes allowed						