

We proudly introduce you to the ULTIMATE HOCKEY BLADE HOLDER. Our holder equips 6 different blades models on the market today. Simply install your current blades into our holder; and you are off to the races.

Why choose Us:

Our holder utilizes bolted screws for blade attachment, which provides the most robust and reliable attachment mechanism. As such, your blades will never fall out; unlike how you commonly see blades falling out of current holders on the market.

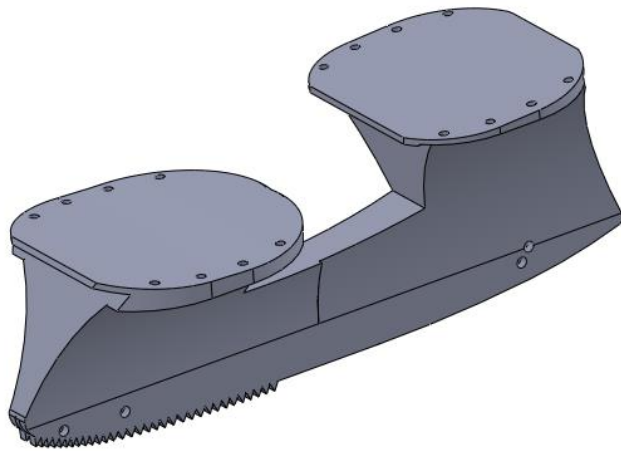
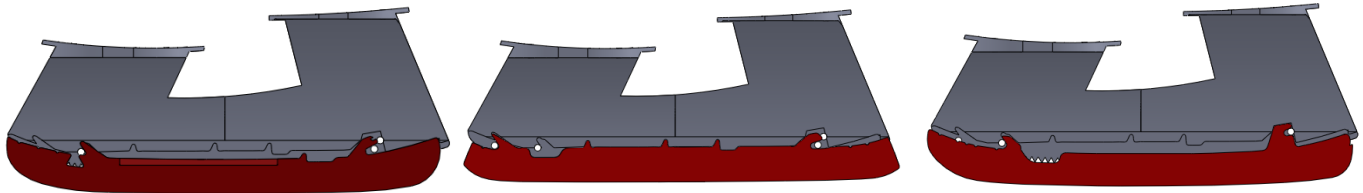
Also, our holder is equipped with innovative teeth grippers along the bottom. These teeth will grip the ice should the blade ever fall out; thus allowing a player to safely and quickly get back to the bench for substitution. All other holders on the market have smooth bottoms, and players have no grip when blades fall out; leaving them prone to injury and leaving their team down 1 player.

While the bolted attachment mechanisms will always prevent the full blade from ever falling out, the added teeth grippers can be relied on if your blade breaks from a hard shot and a section falls out - you will still have grip everywhere with this feature.

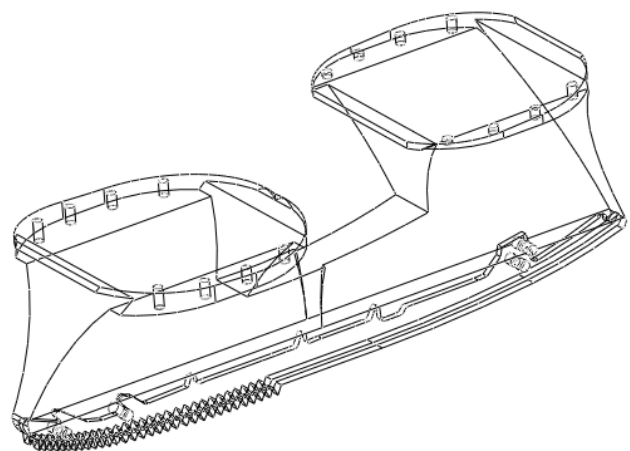
Furthermore, the teeth on this holder are perfect for dry-land training when blades are removed. You can wear your skates and practice dry-land techniques in your familiar skate setup for optimal training.

Lastly, our holders are made with stronger materials and will soon be available in colors to match your team jersey.

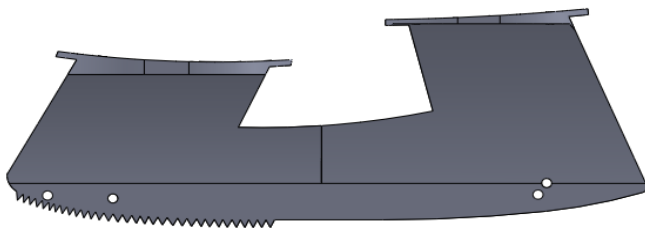
Pricing is \$149.99 CAD for a pair. For ordering and questions, please contact us: [ultimatehockeybladeholder@gmail.com](mailto:ultimatehockeybladeholder@gmail.com)



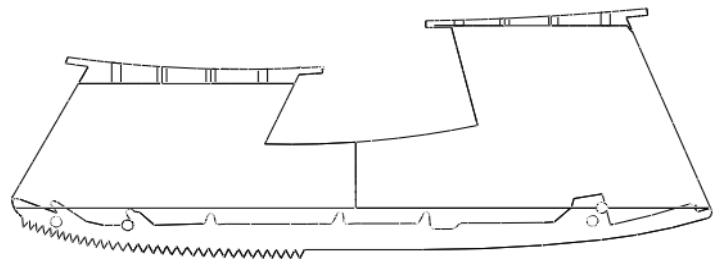
Isometric View – Solid



Isometric View – Wireframe



Side View – Solid



Side View – Wireframe

Future works:

We are working on accomodating as many blade models as possible with our holder.

We are also designing a full skate solution for you interested customers!